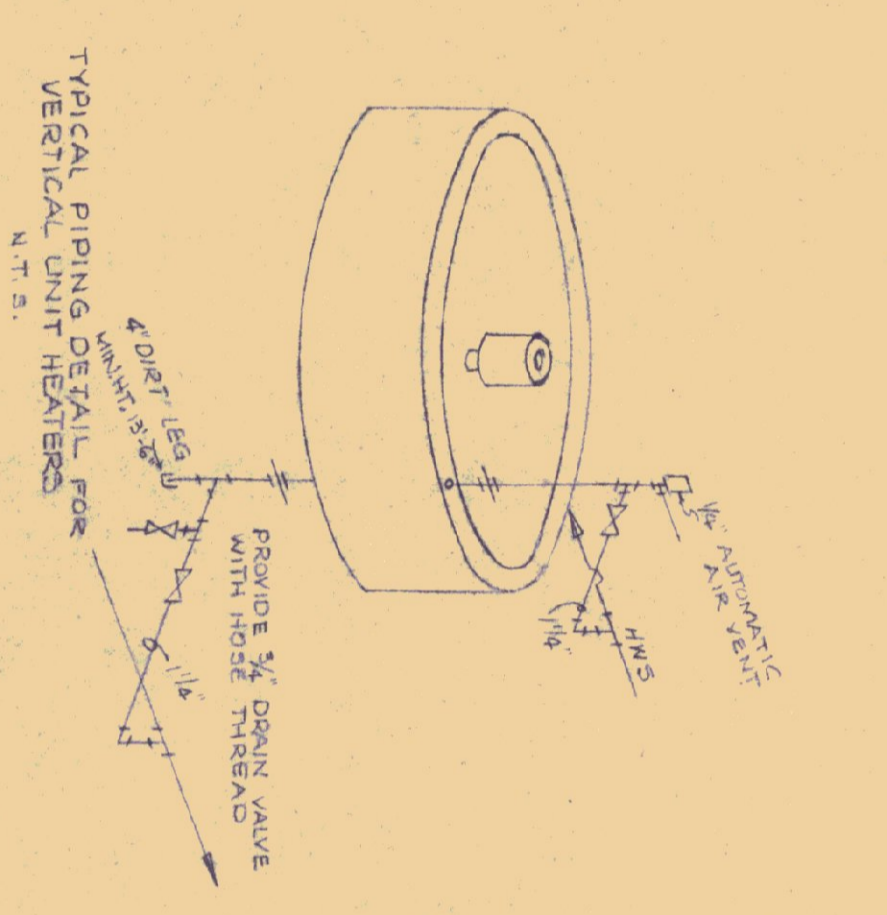
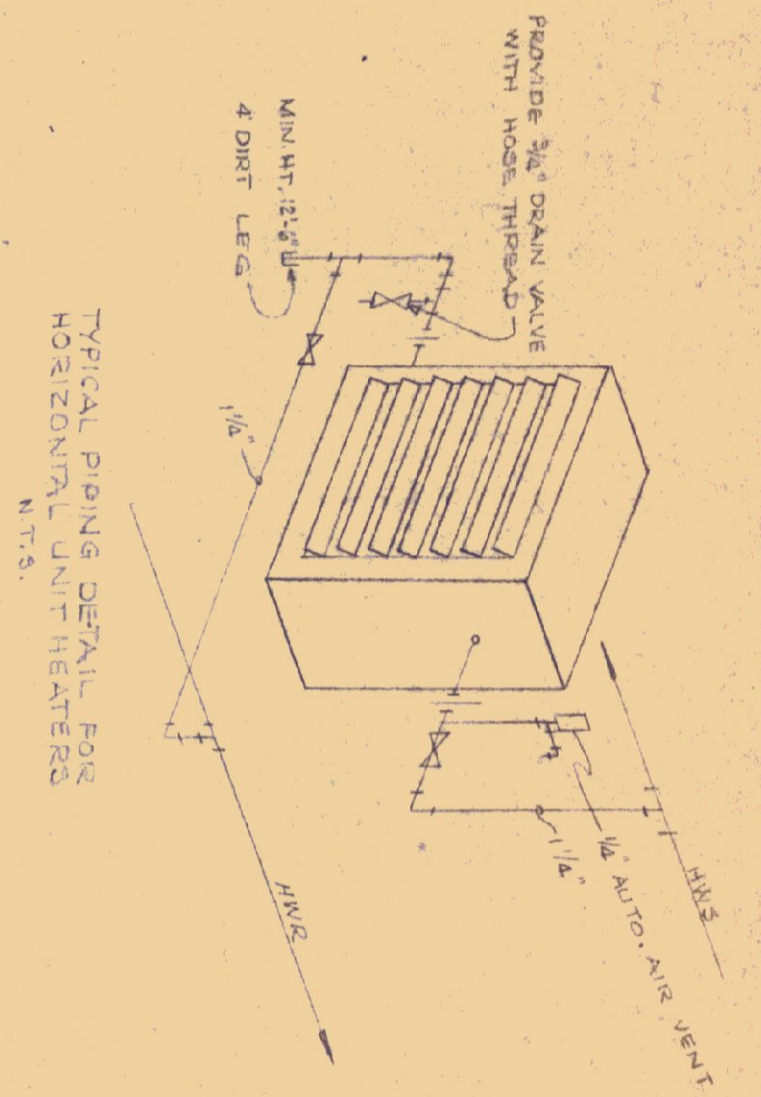
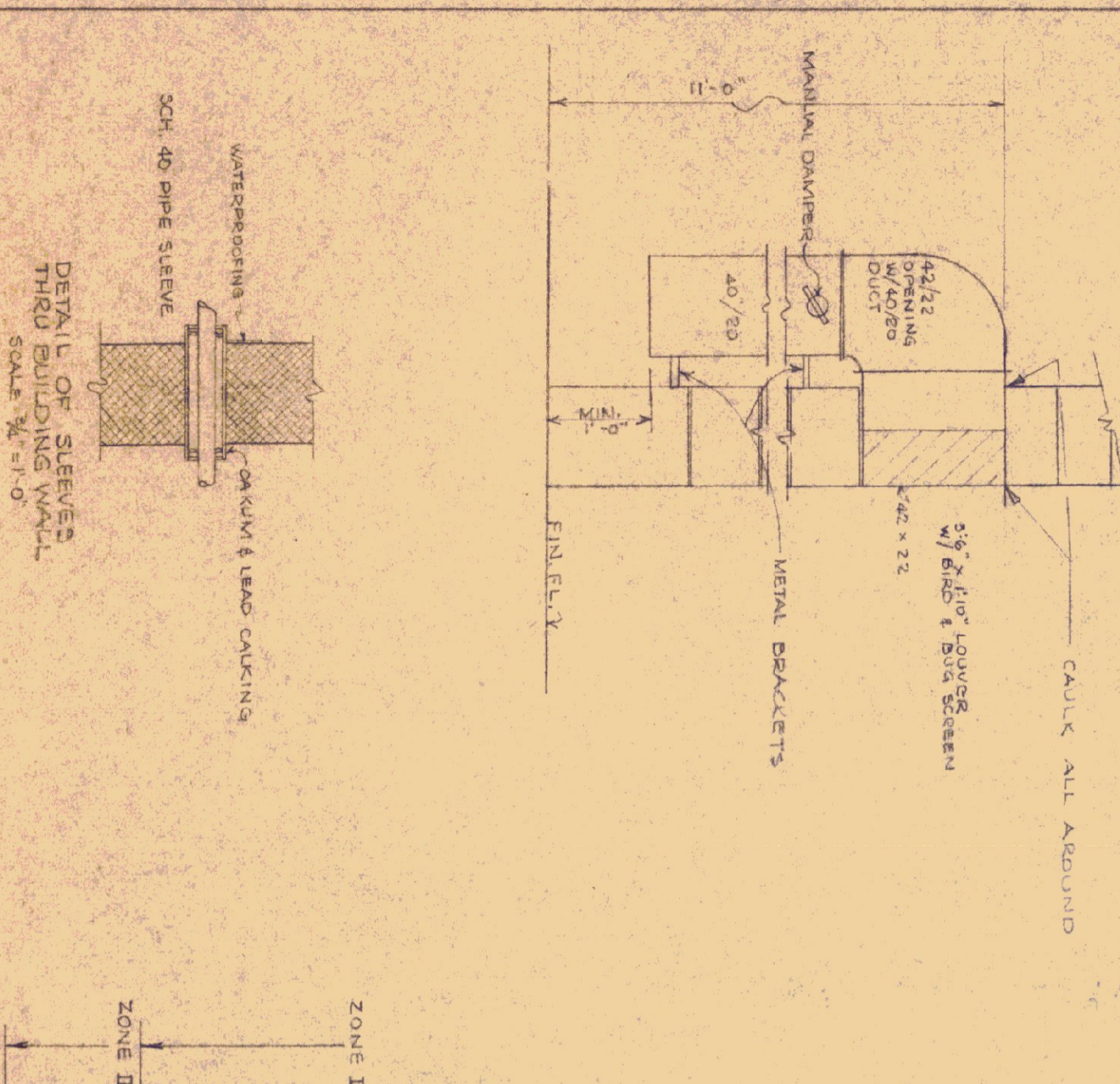
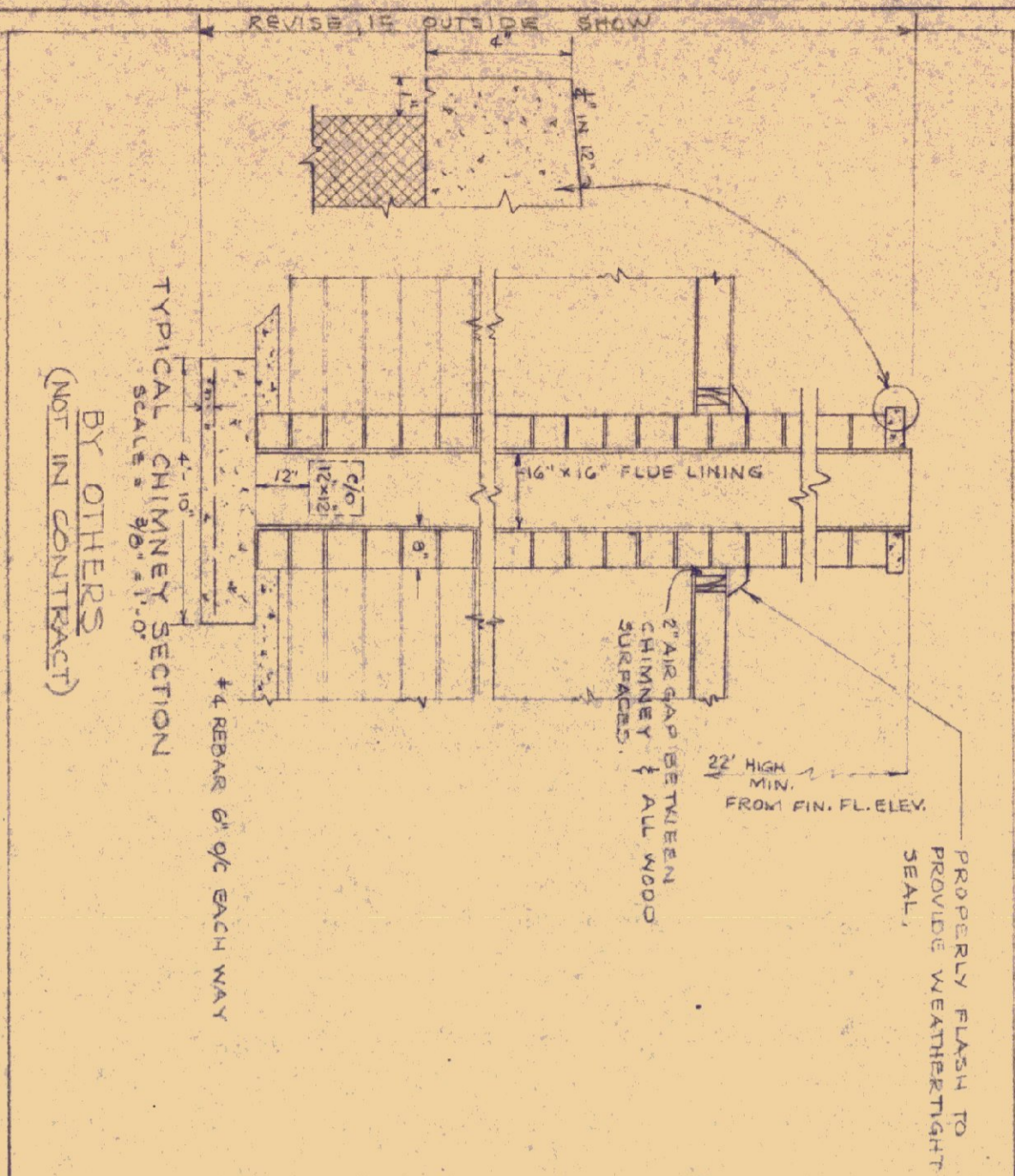
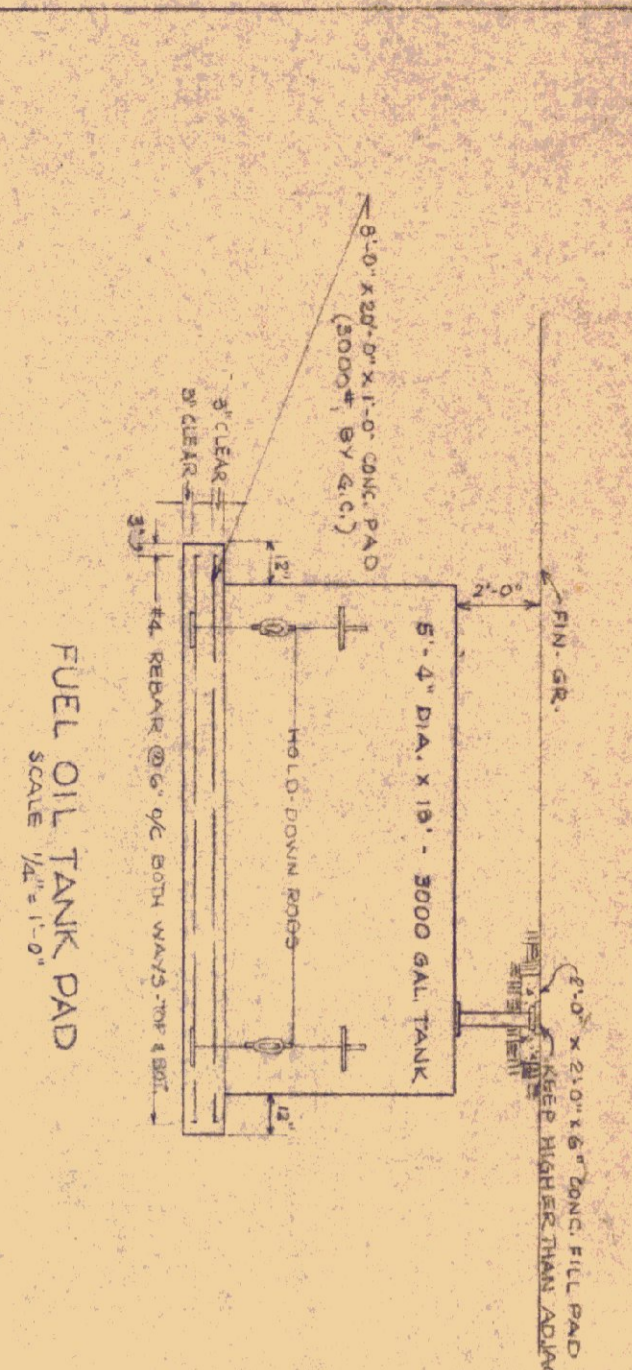
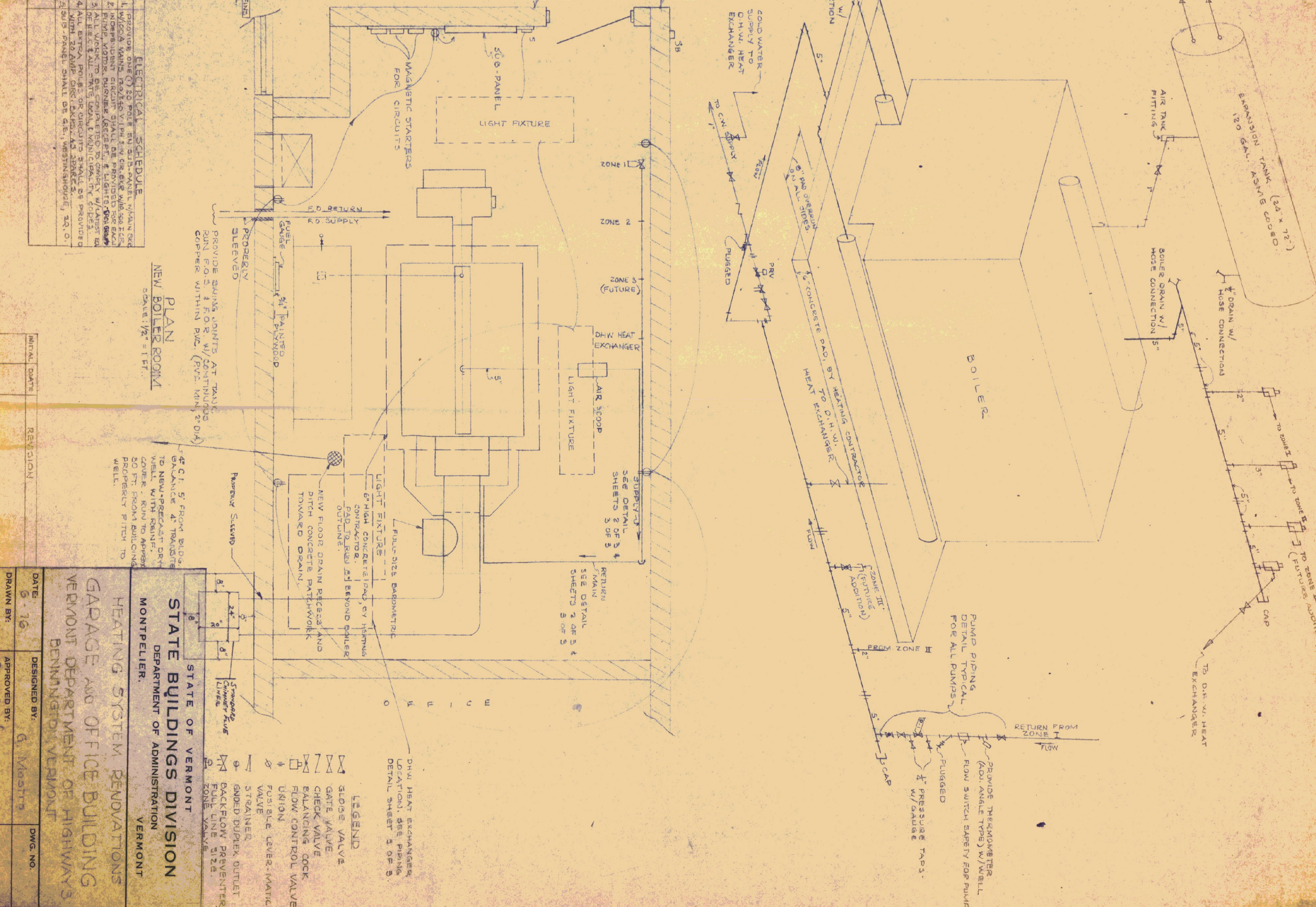


NOTE 1
 FUEL TANK EXCAVATION, BACKFILL, CONCRETE PAD, AND FURNISHING OIL TANK & SETTING (6" MIN) ON PAD BY STATE HIGHWAY DEPT. ALL OTHERS WORK NECESSARY FOR COMPLETE INSTALLATION BY MECHANICAL CONTRACTOR.



NOTE:
 DUCT FROM ALTERNATE #1 INSTALLATION OF ONE (1) 1200 MBTU BOILER SHALL BE SUCH THAT REAR OF BOILER SHALL FACE EXTERIOR WALL WITH RECHANGING ARRANGED TO RECEIVE A FUTURE SECOND BOILER OF SAME SIZE.

HEATING EQUIPMENT SCHEDULE (STATES 2, 100' E. DUCT W/20' E. DIFFERENTIAL)									
MARK	TYPE	MANUFACTURER	MODEL	WATER	HP	DISCHARGE	RPM	CFM	REMARKS
P-1	IN-LINE	BELL & HOWELL	60-1/2 A 30 GPM	1/2	1 1/2	1750	50	115/250/175	FLUE W/20' E. DIFFERENTIAL
R-1	STANDING COLUMN	STERLING	5-25	3000	1/2	1750	9 LF	2000	2\"/>
R-2	"	"	"	"	"	"	5 LF	"	"
R-3	"	"	"	"	"	"	5 LF	"	"
R-4	"	"	"	"	"	"	9 LF	"	"
R-5	"	"	"	"	"	"	9 LF	"	"
R-6	"	"	"	"	"	"	14 LF	"	"
R-7	"	"	"	"	"	"	8 LF	"	"
U-1	UNIT HEATER	MOORE	H-540	94.6	1/2	1750	1500	1500	WITH 1\"/>
U-2	"	"	"	"	"	"	1050	1050	"
U-3	"	"	"	"	"	"	1750	1750	"
U-4	"	"	"	"	"	"	2350	2350	"
U-5	"	"	"	"	"	"	1940	1940	"
U-6	"	"	"	"	"	"	1550	1550	"
U-7	"	"	"	"	"	"	1075	1075	"
U-8	"	"	"	"	"	"	2390	2390	"
U-9	"	"	"	"	"	"	1750	1750	"



ELECTRICAL SCHEDULE
 1. PROVIDE ONE (1) 20 AMP 120V 1\"/>

PLAN BOILER ROOM
 SCALE 1/8\"/>

STATE OF VERMONT
STATE BUILDINGS DIVISION
 DEPARTMENT OF ADMINISTRATION
 MONTPELIER, VERMONT

HEATING SYSTEM RENOVATIONS
GARAGE AND OFFICE BUILDING
 VERMONT DEPARTMENT OF HIGHWAYS
 BENNINGTON, VERMONT

DATE: 9-16-68
 DESIGNED BY: G. MORTON
 DRAWN BY: E. M. WARD
 DWG. NO.: 2 OF 3