

PLAN SCALE: 8"=1'-0"

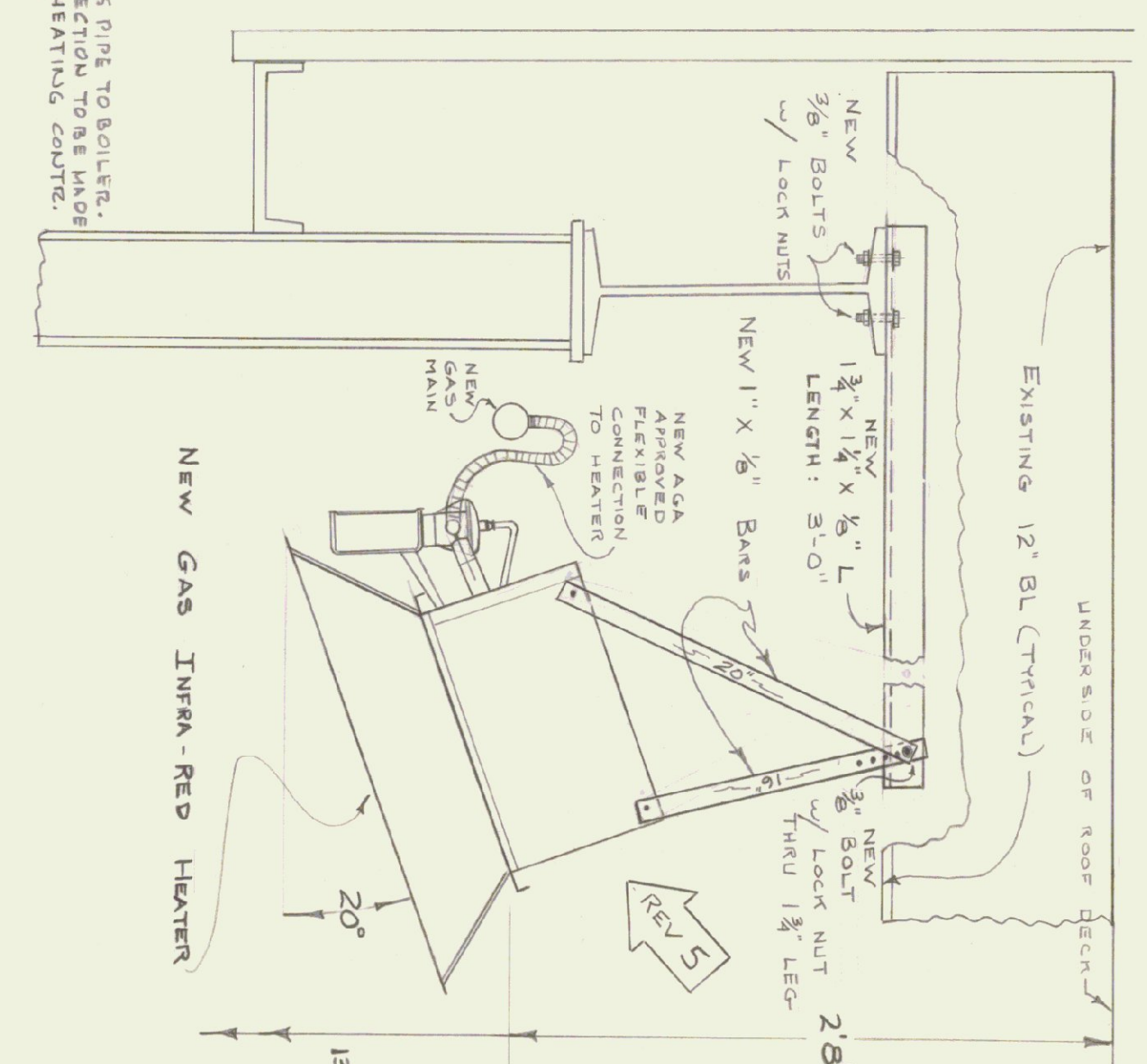
INDICATES APPROVED FLEXIBLE CONNECTION

INDICATES AN INFRARED, GAS FIRED HEATING UNIT HUNG @ 20° TO 30° FROM HORIZ. (see specifications for details)

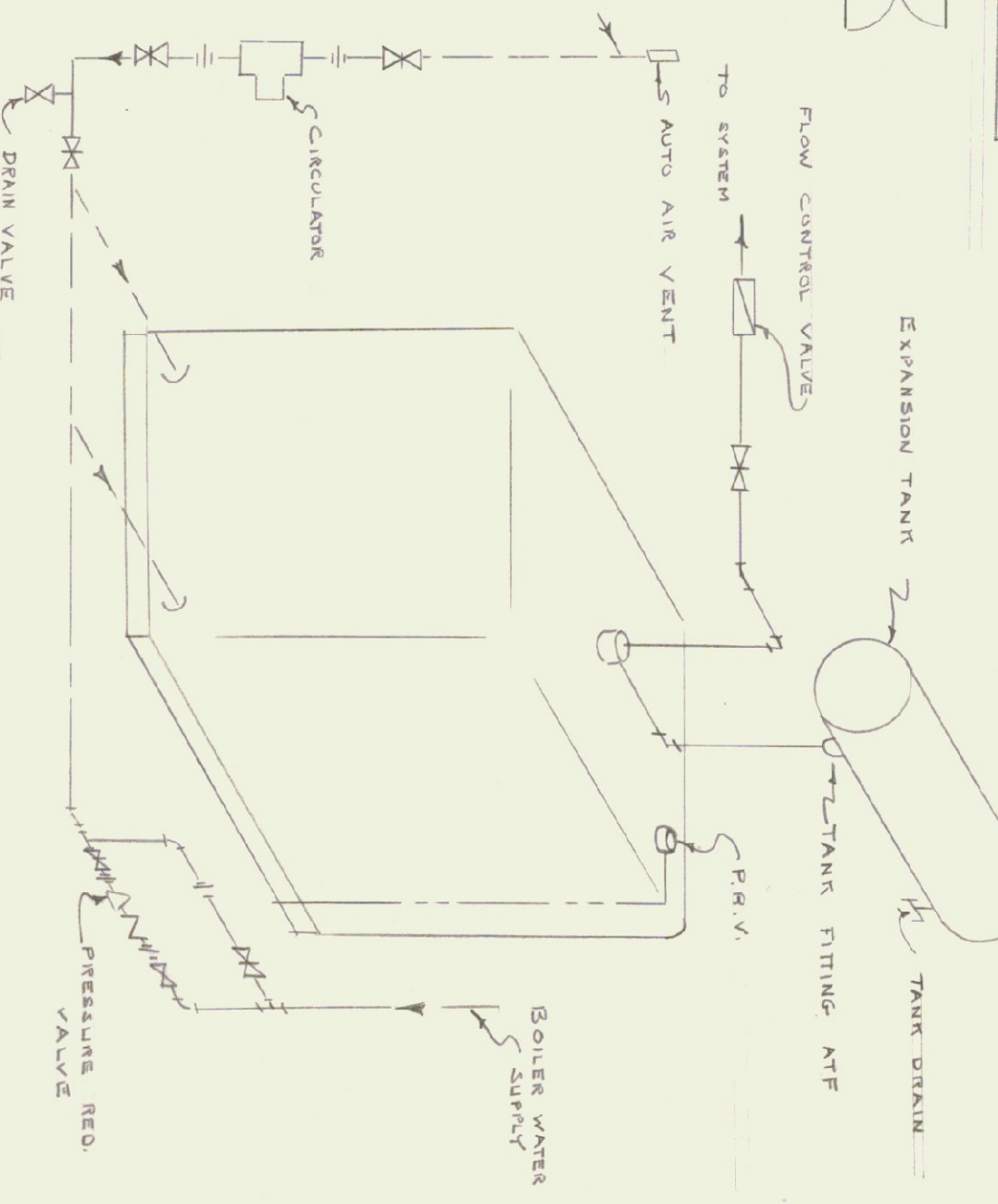
9-1-45	REVISION 5	NEW DETAILS FOR HANGING HEATERS
9-8-45	REVISION 4	CHANGE LOCATION OF 3 HEATERS, ZONE THREE IN CEILING TO PLACES WHERE INDICATED.
8-31-45	REVISION 3	ADOPTION OF 400 VALVE & THERMO STAT
8-11-45	REVISION 2	CHANGE IN PIPING, CHANGE IN PRESSURE REG.
8-31-45	REVISION 1	CHANGE IN LOCATION OF FAN IN ZONE I

DETAIL A HEATER MOUNTING (TYPICAL ONLY)

NOTE: 1 1/2" x 1/2" BAR TO BE DRILLED w/ 6 - 3/8" HOLES FOR ADJUSTMENT OF ANGLE @ 3/4" C.C. BEGINNING 2" FROM ONE END.



HOT WATER BOILER - PIPING SCHEMATIC



DISTRICT #1 GARAGE AND OFFICE BUILDING
VERMONT DEPT. OF HIGHWAYS

STATE BUILDINGS DIVISION
DEPT. OF ADMINISTRATION

DATE: JULY 6 1945
DRAWN BY: R. A. H.

VERMONT