

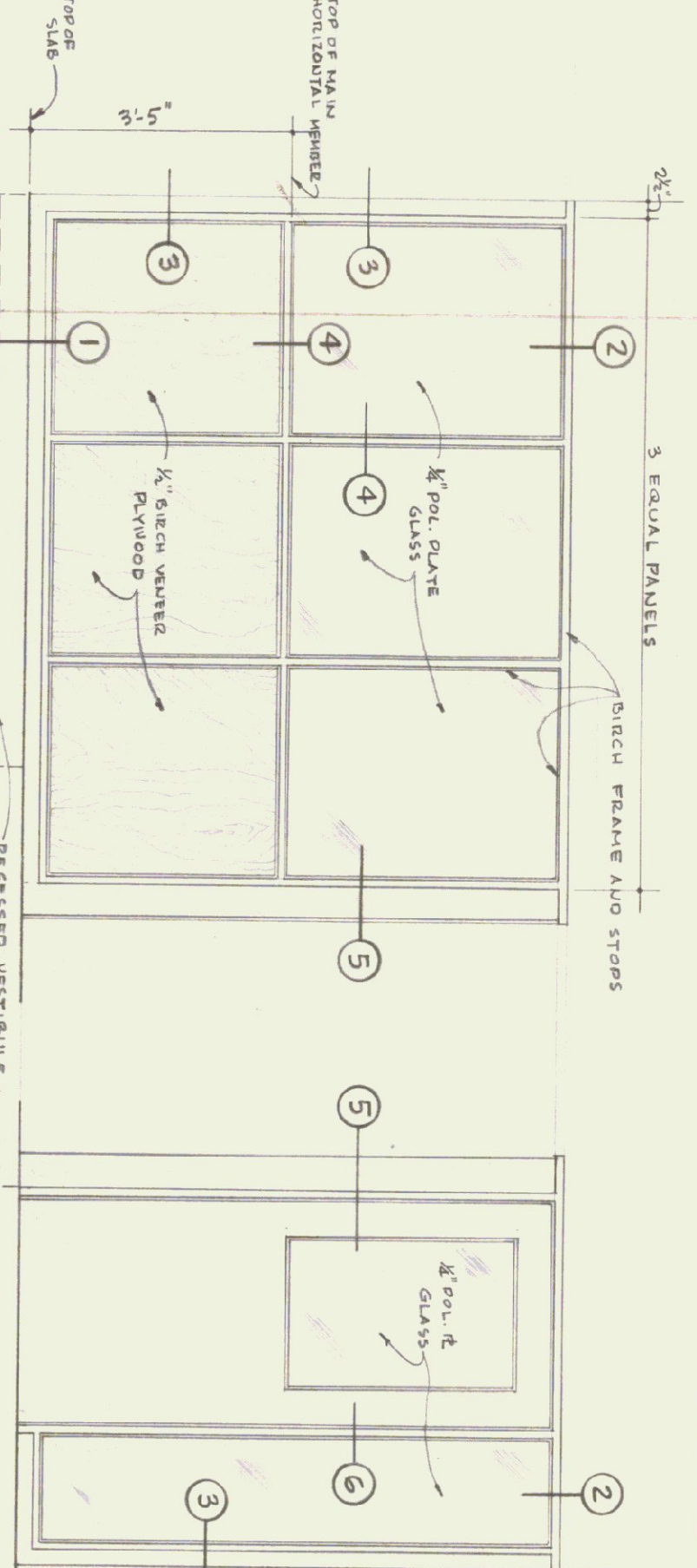
GENERAL NOTES

1. INTERIOR OF BRITISH BUILDING IS NON ROUGH GRADED - GRAVING THROUGHOUT TO BE COMPLETED AND A CONC. SLAB PLACED THROUGHOUT. FINISH FLOOR TO BE CONCRETE SLAB FLOOR. TO ELEVATIONS SHOWN ON CONCRETE SLAB PLAN BY 12.

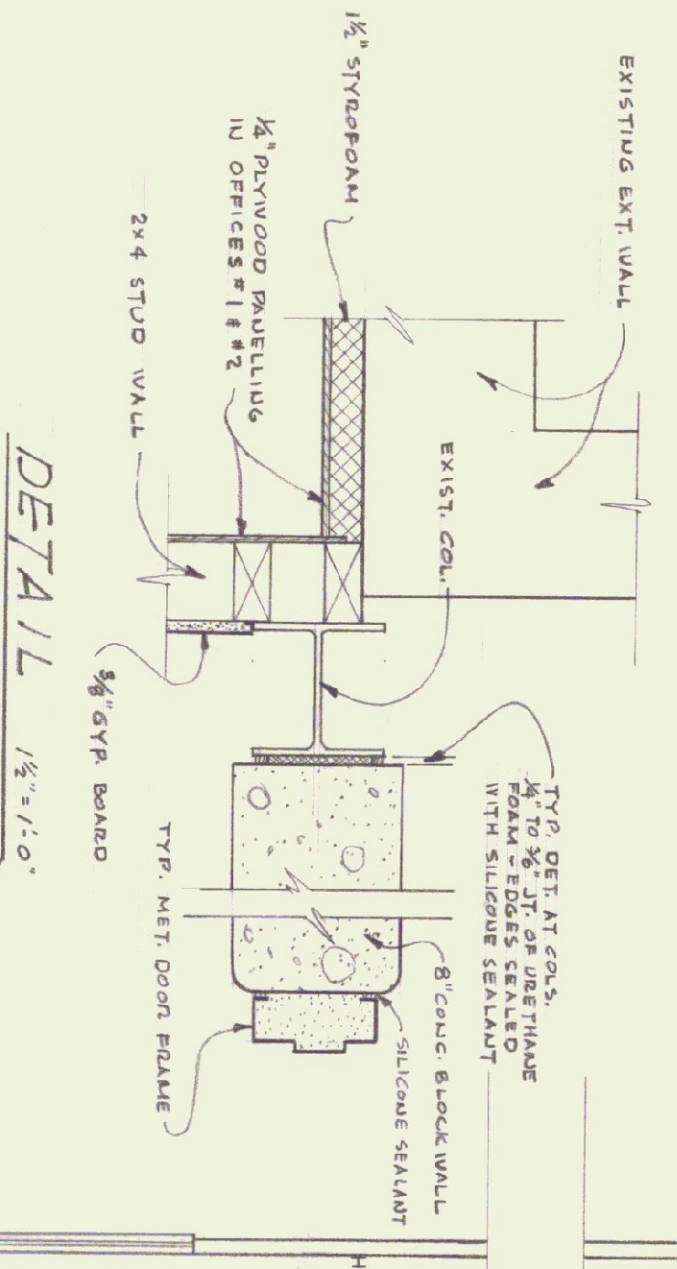
EXIST. BUILDING APPROX. 95'-0"

REMOVE EXIST. STEEL WINDOW & 2" BLOCK WALL. REQUIRED TO BE REBUILT NEW 14" WIDE X 12" HIGH OVERHEAD DOOR.

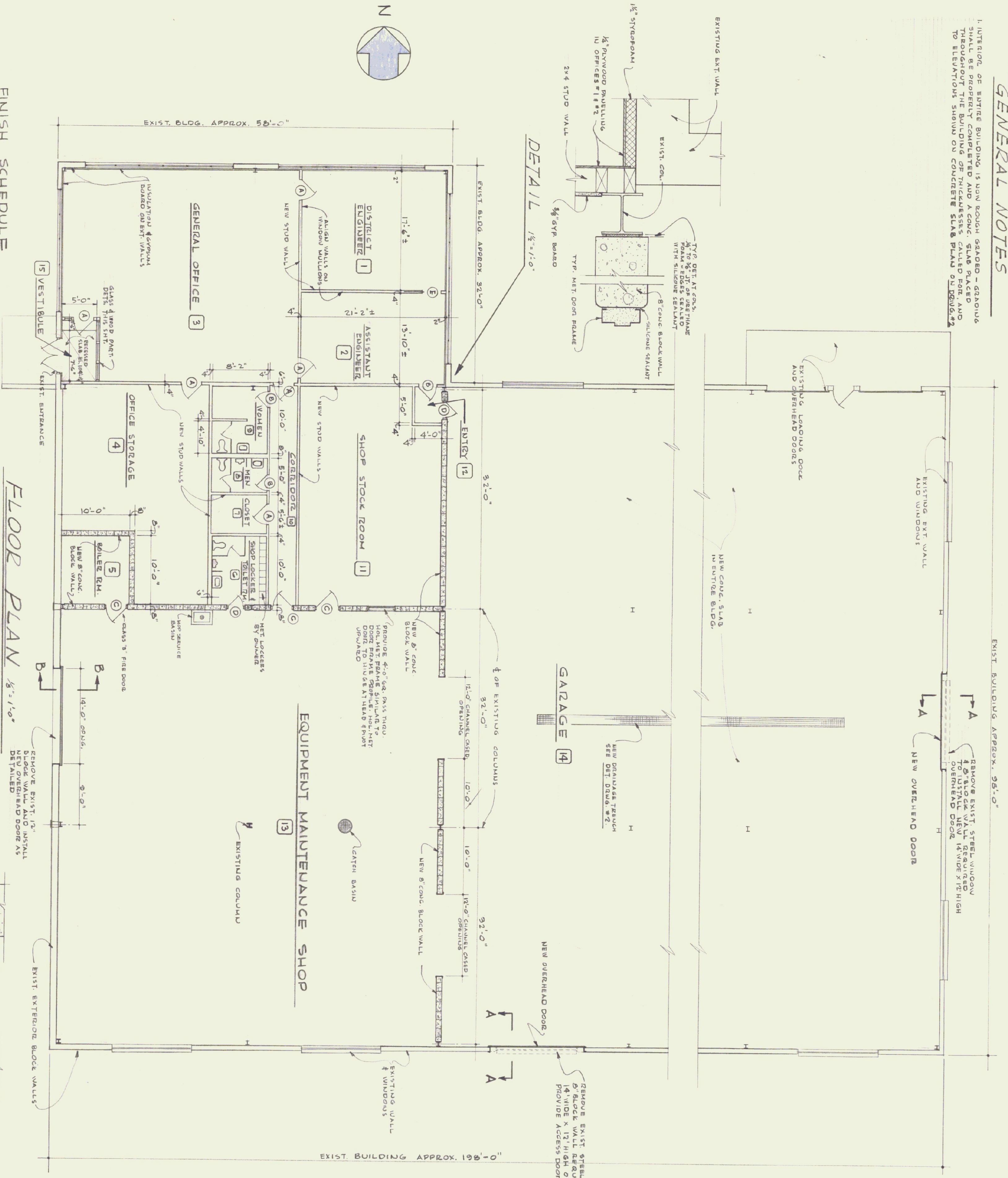
REMOVE EXIST. STEEL WINDOW AND 2" BLOCK WALL. REQUIRED TO BE REBUILT NEW 14" WIDE X 12" HIGH OVERHEAD DOOR. PROVIDE ACCESS DOOR IN THIS DOOR.



WEST ELEVATION
SOUTH ELEV.
VESTIBULE ENCLOSURE LOOKING FROM OFFICE



DETAIL 1/2" x 1/2"



FINISH SCHEDULE

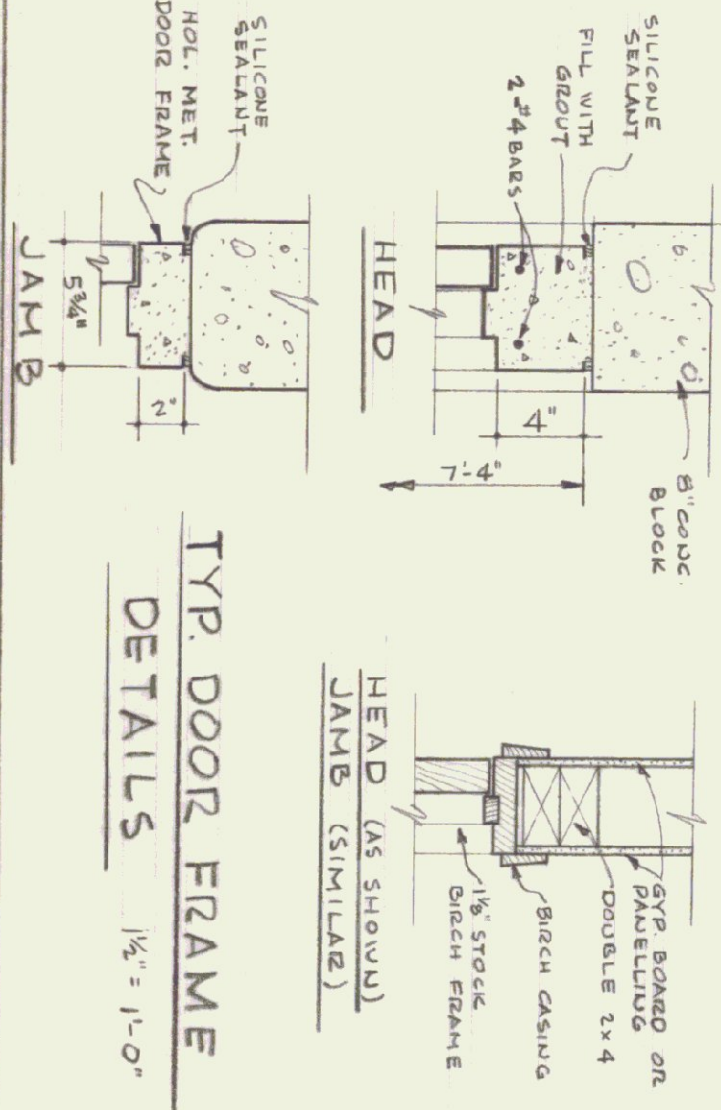
SPACE	NO.	FINISH	WALLS	CILING	REMARKS	DATE
1	DISTRICT ENGINEER	CONC.	CONC.	CONC.		
2	ASSISTANT ENGINEER	CONC.	CONC.	CONC.		
3	SHOP STOCK ROOM	CONC.	CONC.	CONC.		
4	OFFICE STORAGE	CONC.	CONC.	CONC.		
5	TOILET RM.	CONC.	CONC.	CONC.		
6	TOILET RM.	CONC.	CONC.	CONC.		
7	TOILET RM.	CONC.	CONC.	CONC.		
8	TOILET RM.	CONC.	CONC.	CONC.		
9	TOILET RM.	CONC.	CONC.	CONC.		
10	TOILET RM.	CONC.	CONC.	CONC.		
11	SHOP STOCK ROOM	CONC.	CONC.	CONC.		
12	ENTRANCE	CONC.	CONC.	CONC.		
13	EQUIPMENT MAINTENANCE SHOP	CONC.	CONC.	CONC.		
14	GARAGE	CONC.	CONC.	CONC.		
15	VESTIBULE	CONC.	CONC.	CONC.		

FLOOR PLAN 3/8" = 1'-0"

DOOR SCHEDULE

TYPE	MTL.	SIZE	REMARKS
A	WOOD	3'-0" x 7'-0" x 1 1/2"	WOOD
B	WOOD	2'-4" x 7'-0" x 1 1/2"	WOOD
C	MET.	3'-0" x 7'-0" x 1 1/2"	MET.
D	MET.	2'-4" x 7'-0" x 1 1/2"	MET.
E	WOOD	2'-4" x 7'-0" x 1 1/2"	WOOD

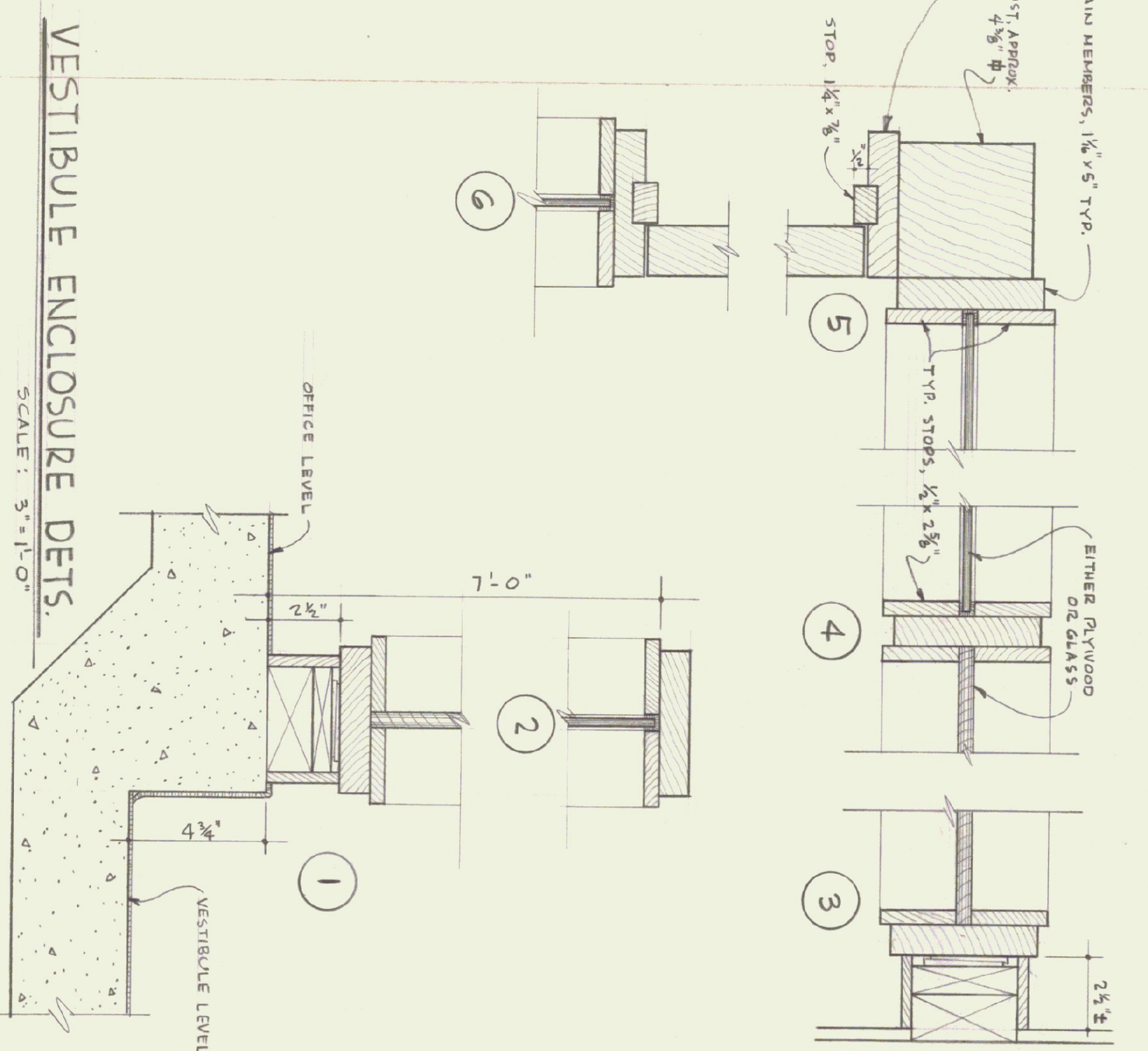
ALL DOORS TO BE PLUSH DOORS EXCEPT AS NOTED
FURNISHED ON TOILET RM. DOORS



TYP. DOOR FRAME
DETAILS 1/2" = 1'-0"

VESTIBULE ENCLOSURE DETS.

SCALE: 3/8" = 1'-0"



DISTRICT #1 GARAGE AND OFFICE BUILDING
VERMONT DEPT. OF HIGHWAYS
BENNINGTON, VERMONT
STATE BUILDINGS DIVISION
DEPT. OF ADMINISTRATION
MAY 11, 1945
DRAWN BY MONTGOMERY, VERMONT