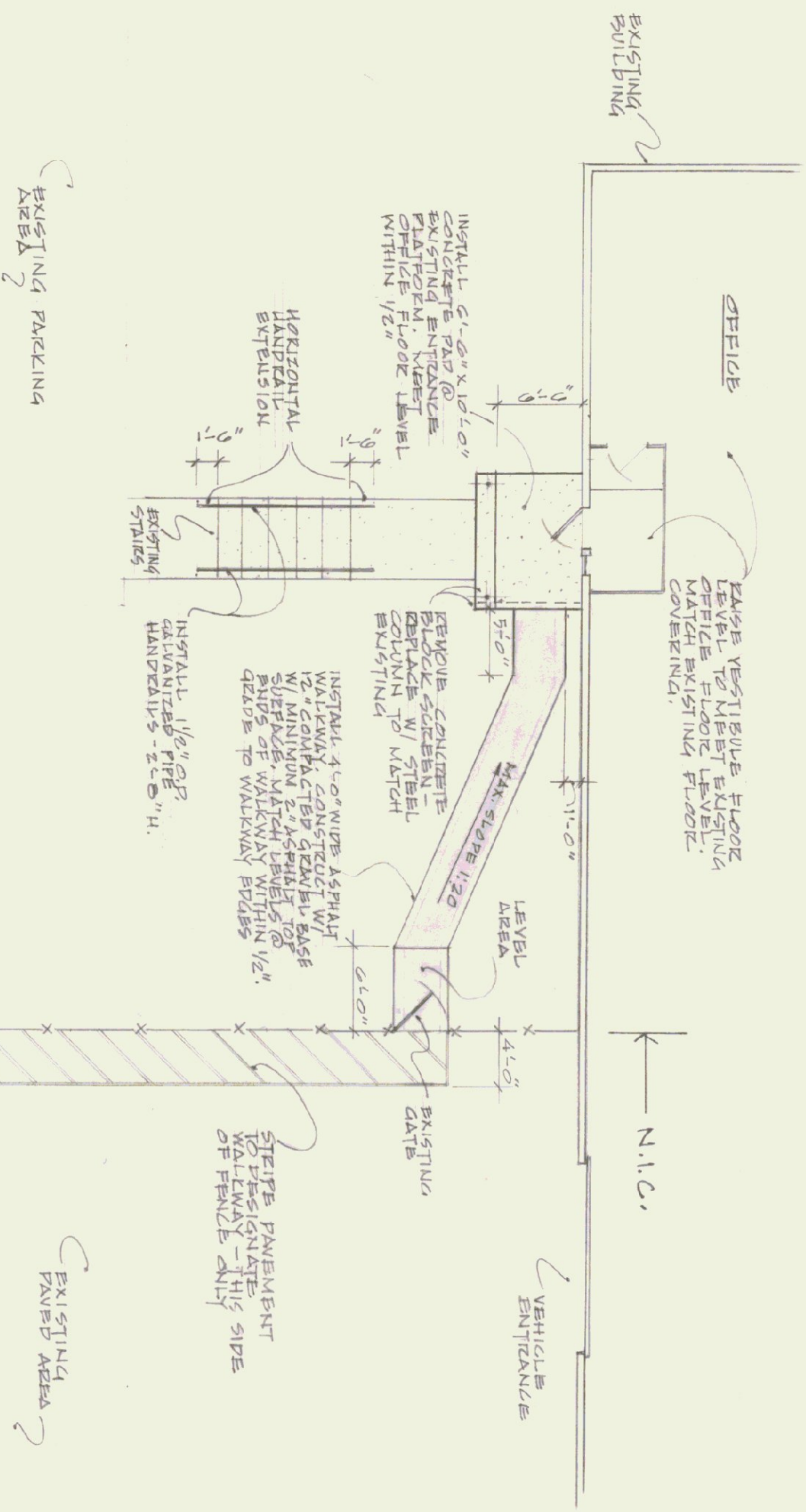
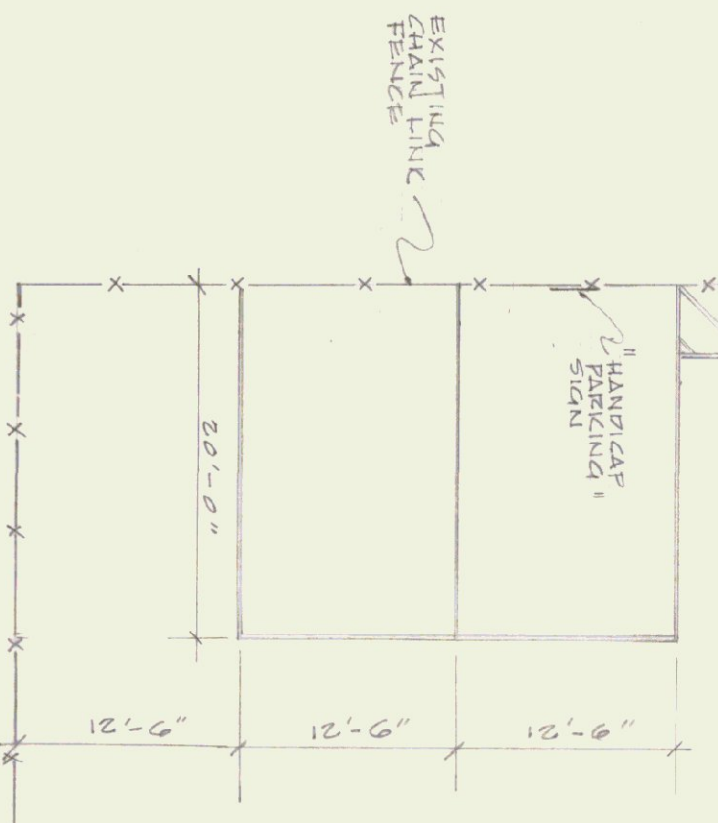


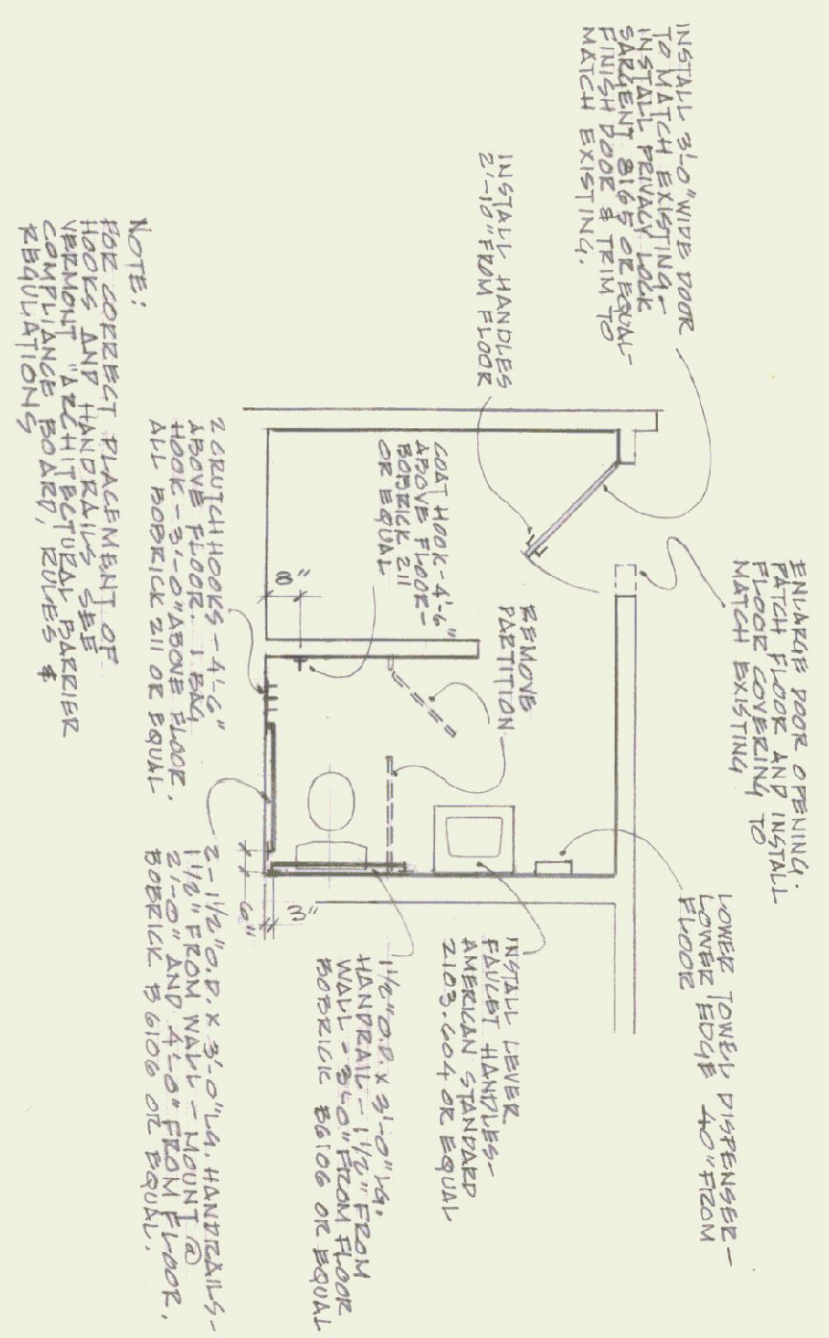
ELEVATION @ FRONT ENTRANCE  
1/4" = 1'-0"



PLAN @ FRONT ENTRANCE  
1" = 10'



NOTE: VERIFY MARKING AND HANDICAP SIGN PLACEMENT TO BE INSTALLED BY AGENCY OF TRANSPORTATION.



TOILET ROOM FOR HANDICAPPED  
(FORMERLY LAVATORY ROOM)  
1/4" = 1'-0"

STATE OF VERMONT			
DIVISION OF STATE BUILDINGS			
AGENCY OF ADMINISTRATION			
MONTPELIER, VERMONT			
ENTRANCE & TOILET ROOM MODIFICATIONS			
A.O.T. DISTRICT OFFICE #1			
BENNINGTON, VT.			
DATE:	4/28/80	REVISIONS:	
DRAWN BY:	J. HUGHES	APPROVED BY:	[Signature]
DWG. NO.	1	OF	1