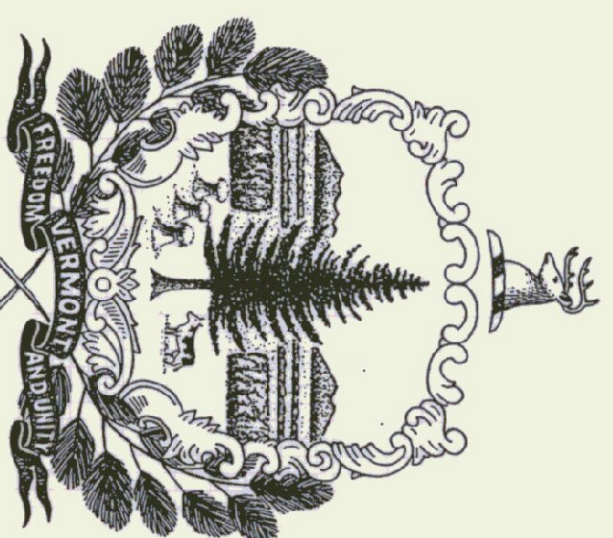


AGENCY OF TRANSPORTATION
STATE OF VERMONT
SALT AND SAND SHEDS
BENNINGTON, VERMONT

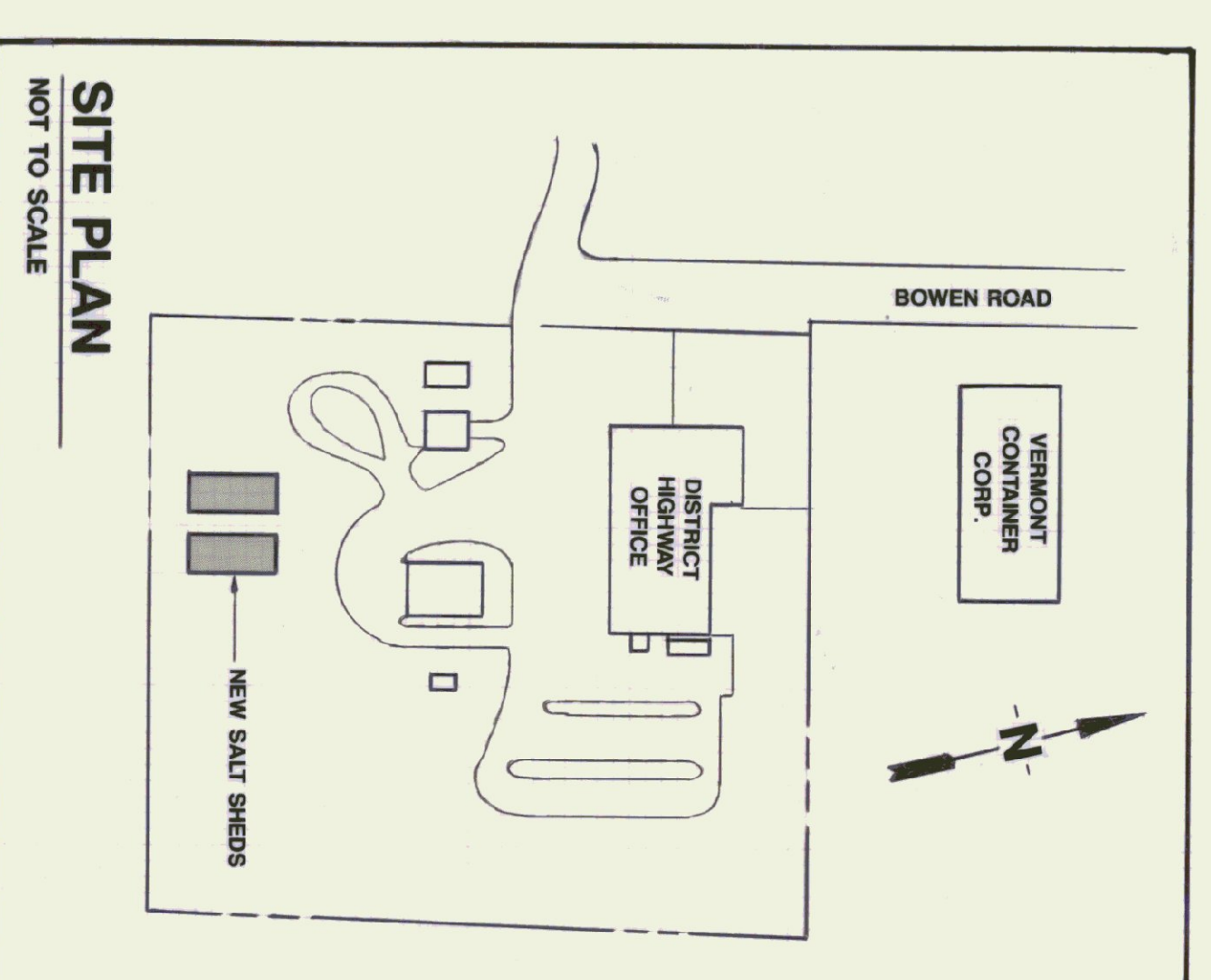
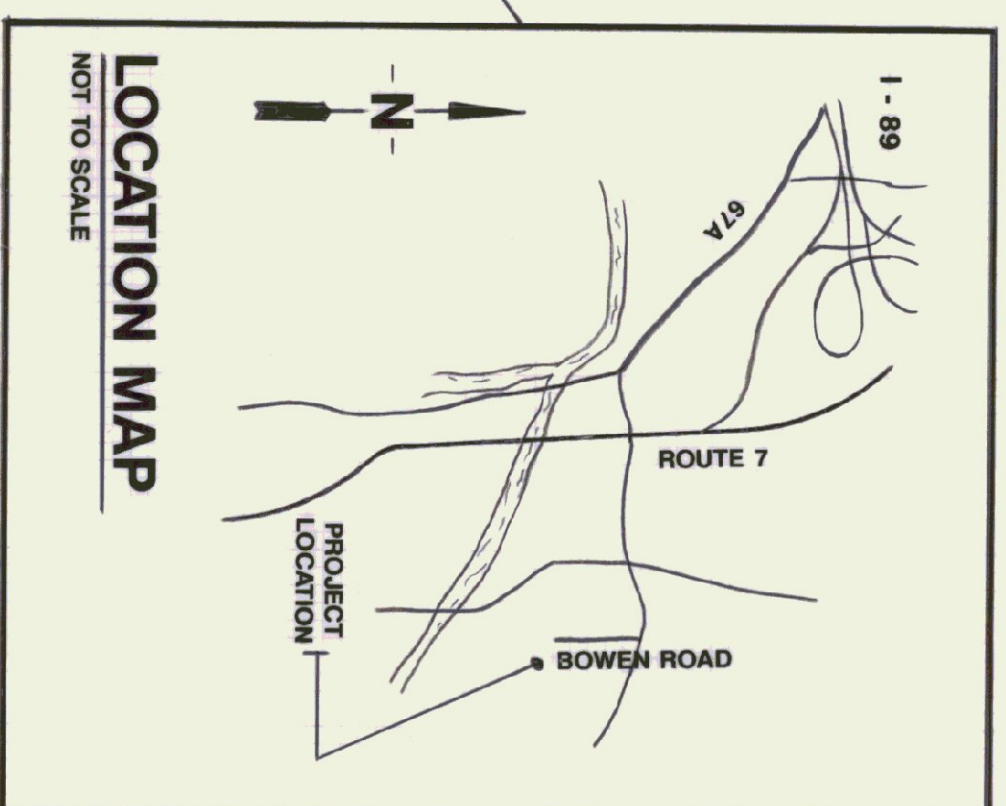
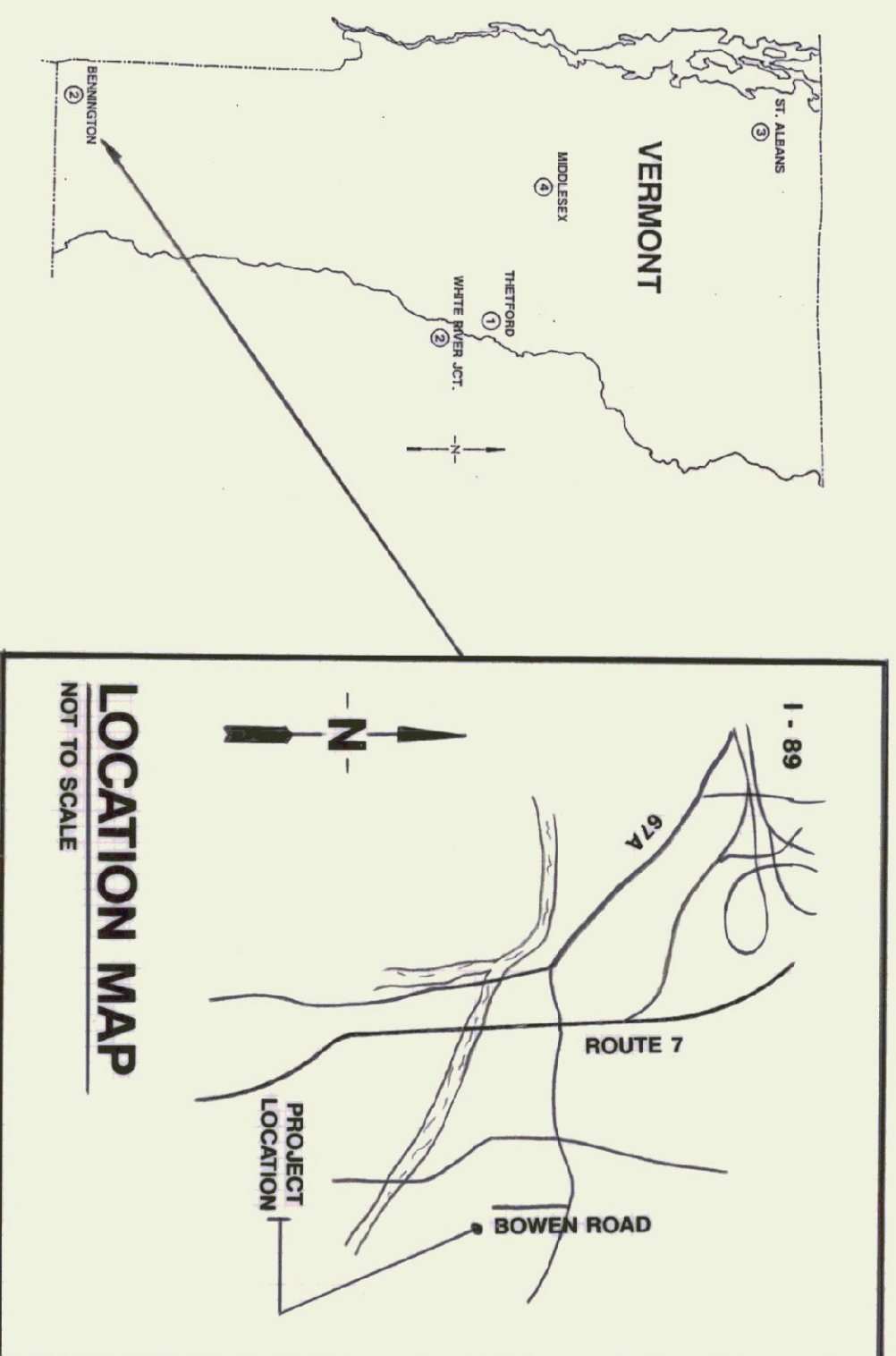
SEPTEMBER 5, 1991



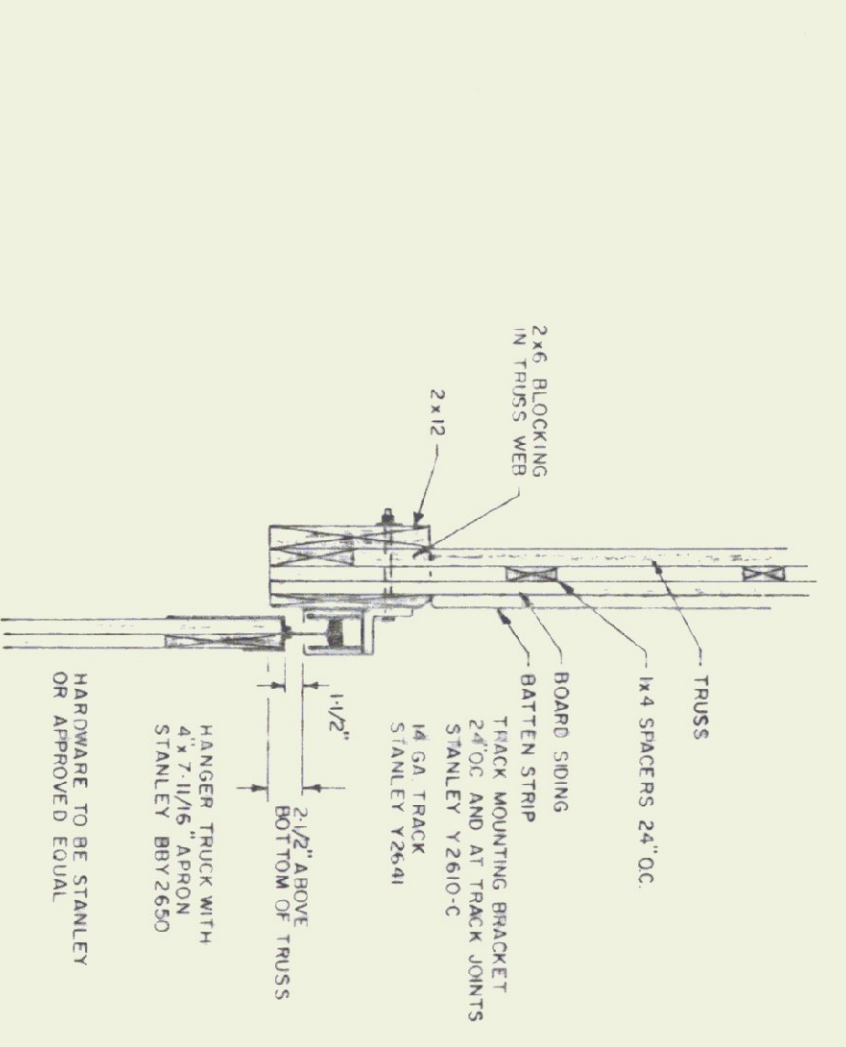
AGENCY OF ADMINISTRATION
DEPARTMENT OF STATE BUILDINGS
2 GOVERNOR AIKEN AVENUE
MONTPELIER, VERMONT 05602
JOHN J. ZAMPIERI, COMMISSIONER

GOVERNOR HOWARD DEAN

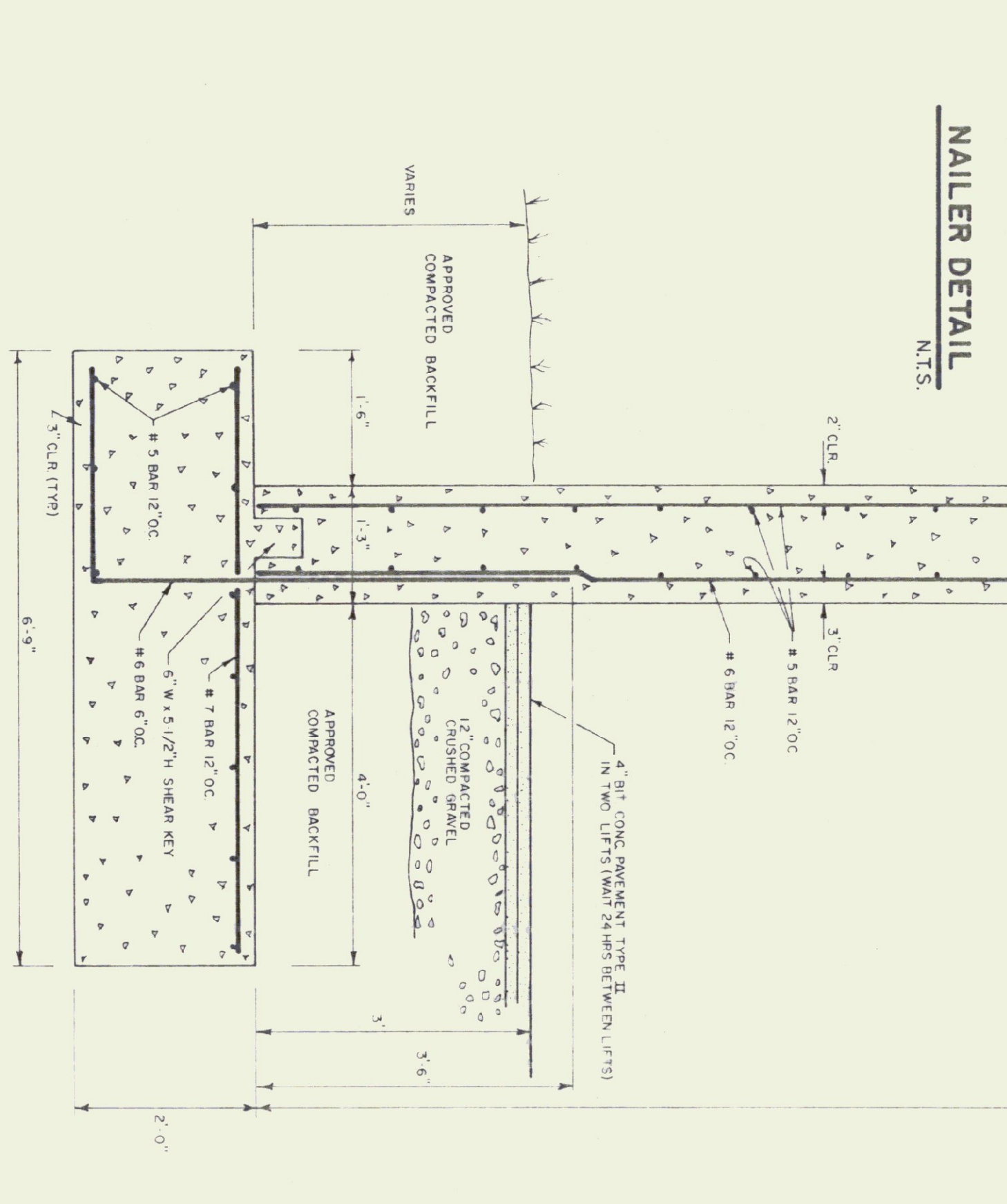
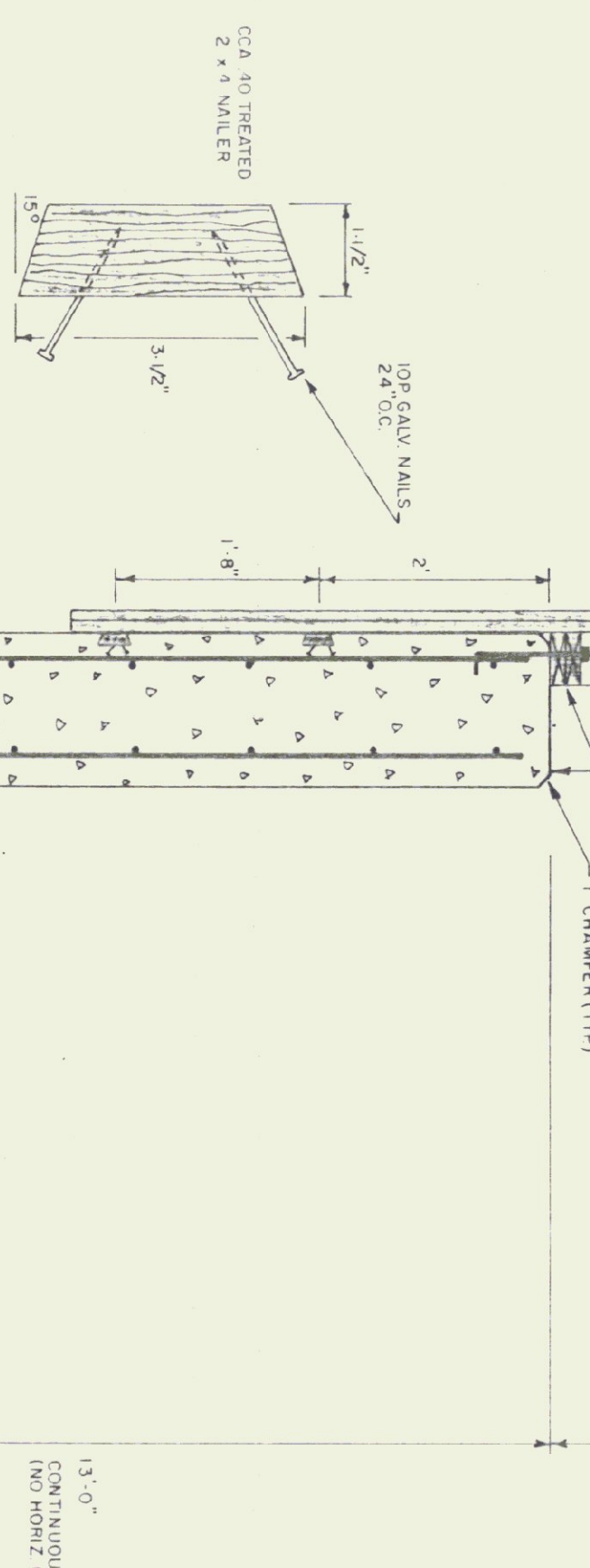
AGENCY OF TRANSPORTATION
133 STATE STREET
MONTPELIER, VERMONT 05602
PATRICK J. GARAHAN, SECRETARY



- TRUSS NOTES**
- TRUSS MANUFACTURER TO PROVIDE THE DEPT. OF STATE BUILDINGS ENGINEER A SET OF ENGINEERING & SHAPED DIMENSIONS FOR APPROVAL PRIOR TO TRUSS MANUFACTURE
 - TRUSS MANUFACTURER TO PROVIDE THE CONTRACTOR WITH ALL NECESSARY INSTRUCTIONS FOR PROPER TRUSS INSTALLATION, ANCHORAGE, BRACING ETC.
 - TRUSS DESIGN LOADS IN ACCORDANCE WITH THE 1987 HCCA FOR VERMONT
 - LIVE - PER 1987 HCCA FOR VT (50 PSF MIN.)
 - DEAD - AS CALCULATED FROM TRUSS & ROOF MATERIALS
 - WIND - 25 PSF ON BOTTOM CHORD
 - DIAGONAL WIND BRACING REQUIRED



- LUMBER NOTES**
- FRAMING MEMBERS TO BE KILN DRIED CONSTRUCTION GRADE SPEC. 70%
 - PLATES AND NAILERS IN CONTACT WITH CONCRETE TO BE CCA 40 TREATED
 - BRAND AND PATTERN SIDING TO BE NATIVE ROUGH CUT WITH "X" SIDING TO BE RANDOM WIDTH 6" - 8" CROWN
 - ALL HORIZONTAL JOINTS IN SIDING TO BE ON ONE SIDE OF HORIZONTAL BLOCKING, BOTTOM PLATE OR NAILERS
- FITTING NOTES**
- ALL JOISTS AND BATTENS TO BE STAINED WITH ONE COAT OF ALL SIDING PRIOR TO INSTALLATION
 - AFTER INSTALLATION, EXTERIOR SIDING TO RECEIVE AN ADDITIONAL COAT OF STAIN
 - SIDING TO BE OLIVE/OIL BASE SEMI TRANSPARENT OYFORD BROWN # 713



CONCRETE NOTES

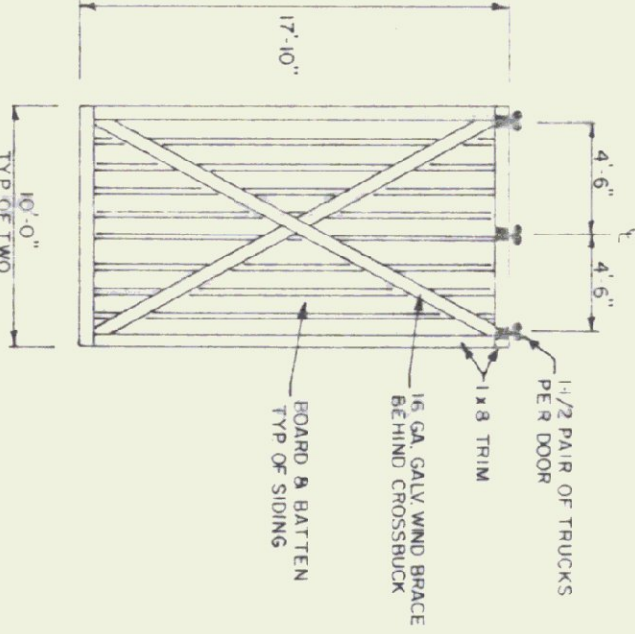
- ALL CONCRETE TO BE 28 DAYS WITH MAXIMUM SLUMP OF 4"
- EXPOSED WALLS TO BE DRESS FINISH
- 1/2" V JOINTS IN EXPOSED FACE OF CONST JOINTS
- 3/8" CHAMFER IN OUTER FACE OF EXPANSION JOINTS
- L IRON CAST INTO WALL CORNERS AT DOOR OPENINGS
- RE BAR TO BE CONTINUOUS THROUGH CONST JOINTS
- NO HORIZONTAL CONST JOINTS IN WALLS
- NO CONST OR EXP JOINTS REQUIRED IN FOOTINGS
- ALL REBAR TO BE GRADE 60
- CONTRACTOR TO LEAVE NO METAL WITHIN 1" OF SURFACE USE 1" DEEP PLASTIC CONES AT ALL TIES AND RUNS ALL THE HOLES WITH AN APPROVED NON SHRINK GROUT
- RE BAR TO BE STORED ON BLOCKING 4" MIN ABOVE GROUND
- CONCRETE JOINTS TO PROVIDE TEST CYLINDERS FOR STRENGTH TESTING
- CONCRETE JOINTS TO BE CONDUCTED ON SITE AIR TEST

TRACK MOUNT DETAIL

N.T.S.

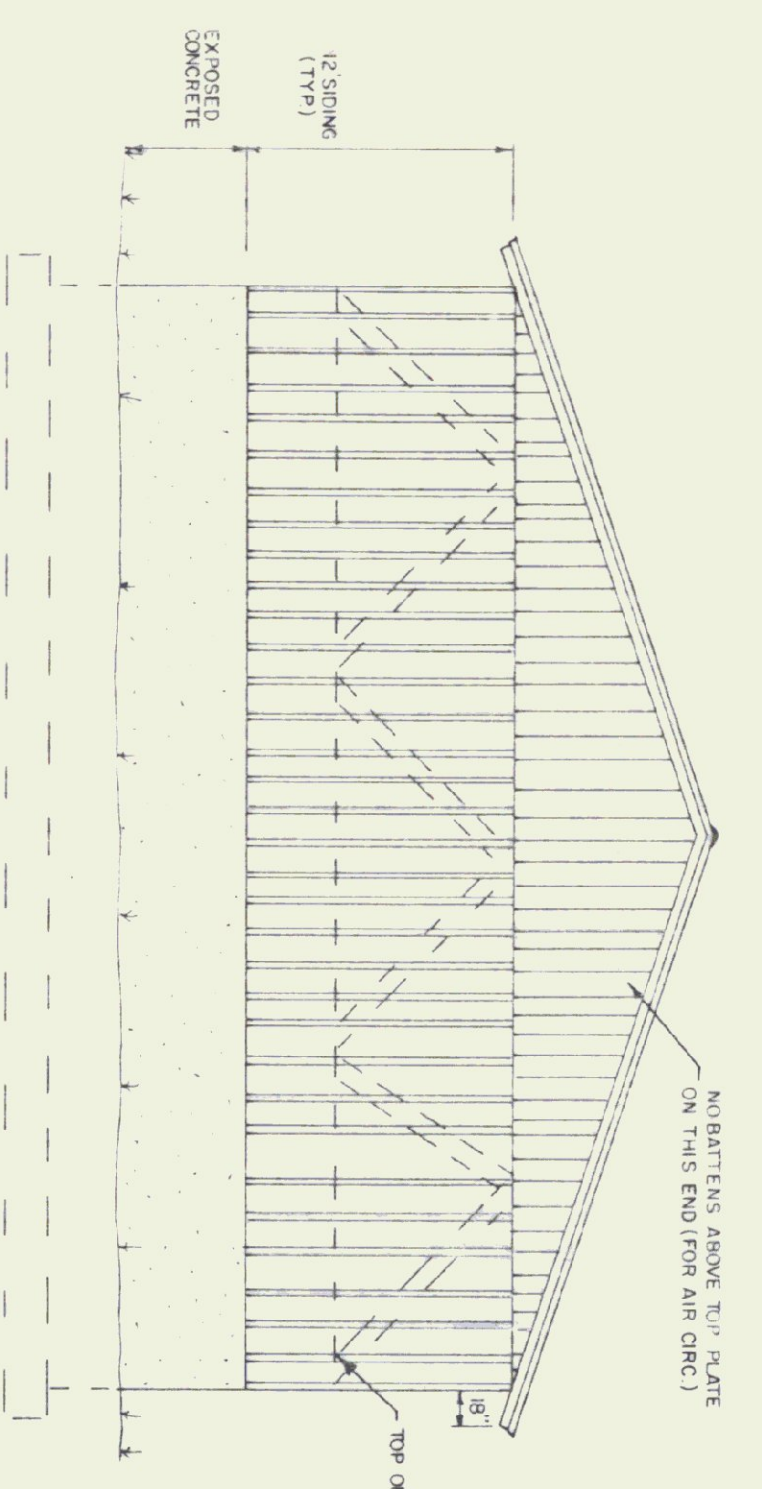
DOOR DETAIL

N.T.S.



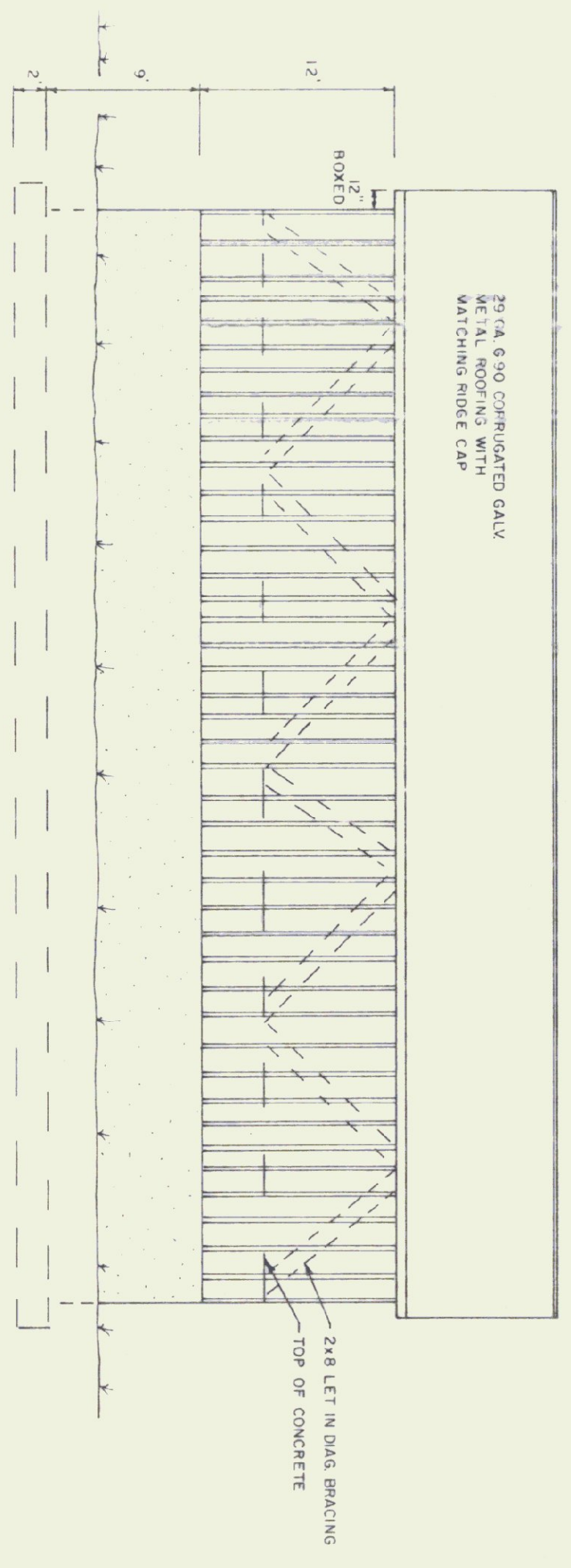
BACK ELEVATION

1/8" = 1'-0"



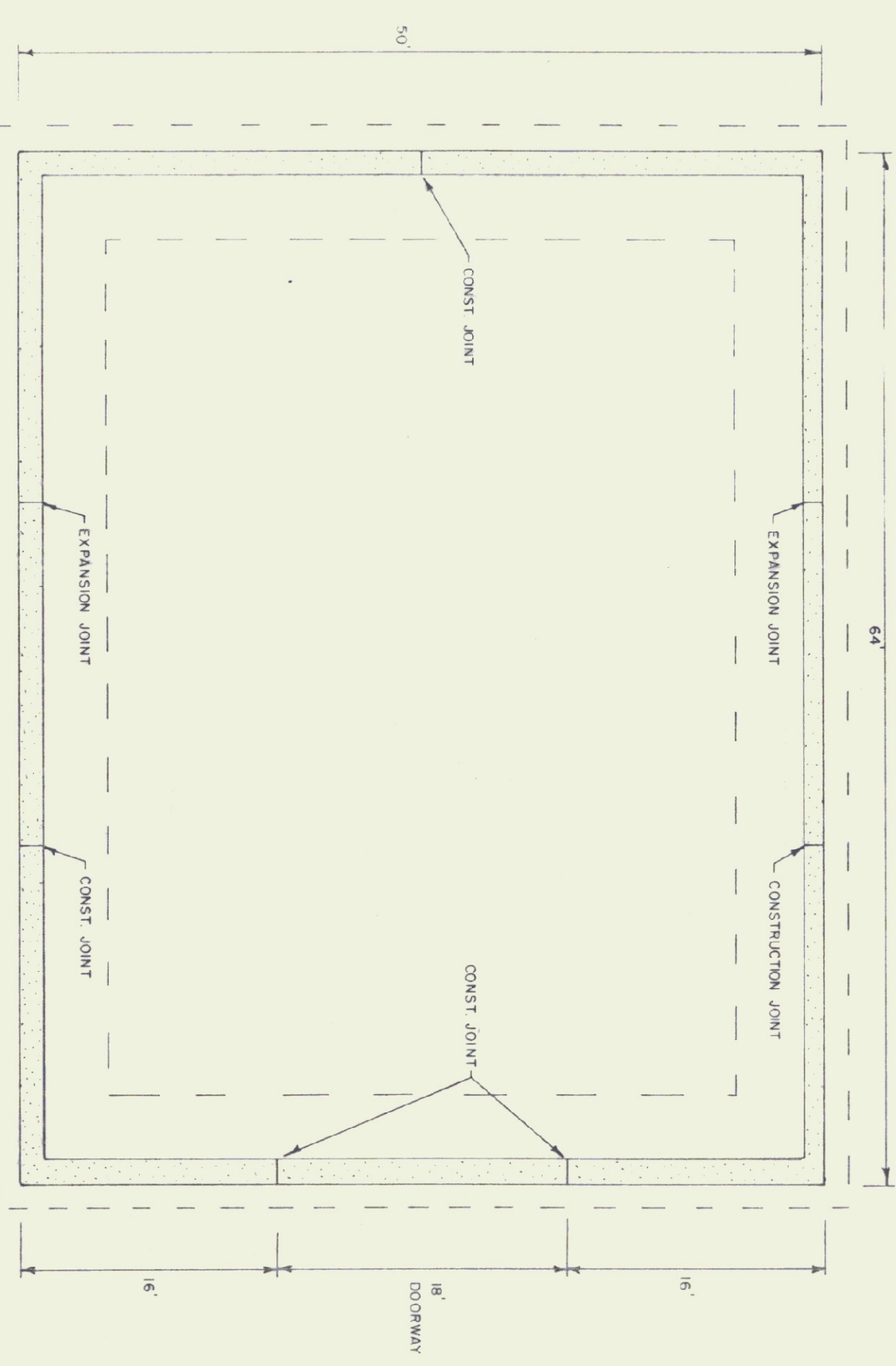
FRONT ELEVATION

1/8" = 1'-0"



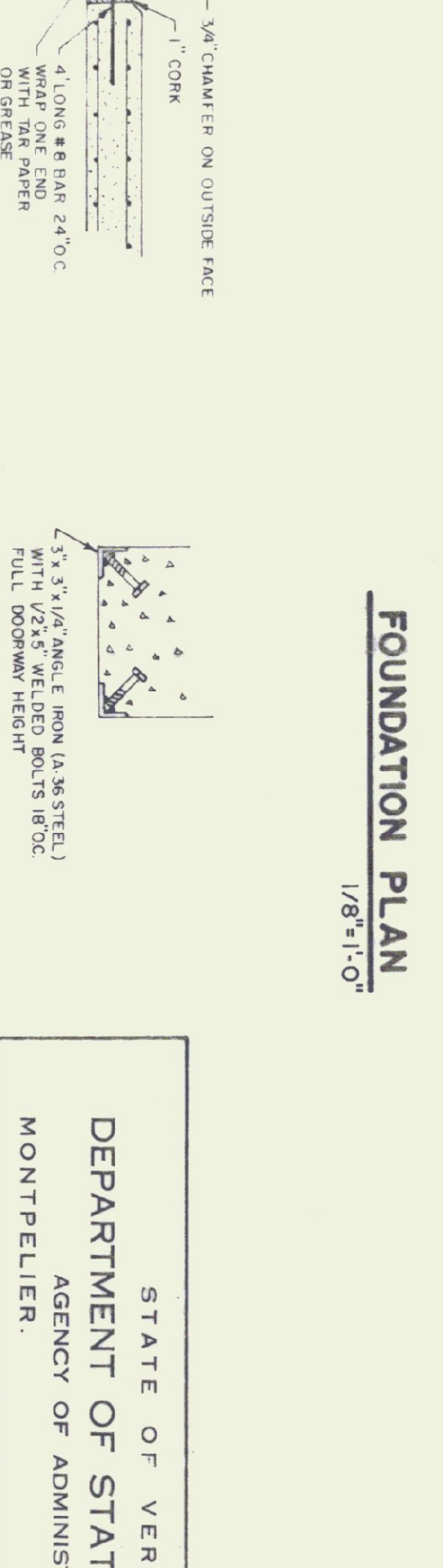
SIDE ELEVATION

1/8" = 1'-0"



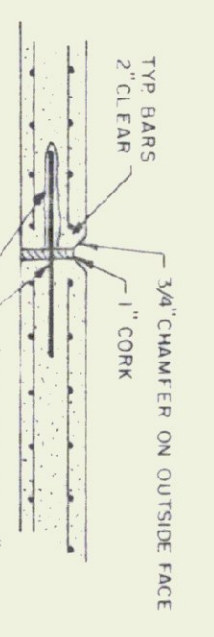
FOUNDATION PLAN

1/8" = 1'-0"



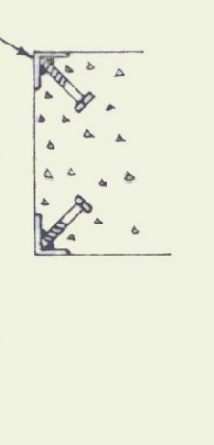
EXPANSION JOINT DETAIL

N.T.S.



CORNER GUARD

N.T.S.



CORNER DETAIL

N.T.S.



NOTE: EXACT BUILDING LOCATION AND FLOOR ELEVATION TO BE DETERMINED IN THE FIELD BY THE ENGINEER.

STATE OF VERMONT		DEPARTMENT OF STATE BUILDINGS	
AGENCY OF ADMINISTRATION		MONTPELIER, VERMONT	
50' x 64'		SALT/SAND SHED	
BENNINGTON MAINTENANCE FACILITY		BENNINGTON VERMONT	
DATE: SEPT 15, 1991	SCALE: AS NOTED	REVISIONS:	DWG NO:
DRAWN BY: S.K. JAMAWICZ	APPROVED BY:		1 OF 1