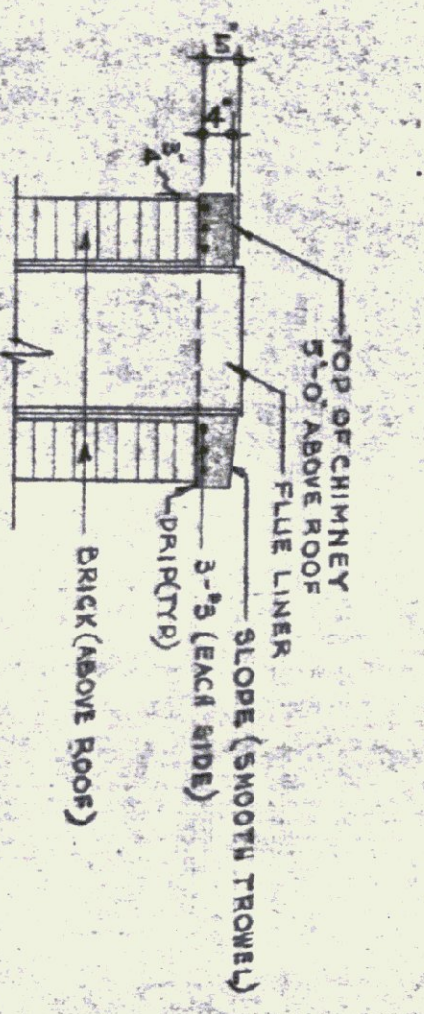
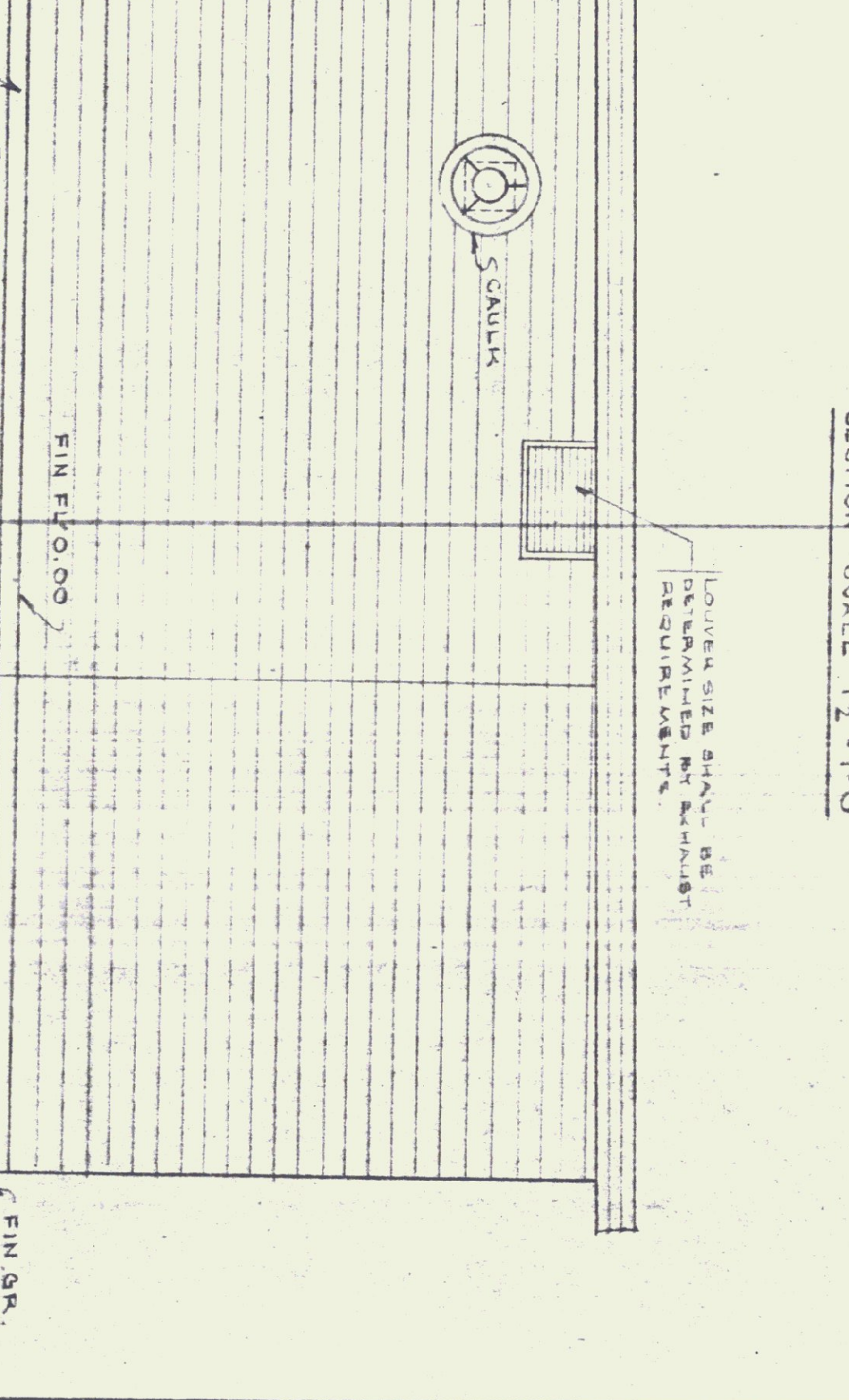
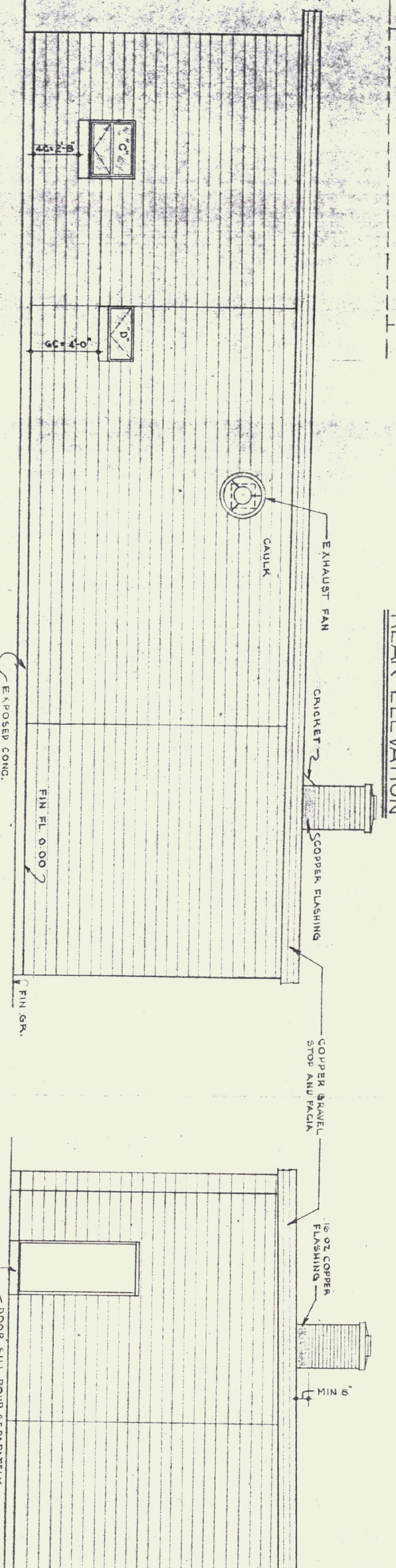
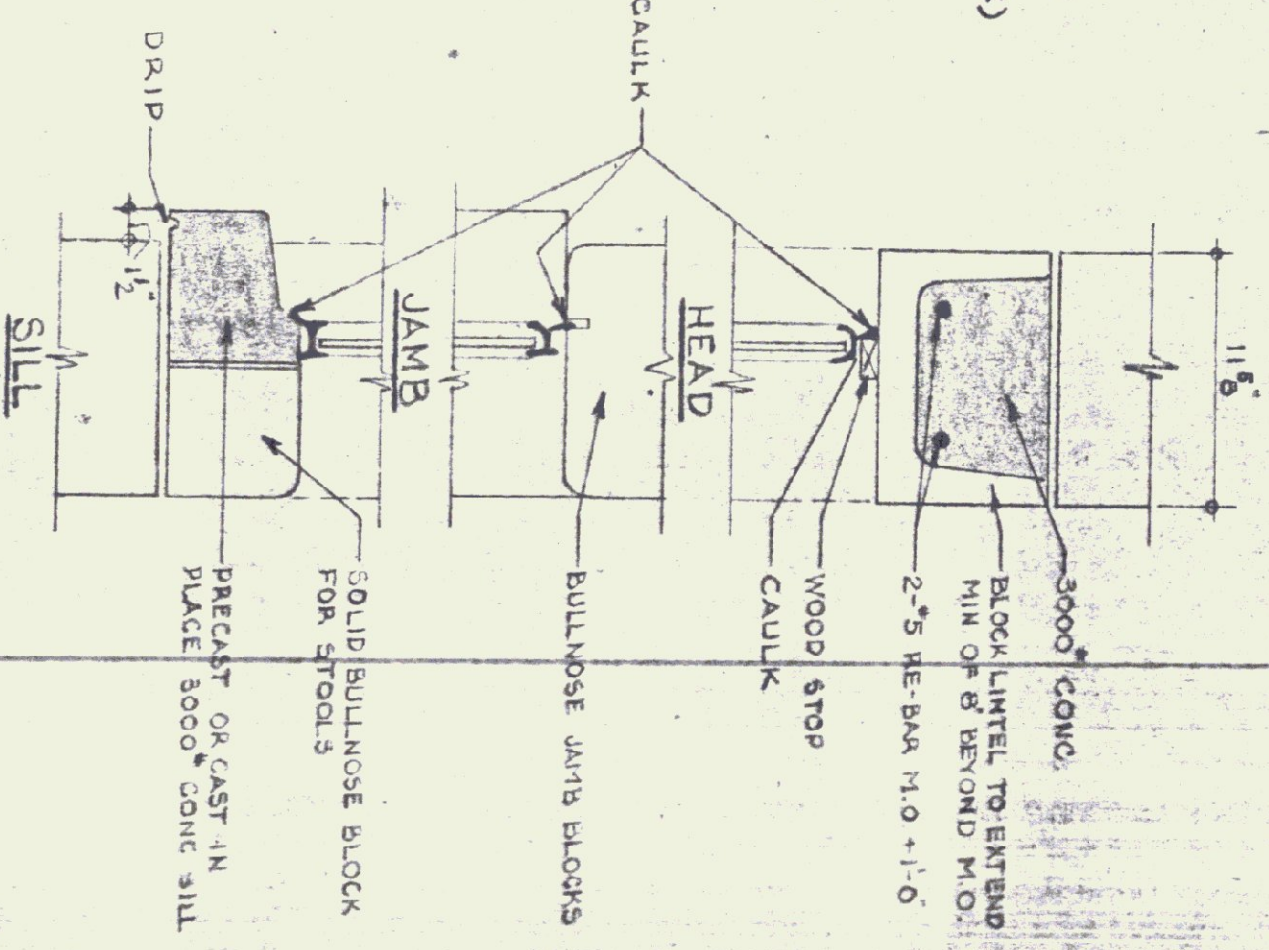
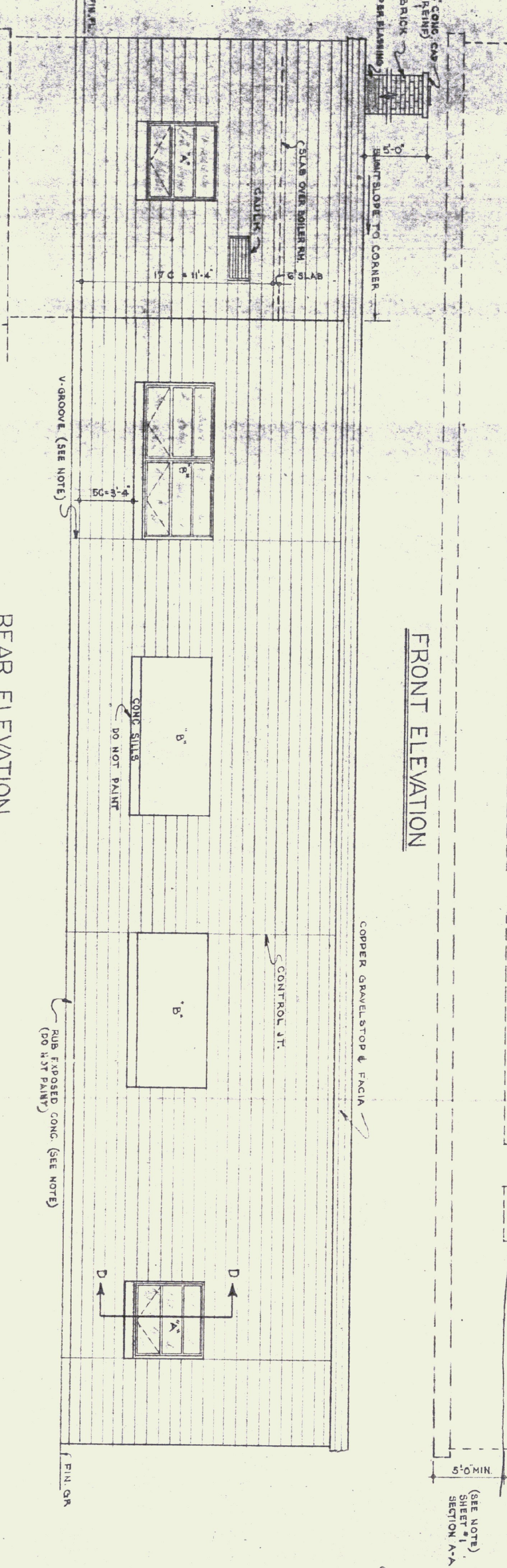
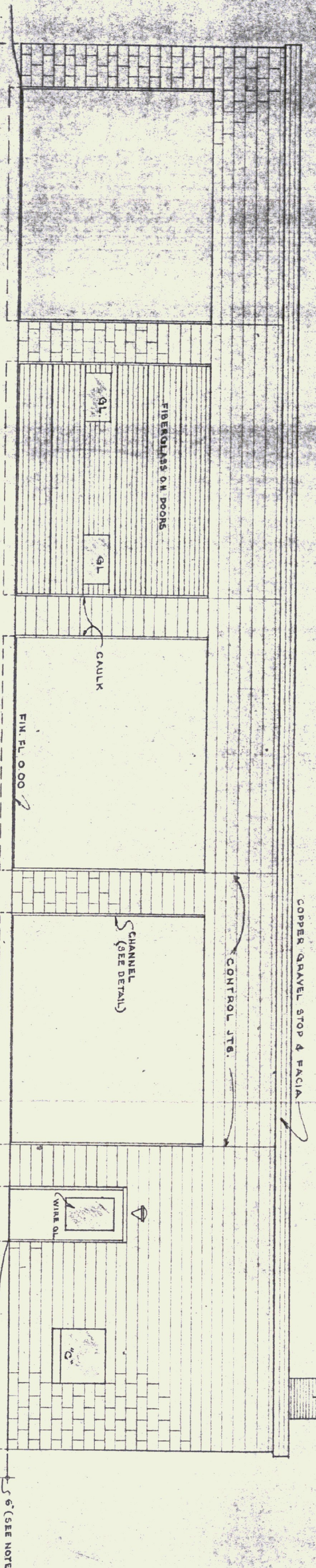


GENERAL NOTES

FINISH GRADE SHALL BE MIN. OF 6" BELOW FINISH FLOOR AT EDGE ON RIGHT, LEFT & REAR ELEVATIONS. FINISH GRADE SHALL BE 18" BELOW FINISH FLOOR AT FRONT ENTRY. WORKMAN LIKE TO PREVENT WATER PENETRATION IN A CONCRETE UNDER CONSTRUCTION JOINTS SHALL HAVE A V-GROOVE TO 4" BELOW FINISH GRADE. BUILD CONTROL JOINTS AS PER SECTION 9-5 ON DWG 3. GAULKER ALL JOINTS BETWEEN MASONRY AND WOOD OR METAL.



DATE	DESIGNED BY	DWG. NO.
10-18-74		A 2
DRAWN BY	APPROVED BY	OF
STUDIO SEVEN INC.		

SCALE: As Noted

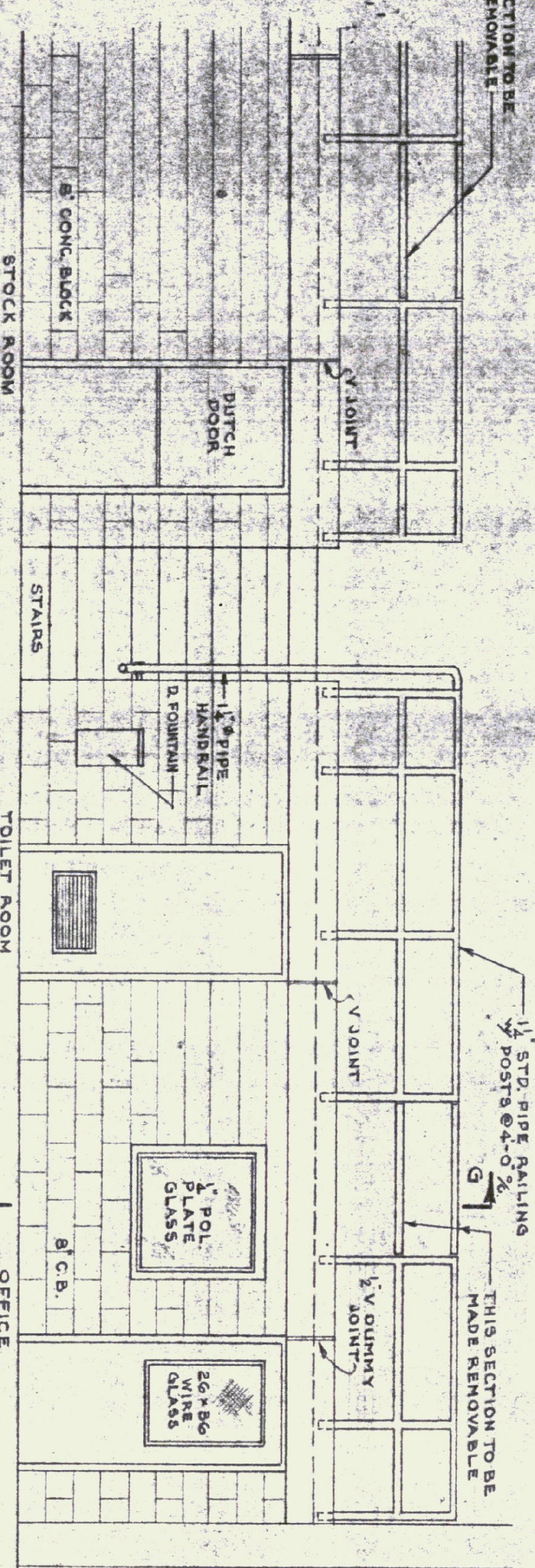
STATE OF VERMONT
DIVISION OF STATE BUILDINGS
AGENCY OF ADMINISTRATION
MONTPELIER, VERMONT

Standard Four Bay Highway Garage Bldg.
ELEVATIONS

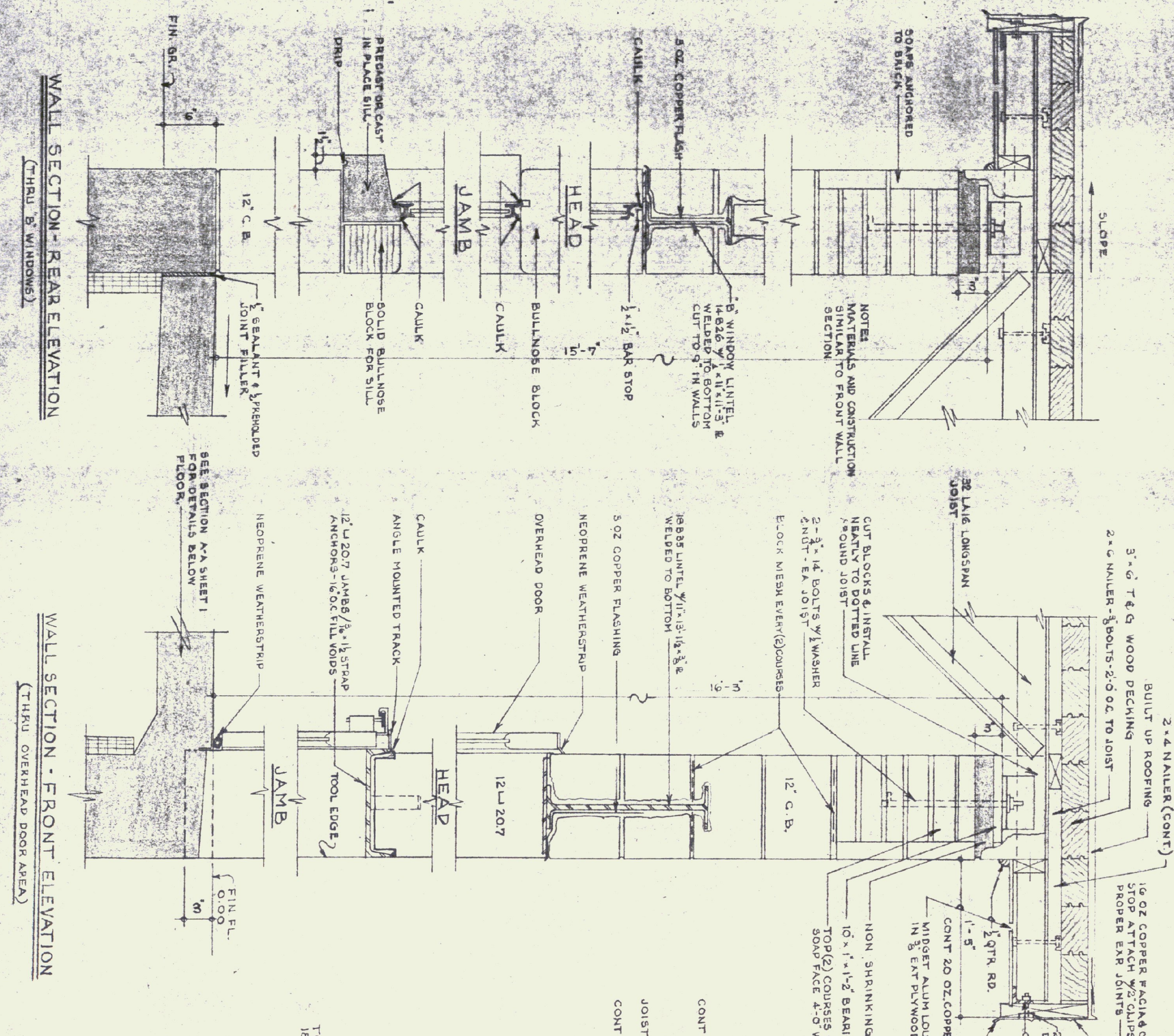
REVISIONS	DATE	REVISION

ELEVATIONS SCALE: 1/4" = 1'-0"

THIS SECTION TO BE MADE REMOVABLE

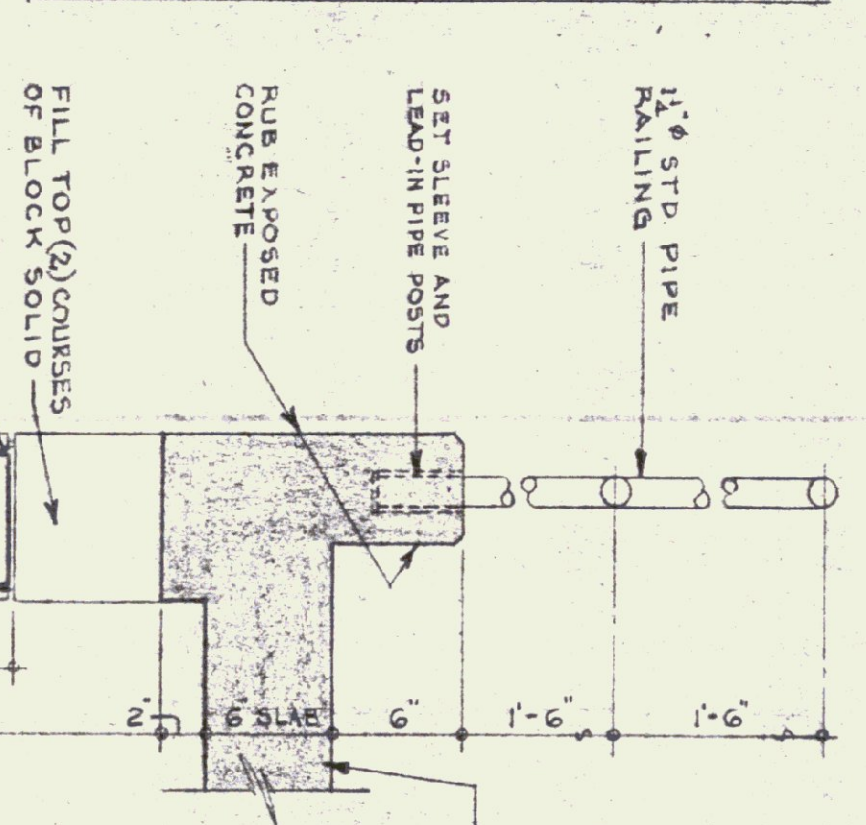


PARTIAL ELEVATION LOOKING TOWARDS GALLERY
DO NOT SCALE

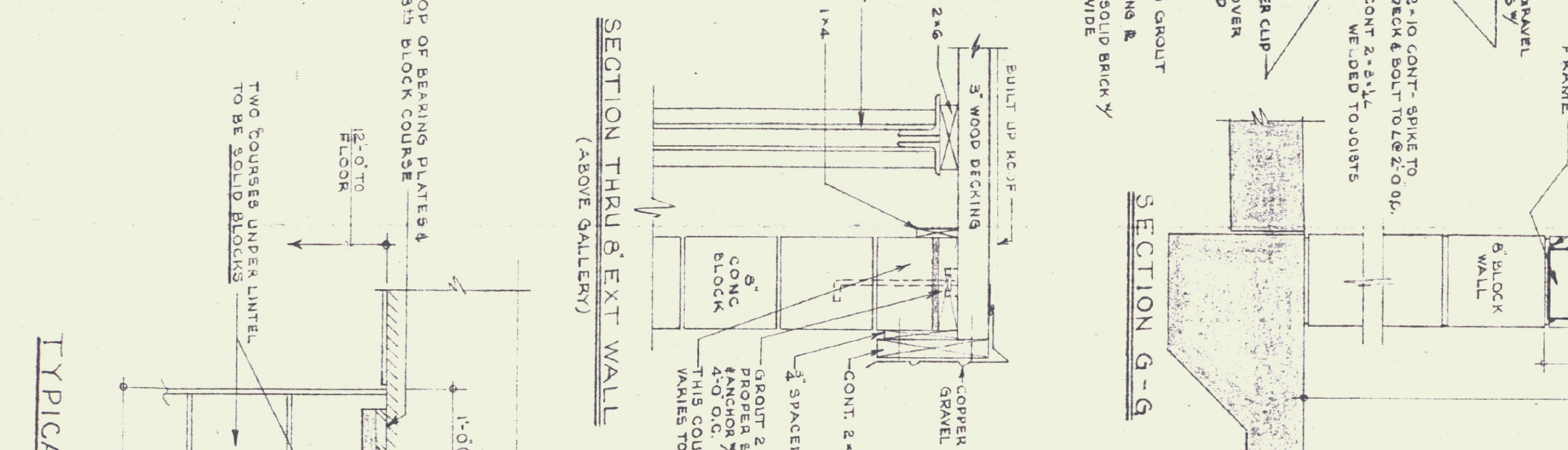


WALL SECTION - REAR ELEVATION
(THRU B WINDOWS)

WALL SECTION - FRONT ELEVATION
(THRU OVERHEAD DOOR AREA)



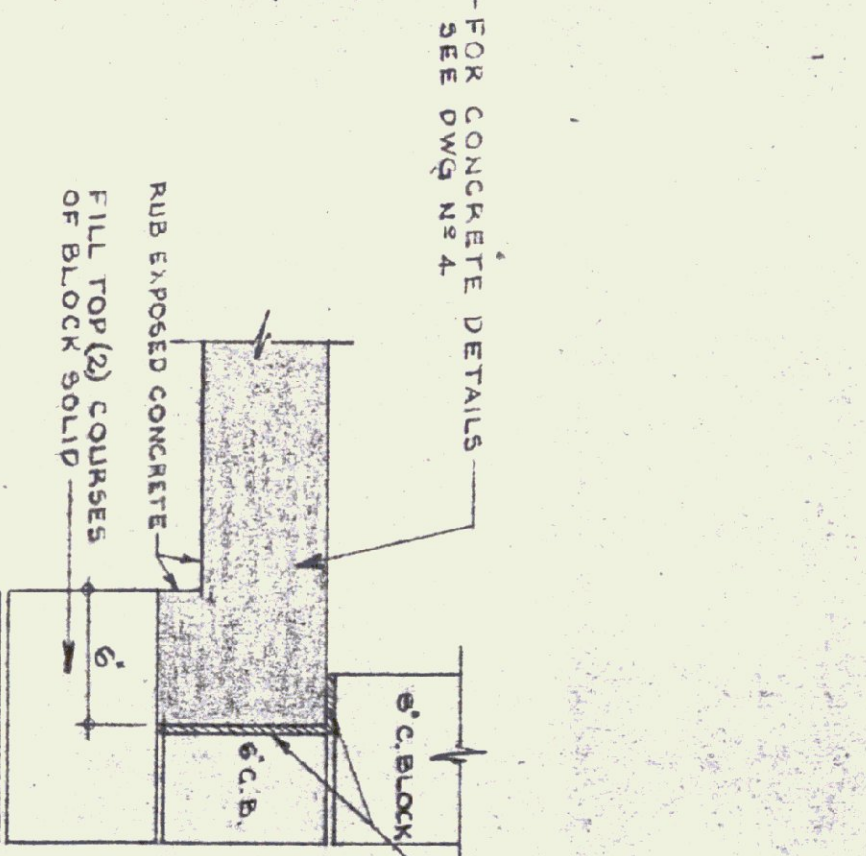
SECTION G-G



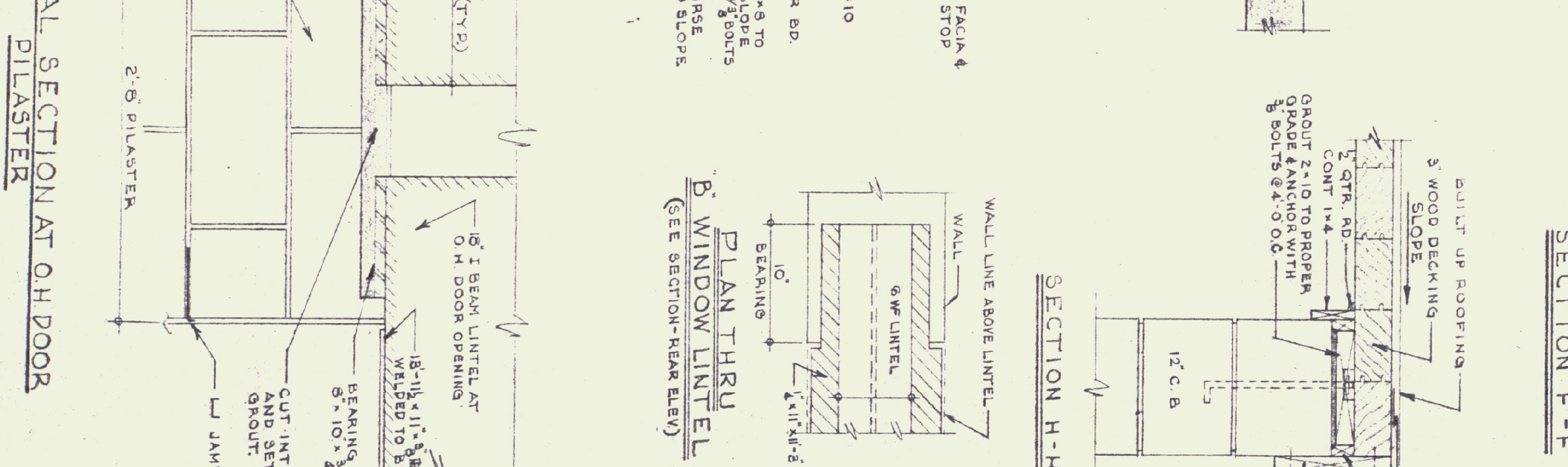
SECTION THRU B EXT WALL
(ABOVE GALLERY)

SECTION H-H

SECTION G-G

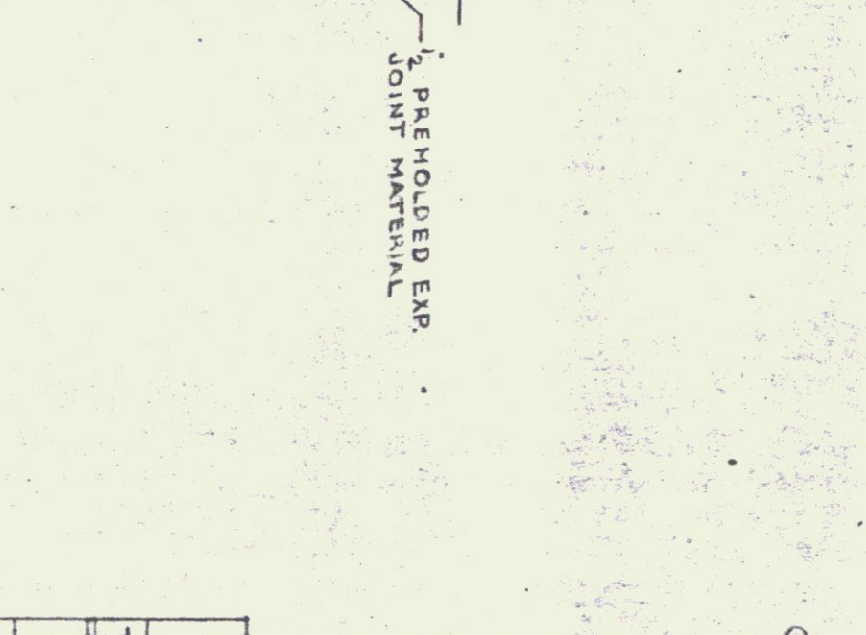


SECTION F-F

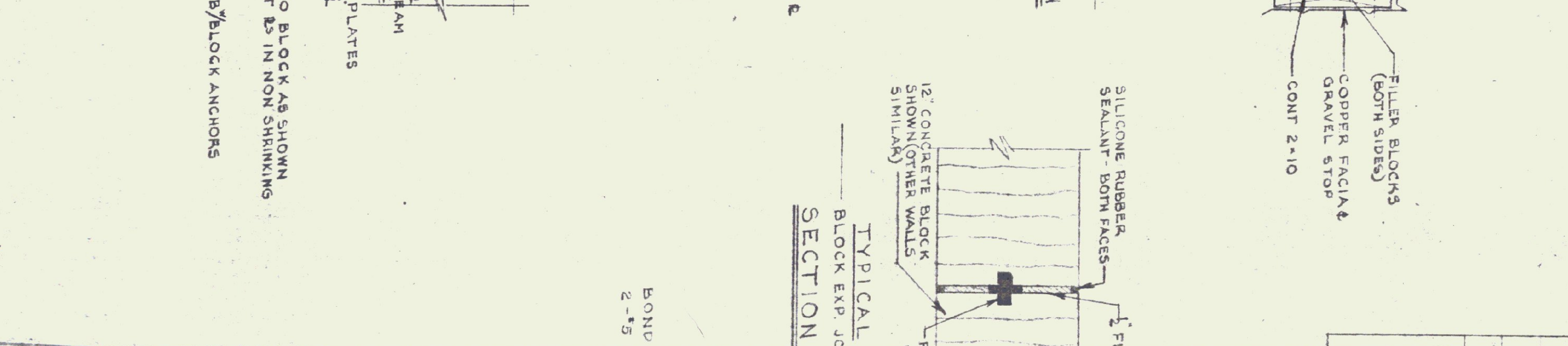


TYPICAL SECTION AT OH DOOR
PILASTER

PLAN THRU B WINDOW LINTEL
(SEE SECTION - REAR ELEV)



SECTION B-B



TYPICAL SECTION B-B - ABOVE DOOR

TYP. INT. DOOR DETAILS

GENERAL NOTES
CAULK ALL JOINTS BETWEEN MASONRY AND DISSIMILAR MATERIALS IN A WORKMAN LIKE MANNER. EL METAL WINDOW FRAMES.
ALL EXTERIOR DOORS SHALL HAVE NON REMOVABLE PIN HINGE ROOF DESIGN (COND: LL 90" OR 84" FT.)

TYPE	SIZE	REMARKS
A	3'-0" x 7'-0" x 1 1/2"	26" x 30" UPPER GLAZED LIGHT (WIRE GLASS)
B	3'-0" x 6'-6" x 1 1/2"	26" x 30" UPPER GLAZED LIGHT (36)
C	3'-0" x 6'-6" x 1 1/2"	12" x 24" BOTTOM LOUVER
D	3'-0" x 6'-6" x 1 1/2"	DUTCH DOOR WITH SHELF
E	3'-0" x 7'-0" x 1 1/2"	HOLLOW METAL w/ PANIC BAR
F	3'-0" x 6'-6" x 1 1/2"	WITHOUT LOUVER
G	3'-0" x 7'-0" x 1 1/2"	B LABEL (BOILER ROOM)

NOTES: - DOORS & FRAMES TO BE HOLLOW METAL ALL GLASS SHALL BE 1" POL. B. GLASS (EXCEPT AS NOTED) FOR FRAME DETAILS SEE BELOW
EXT DOORS TO HAVE ALL IN SADDLES.
DOORS TO BE WEATHERSTRIPPED ALL SIDES.

STATE OF VERMONT
DIVISION OF STATE BUILDINGS
AGENCY OF ADMINISTRATION
MONTPELIER, VERMONT

Standard Highway Garage Building
SELECTED DETAILS

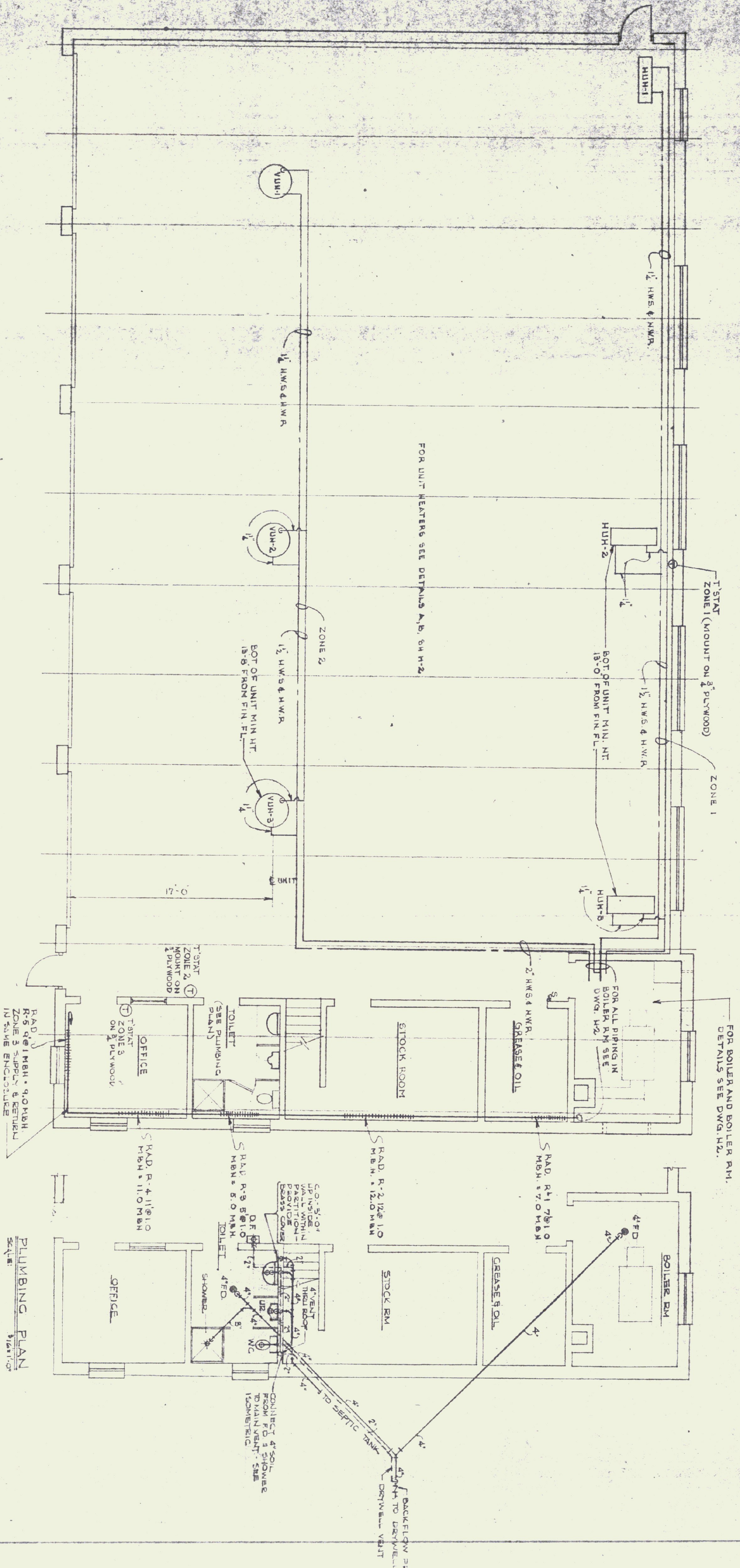
SCALE: 1/2" = 1'-0" OR AS NOTED

DATE: 10-18-71
DRAWN BY: [Signature]
DESIGNED BY: [Signature]
APPROVED BY: [Signature]
STUDIO REFERENCING: [Signature]

REVISIONS:

REVISIONS	DATE	REVISION

EXTERIOR DOOR DETAILS FOR HOLLOW METAL FRAMES

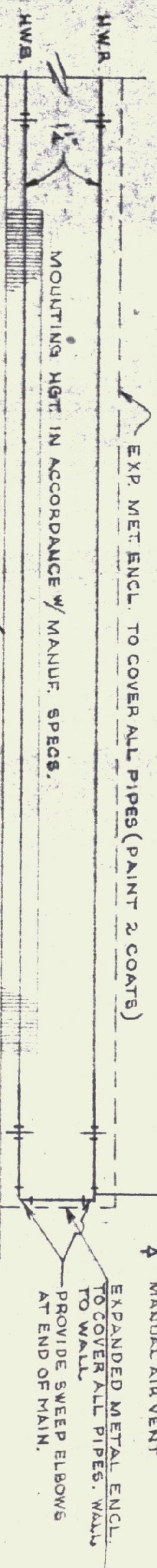


HEATING PLAN
(5 BAY)

SCALE: 1/2" = 1'-0"

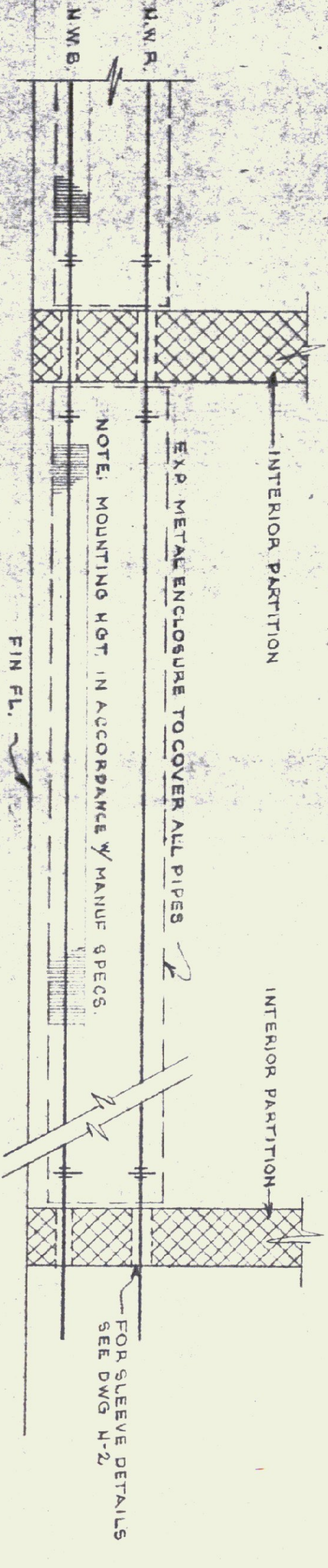
DETAIL OF END OF MAIN (GARAGE OFFICE)

SCALE: 1" = 1'-0"



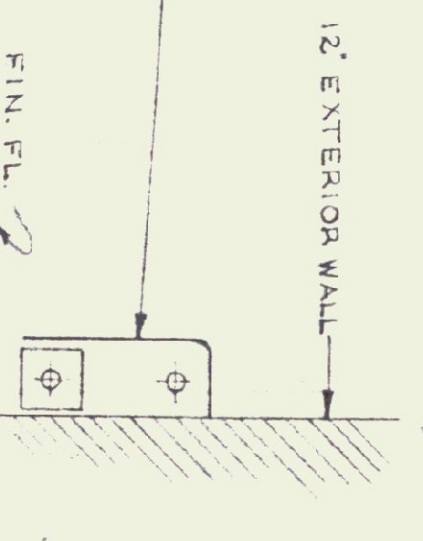
TYPICAL BASEBOARD RADIATION PIPING

SCALE: 1" = 1'-0"



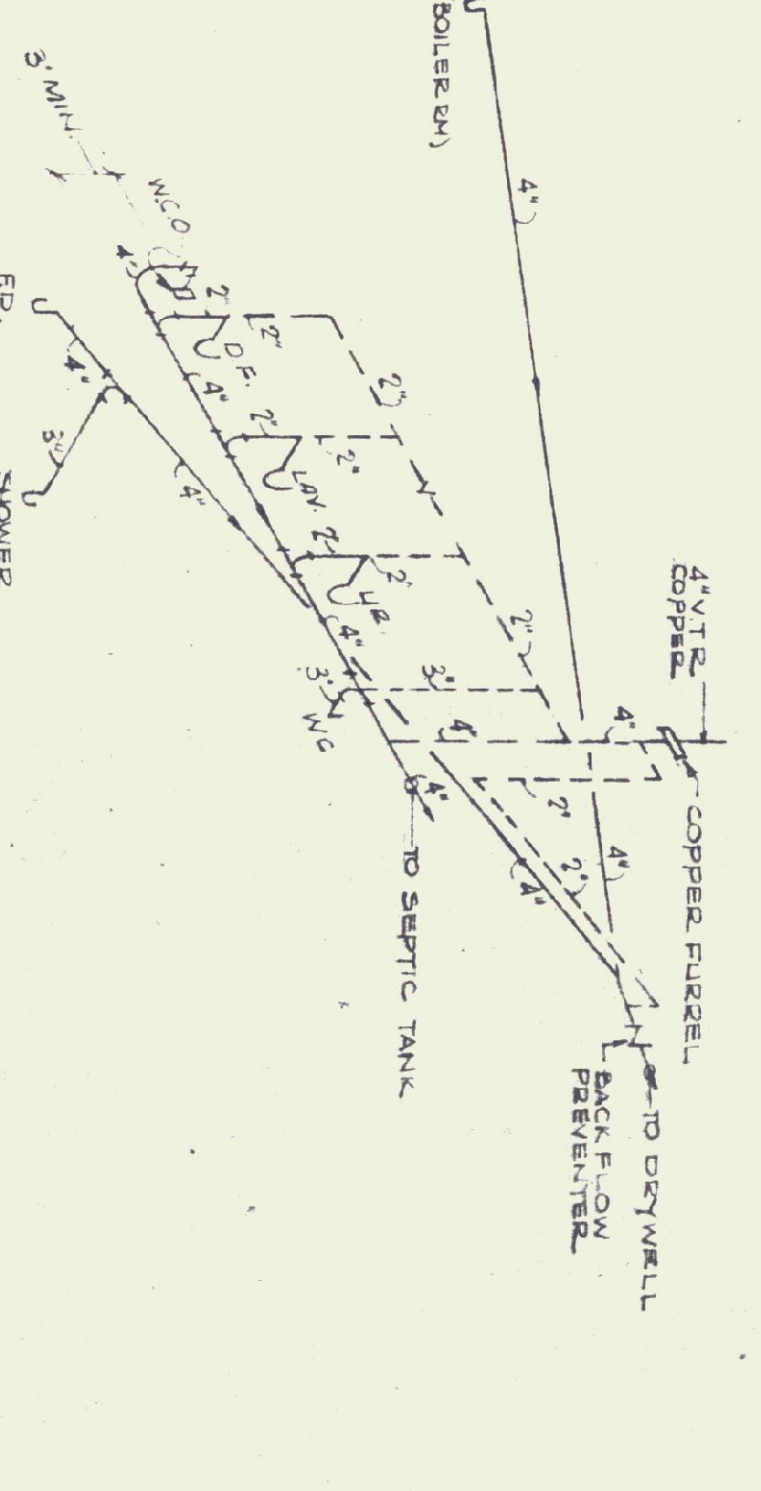
TYPICAL SECTION

SCALE: 1 1/2" = 1'-0"



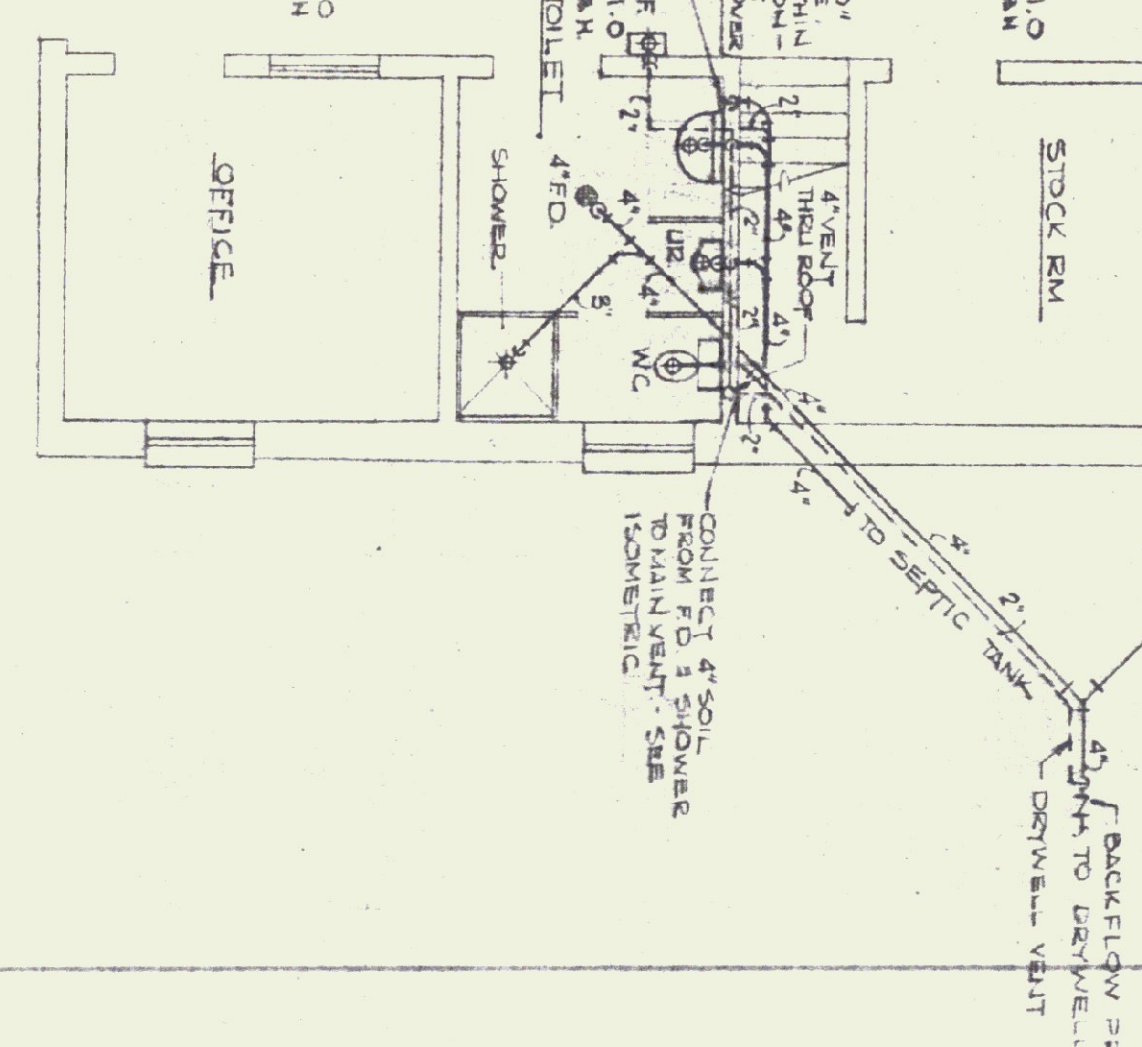
PLUMBING ISOMETRIC DIAGRAM

SCALE: AS SHOWN



PLUMBING PLAN

SCALE: 1/4" = 1'-0"



LEGEND

- H.W.S. ---
- H.W.R. ---
- ⊕ --- BURNER SAFETY SWITCH (TO GAS VALVE)
- ⊕ --- T. STAT.
- PIPE SUPPLY TO BOTTOM & RETURN TO TOP
- GATE VALVE
- CHECK VALVE
- BALANCING COCK
- FLOW CONTROL VALVE
- LEVER VALVE
- STAIRCASE
- PRIV. ALL BRONZE

SEE DRAWING H-2 FOR SCHEDULE & GENERAL NOTES

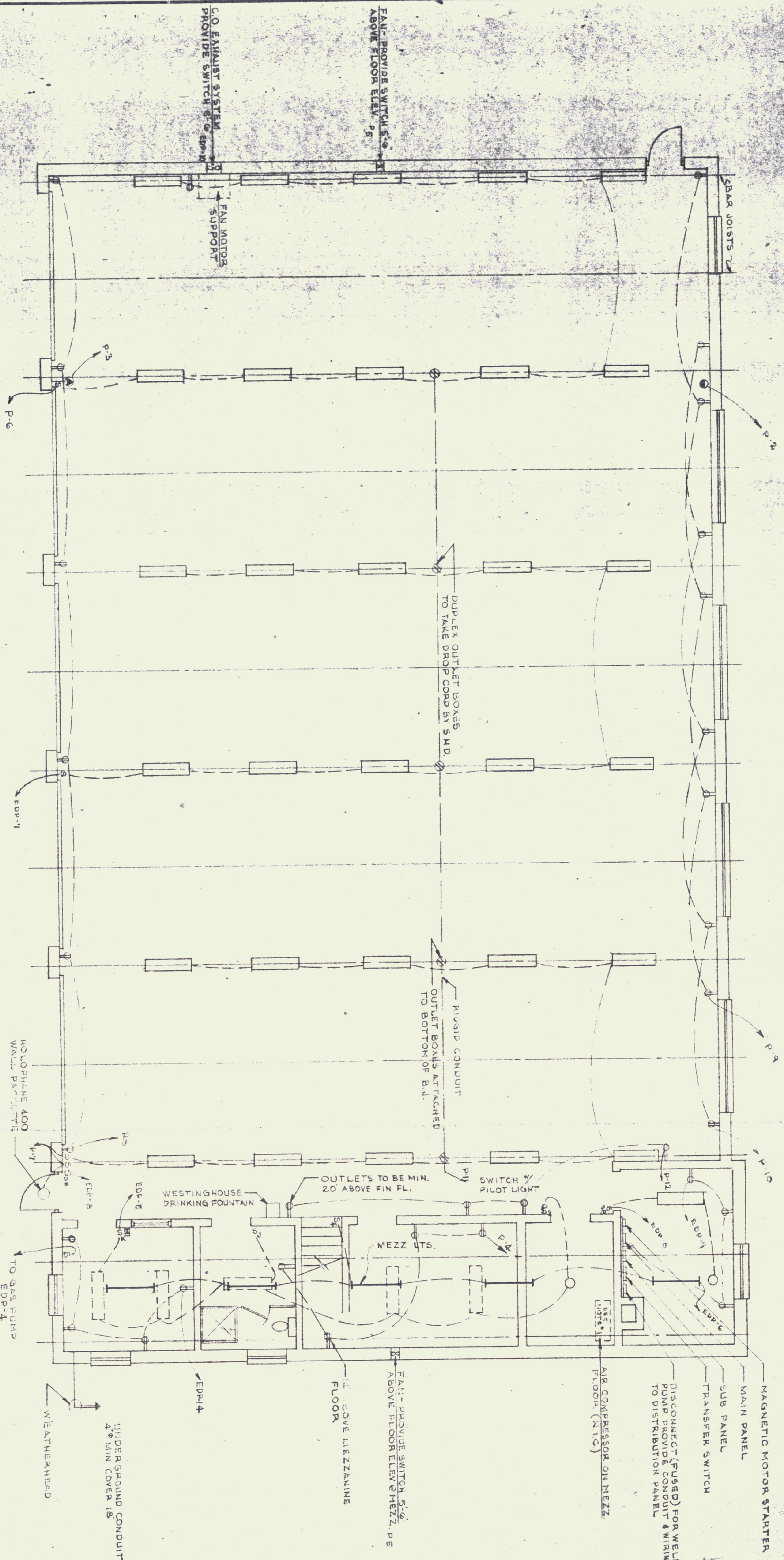
REVISIONS	DATE	REVISION

STATE OF VERMONT
DIVISION OF STATE BUILDINGS
AGENCY OF ADMINISTRATION
MONTPELIER, VERMONT

Standard Five Bay Highway Garage Bldg.
HEATING PLAN

SCALE: AS SHOWN

DATE: 10-18-74	DESIGNED BY: GUY MASTRO	DWG. NO. H-1
DRAWN BY: STUDIO ERMEN	APPROVED BY: [Signature]	1 OF 2



ELECTRICAL PLAN

(5 BAY)

SCALE: 3/16"

POWER PANEL SCHEDULE				EMERGENCY DISTRIBUTION PANEL SCHEDULE			
PANEL CIRC.	CIRCUIT BREAKER TYPE	STYLE	NO. OF CIRCUITS	PANEL CIRC.	CIRCUIT BREAKER TYPE	STYLE	NO. OF CIRCUITS
P-1	100	2	EMERGENCY DIST. PANEL	P-1	40	2	AIR COMPRESSOR
P-2	100	2	WELDING RECEPTACLE	P-2	20	1	BURNER
P-3	100	2	TOILET STOR. RM. RECEPT.	P-3	20	2	WELL PUMP
P-4	20	1	BLOG. EXHAUST	P-4	20	1	GAS PUMP
P-5	20	1	SHOP LIGHTING	P-5	20	1	OFFICE LIGHTING
P-6	20	1	do	P-6	20	1	MEZZ LIGHTING
P-7	20	1	SHOP RECEPTACLES (BAY)	P-7	20	1	SHOP LIGHTING (BAY)
P-8	20	1	SHOP RECEPTACLES (MEZZ)	P-8	20	1	BOILER ROOM LIGHTING
P-9	20	1	SHOP RECEPTACLES (MEZZ)	P-9	20	1	BOILER ROOM RECEPT.
P-10	20	1	do	P-10	20	2	VEHICULAR EXH. FAN
P-11	20	1	MID BAY RECEPT. 1575	P-11	20	1	M.U.H. 1, 2, 3
P-12	20	1	SHOP RECEPT.	P-12	20	1	CIRC. PUMP ZONE 1
P-13	20	1	CIRC. PUMP (ZONE 2)	P-13	20	1	CIRC. PUMP ZONE 3
P-14 to 16	20	1	SPARES	P-14 to 16	20	1	OFFICE RECEPTACLES
P-17 to 19	50	2	SPARES	P-17 to 19	20	1	SPARES
P-20 to 24	20	1	SPARES				

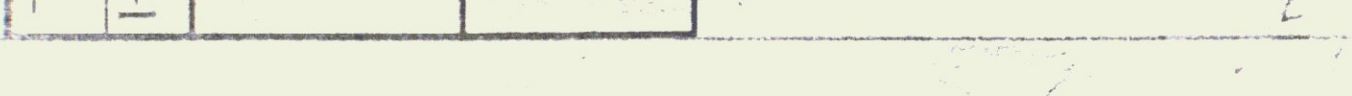
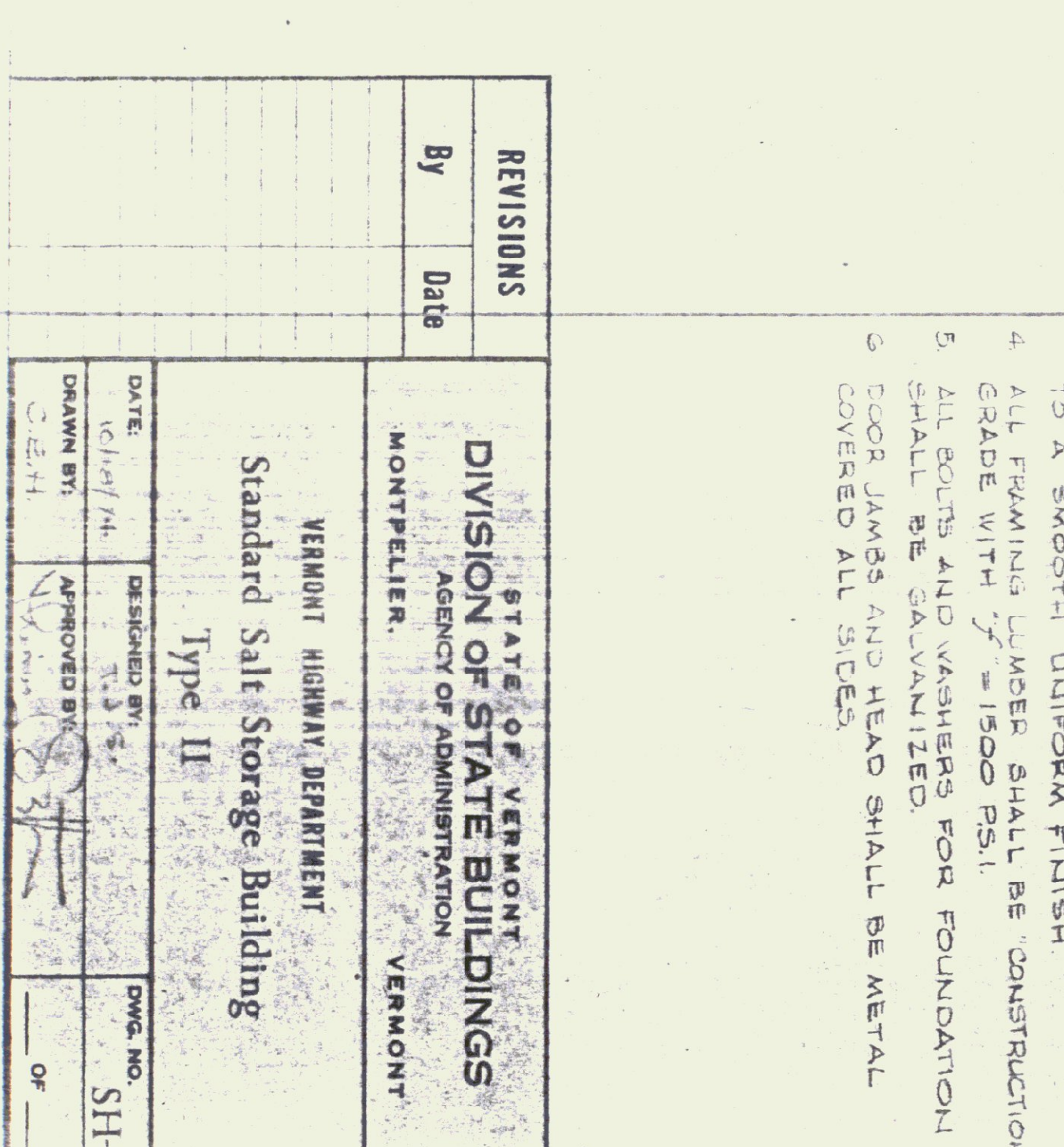
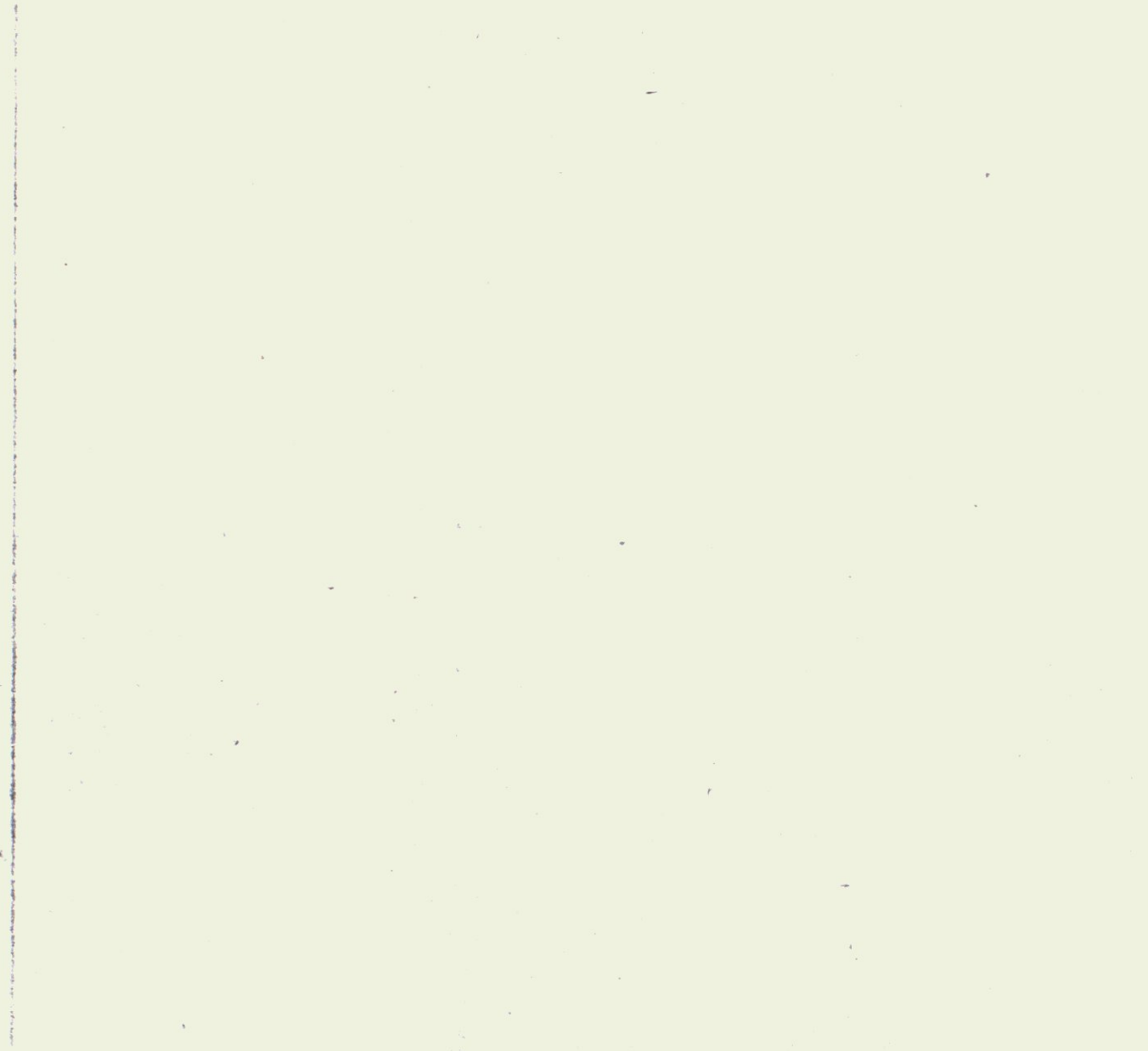
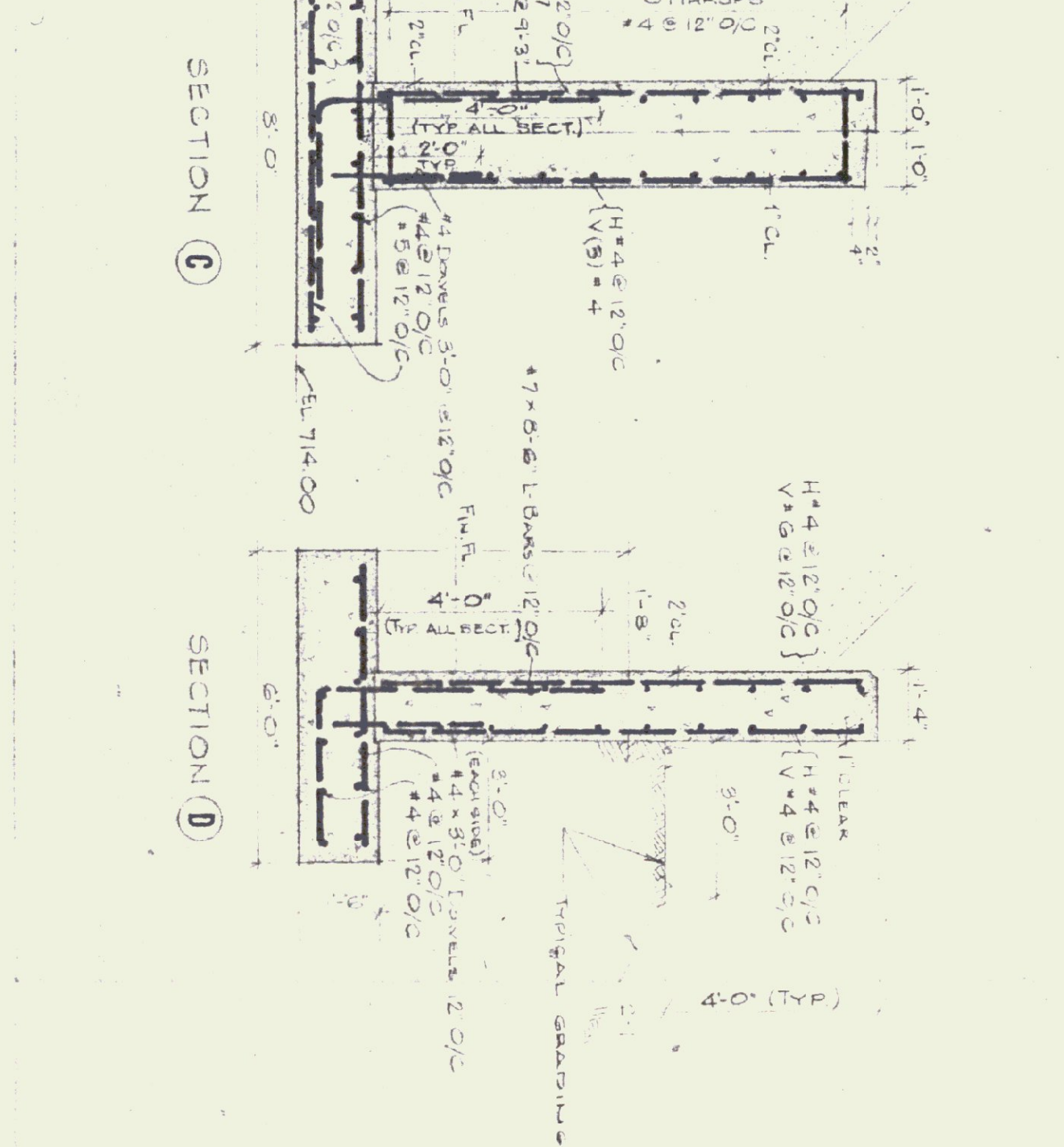
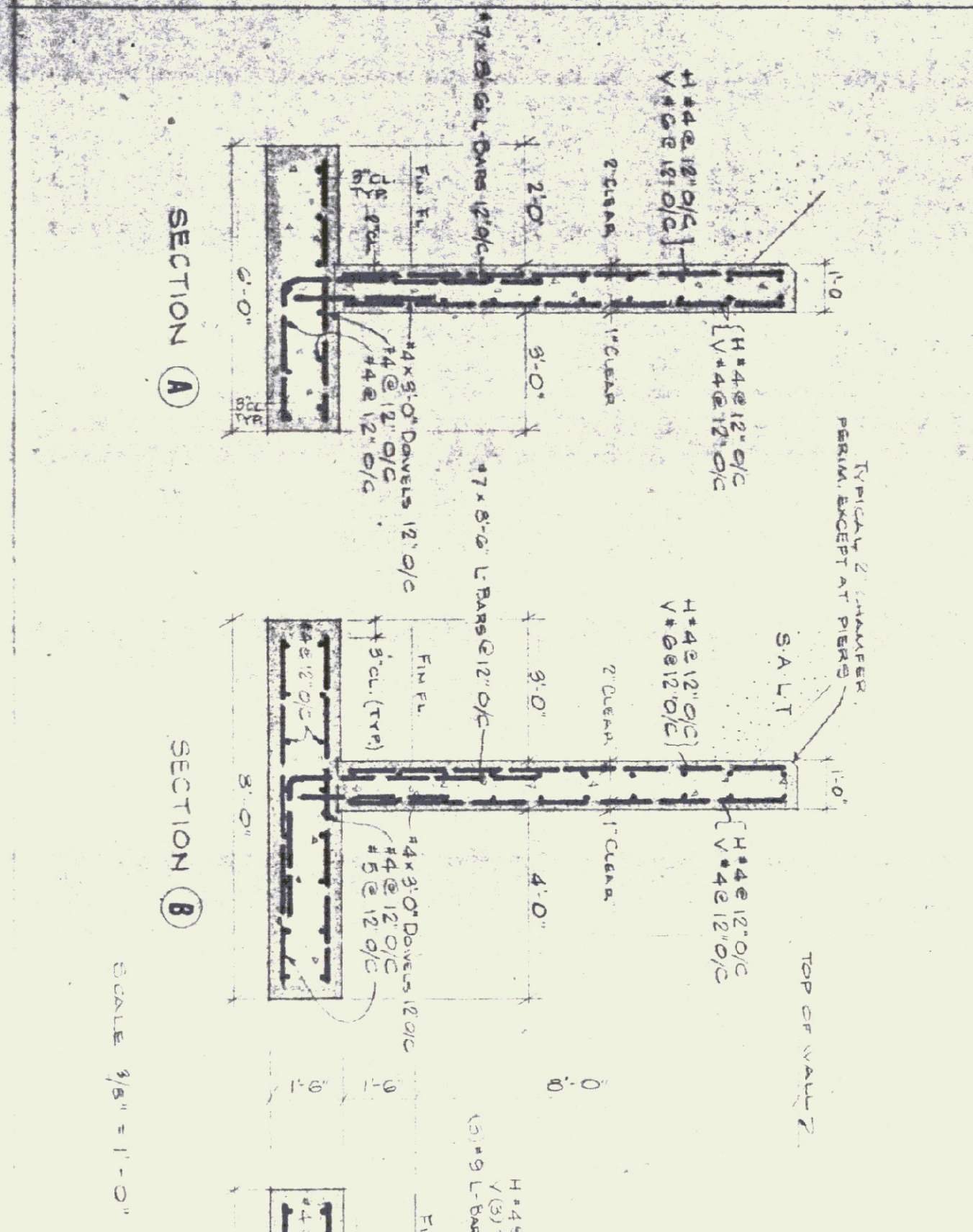
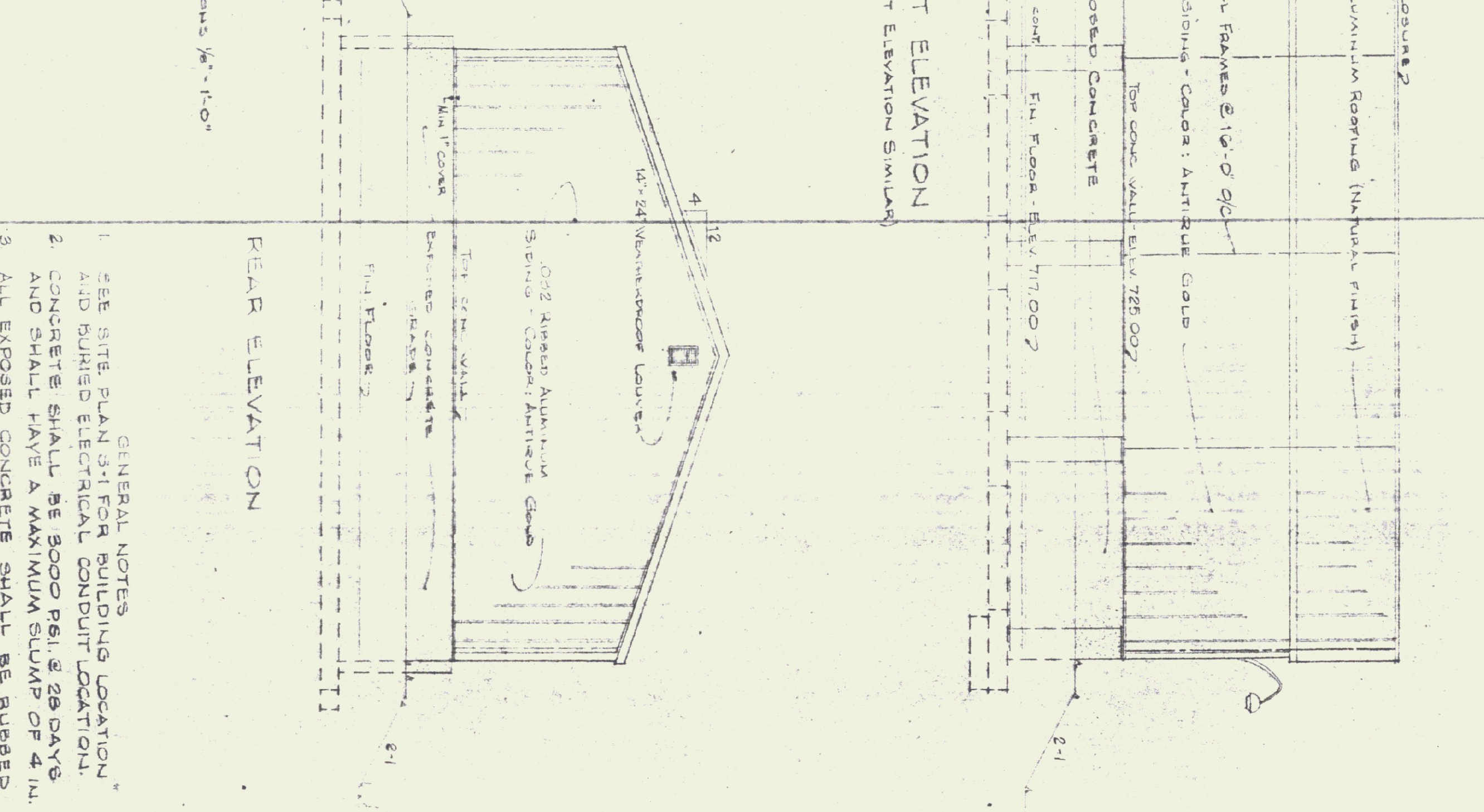
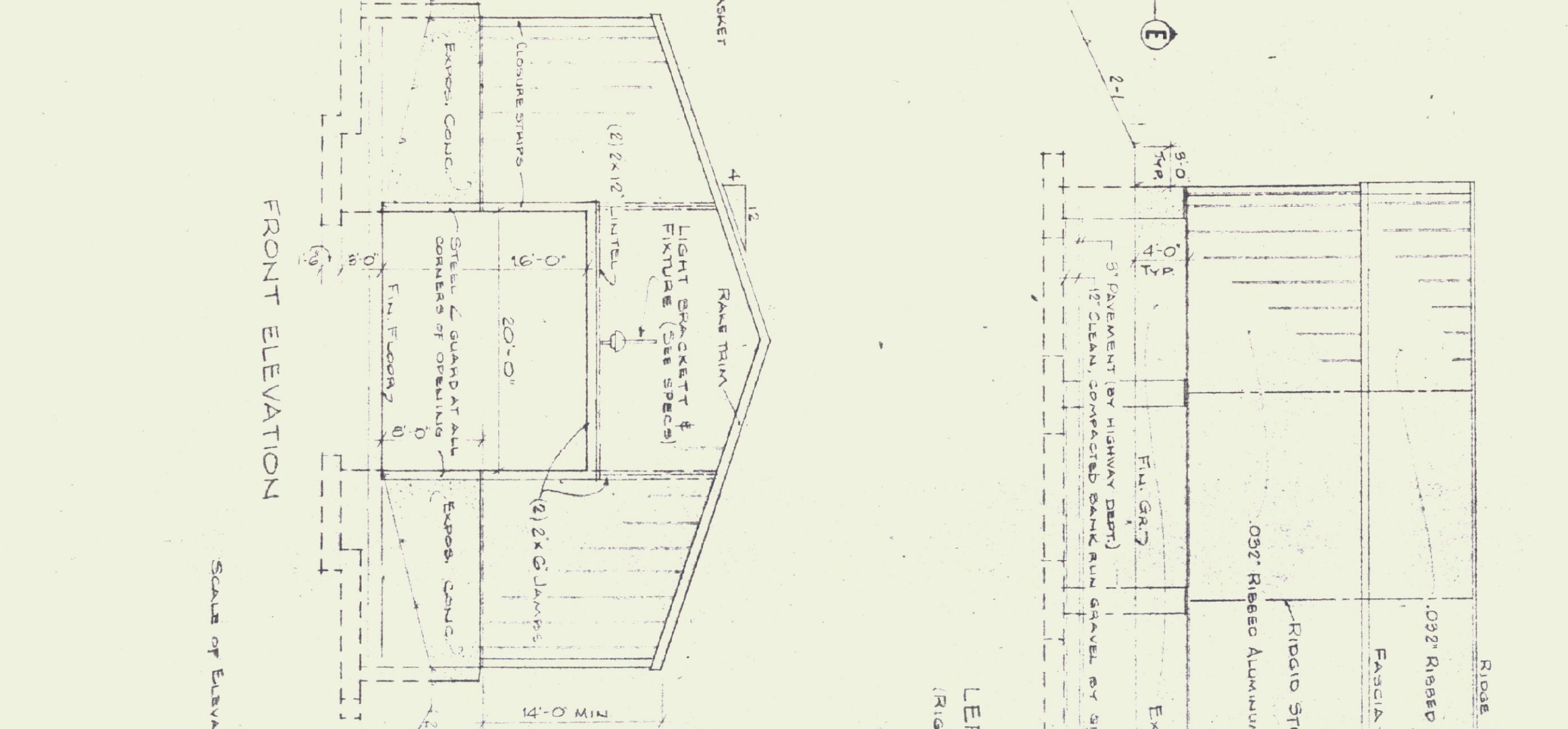
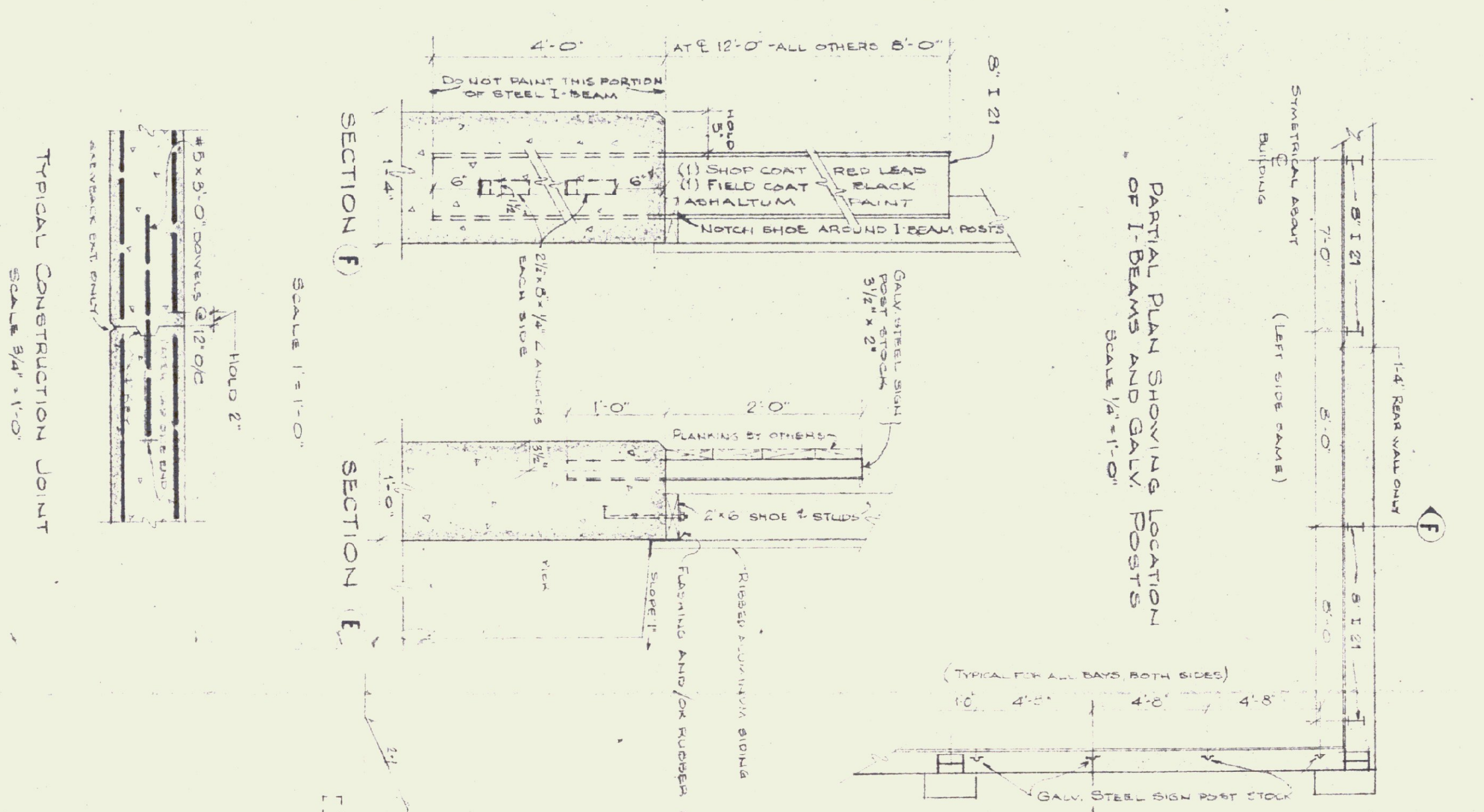
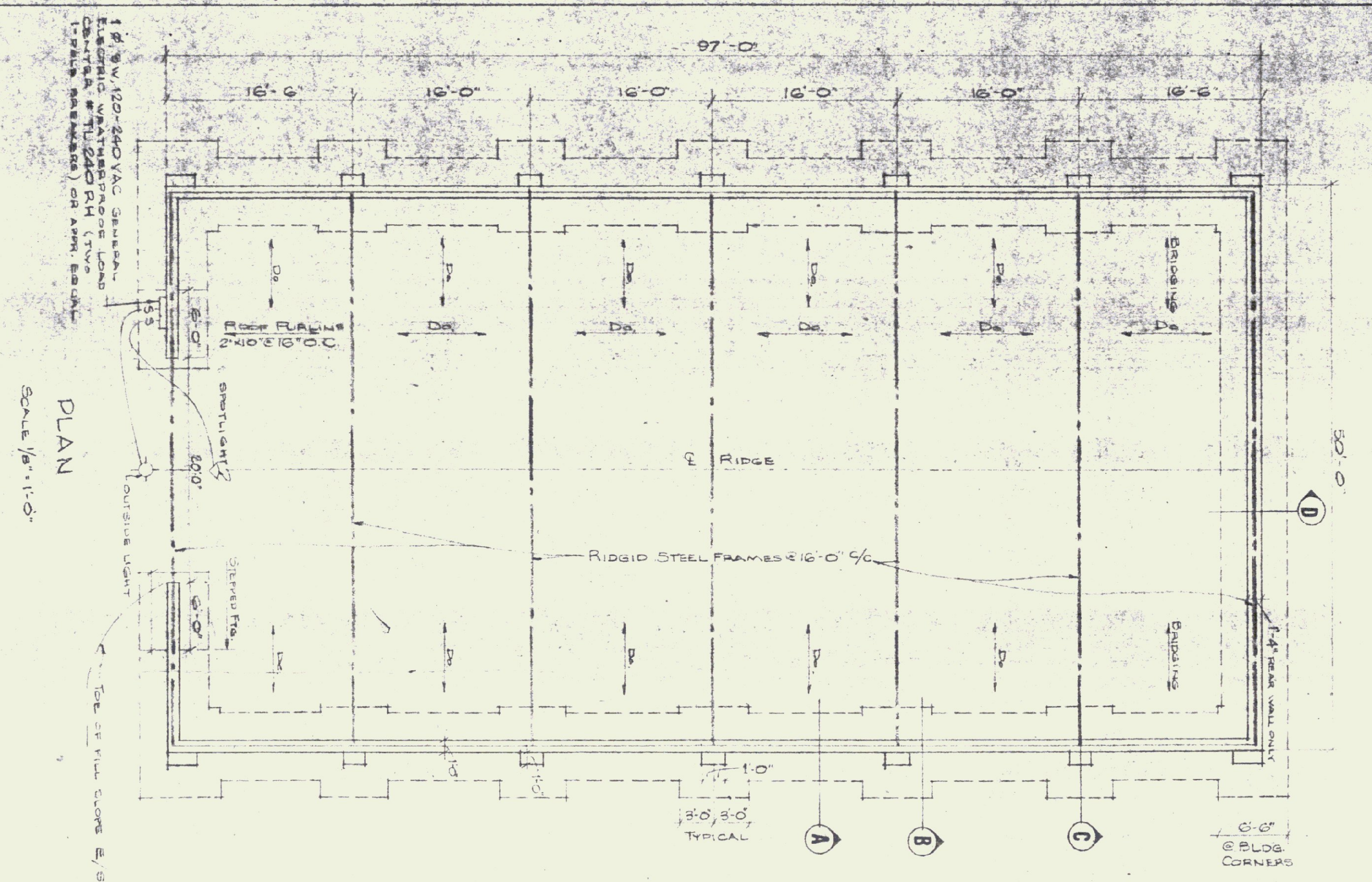
- ### GENERAL NOTES
- SMITHCAST TECH 30-TEG-2-405 (MOUNT ON BOTTOM OF JOISTS)
 - WESTINGHOUSE 1-TUBE RS STRIP 5 STMOR (MOUNT BETWEEN JOISTS)
 - SMITHCAST DOMINAIRE G. DWA 2-40 (SURFACE MOUNT TO CEILING)
 - THEKOSTAT - CONNECT TO CIRCUIT 12 AND TO SUB-PANEL CIRCUIT 4 - MOUNT ON PLYWOOD 5" OFF FLOOR (SEE M-1)
 - 100 AMP WELDER OUTLET
 - ALLOW FOR TELEPHONE SERVICE THRU EXTERIOR WALL COORDINATE WITH LOCAL TELEPHONE CO.
 - ALL WALL OUTLETS OF OFFICE & ROOM SPACES SHALL BE AT LEAST 30" OFF FLOOR (IN BOILER RM. KEEP OUTLETS MIN. 5'-0" ABOVE FL.)
 - 5'6" BURNER SAFETY SWITCH - MOUNT 6'-0" ABOVE FIN. FL.
 - ALL ELECTRICAL CONDUIT FOR SERVICE TOILET TOOL RM. AND MEZZANINE SLAB SHALL BE CONCEALED IN THE CONCRETE
 - ALL WALL RECEPTACLES AND CONDUIT BELOW BOTTOM OF BAR JOISTS SHALL BE CONCEALED.

STATE OF VERMONT
 DIVISION OF STATE BUILDINGS
 AGENCY OF ADMINISTRATION
 MONTPELIER, VERMONT

Standard Five Bay Highway Garage Bldg.
 ELECTRICAL PLAN

SCALE: As noted

DATE	DESIGNED BY	DWG. NO.
10-18-74	C.H.S. MASTRO	E-1
DRAWN BY	APPROVED BY	DATE
ST. JUD. SEIBEL, INC.	[Signature]	



REVISIONS	
By	Date

STATE OF VERMONT
 DIVISION OF STATE BUILDINGS
 AGENCY OF ADMINISTRATION
 MONTPELIER, VERMONT

VERMONT HIGHWAY DEPARTMENT
 Standard Salt Storage Building
 Type II

DATE: Chief/14
 DESIGNED BY: 7.3.72
 DRAWN BY: W. J. ...
 APPROVED BY: [Signature]
 DWG. NO. SH-1
 OF

- GENERAL NOTES
- SEE SITE PLAN 3-1 FOR BUILDING LOCATION AND BURIED ELECTRICAL CONDUIT LOCATION.
 - CONCRETE SHALL BE 3000 PSI, 28 DAYS AND SHALL HAVE A MAXIMUM SLUMP OF 4 IN.
 - ALL EXPOSED CONCRETE SHALL BE RUBBED TO A SMOOTH UNIFORM FINISH.
 - ALL FRAMING LUMBER SHALL BE CONSTRUCTION GRADE WITH 7/8" = 1500 PSI.
 - ALL BOLTS AND WASHERS FOR FOUNDATION SHALL BE GALVANIZED.
 - DOOR JAMBS AND HEAD SHALL BE METAL COVERED ALL SIDES.