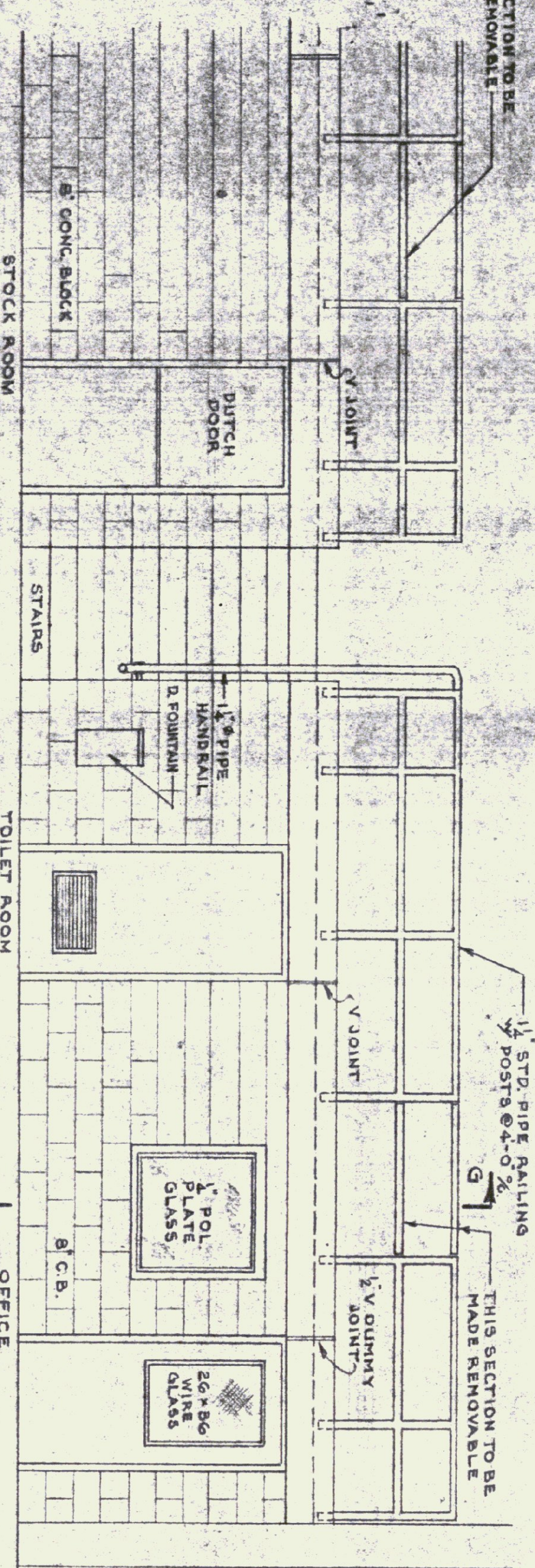
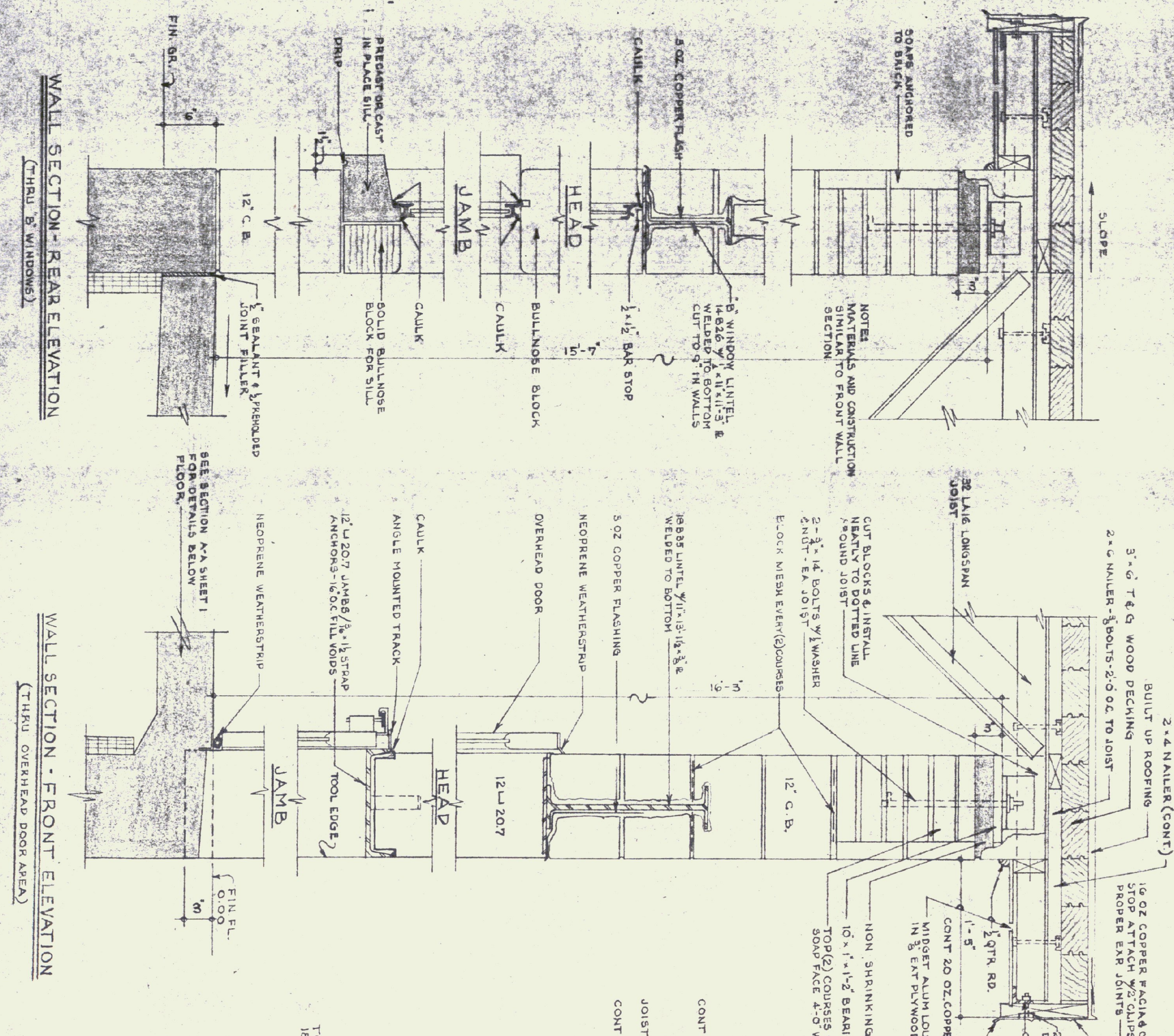


THIS SECTION TO BE MADE REMOVABLE

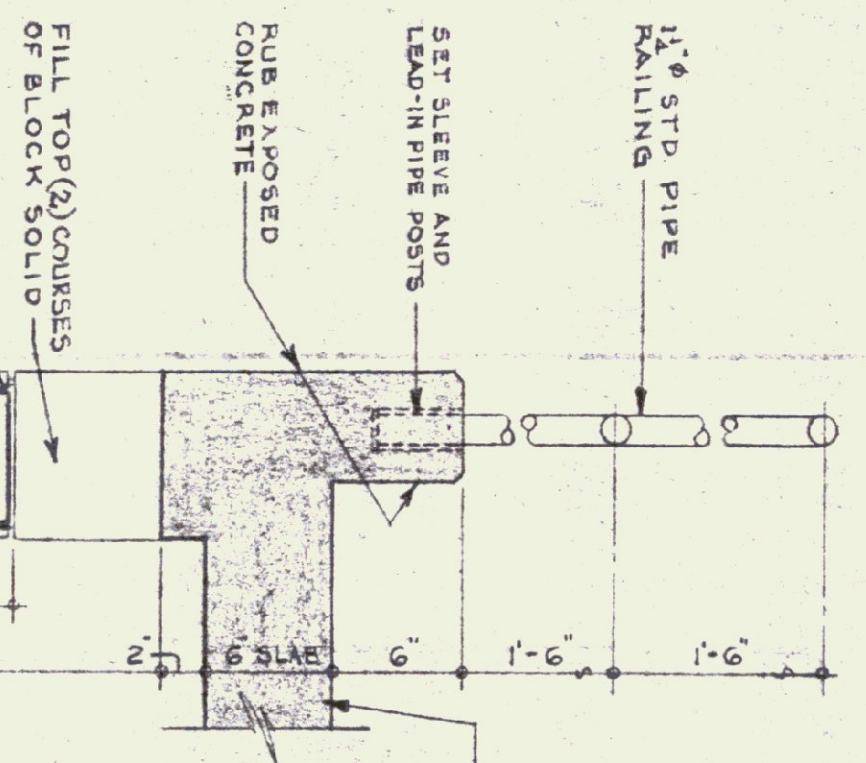


PARTIAL ELEVATION LOOKING TOWARDS GALLERY  
DO NOT SCALE

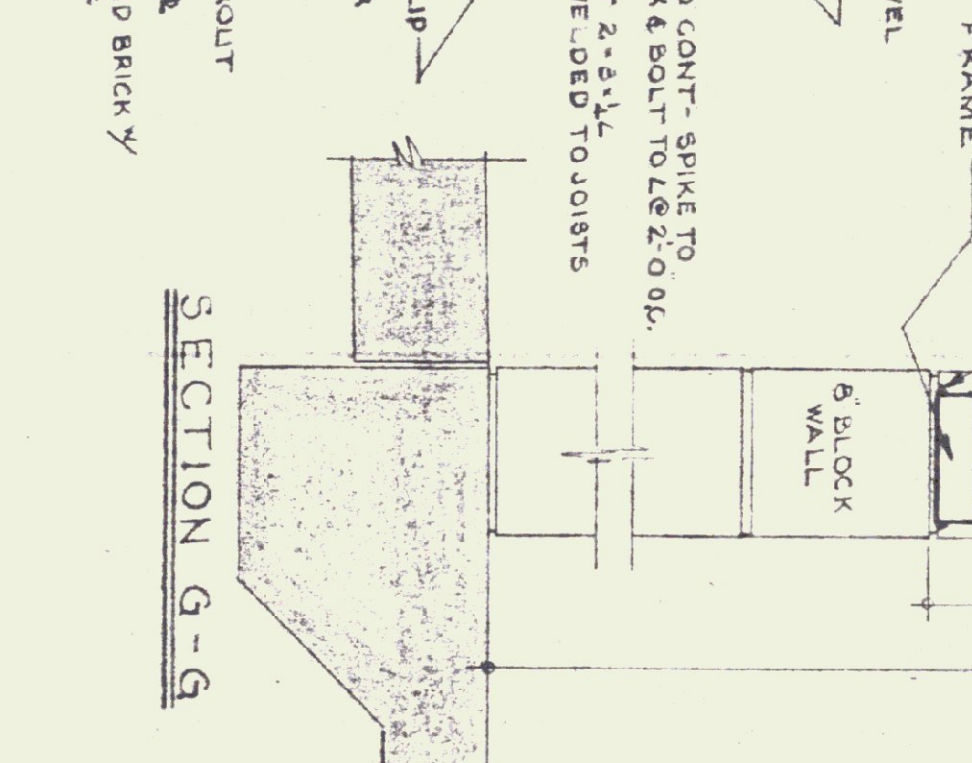


WALL SECTION - REAR ELEVATION  
(THRU B WINDOWS)

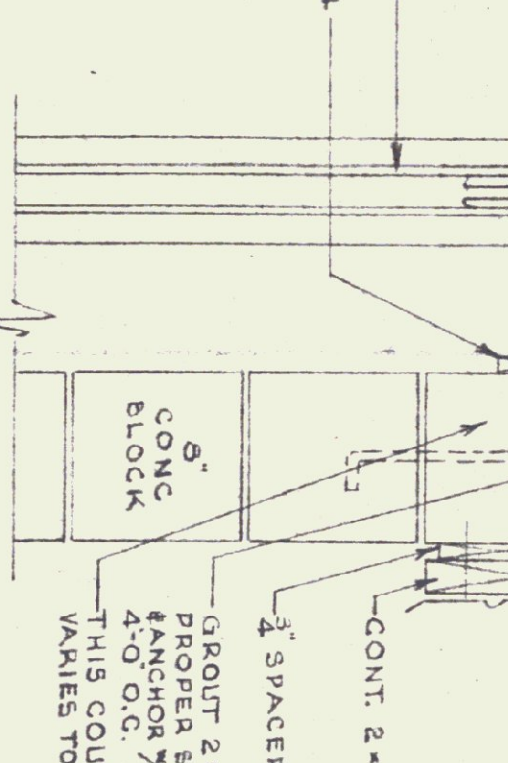
WALL SECTION - FRONT ELEVATION  
(THRU OVERHEAD DOOR AREA)



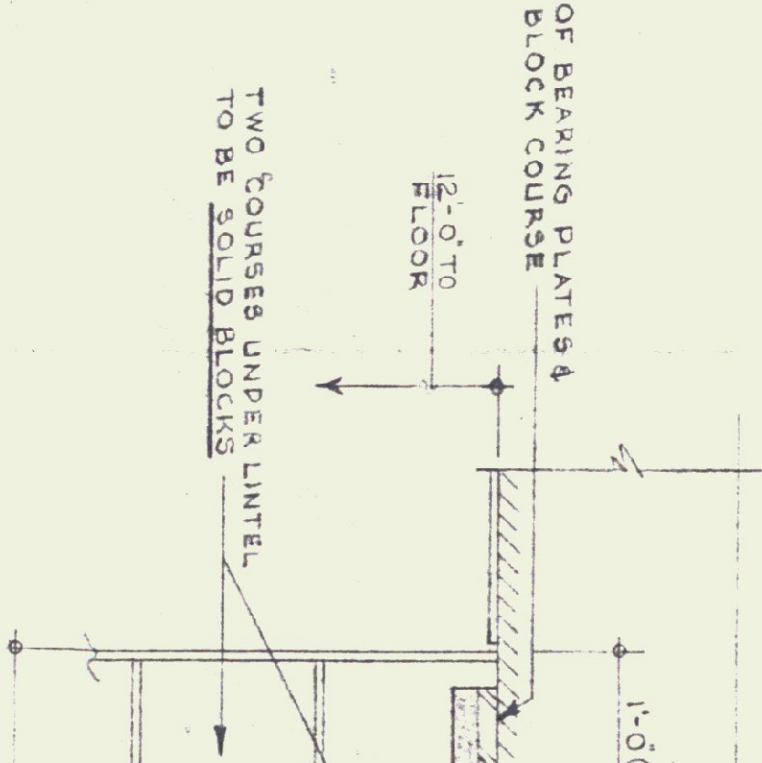
SECTION G-G



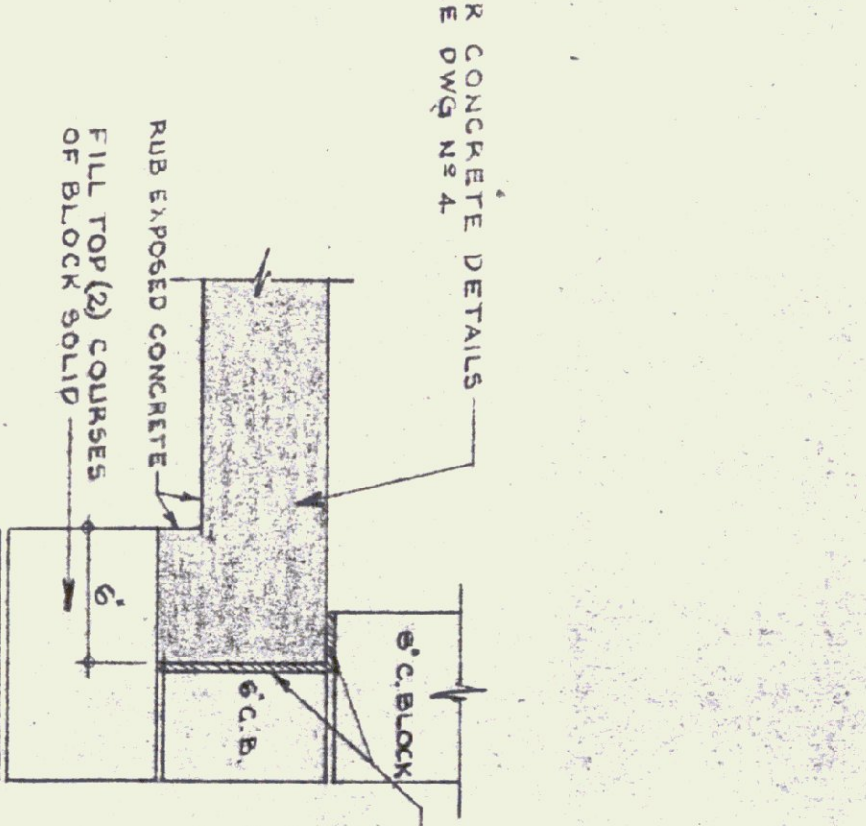
SECTION H-H



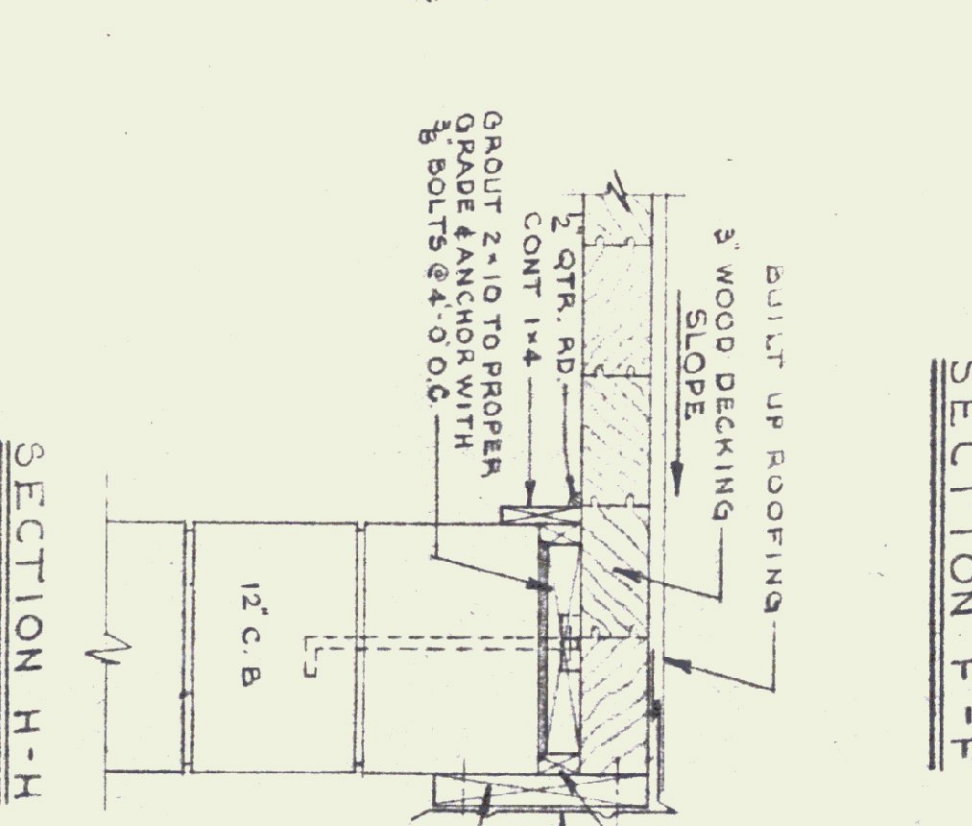
SECTION THRU B EXT WALL  
(ABOVE GALLERY)



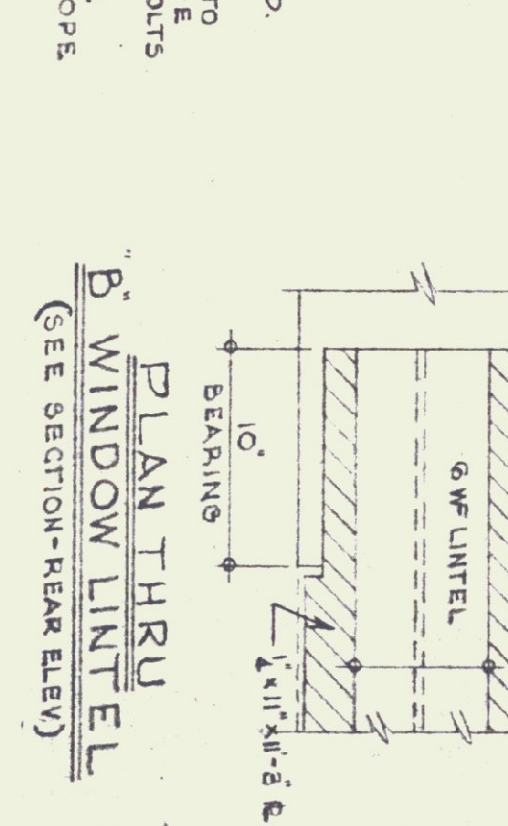
TYPICAL SECTION AT OH DOOR  
PLASTER



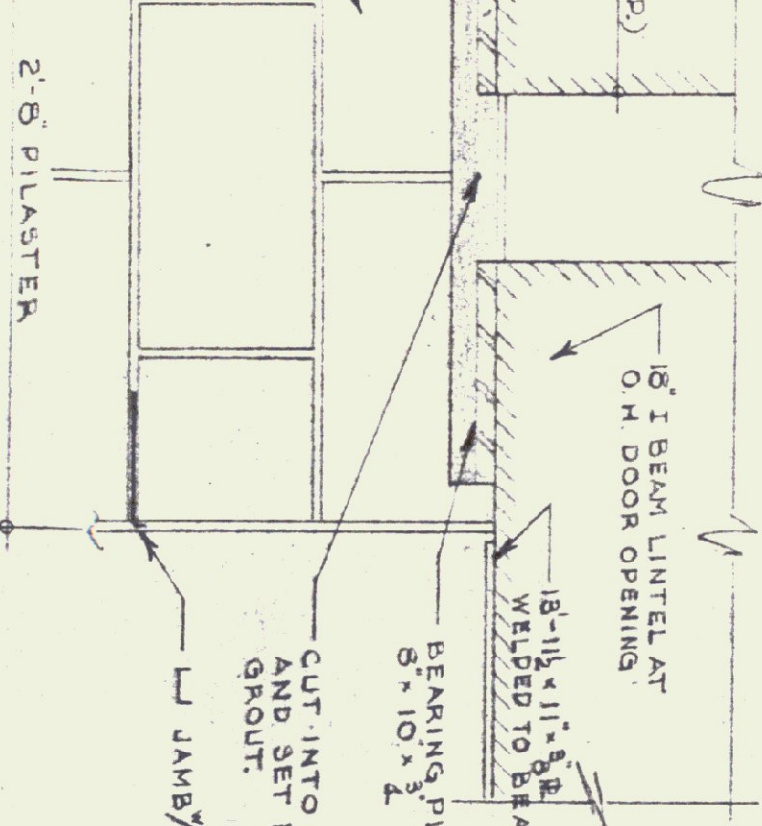
SECTION F-F



SECTION G-G



SECTION THRU B WINDOW LINTEL  
(SEE SECTION - REAR ELEV)

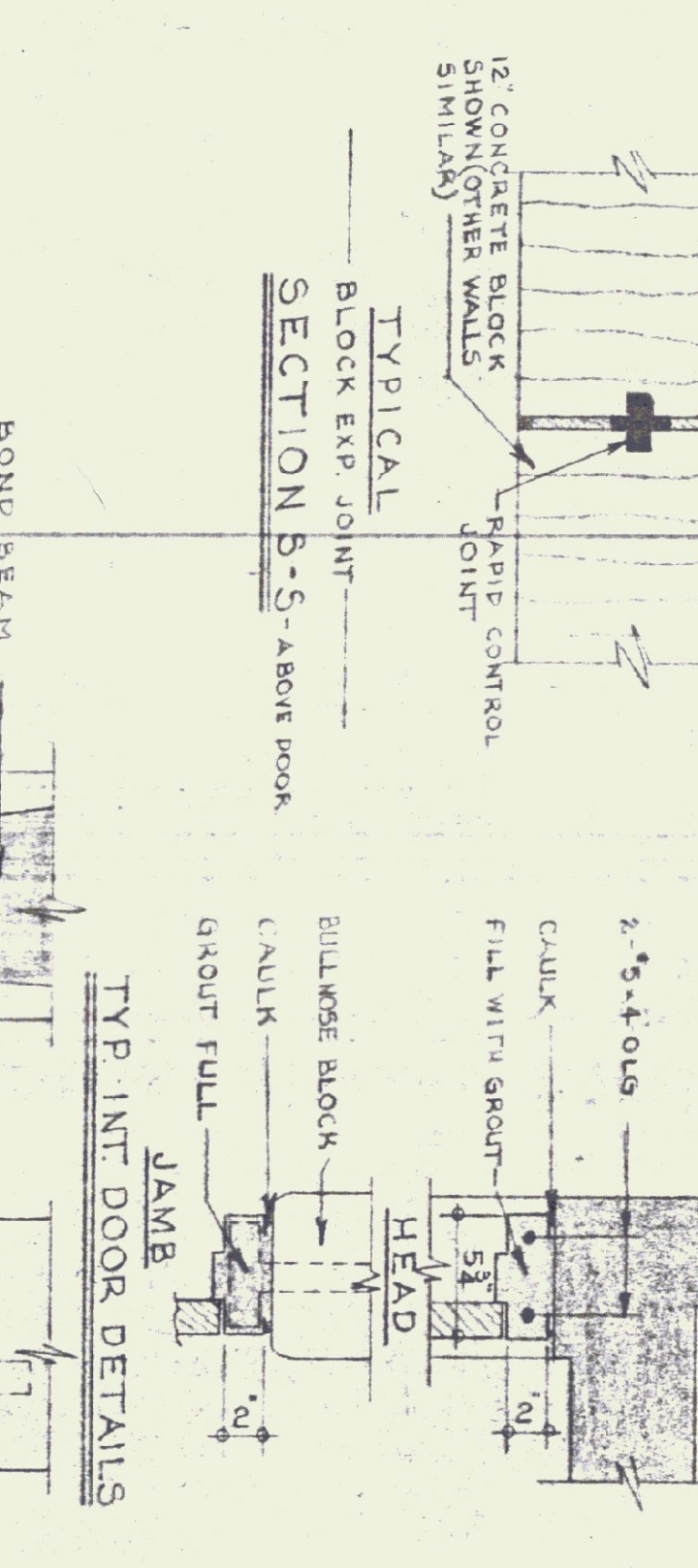


SECTION THRU B WINDOW LINTEL  
(SEE SECTION - REAR ELEV)

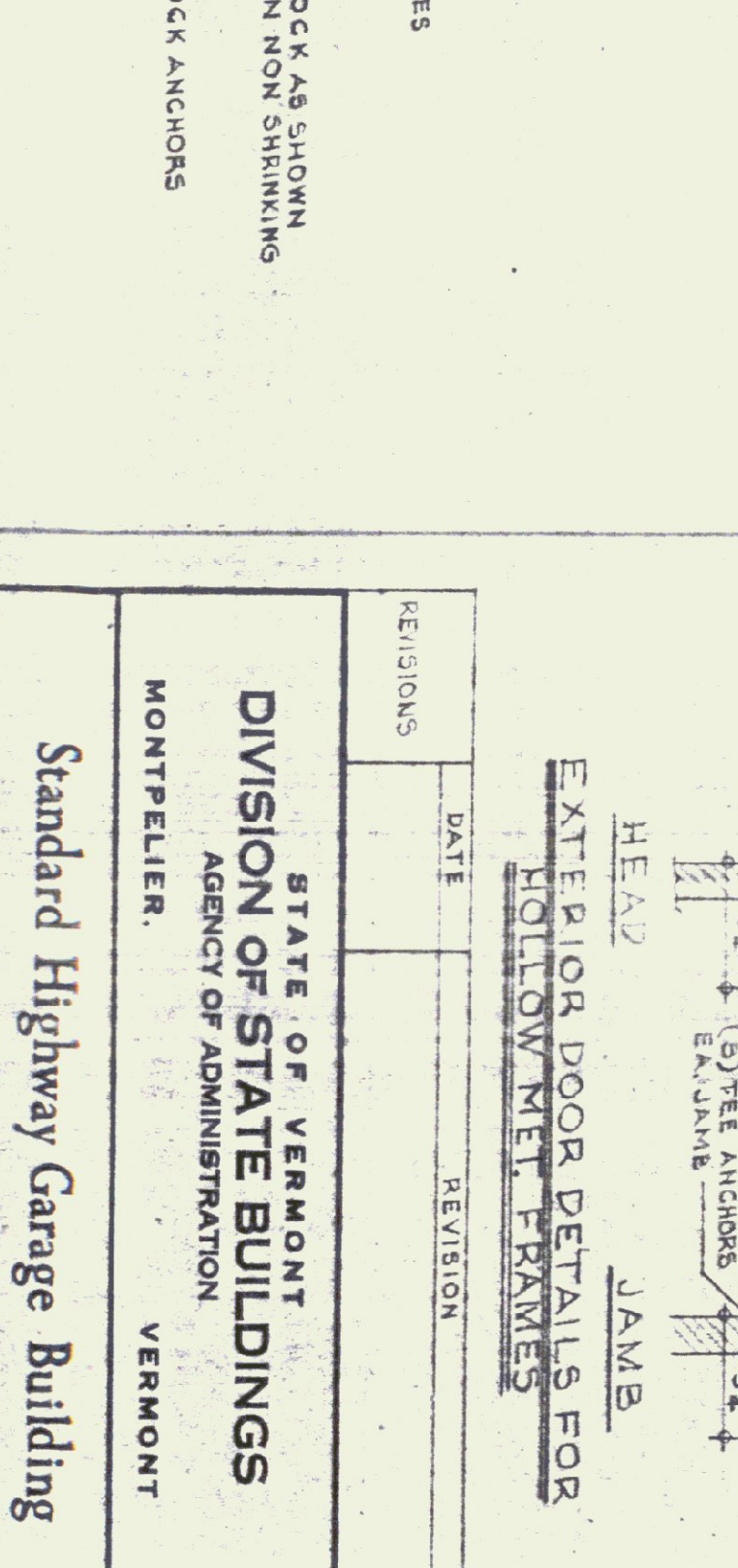
GENERAL NOTES  
CAULK ALL JOINTS BETWEEN MASONRY AND DISSIMILAR MATERIALS IN A WORKMAN LIKE MANNER. EXCEPT WINDOW FRAMES.  
ALL EXTERIOR DOORS SHALL HAVE NON REMOVABLE PIN HINGERS.  
KNOB DESIGN COND: LL 907 89 FT.

TYPE	SIZE	REMARKS
A	3'-0" x 7'-0" x 1 1/2"	26 x 30" UPPER GLAZED LIGHT (WIRE GLASS)
B	3'-0" x 6'-6" x 1 1/2"	26 x 30" UPPER GLAZED LIGHT (36)
C	3'-0" x 6'-6" x 1 1/2"	12" x 24" BOTTOM LOUVER
D	3'-0" x 6'-6" x 1 1/2"	DUTCH DOOR WITH SHELF
E	3'-0" x 7'-0" x 1 1/2"	HOLLOW METAL W/ PANIC BAR
F	3'-0" x 6'-6" x 1 1/2"	WITHOUT LOUVER
G	3'-0" x 7'-0" x 1 1/2"	B LABEL (BOILER ROOM)

NOTES: - DOORS & FRAMES TO BE HOLLOW METAL ALL GLASS SHALL BE 1/2" POL. B. GLASS (EXCEPT AS NOTED) FOR FRAME DETAILS SEE BELOW  
EXT DOORS TO HAVE ALL IN SADDLES.  
DOORS TO BE WEATHERSTRIPPED ALL SIDES.



TYPICAL SECTION B-5 - ABOVE DOOR



TYP. INT. DOOR DETAILS

STATE OF VERMONT  
DIVISION OF STATE BUILDINGS  
AGENCY OF ADMINISTRATION  
MONTPELIER, VERMONT

Standard Highway Garage Building  
SELECTED DETAILS

SCALE: 1/2" = 1'-0" OR AS NOTED

DATE: 10-18-71  
DRAWN BY: STUDIO DESIGNING  
DESIGNED BY:  
APPROVED BY:  
DWG. NO. A3

REVISIONS:

REVISIONS	DATE	REVISION

EXTERIOR DOOR DETAILS FOR HOLLOW METAL FRAMES