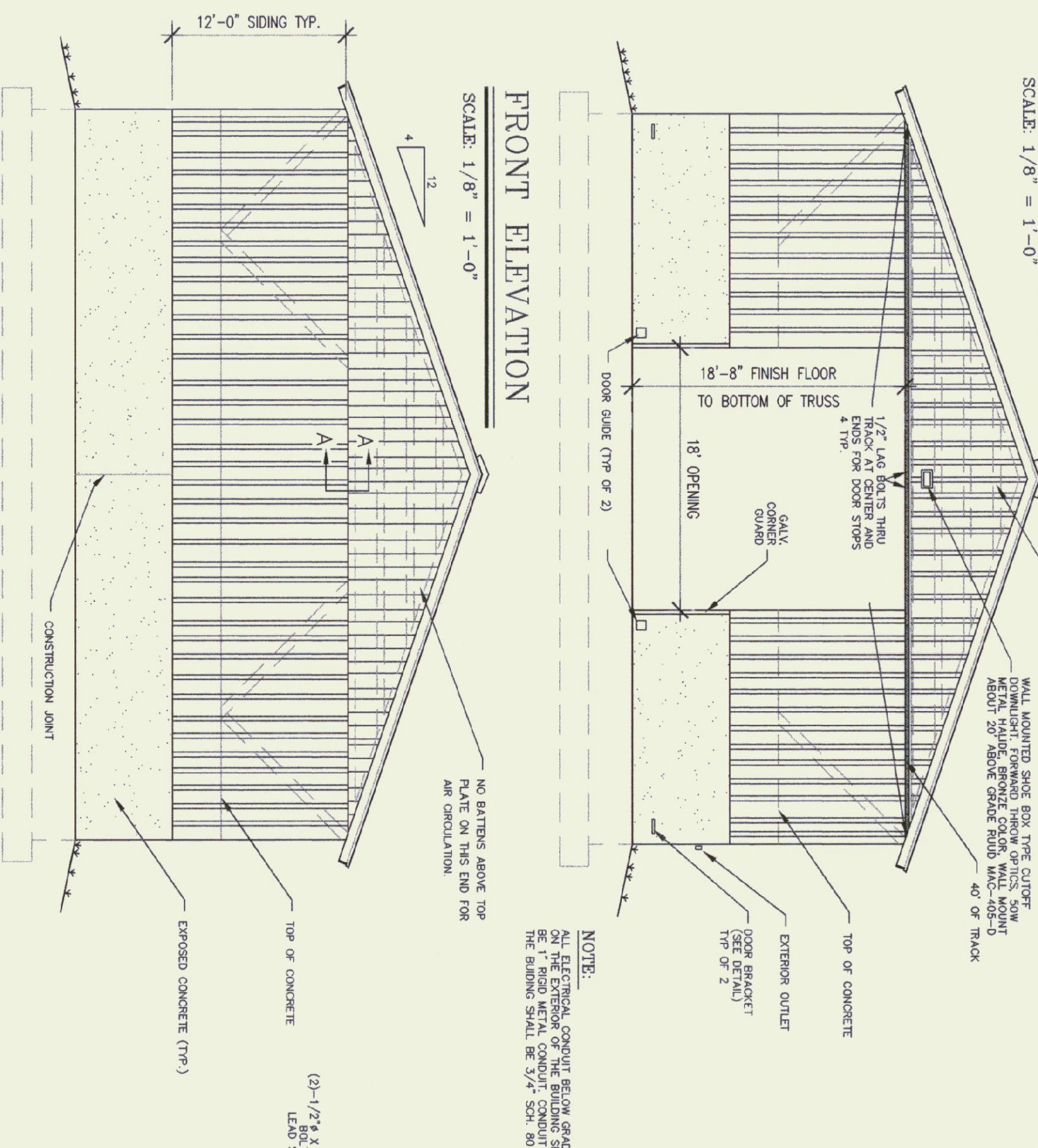
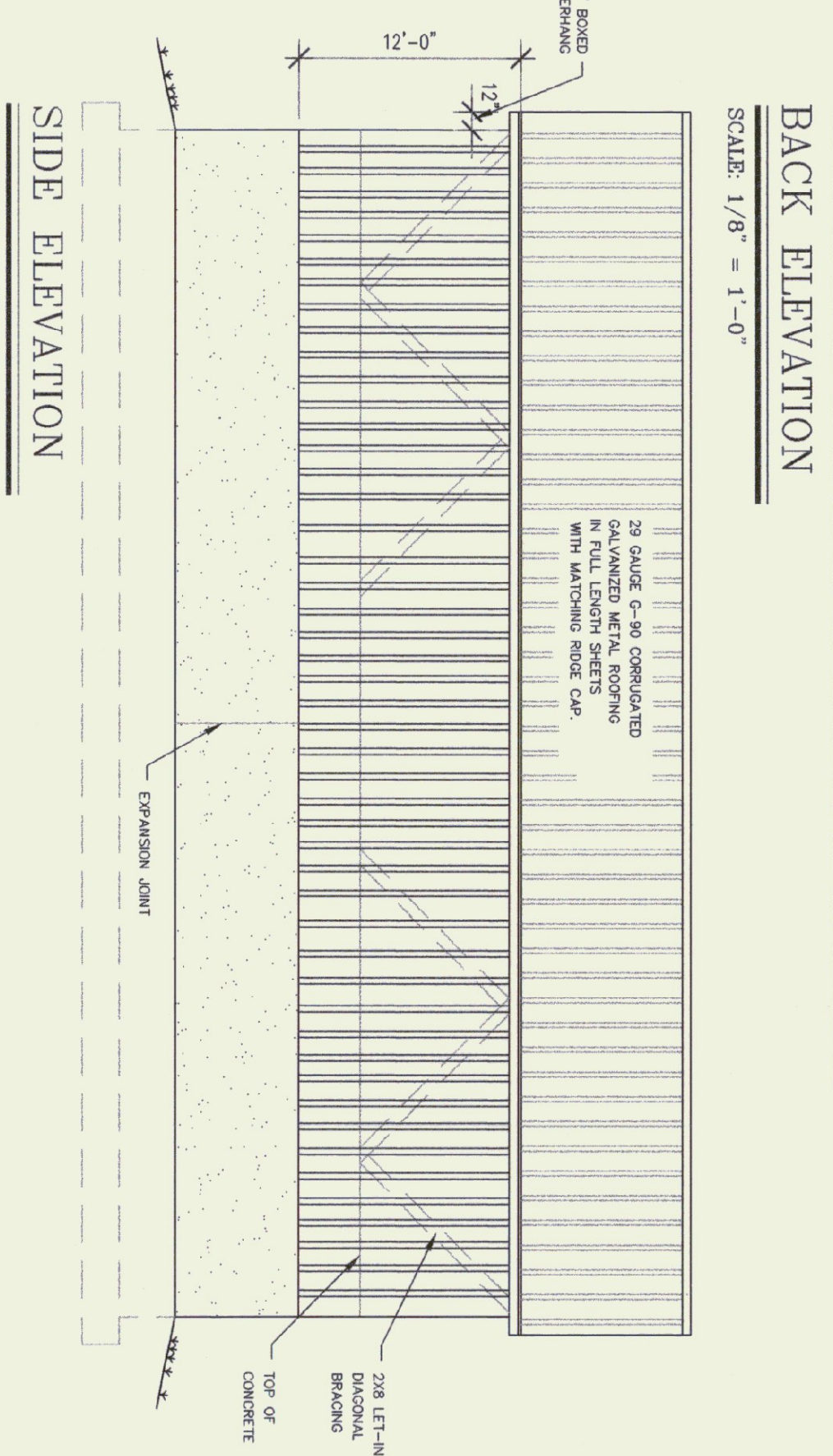


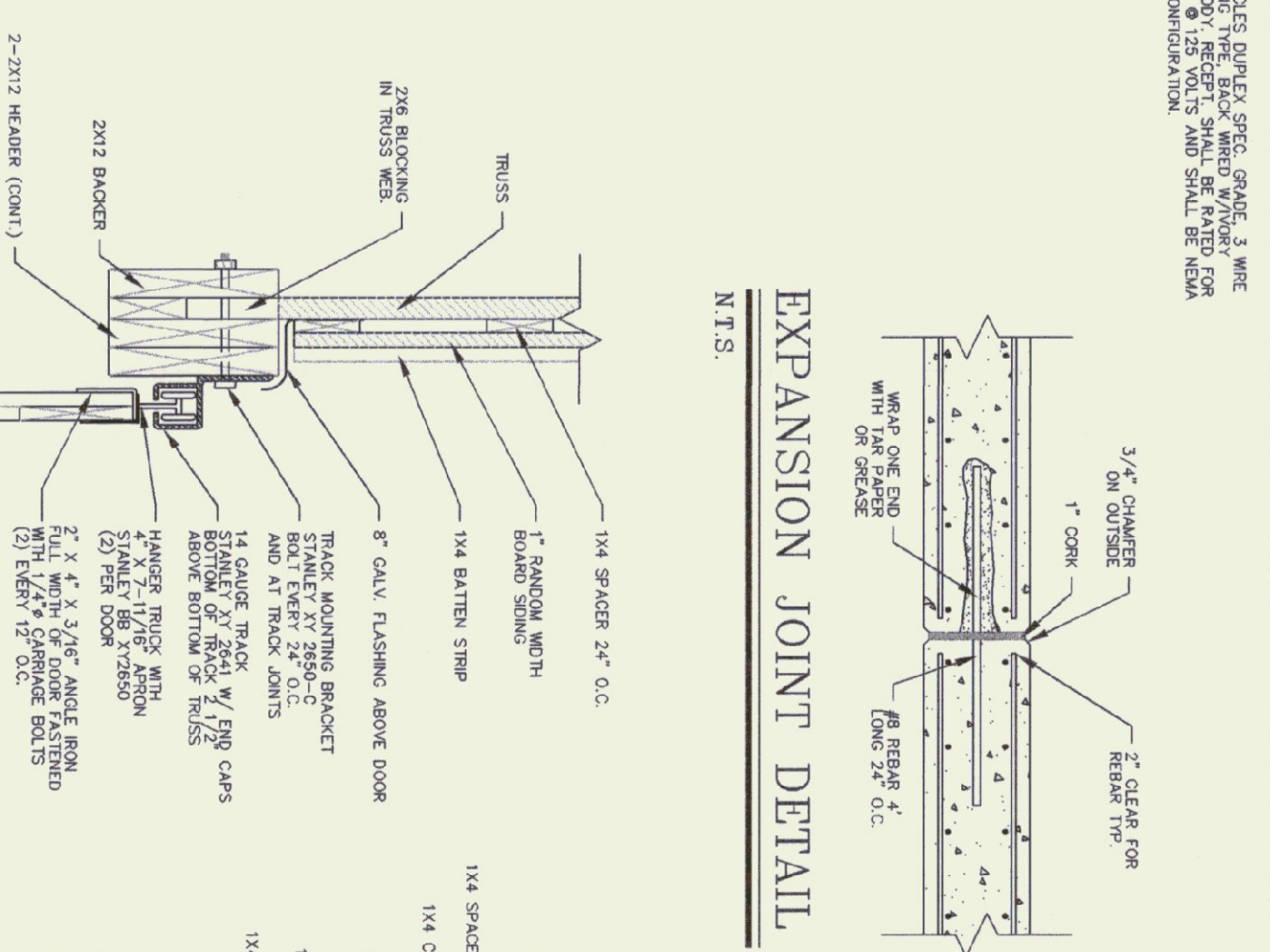
FOUNDATION PLAN
SCALE: 1/8" = 1'-0"



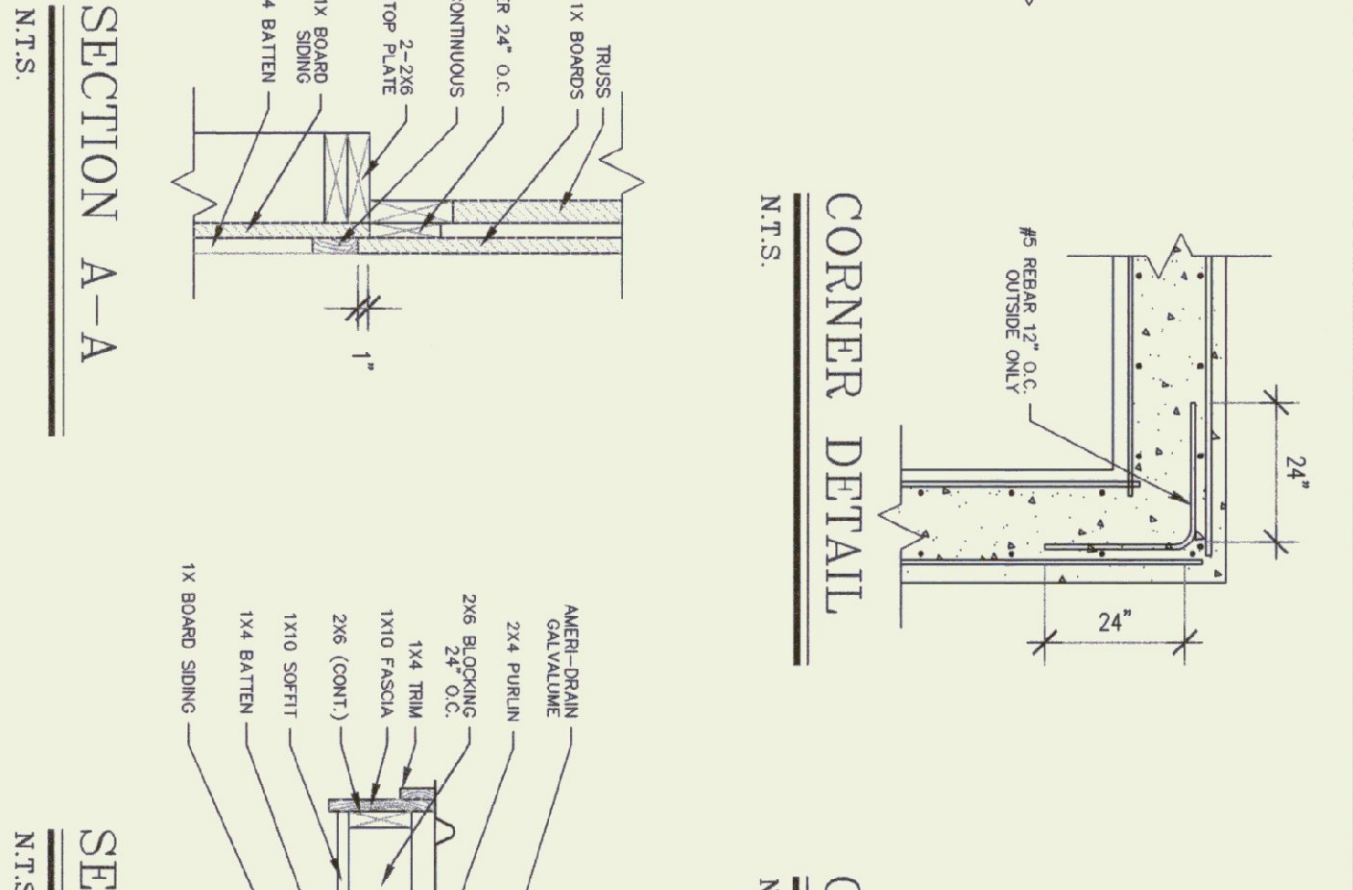
FRONT ELEVATION
SCALE: 1/8" = 1'-0"



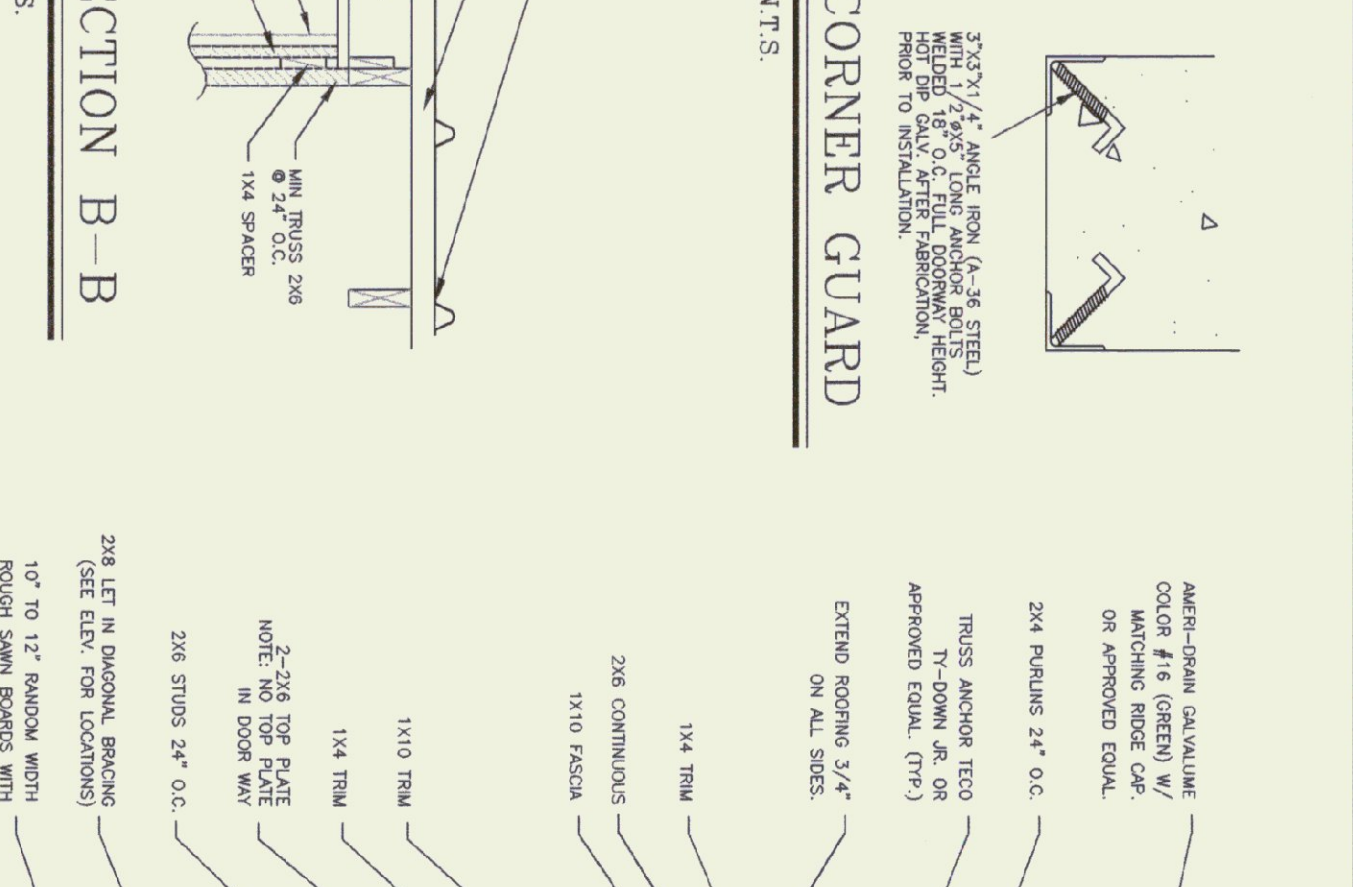
BACK ELEVATION
SCALE: 1/8" = 1'-0"



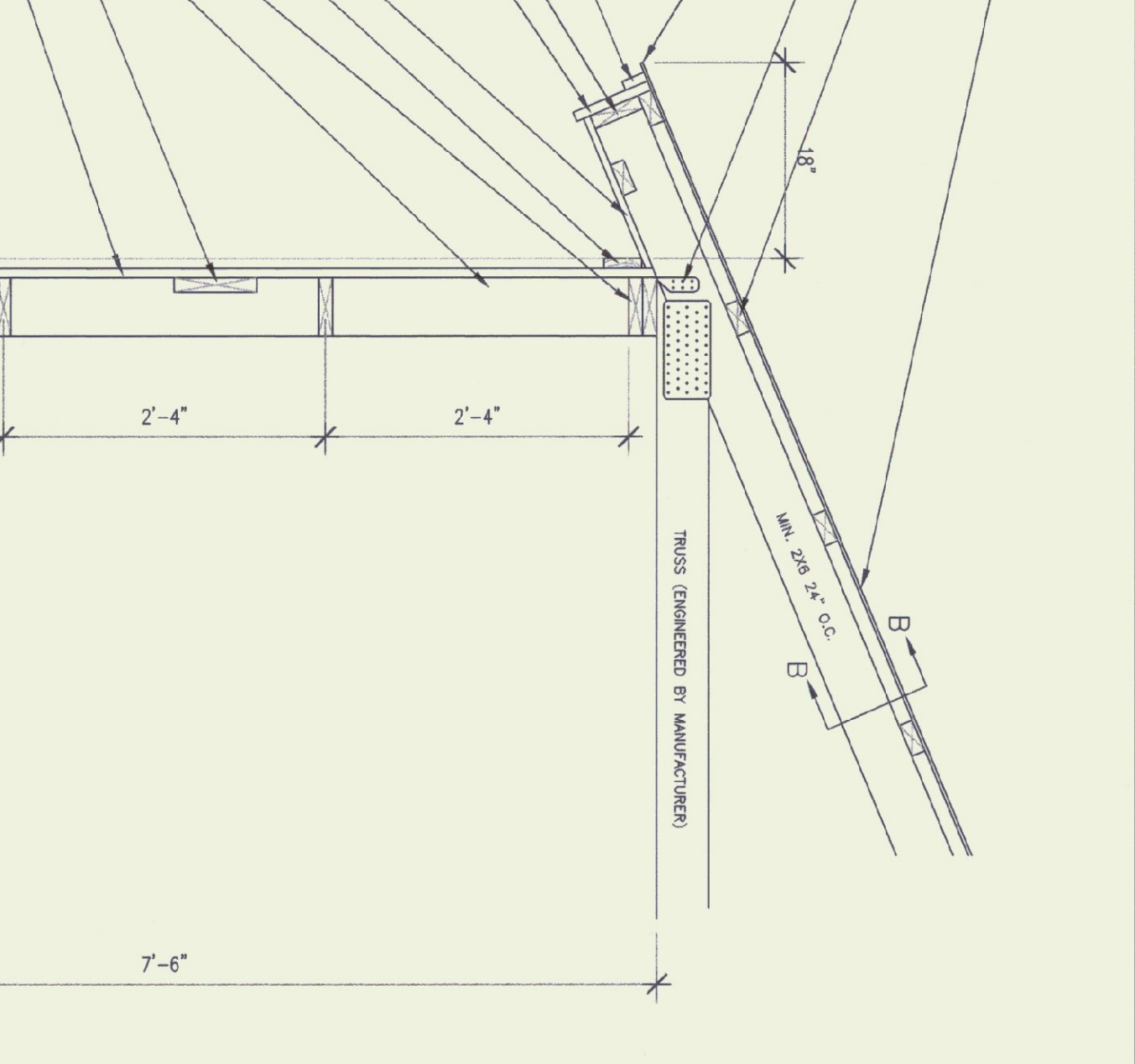
EXPANSION JOINT DETAIL
N.T.S.



CORNER DETAIL
N.T.S.

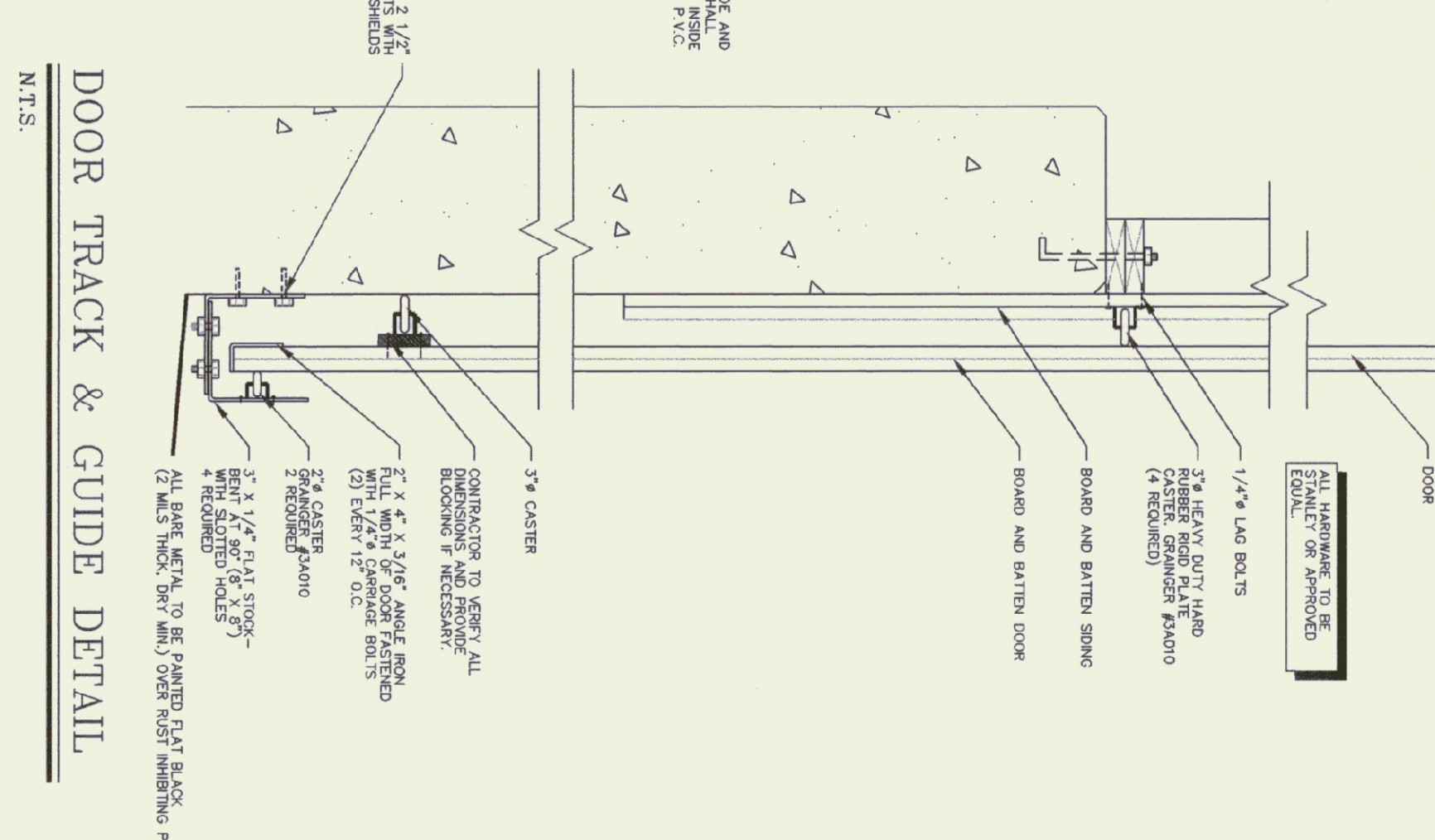


CORNER GUARD
N.T.S.

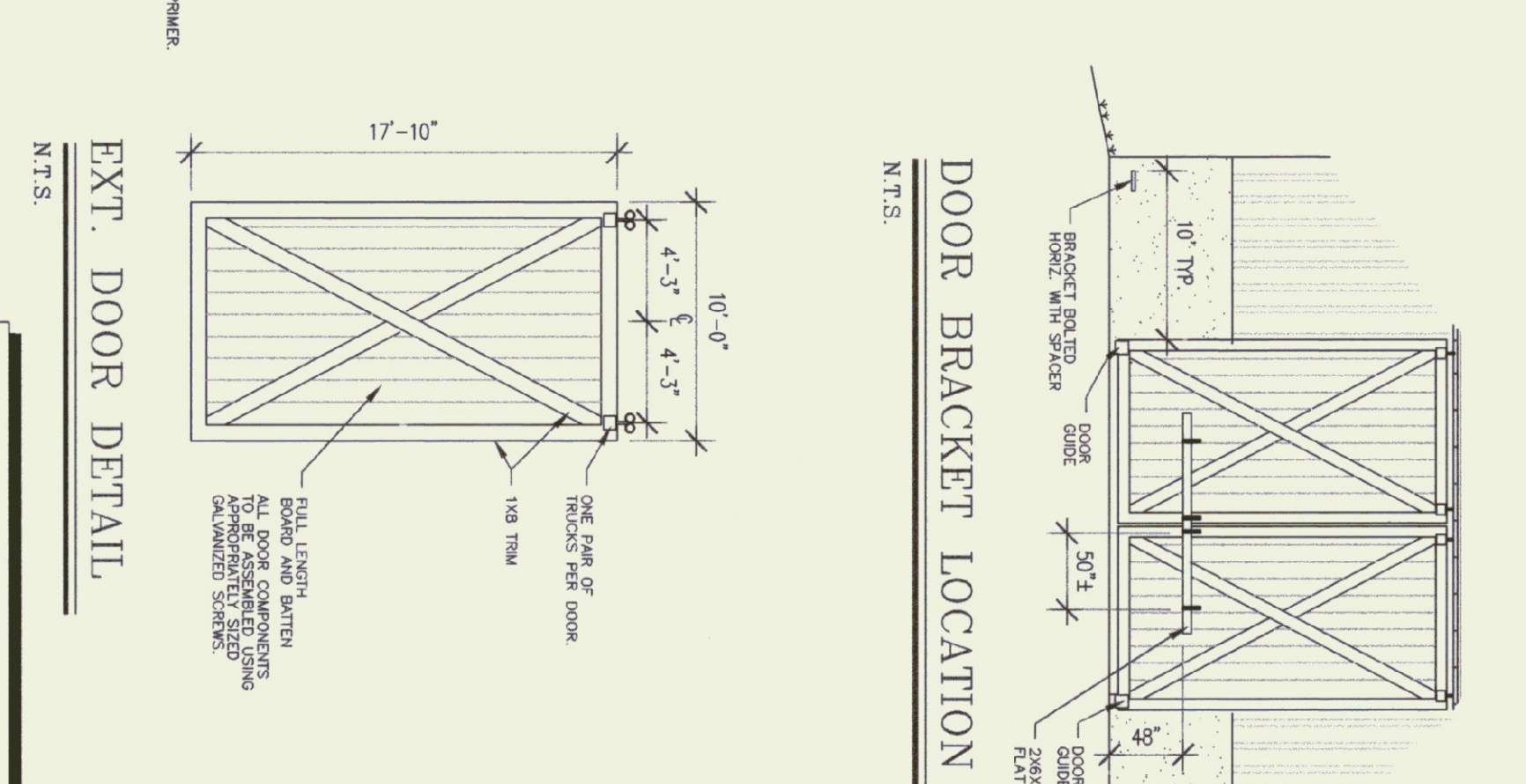


SECTION A-A
N.T.S.

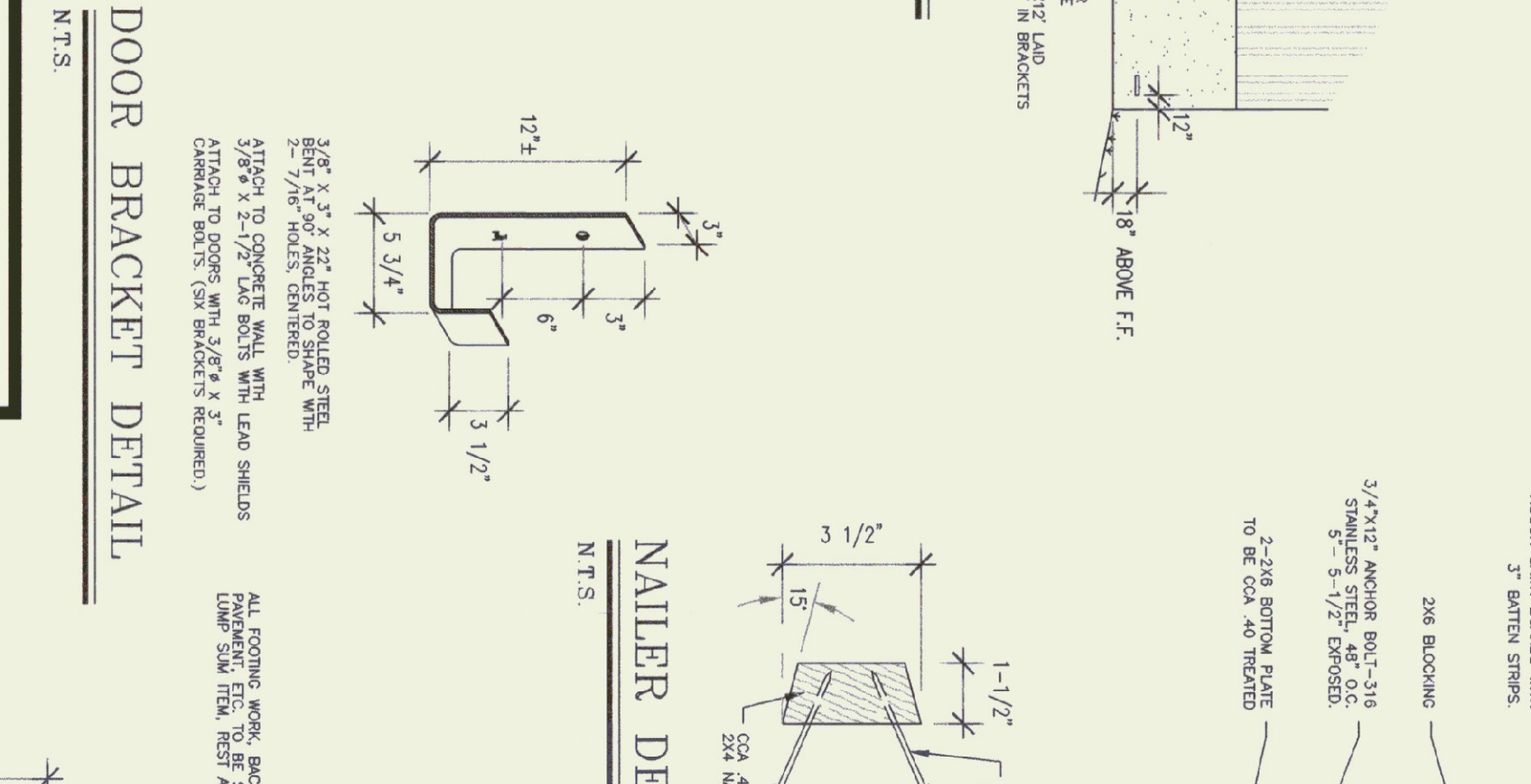
SECTION B-B
N.T.S.



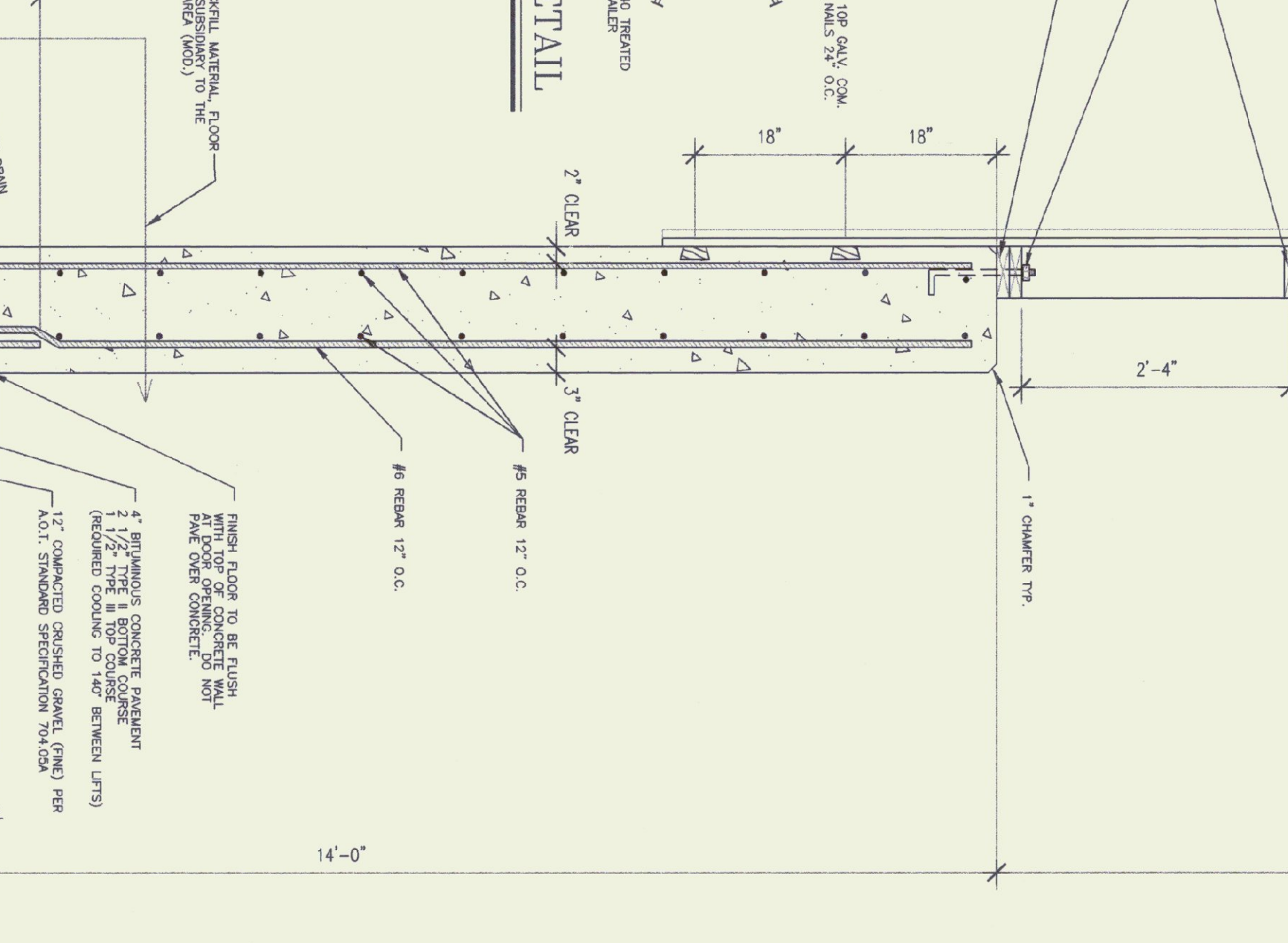
DOOR TRACK & GUIDE DETAIL
N.T.S.



DOOR BRACKET LOCATION
N.T.S.



DOOR BRACKET DETAIL
N.T.S.



NAILER DETAIL
N.T.S.

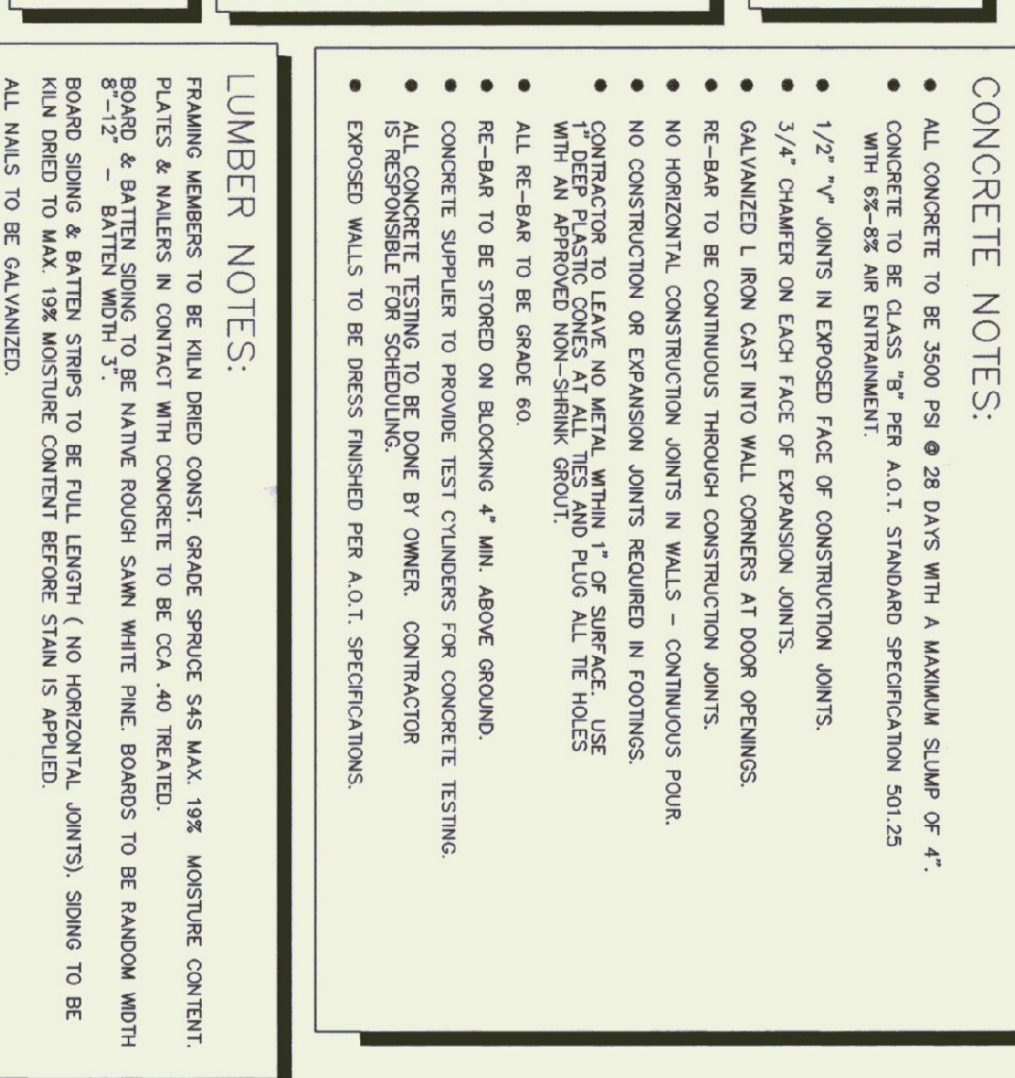
GENERAL NOTES:
ALL MATERIAL TO BE FURNISHED BY CONTRACTOR.
ALL ELECTRICAL WORK SHALL COMPLY WITH N.E.C.
ALL FRAMING AND BOARD & BATTEN SHALL BE FASTENED USING APPROPRIATELY SIZED FASTENERS AND ACCORDING TO INDUSTRY STANDARDS.

TRUSS NOTES:
TRUSS MANUFACTURER TO SEND SUBMISSIONS TO THE RESIDENT ENGINEER.
TRUSS MANUFACTURER TO PROVIDE THE CONTRACTOR WITH ALL THE NECESSARY INSTRUCTIONS FOR PROPER TRUSS INSTALLATION, ANCHORAGE, BRACING, LIFTING, ETC.

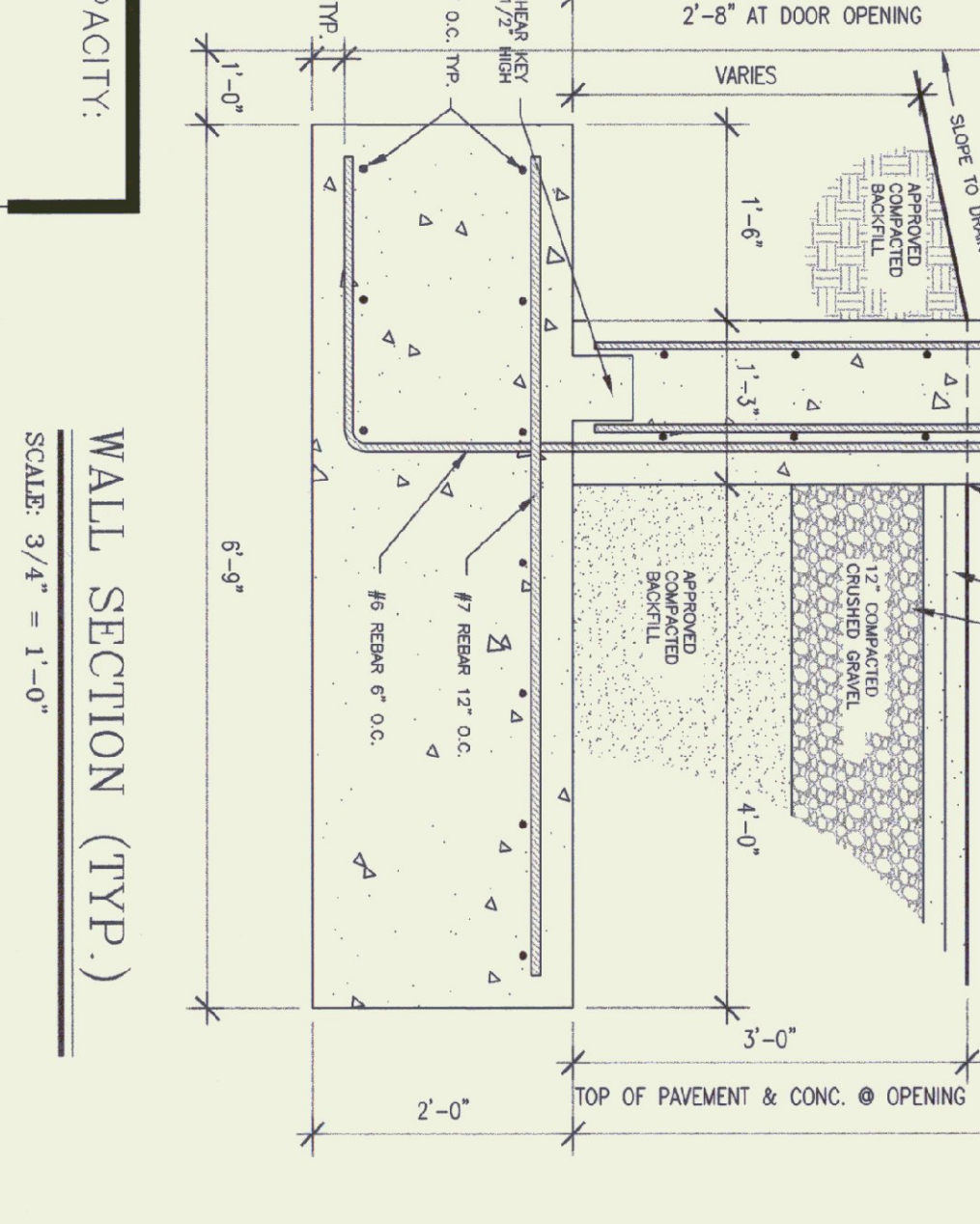
FINISH NOTES:
ALL BOARDS & BATTENS TO BE STAINED WITH ONE COAT ALL SURFACES PRIOR TO INSTALLATION.
AFTER INSTALLATION EXTERIOR SIDING TO RECEIVE (1) ADDITIONAL COAT OF STAIN.
SEMI-TRANSPARENT & THE SECOND COAT WILL BE HIGH PREVENT STAIN.

CONCRETE NOTES:
ALL CONCRETE TO BE 3500 PSI @ 28 DAYS WITH A MINIMUM SLUMP OF 4".
CONCRETE TO BE CLASS "B" PER A.O.T. STANDARD SPECIFICATION 501.25 WITH 65-85 AIR ENTRAINMENT.
1/2" V- JOINTS IN EXPOSED FACE OF CONSTRUCTION JOINTS.
3/4" CHAMFER ON EACH FACE OF CONSTRUCTION JOINTS.
GALVANIZED L IRON CAST INTO WALL CONCRETS AT DOOR OPENINGS.
NO HORIZONTAL CONSTRUCTION JOINTS IN WALLS - CONTINUOUS POUR.
NO CONSTRUCTION OR EXPANSION JOINTS REQUIRED IN FOOTINGS.
CONTRACTOR TO LEAVE NO METAL WITHIN 1" OF SURFACE. USE WELDED REINFORCING CHAIRS (SEE DETAIL).
ALL RE-BAR TO BE GRADE 60.
RE-BAR TO BE STORED ON ELEVATION 4" MIN. ABOVE GROUND.
ALL CONCRETE TESTING TO BE DONE BY OWNER, CONTRACTOR.
EXPOSED WALLS TO BE DRESS FINISHED PER A.O.T. SPECIFICATIONS.

LUMBER NOTES:
FRAMING MEMBERS TO BE KILN DRIED CONST. GRADE SPRUCE 54S MAX. 12% MOISTURE CONTENT.
PLATES & NAILED IN CONTACT WITH CONCRETE TO BE COA 40 TREATED.
BOARD & BATTEN SIDING TO BE MAINE ROUGH SAWN WHITE PINE BOARDS TO BE RANDOM WIDTH 8"-12" BATTEN WITH 3" BATTEN WITH 3" BOARD SIDING TO BE FULL LENGTH (NO HORIZONTAL JOINTS). SIDING TO BE KILN DRIED TO MAX. 12% MOISTURE CONTENT (HIGH PREVENT STAIN IS APPLIED).
ALL NAILS TO BE GALVANIZED.



WALL SECTION (TYP.)
SCALE: 3/4" = 1'-0"



SAND/SALT CAPACITY:
2000 CY (2890 TONS)

NO.	DATE	DESCRIPTION
12-29-97	G.D.N.	
7-8-98	G.D.N.	
2-10-99	B.T.M.	

BRIDPORT MAINTENANCE FACILITY
50 X 64 SALT SHED
BRIDPORT VERMONT

STATE OF VERMONT
DEPARTMENT OF BUILDINGS
AND GENERAL SERVICES
AGENCY OF ADMINISTRATION
MONTPELIER, VERMONT