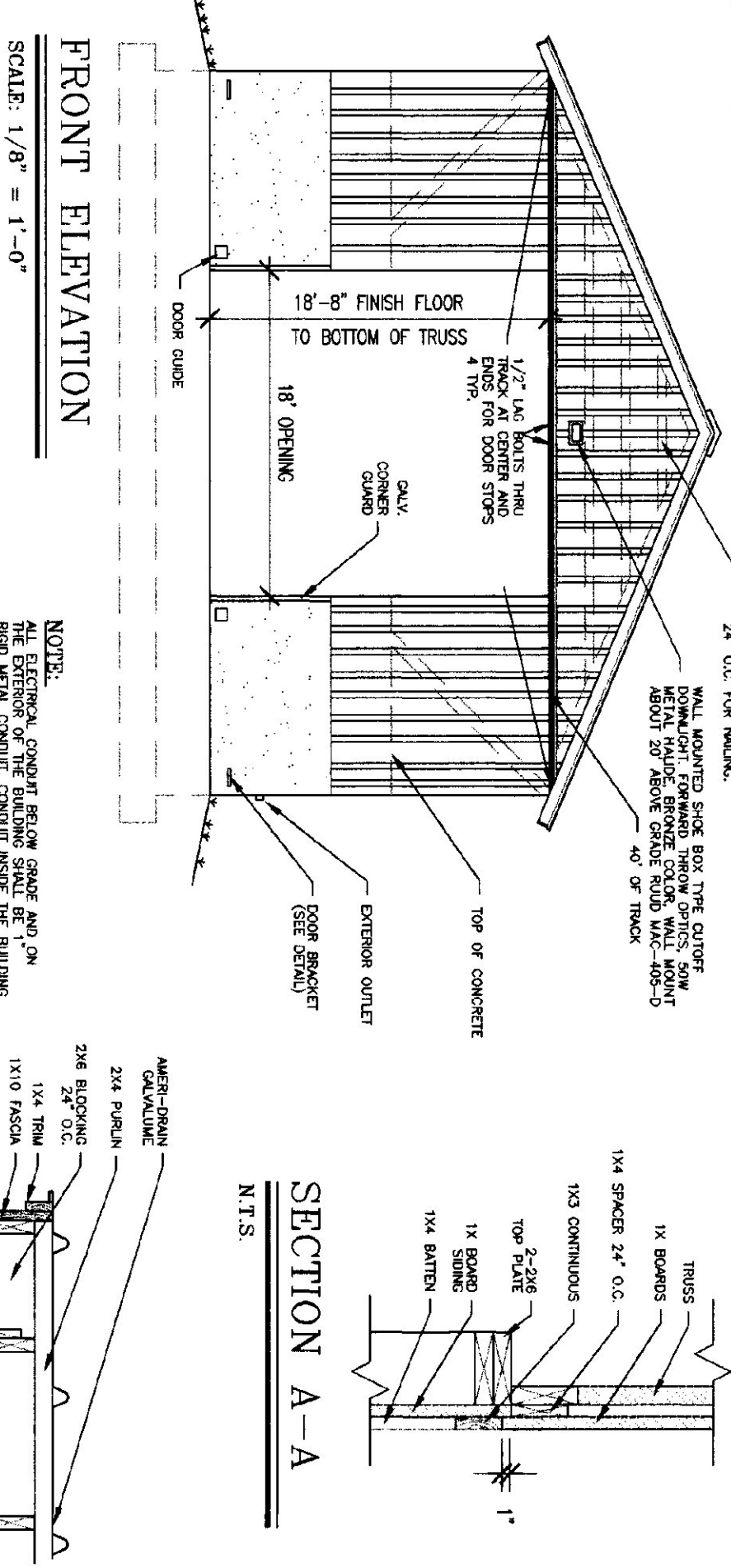
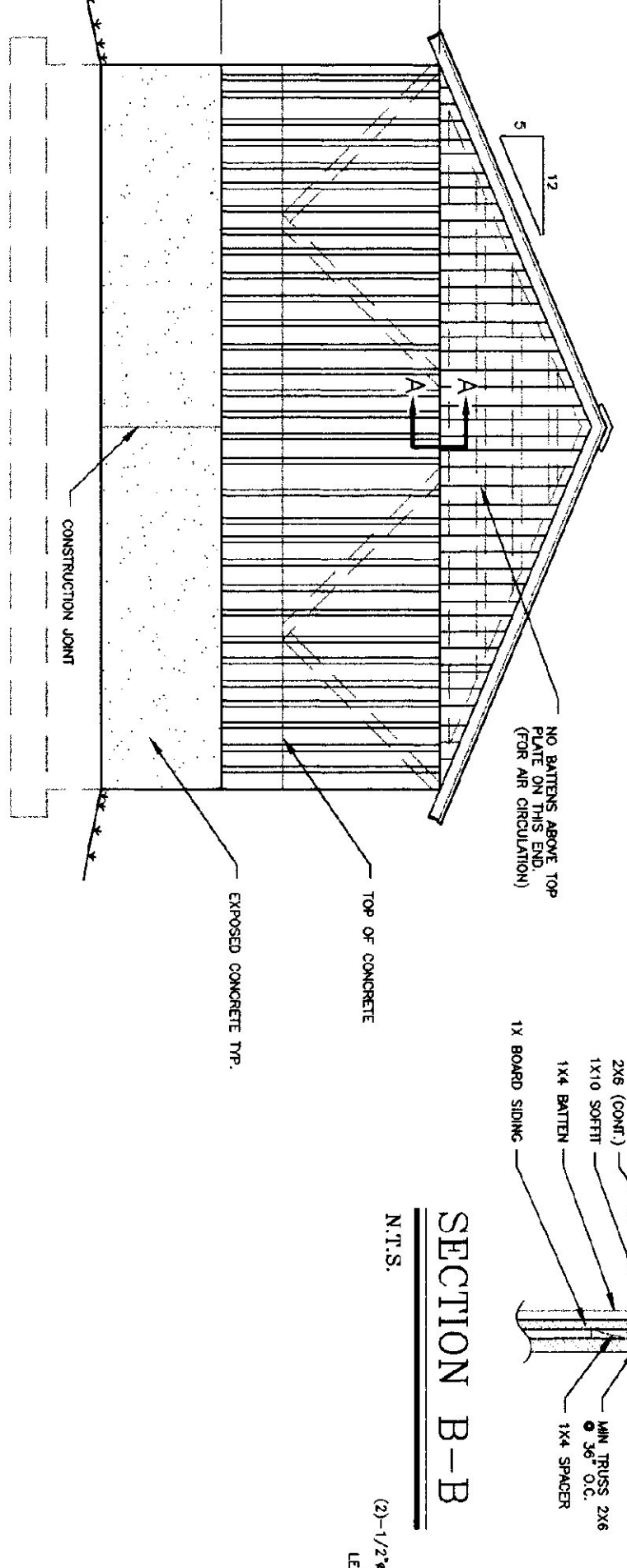


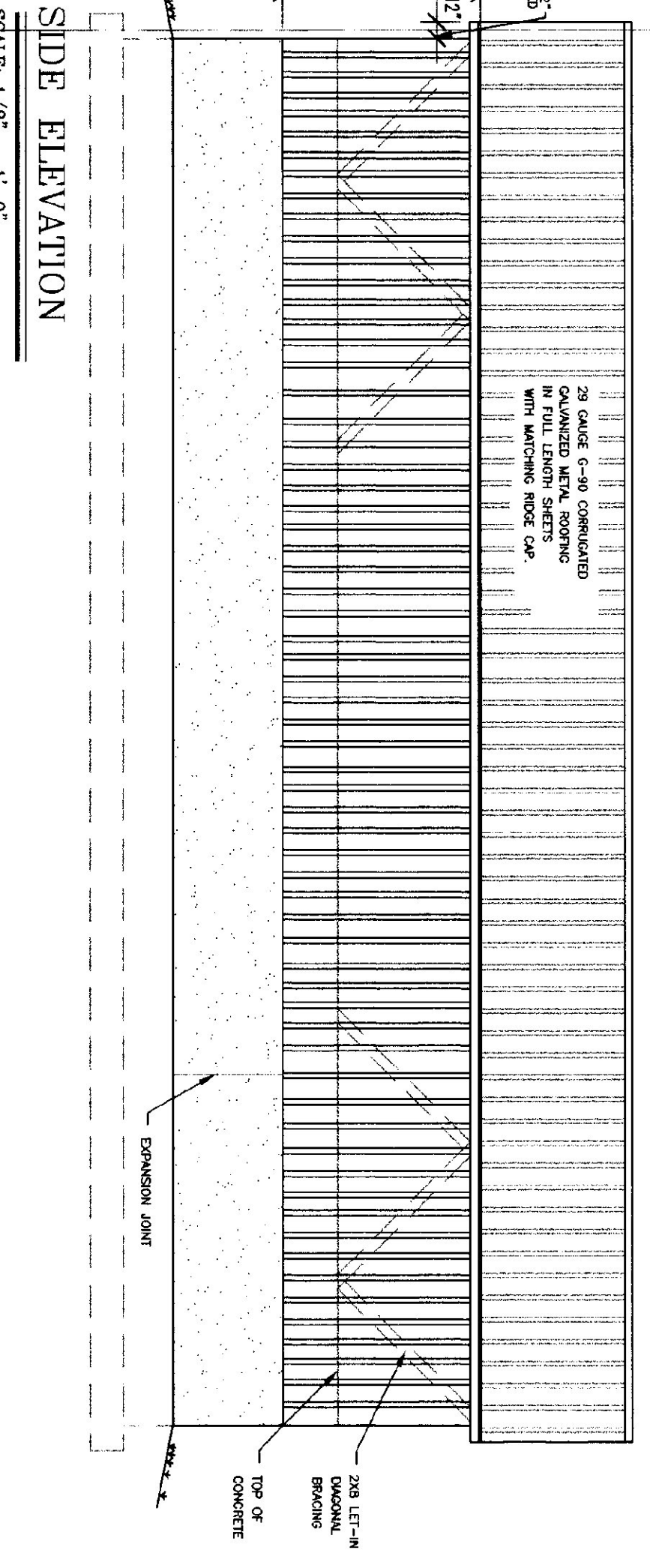
FOUNDATION PLAN
SCALE: 1/8" = 1'-0"



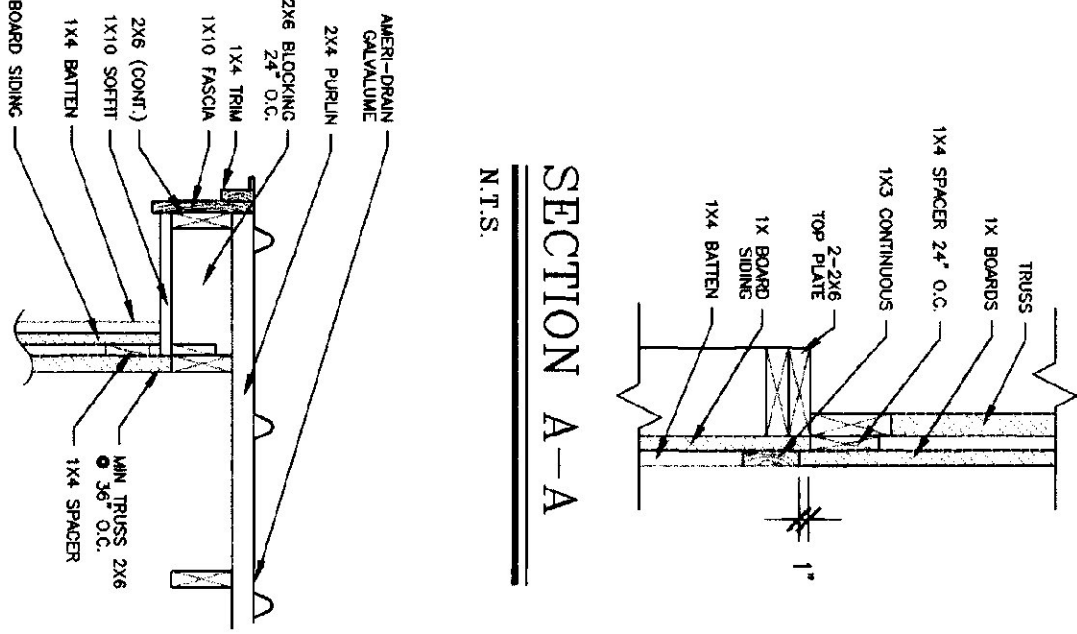
FRONT ELEVATION
SCALE: 1/8" = 1'-0"



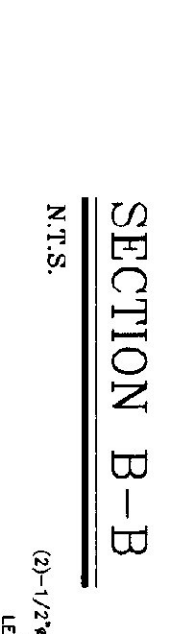
BACK ELEVATION
SCALE: 1/8" = 1'-0"



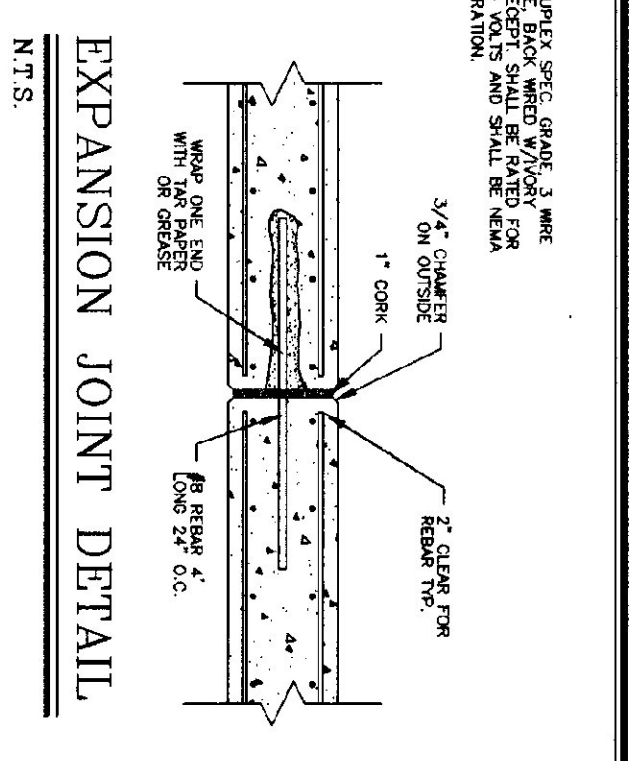
SIDE ELEVATION
SCALE: 1/8" = 1'-0"



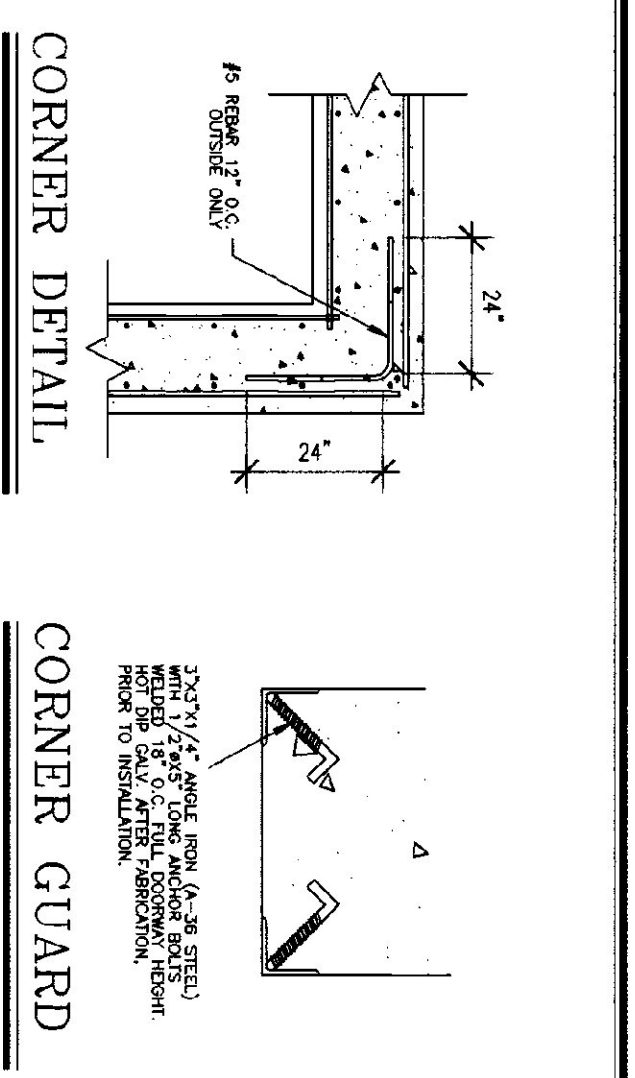
SECTION A-A
N.T.S.



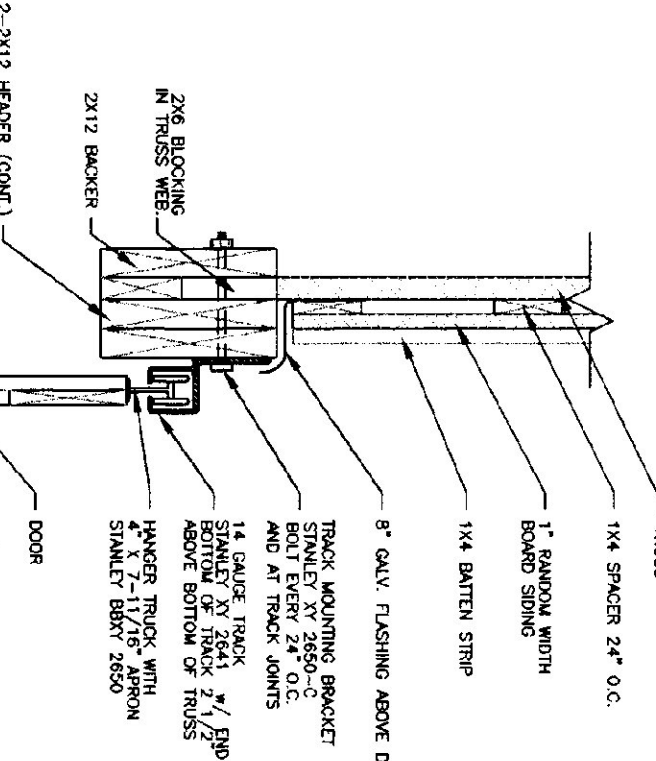
SECTION B-B
N.T.S.



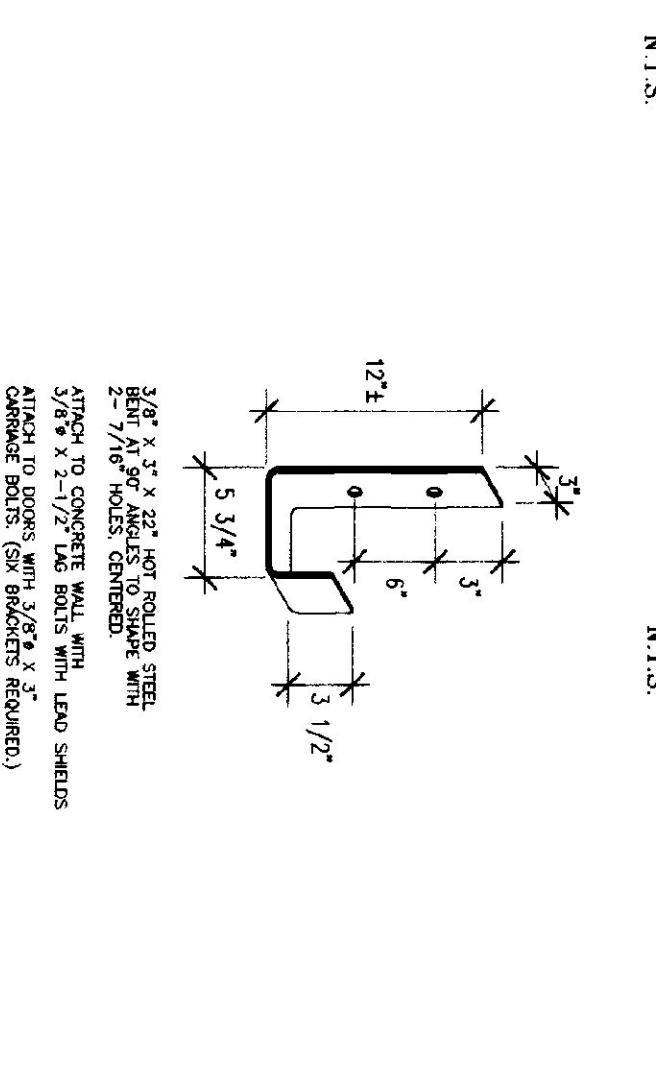
EXPANSION JOINT DETAIL
N.T.S.



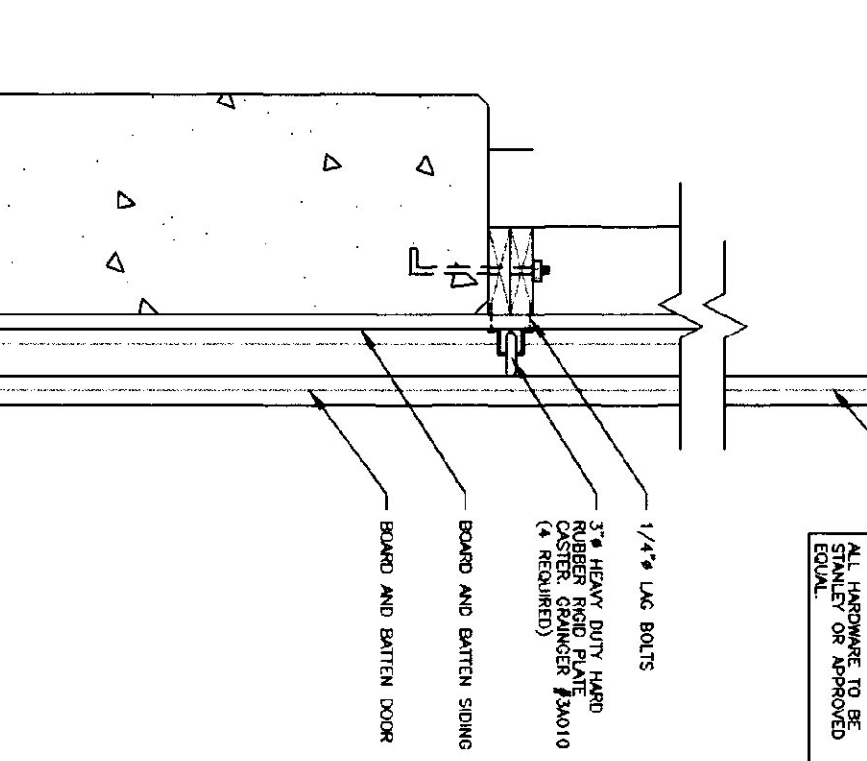
CORNER DETAIL
N.T.S.



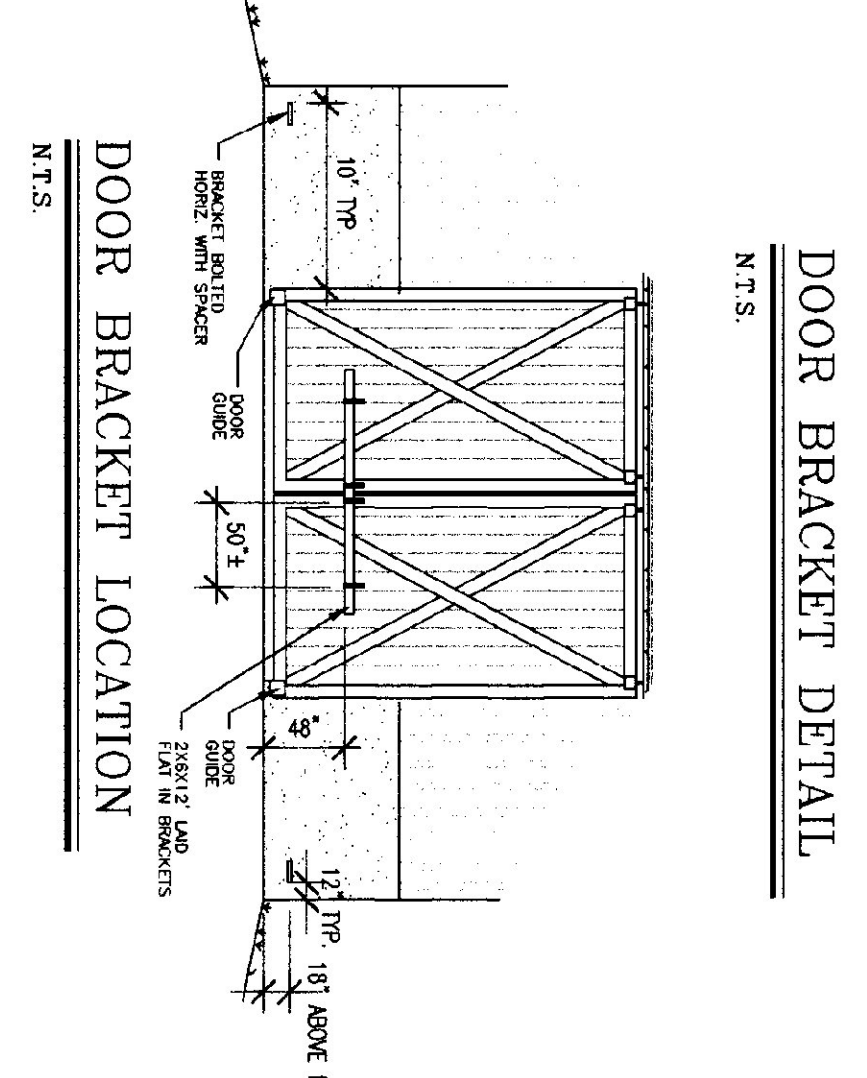
DOOR TRACK & GUIDE DETAIL
N.T.S.



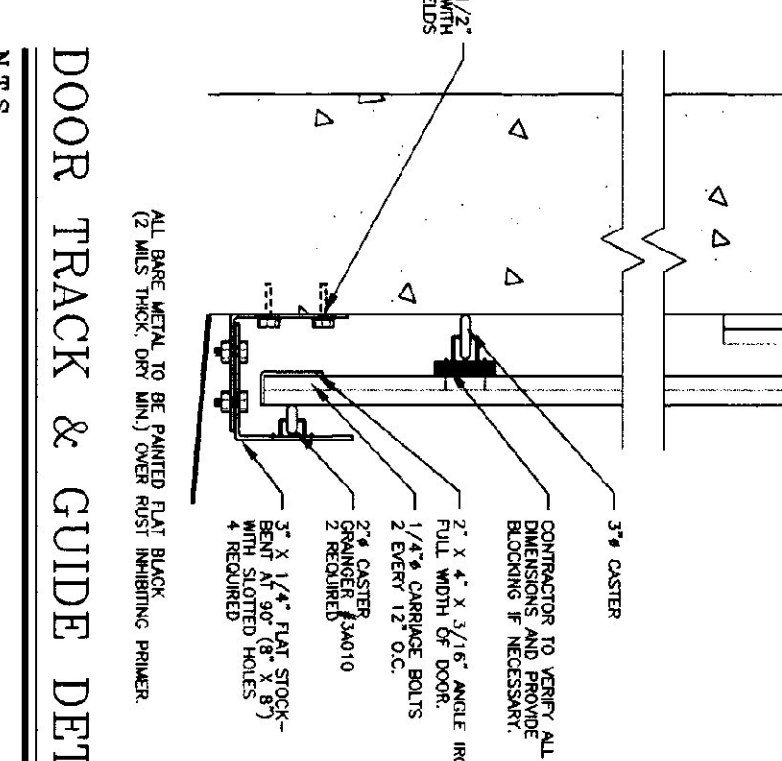
DOOR BRACKET DETAIL
N.T.S.



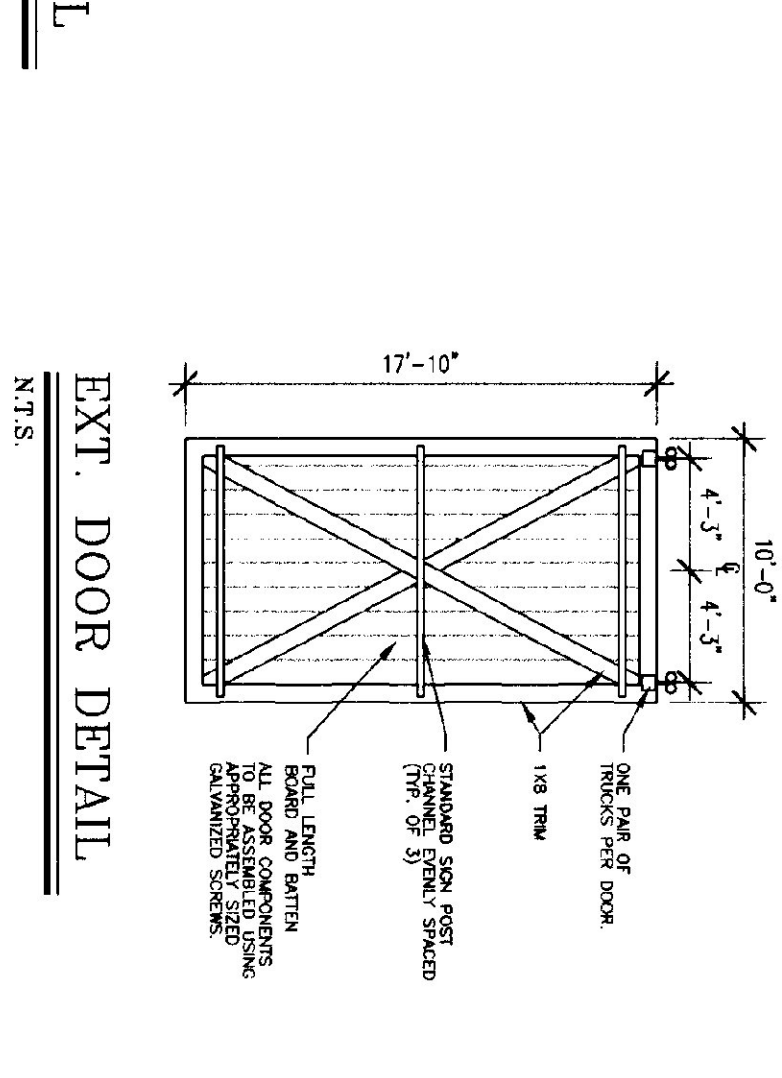
DOOR BRACKET LOCATION
N.T.S.



NAILER DETAIL
N.T.S.



EXT. DOOR DETAIL
N.T.S.



WALL SECTION (TYP.)
SCALE: 3/4" = 1'-0"

GENERAL NOTES:
ALL MATERIAL TO BE FURNISHED BY CONTRACTOR.
ALL EXPOSED METAL, EXCEPT GALVANIZED, CORNER ANGLES, DOOR GUIDES, BRACKETS ETC. SHALL BE PAINTED FLAT BLACK (2 MILS THICK DRY, MIN) OVER RUST INHIBITING PRIMER.
ALL ELECTRICAL WORK SHALL COMPLY WITH N.E.C.

TRUSS NOTES:
TRUSS MANUFACTURER TO SUBMIT SUBMISSIONS TO THE RESIDENT ENGINEER FOR APPROVAL.
TRUSS MANUFACTURER TO PROVIDE THE CONTRACTOR WITH ALL THE NECESSARY TRUSS MANUFACTURER AND STAMPED SUBMISSIONS FOR APPROVAL FROM THE RESIDENT ENGINEER.
TRUSS DESIGN IN ACCORDANCE WITH THE 1987 B.O.C.C. FOR VERMONT.
MINIMUM LOADS:
LIVE - 60 P.S.F. - PER 1994 VERMONT FIRE PROTECTION CODE.
DEAD - AS CALCULATED FROM TRUSS MATERIALS AND IN ADDITION WIND - 25 P.S.F.

FINISH NOTES:
ALL BOARDS & BATTENS TO BE STAINED WITH ONE COAT ALL SURFACES PRIOR TO INSTALLATION.
ALL TRUSS MANUFACTURER SUBMISSIONS TO BE ACCORDING TO APPROVAL FROM THE RESIDENT ENGINEER.
SEMI-TRANSPARENT & THE SECOND COAT WILL BE HIGH PIGMENT STAIN.

CONCRETE NOTES:
ALL CONCRETE TO BE 3000 P.S.I. @ 28 DAYS WITH A MAXIMUM SLUMP OF 4".
USE 1/2" AIR ENTRAINMENT.
1/2" x 1/2" JOINTS IN EXPOSED FACE OF CONSTRUCTION JOINTS.
3/4" CHAMFER ON EACH FACE OF EXPANSION JOINTS.
GALVANIZED IRON CAST INTO WALL CONCRETS AT DOOR OPENINGS.
RE-BAR TO BE CONTINUOUS THROUGH CONSTRUCTION JOINTS.
NO HORIZONTAL CONSTRUCTION JOINTS IN WALLS - CONTINUOUS POUR.
NO CONSTRUCTION OR EXPANSION JOINTS REQUIRED IN FOUNDATIONS.
CONTRACTOR TO LEAVE NO METAL WITHIN 1" OF SURFACE. USE CONCRETE REPAIR COMPOUND TO PATCH ALL HOLES.
ALL RE-BAR TO BE GRADE 60.
RE-BAR TO BE STOKED ON BLOCKING 1" MIN ABOVE GROUND.
CONCRETE SUPPLIER TO PROVIDE TEST CYLINDERS FOR CONCRETE TESTING.
RESPONSIBILITY FOR PROTECTING EXISTING UTILITIES TO REMAIN BY OWNER. CONTRACTOR TO BE RESPONSIBLE FOR PROTECTING EXISTING UTILITIES TO REMAIN.
EXPOSED WALLS TO BE DRESS FINISHED PER A.O.I. SPECIFICATIONS.

LUMBER NOTES:
FRAMING MEMBERS TO BE KILN DRIED CONIST. GRADE SPRUCE 5/4S MAX. 19% MOISTURE CONTENT.
BOARD & BATTEN IN CONTACT WITH CONCRETE TO BE CC-40 TREATED.
BOARD & BATTEN STAIN TO BE WATER ROUGH SAME WHITE PINE. BOARDS TO BE RANDOM WIDTH.
BOARD STAIN & BATTEN STAIN TO BE FULL LENGTH (NO HORIZONTAL JOINTS).
ALL WALLS TO BE GALVANIZED.