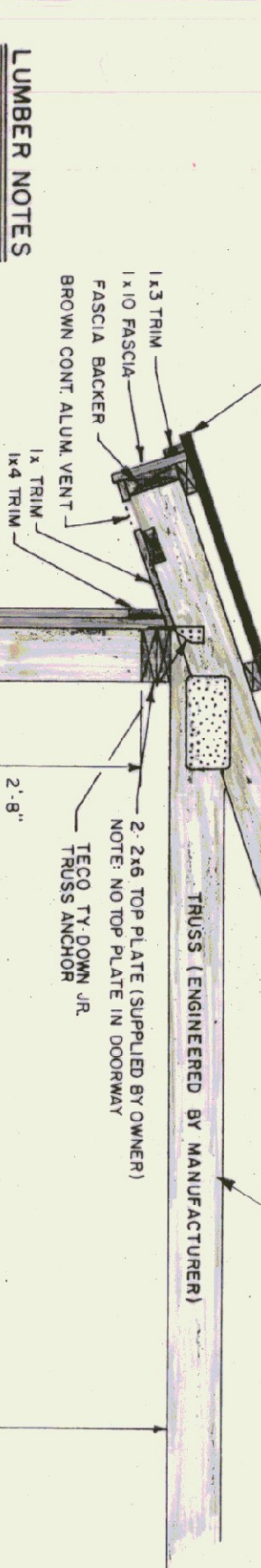


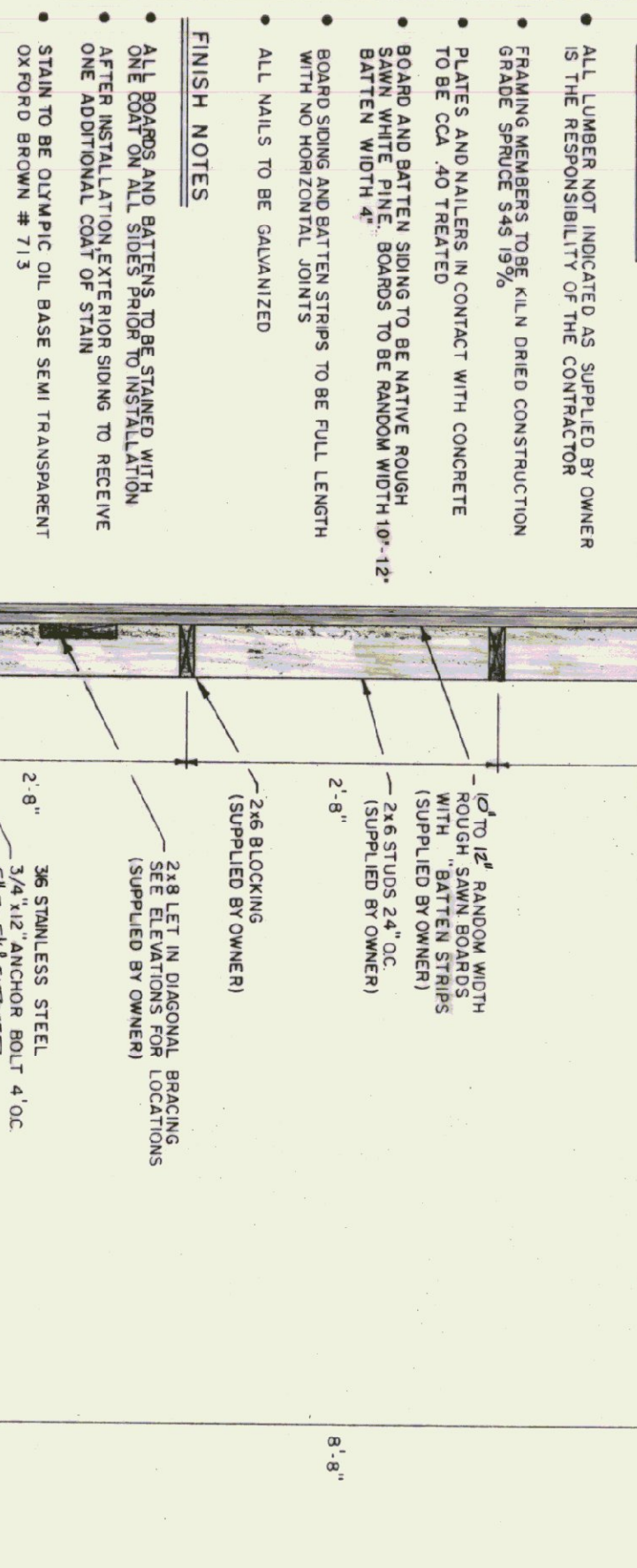
TRUSS NOTES

- TRUSS MANUFACTURER TO PROVIDE THE DEPT. OF STATE BUILDINGS ENGINEER A SET OF ENGINEERED & STAMPED DRAWINGS FOR APPROVAL PRIOR TO TRUSS MANUFACTURE
- TRUSS MANUFACTURER TO PROVIDE THE CONTRACTOR WITH ALL NECESSARY INSTRUCTIONS FOR PROPER TRUSS INSTALLATION, ANCHORAGE, BRACING, LIFTING ETC.
- TRUSS DESIGN LOADS IN ACCORDANCE WITH THE 1987 BOCA 1991 VERMONT MINIMUM LOADS:
- LIVE - PER 1987 BOCA FOR VT (50 PSF MIN)
- DEAD - AS CALCULATED FROM TRUSS & ROOF MATERIALS
- WIND - 53 PSF
- DIAGONAL WIND BRACING PER TRUSS MANUFACTURER

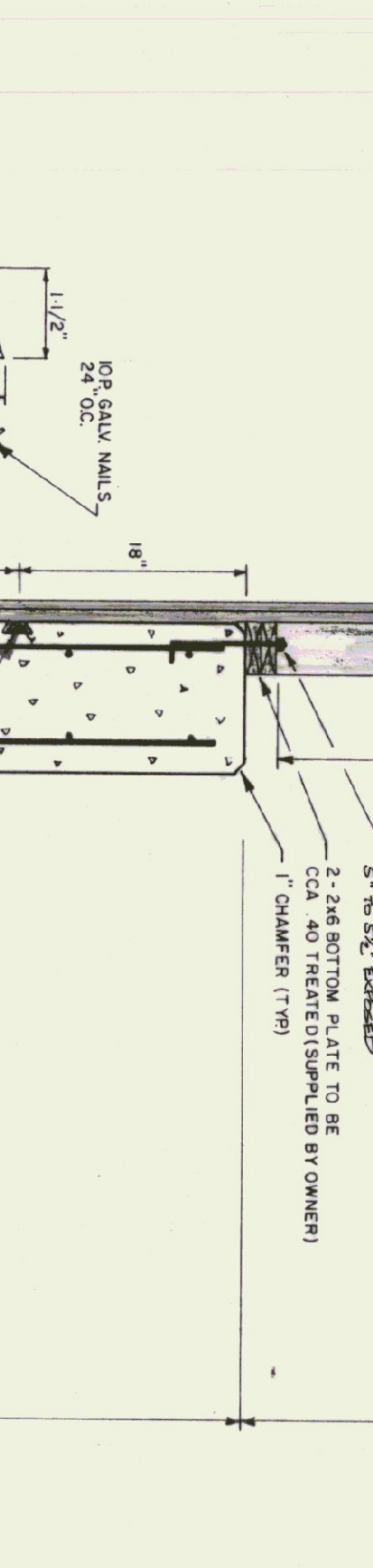


FINISH NOTES

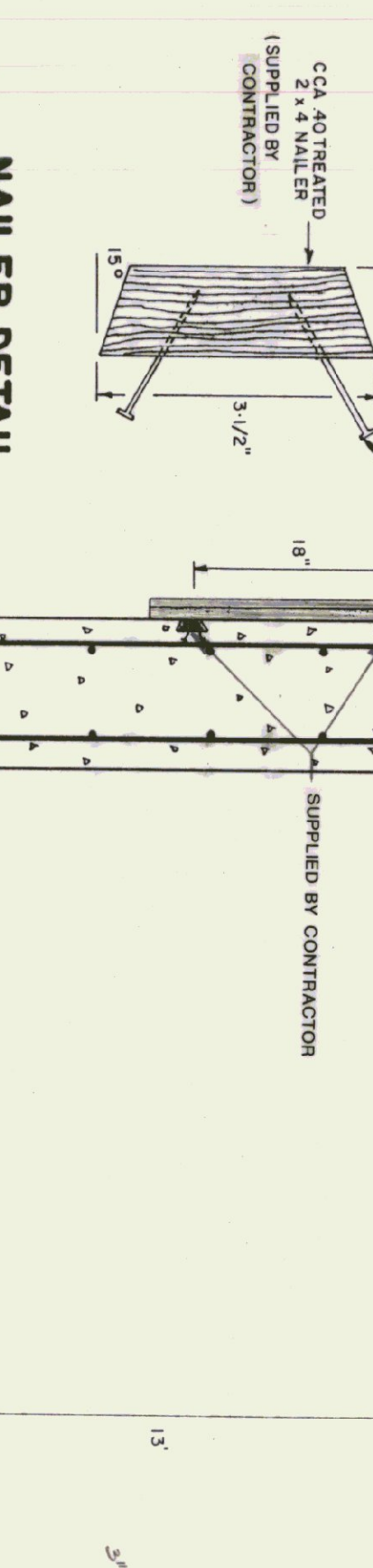
- ALL ROOFING AND BATTENS TO BE STAINED WITH ONE COAT OF ALL SIDES PRIOR TO INSTALLATION
- AFTER INSTALLATION EXTERIOR SIDING TO RECEIVE ONE ADDITIONAL COAT OF STAIN
- STAIN TO BE OLYMPIC OIL BASE SEMI TRANSPARENT OXFORD BROWN # 713



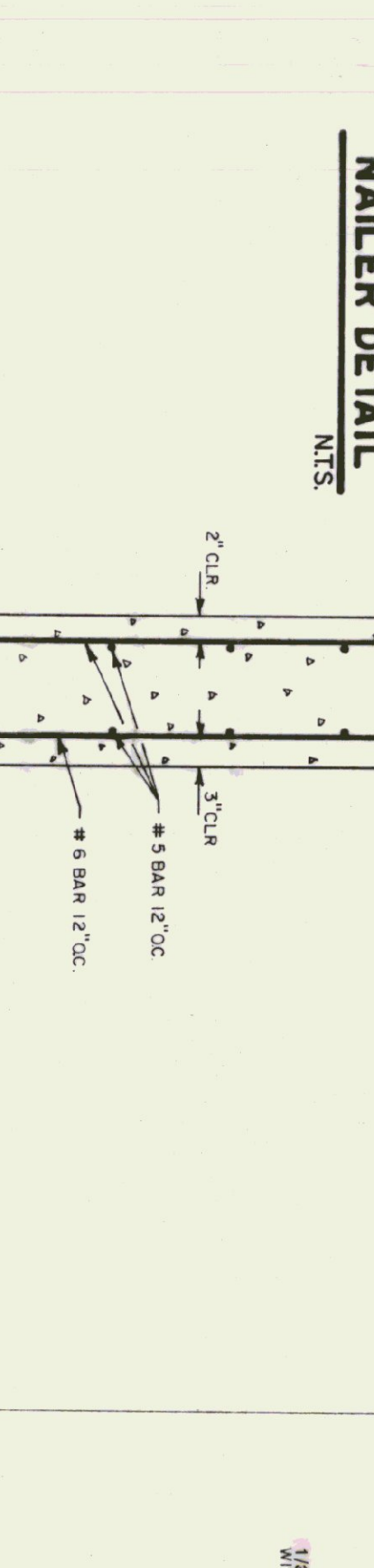
TRACK MOUNT DETAIL
N.T.S.



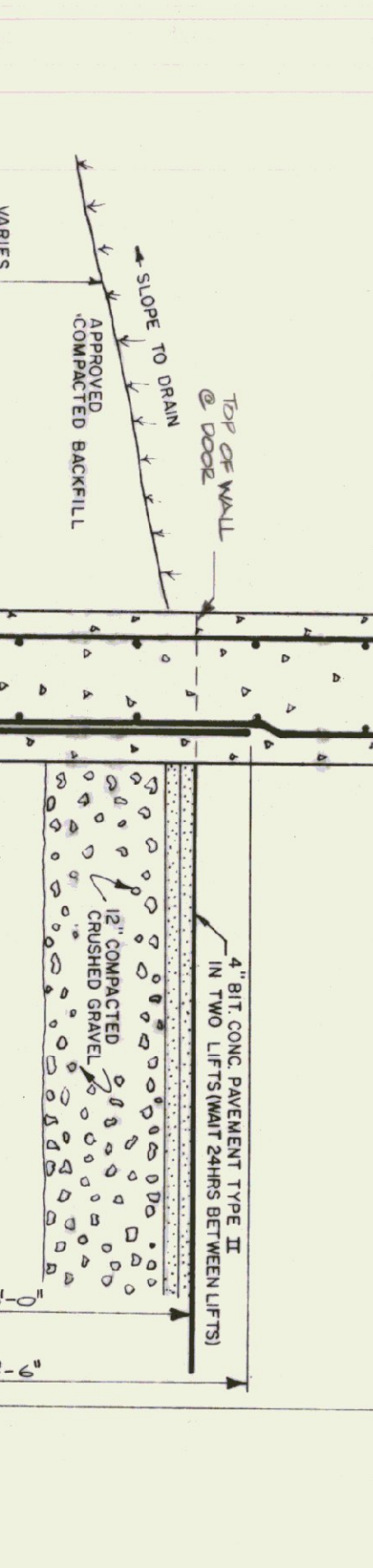
DOOR DETAIL
N.T.S.



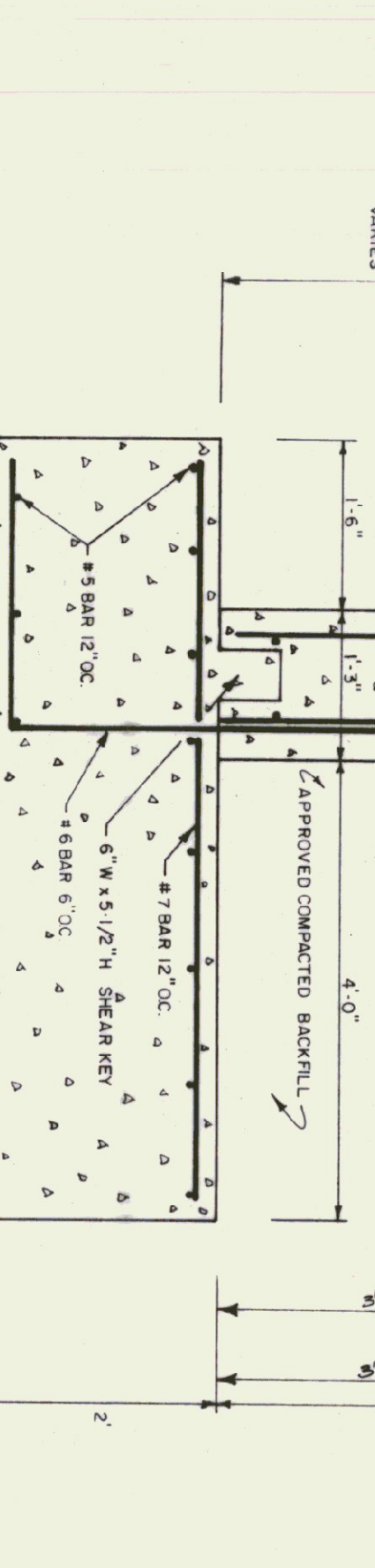
DOOR BRACKET LOCATIONS
N.T.S.



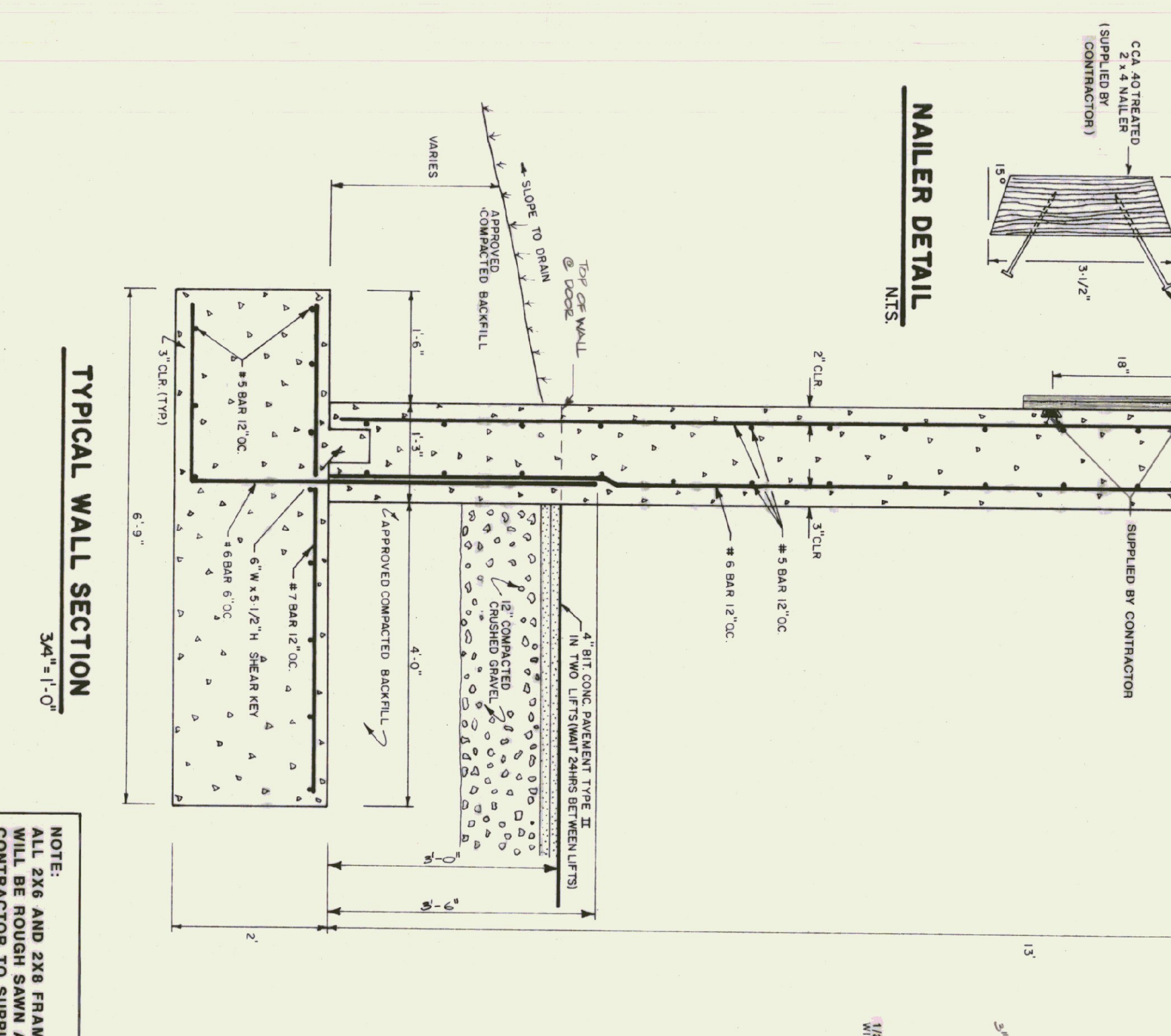
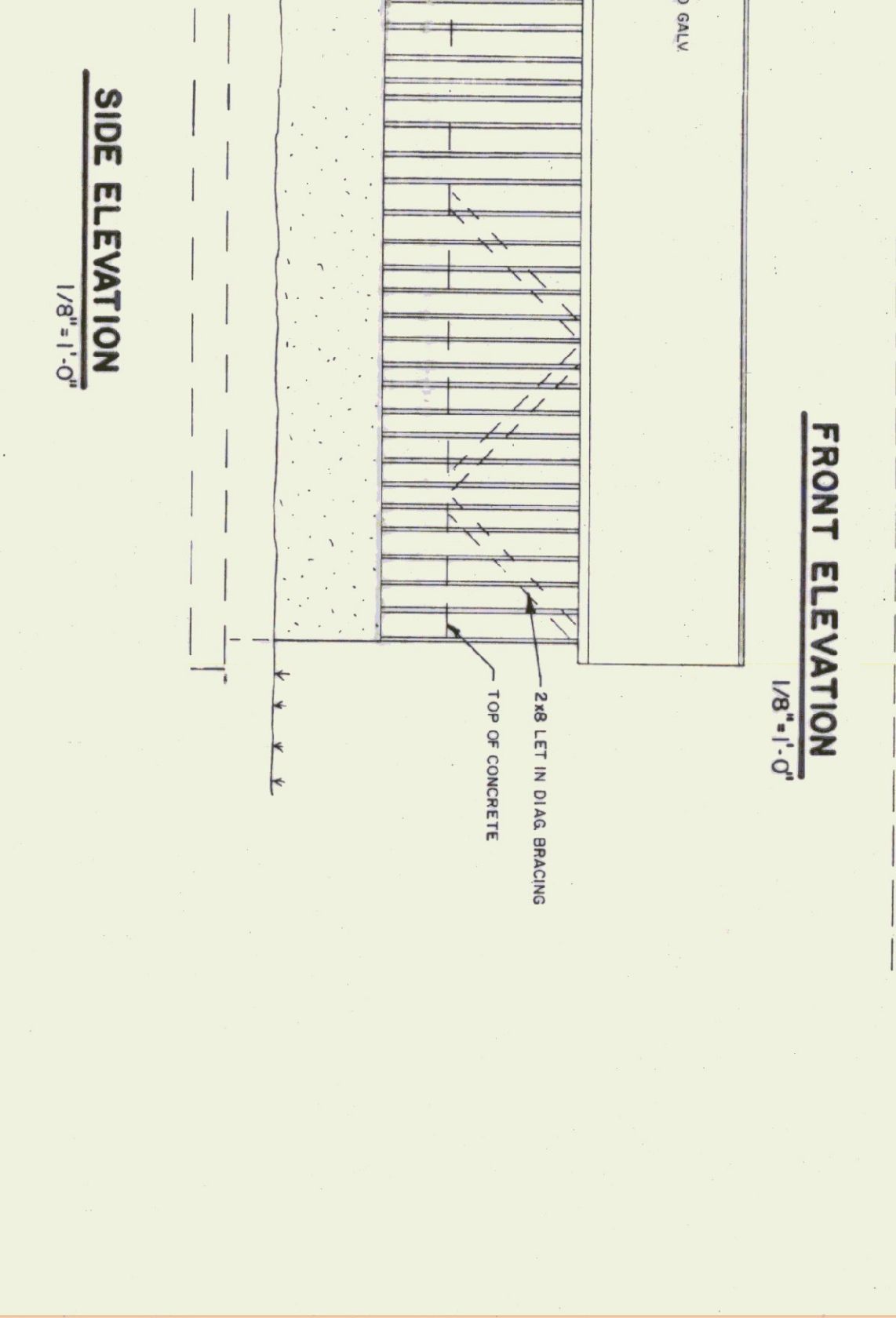
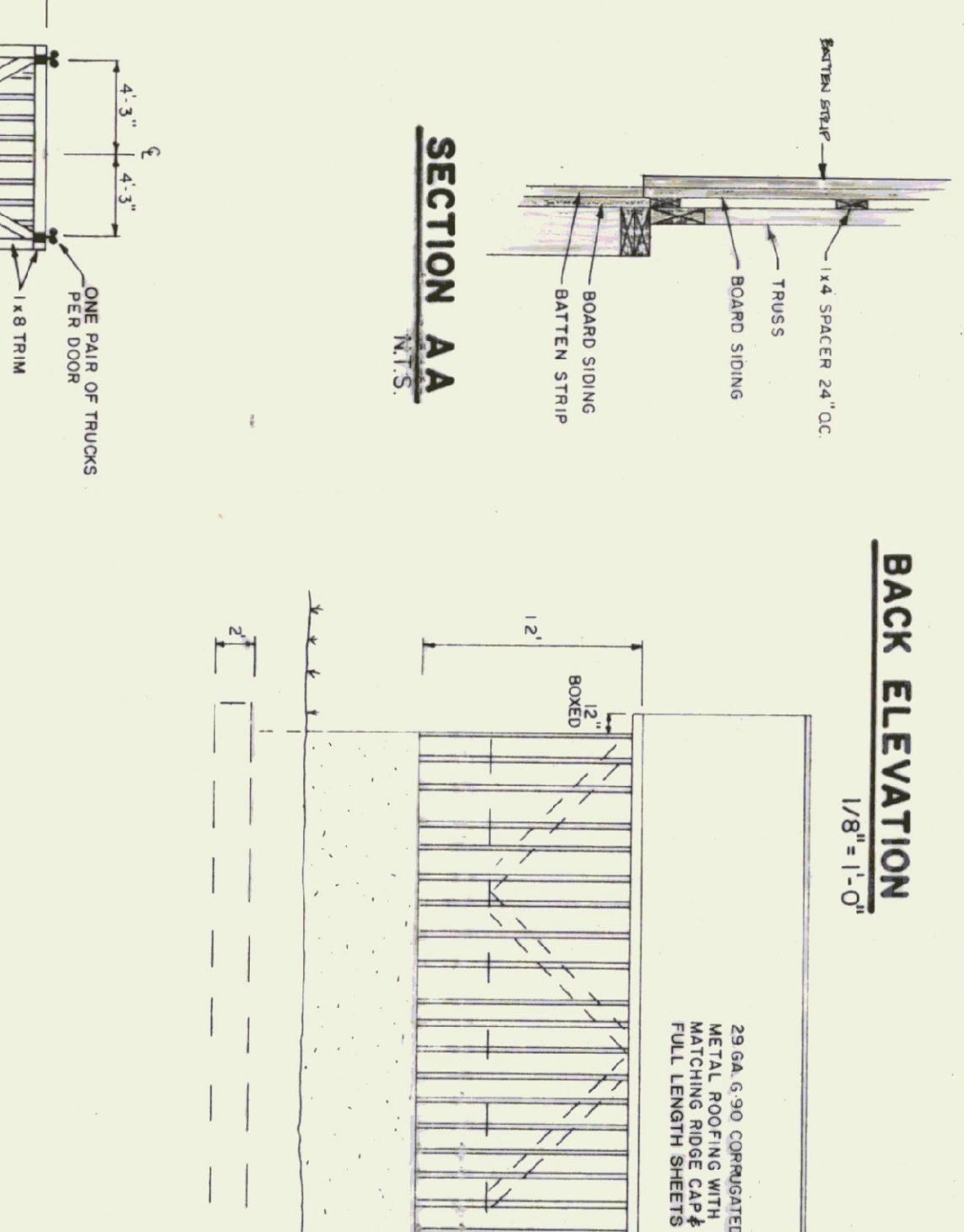
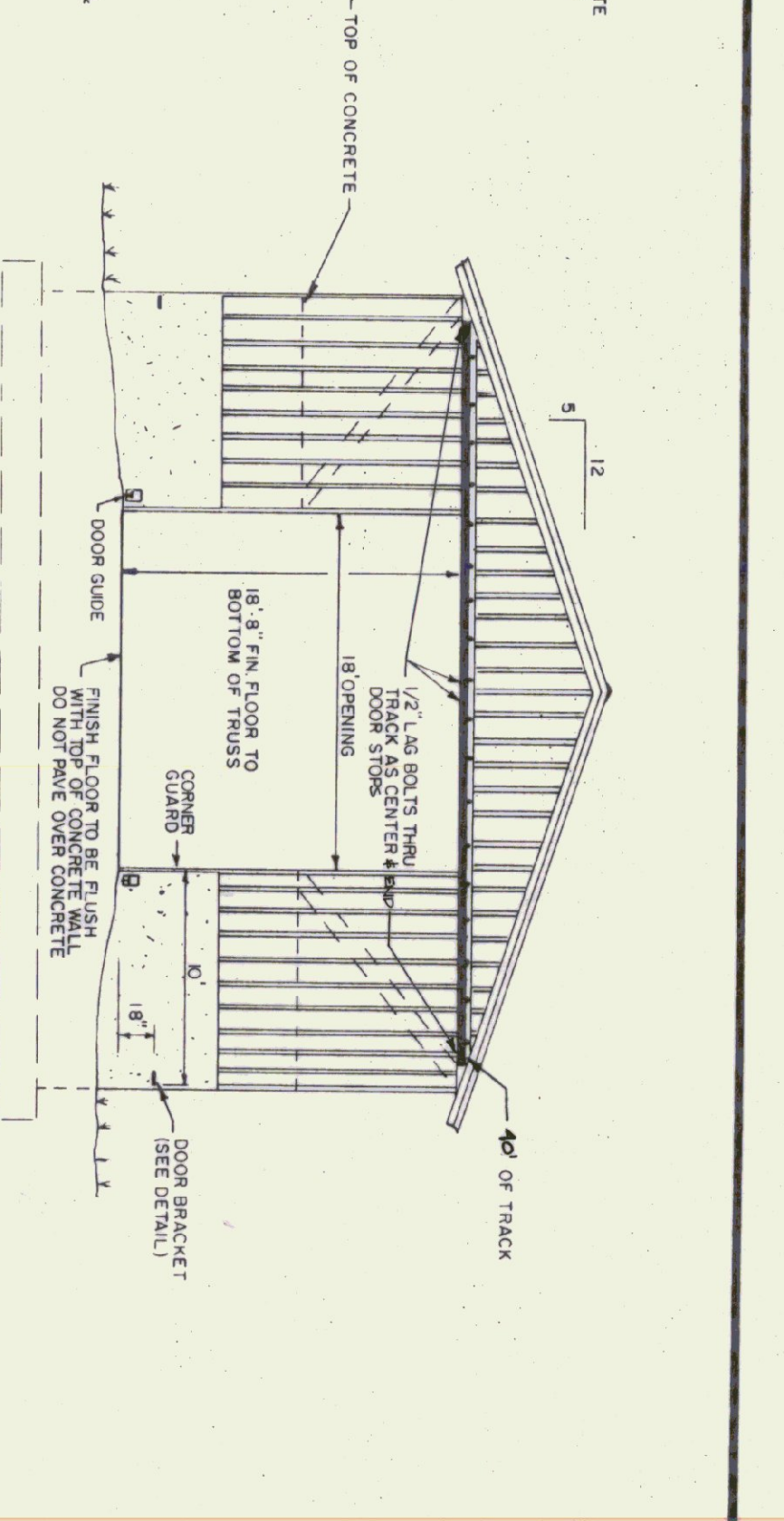
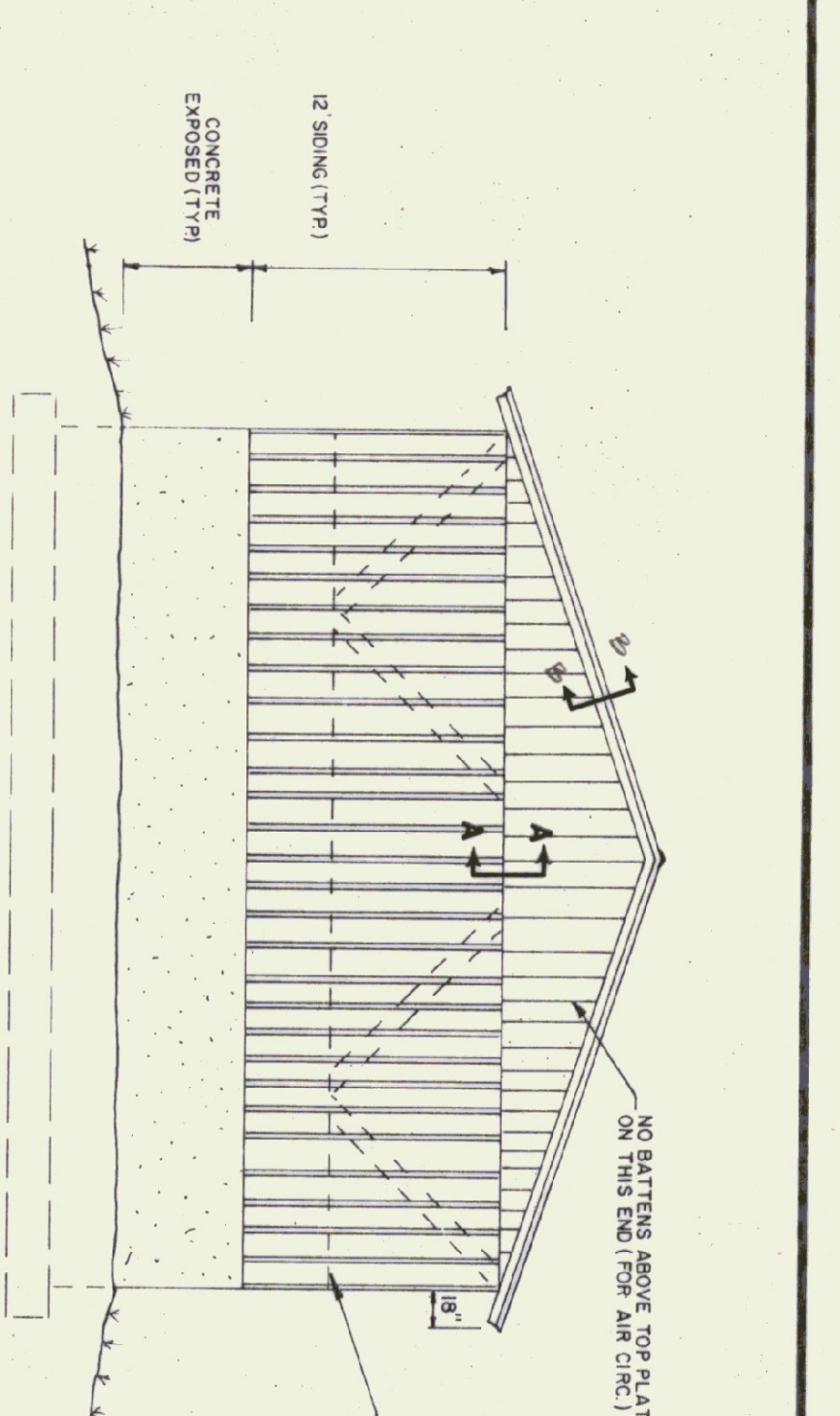
CORNER DETAIL
N.T.S.



EXPANSION JOINT DETAIL
N.T.S.



CORNER GUARD
N.T.S.



CONCRETE NOTES

- ALL CONCRETE TO BE 3500 PSI AT 28 DAYS WITH MAXIMUM SLUMP OF 4"
- EXPOSED WALLS TO BE DRESS FINISHED PER DOT SPEC.
- 1/2" V-JOINTS IN EXPOSED FACE OF CONCT JOINTS.
- 3/4" CHAMFER ON EACH FACE OF EXPANSION JOINTS
- L-IRON CAST INTO WALL CORNERS AT DOOR OPENINGS.
- RE BAR TO BE CONTINUOUS THROUGH CONST JOINTS
- NO HORIZONTAL CONST JOINTS IN WALLS, CONTINUOUS FOUR
- NO CONST OR EXP JOINTS REQUIRED IN FOOTINGS.
- ALL RE BAR TO BE GRADE 60.
- CONTRACTOR TO LEAVE NO METAL WITHIN 1" OF SURFACE USE 1" DEEP PLASTIC CONES AT ALL TIES AND PLUG ALL THE HOLES WITH AN APPROVED NON-SHINKING GROUT.
- RE BAR TO BE STORED ON BLOCKS 4" MIN ABOVE GROUND
- CONCRETE SUPPLIER TO PROVIDE TEST CYLINDERS FOR TESTING BY OWNER
- CONCRETE SUPPLIER TO CONDUCT ON SITE AIR TESTS
- 6-0% AIR ENTRAINMENT



NAILER DETAIL
N.T.S.

NOTE:
ALL 2X6 AND 2X8 FRAMING LUMBER AND BOARD AND BATTEN SIDING WILL BE ROUGH SAWN AND SUPPLIED BY OWNER. (STATE OF VERMONT) CONTRACTOR TO SUPPLY ALL OTHER MATERIAL INCLUDING BOARD AND BATTEN FOR DOORS

STATE OF VERMONT			
DEPARTMENT OF STATE BUILDINGS			
AGENCY OF ADMINISTRATION			
VERMONT			
MONTPELLIER.			
40' X 64' SALT / SAND SHED			
DATE:	SCALE:	REVISIONS:	DWG. NO.
DRAWN BY:	AS NOTED	3-24-94 V.B.	
APPROVED BY:			
OF			

