

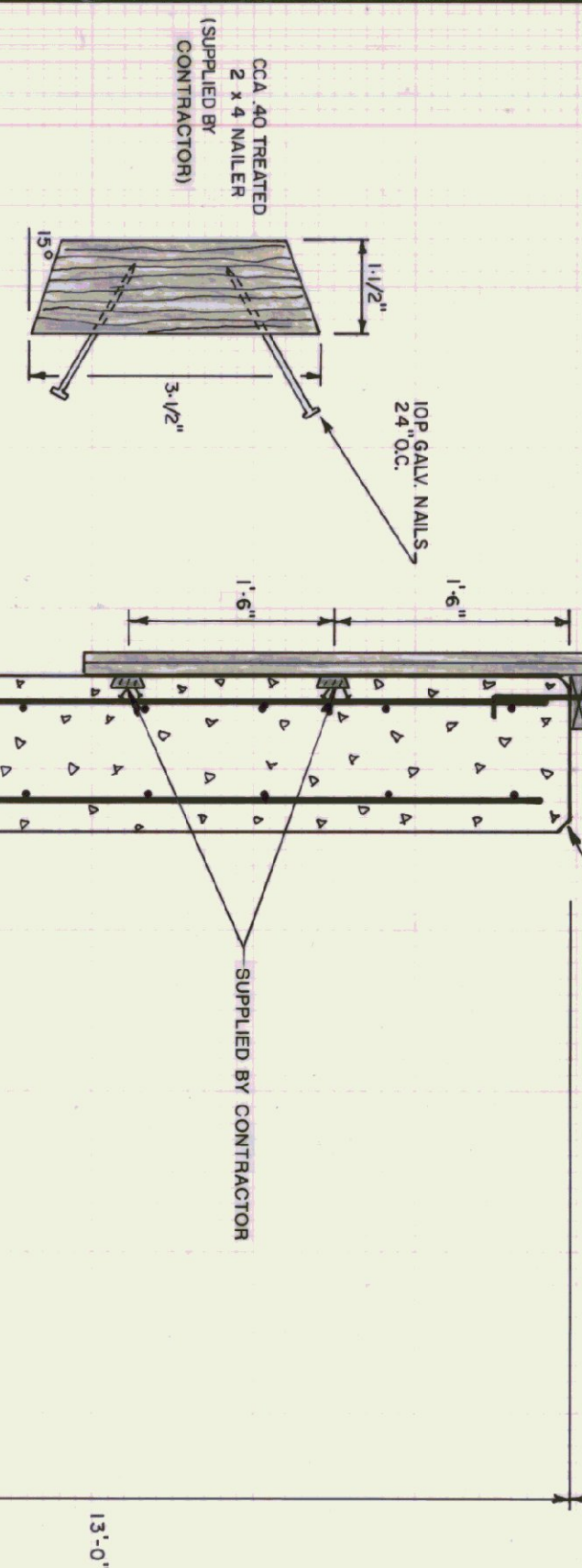
- TRUSS NOTES**
- TRUSS MANUFACTURER TO PROVIDE THE DEPT OF STATE BUILDINGS ENGINEER A SET OF ENGINEERED & STAMPED DRAWINGS FOR APPROVAL PRIOR TO TRUSS MANUFACTURE.
  - TRUSS MANUFACTURER TO PROVIDE THE CONTRACTOR WITH ALL NECESSARY INSTRUCTIONS FOR PROPER TRUSS INSTALLATION, ANCHORAGE, BRACING, LIFTING, ETC.
  - TRUSS DESIGN LOADS IN ACCORDANCE WITH THE 1987 BOCA FOR VERMONT MINIMUM LOADS.
  - LIVE - PER 1987 BOCA, FOR VT. (50 PSF MIN.)
  - DEAD - AS CALCULATED FROM TRUSS & ROOF MATERIALS
  - WIND - 25 P.S.F. BOTTOM CHORD
  - DIAGONAL WIND BRACING PER TRUSS MANUFACTURER

**LUMBER NOTES**

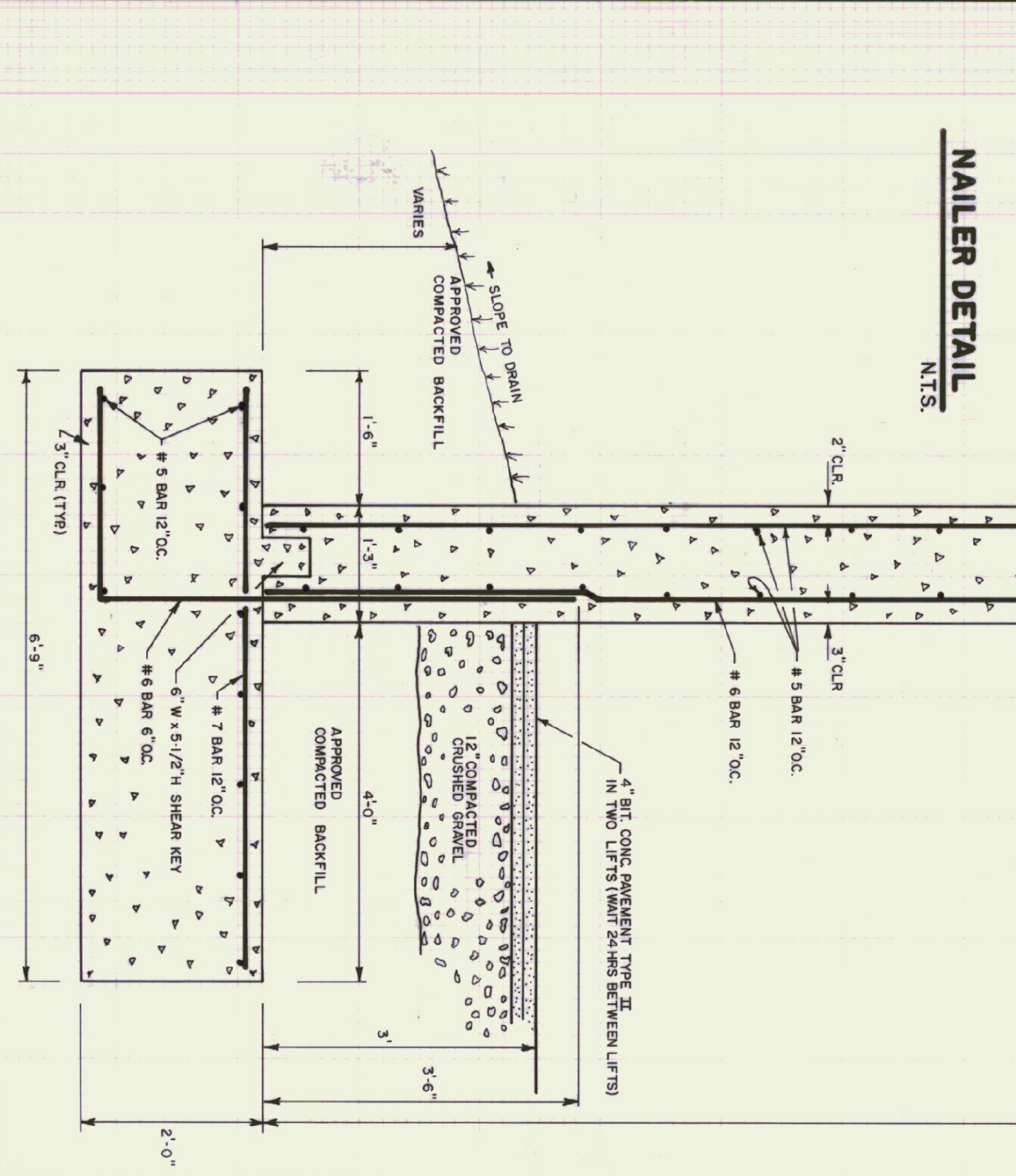
- ALL LUMBER NOT INDICATED AS SUPPLIED BY OWNER IS THE RESPONSIBILITY OF THE CONTRACTOR
- PLIES AND ANALYSIS IN CONTACT WITH CONCRETE
- BOARD AND BATTEN SIDING TO BE FINISHED WITH 3\"/>
- BOARD AND BATTEN SIDING TO BE FINISHED WITH 1/2\"/>
- BOARD SIDING AND BATTEN STRIPS TO BE FULL LENGTH WITH NO HORIZONTAL JOINTS
- ALL WALLS TO BE GALVANIZED

**FINISH NOTES**

- ALL ROOFS AND BATTENS TO BE STAINED WITH ONE COAT ON ALL SIDES PRIOR TO INSTALLATION
- AFTER INSTALLATION, EXTERIOR SIDING TO RECEIVE ONE ADDITIONAL COAT OF STAIN
- STAIN TO BE OLIVIANIC OIL BASE SEMI TRANSPARENT OXFORD BROWN # 713



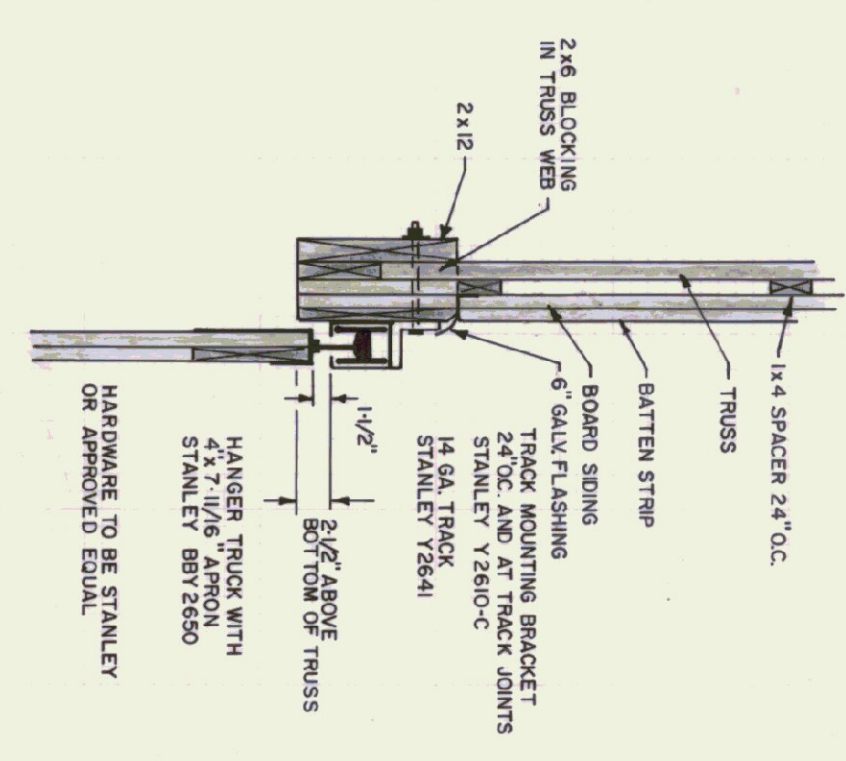
**NAILER DETAIL**  
N.T.S.



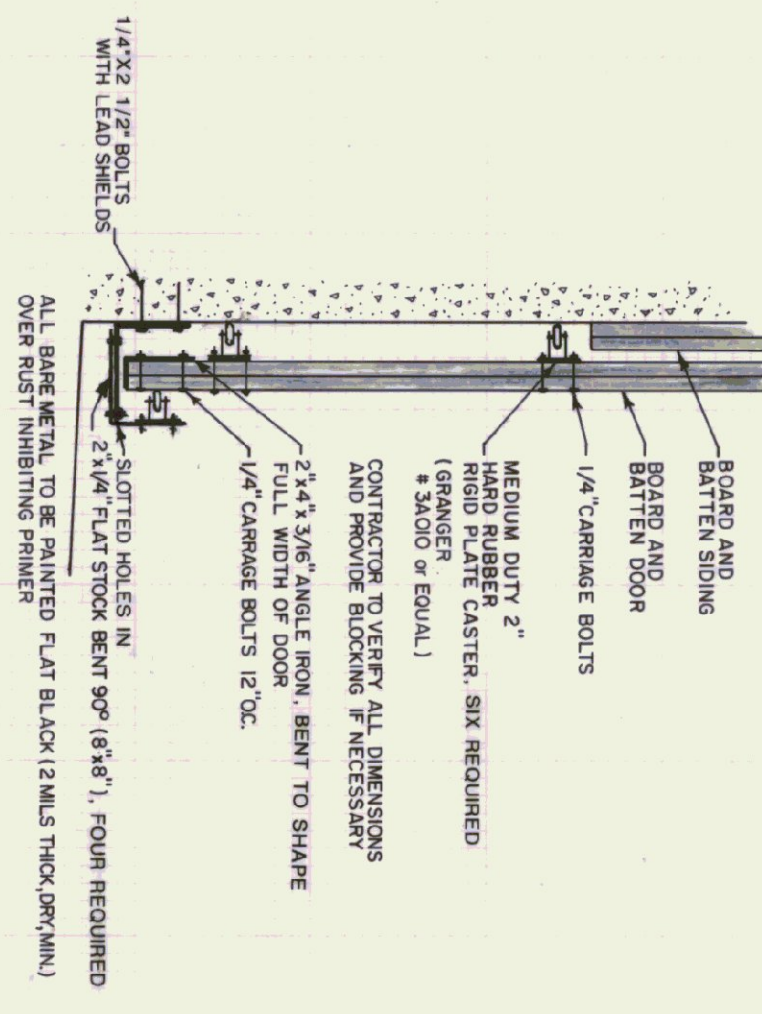
**TYPICAL WALL SECTION**  
3/4\"/>

**NOTE:**

ALL 2x6 AND 2x8 FRAMING LUMBER AND BOARD AND BATTEN SIDING WILL BE ROUGH SAWN AND SUPPLIED BY OWNERS (STATE OF VERMONT) CONTRACTOR TO SUPPLY ALL OTHER MATERIAL INCLUDING BOARD AND BATTEN FOR DOORS

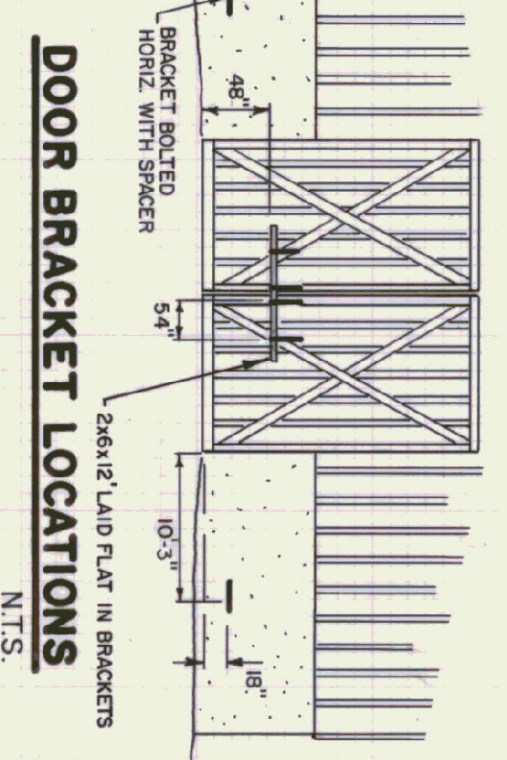


**TRACK MOUNT DETAIL**  
N.T.S.



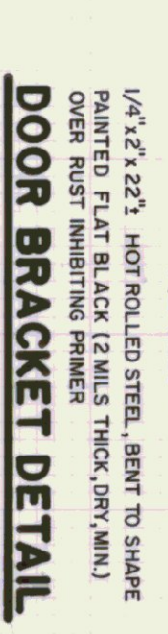
**DOOR GUIDE DETAIL**  
N.T.S.

- CONCRETE NOTES**
- ALL CONCRETE TO BE 3000 P.S.I. AT 28 DAYS WITH MINIMUM SLAB 4\"/>
  - EXPOSED WALLS TO BE DRESS FINISH
  - 1/2\"/>
  - 3/4\"/>
  - L-IRON CAST INTO WALL CORNERS AT DOOR OPENINGS
  - REBAR TO BE CONTINUOUS THROUGH CONST. JOINTS
  - NO HORIZONTAL CONST. JOINTS IN WALLS, CONTINUOUS POUR
  - NO CORNER OR EYE JOINTS REQUIRED IN FOOTINGS
  - ALL REBAR TO BE GRADE 60
  - CONTRACTOR TO LEAVE NO METAL WITHIN 1\"/>
  - USE DIRT PLASTIC COMES AT ALL JOINTS AND FILL ALL THE HOLES WITH AN APPROVED FOAM SHIM (3\"/>
  - REBAR TO BE STOKED ON BLOCKING 4\"/>
  - CONCRETE SUPPLIER TO PROVIDE TEST CYLINDERS FOR TESTING BY OWNER
  - CONCRETE SUPPLIER TO CONDUCT ON SITE AIR TESTS

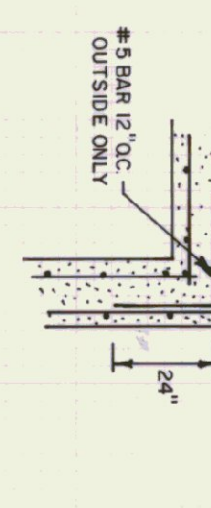


**DOOR BRACKET LOCATIONS**  
N.T.S.

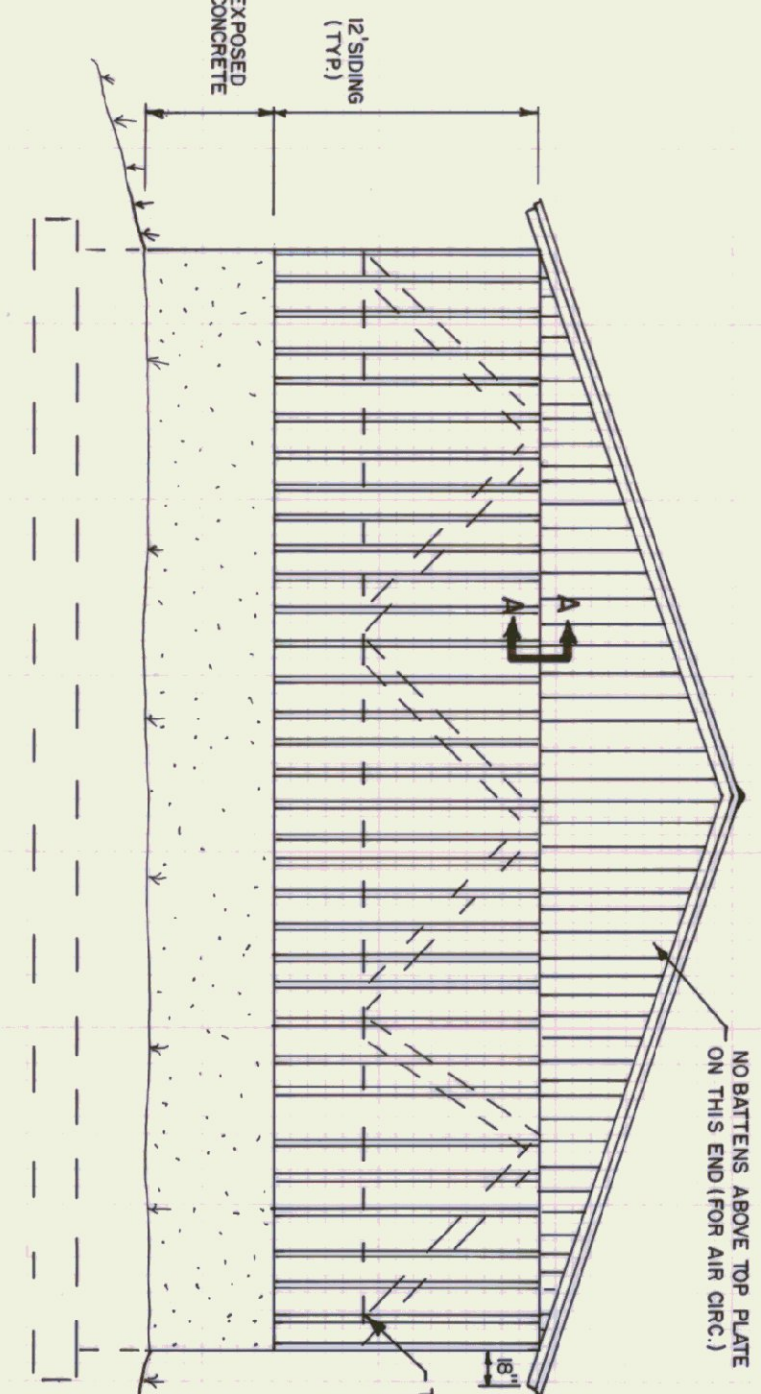
- 1/4\"/>
- 1/4\"/>
- 1/4\"/>
- 1/4\"/>
- 1/4\"/>
- 1/4\"/>
- SIX BRACKETS
- OVER RUST INHIBITING PRIMER



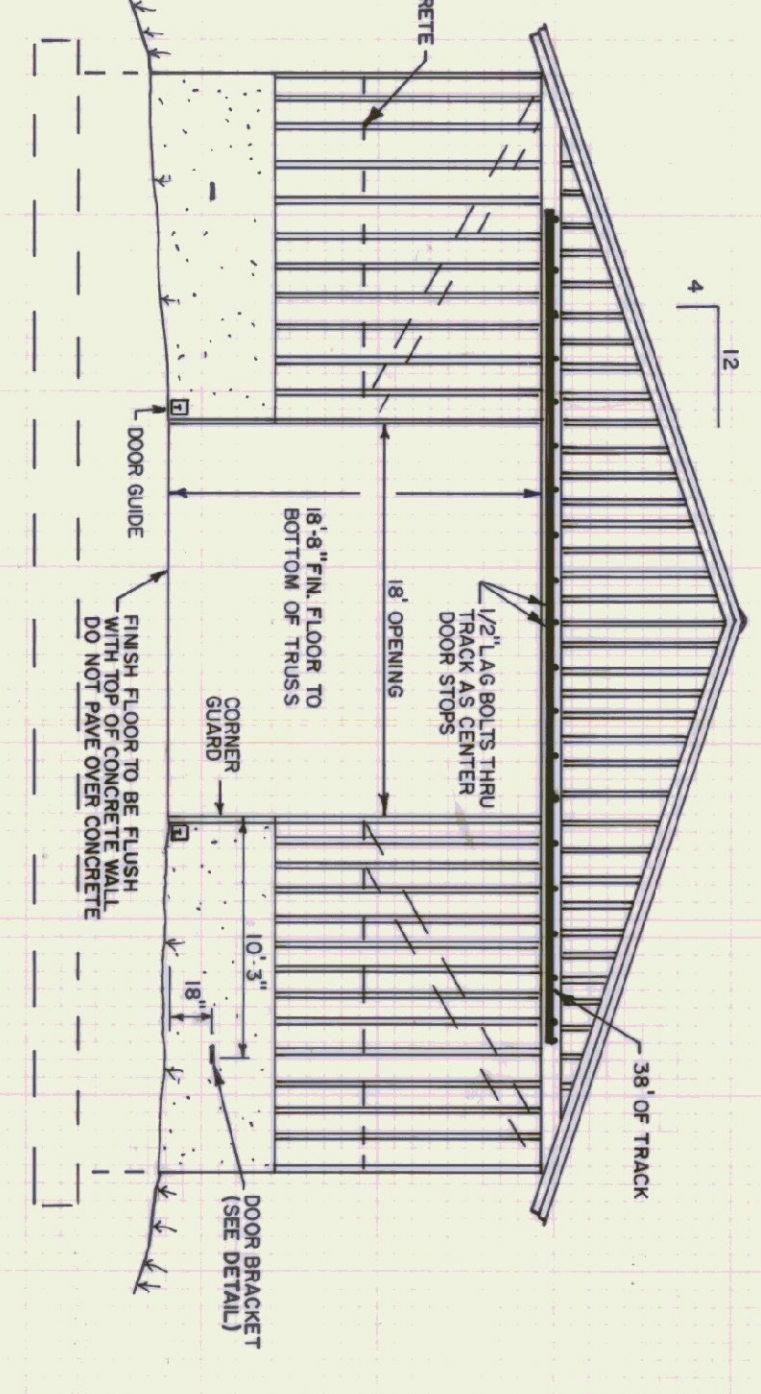
**DOOR BRACKET DETAIL**  
N.T.S.



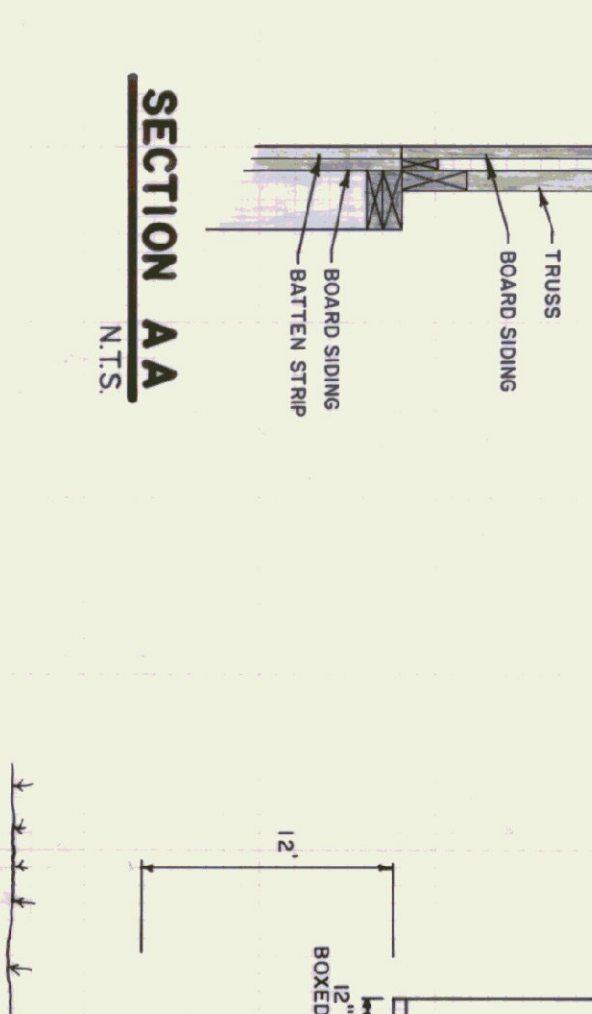
**CORNER DETAIL**  
N.T.S.



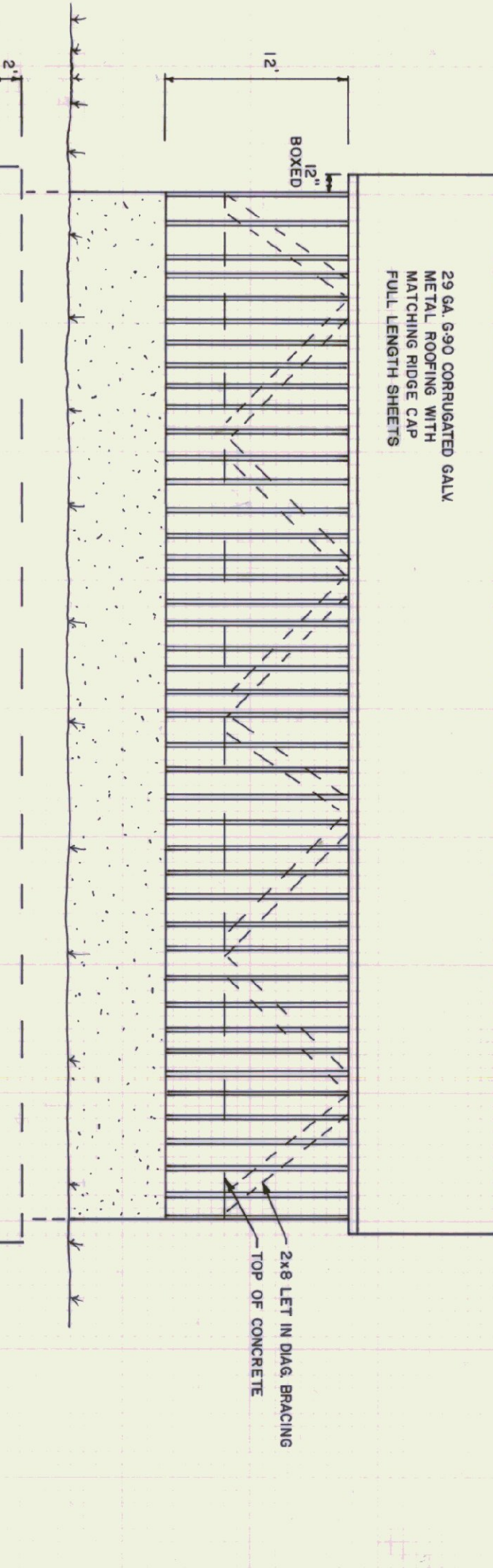
**BACK ELEVATION**  
1/8\"/>



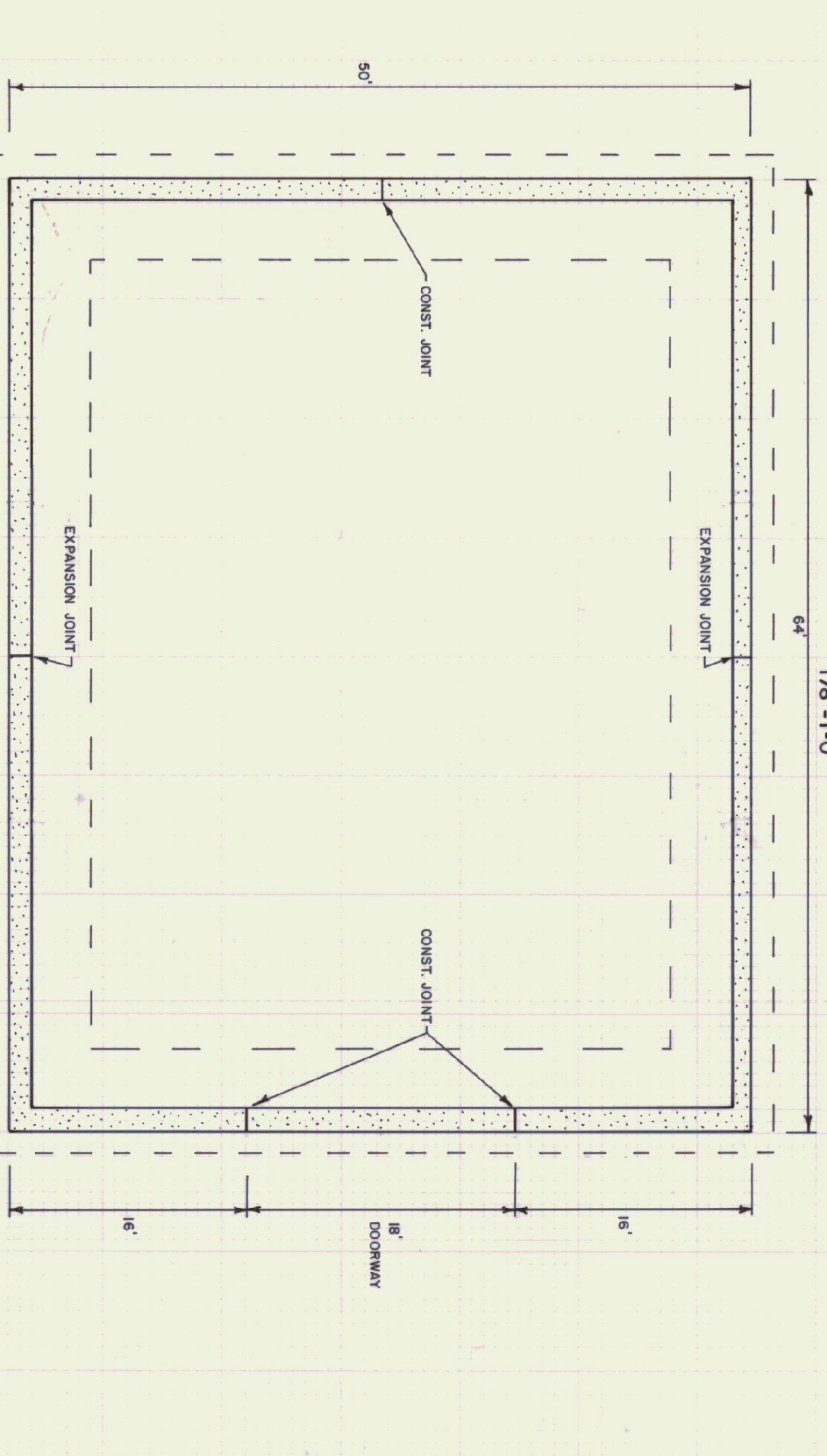
**FRONT ELEVATION**  
1/8\"/>



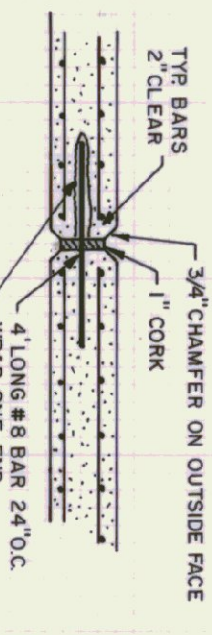
**SECTION AA**  
N.T.S.



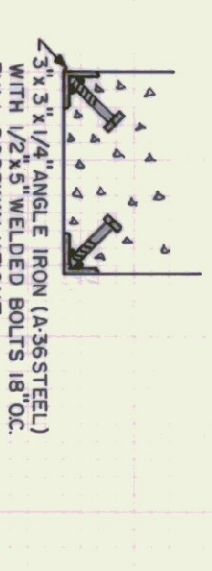
**SIDE ELEVATION**  
1/8\"/>



**FOUNDATION PLAN**  
1/8\"/>



**EXPANSION JOINT DETAIL**  
N.T.S.



**CORNER GUARD**  
N.T.S.

STATE OF VERMONT			
DEPARTMENT OF STATE BUILDINGS			
AGENCY OF ADMINISTRATION			
MONTPELIER, VERMONT			
50' x 64'			
SALT/SAND SHED			
MENDON, VERMONT			
DATE:	SCALE:	REVISIONS:	DWG. NO.
DRAWN BY:	AS NOTED	3-24-94	V.B.
APPROVED BY:			

MASTER