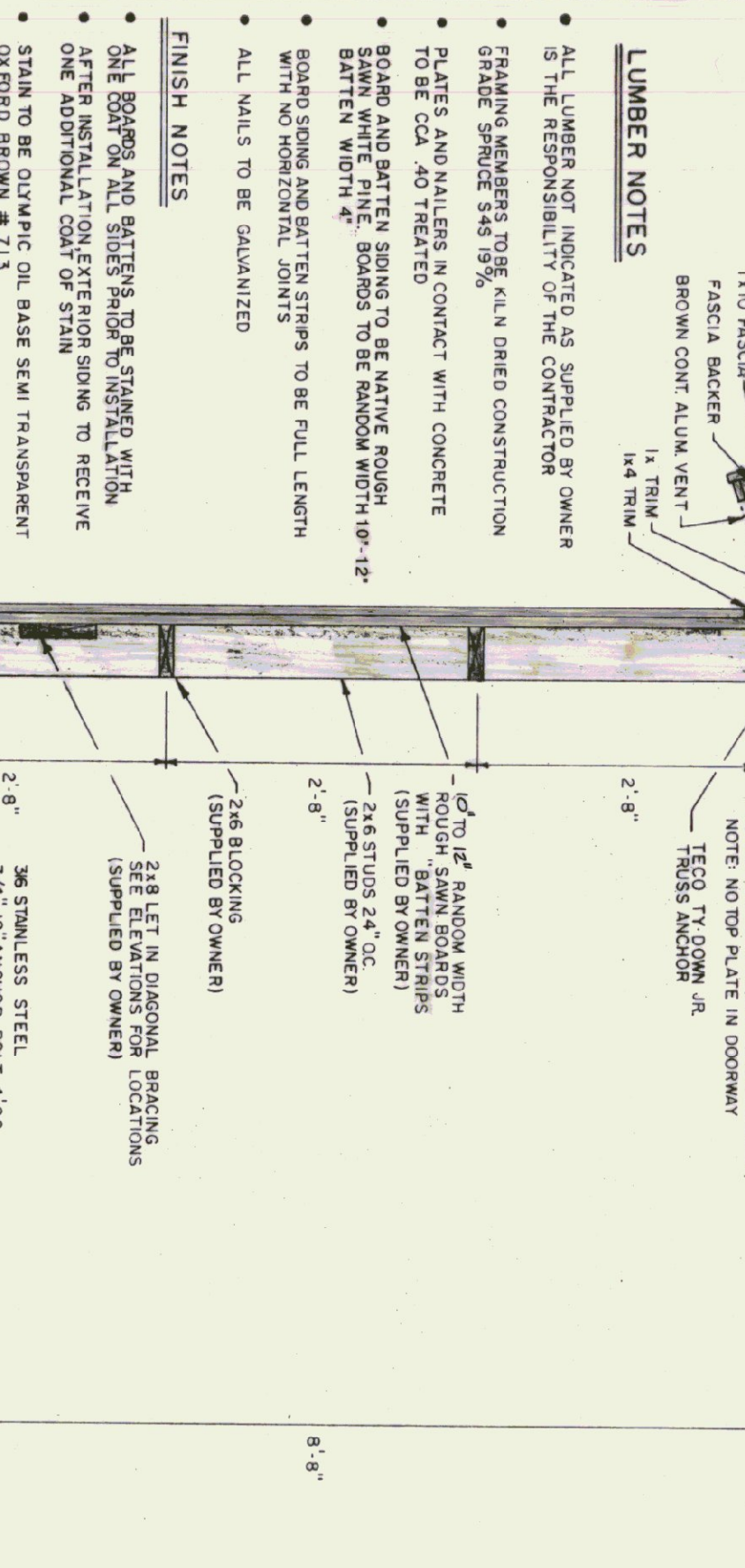


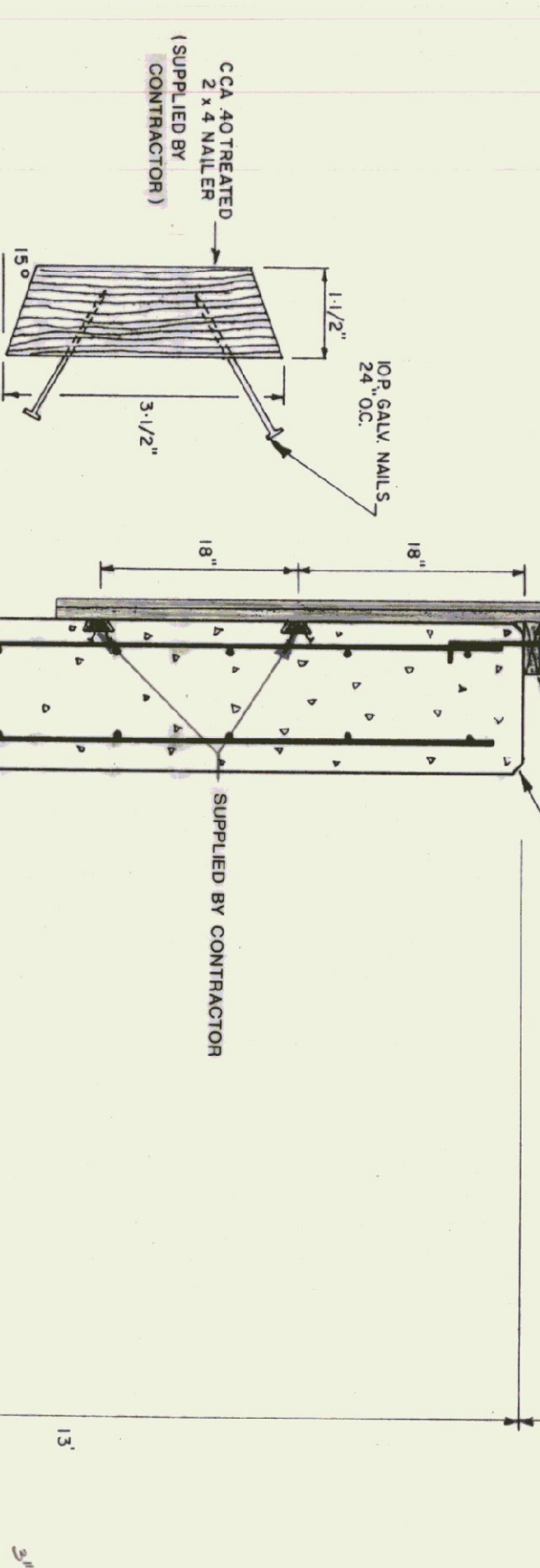
LUMBER NOTES

- ALL LUMBER NOT INDICATED AS SUPPLIED BY OWNER IS THE RESPONSIBILITY OF THE CONTRACTOR
- FRAMING MEMBERS TO BE KILN DRIED CONSTRUCTION GRADE SPECIES S4S 19% MOISTURE
- PLATES AND UNLERS IN CONTACT WITH CONCRETE TO BE CCA TREATED
- BOARD AND BATTEN SIDING TO BE NATIVE POUND BOARD AND BATTEN SIDING TO BE 1/2" RADIUS ROSTER BATTEN WIDTH 4"
- BOARD SIDING AND BATTEN STRIPS TO BE FULL LENGTH WITH NO HORIZONTAL JOINTS
- ALL WALLS TO BE GALVANIZED



TRUSS NOTES

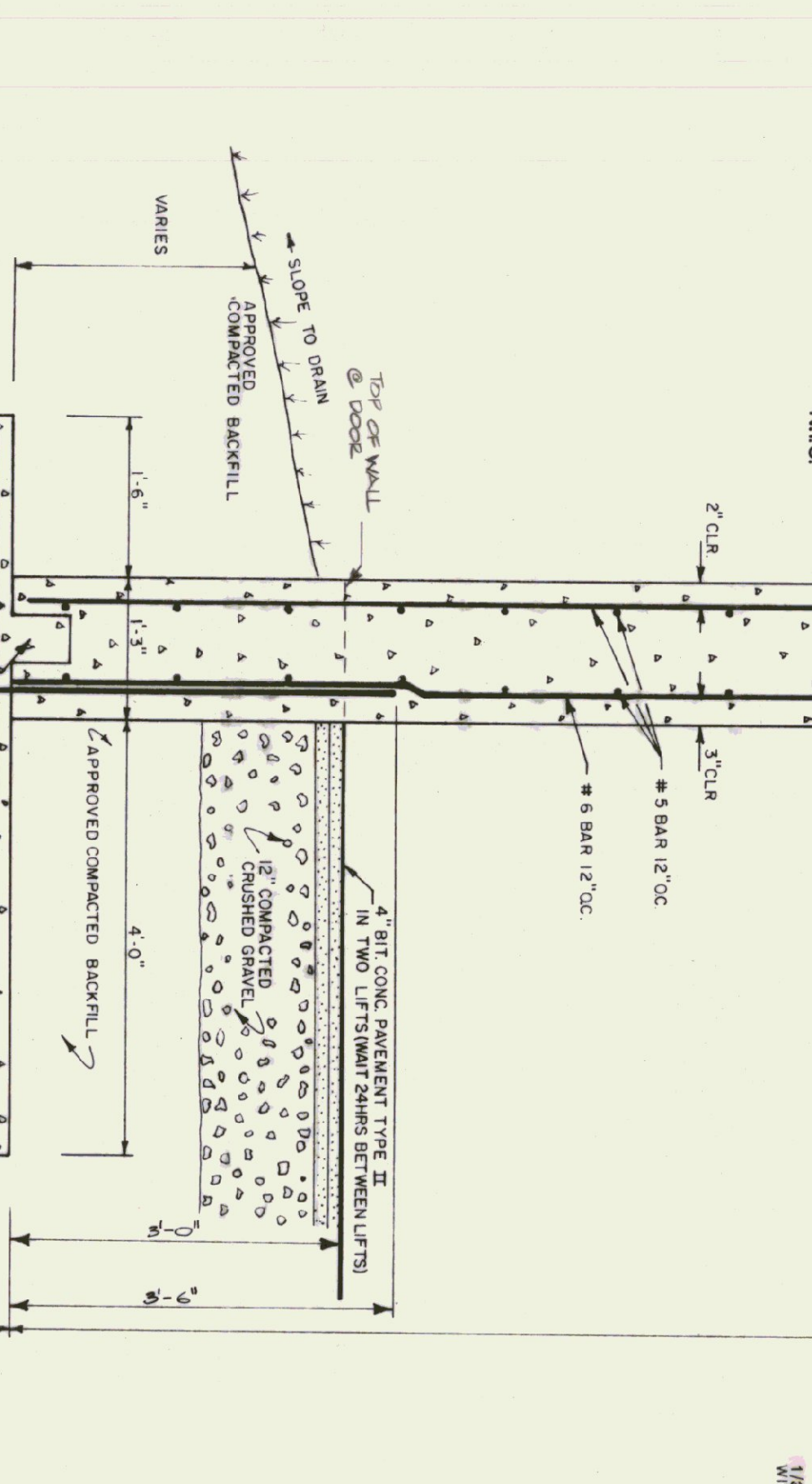
- TRUSS MANUFACTURER TO PROVIDE THE DEPT. OF STATE BUILDINGS ENGINEER A SET OF ENGINEERED AND STAMPED DRAWINGS FOR APPROVAL PRIOR TO TRUSS MANUFACTURE
- TRUSS MANUFACTURER TO PROVIDE THE CONTRACTOR WITH ALL NECESSARY INSTRUCTIONS FOR PROPER TRUSS INSTALLATION, ANCHORAGE, BRACING, LIFTING ETC.
- TRUSS DESIGN LOADS IN ACCORDANCE WITH THE 1987 BOCA 1991 VERNONT MINIMUM LOADS:
- LIVE - PER 1987 BOCA FOR VT (50 PSF MIN)
- DEAD - AS CALCULATED FROM TRUSS & ROOF MATERIALS
- WIND - 53 PSF
- DIAGONAL WIND BRACING PER TRUSS MANUFACTURER



FINISH NOTES

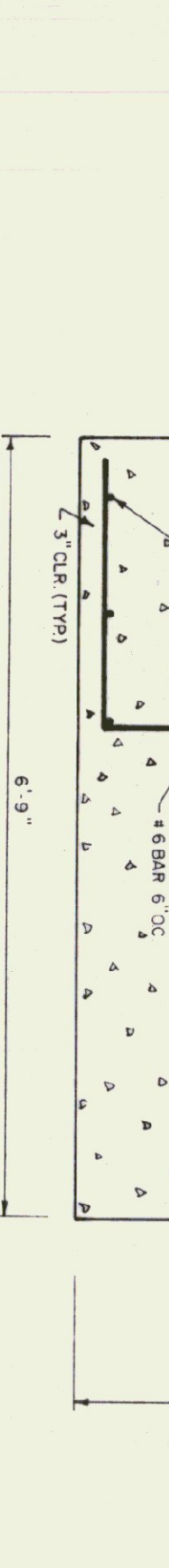
- ALL ROOFING AND BATTENS TO BE STAINED WITH ONE COAT OF ALL SIDING PRIOR TO INSTALLATION
- AFTER INSTALLATION EXTERIOR SIDING TO RECEIVE ONE ADDITIONAL COAT OF STAIN
- STAIN TO BE OLYMPIC OIL BASE SEMI TRANSPARENT OXFORD BROWN # 713

NAILER DETAIL

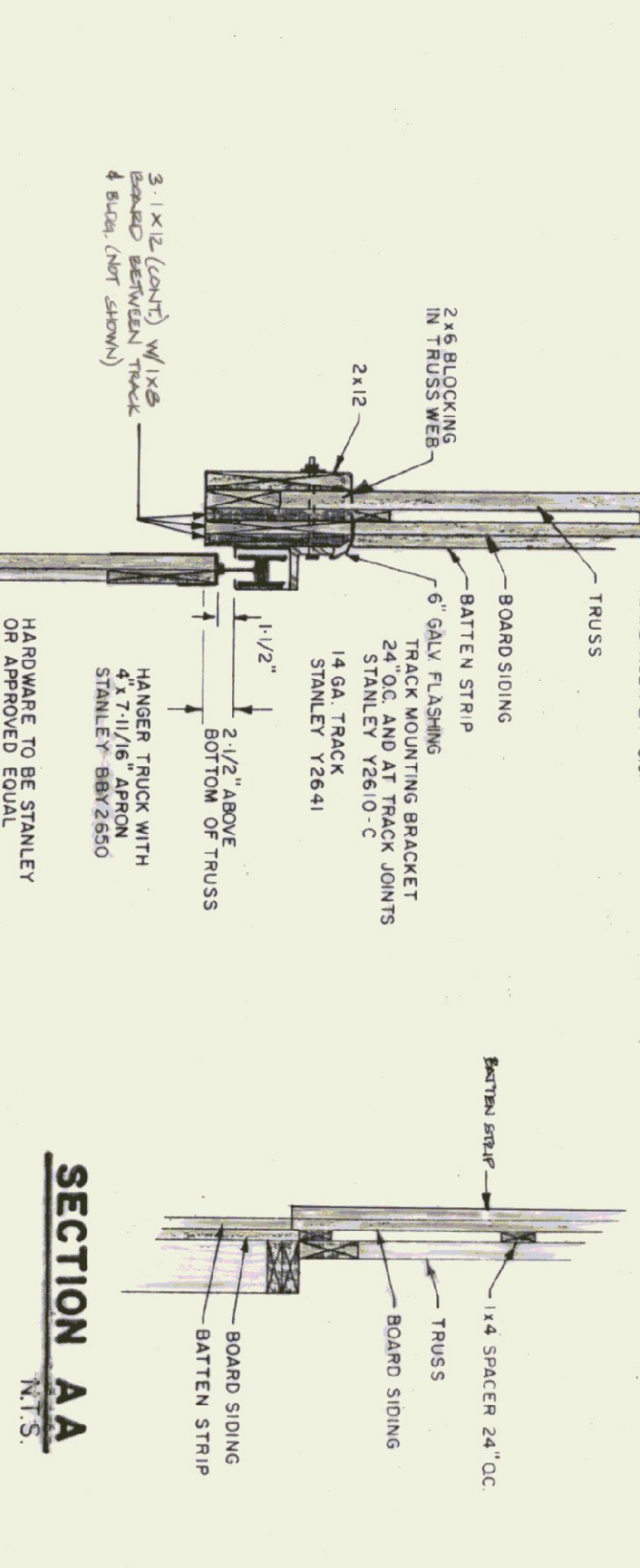
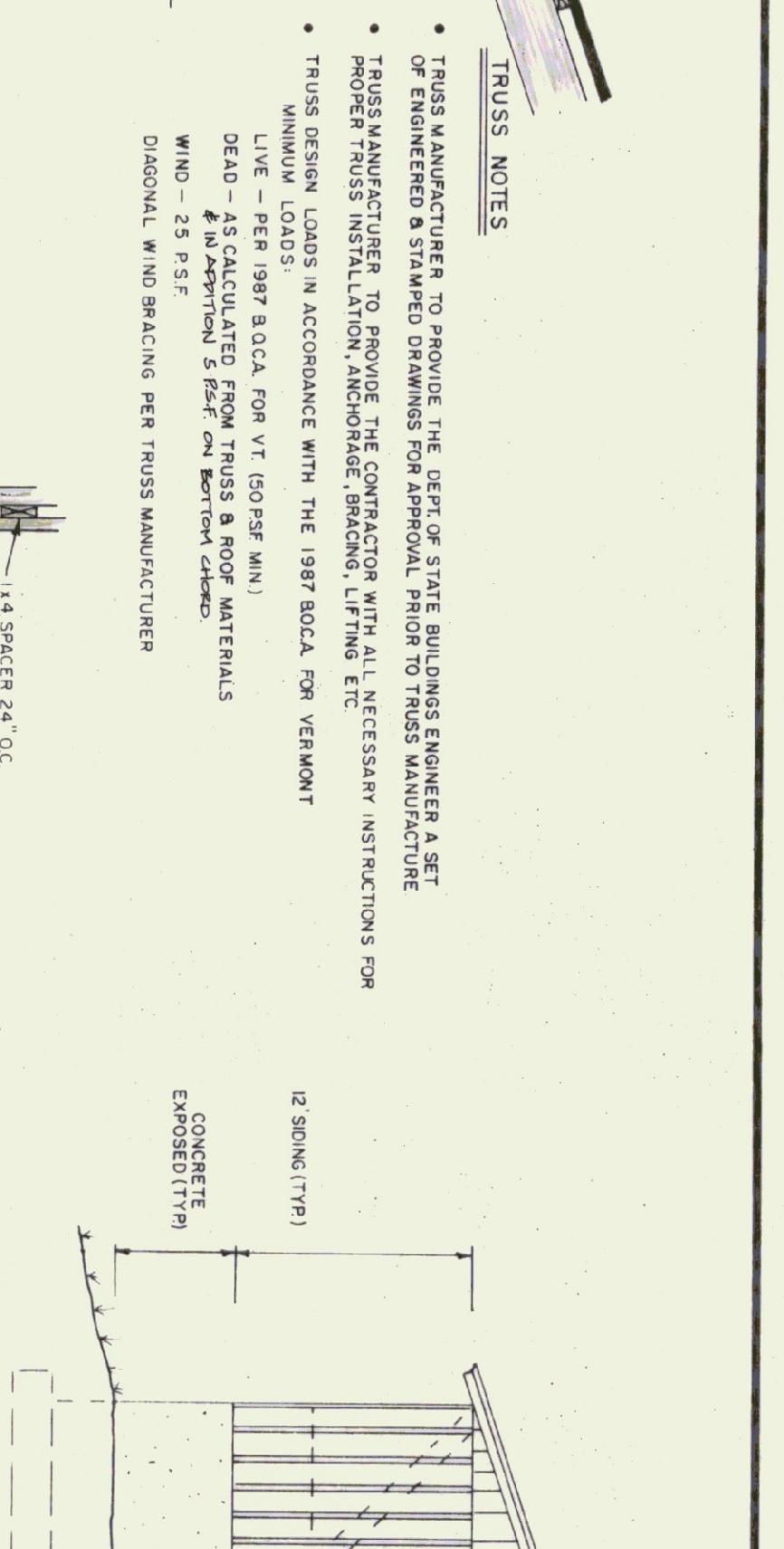


TYPICAL WALL SECTION

3/4" x 1'-0"



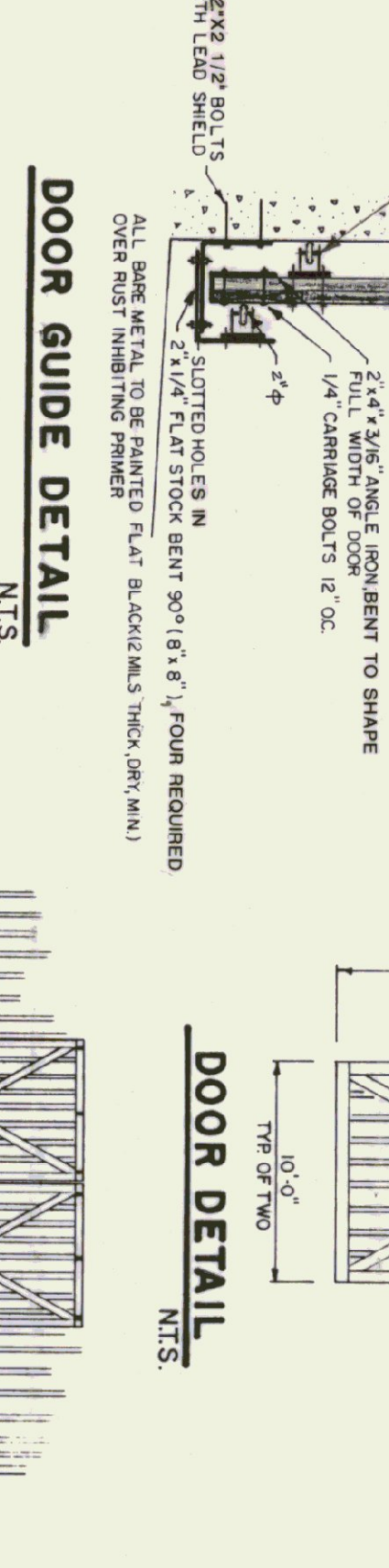
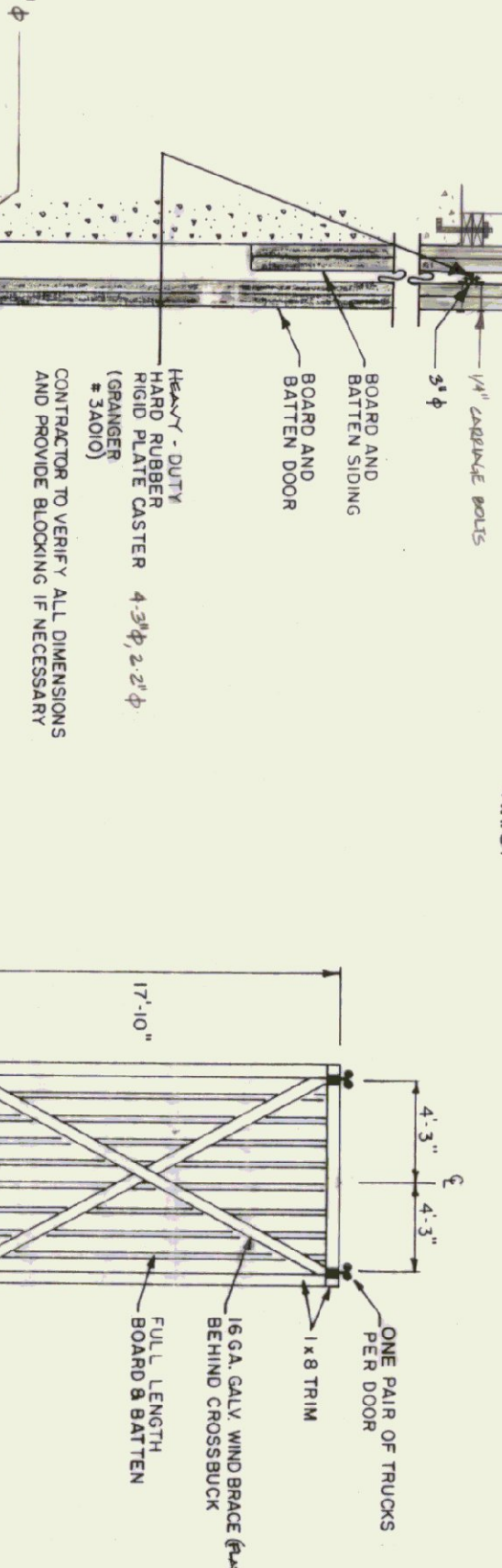
NOTE: ALL 2X6 AND 2X8 FRAMING LUMBER AND BOARD AND BATTEN SIDING WILL BE ROUGH SAWN AND SUPPLIED BY OWNER. (STATE OF VERMONT) CONTRACTOR TO SUPPLY ALL OTHER MATERIAL INCLUDING BOARD AND BATTEN FOR DOORS



CONCRETE NOTES

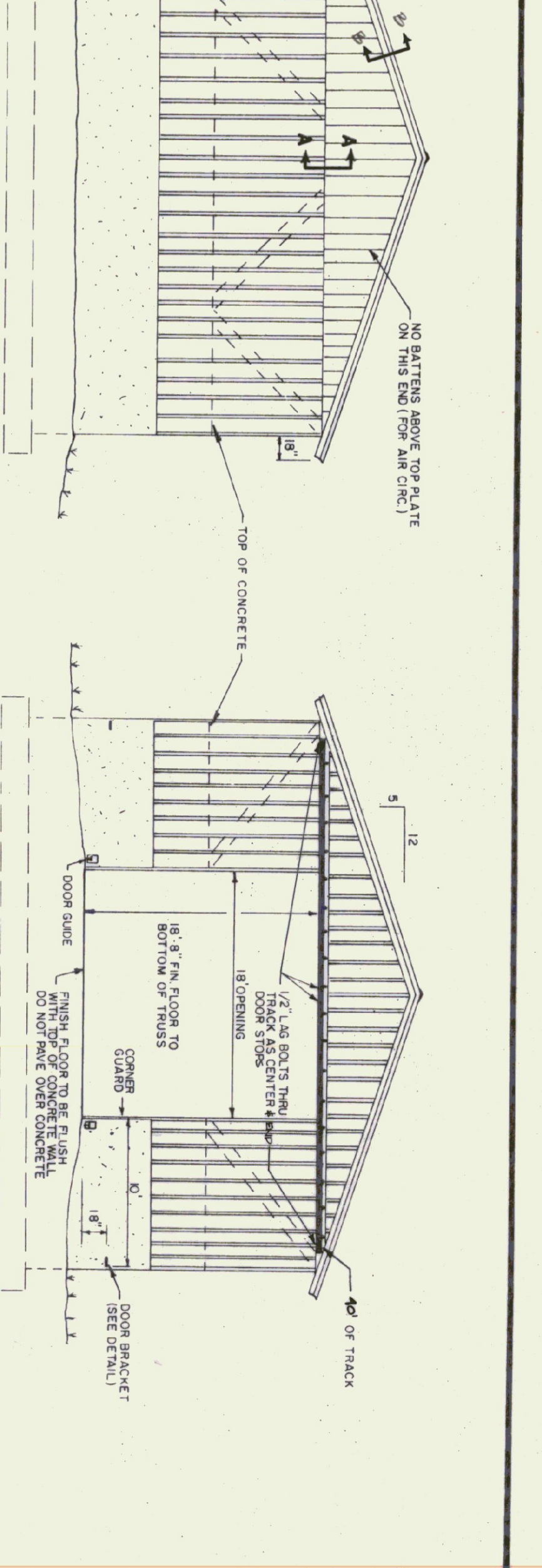
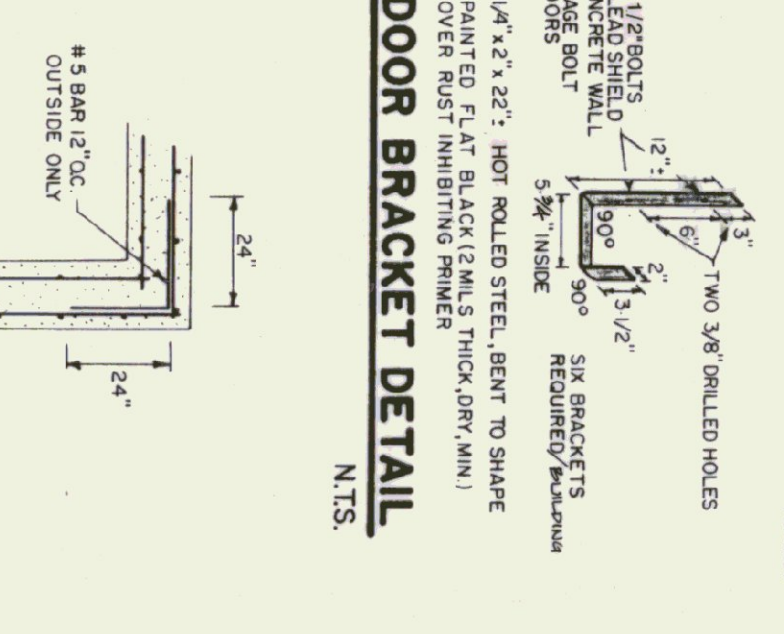
- ALL CONCRETE TO BE 3500 PSI AT 28 DAYS WITH MAXIMUM SLUMP OF 4"
- EXPOSED WALLS TO BE DRESS FINISHED PER DOT SPEC.
- 1/2" V-JOINTS IN EXPOSED FACE OF CONCT JOINTS.
- 3/4" CHAMFER ON EACH FACE OF EXPANSION JOINTS
- L-IRON CAST INTO WALL CORNERS AT DOOR OPENINGS.
- RE BAR TO BE CONTINUOUS THROUGH CONCT JOINTS
- NO HORIZONTAL CONCT JOINTS IN WALLS, CONTINUOUS FOUR
- NO CONCT OR EXP JOINTS REQUIRED IN FOOTINGS.
- ALL RE BAR TO BE GRADE 60.
- CONTRACTOR TO LEAVE NO METAL WITHIN 1" OF SURFACE USE 1" DEEP PLASTIC CONES AT ALL TIES AND PLUG ALL THE HOLES WITH AN APPROVED NON-SHINKING GROUT.
- RE BAR TO BE STORED ON BLOCKING 4" MIN ABOVE GROUND
- CONCRETE SUPPLIER TO PROVIDE TEST CYLINDERS FOR TESTING BY OWNER
- CONCRETE SUPPLIER TO CONDUCT ON SITE AIR TESTS
- 6-0% AIR ENTRAINMENT

TRACK MOUNT DETAIL



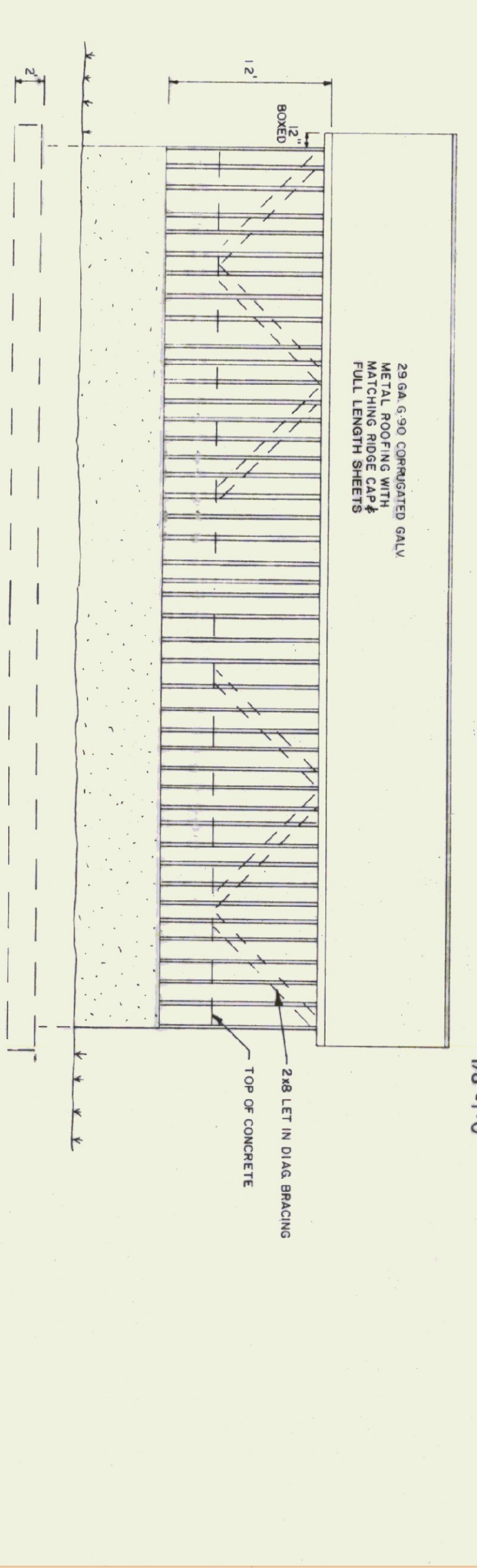
DOOR GUIDE DETAIL

CORNER DETAIL

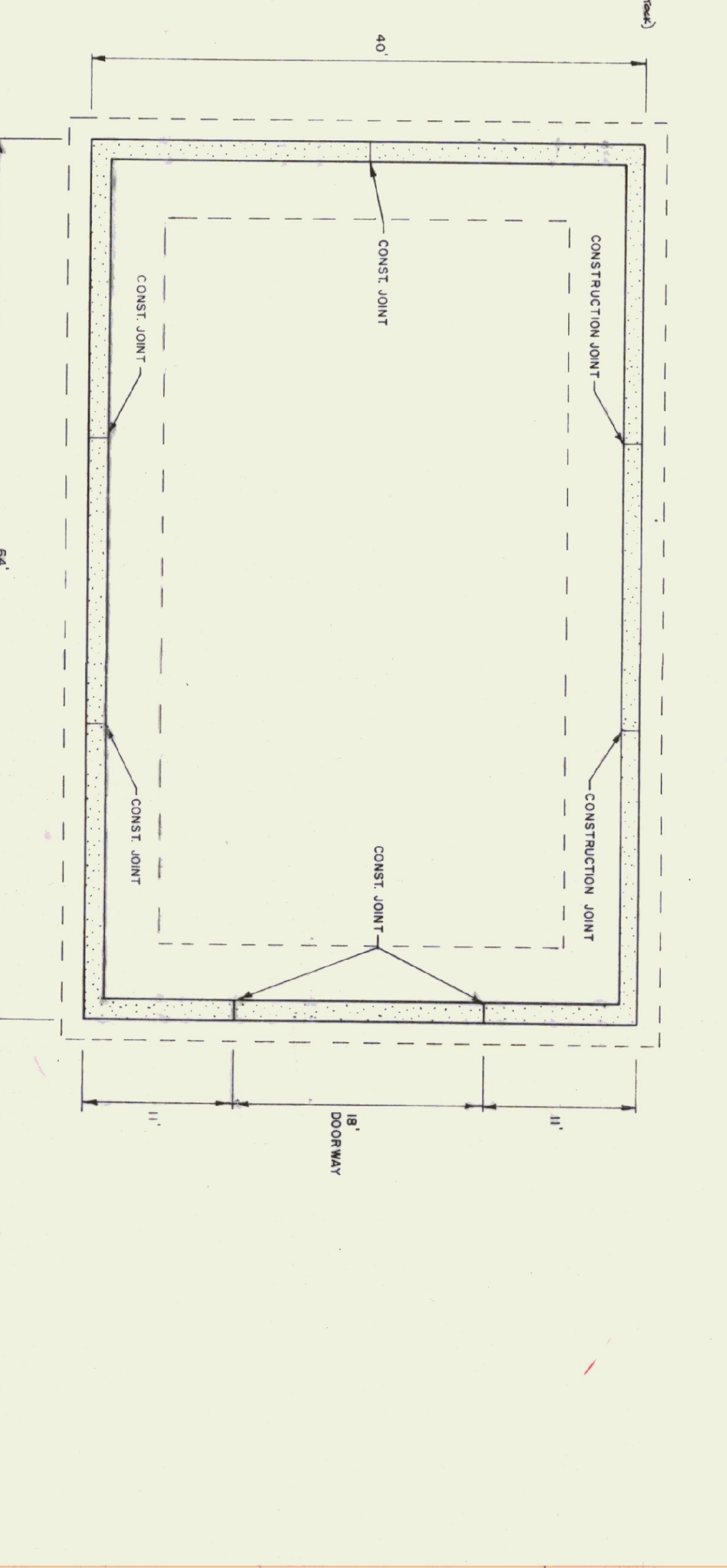


BACK ELEVATION

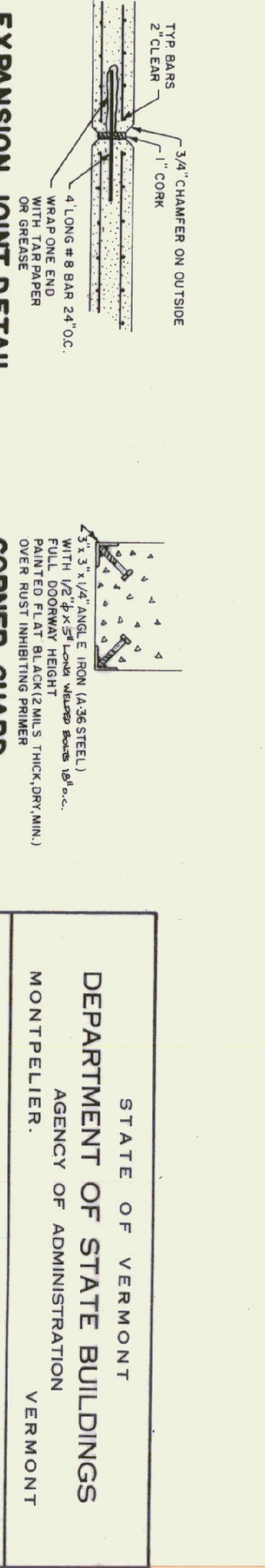
FRONT ELEVATION



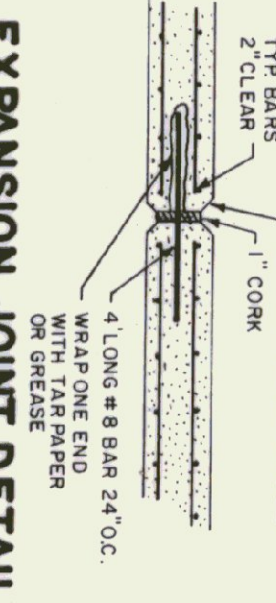
SIDE ELEVATION



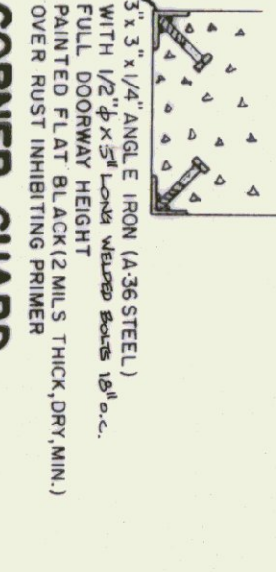
FOUNDATION PLAN



EXPANSION JOINT DETAIL



CORNER GUARD



STATE OF VERMONT
DEPARTMENT OF STATE BUILDINGS
AGENCY OF ADMINISTRATION
VERMONT
MONTPELLIER

40' X 64' SALT / SAND SHED

DATE:	SCALE:	REVISIONS:	DWG. NO.
DRAWN BY:	AS NOTED	3-24-94 V.B.	
APPROVED BY:			