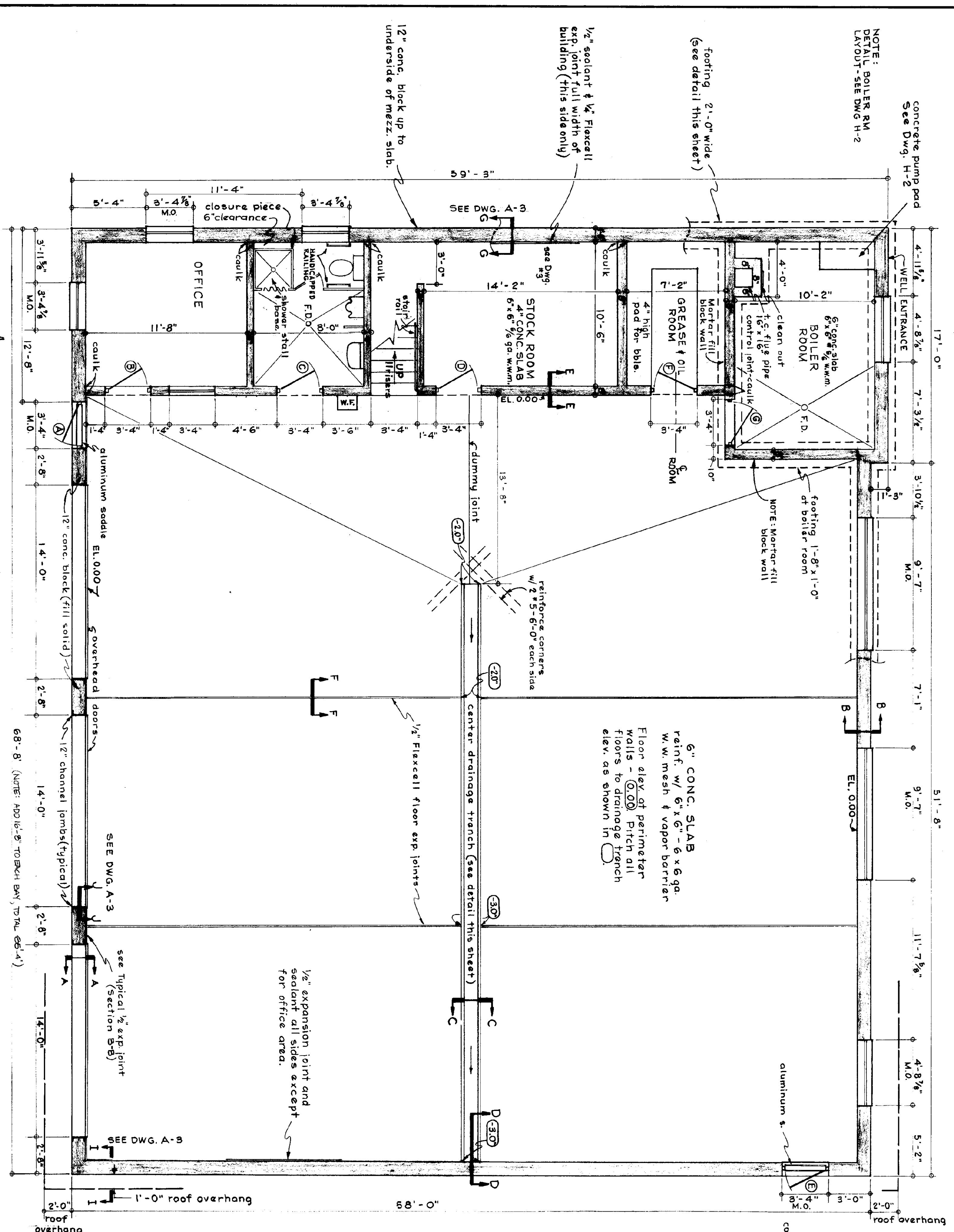
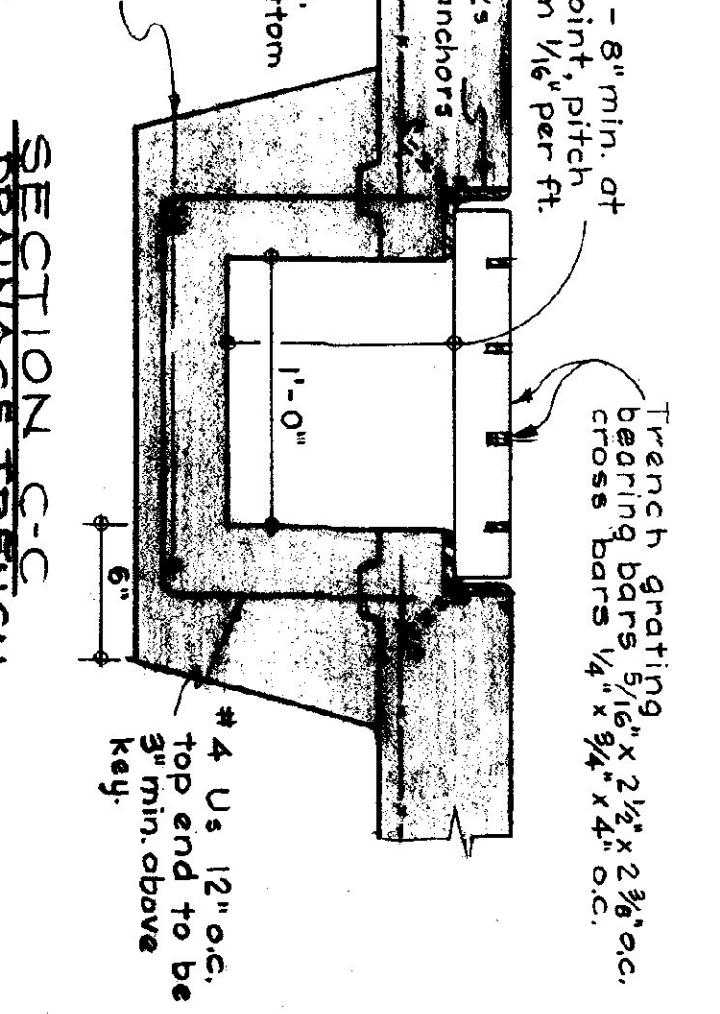
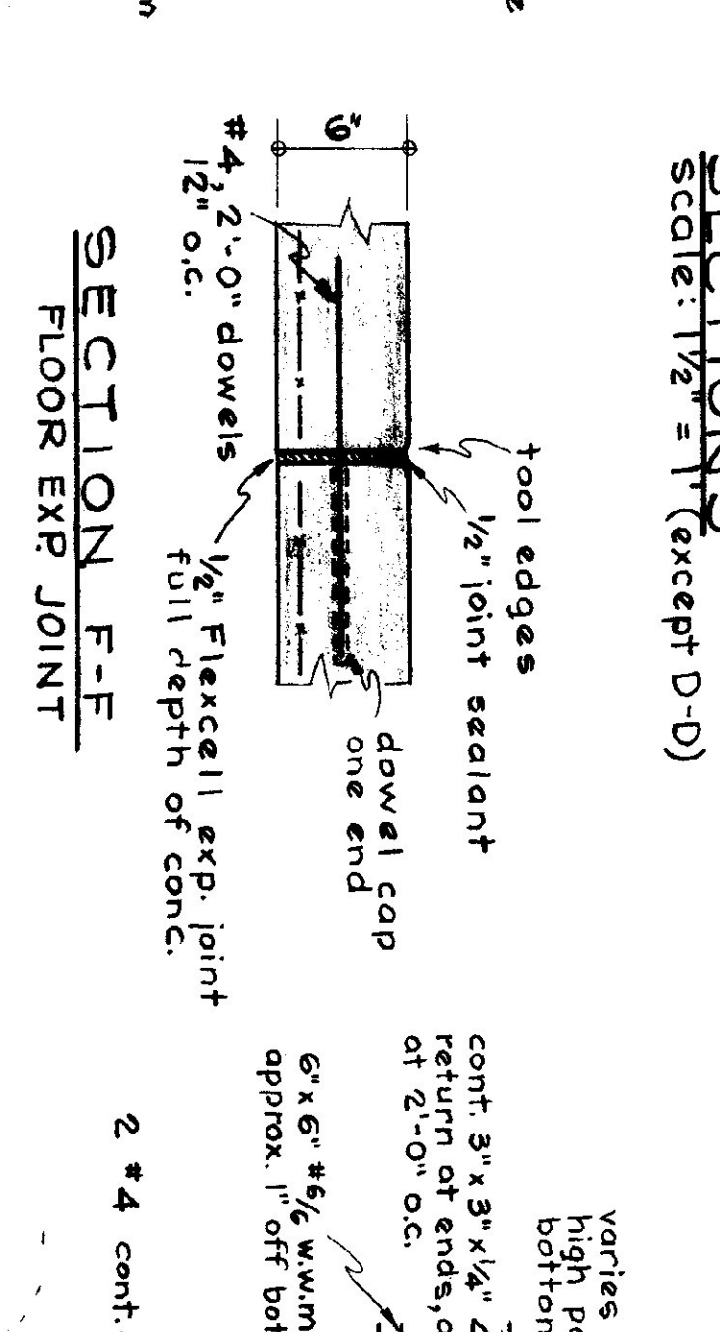
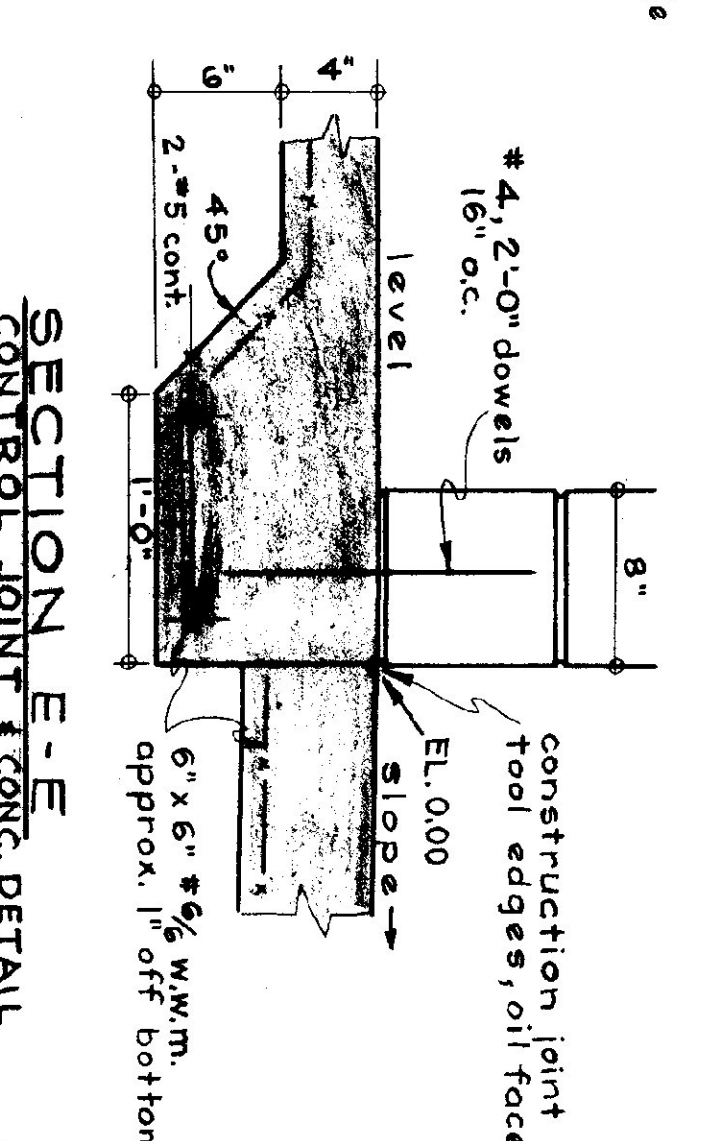
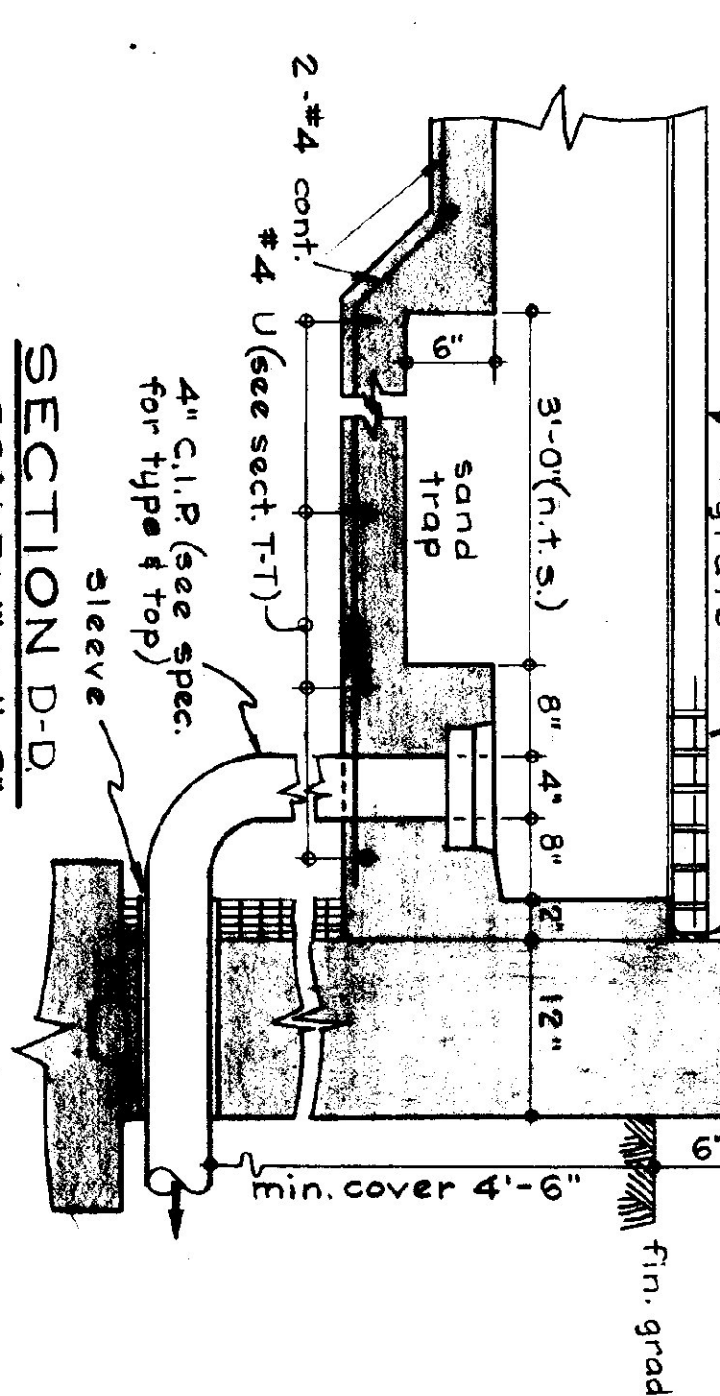


NOTE:
DETAIL BOILER RM
LAYOUT-SEE DWG H-2

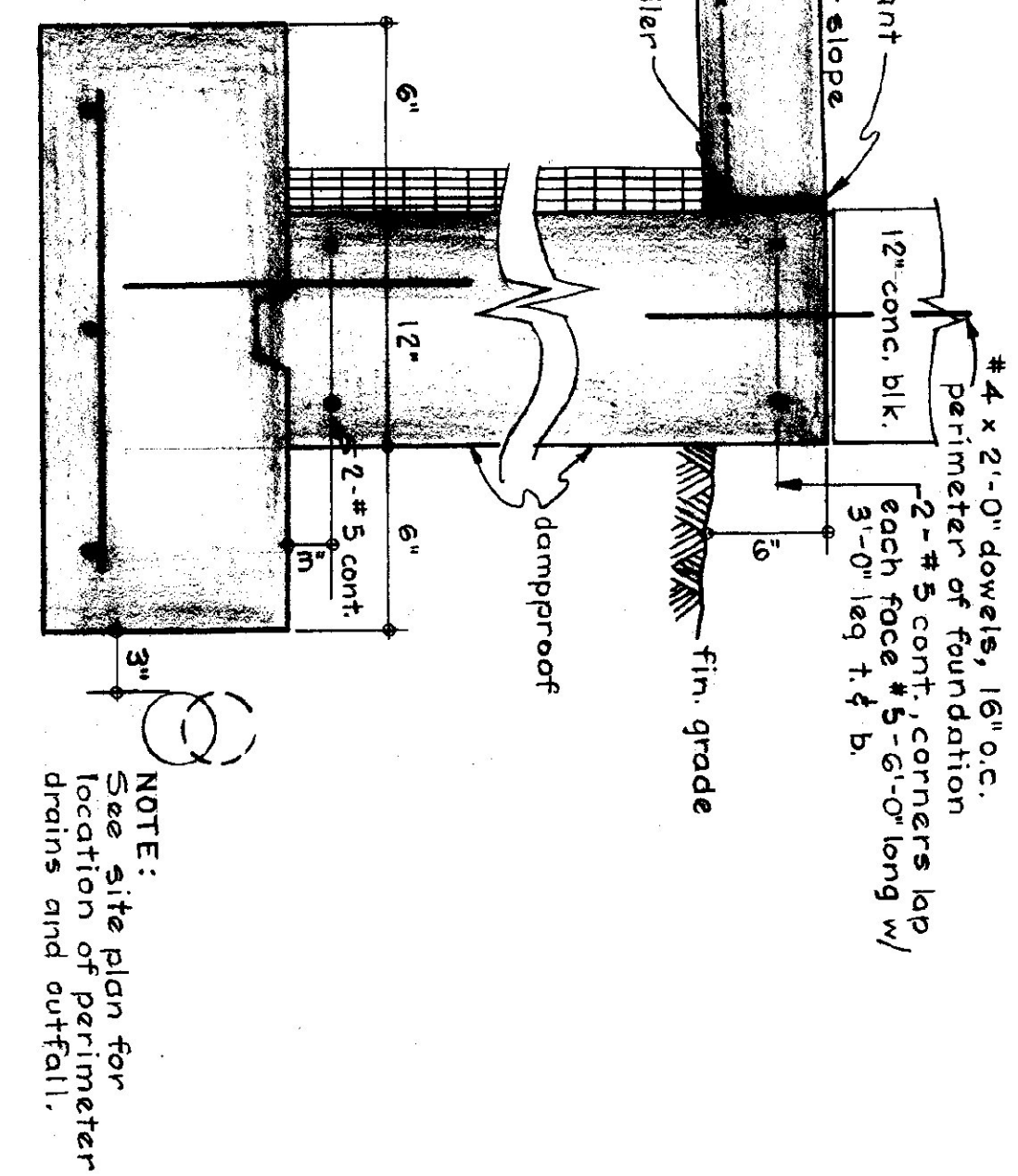


PLAN
SCALE: 1/4" = 1'-0"



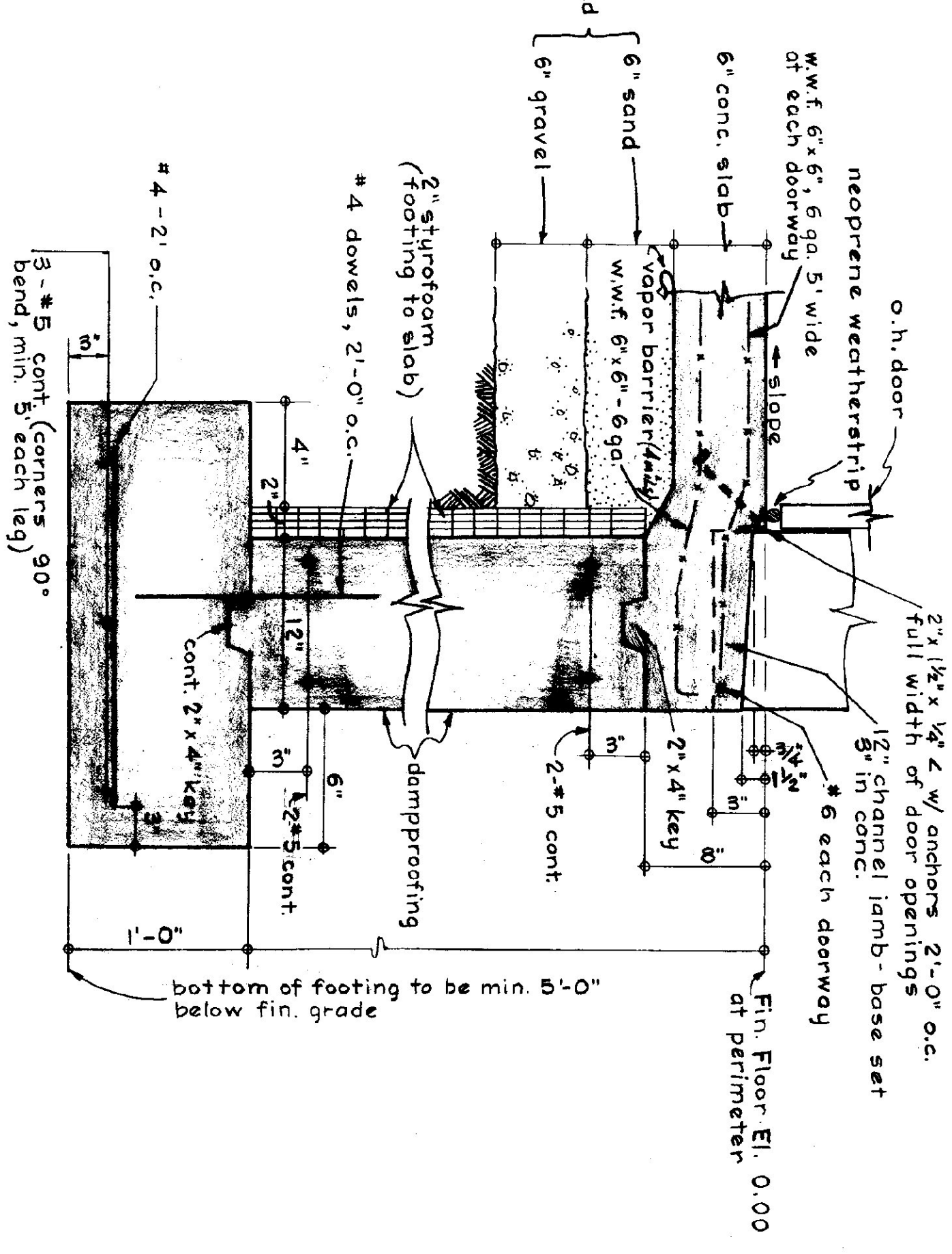
- GENERAL NOTES:**
1. All concrete shall be 3000 PSI. at 28 days - max. slump of 4"
 2. All exposed concrete walls shall be rubbed.
 3. Construction joints for walls to have 1/2" V-joint in exposed face.
 4. All concrete to be cured, 5/8" to be covered with Sisalcraft & edges tamped.
 5. Expansion joints to have tooled edges.

SECTION B-B
TYPICAL FOUNDATION FOR ALL SIDES OF BLDG. EXCEPT AT DOORS (SEE ABOVE FOR OTHER INFORMATION)



NOTE:
See site plan for location of perimeter drains and outfall.

SECTION A-A
TYPICAL AT OVERHEAD DOORS



INITIALS	DATE	REVISIONS

STATE OF VERMONT
DIVISION OF STATE BUILDINGS
AGENCY OF ADMINISTRATION
MONTPELIER, VERMONT

STANDARD
3 BAY HIGHWAY GARAGE BUILDING

DESIGNED BY: AUG 4 1975
DRAWN BY: S. MILLER
CHECKED BY: J. U.S.
APPROVED BY: S. MILLER

FLOOR PLAN & FOUNDATION DETAILS
SCALE: 1/4" = 1'-0"