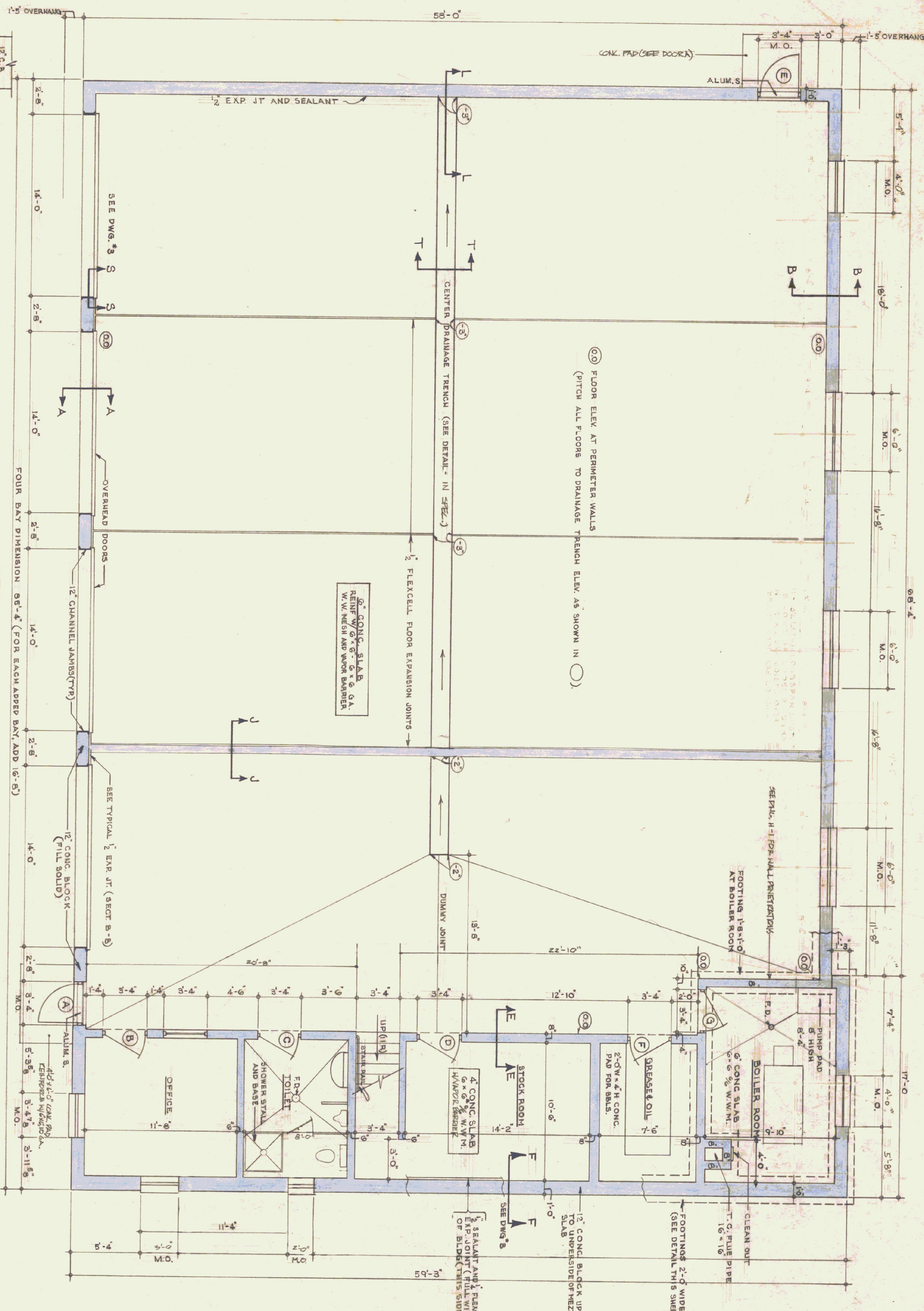
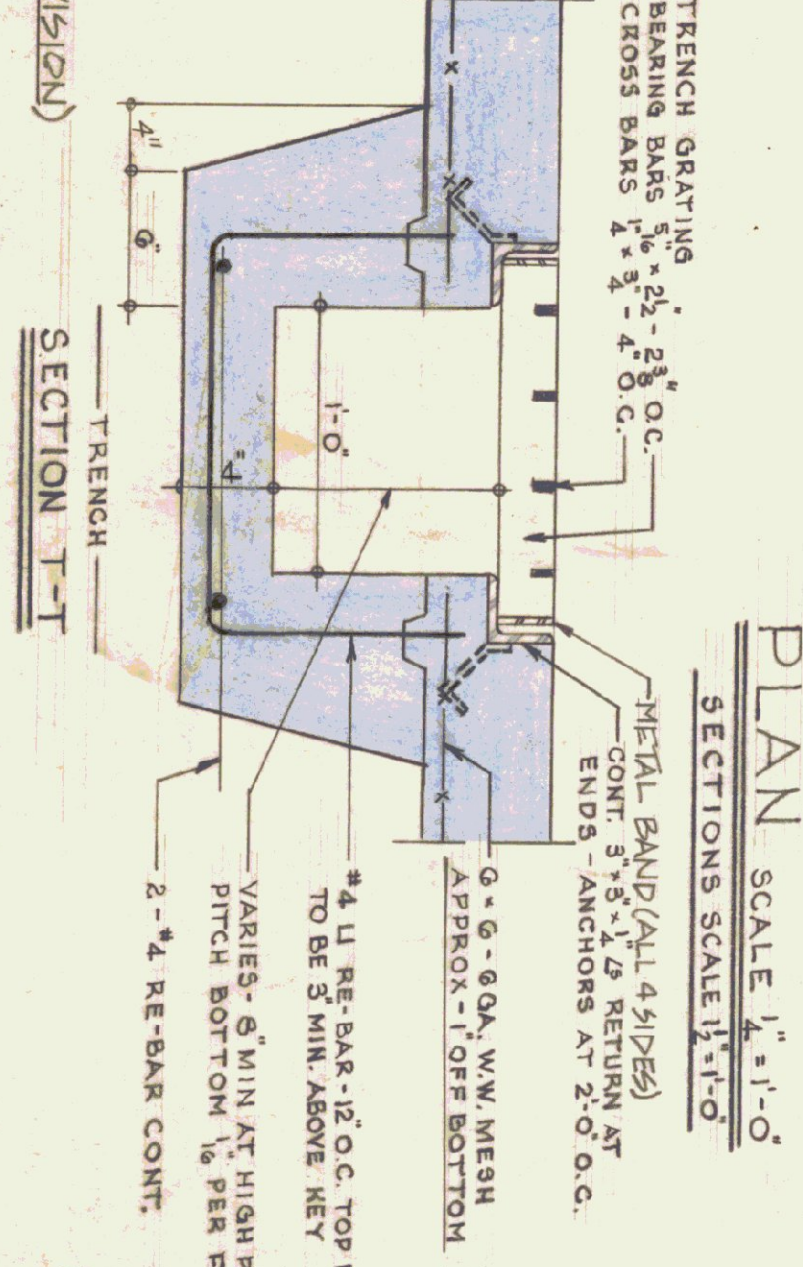


GENERAL NOTES

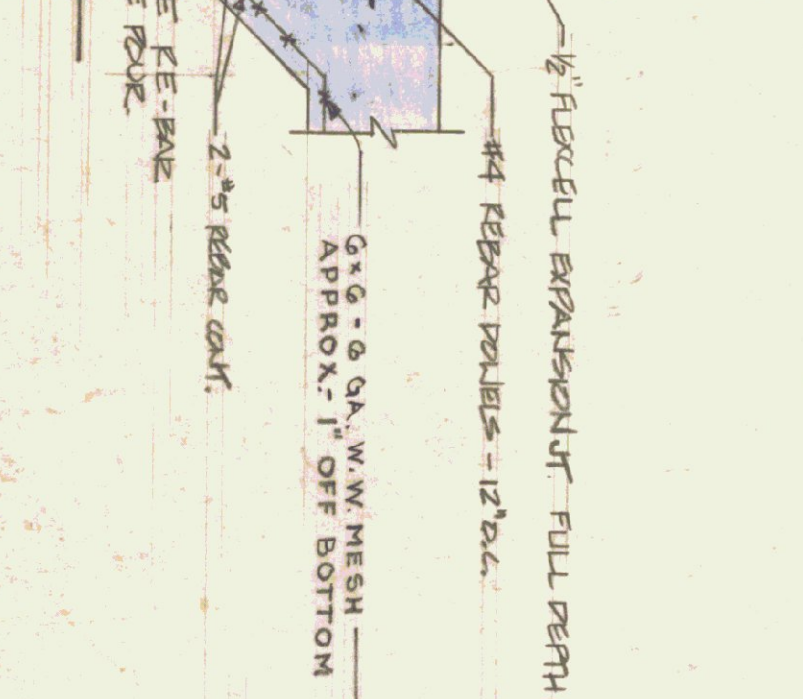
ALL CONCRETE SHALL BE 3000 PSI AT 28 DAYS/MAX. SLUMP OF 4".
 ALL EXPOSED CONCRETE WALLS SHALL HAVE 1/2" JOINT IN EXPOSED FACE.
 ALL CONSTRUCTION JOINTS FOR WALLS TO HAVE LEV JOINT IN EXPOSED FACE.
 ALL CONCRETE TO BE CURED 5/8 TO BE COVERED WITH SIALKRAFT 4105/57
 EXPANSION JOINTS TO HAVE TOoled EDGES.



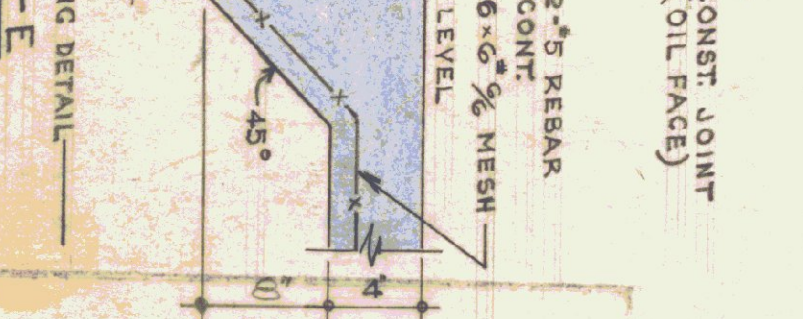
SECTION L-L (SEE SPECS FOR ANY REVISION)
 SCALE 1/16"



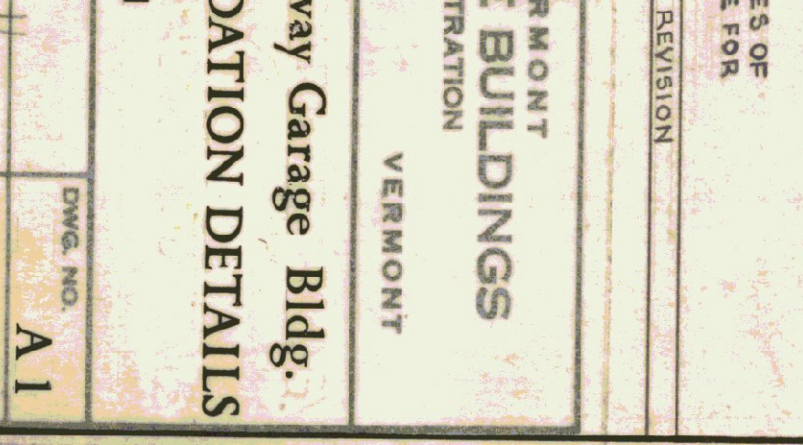
SECTION T-T
 SCALE 1/16"



SECTION J-J
 SCALE 1/16"

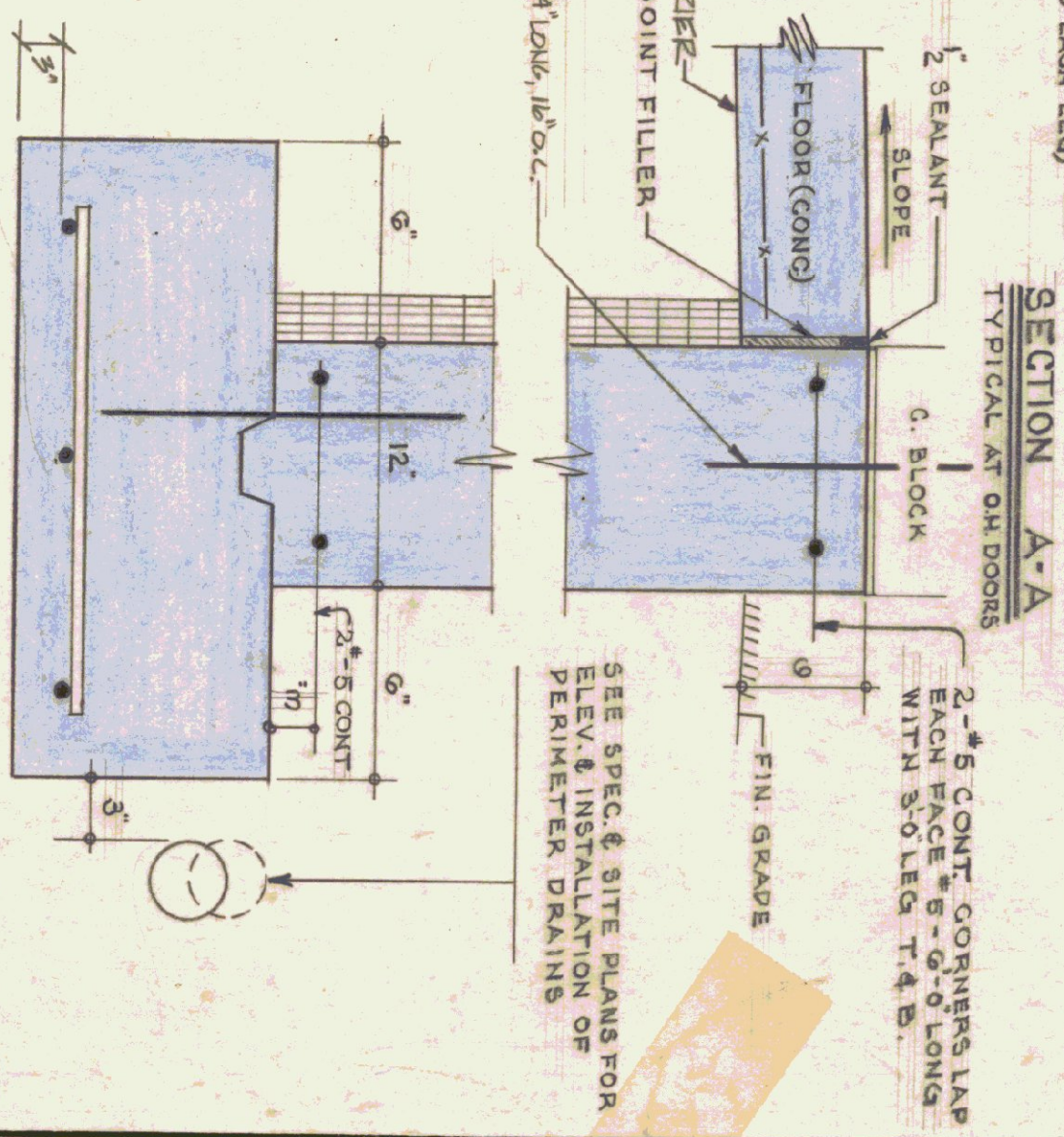


SECTION E-E
 SCALE 1/16"

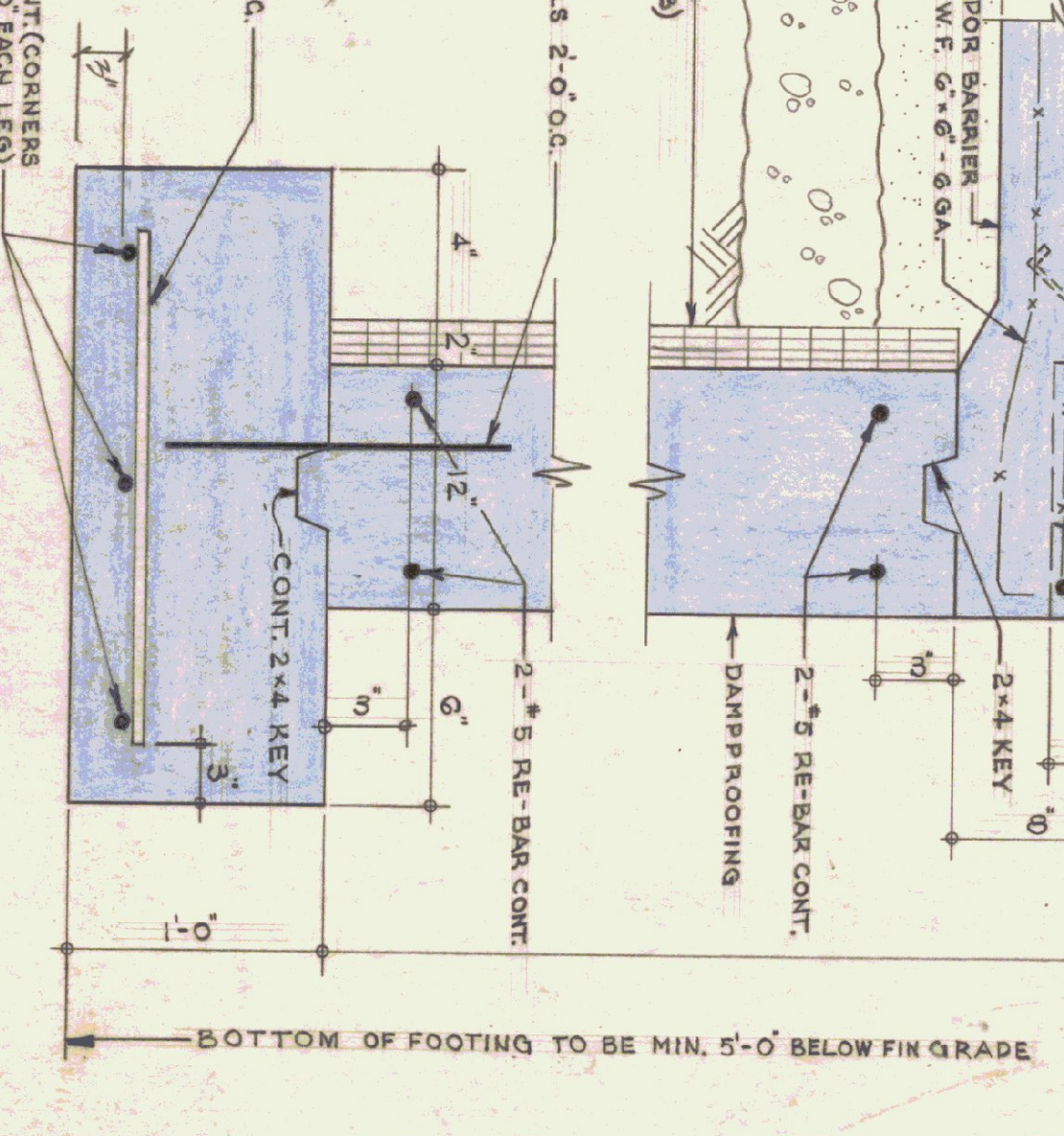


PLAN SCALE 1/4" = 1'-0"
 SECTIONS SCALE 1/16" = 1'-0"

SECTION B-B
 TYPICAL FOUNDATION FOR ALL SIDES OF BLDG, EXCEPT AT DOORS - (SEE ABOVE FOR OTHER INFORMATION)



SECTION A-A
 TYPICAL AT GAR DOORS

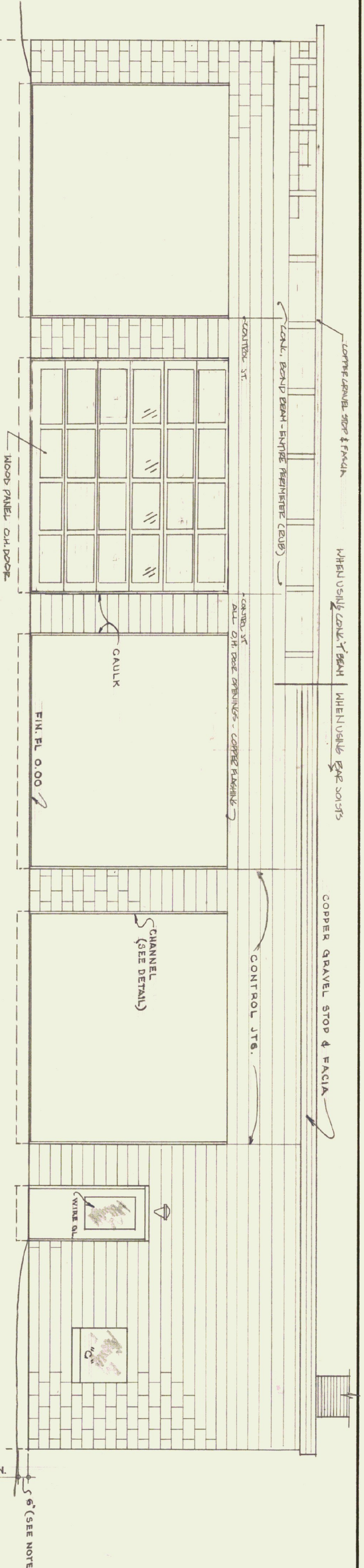


REVISIONS	DATE	BY	REVISION
1	6-14-76	RLA	

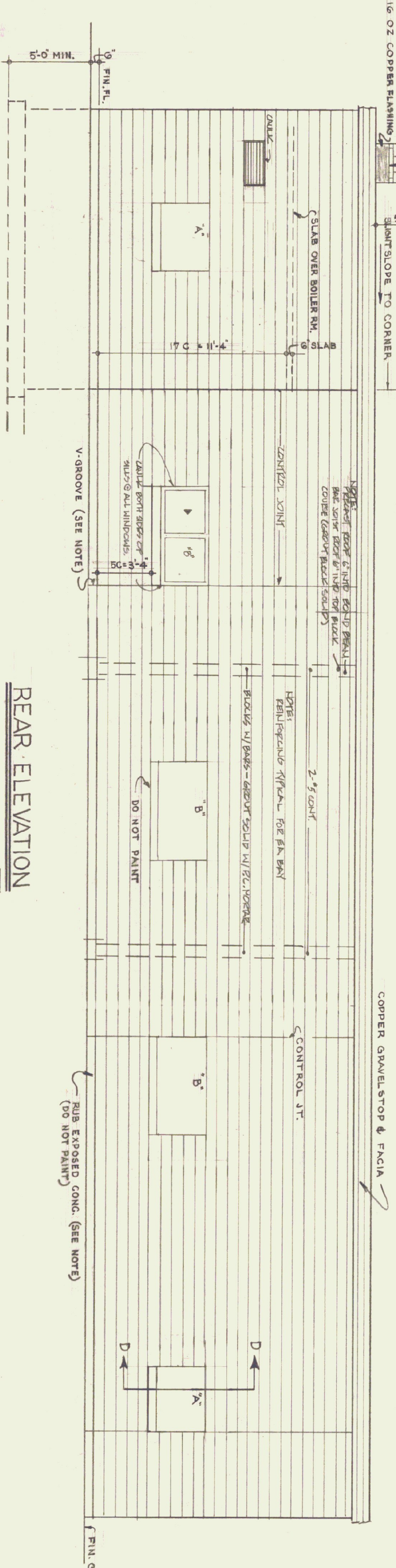
STATE OF VERMONT
 DIVISION OF STATE BUILDINGS
 AGENCY OF ADMINISTRATION
 VERMONT
 MONTPELIER.

Standard Four Bay Highway Garage Bldg.
 FLOOR PLAN & FOUNDATION DETAILS

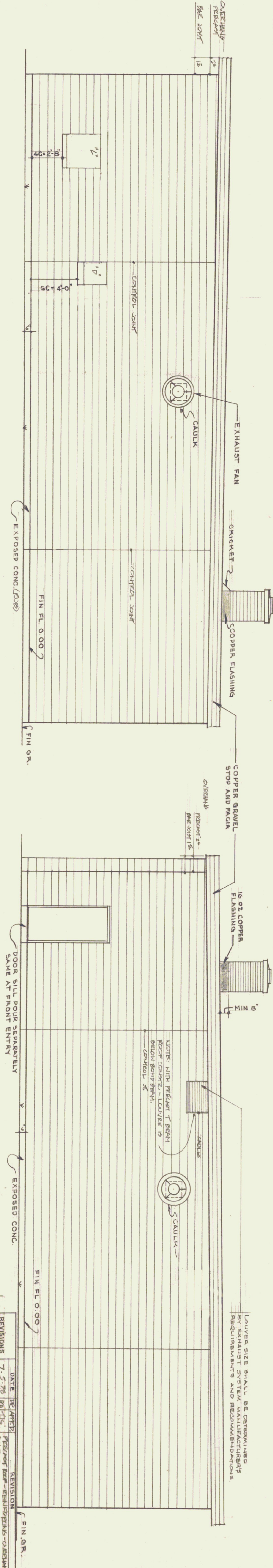
SCALE: As noted
 DATE: 10-18-74
 DRAWING BY: [Signature]
 STUDIO SEVEN INC.
 DESIGNED BY: [Signature]
 APPROVED BY: [Signature]
 DWG. NO. A1



FRONT ELEVATION

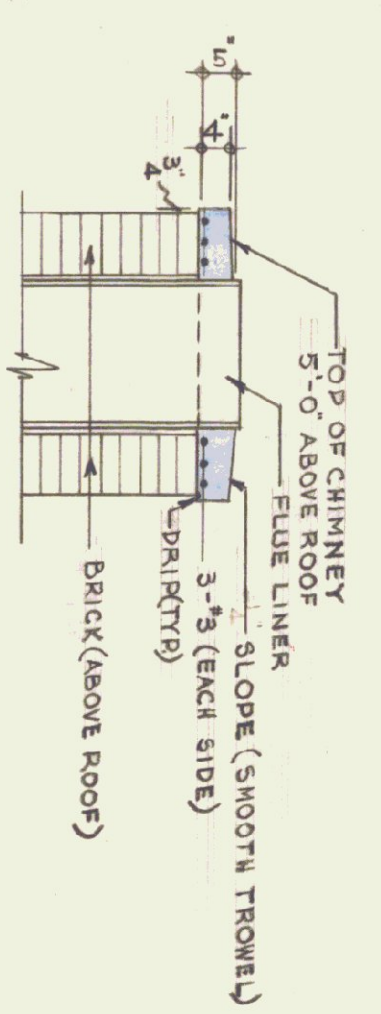


REAR ELEVATION

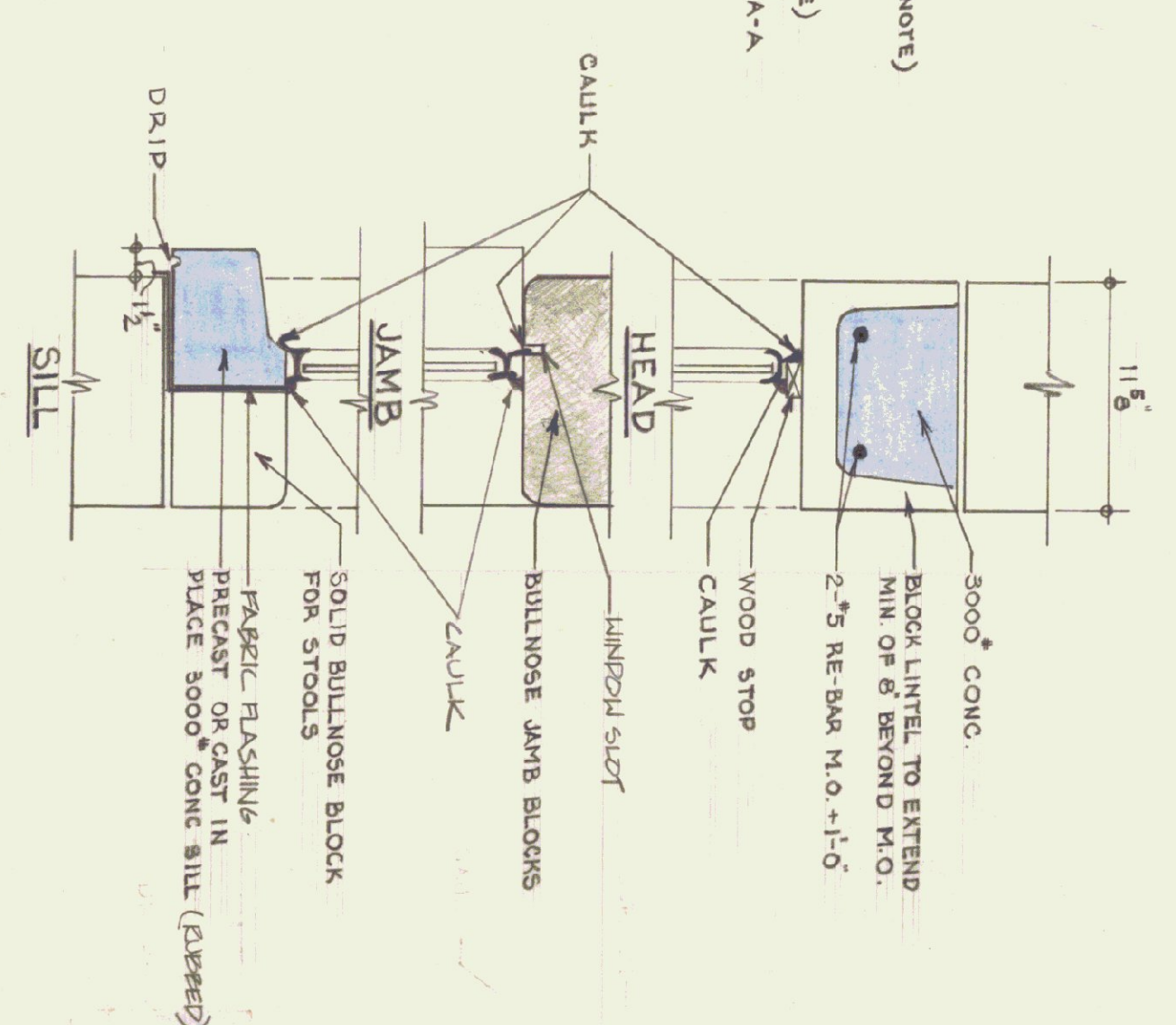


LEFT END ELEVATION

RIGHT END ELEVATION



CHIMNEY CAP DETAIL



SECTION D-D SUBMIT SHOP DRAWINGS FOR WINDOW INSTALLATION AT ALL 'A', 'C' & 'D' WINDOWS

SECTION SCALE 1/2" = 1'-0"

GENERAL NOTES

FINISH GRADE SHALL BE MIN. OF 6" BELOW FINISH FLOOR - AT BLDG ON RIGHT, LEFT & REAR ELEVATIONS. TO BE SLOPED AWAY FROM BLDG TO PREVENT WATER INTRUSION. WORKMAN LIKE TO PROHIBIT WATER POCKETS OR EXCESSIVE WASHING ALL EXPOSED CONCRETE SHALL BE RUBBED TO 4" BELOW FINISH GRADE. BUILD CONTROL JOINTS AS PER SECTION 5-5 ON DWG 3. GAULK ALL JOINTS BETWEEN WROBANKY AND WOOD OR METAL.

COVER SIZE SHALL BE DETERMINED BY REQUIREMENTS AND RECOMMENDATIONS.

REVISIONS	DATE	BY	REVISION
1	7-5-76	JK	REVISION

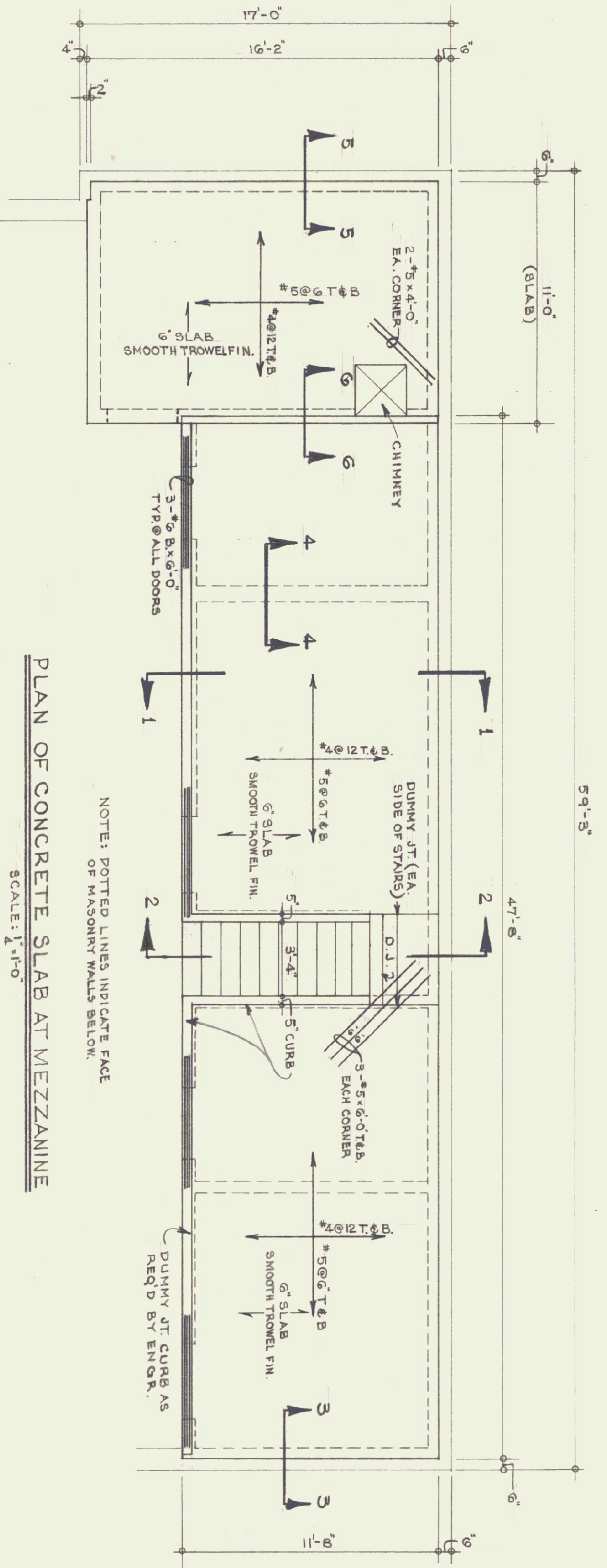
STATE OF VERMONT
DIVISION OF STATE BUILDINGS
AGENCY OF ADMINISTRATION
MONTPELIER, VERMONT

Standard Four Bay Highway Garage Bldg.
ELEVATIONS

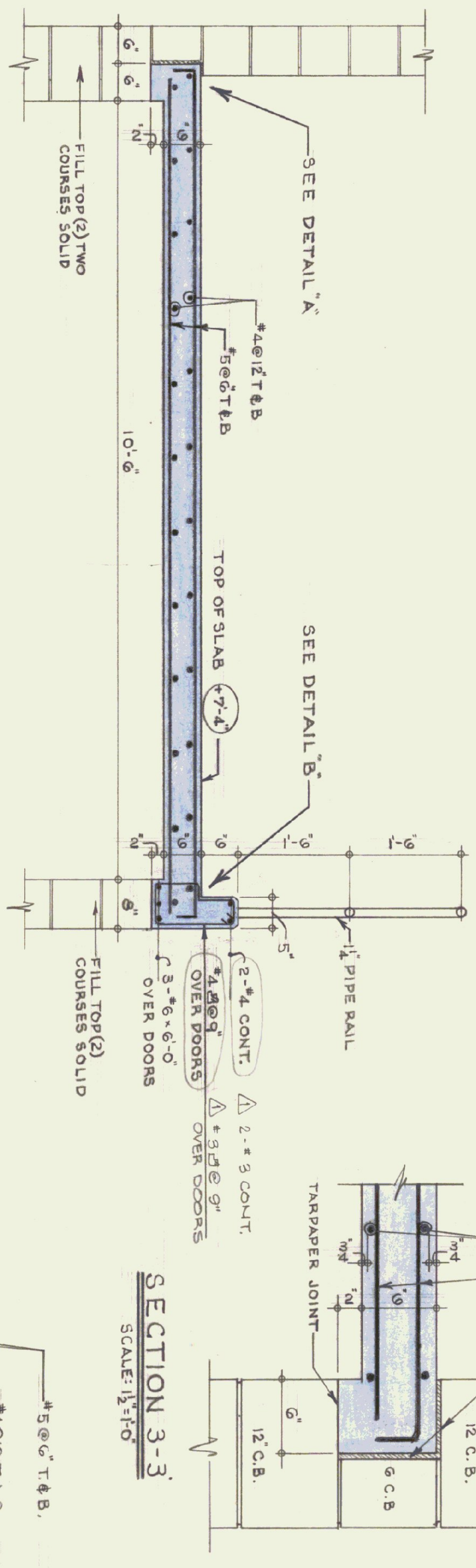
SCALE: As Noted

DATE: 10-18-74	DESIGNED BY: [Signature]	DWG. NO. A2
DRAWN BY: STUDIO SEBEN INC.	APPROVED BY: [Signature]	

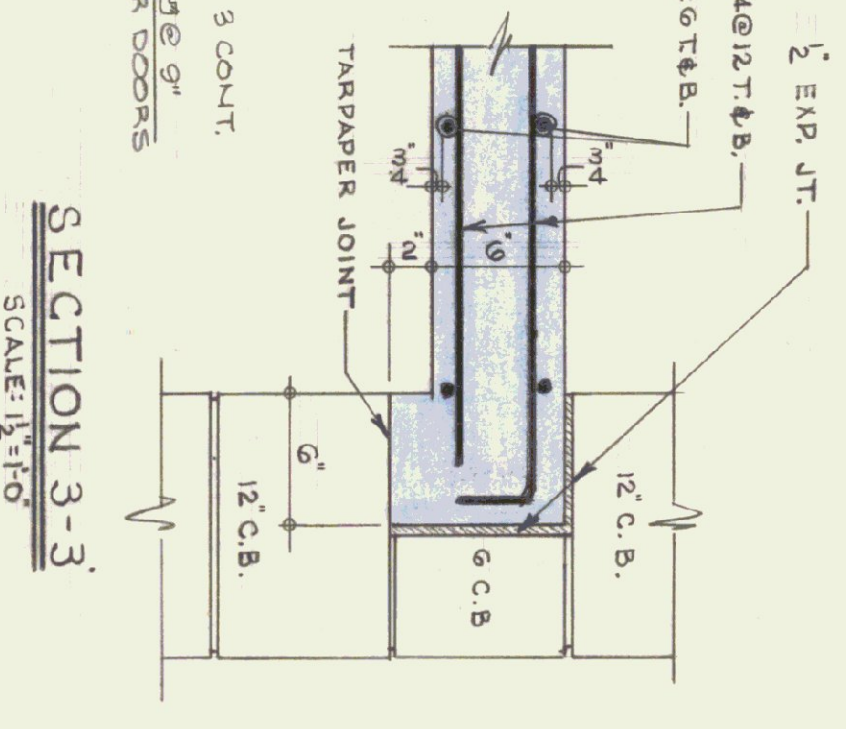
ELEVATIONS SCALE: 1/4" = 1'-0"



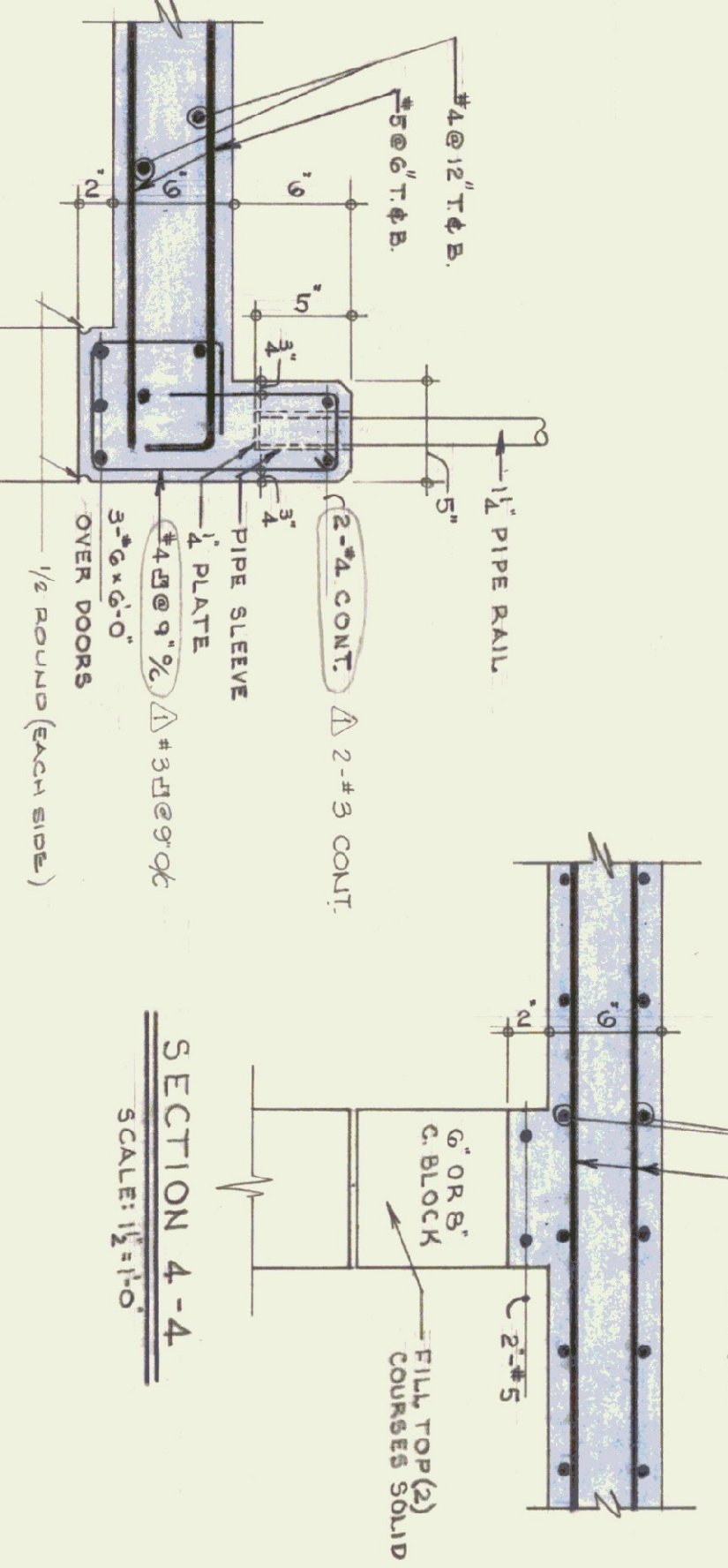
PLAN OF CONCRETE SLAB AT MEZZANINE
SCALE: 1/4"=1'-0"



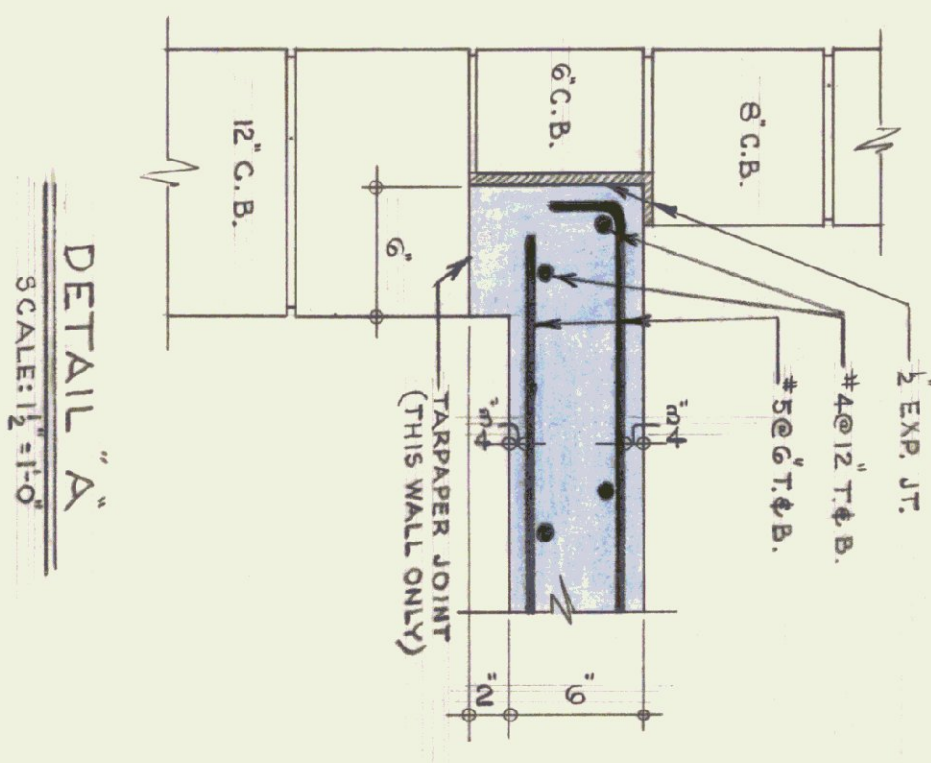
SECTION 1-1
SCALE: 3/4"=1'-0"



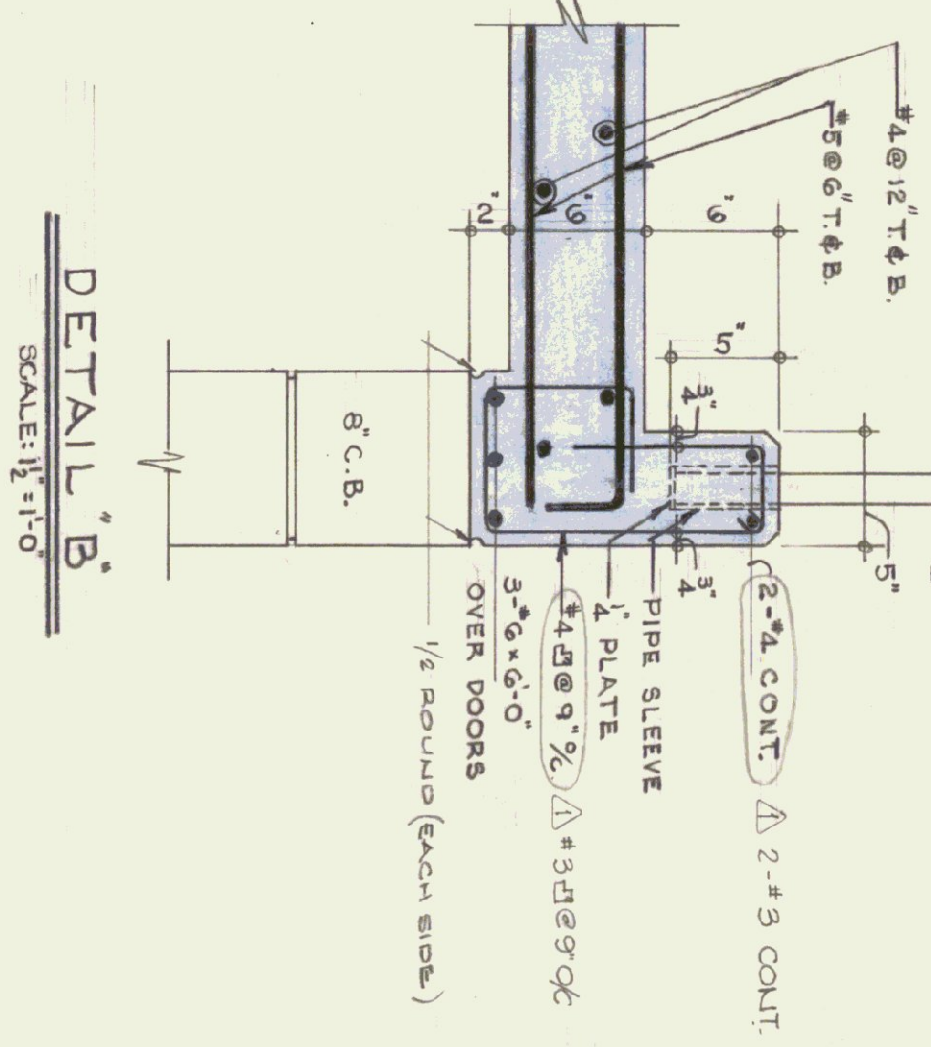
SECTION 3-3
SCALE: 1/2"=1'-0"



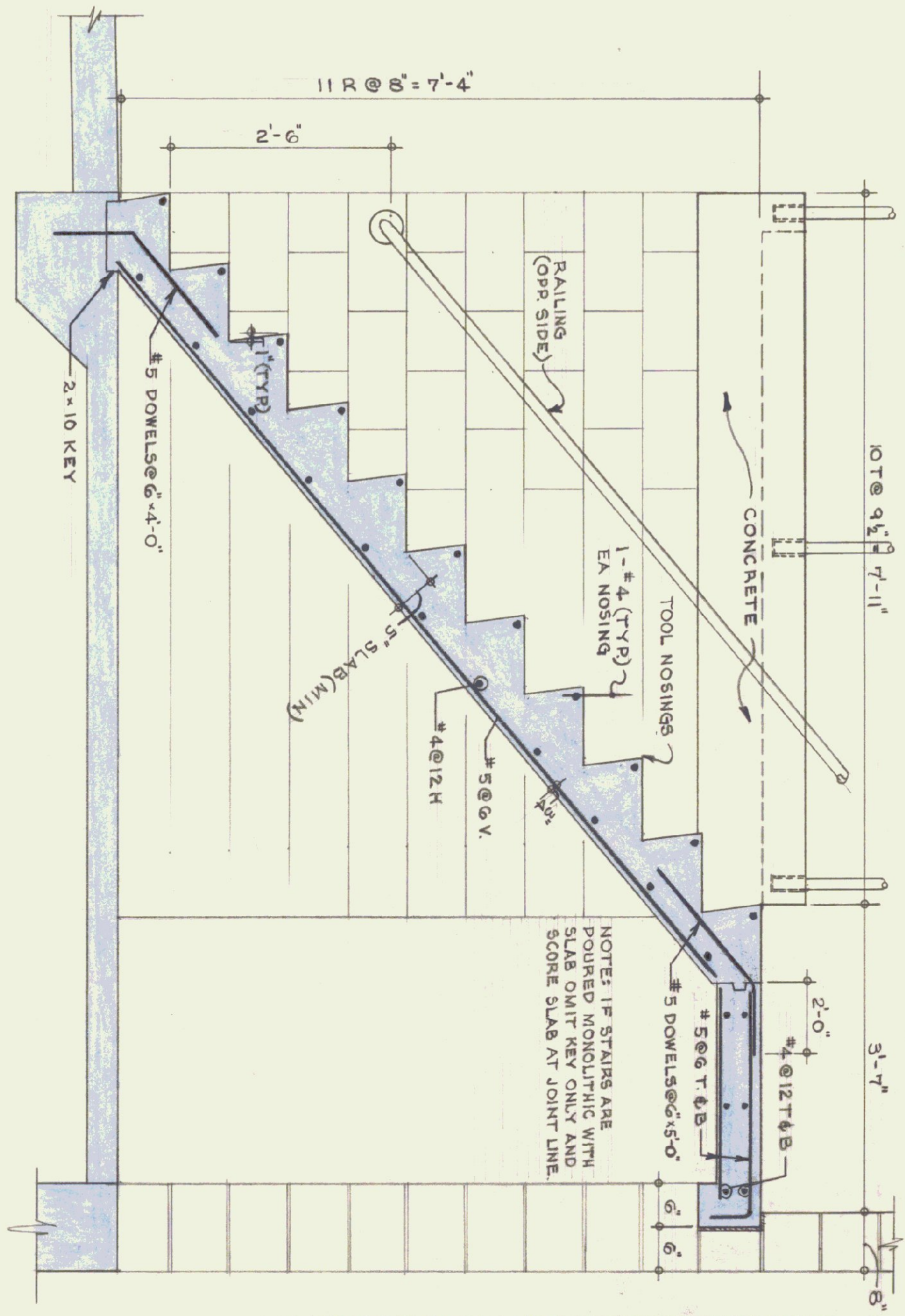
SECTION 4-4
SCALE: 1/2"=1'-0"



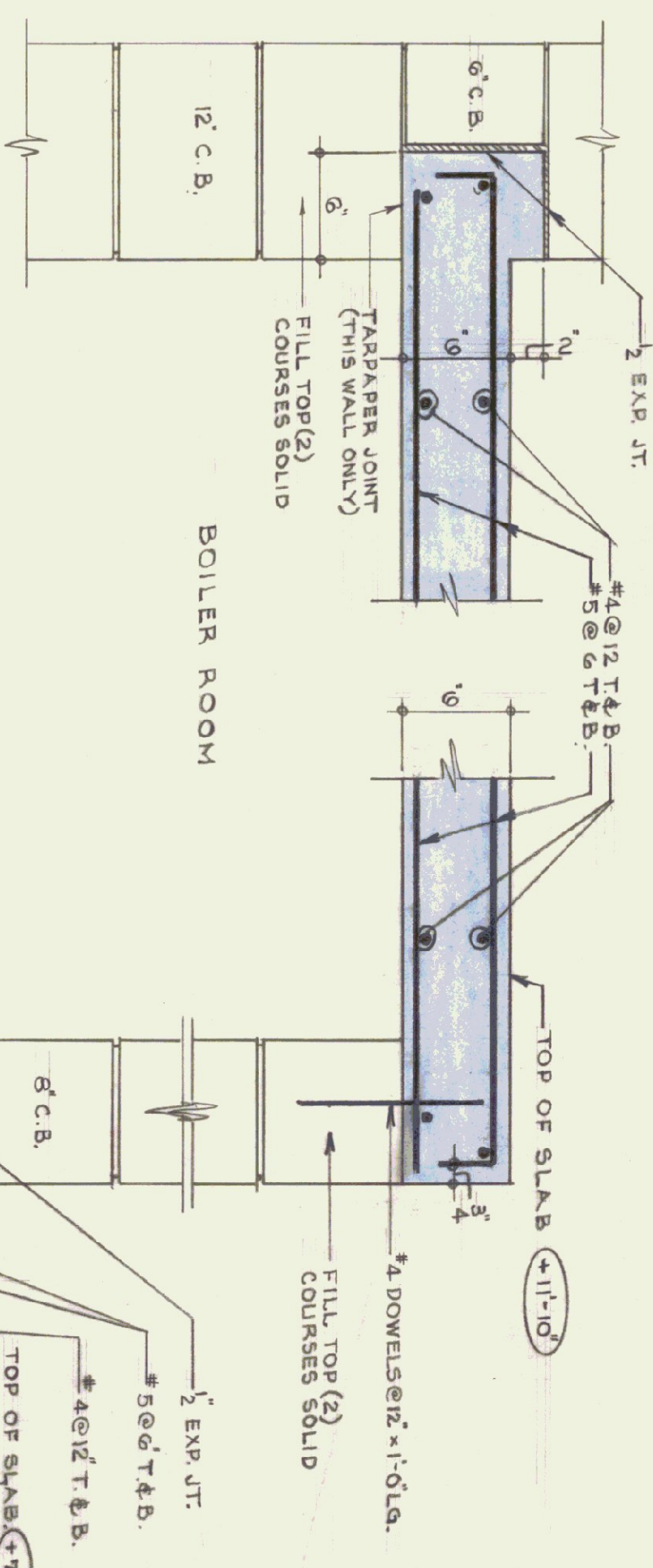
DETAIL A
SCALE: 1 1/2"=1'-0"



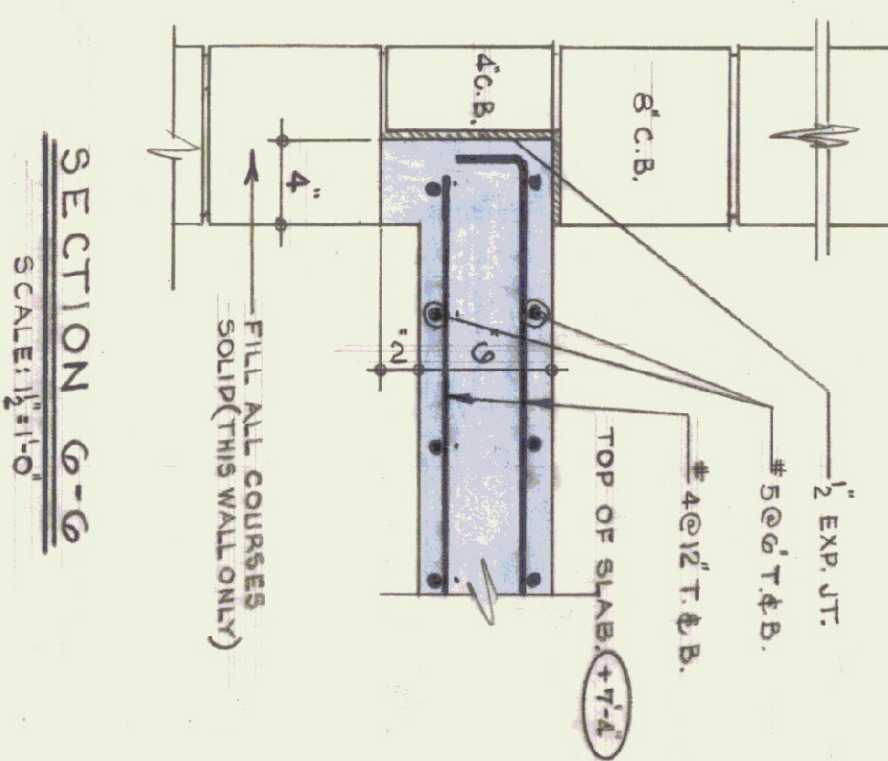
DETAIL B
SCALE: 1 1/2"=1'-0"



SECTION 2-2
SCALE: 3/4"=1'-0"



SECTION 5-5
SCALE: 1 1/2"=1'-0"



SECTION 6-6
SCALE: 1 1/2"=1'-0"

- GENERAL NOTES**
1. CONCRETE - 3000 PSI @ 28 DAYS, MAXIMUM
 2. SLUMP 4".
 3. ALL EXPOSED SLABS & CONCRETE STEMS TO BE COVERED & PROTECTED FOR DURATION OF JOB UNTIL ACCEPTANCE.
 4. EXPOSED CURS CONCRETS TO BE CHANGED TO FINISH TO BE IN PLACE WITHIN 14 DAYS.
 5. DAYS @ 70° F. RE-SHORE AFTER STRIPPING - 14 DAYS.
 6. PROTECT MASONRY FROM CONCRETE-SLAB DRIPPING.
 7. REINFORCING STEEL TO BE LAPPED 40 DIAM.
 8. ALL REINFORCING STEEL TO BE PLACED ON SLAB PVC PLASTIC - CHAINS, LEADS TO BE ELECTRICALLY CONDUIT TO BE LAYED ABOVE BOTTOM FACE STEEL.
 9. ONE SECTION OF RAILINGS EACH SIDE OF STAIRS TO BE REMOVABLE.
 10. ALL STAIRS TO BE LEADED INTO STAIRS.
 11. ALL CONCRETE SLABS SHALL BE SMOOTH TROWELED.
 12. CONCRETE STAIR TREADS SHALL HAVE INTEGRAL ABRASIVE HARDENER.

NO.	BY	DATE	REVISION
1	TJS	9/4/75	REIN. # 5 CURS DETAILS

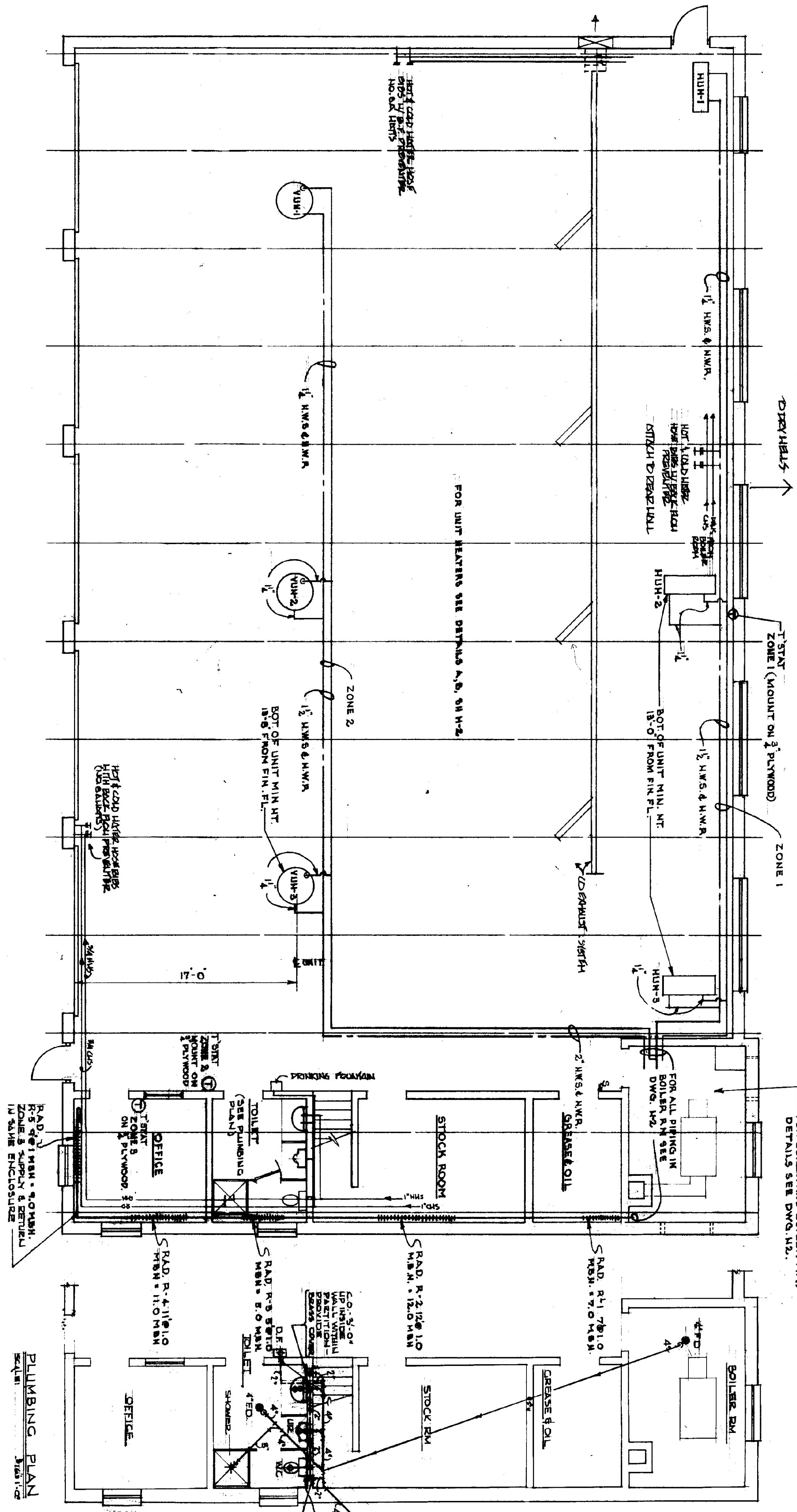
STATE OF VERMONT
DIVISION OF STATE BUILDINGS
AGENCY OF ADMINISTRATION
MONTPELIER, VERMONT

Standard Highway Garage Building
DETAILS OF MEZZANINE, BOILER
ROOM SLABS AND CONC. STAIRWAY

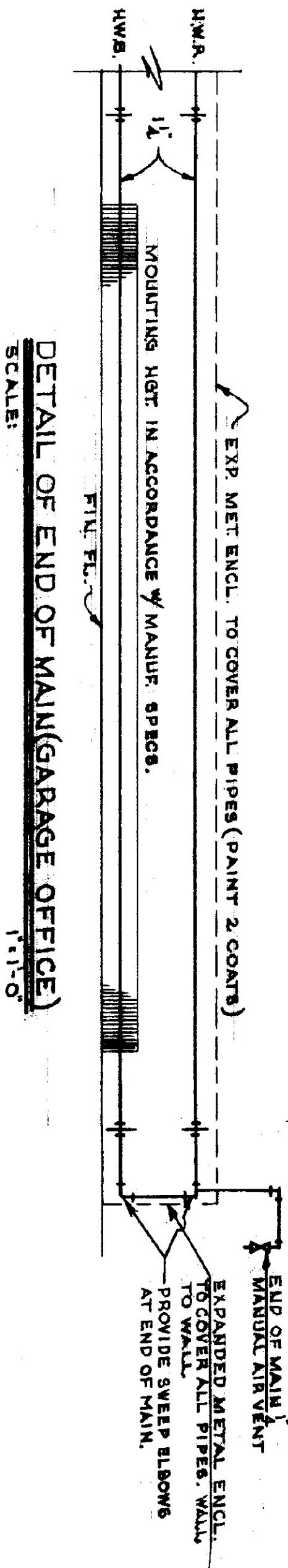
SCALE: As noted

DATE:	DESIGNED BY:	DWG. NO.
10-18-74	T.J.S.	A4
DRAWING BY:	APPROVED BY:	
STUDIO SEVEN INC.	[Signature]	4 of 4

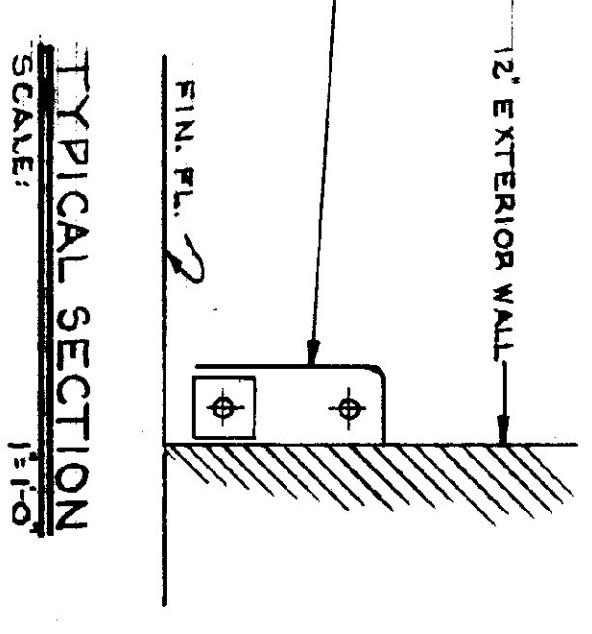
GARAGE PAINTERS RACK
DETAILS AND LOCATION
SEE 54-5



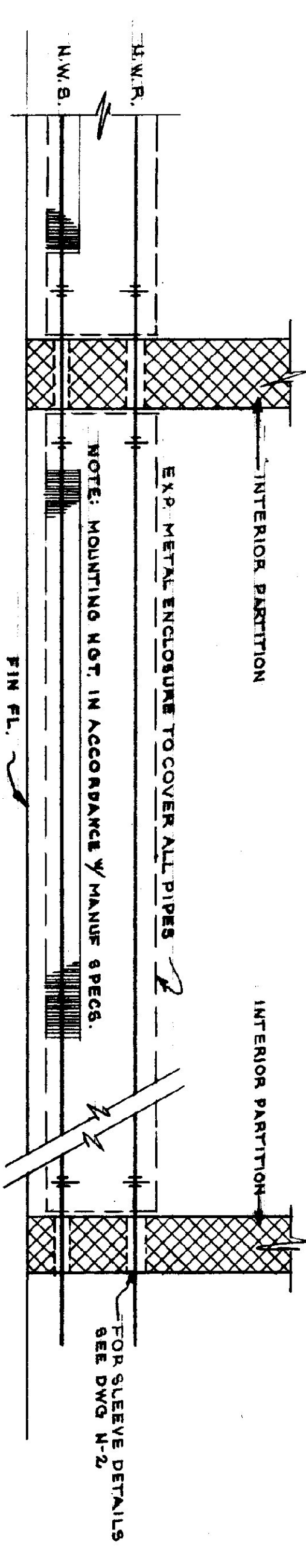
HEATING PLAN
(5 BAY)
SCALE: 3/16" = 1'-0"



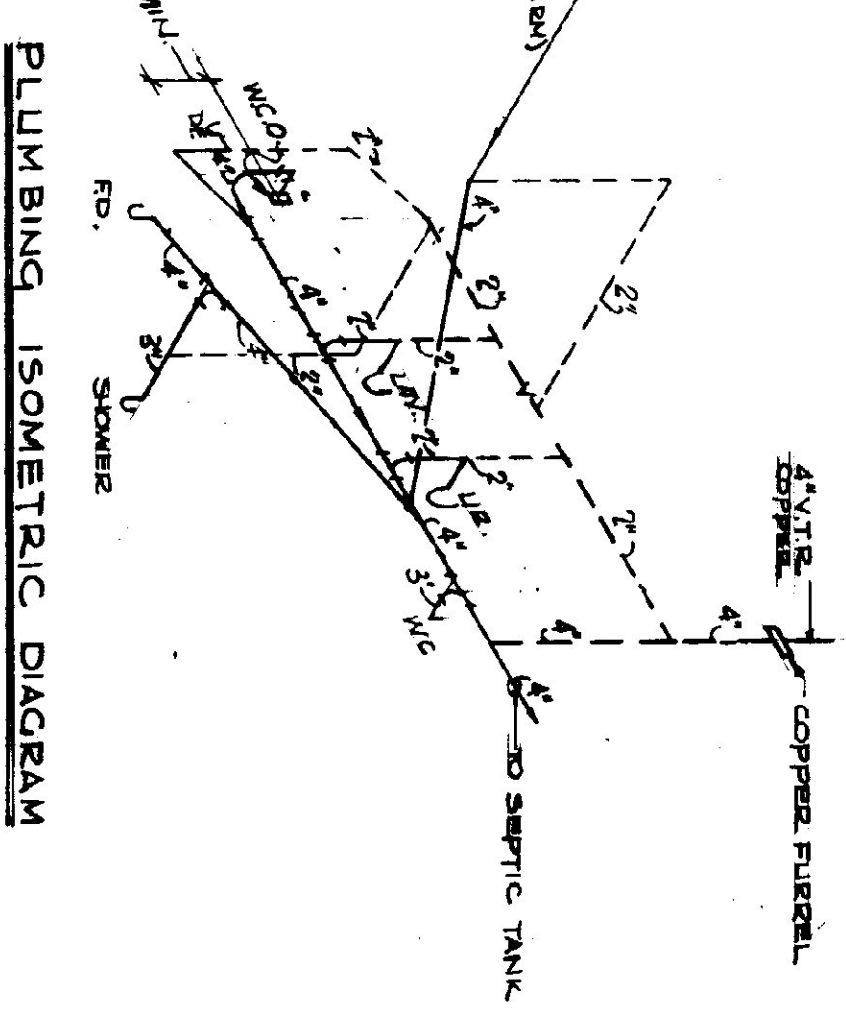
DETAIL OF END OF MAIN (GARAGE OFFICE)
SCALE: 1/4" = 1'-0"



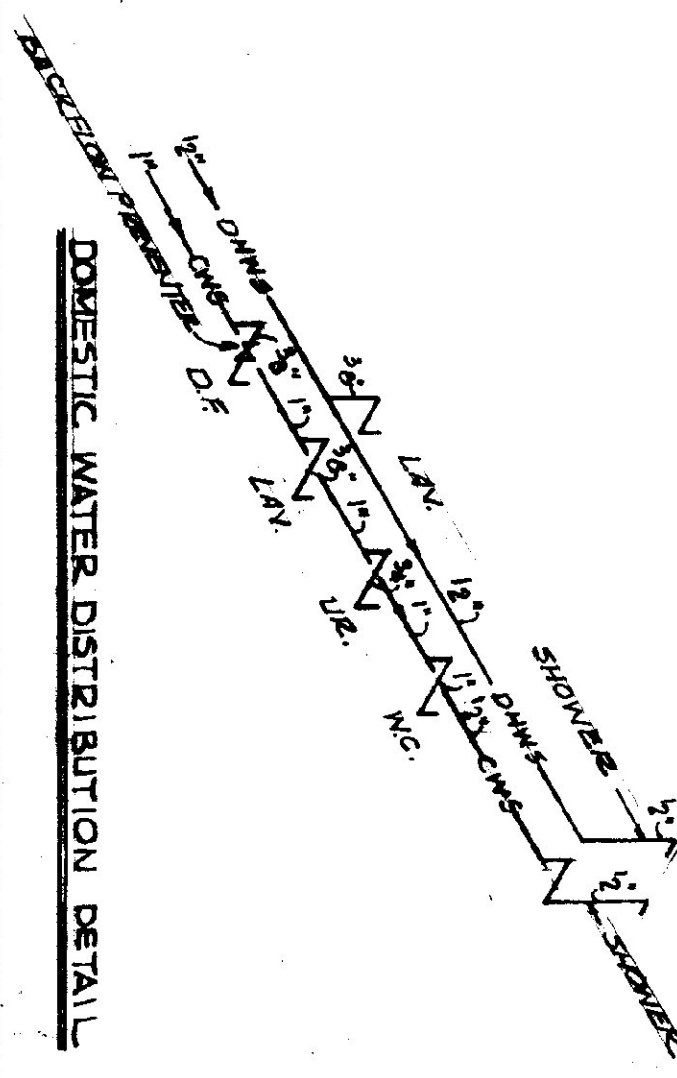
TYPICAL SECTION
SCALE: 1/4" = 1'-0"



TYPICAL BASEBOARD RADIATION PIPING
SCALE: 1/4" = 1'-0"



PLUMBING ISOMETRIC DIAGRAM

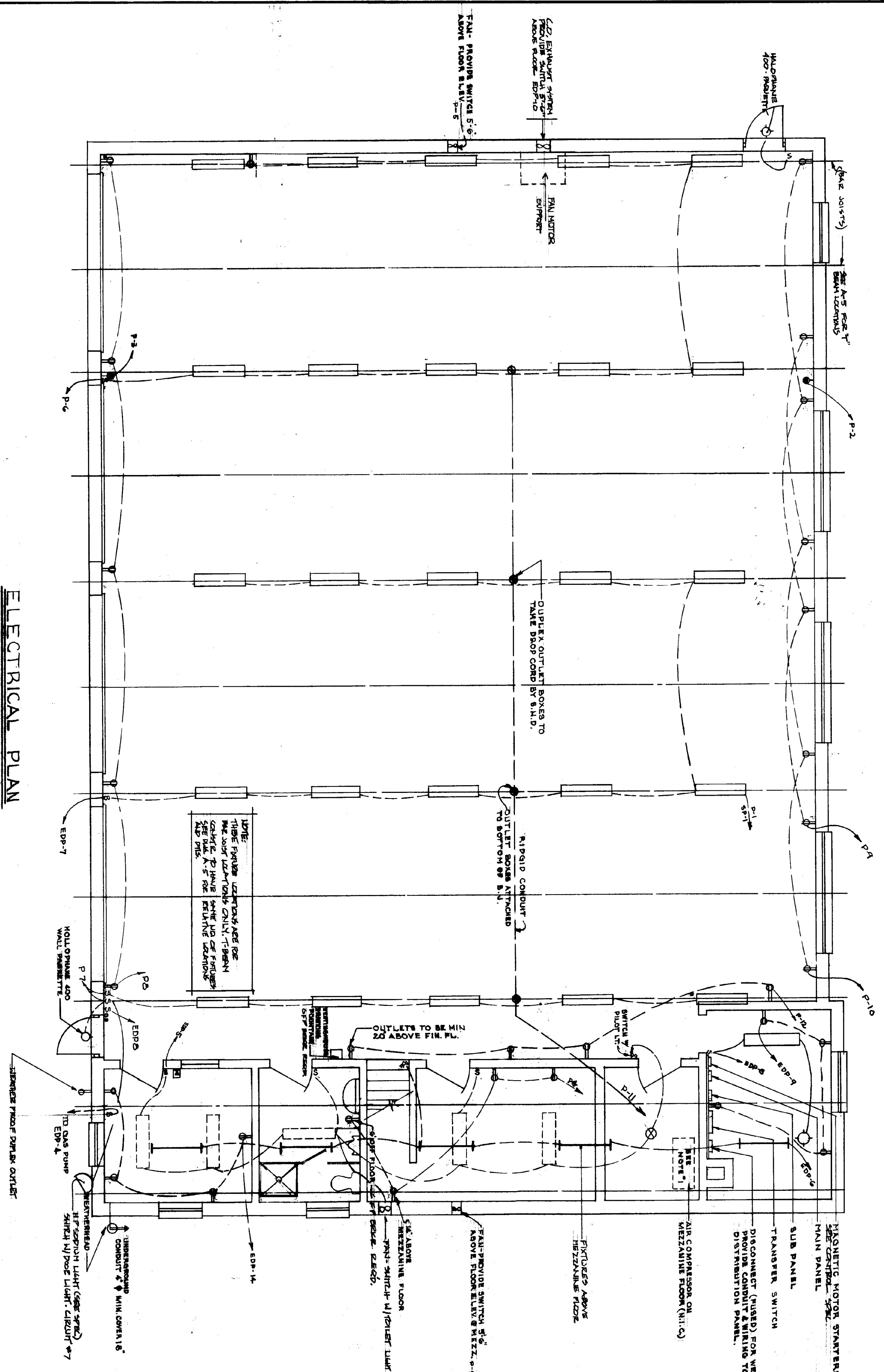


DOMESTIC WATER DISTRIBUTION DETAIL

SEE DRAWING H-2 FOR SCHEDULES & GENERAL NOTES

- LEGEND
- H.W.S. --- HEATING WATER SUPPLY
 - H.W.R. --- HEATING WATER RETURN
 - ⊕ BURNER SAFETY SWITCH (40 AMP) 1/2" GAS
 - ⊕ T STATE PIPE SUPPLY TO BOTTOM & RETURN TO TOP
 - H.U.H. --- HANGING UNIT
 - ⊕ GATE VALVE
 - ⊕ CHECK VALVE
 - ⊕ BALANCING COCK
 - ⊕ FLOW CONTROL VALVE
 - ⊕ LIQUID FUSIBLE LEVER-HYDRA-TIC VALVE
 - ⊕ STRAINER
 - ⊕ P.V. - ALL BRONZE
 - ⊕ B.K. FROM REPAIRER

DATE: 10-18-74	DESIGNED BY: C.W. MAZUR	CHECKED BY: H.I.
DRAWING NO: 54-5	PROJECT NO: 54-5	SCALE: AS SHOWN
STATE OF VERMONT DIVISION OF STATE BUILDINGS AGENCY OF ADMINISTRATION VERMONT Standard Five Bay Highway Garage Bldg. HEATING PLAN		



NOTE:
 THESE FIXTURE LOCATIONS ARE FOR
 THE JOB LOCATIONS ONLY. IT BEING
 COULD BE TO HAVE SOME OF FIXTURES
 SEE PLAN A-5 FOR RELATIVE LOCATIONS
 AND PINS.

ELECTRICAL PLAN

SCALE: 1/4" = 1'-0"

GENERAL NOTES

- 1. SWITCHBOARD "TECU" 30.1 REC. 3-40S OR EQUIV. (MOUNT ON BOTTOM OF JOISTS)
- 2. WESTINGHOUSE 1-TUBE RB STRAP 5 STATOR OR EQUIV. (MOUNT ON BOTTOM OF JOISTS ABOVE MEZZ. FLOOR.)
- 3. SWITCHCRAFT DOMINIAIRE 6-DMA-2-40 OR EQUIV. (SURFACE MOUNT TO CEILING)
- 4. THERMOSTAT - CONNECT TO CIRCUIT 12 AND TO SUB-PANEL (CIRCUIT 1 MOUNT ON PLYWOOD 5'-6" OFF FLOOR (SEE H-1))
- 5. 100 AMP WELDER OUTLET
- 6. ALLOW FOR TELEPHONE SLEEVE THRU EXTERIOR WALL
- 7. COORDINATE WITH LOCAL TELEPHONE CO.
- 8. 5/8 BURNER SAFETY SWITCH - MOUNT 6" ABOVE FIN. FL.
- 9. ALL ELECTRICAL CONDUIT FOR OFFICE, TOILET, TOOL RM AND GREENS RM. CEILINGS SHALL BE CONCEALED IN THE CONCRETE MEZZANINE SLAB.
- 10. ALL WALL RECEPTACLES AND CONDUIT BELOW BOTTOM OF BAR JOISTS SHALL BE CONCEALED, EXCEPT TO U.H. HOSES

POWER PANEL SCHEDULE

CIRCUIT	DESCRIPTION	REMARKS
P-1	100 A. 3 PHASE 4 WIRE	REPAIRS
P-2	100 A. 3 PHASE 4 WIRE	REPAIRS
P-3	100 A. 3 PHASE 4 WIRE	REPAIRS
P-4	100 A. 3 PHASE 4 WIRE	REPAIRS
P-5	100 A. 3 PHASE 4 WIRE	REPAIRS
P-6	100 A. 3 PHASE 4 WIRE	REPAIRS
P-7	100 A. 3 PHASE 4 WIRE	REPAIRS
P-8	100 A. 3 PHASE 4 WIRE	REPAIRS
P-9	100 A. 3 PHASE 4 WIRE	REPAIRS
P-10	100 A. 3 PHASE 4 WIRE	REPAIRS
P-11	100 A. 3 PHASE 4 WIRE	REPAIRS
P-12	100 A. 3 PHASE 4 WIRE	REPAIRS
P-13	100 A. 3 PHASE 4 WIRE	REPAIRS
P-14	100 A. 3 PHASE 4 WIRE	REPAIRS
P-15	100 A. 3 PHASE 4 WIRE	REPAIRS
P-16	100 A. 3 PHASE 4 WIRE	REPAIRS
P-17	100 A. 3 PHASE 4 WIRE	REPAIRS
P-18	100 A. 3 PHASE 4 WIRE	REPAIRS
P-19	100 A. 3 PHASE 4 WIRE	REPAIRS
P-20	100 A. 3 PHASE 4 WIRE	REPAIRS

EMERGENCY DIST. PANEL SCHEDULE

CIRCUIT	DESCRIPTION	REMARKS
E-1	40 A. 2 PHASE 3 WIRE	REPAIRS
E-2	20 A. 1 PHASE 2 WIRE	REPAIRS
E-3	20 A. 1 PHASE 2 WIRE	REPAIRS
E-4	20 A. 1 PHASE 2 WIRE	REPAIRS
E-5	20 A. 1 PHASE 2 WIRE	REPAIRS
E-6	20 A. 1 PHASE 2 WIRE	REPAIRS
E-7	20 A. 1 PHASE 2 WIRE	REPAIRS
E-8	20 A. 1 PHASE 2 WIRE	REPAIRS
E-9	20 A. 1 PHASE 2 WIRE	REPAIRS
E-10	20 A. 1 PHASE 2 WIRE	REPAIRS
E-11	20 A. 1 PHASE 2 WIRE	REPAIRS
E-12	20 A. 1 PHASE 2 WIRE	REPAIRS
E-13	20 A. 1 PHASE 2 WIRE	REPAIRS
E-14	20 A. 1 PHASE 2 WIRE	REPAIRS
E-15	20 A. 1 PHASE 2 WIRE	REPAIRS
E-16	20 A. 1 PHASE 2 WIRE	REPAIRS
E-17	20 A. 1 PHASE 2 WIRE	REPAIRS
E-18	20 A. 1 PHASE 2 WIRE	REPAIRS
E-19	20 A. 1 PHASE 2 WIRE	REPAIRS
E-20	20 A. 1 PHASE 2 WIRE	REPAIRS

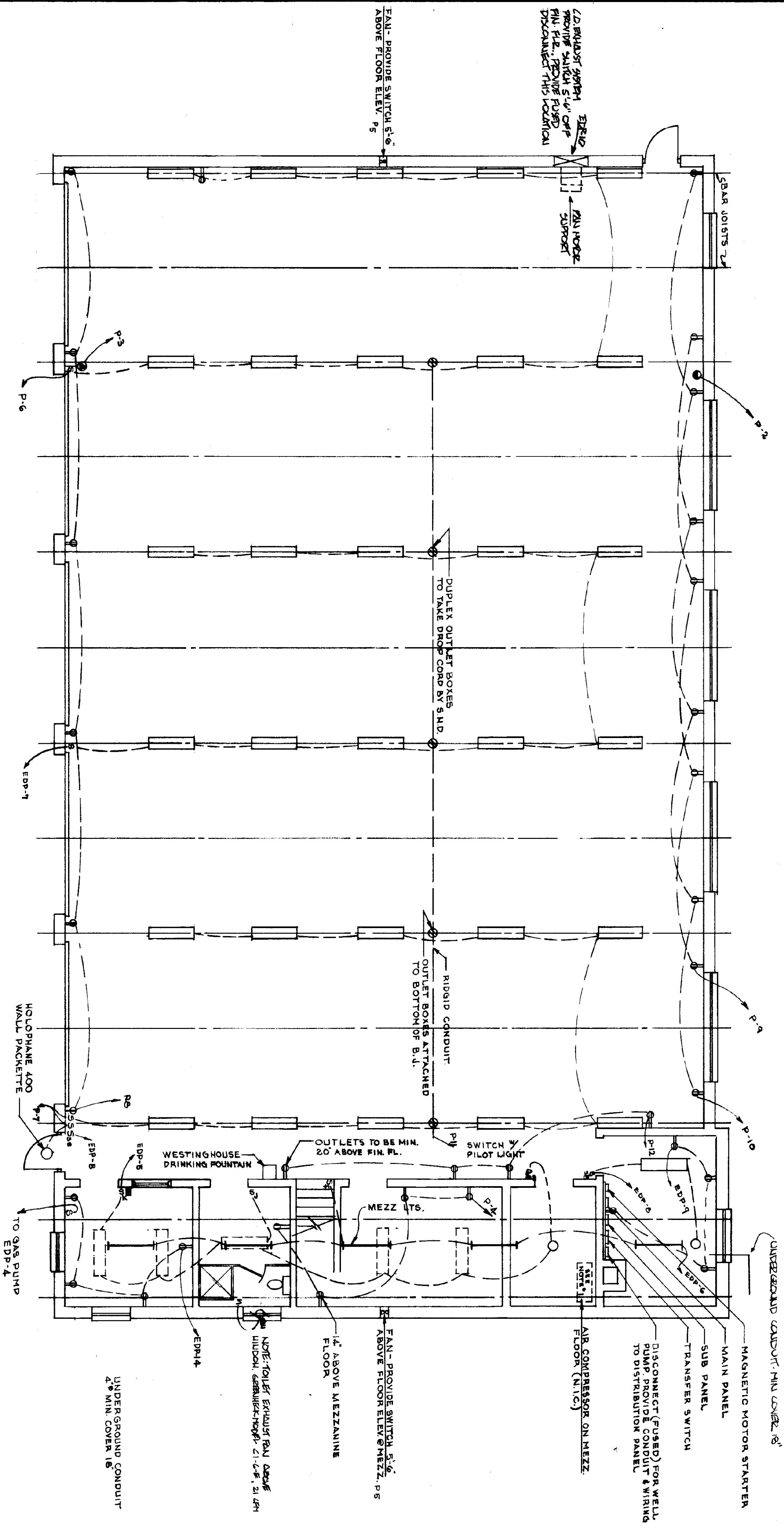
REVISIONS: 7/6/78 EJA

DATE: 7/6/78

STATE OF VERMONT
 DIVISION OF STATE BUILDINGS
 AGENCY OF ADMINISTRATION
 MONTPELIER, VERMONT

Standard Four Bay Highway Garage Bldg
 ELECTRICAL PLAN

DATE: 10-10-78
 DRAWN BY: GUN WASTED
 CHECKED BY: H. M. J. S. J.
 PROJECT NO. 100-100-100-100



ELECTRICAL PLAN

(5 BAY)

SCALE: 1/8" = 1'-0"

POWER PANEL SCHEDULE				EMERGENCY DISTRIBUTION PANEL SCHEDULE			
CIRC.	AMP.	TYPE	REMARKS	CIRC.	AMP.	TYPE	REMARKS
P-1	100	2	EMERGENCY DIST. PANEL	1	40	2	AIR COMPRESSOR
P-2	50	2	WELDING RECEPTACLE	2	20	1	BURNER
P-3	20	2	do	3	20	2	WELL PUMP
P-4	20	1	TOILET & STOR. RM. RECEPT.	4	20	1	GAS PUMP
P-5	20	1	BLDG. EXHAUST	5	20	1	OFFICE LIGHTING
P-6	20	1	SHOP LIGHTING	6	20	1	MEZZ LIGHTING
P-7	20	1	do	7	20	1	SHOP LIGHTING (MIDDLE BAY)
P-8	20	1	SHOP RECEPTACLES (FRONT)	8	20	1	BOILER ROOM LIGHTING
P-9	20	1	SHOP RECEPTS (REAR)	9	20	1	BOILER ROOM RECEPTS
P-10	20	1	do	10	20	2	VEHICULAR, ENH. FAN
P-11	20	1	MID BAY RECEPT & 1ST.	11	20	1	HUN. 1, 2, 3
P-12	20	1	SHOP RECEPTS	12	20	1	CIRC. PUMP ZONE 1
P-13	20	1	CIRC. PUMP (ZONE 2)	13	20	1	CIRC. PUMP ZONE 3
P-14 to 16	20	1	SPARES	14	20	1	OFFICE RECEPTACLES
P-17 to 19	30	2	SPARES	15-17	20	1	SPARES
P-20 to 24	20	1	SPARES				

GENERAL NOTES

- SMITHCRAFT "TECH" 30" T.C. 2-405 (MOUNT ON BOTTOM OF JOISTS)
- WESTINGHOUSE 1-TUBE RS STRIP 5 STIMOR (MOUNT BETWEEN JOISTS)
- SMITHCRAFT DOMINAIRE 6-DMA-2-40 (SURFACE MOUNT TO CEILING)
- THERMOSTAT - CONNECT TO CIRCUIT 12 AND TO SUB-PANEL CIRCUIT 4. MOUNT ON PLYWOOD 5'-6" OFF FLOOR (SEE H-1)
- 50 AMP WELDER OUTLET
- ALLOW FOR TELEPHONE SLEEVE THRU EXTERIOR WALL COORDINATE WITH LOCAL TELEPHONE CO.
- ALL WALL OUTLETS OF OFFICE & ROOM SPACES SHALL BE AT LEAST 36" OFF FLOOR (IN BOILER RM. KEEP OUTLETS MIN. 3'-0" ABOVE FL.)
- 5-B BURNER SAFETY SWITCH - MOUNT 6'-0" ABOVE FIN. FL.
- ALL ELECTRICAL CONDUIT FOR OFFICE TOILET, TOOL RM., AND GREASE RM. CEILING SHALL BE CONCEALED IN THE CONCRETE MEZZANINE SLAB.
- ALL WALL RECEPTACLES AND CONDUIT BELOW BOTTOM OF BAR JOISTS SHALL BE CONCEALED.

DATE: 10-18-74
 DRAWN BY: CLAY HARRIS
 CHECKED BY: [Signature]
 REVISIONS: 10-18-77
 REVISION: REVISION
 STATE OF VERMONT
 DIVISION OF STATE BUILDINGS
 AGENCY OF ADMINISTRATION
 MONTPELIER, VERMONT
 Standard Five Bay Highway Garage Bldg.
 ELECTRICAL PLAN
 SCALE: As Shown
 SHEET NO. E-1