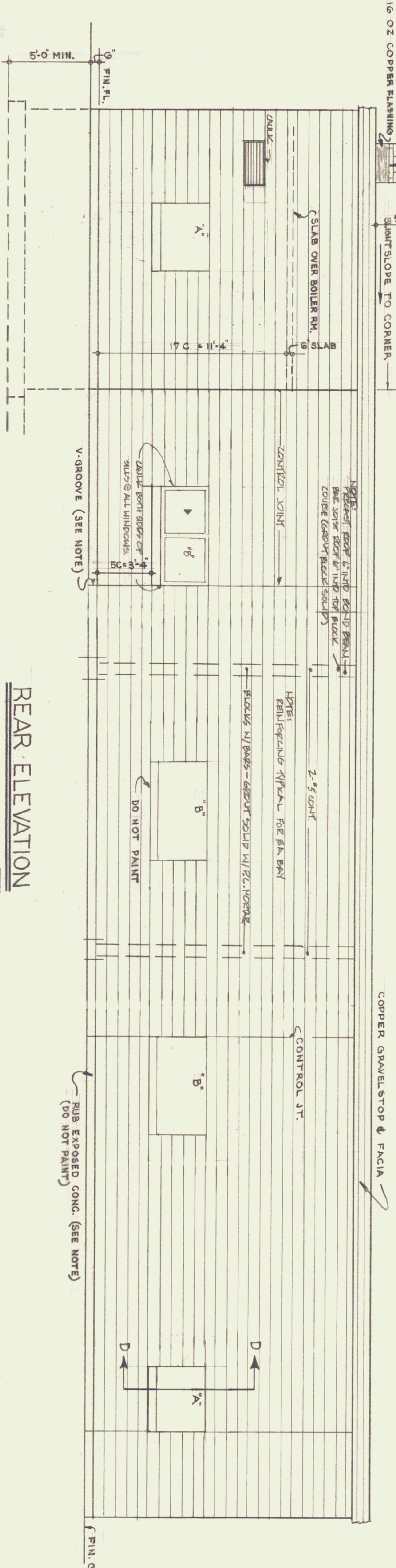
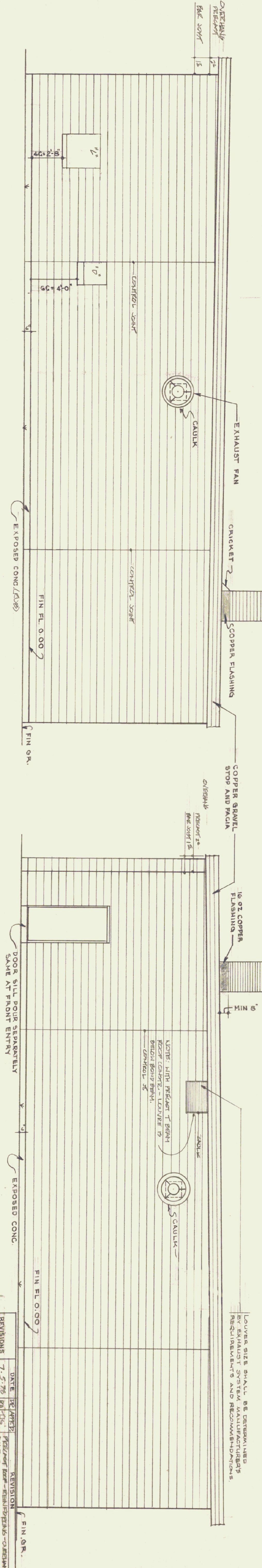


FRONT ELEVATION

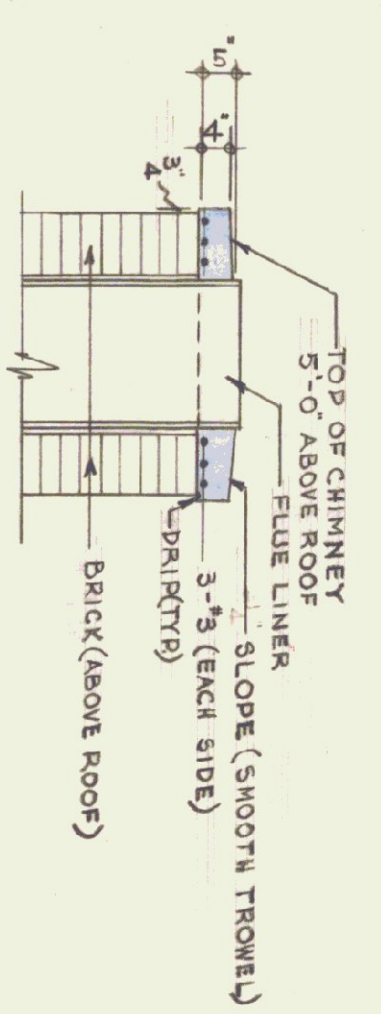


REAR ELEVATION

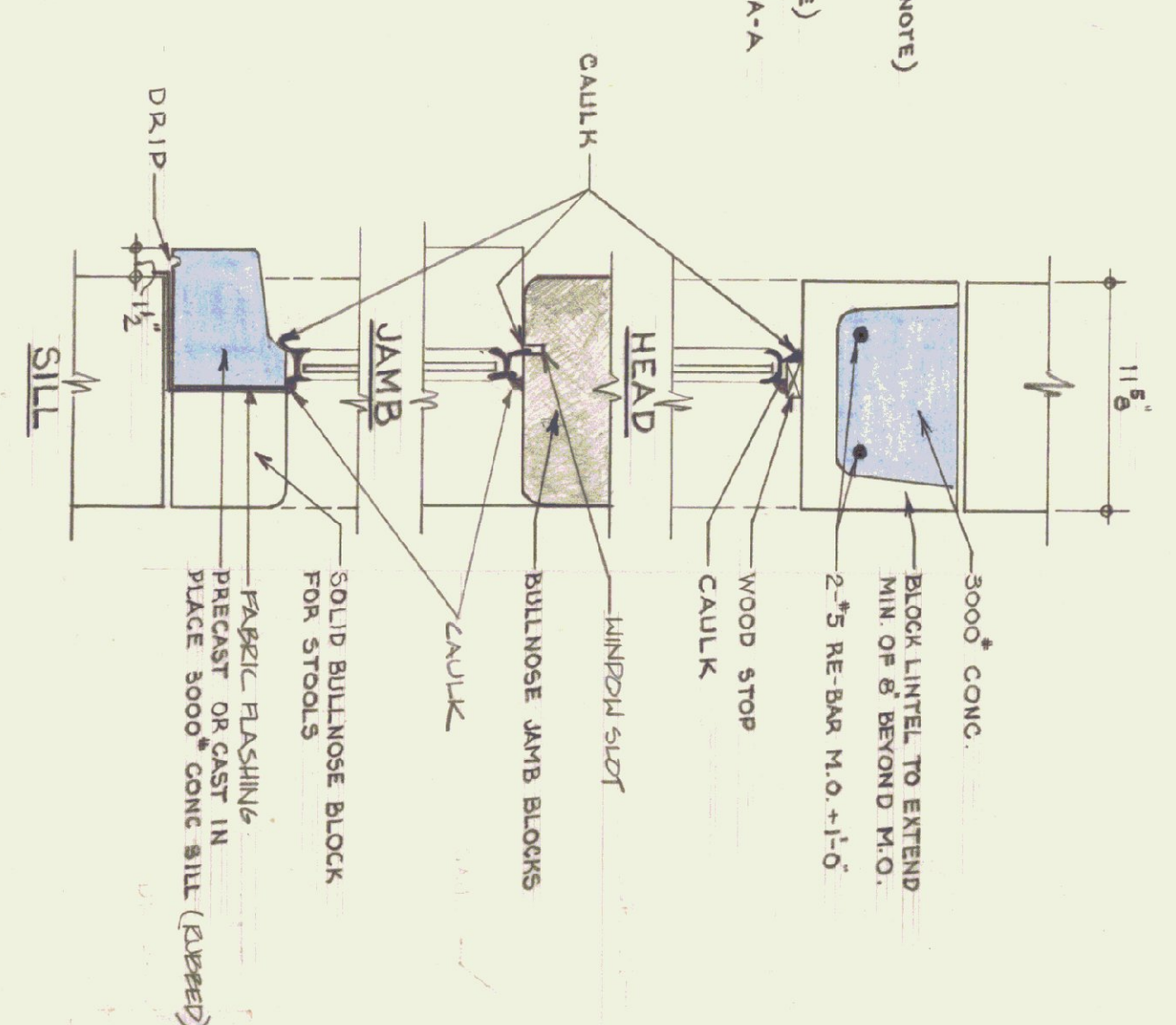


LEFT END ELEVATION

RIGHT END ELEVATION



CHIMNEY CAP DETAIL



SECTION D-D SUBMIT SHOP DRAWINGS FOR WINDOW INSTALLATION

SECTION SCALE 1/2" = 1'-0"

GENERAL NOTES

FINISH GRADE SHALL BE MIN. OF 6" BELOW FINISH FLOOR - AT BLDG ON RIGHT, LEFT & REAR ELEVATIONS. TO BE SLOPED AWAY FROM BLDG TO PREVENT WATER POCKETS OR EXCESSIVE WASHING WORKMAN LIKE TO PROHIBIT WATER POCKETS OR EXCESSIVE WASHING ALL EXPOSED CONCRETE SHALL BE RUBBED TO 4" BELOW FINISH GRADE. BUILD CONCRETE UNDER CONSTRUCTION JOINTS SHALL HAVE A 'V' GROOVE TO 4" BELOW FIN. GRADE. GAULK ALL JOINTS BETWEEN WROSKNY AND WOOD OR METAL

LOVES SIZE SHALL BE DETERMINED BY REQUIREMENTS AND RECOMMENDATIONS

REVISIONS	DATE	BY	REVISION
1	7-5-76	JK	REVISED PER ARCHITECT'S COMMENTS

STATE OF VERMONT  
DIVISION OF STATE BUILDINGS  
AGENCY OF ADMINISTRATION  
MONTPELIER, VERMONT

Standard Four Bay Highway Garage Bldg.  
ELEVATIONS

SCALE: As Noted

DATE	DESIGNED BY	DWG. NO.
10-18-74	Approved by: <i>[Signature]</i>	A2
DRAWN BY:	STUDIO SEBEN INC.	

ELEVATIONS SCALE: 1/4" = 1'-0"