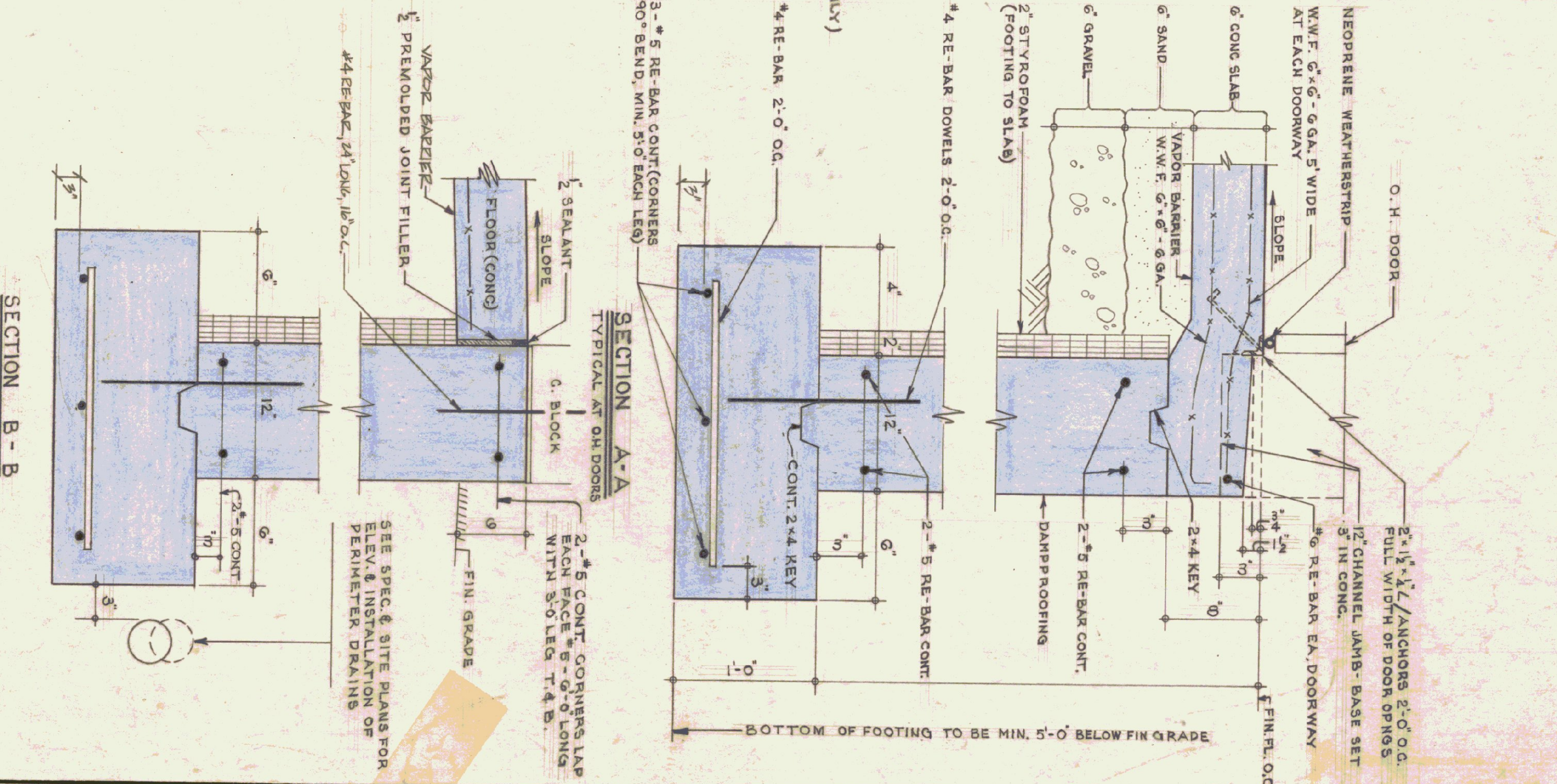
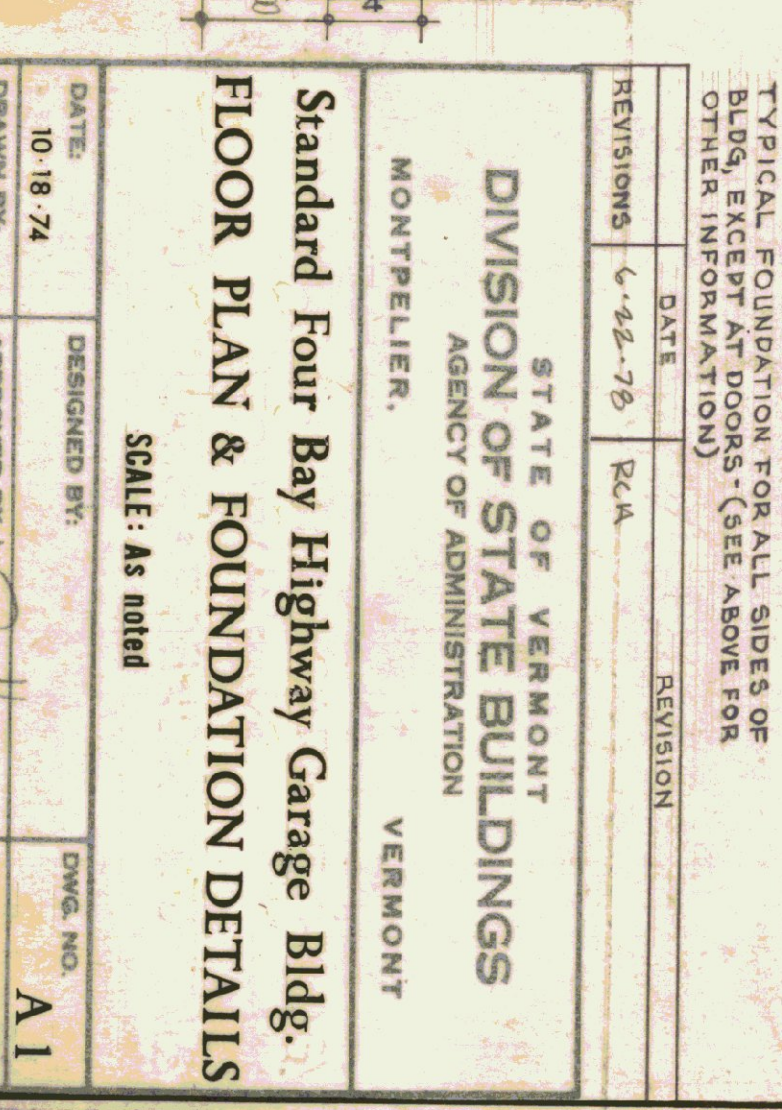
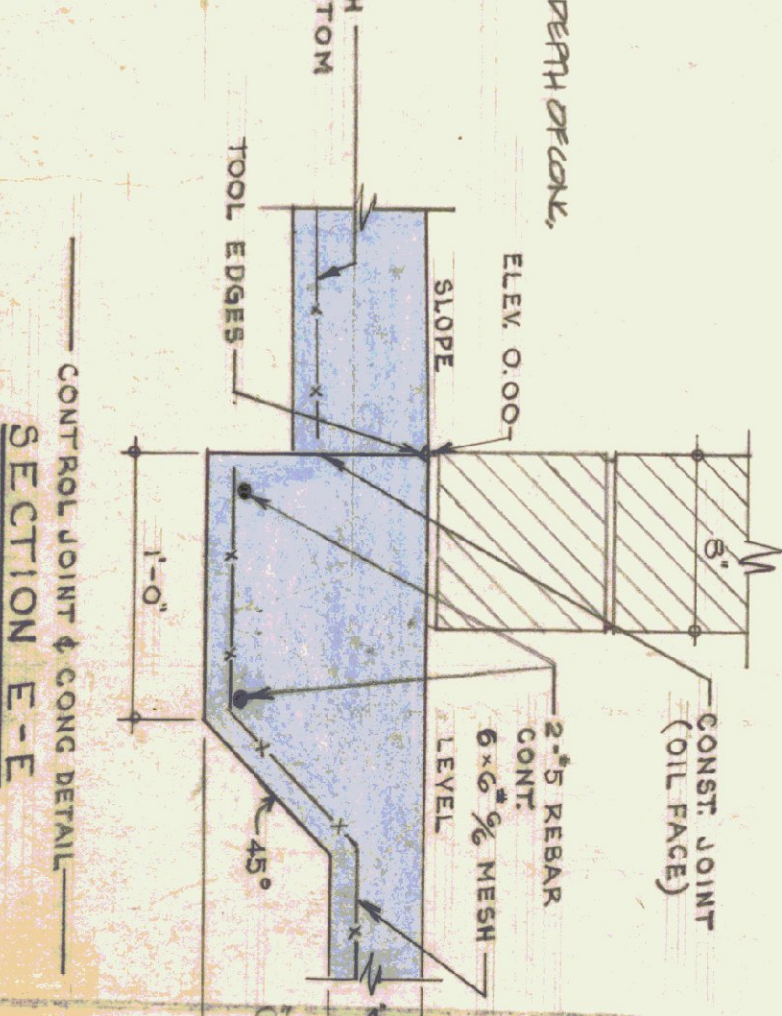
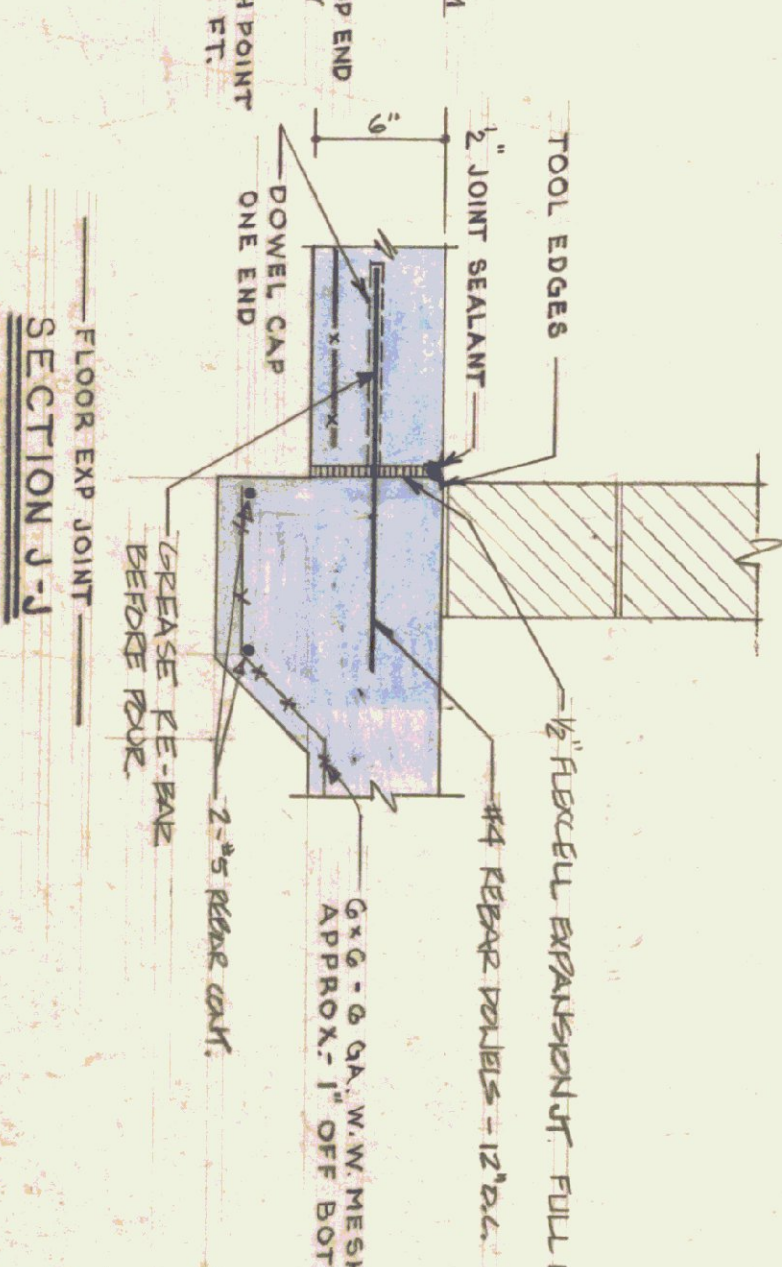
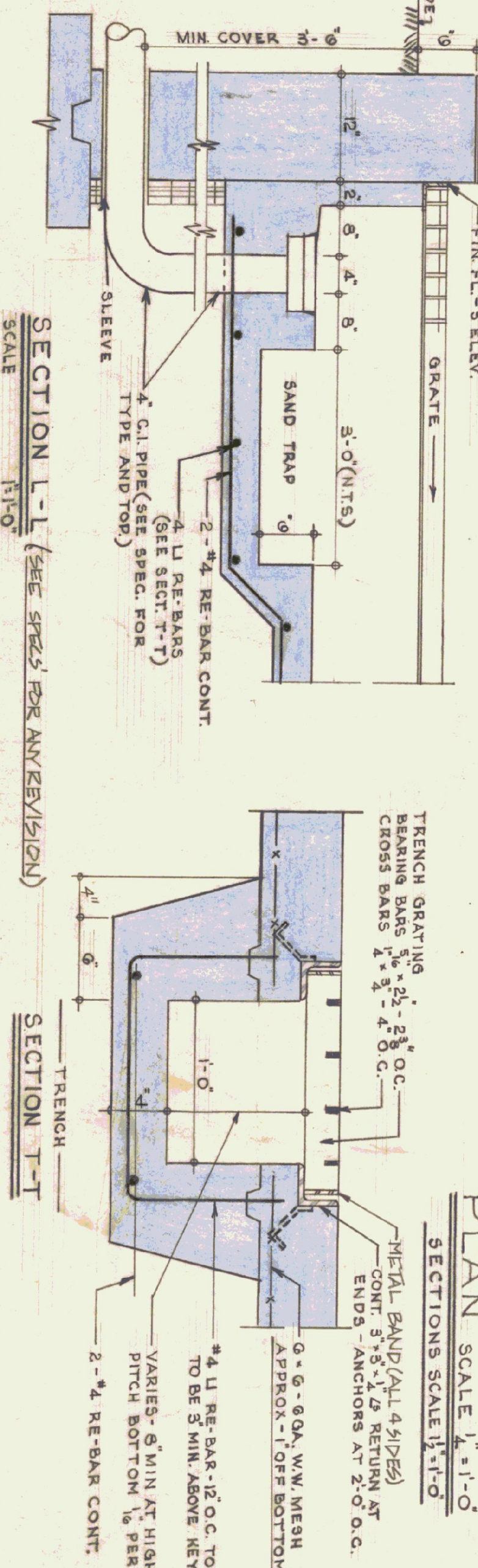
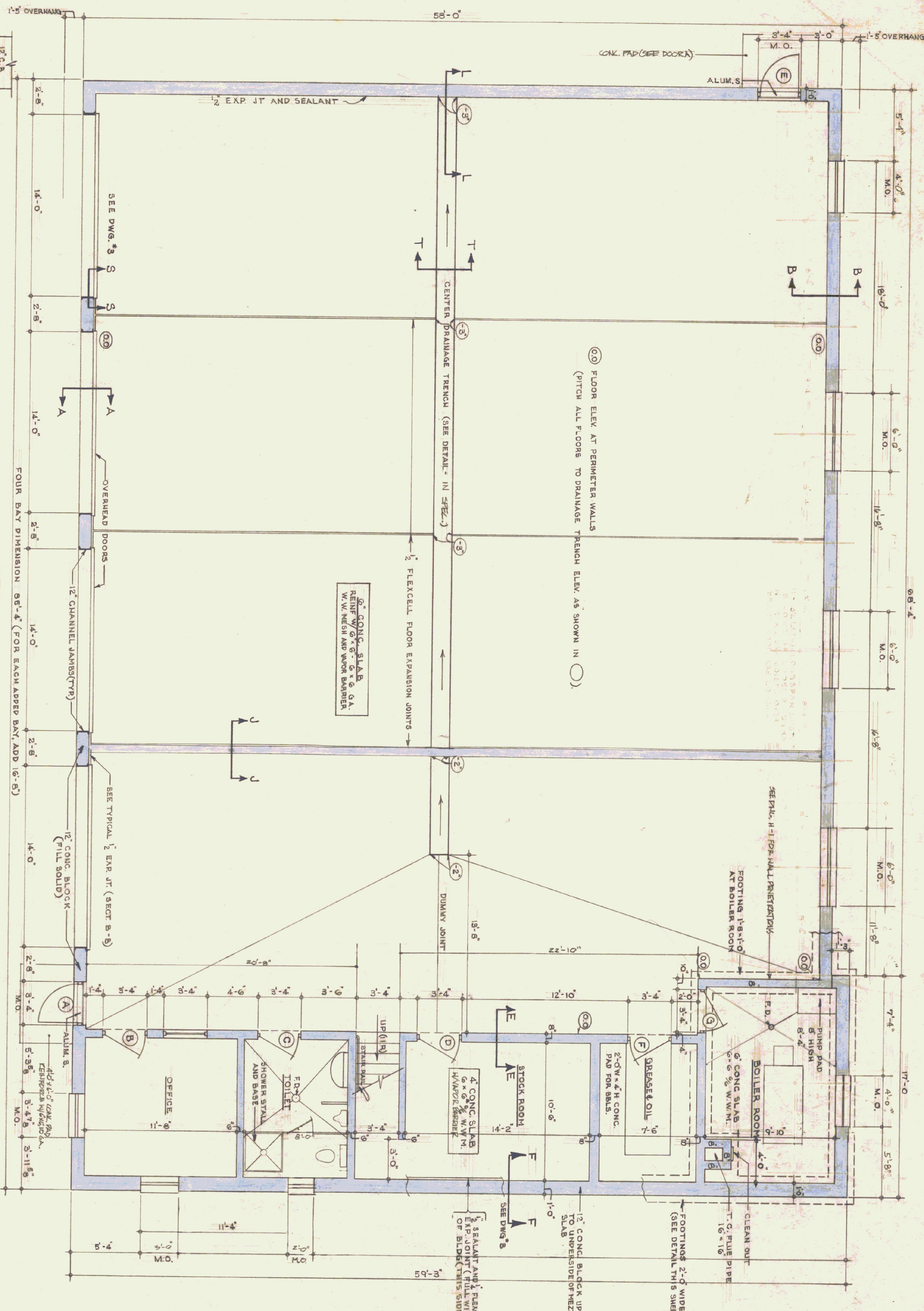


GENERAL NOTES

ALL CONCRETE SHALL BE 3000 PSI AT 28 DAYS/MAX. SLUMP OF 4".
 ALL EXPOSED CONCRETE WALLS SHALL HAVE LEVY JOINT IN EXPOSED FACE.
 ALL CONSTRUCTION JOINTS FOR WALLS TO HAVE LEVY JOINT IN EXPOSED FACE.
 ALL CONCRETE TO BE CURED 5/8 TO BE COVERED WITH SIALKRAFT 4105/57
 EXPANSION JOINTS TO HAVE TOoled EDGES.



STATE OF VERMONT
DIVISION OF STATE BUILDINGS
 AGENCY OF ADMINISTRATION
 VERMONT

Standard Four Bay Highway Garage Bldg.
FLOOR PLAN & FOUNDATION DETAILS

SCALE: As noted

REVISIONS	DATE	BY	REVISION
1	6-14-74	RLA	

TYPICAL FOUNDATION FOR ALL SIDES OF BLDG, EXCEPT AT DOORS - (SEE ABOVE FOR OTHER INFORMATION)

DATE: 10-18-74
 DRAWING BY: [Signature]
 STUDIO SEVEN INC.

DESIGNED BY: [Signature]
 APPROVED BY: [Signature]
 DWG. NO. A1