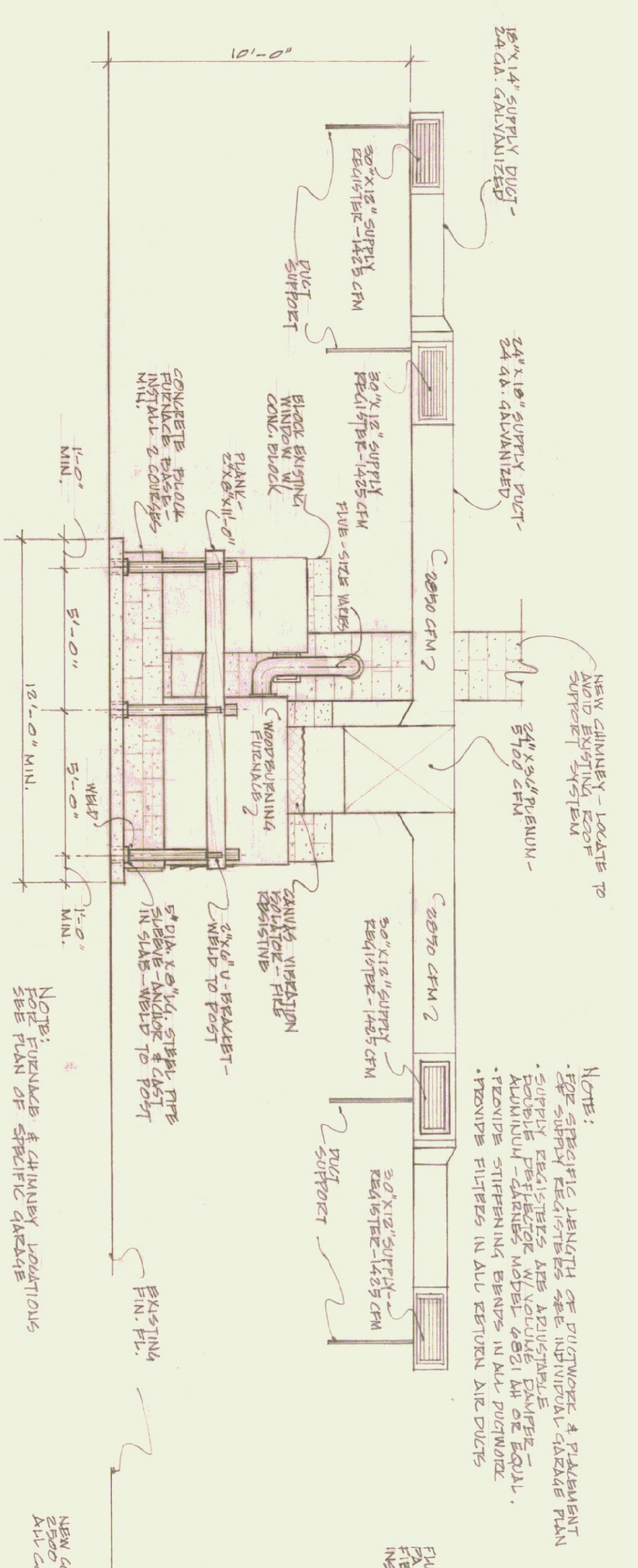
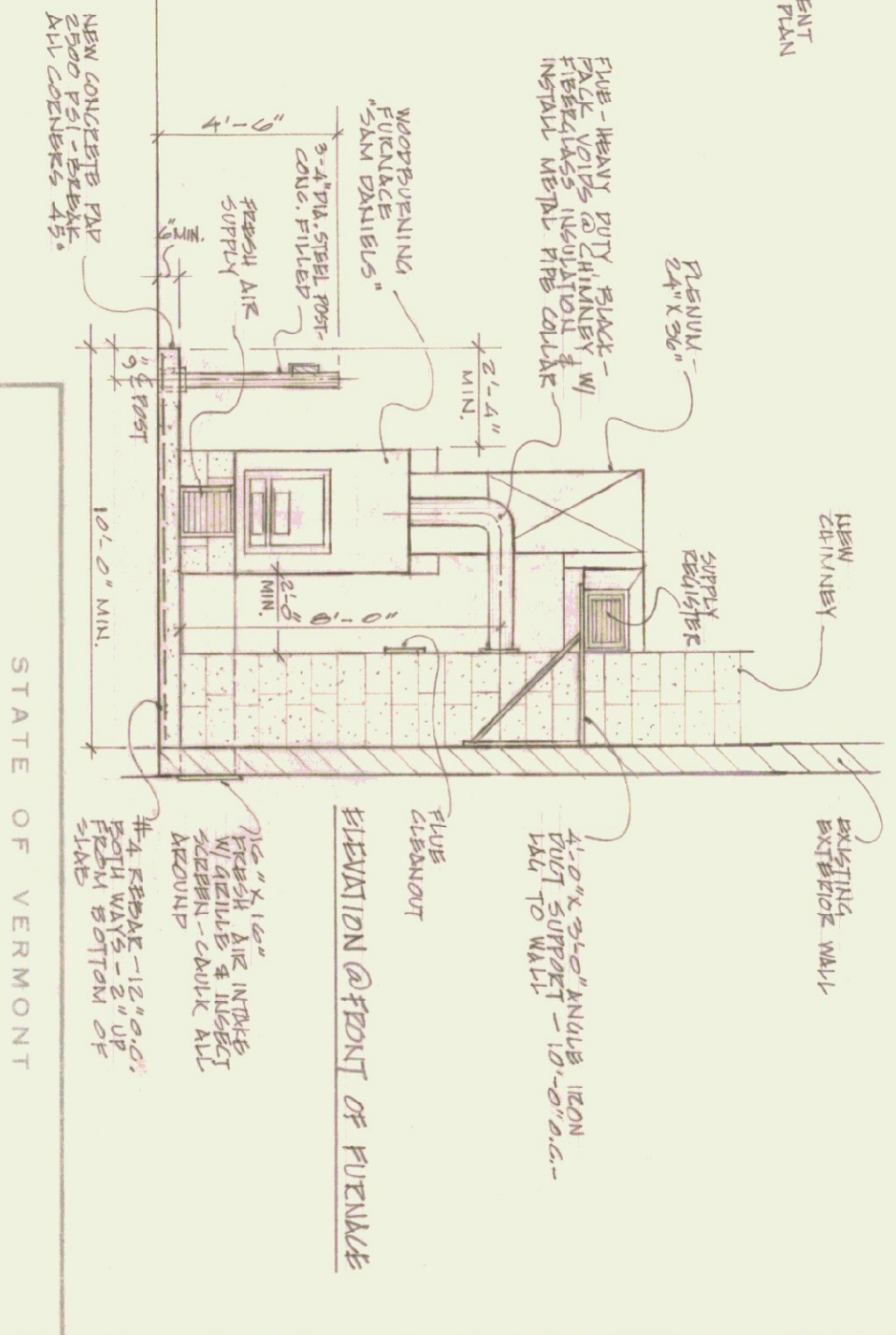


NOTE:  
 ALL ELECTRICAL WORK SHALL BE INSTALLED IN RMT CONDUIT. WIRE SHALL BE  
 1/2" DIA. MIN (3 WIRES) SUPPORTED EVERY 5'-0" MIN. PROVIDE NEW  
 PRESERVE NEW FOR VENTILATION. THESE WITH WIRING SHALL BE  
 INSTALLED IN RMT CONDUIT.



ELEVATION @ SIDE OF FURNACE



ELEVATION @ FRONT OF FURNACE

TYPICAL INSTALLATION  
 "SAM DANIELS" FURNACE  
 1/4" = 1'-0"

STATE OF VERMONT  
 DIVISION OF STATE BUILDINGS  
 AGENCY OF ADMINISTRATION  
 MONTPELIER, VERMONT

TYPICAL DETAILS  
 WOODWORKING FURNACE INSTALLATION  
 @ AGENCY OF TRANSPORTATION  
 GARAGES

DATE 9/22/60	REVISIONS DRAWN BY 10/1/60	DWG. NO.
DRAWN BY J. J. HARRIS	APPROVED BY [Signature]	3 OF 3