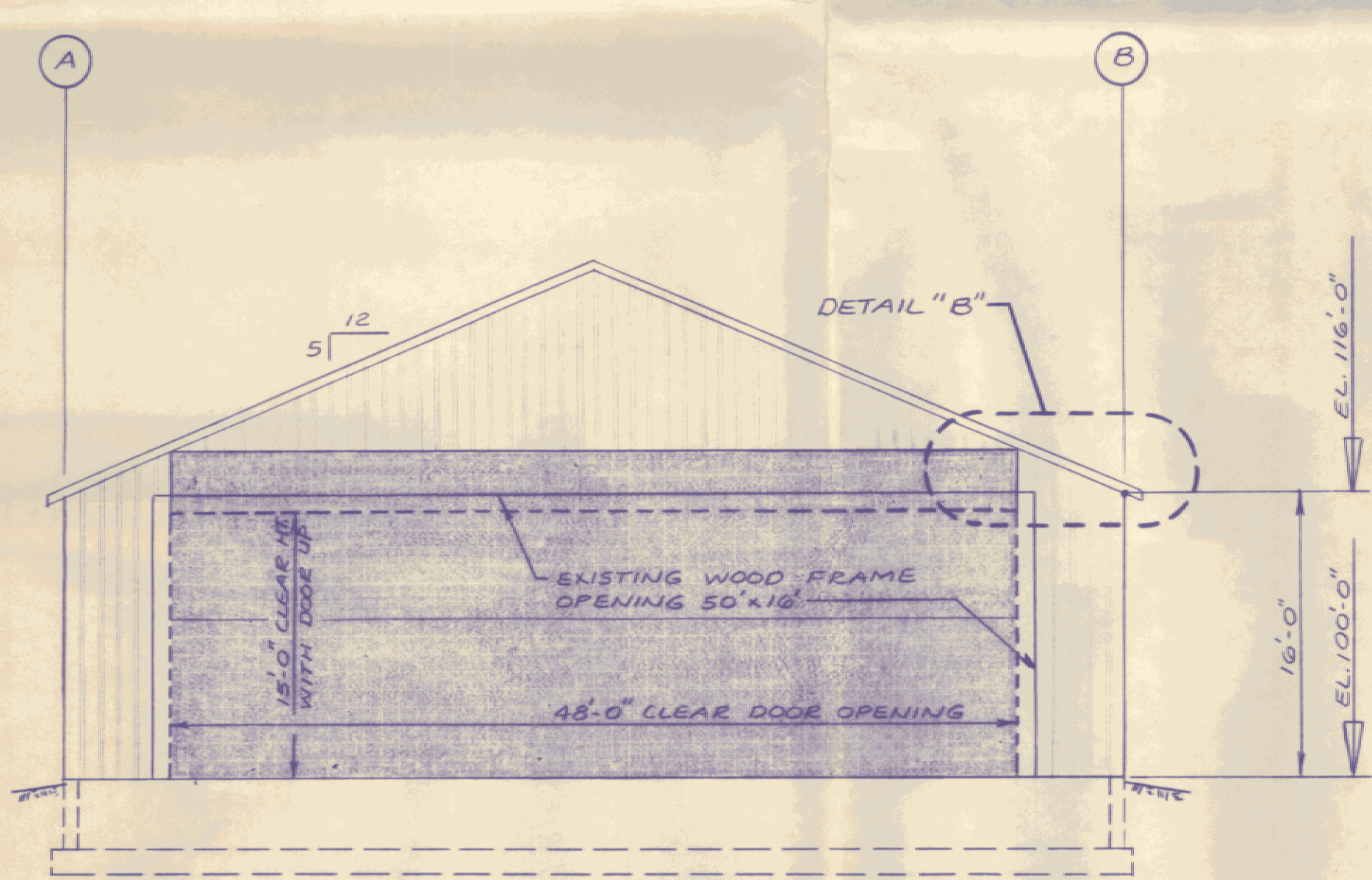
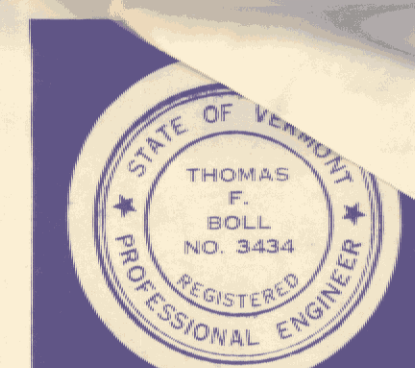
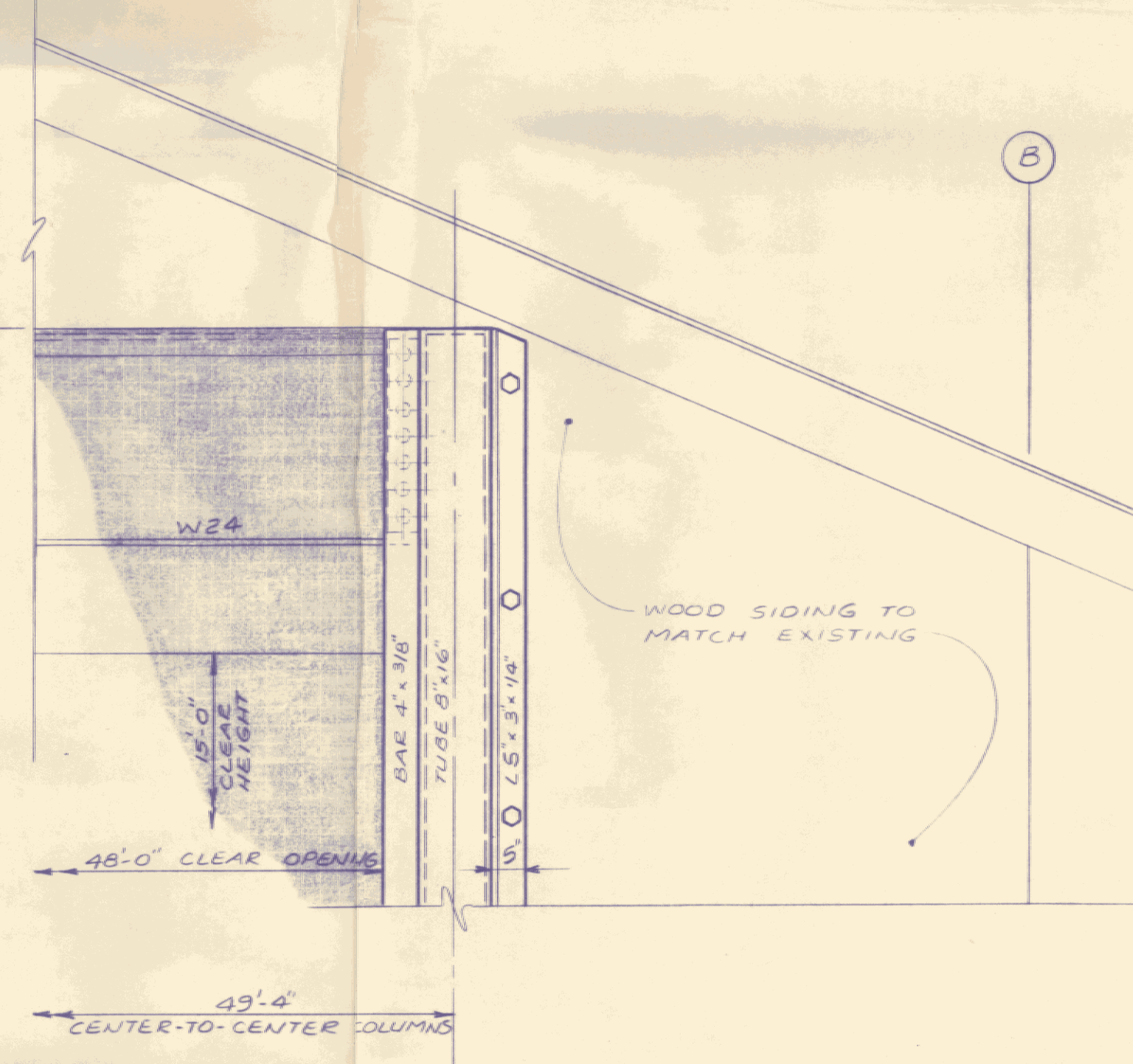
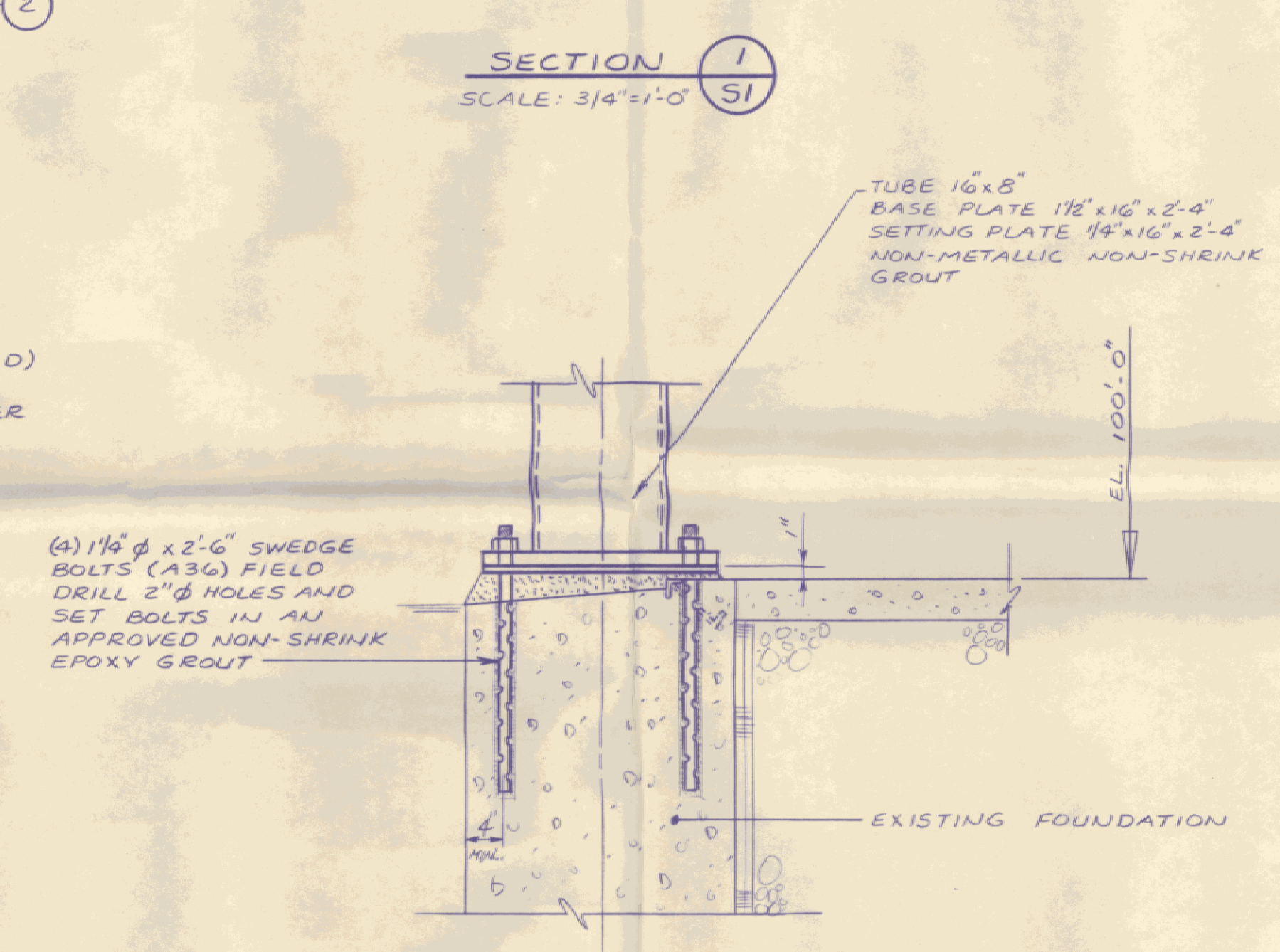
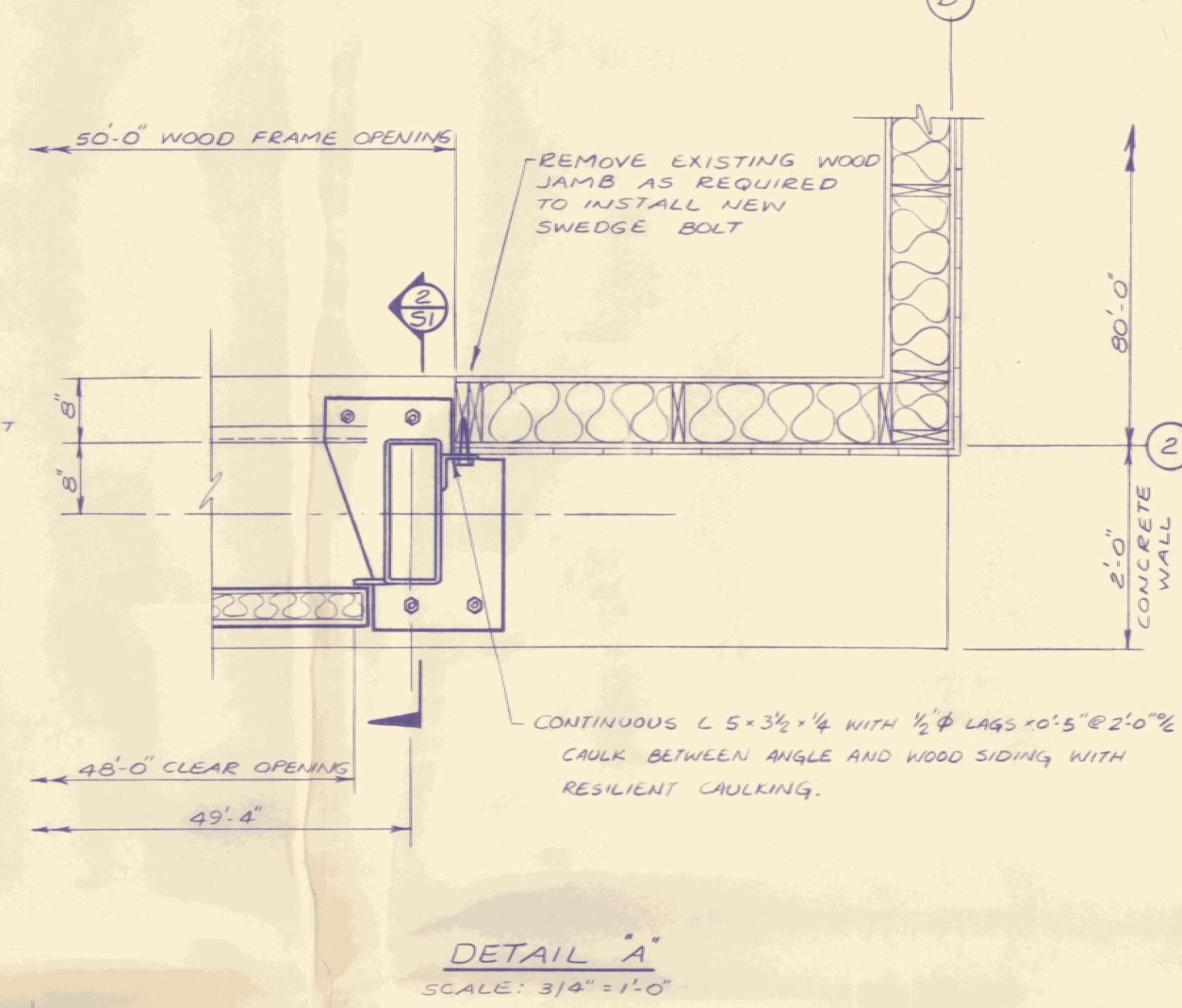
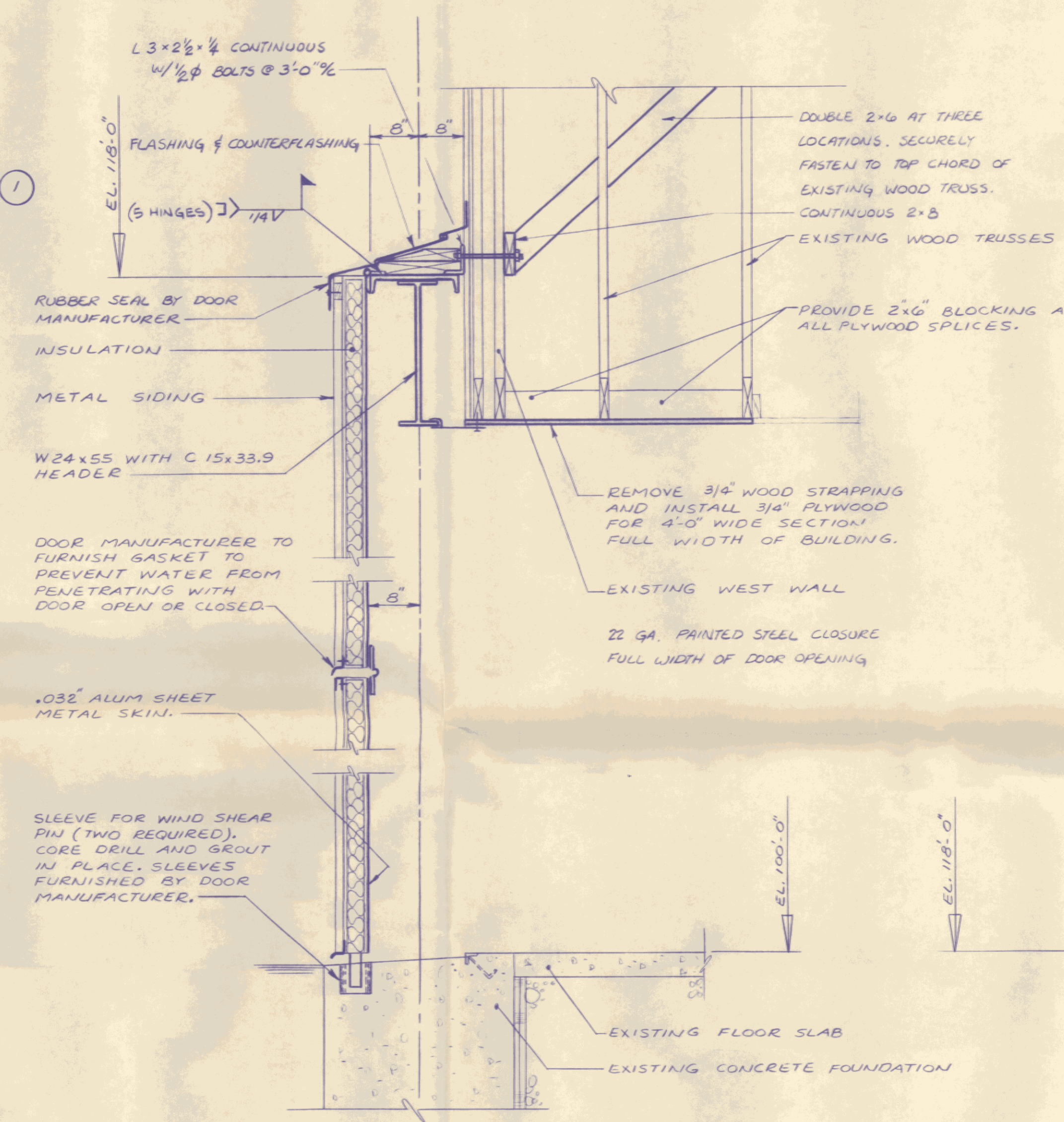


**PLAN**  
SCALE: 1/8"=1'-0"

- ELEVATION TOP OF EXISTING CONCRETE FLOOR SLAB = 100'-0" (ASSUMED)
- ELEVATION TOP OF NEW W24x55 TO BE 118'-0". PROVIDE 3/4" CAMBER FOR DEAD LOAD DEFLECTION.



**WEST ELEVATION**  
SCALE: 1/8"=1'-0"



No.	DATE	REVISION

**Lawes Consulting Engineers, Inc.**  
WILLISTON, VERMONT  
ROUTE 2A  
STATE OF VERMONT DIVISION OF BUILDINGS  
2 WESTERN AVENUE MONTPELIER, VERMONT 05602

HANGAR DOOR  
NEWPORT STATE AIRPORT  
NEWPORT, VERMONT

PLAN AND DETAILS

DRAWN	PROJ. No.
SOMA	8336
CHECKED	DATE
TFB	4-27-84

**S1**