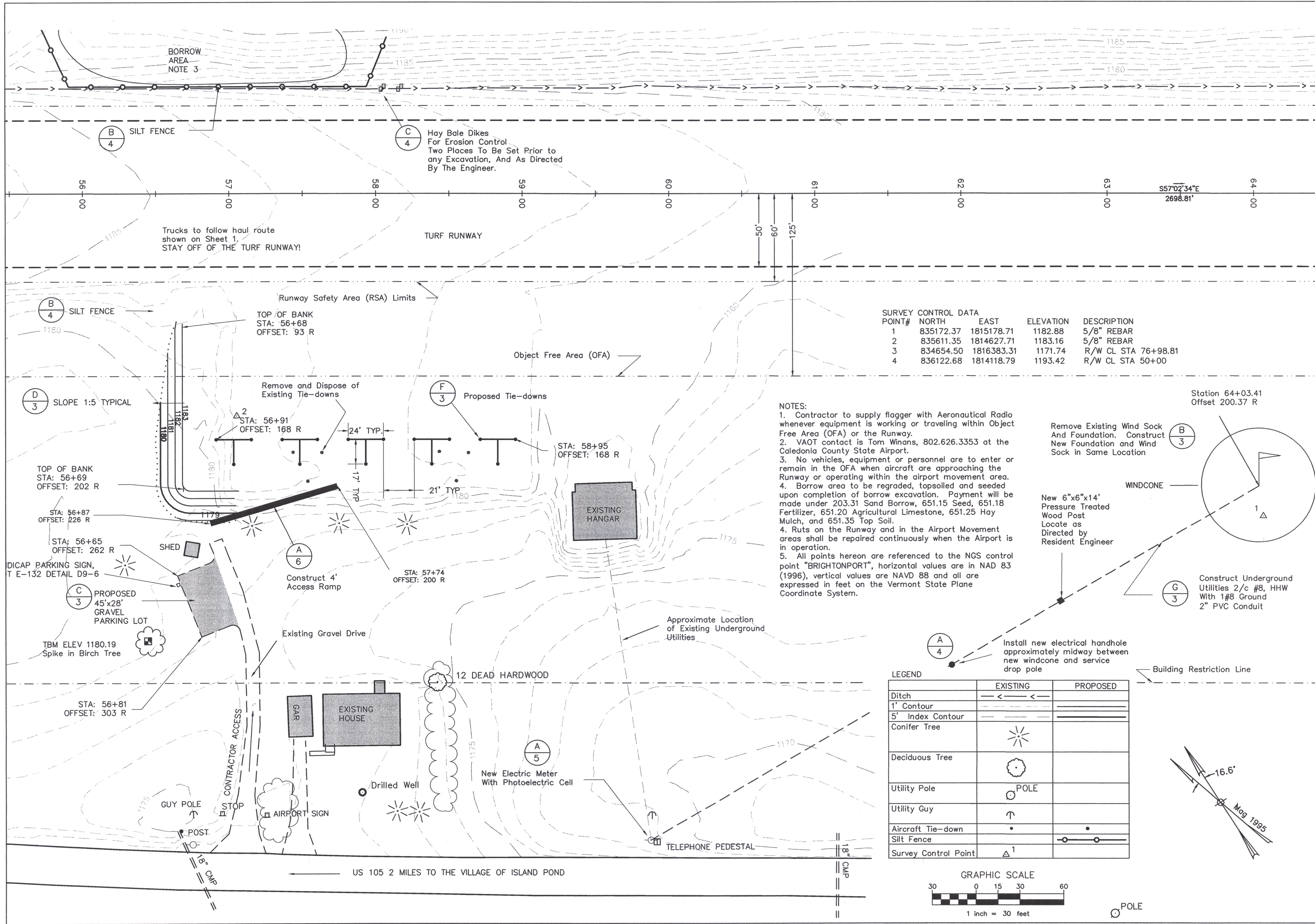


V:\John H. Boylan\Boylan Design 12-99\Design 12-99 sheet 2.dwg Fr 1 Mar 03 14:16:39 2000 Dufresne-Henry, Consulting Engineers
 HP DesignJet 1050C Hewlett-Packard HP-GL/2 devices, ADI 4.3 (v4.1) - Jul 22 1998



SURVEY CONTROL DATA

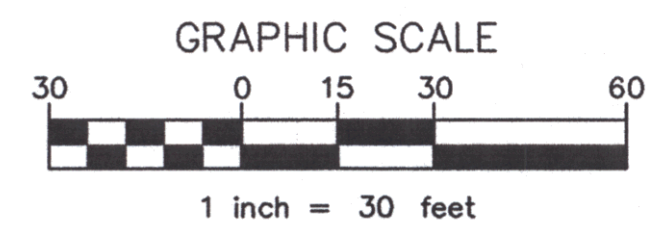
POINT#	NORTH	EAST	ELEVATION	DESCRIPTION
1	835172.37	1815178.71	1182.88	5/8" REBAR
2	835611.35	1814627.71	1183.16	5/8" REBAR
3	834654.50	1816383.31	1171.74	R/W CL STA 76+98.81
4	836122.68	1814118.79	1193.42	R/W CL STA 50+00

NOTES:

- Contractor to supply flagger with Aeronautical Radio whenever equipment is working or traveling within Object Free Area (OFA) or the Runway.
- VAOT contact is Tom Winans, 802.626.3353 at the Caledonia County State Airport.
- No vehicles, equipment or personnel are to enter or remain in the OFA when aircraft are approaching the Runway or operating within the airport movement area.
- Borrow area to be regraded, topped and seeded upon completion of borrow excavation. Payment will be made under 203.31 Sand Borrow, 651.15 Seed, 651.18 Fertilizer, 651.20 Agricultural Limestone, 651.25 Hay Mulch, and 651.35 Top Soil.
- Ruts on the Runway and in the Airport Movement areas shall be repaired continuously when the Airport is in operation.
- All points hereon are referenced to the NGS control point "BRIGHTONPORT", horizontal values are in NAD 83 (1996), vertical values are NAVD 88 and all are expressed in feet on the Vermont State Plane Coordinate System.

LEGEND

	EXISTING	PROPOSED
Ditch	—<—<	—>>—>
1' Contour	—	—
5' Index Contour	—	—
Conifer Tree	☼	
Deciduous Tree	⊙	
Utility Pole	⊙ POLE	
Utility Guy	↑	
Aircraft Tie-down	•	•
Silt Fence	—	—
Survey Control Point	△ 1	



POLE



Date	By	Description	Rev.

John H. Boylan State Airport
Contract #0284038

SITE PLAN

Brighton

Project No.	8180066	Date	January 2000
Prof. Manager	mc	Checked By	gd
Proj. Designer	gr	Scale	1"=30'
Drawn By	gr	Approved	mc
2			
Sheet 2 of 6			