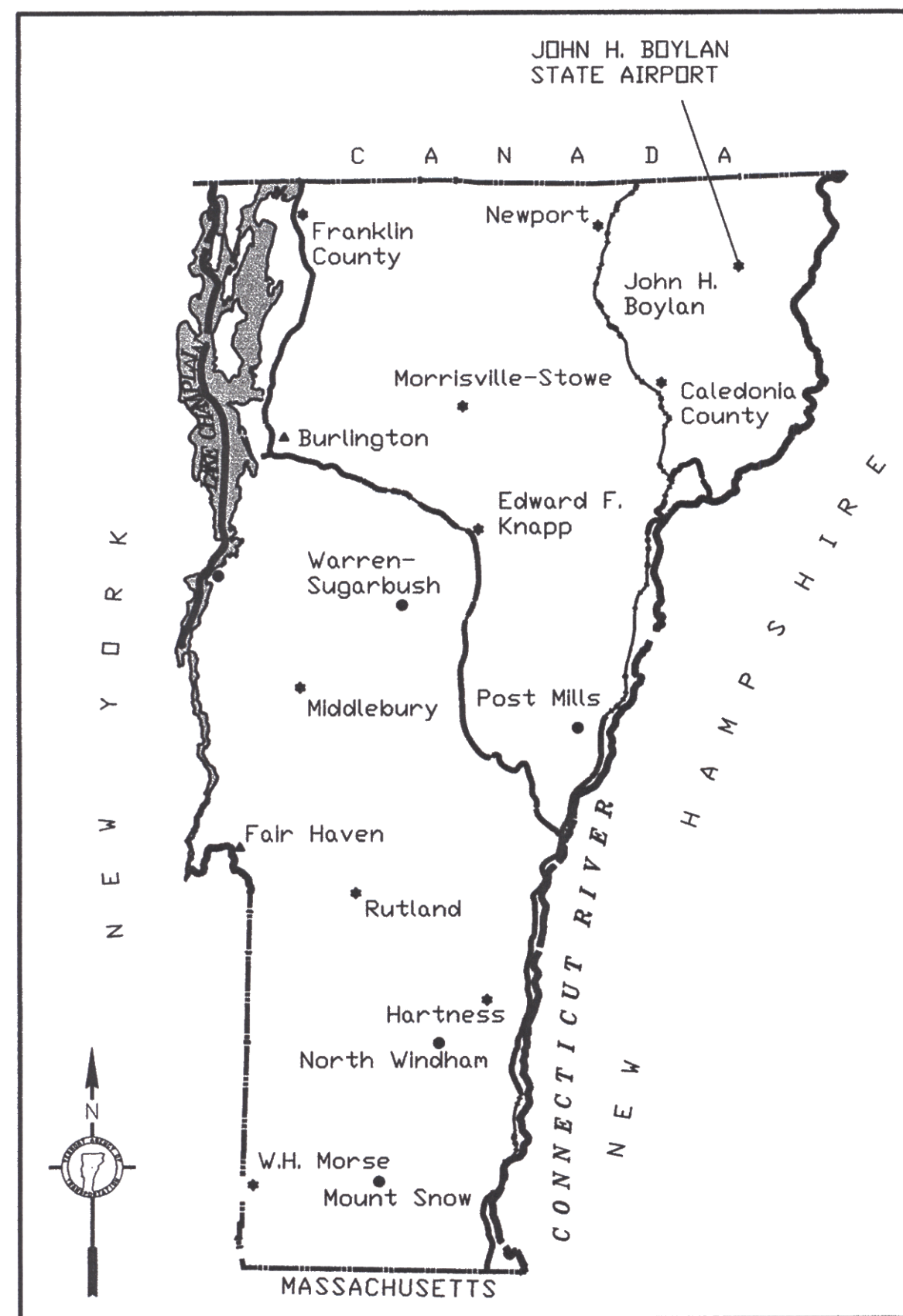
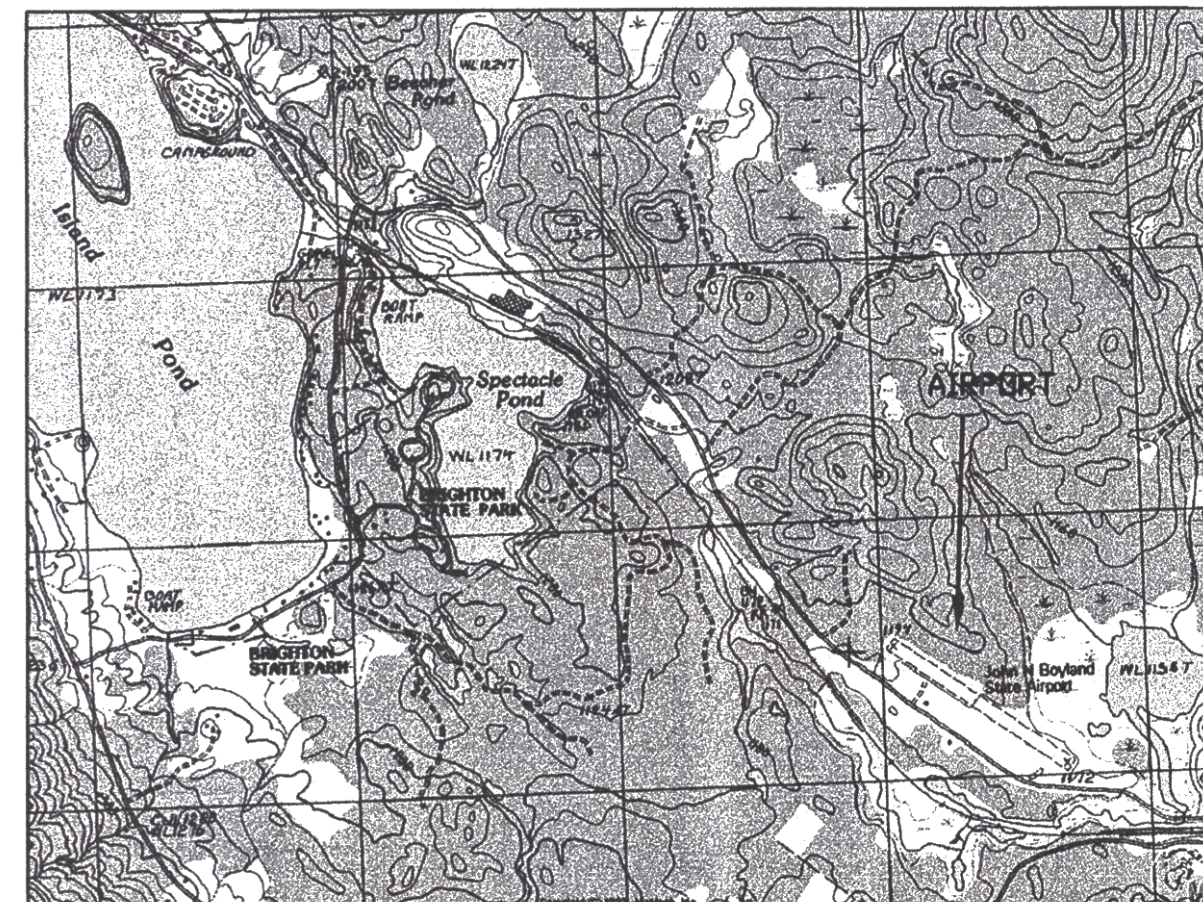


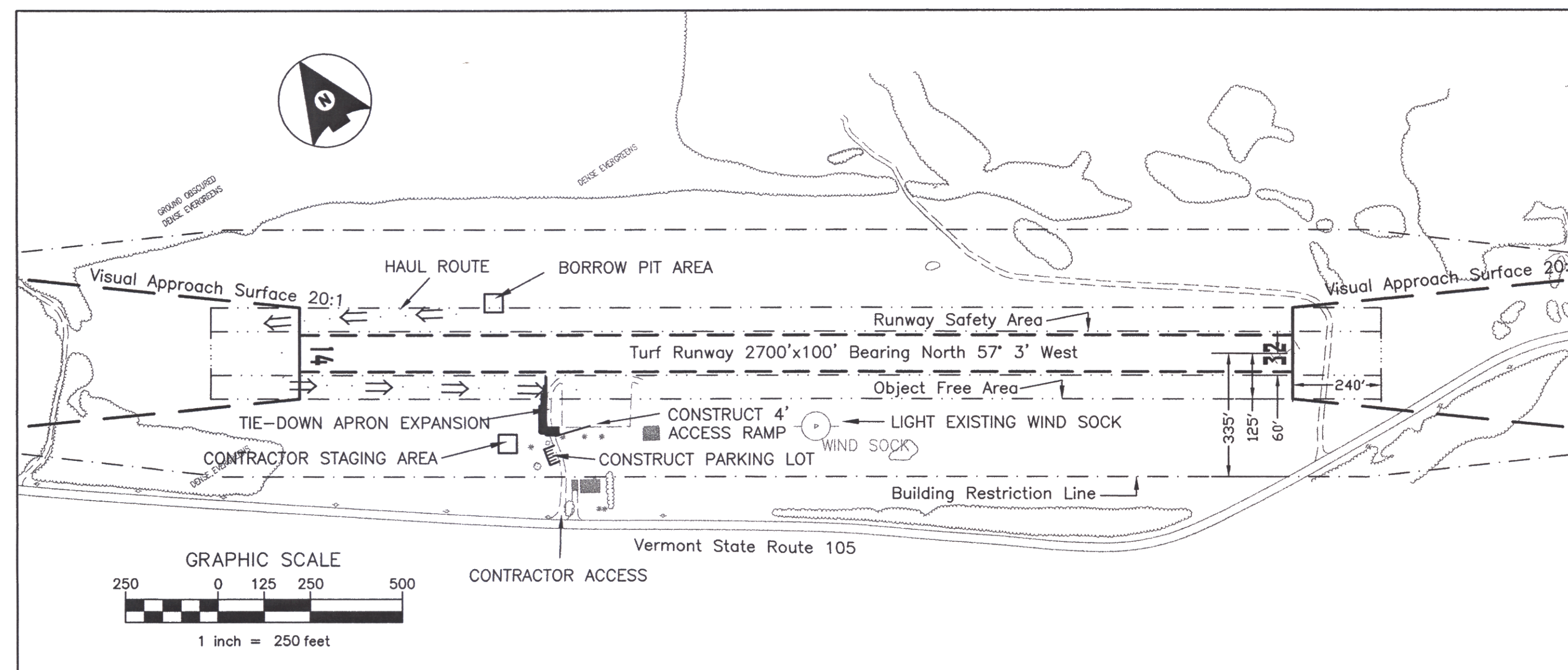
JOHN H. BOYLAN STATE AIRPORT VAOT CONTRACT #0284038 AIRPORT IMPROVEMENTS TO INCLUDE: EXPANSION OF EXISTING TIEDOWN APRON, CONSTRUCTION OF AUTO PARKING AREA, AND LIGHTED WIND SOCK



LOCATION MAP



VICINITY MAP



ITEM/DESCRIPTION	ESTIMATE QUANTITY
203.15 COMMON EXCAVATION	200 CY
203.16 SOLID ROCK EXCAVATION	10 CY
203.31 SAND BORROW	635 CY
301.26 SUBBASE OF CRUSHED GRAVEL, FINE GRADED	170 CY
609.10 DUST CONTROL WITH WATER	1 MGAL
635.10 MOBILIZATION	1 EA
651.15 SEED	25 LBS
651.18 FERTILIZER	200 LBS
651.20 AGRICULTURAL LIMESTONE	0.7 TON
651.25 HAY MULCH	0.7 TON
651.26 HAY BALES	10 EA
651.35 TOPSOIL	125 CY
649.20 GEOTEXTILE FABRIC FOR SILT FENCE	180 SY
658** ACCESS RAMP	1 EA
854.07 AIRCRAFT TIE DOWN ANCHOR	15 EA
864** ILLUMINATED WIND CONE	1 EA

QUANTITIES

TOWN OF BRIGHTON
ESSEX COUNTY
VERMONT

MARCH 2000



Dufresne-Henry

SOUTH BURLINGTON, VT 05407

Tel. (802) 864-0223 • FAX (802) 864-0165 • www.d-hinc.com

SHEET	TITLE
1	TITLE SHEET
2	SITE PLAN
3	DETAILS
4	GENERAL NOTES
5	ELECTRICAL DETAILS
6	ACCESS RAMP DETAILS

VAOT STANDARD DRAWINGS

1	GENERAL MOTORIST SERVICES SIGN DETAILS, E-132
---	--

INDEX OF SHEETS

OFFICES:

No. Springfield, Vermont
Montpelier, Vermont
So. Burlington, Vermont
Williston, Vermont
Claremont, New Hampshire
Manchester, New Hampshire
Portland, Maine
Westford, Massachusetts
Greenfield, Massachusetts
Boston, Massachusetts
Port Charlotte, Florida
Sarasota, Florida

ENGINEERING DISCIPLINES

Civil
Electrical
Environmental
Industrial
Mechanical
Solid Waste
Structural
Transportation

ASSOCIATED DISCIPLINES

Construction Management
Site Assessments
Surveying
Wastewater Contract Operations

LANDSCAPE ARCHITECTURE

Public Involvement Strategies
Market & Fiscal Impact Analysis
Waterfront Master Planning
Urban Planning & Design
Harbor Management Planning
Local, State and Federal Permitting

APPLIED SCIENCES

Geologic
Hydrologic
Water Quality