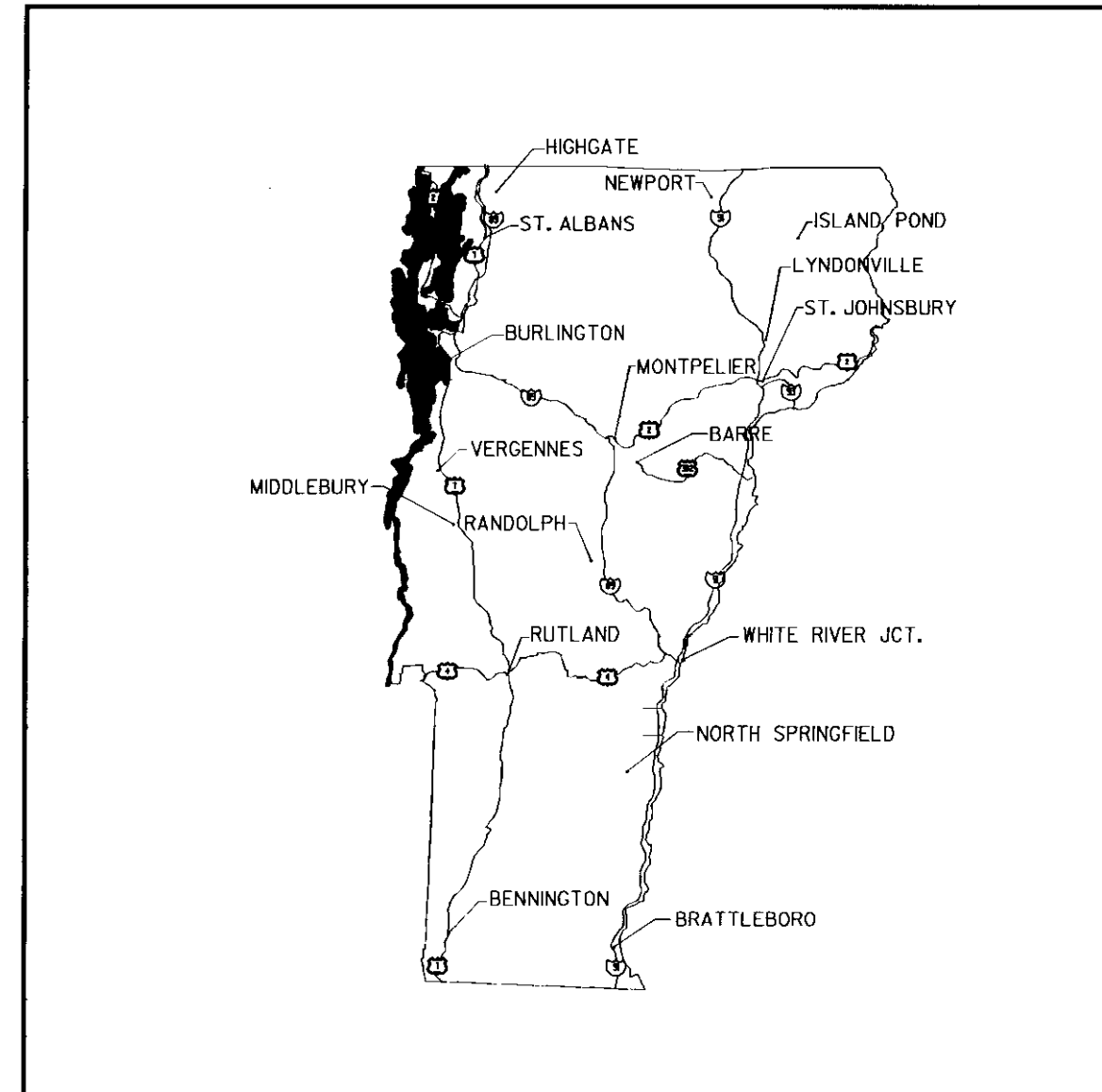
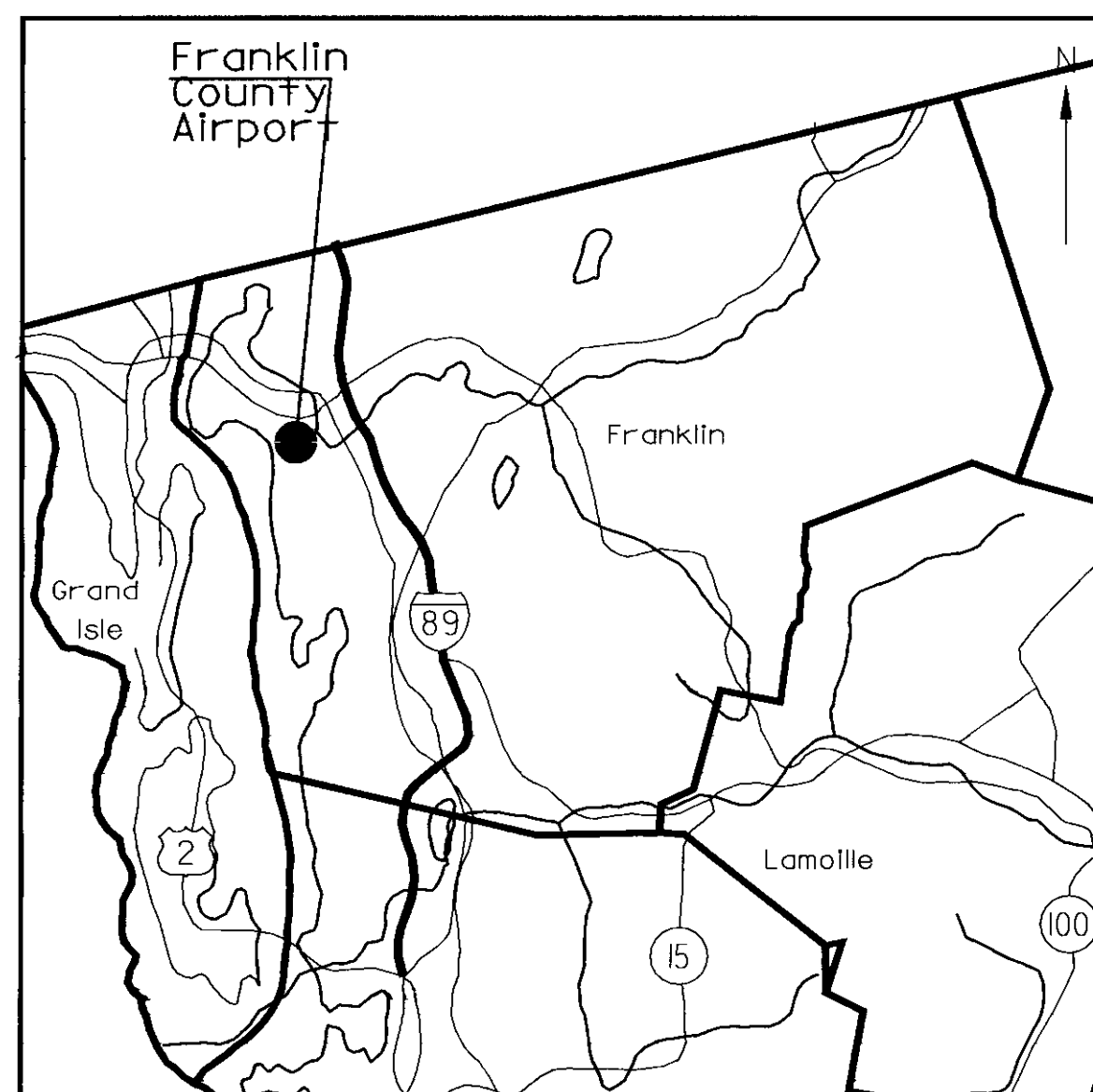


# AIRPORT LAYOUT PLAN UPDATE

## FRANKLIN COUNTY STATE AIRPORT HIGHGATE, VERMONT



LOCATION MAP



VICINITY MAP

SHEET	TITLE
1	COVERSHEET
2	EXISTING ALP
3	ULTIMATE ALP
4	TERMINAL AREA PLAN
5	PLAN & PROFILE
6	FAR PART 77
7	LAND USE PLAN

INDEX OF SHEETS

MAY 2000



OFFICES:  
 No. Springfield, Vermont  
 Montpelier, Vermont  
 Manchester, New Hampshire  
 Portland, Maine  
 Westford, Massachusetts  
 Greenfield, Massachusetts  
 Boston, Massachusetts  
 Port Charlotte, Florida  
 Sarasota, Florida  
 Naples, Florida  
 Saratoga Springs, New York  
 Webster-Martin division  
 So. Burlington, Vermont

ENGINEERING DISCIPLINES  
 Civil  
 Electrical  
 Environmental  
 Industrial  
 Mechanical  
 Solid Waste  
 Structural  
 Transportation  
 Wastewater  
 Water

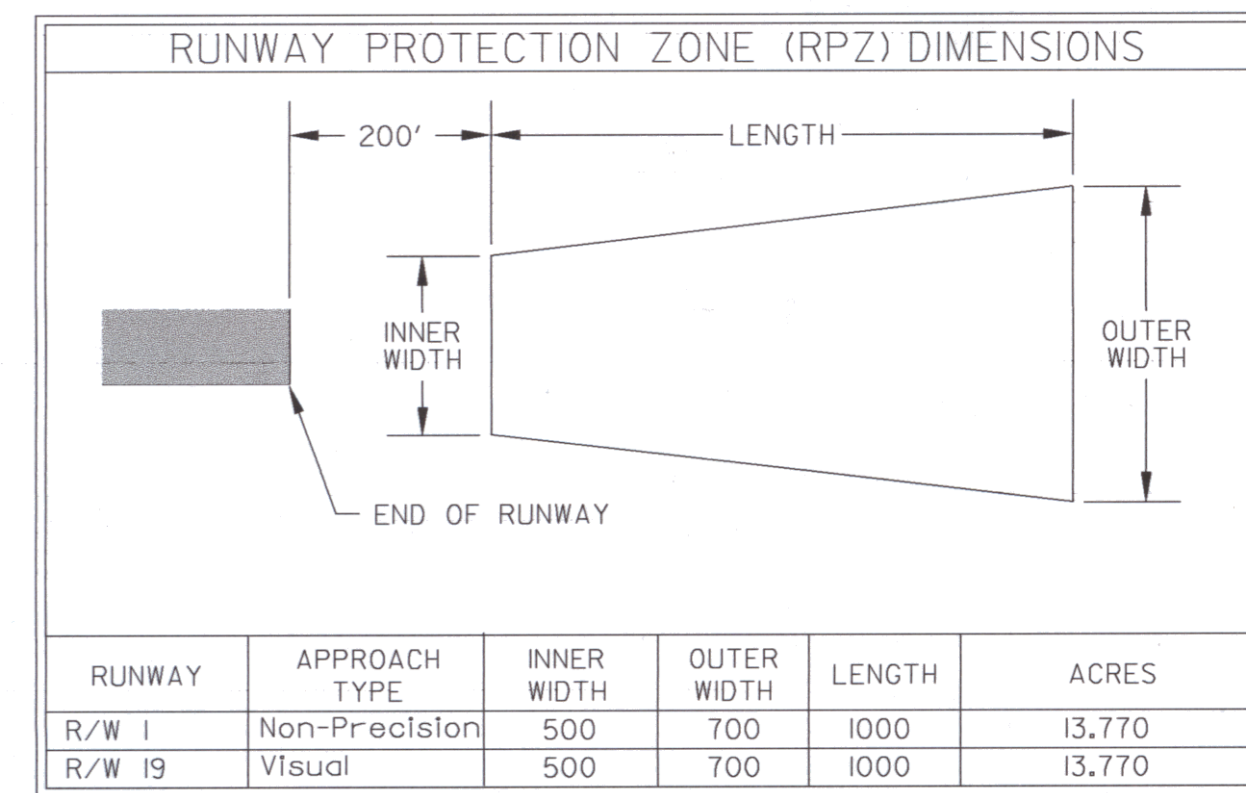
ASSOCIATED DISCIPLINES  
 Construction Management  
 Site Assessments  
 Surveying  
 APPLIED SCIENCES  
 Geologic  
 Hydrologic  
 Water Quality

AIRPORT DATA	EXISTING
AIRPORT ELEVATION	228
AIRPORT REFERENCE POINT	N 44° 56' 25" E 73° 05' 51"
MEAN MAX. TEMP. (HOTTEST MO.)	80° F
TAXIWAY LIGHTING	--
TAXIWAY MARKING	--
AIRPORT/TERMINAL NAVAIDS	GPS/VOR
AIRPORT REFERENCE CODE (ARC)	B-II
ACREAGE OWNED IN FEE SIMPLE	363 Acres
ACREAGE OWNED IN EASEMENT	53 Acres
USE/OWNERSHIP	General Aviation/State

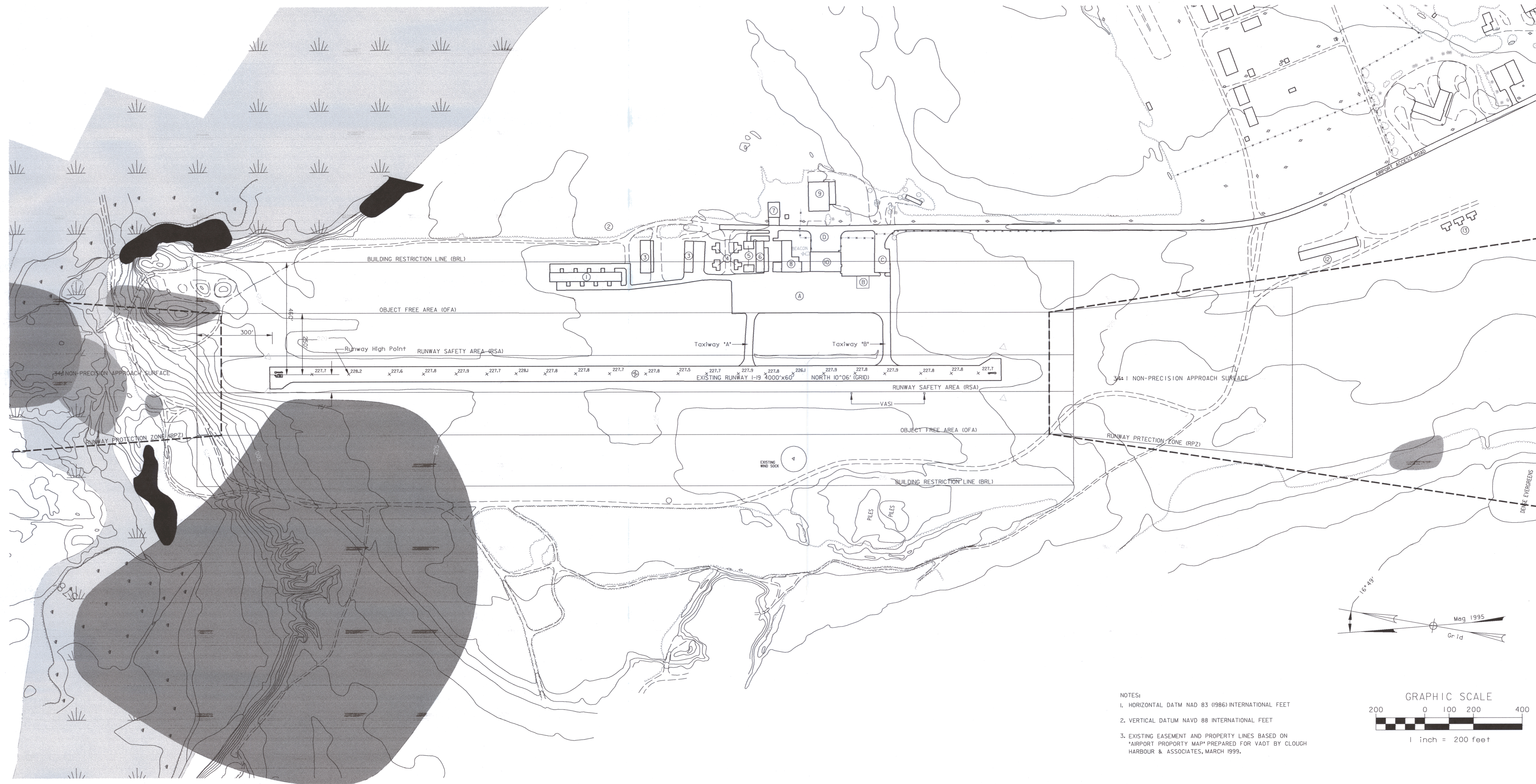
EXISTING	BUILDINGS
①	T-Hangar 10 Units
②	48' x 48' Hangar (Under Construction)
③	Hangar 3 Units Each
④	T-Hangars
⑤	GA Hangar
⑥	Hangar 3 Units
⑦	Hangar
⑧	Prestige Paint Shop Hangar
⑨	Storage Building
⑩	Terminal / Hangar
⑪	T-Hangar
⑫	T-Hangars
EXISTING	TERMINAL AREA PAVEMENT
A	Main Hangar
B	Fuel Apron
C	South Apron
D	Auto Parking

LEGEND	EXISTING
GROUND CONTOUR	190
AIRPORT PROPERTY	
AVIGATION EASEMENT	
BUILDING RESTRICTION LINE (BRL) *	
PART 77 APPROACH SURFACE	
OBSTACLE FREE AREA (OFA)	
RUNWAY SAFETY AREA (RSA)	
RUNWAY SAFETY AREA IMPROVEMENTS	N/A
RUNWAY PROTECTION ZONE (RPZ)	
TREE LINE	
SECURITY FENCE	
AIRPORT REFERENCE POINT	⊗
SWALE/DITCH	
R/W END IDENTIFIER LIGHTS (REIL)	▷
WETLAND BOUNDARY	
UNIMPROVED ROADWAYS / RUNWAY	
PAVEMENT	
AIRPORT BUILDINGS	
POTENTIAL EXISTING OBSTRUCTIONS	
POTENTIAL ARCHAEOLOGICAL IMPACT	

\* ASSUMED BUILDING HEIGHT 30 FEET



RUNWAY DATA	EXISTING	
PAVEMENT STRENGTH	I	19
APPROACH SURFACES	I2,500 SW 54d	I2,500 SW Visual 20d
RUNWAY MARKINGS	Visual	Visual
RUNWAY LIGHTING	MRL	MRL
RUNWAY NAVAIDS	GPS	VORTAC
EFFECTIVE GRADIENT	0.0%	
RUNWAY END ELEVATIONS	227.54	227.61
RUNWAY END COORDINATES	N 44° 56' 40" W 73° 05' 55"	N 44° 56' 10" W 73° 05' 47"
RUNWAY LENGTH	3000'	3000'
RUNWAY WIDTH	60'	60'
EXTENDED RSA COMPLIANCE	YES	NO



	By _____ Date _____
	Description _____
	Rev. _____
	VERMONT _____

FRANKLIN STATE AIRPORT

## EXISTING AIRPORT LAYOUT PLAN

HIGHGATE

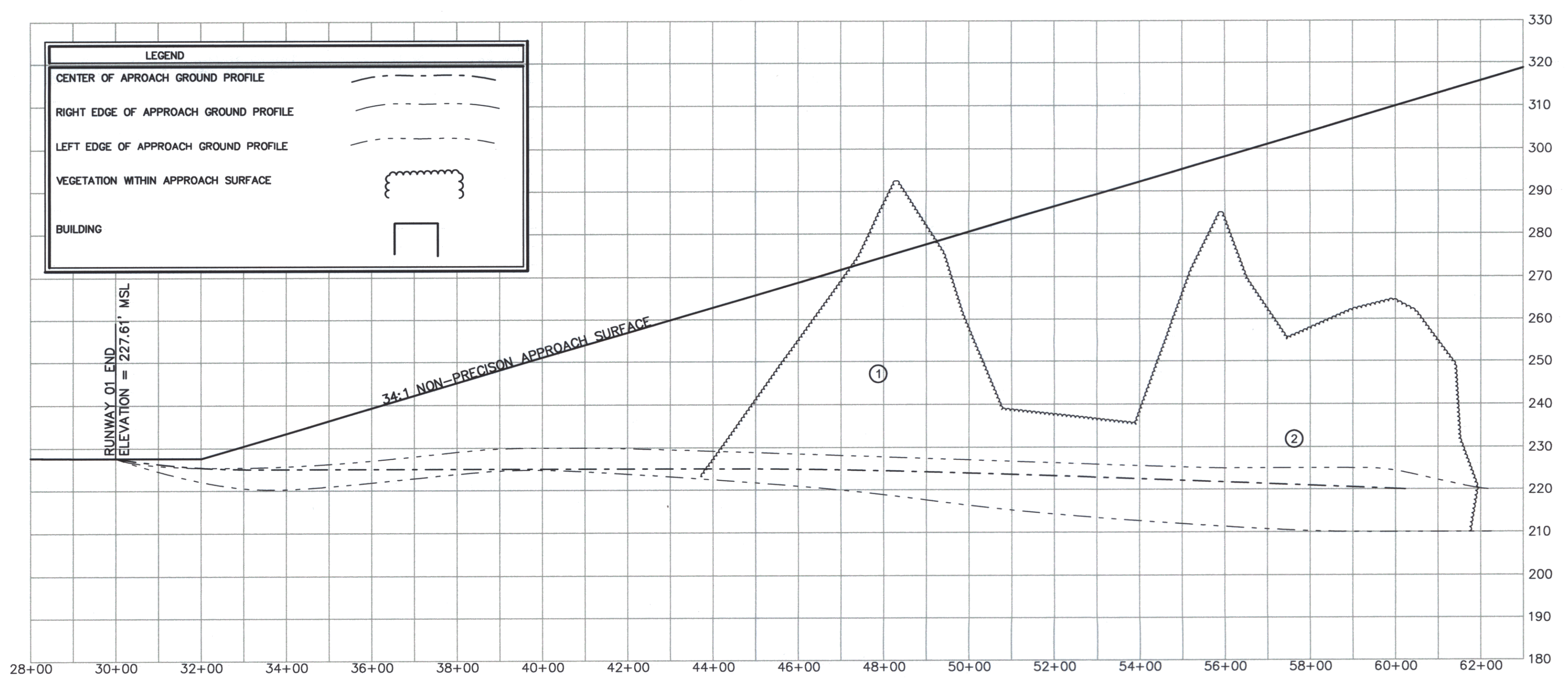
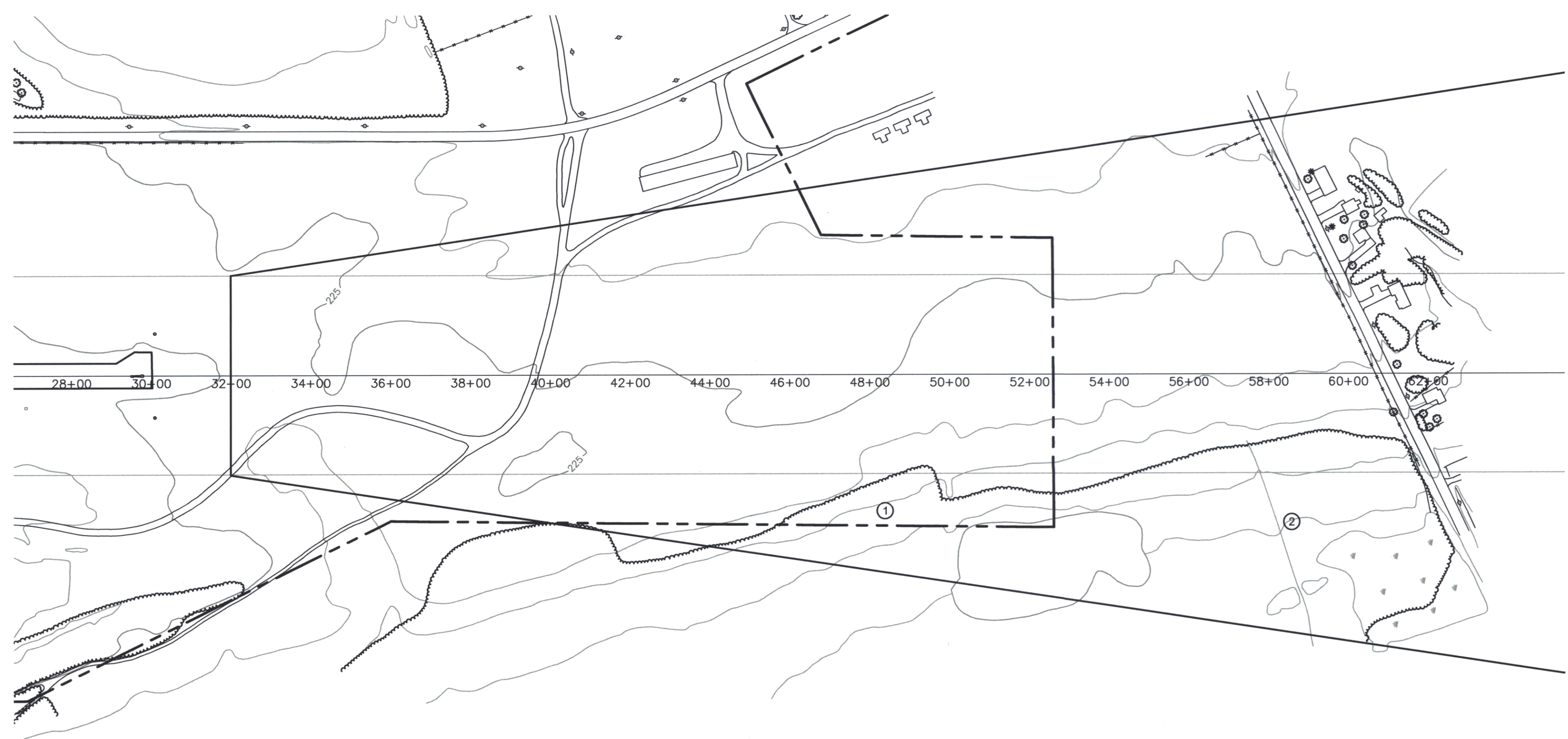
Project No.	8190014	Project Manager	MC	Project Designer	JMW	Checked By	MS	Scale	1"=200'	Approved	11-9-99
<p>GRAPHIC SCALE</p> <p>1 inch = 200 feet</p>											

Sheet 2 of 7

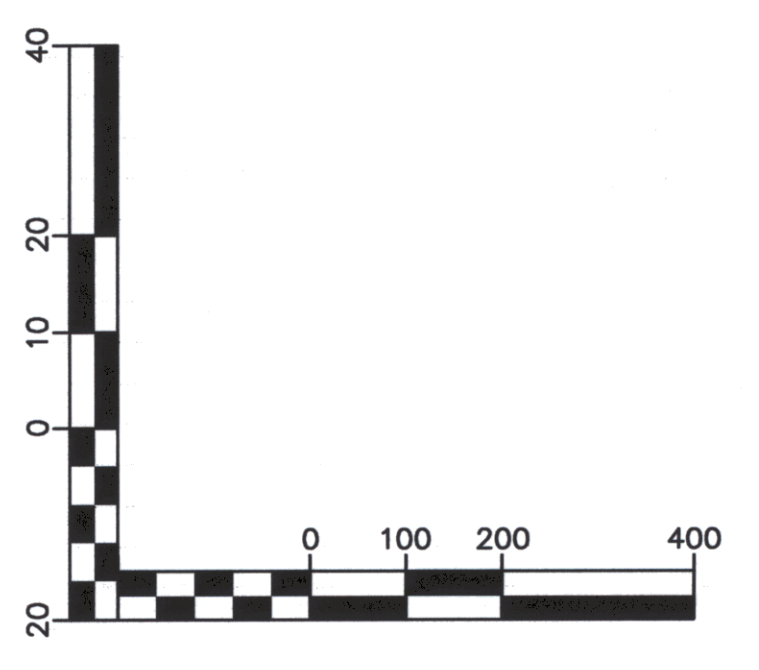








LEGEND	
CENTER OF APPROACH GROUND PROFILE	
RIGHT EDGE OF APPROACH GROUND PROFILE	
LEFT EDGE OF APPROACH GROUND PROFILE	
VEGETATION WITHIN APPROACH SURFACE	
BUILDING	

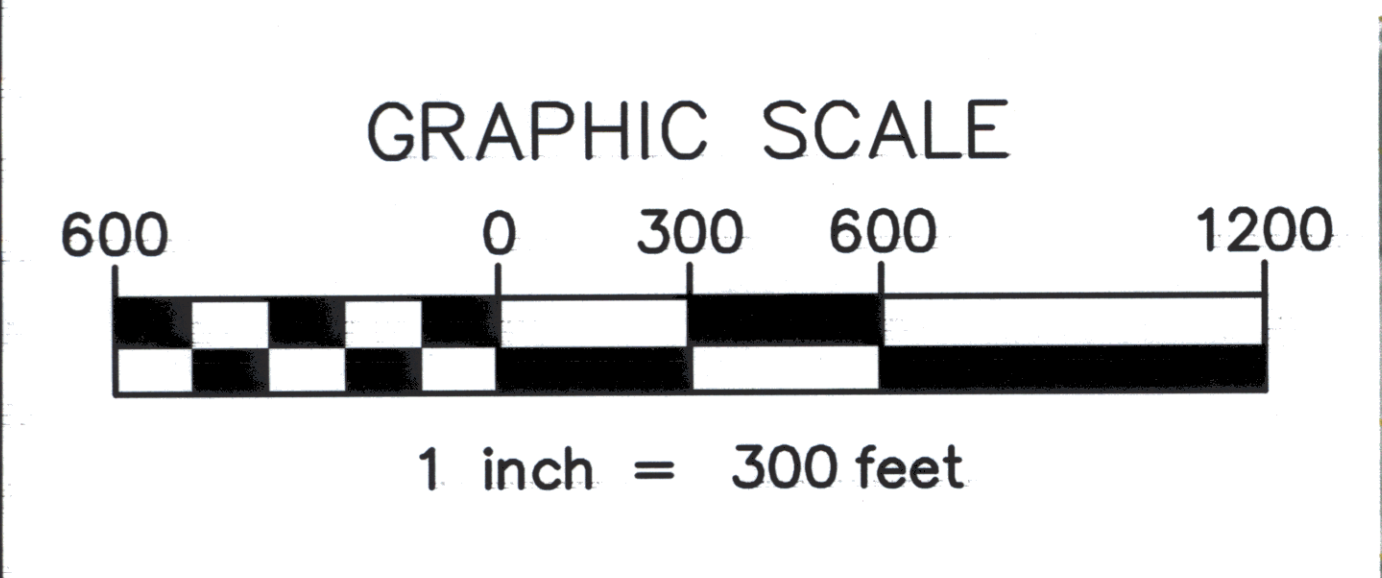
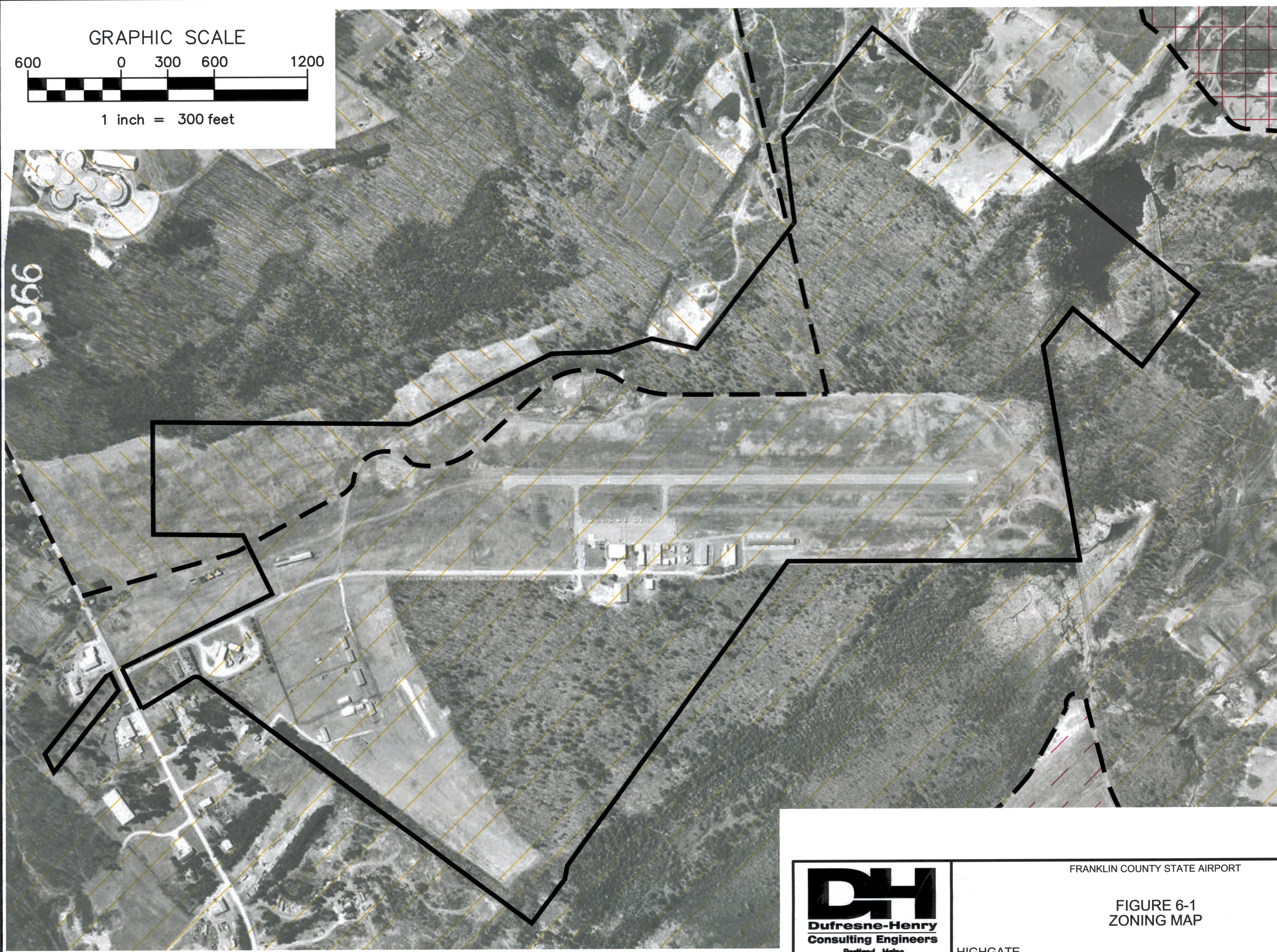


Rev.	Description	By	Date

FRANKLIN COUNTY STATE AIRPORT  
**RUNWAY 01**  
**FAR PART 77 PLAN AND PROFILE**  
 HIGHGATE VERMONT

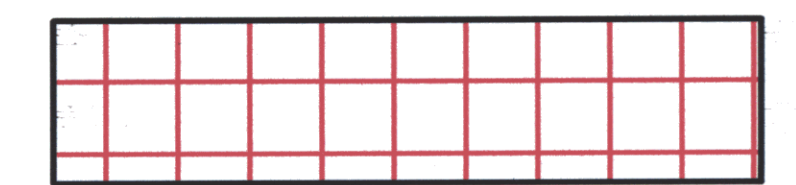
Project No.	8190014
Proj. Manager	JW
Proj. Designer	JW
Drawn By	MRS
Checked By	JW
Scale	1" = 200'
Approved	
Date	05/00





LEGEND

MD MEDIUM DENSITY RESIDENTIAL



PA PROTECTED AREAS DISTRICT



ICD INDUSTRIAL-COMMERCIAL DISTRICT



AL AGRICULTURAL DISTRICT



ZONING BOUNDARY



AIRPORT PROPERTY LINE



FRANKLIN COUNTY STATE AIRPORT

FIGURE 6-1  
ZONING MAP

HIGHGATE

VERMONT

Project No.	8190014
Proj. Mgr.	MLC
Scale	1"=300'
Date	05-09-00
	B