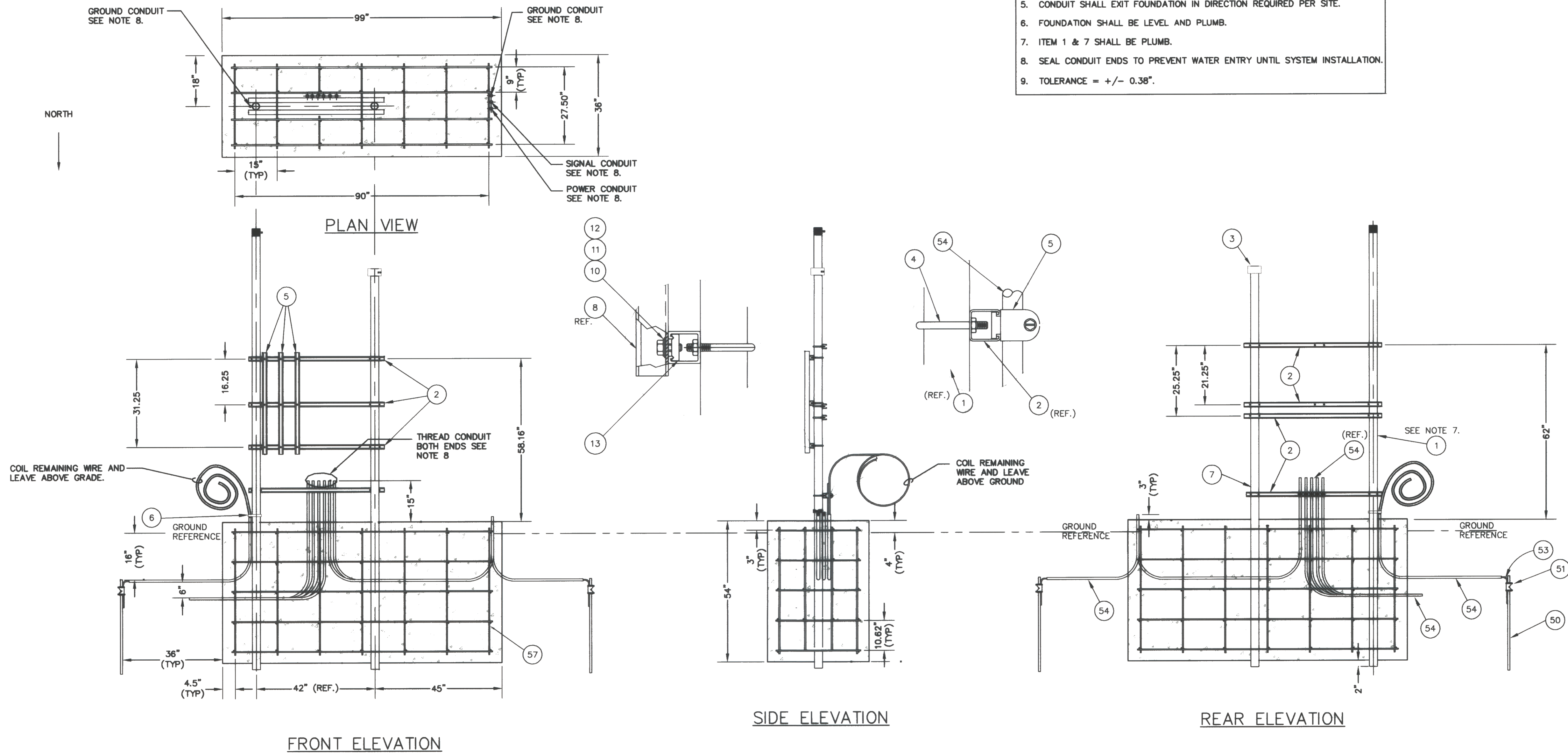


Items To Be Supplied by Contractor			
Item	Description	Recommended Manufacturer Name and Part Number	Quantity Required
50	Ground Rod, 3/4"DIA	Robbins #9710	2 EA
51	Ground Clamp	Robbins #98B	2 EA
53	Ground Wire, 2AWG Copper	Rohn #CW2ST	20 Ft.
54	Rigid Galv. St. Conduit, 3/4"DIA	Allied #Rigid 3/4"	As Required
57	Reinforced Steel Bar 15M	Parker Steel International #4	254 Ft.

Items Supplied by Vaisala Inc., Artals Division				
Item	Number	REV	Description	QTY U/M
1	39-22893	0	Pipe 2.5x156 T.O.E. White	1 EA
2	51-22892	1	Strut 48" White	7 EA
3	39-22888	0	Cap, Pipe 2 1/2" Sch 40 White	1 EA
4	45-22883	0	Clamp, U-Bolt 2 1/2" W/O Strap	14 EA
5	45-21378	0	Clamp, Pipe 3/4 GRC and IMC	5 EA
6	45-21280	0	Clamp, Ground 2-4 DIA Aluminum	1 EA
7	39-22894	0	Pipe 2.5x142 T.O.E. White	1 EA
8	70-22297	0	Strut 36" Painted	3 EA
10	45-21041	0	Bolt, Hex 3/8-16x1 SS	6 EA
11	42-21063	0	Washer, Lock Split 3/8 SS	6 EA
12	45-21059	0	Washer, Flat 3/8 SS	6 EA
13	45-21663	0	Nut, Top Grip W/ Spring 3/8-16 Galv.	6 EA

FOUNDATION TO BE ORIENTATED AS SHOWN DUE TO THE VISIBILITY SENSOR. THE SUN MAY NOT SHINE DIRECTLY INTO THE RECEIVER OPTICS.

- NOTES
1. ALL DIMENSIONS IN ENGLISH (INCHES) UNLESS SPECIFIED OTHERWISE.
 2. PULL STRINGS SHALL BE PLACED IN ALL CONDUIT.
 3. FOUNDATION SIZE AND DEPTH BASED ON SOIL CONDITION OF A CBR 4.0.
 4. CONCRETE SHALL BE MINIMUM OF 3000 PSI @ 28 DAYS.
 5. CONDUIT SHALL EXIT FOUNDATION IN DIRECTION REQUIRED PER SITE.
 6. FOUNDATION SHALL BE LEVEL AND PLUMB.
 7. ITEM 1 & 7 SHALL BE PLUMB.
 8. SEAL CONDUIT ENDS TO PREVENT WATER ENTRY UNTIL SYSTEM INSTALLATION.
 9. TOLERANCE = +/- 0.38".



A
8 MAIN SENSOR SUITE FOUNDATION
NOT TO SCALE



Rev.	Description	By	Date

VERMONT

AWOS INSTALLATION
FRANKLIN AIR 04-3144 C/1
**FRANKLIN COUNTY STATE AIRPORT
MAIN SENSOR SUITE FOUNDATION**

HIGHGATE



Project No.	8190066
Proj. Manager	AHT
Proj. Designer	AHT
Drawn By	DNF
Checked By	MC
Scale	NTS
Approved	MC
Date	05-07-01

8