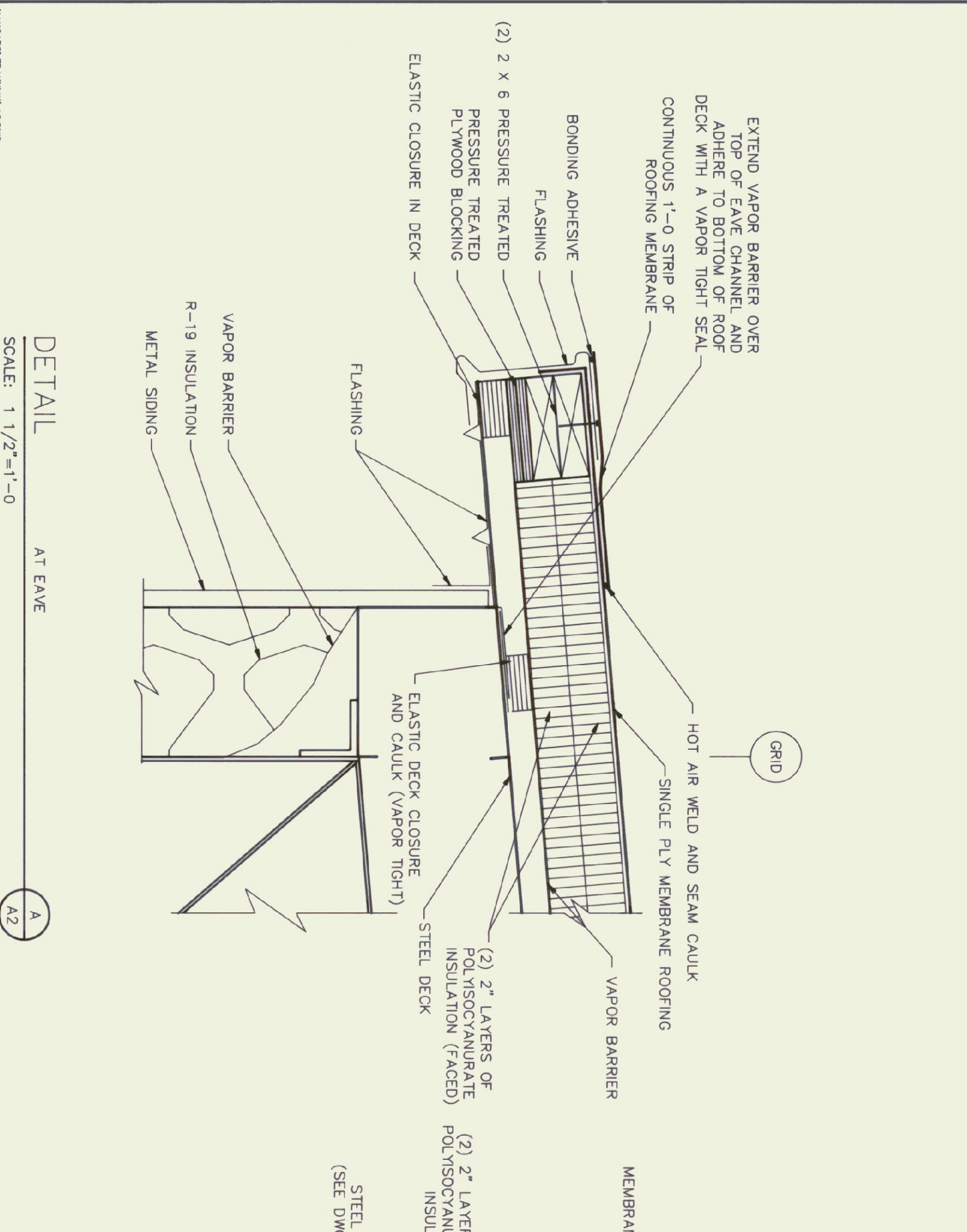
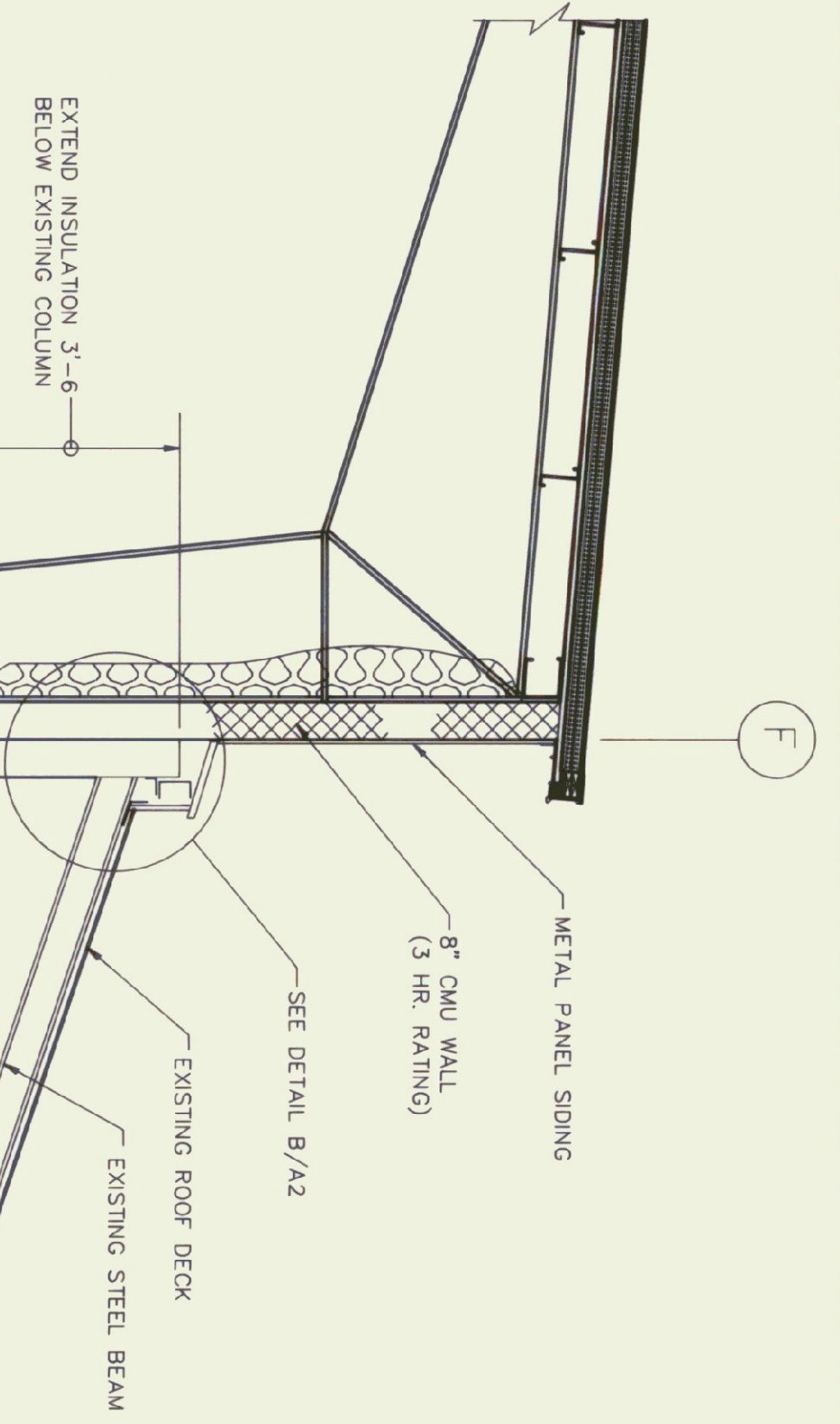


SECTION
BUILDING SECTION
SCALE: 3/8"=1'-0"

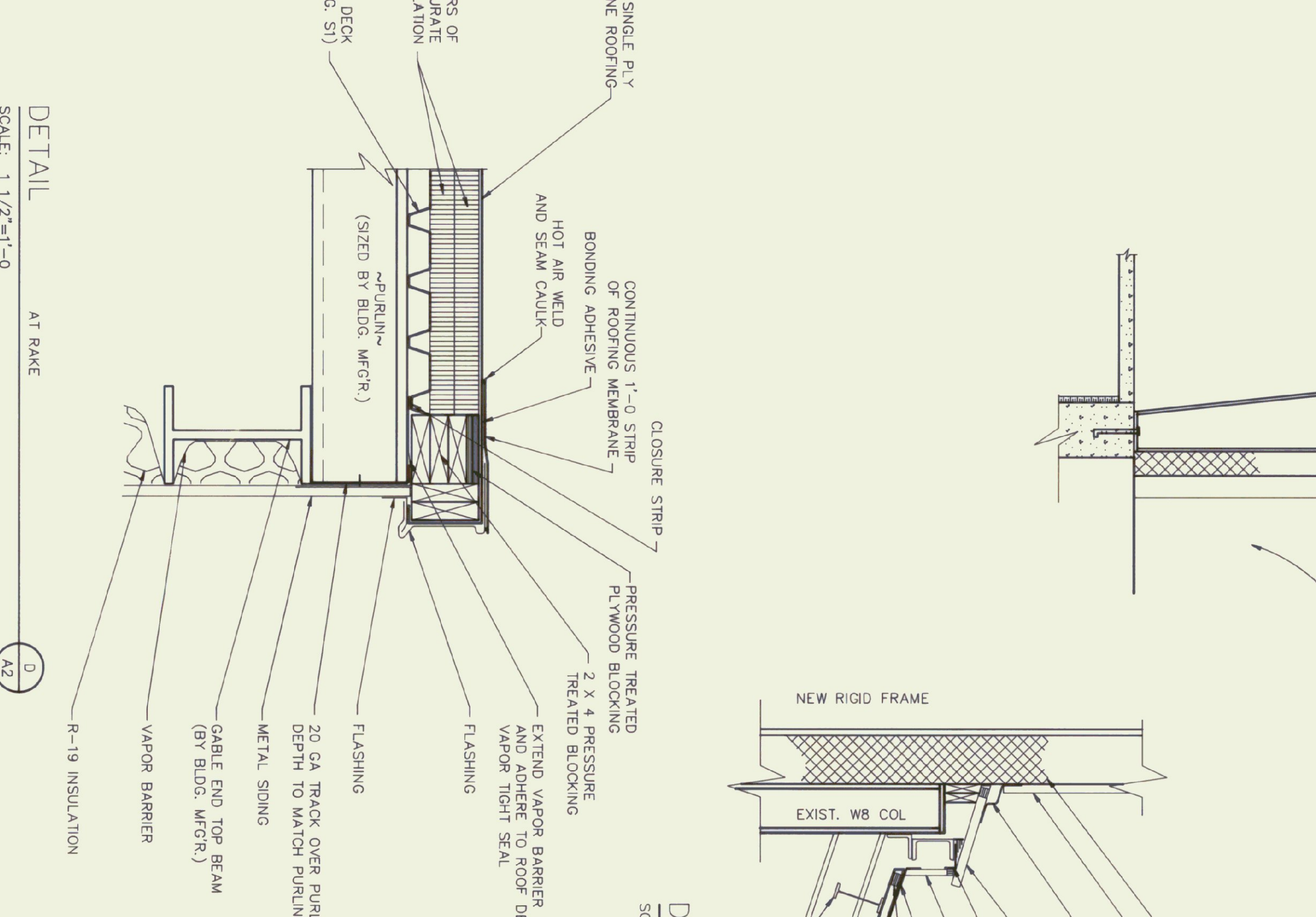


DETAIL
AT EAVE
SCALE: 1 1/2"=1'-0"

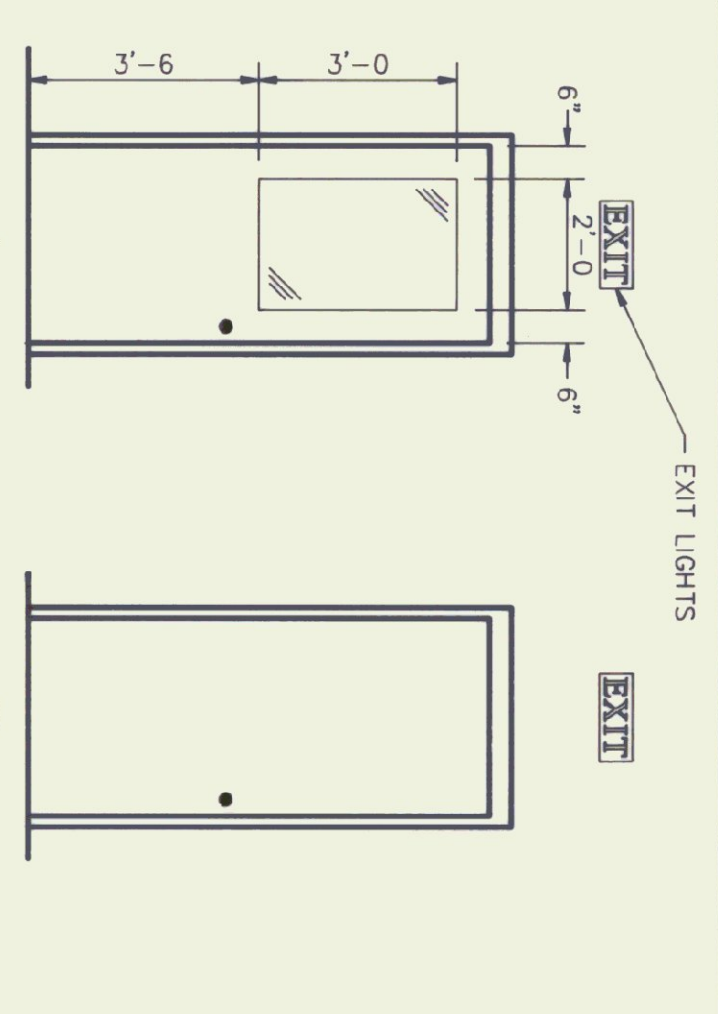
HANGAR
AREA



TERMINAL
AREA

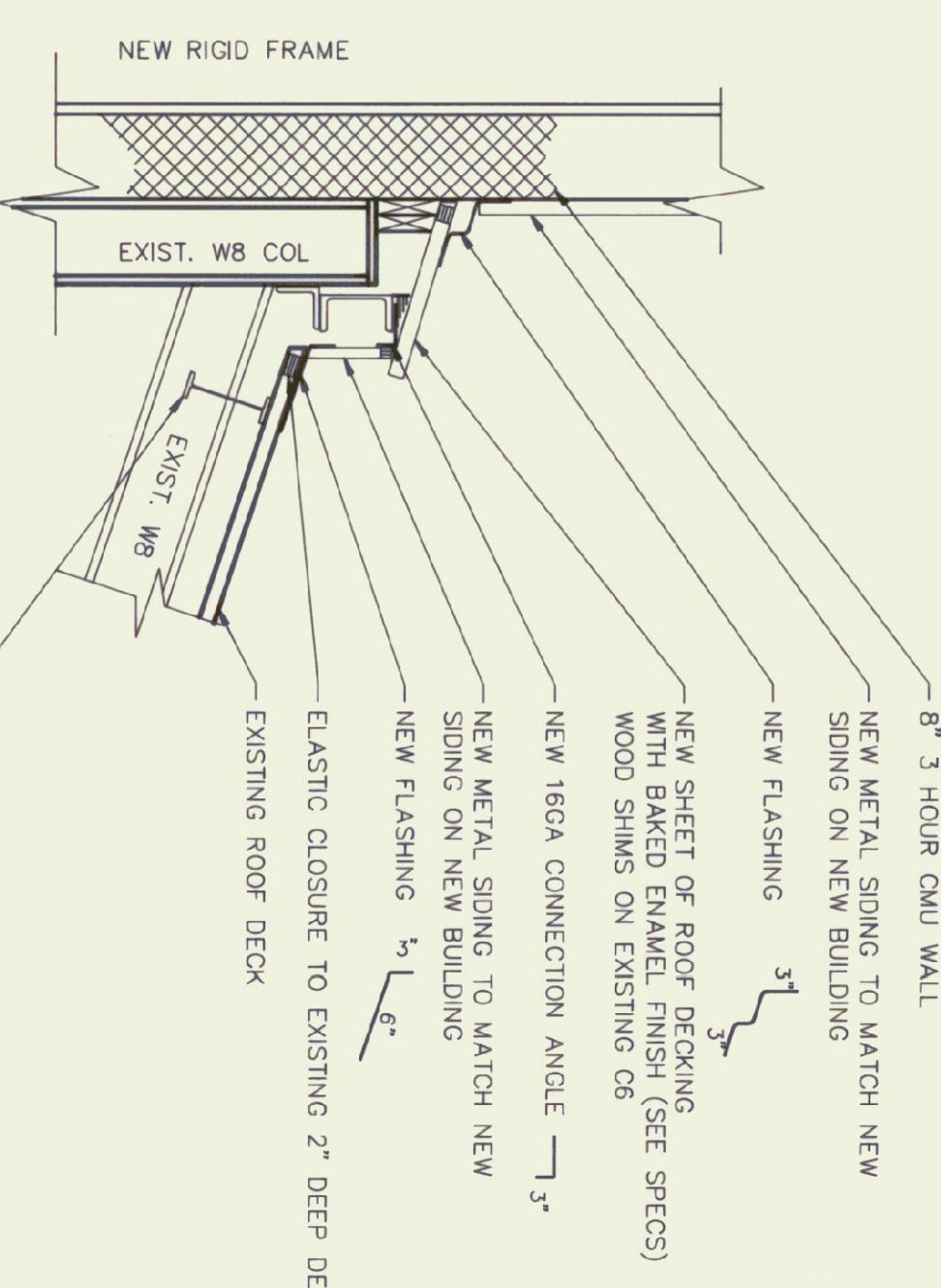


DETAIL
AT RAKE
SCALE: 1 1/2"=1'-0"

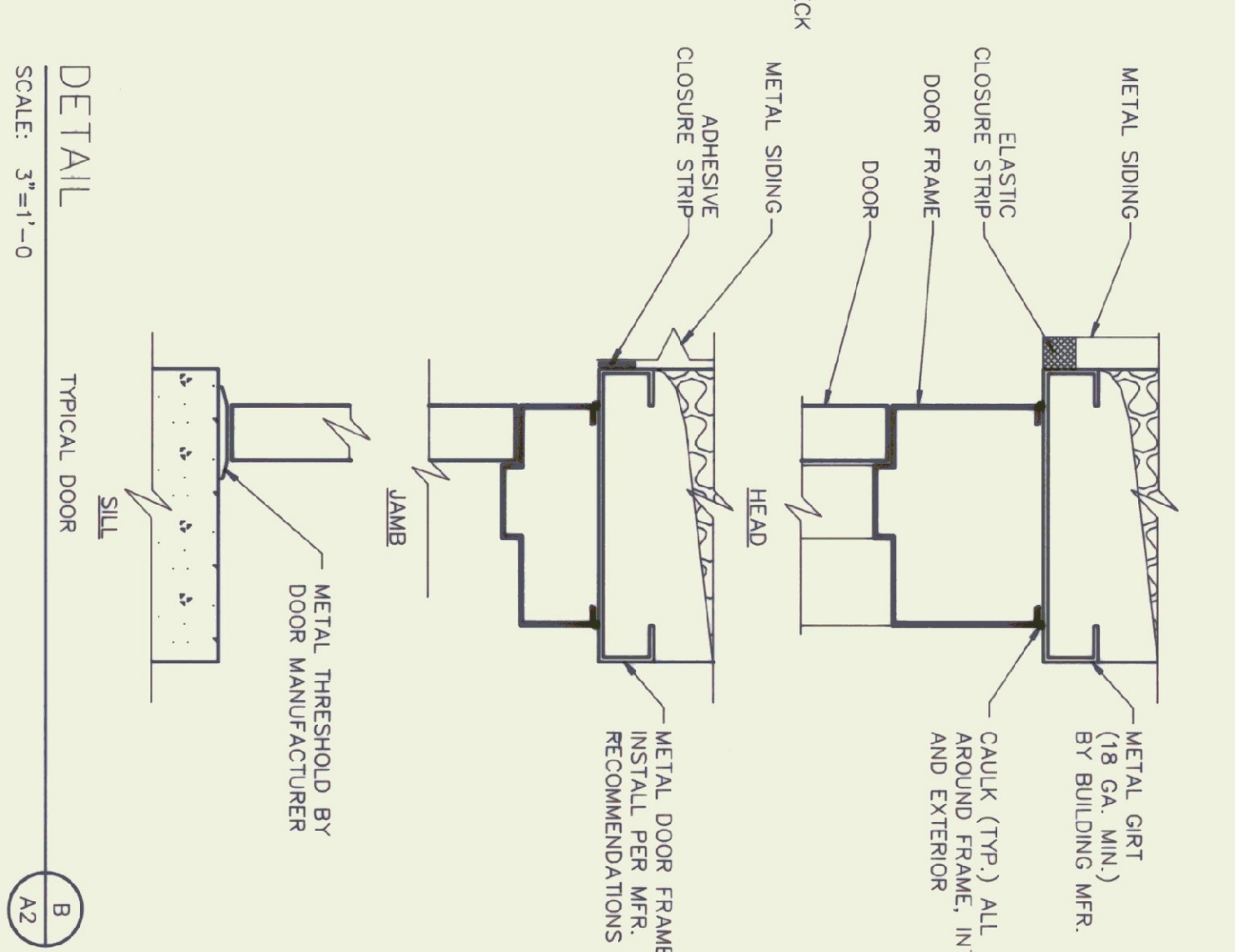


DETAIL
DOOR ELEVATIONS
SCALE: 3/8"=1'-0"

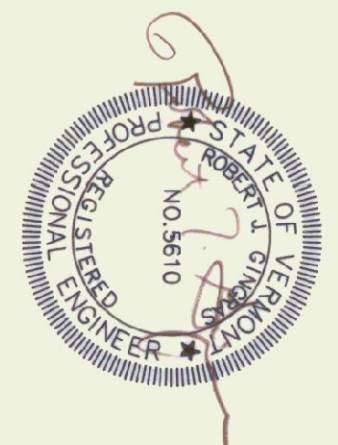
DOOR NUMBER	DOOR W x H	ROUGH OPENING	DOOR FRAME MATERIAL	ELEVATION DESIGNATION	BOT. OF SILL ELEVATION	REMARKS
1	3'-0" X 7'-0"	3'-4" X 7'-4"	STEEL	A	+/-6" BEL. F.F.	ADJUST TOP OF CONC. FOR DOOR
2	3'-0" X 7'-0"	3'-4" X 7'-4"	STEEL	B	F.F.	3 HR. FIRE RATING
3	3'-0" X 7'-0"	3'-4" X 7'-4"	STEEL	B	F.F.	3 HR. FIRE RATING
4	3'-0" X 7'-0"	3'-4" X 7'-4"	STEEL	B	F.F.	NONE
5	3'-0" X 7'-0"	3'-4" X 7'-4"	STEEL	B	F.F.	NONE



DETAIL
SCALE: 3/4"=1'-0"



DETAIL
SCALE: 3"=1'-0"



Rev No	Date	Description	Made By	Checked By	App'd By

**NEW AIRPORT HANGAR
FRANKLIN COUNTY AIRPORT
SECTIONS AND DETAILS
PROJECT NO. AIR 03 2014**

Scale AS NOTED

Des. By: **RJC**
Dwn. By: **DDH**
Chk. By: **MJC**

Date: **MAY 1992**
Dwg. No: **22-002-4**

CHENETTE ENGINEERING, INC.
50 STATE STREET
MONTPELIER, VERMONT 05602

A2