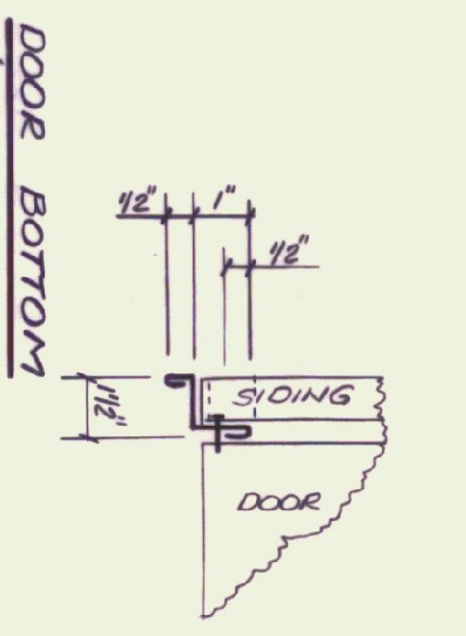
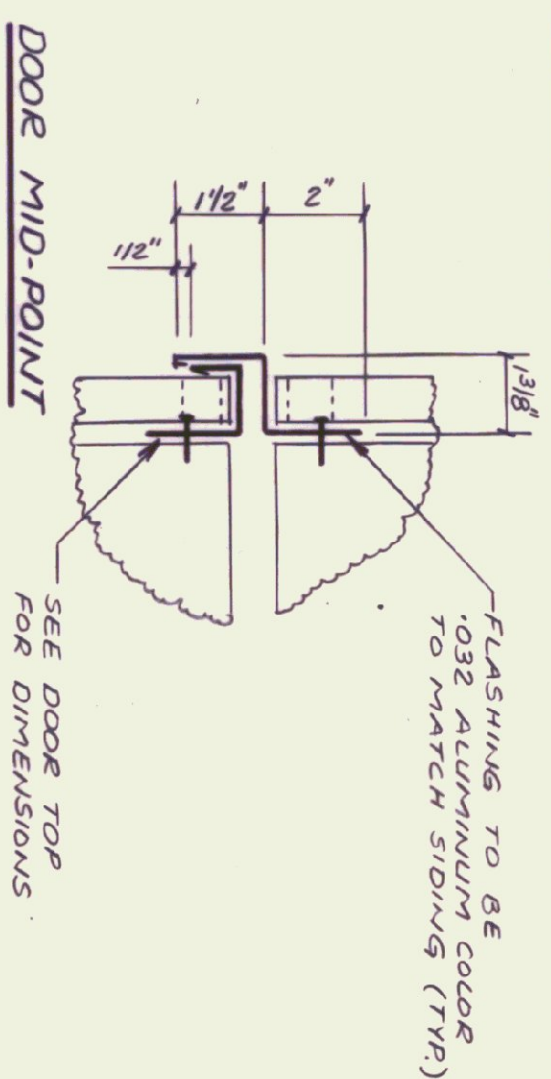
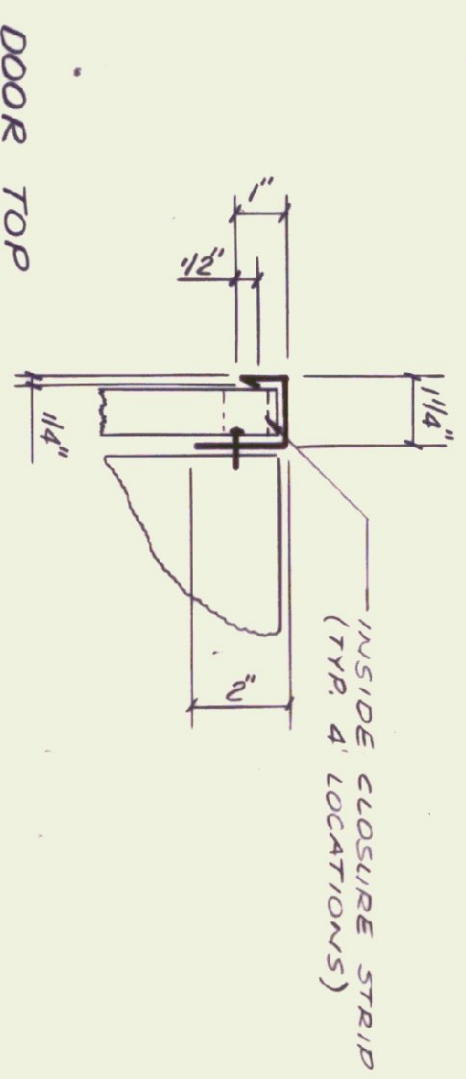
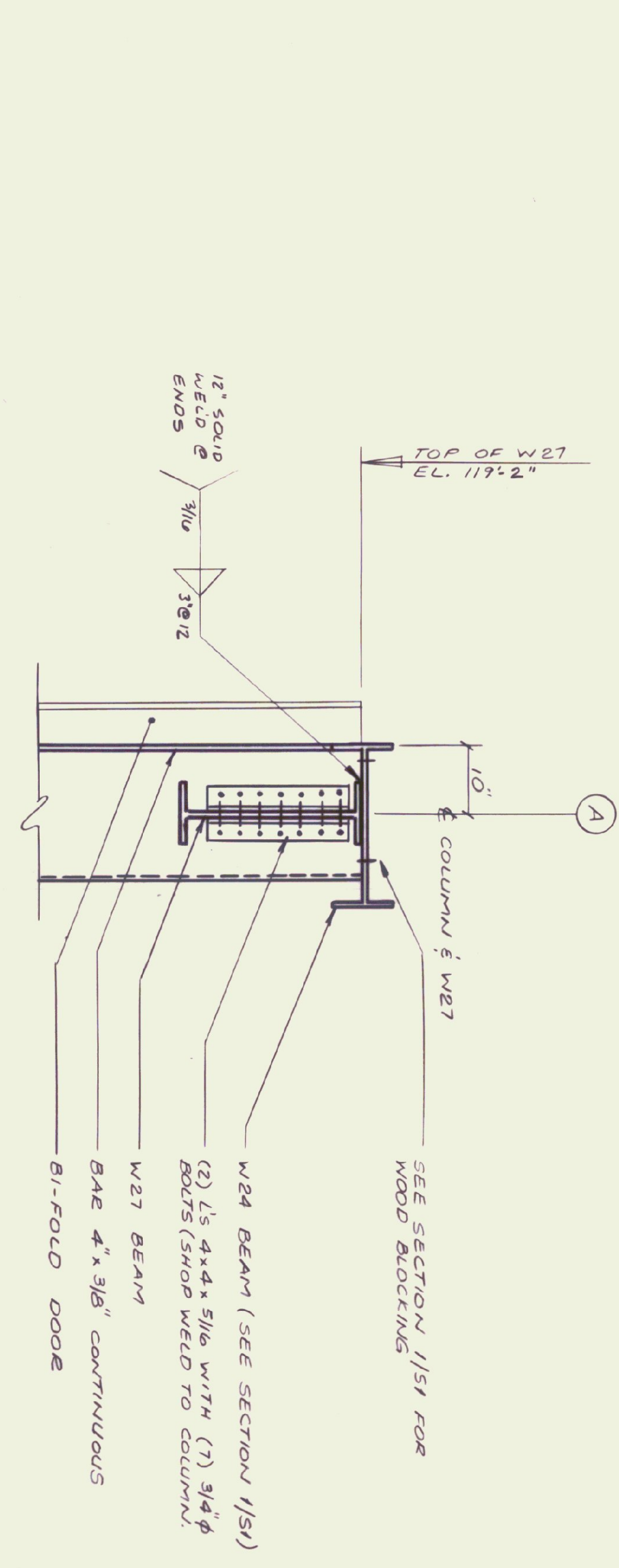
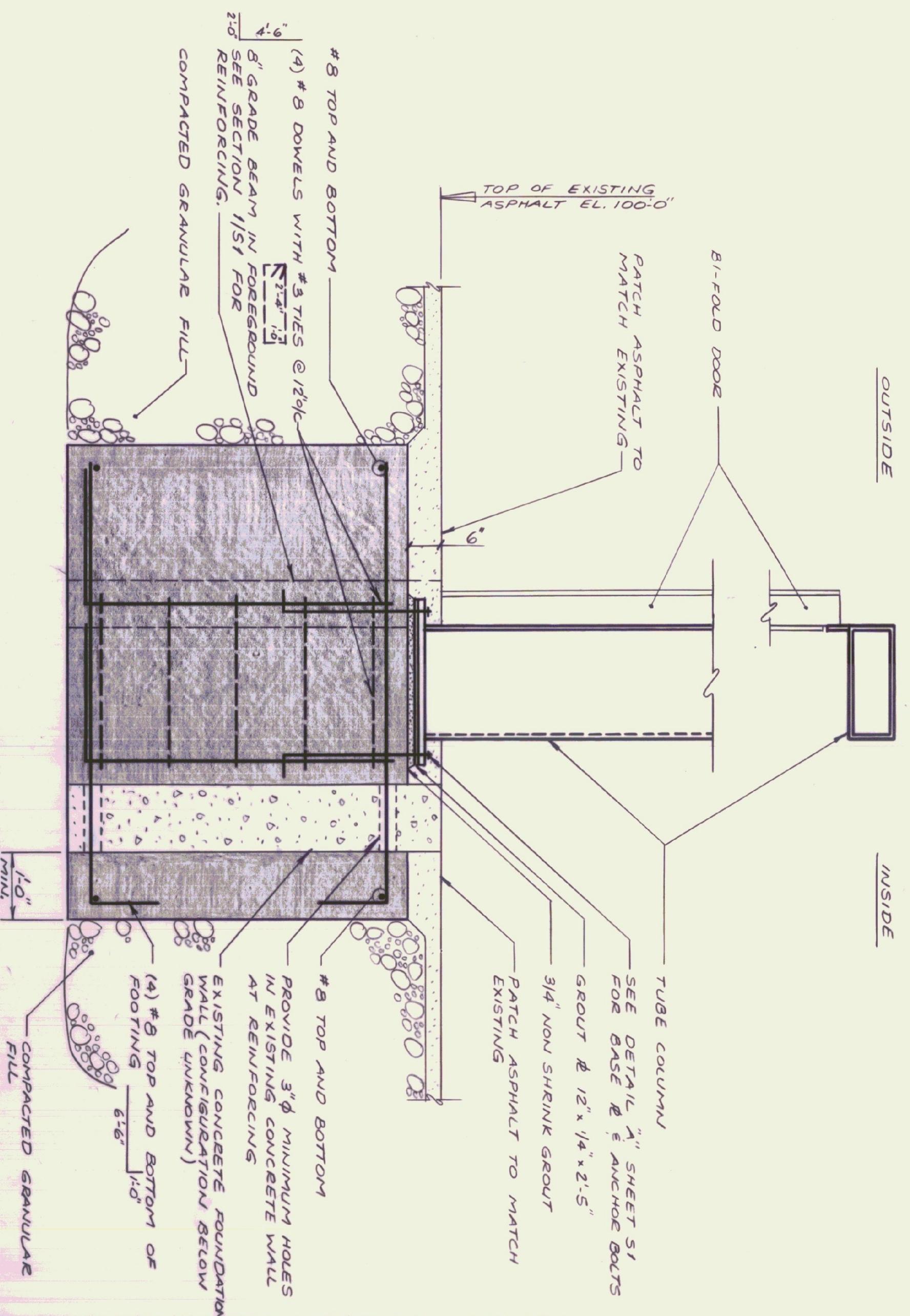


PARTIAL ELEVATION (WEST WALL)
SCALE: 1/4"=1'-0"



BI-FOLD DOOR FLASHING DETAILS
SCALE: 3/4"=1'-0"



SECTION 2
SCALE: 3/4"=1'-0"

	HANGAR DOOR FRANKLIN COUNTY STATE AIRPORT HIGHGATE, VERMONT	Lawes Consulting Engineers, Inc. ROUTE 2A WILLISTON, VERMONT 05495	No. 4-29-87 DATE 4-29-87 REVISION NO CHANGES
	DRAWN: SCORNA CHECKED: SKL/MSD DATE: 1/26/87	PROJ. NO.: 86/174 DATE: 1/26/87	ELEVATIONS AND SECTIONS

