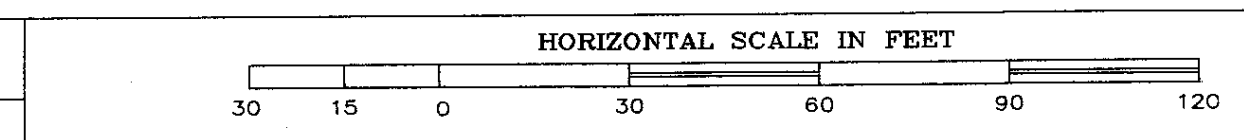


KEY	FEEDER SCHEDULE
①	2-1/2" C, 3-#1/0 CU., 2" C TEL., 2" C SPARE
②	EXISTING OVERHEAD
③	2" C, 3-#1/0 CU., 2" C TEL., 2" C SPARE
④	OVERHEAD LINES TO BE REMOVED POLE BY L.E.C.
⑤	1" C, 5-#12 CU.
⑥	1" C, 3-#8 CU.

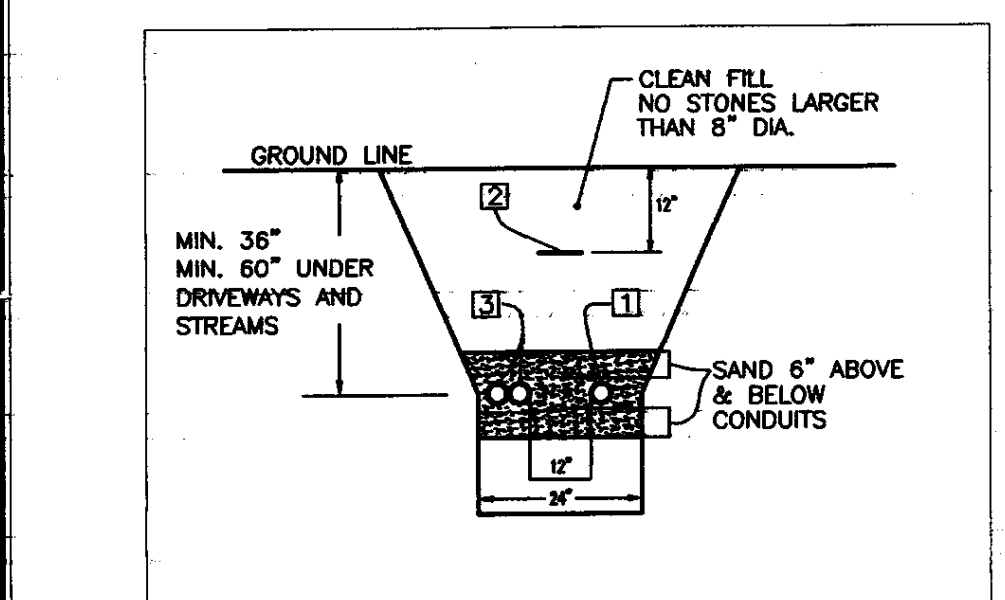


**GENERAL NOTES:**

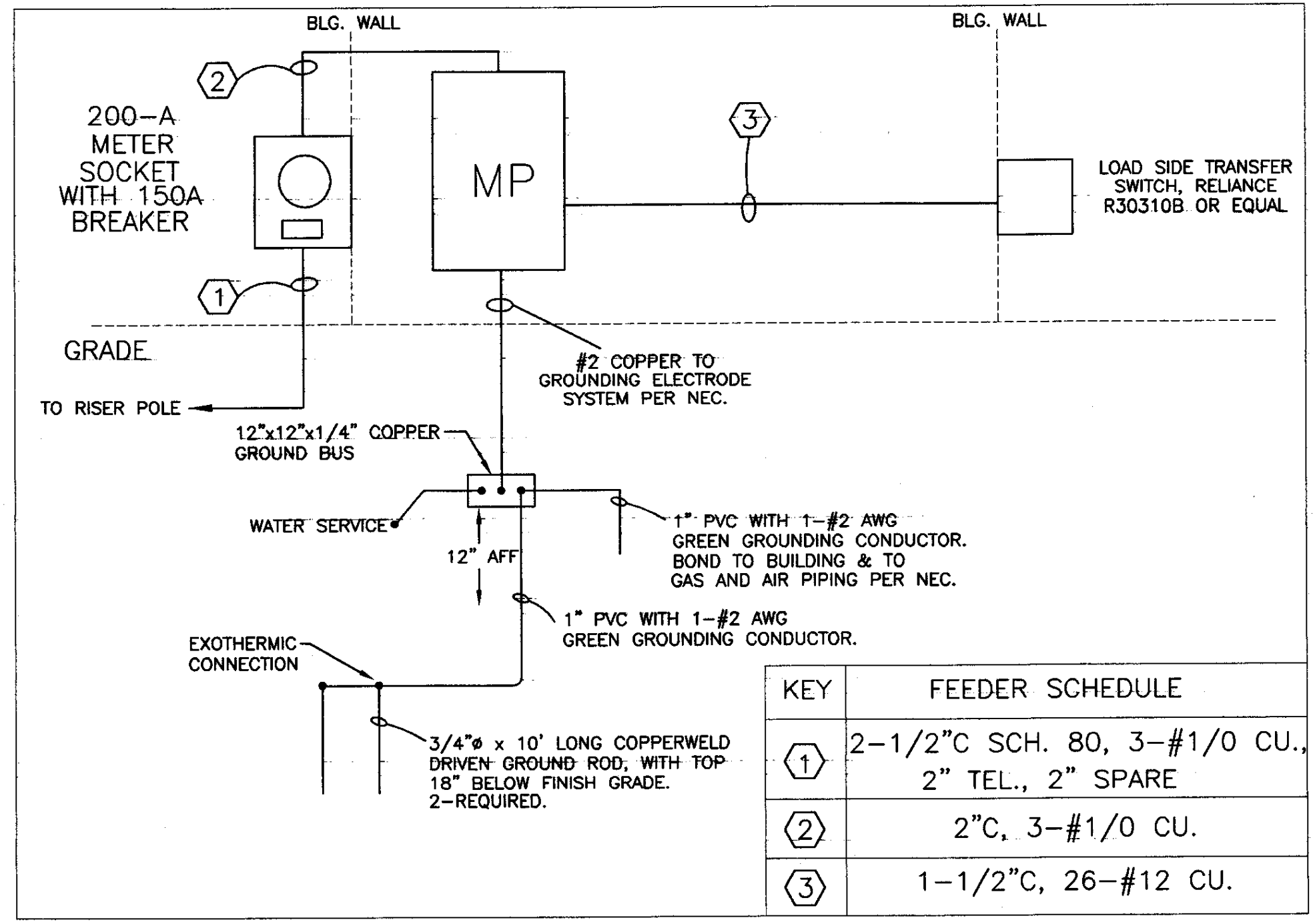
- ANY PLACE WHERE THE CONTRACTOR PENETRATES, CUTS AND/OR REMOVES WALLS, CEILINGS, OR WOODWORK, CONTRACTOR IS TO REPLACE, PATCH AND PAINT FINISH SURFACES TO ORIGINAL FINISHES.
- FIELD VERIFY ALL DIMENSIONS BEFORE COMMENCEMENT OF WORK. NOTIFY ENGINEER OF ANY ERRORS.
- EC TO PROVIDE AND INSTALL ALL DISCONNECT SWITCHES, MC TO SUPPLY ALL MOTOR STARTERS, EC TO INSTALL.

**KEYED NOTES:**

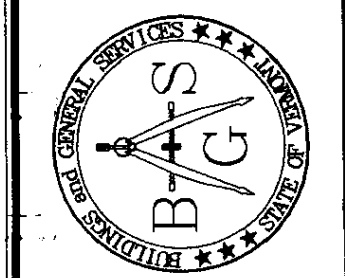
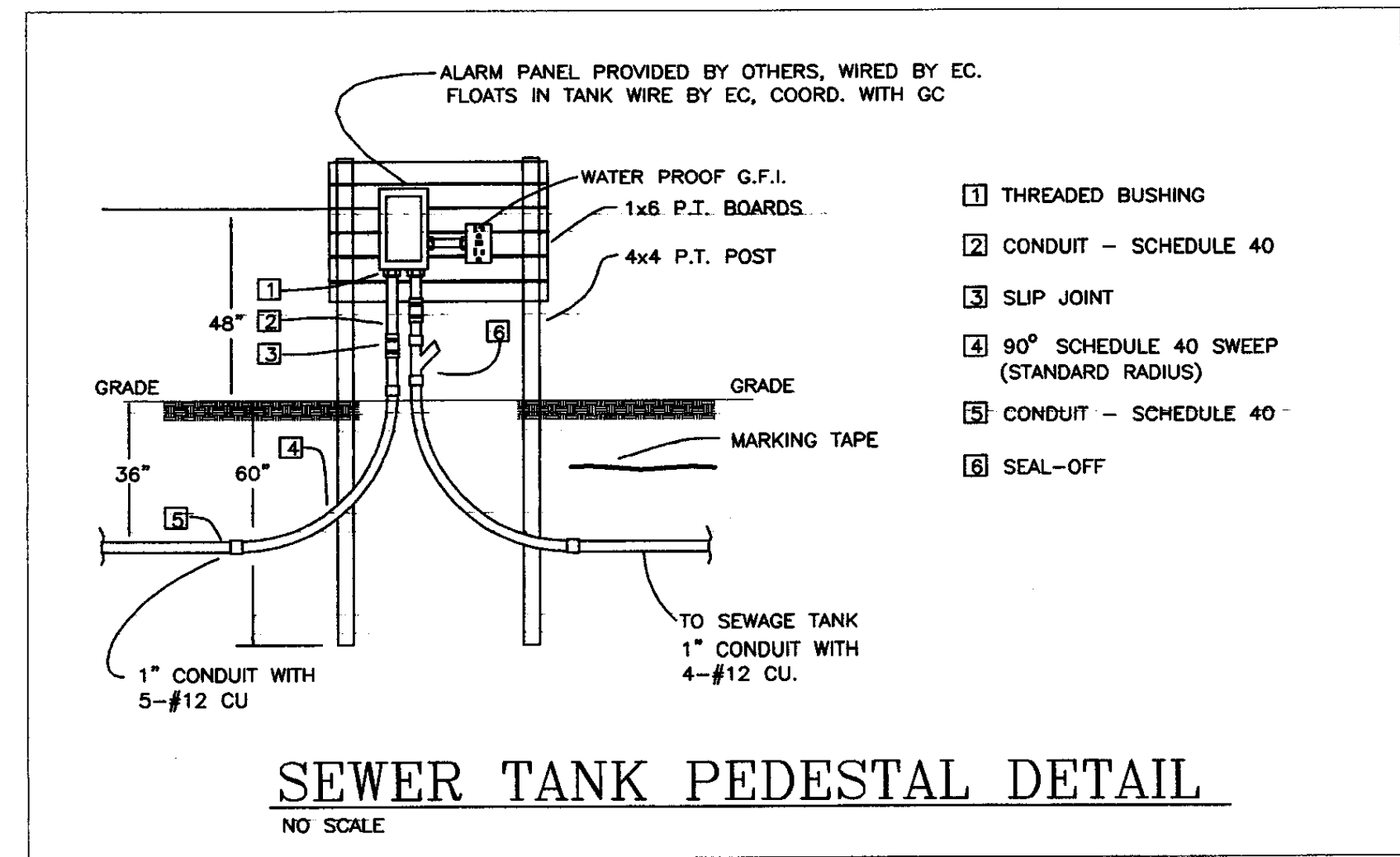
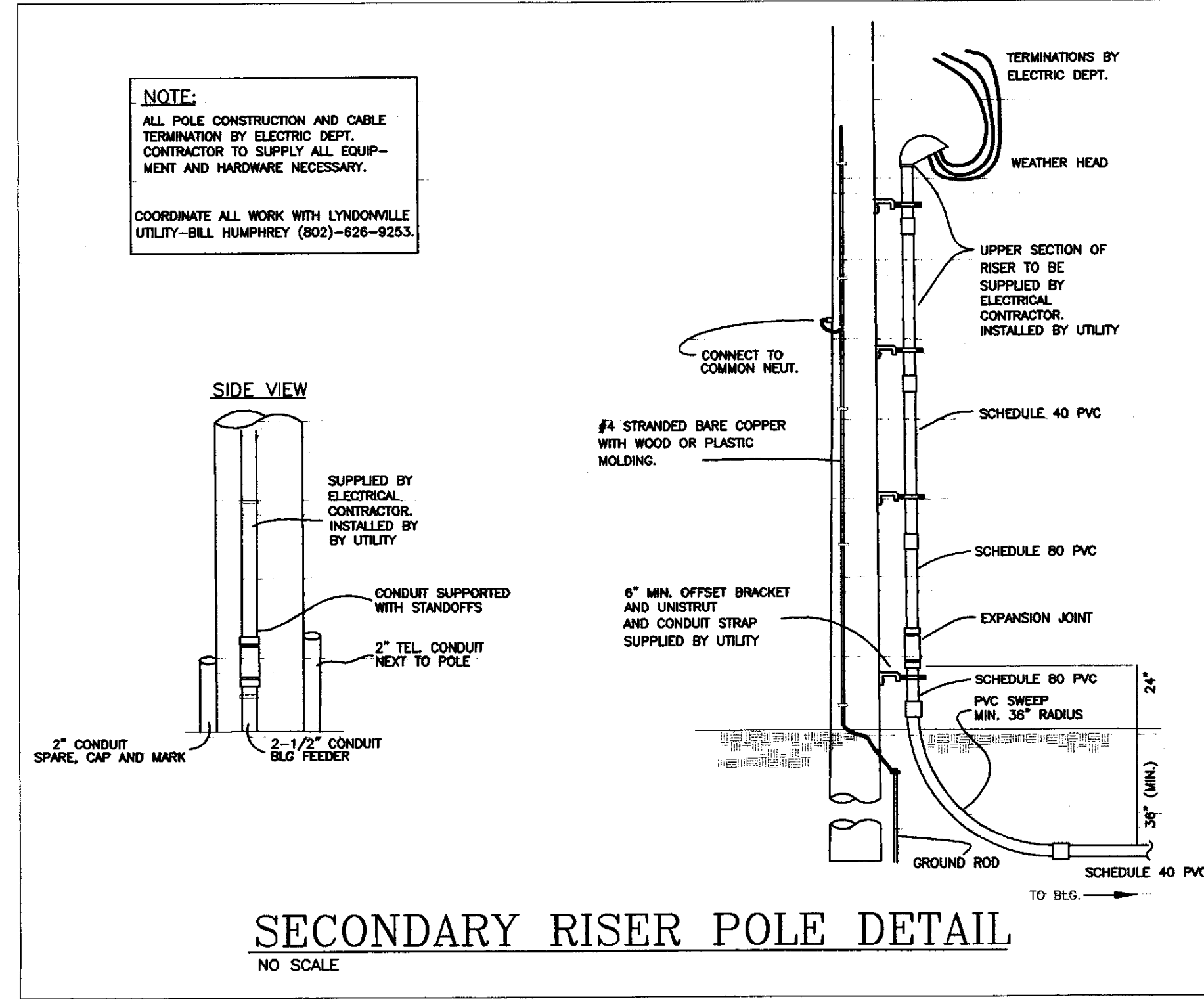
- TELEPHONE CONDUIT & SPARE CONDUIT CONTINUE UNDERSLAB & DO NOT EMERGE FROM THE GROUND.
- REFER TO PEDESTAL DETAIL & CIVIL DRAWINGS FOR SEWER PUMP WIRING.
- EXISTING OVERHEAD TO BE REMOVED. COORDINATE WITH UTILITY. EC SHALL INCLUDE \$500 ALLOWANCE FOR UTILITY CHARGES ASSOCIATED WITH REMOVING THIS OVERHEAD SERVICE.



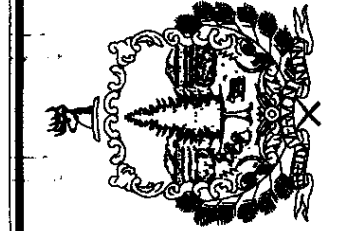
KEY	DESCRIPTION
①	SERVICE CABLE DUCT SHALL BE PVC SCHEDULE 80.
②	WARNING TAPE SHALL BE ELECTRIC LEGEND TYPE - ALLEN CAT.#ANT-1006-RE OR EQUAL (WARNING TAPE SHALL BE PLACED 12" BELOW SURFACE.)
③	TEL. DUCT SHALL BE PVC SCHEDULE 40. UNDER ROADS & DRIVEWAYS TO BE SCHEDULE 80. MAINTAIN 12" SEPARATION FROM ELECTRIC. PROVIDE SPARE 2" CONDUIT.



KEY	FEEDER SCHEDULE
①	2-1/2" C SCH. 80, 3-#1/0 CU., 2" TEL., 2" SPARE
②	2" C, 3-#1/0 CU.
③	1-1/2" C, 26-#12 CU.



STATE OF VERMONT  
Department of Buildings  
and General Services  
Agency of Administration  
Montpelier, Vermont



Pearson & Associates  
MECHANICAL & ELECTRICAL ENGINEERS  
70 SOUTH MAIN ST. SUITE 100  
LYNDONVILLE, VT 05752  
TEL: (802) 253-9607 FAX: (802) 253-9280  
EMAIL: pearson@townvermont.net



AGENCY OF TRANSPORTATION  
CALEDONIA COUNTY STATE  
AIRPORT  
LYNDONVILLE VERMONT

REVISIONS
SCALE: AS SHOWN
DATE: JULY 2005
DRAWN BY: ASG
APPR. BY: E. E. P.

NEW HANGAR  
FOR CIVIL  
AIR PATROL

ELECTRICAL  
PLAN

