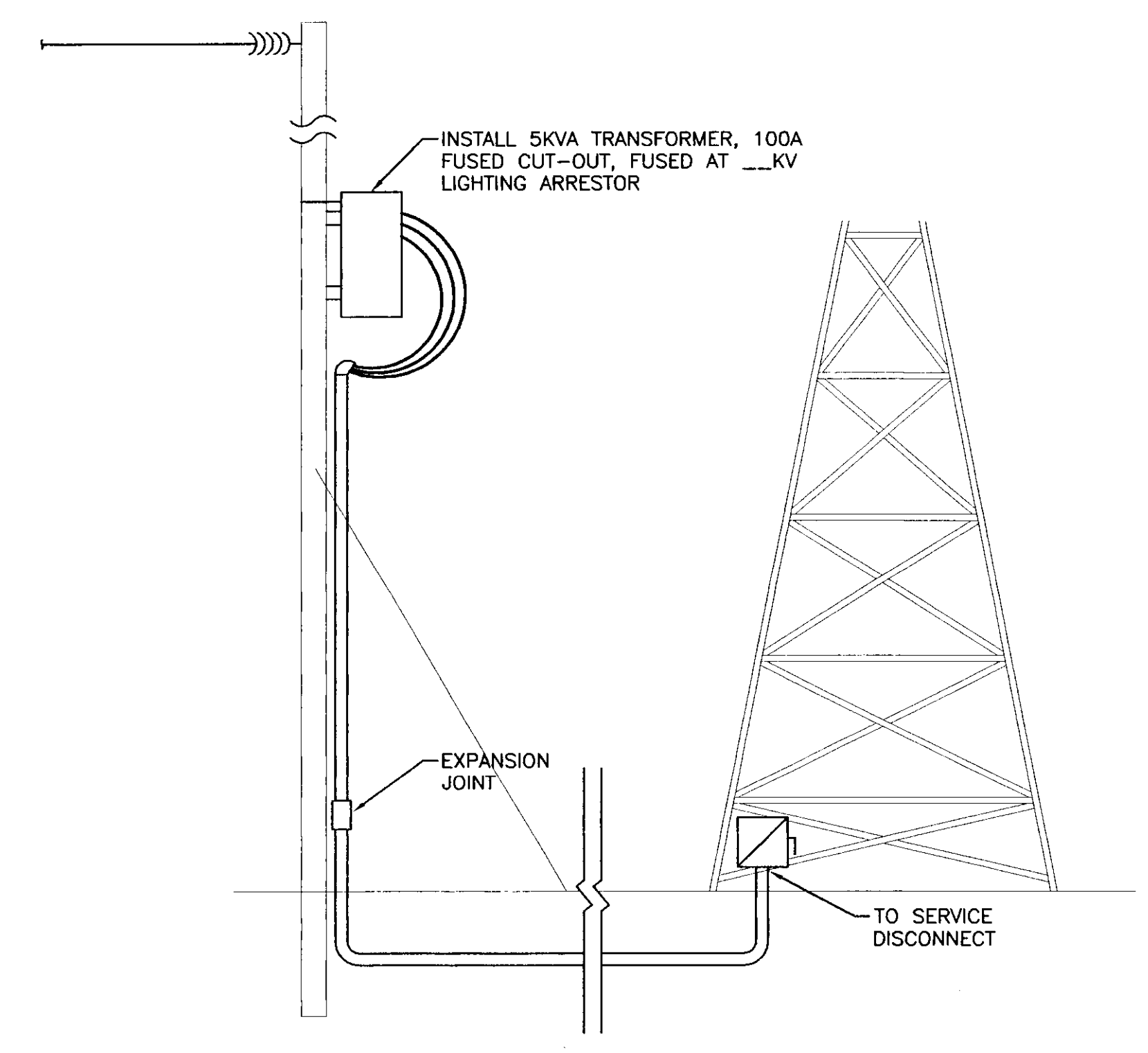
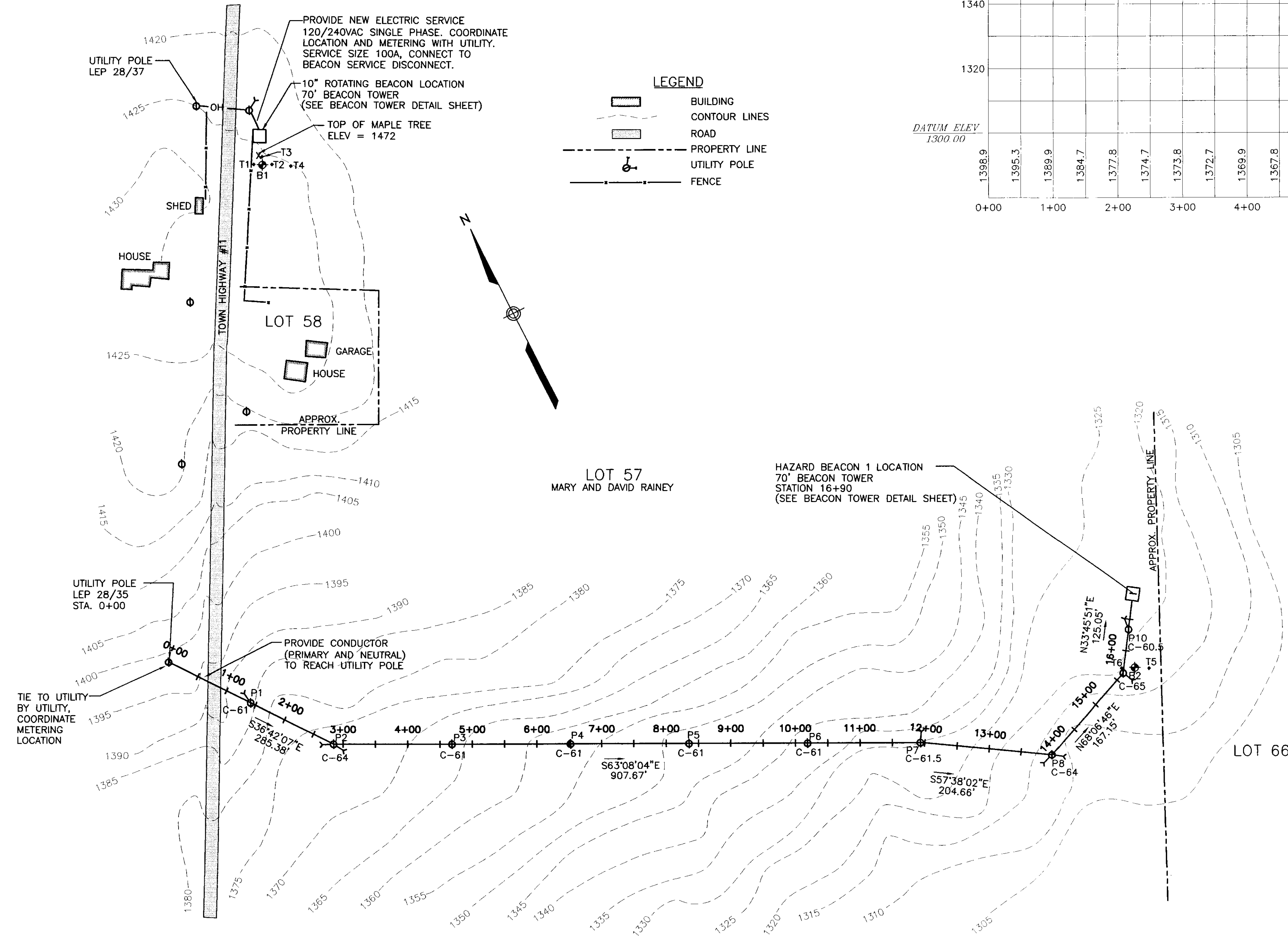
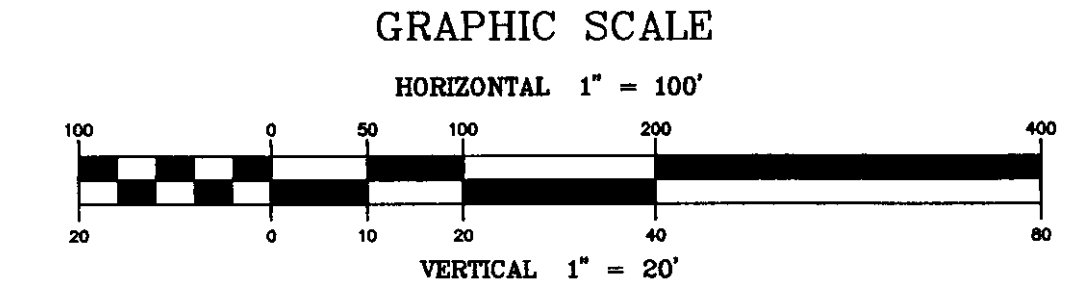
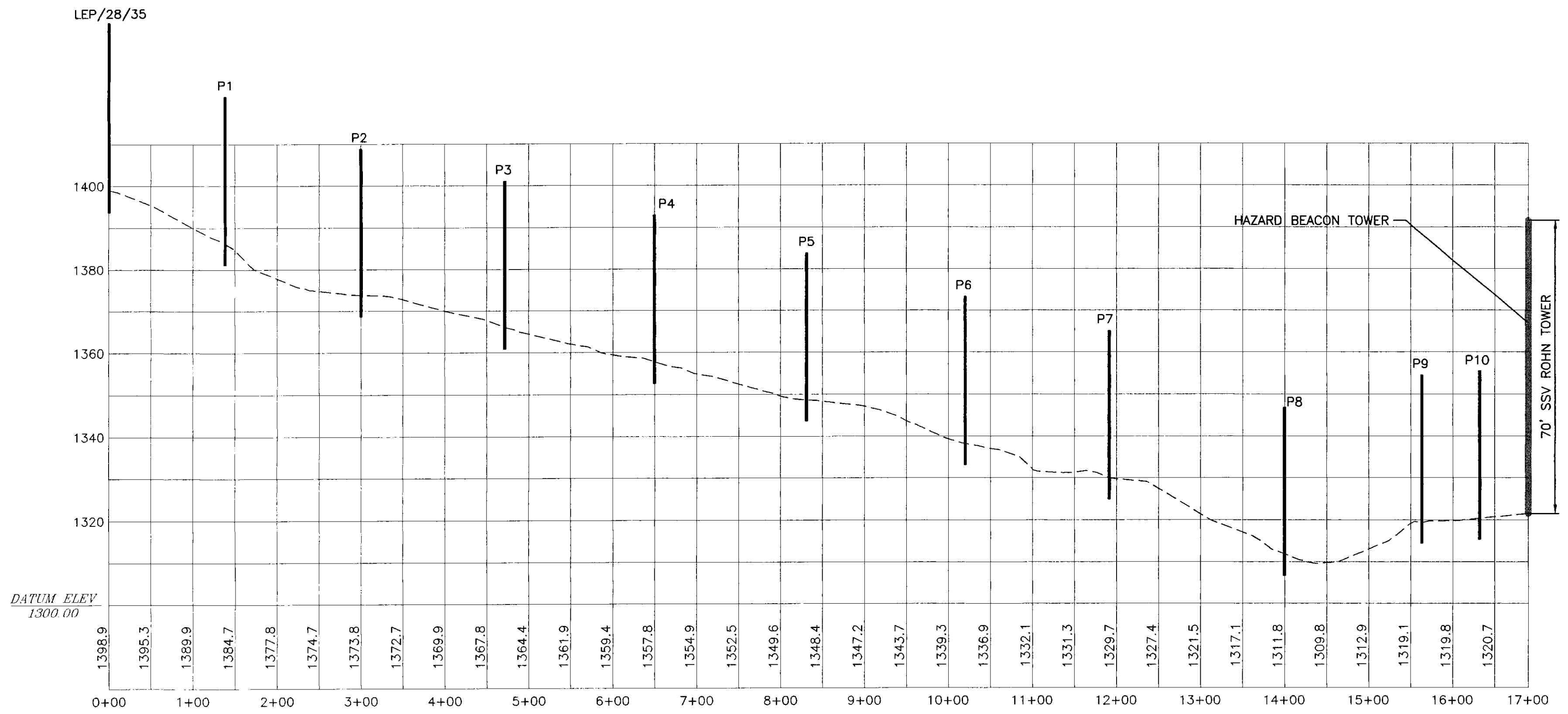


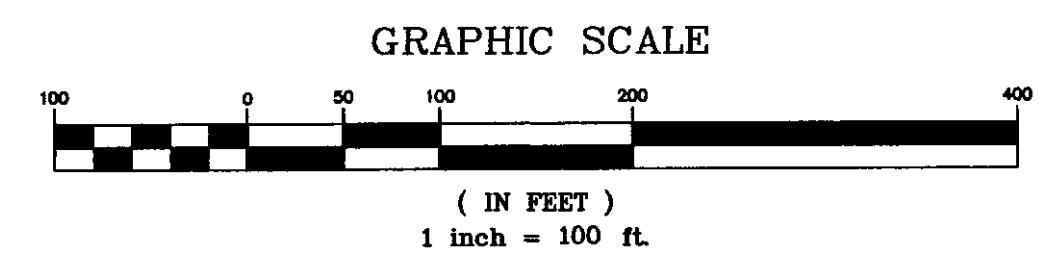
BORING B1
 5' - 7' SILTY SAND WITH STONES
 REFUSAL WITH AUGER AT 7'
 T1 = 8' WEST REFUSAL WITH AUGER AT 8"
 T2 = 8' EAST REFUSAL WITH AUGER AT 6"
 T3 = 8' NORTH REFUSAL WITH AUGER AT 7'-6"
 T4 = 44' EAST REFUSAL WITH AUGER AT 5'

BORING B2
 5' - 7' SILTY SAND WITH STONES
 10' - 11'-6" SILTY SAND WITH STONES
 REFUSAL WITH AUGER AT 11'-6"
 T5 = 8' EAST REFUSAL WITH AUGER AT 7'-6"
 T6 = 9' WEST REFUSAL WITH AUGER AT 7'



TYPICAL RISER - SEE DETAILS 1 & 2 SHEET 10
 SCALE: 3/16"=1'-0"

NOTE:
 1. CONTRACTOR TO PROVIDE TRANSFORMER FOR HAZARD BEACON SITES, UTILITY TO PROVIDE TRANSFORMER FOR ROTATING BEACON SITES.



NO.	DATE	REVISIONS	BY	CK'D

DuBois & King INC.
 engineering planning management development

STATE OF VERMONT
 AGENCY OF TRANSPORTATION
 CALEDONIA COUNTY STATE AIRPORT
 ELECTRICAL PLAN AND PROFILE
 HAZARD BEACON 1
 PLAN ROTATING BEACON

DRAWN BY MDL	DATE JULY 2001
CHECKED BY N17151	PROJ. NO. N17151
PROJ. ENG. JAA	DRAW. NO. C171510015
SHEET 8 OF 13	

I:\v17151\dwg\C171510015.dwg Mon Oct 15 08:27:55 2001