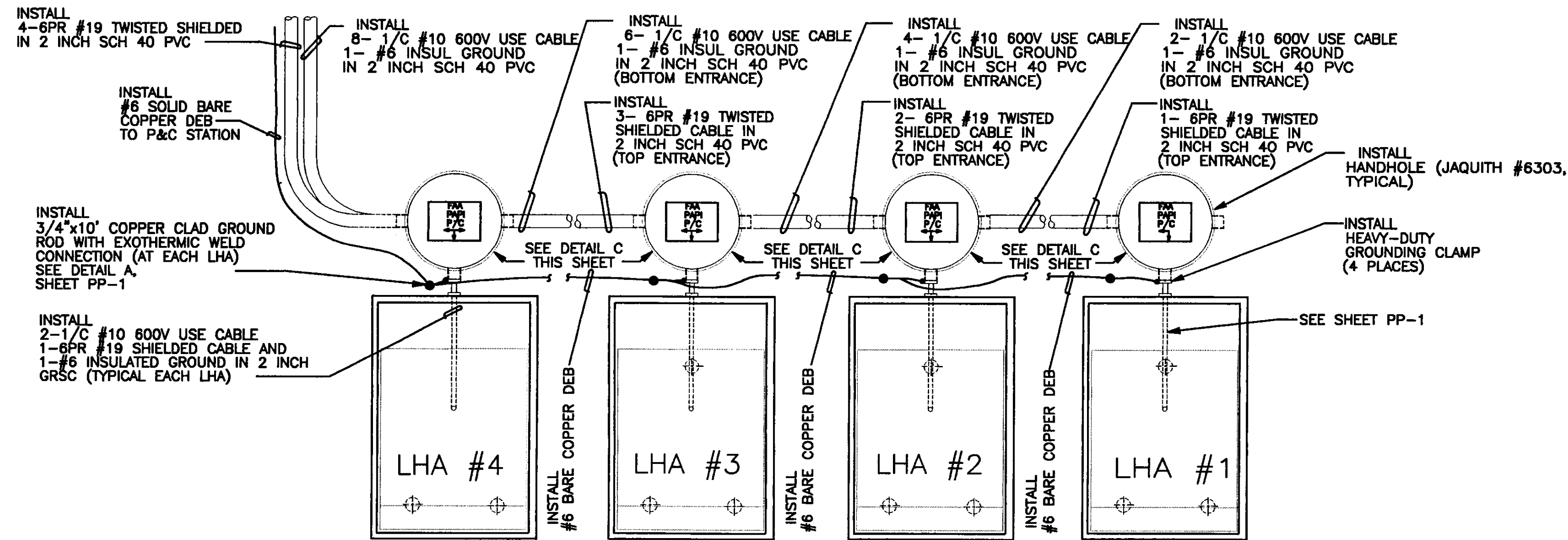


SECTION B-B
LOW VOLTAGE CABLE
TRENCH SECTION
 NOT TO SCALE



CABLING AT LAMP HOUSING ASSEMBLY CONFIGURATION
 NOT TO SCALE

- NOTES:**
1. ALL GRSC SWEEPS SHALL HAVE GROUND CLAMPS AND BE CONNECTED TO A GROUND ROD VIA #6 SOLID BARE CU WIRE.
 2. CABLE MARKERS SHALL BE PLACED EVERY 200 FEET ALONG TRENCH AND AT ANY CHANGE IN DIRECTION.
 3. ALL TRENCHES SHALL BE FILLED IN LAYERS NOT EXCEEDING 6" AND EACH LAYER SHALL BE COMPACTED TO 95% OF MAXIMUM DENSITY. FILL SHALL BE OF STRUCTURAL NATURE ONLY.
 4. ALL INSULATED CABLE SHALL BE PROPERLY AND PERMANENTLY COLOR CODED AT EACH END PRIOR TO INSTALLATION.
 5. CONTRACTOR SHALL VERIFY THAT GROUND LUGS HAVE BEEN INSTALLED ON BOTH INTERIOR AND EXTERIOR OF JAQUITH CAN. IF CLAMPS DO NOT EXIST, CONTRACTOR SHALL BE RESPONSIBLE FOR INSTALLATION.
 6. CONTRACTOR SHALL FURNISH AND INSTALL BRASS IDENTIFICATION PLATES. THESE PLATES SHALL BE 8" X 6" WITH THREE ROWS OF CHARACTERS (2 FOR WORDS, 1 FOR DIRECTION ARROW), AND 1" LETTERING.
 7. CONTRACTOR SHALL DRILL 1 1/2" HOLE THROUGH THE BOTTOM OF JAQUITH CAN, AND SPRAY GALV. ON CAN PRIOR TO INSTALLATION.
 8. INSTALL A 3'x3'x1', 3/4" CRUSHED STONE SUMP UNDER ALL JAQUITH CANS. THE CRUSHED STONE SHALL BE WRAPPED IN GEOTEXTILE FABRIC.

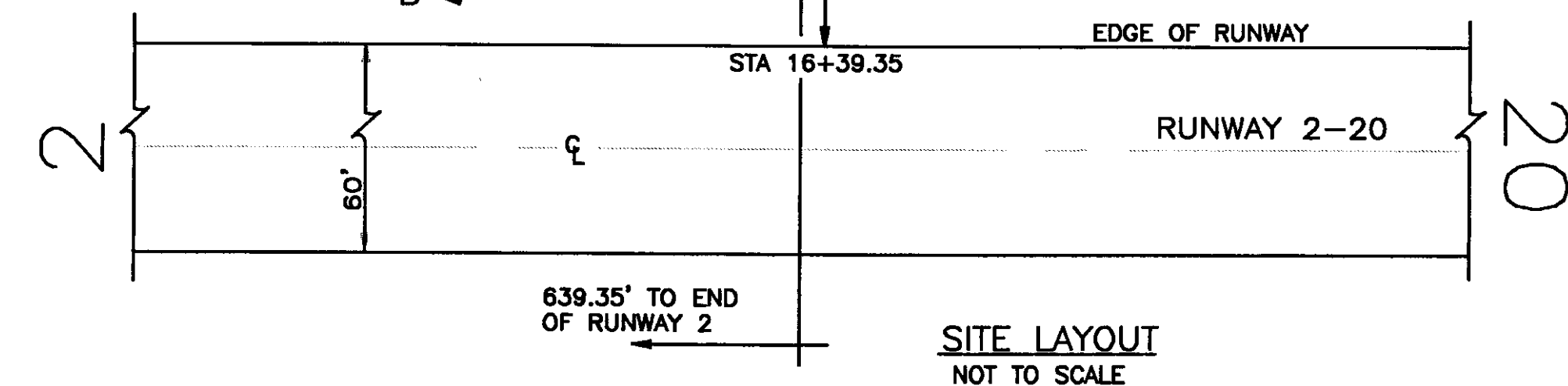
LHA-4
 MOUNTING HEIGHT = 1173.50'
 AIMING ANGLE = 3°30'
 EXIST. GROUND ELEV. = 1171.5±

LHA-3
 MOUNTING HEIGHT = 1173.50'
 AIMING ANGLE = 3°50'
 EXIST. GROUND ELEV. = 1170.6±

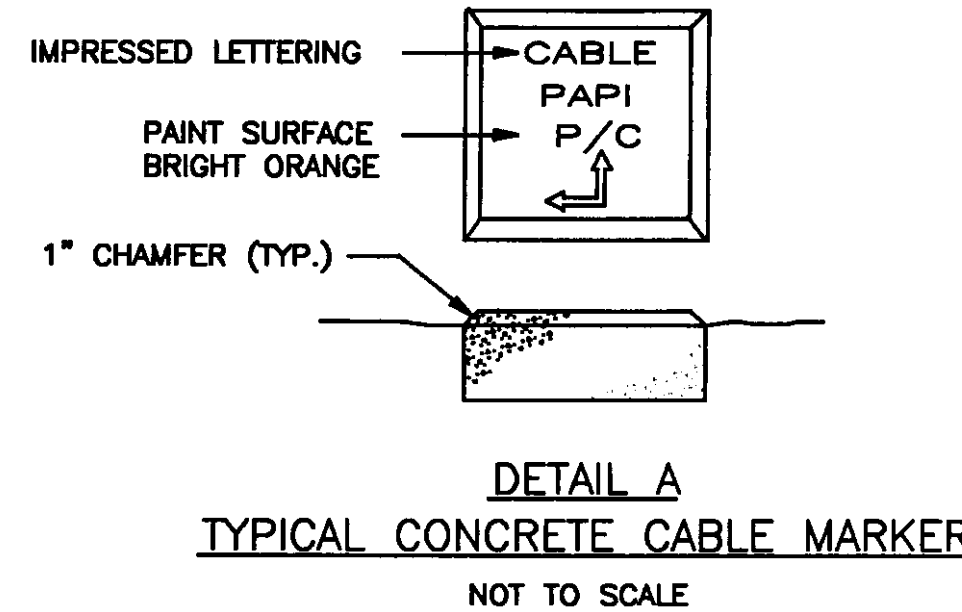
LHA-2
 MOUNTING HEIGHT = 1173.50'
 AIMING ANGLE = 4°10'
 EXIST. GROUND ELEV. = 1168.6±

LHA-1
 MOUNTING HEIGHT = 1173.50'
 AIMING ANGLE = 4°30'
 EXIST. GROUND ELEV. = 1166.9±

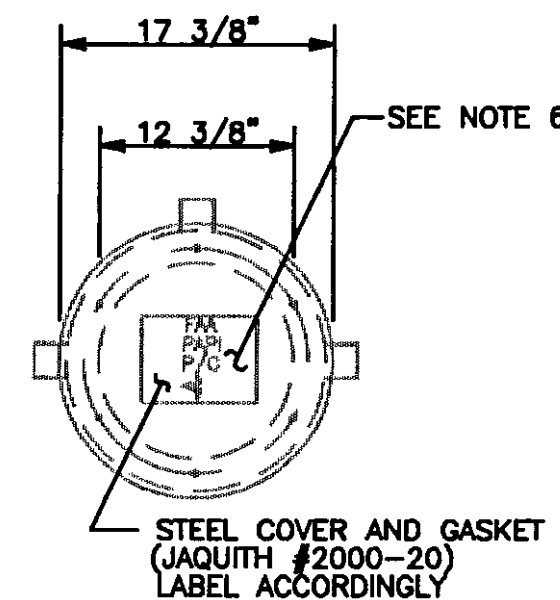
(2) - #8 AWG, 5KV RUNWAY CIRCUIT
 (1) - #10 AWG GROUND
 INSTALLED IN 2" CONDUIT



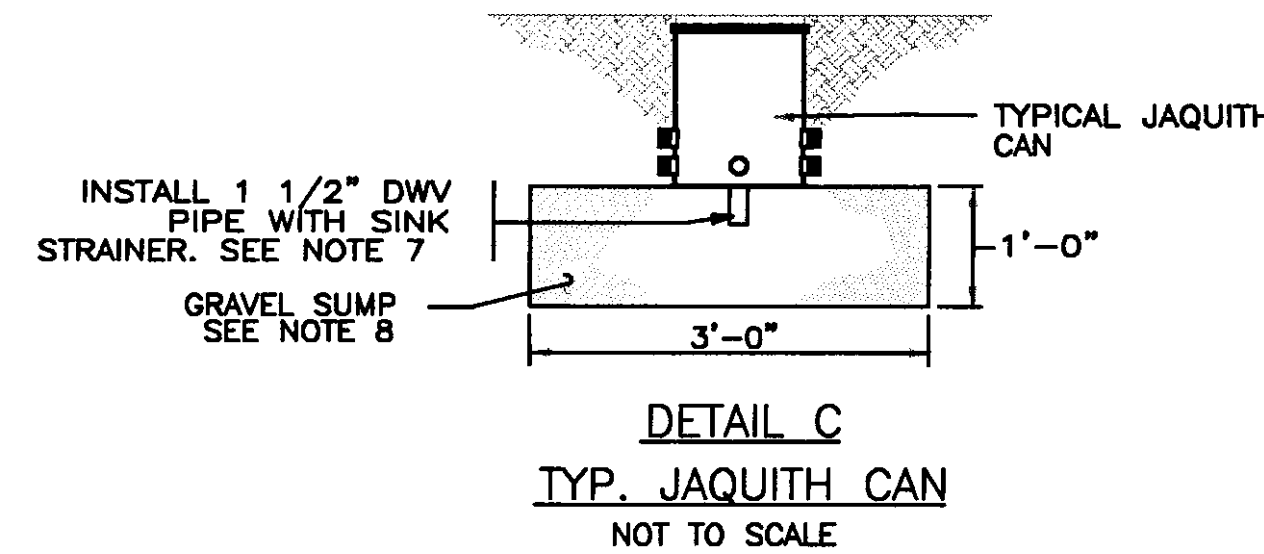
SITE LAYOUT
 NOT TO SCALE



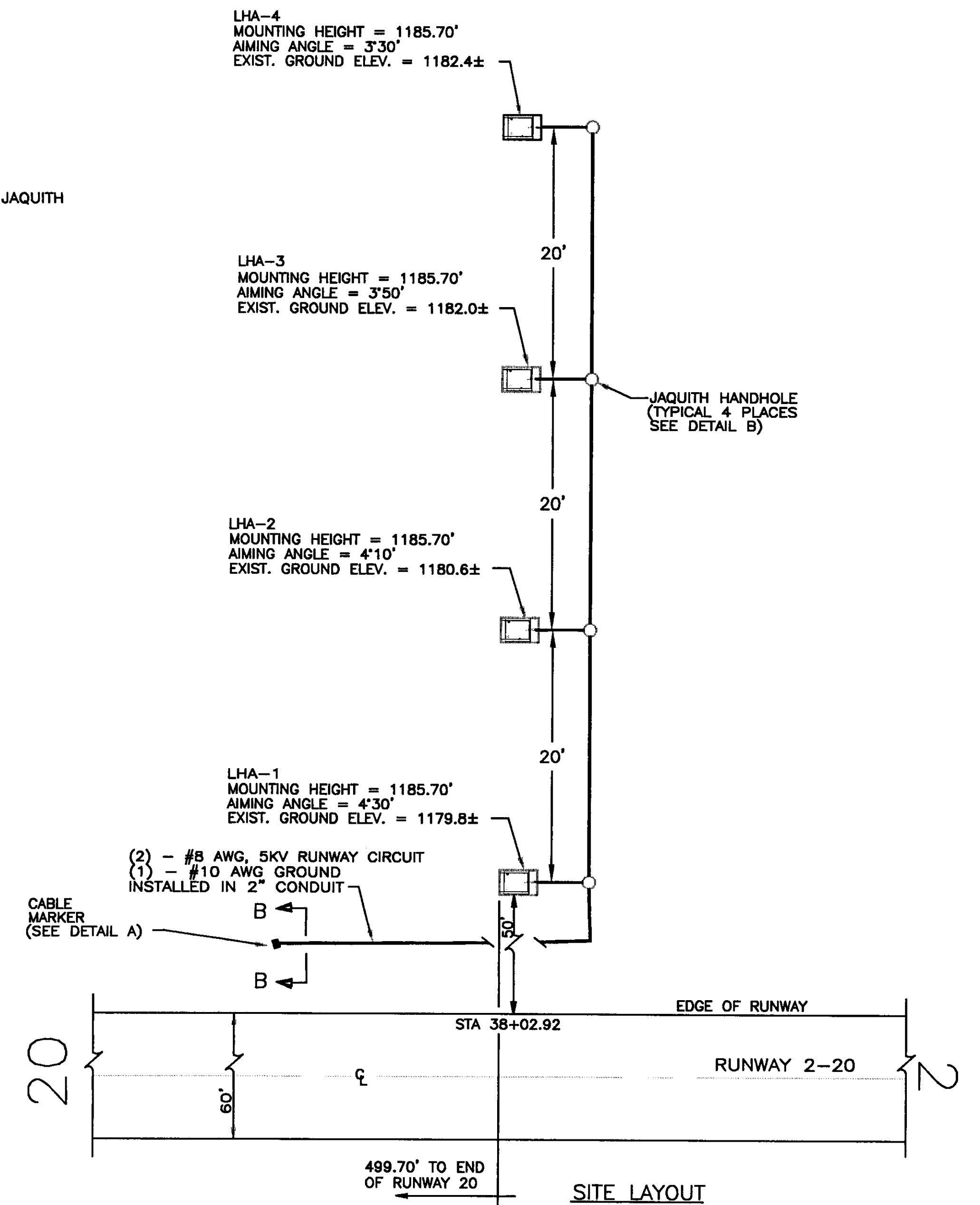
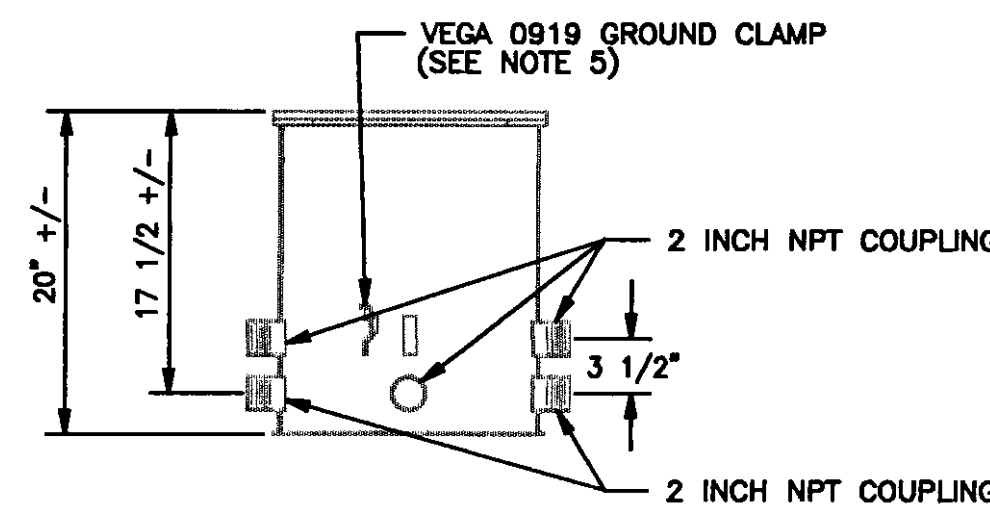
DETAIL A
TYPICAL CONCRETE CABLE MARKER
 NOT TO SCALE



DETAIL B
JAQUITH HANDHOLE
 NOT TO SCALE



DETAIL C
TYP. JAQUITH CAN
 NOT TO SCALE



SITE LAYOUT

LHA-4
 MOUNTING HEIGHT = 1185.70'
 AIMING ANGLE = 3°30'
 EXIST. GROUND ELEV. = 1182.4±

LHA-3
 MOUNTING HEIGHT = 1185.70'
 AIMING ANGLE = 3°50'
 EXIST. GROUND ELEV. = 1182.0±

LHA-2
 MOUNTING HEIGHT = 1185.70'
 AIMING ANGLE = 4°10'
 EXIST. GROUND ELEV. = 1180.6±

LHA-1
 MOUNTING HEIGHT = 1185.70'
 AIMING ANGLE = 4°30'
 EXIST. GROUND ELEV. = 1179.8±

(2) - #8 AWG, 5KV RUNWAY CIRCUIT
 (1) - #10 AWG GROUND
 INSTALLED IN 2" CONDUIT

NO.	DATE	REVISIONS	BY	CK'D

<p>engineering planning management development</p>	STATE OF VERMONT AGENCY OF TRANSPORTATION		DRAWN BY MDL	DATE JULY 2001
	CALEDONIA COUNTY STATE AIRPORT		CHECKED BY N17151	PROJ. NO. N17151
	PAPI GENERAL INSTALLATION DETAILS		PROJ. ENG. JAA	DRAW. NO. C171510009
	SHEET 7 OF 13			