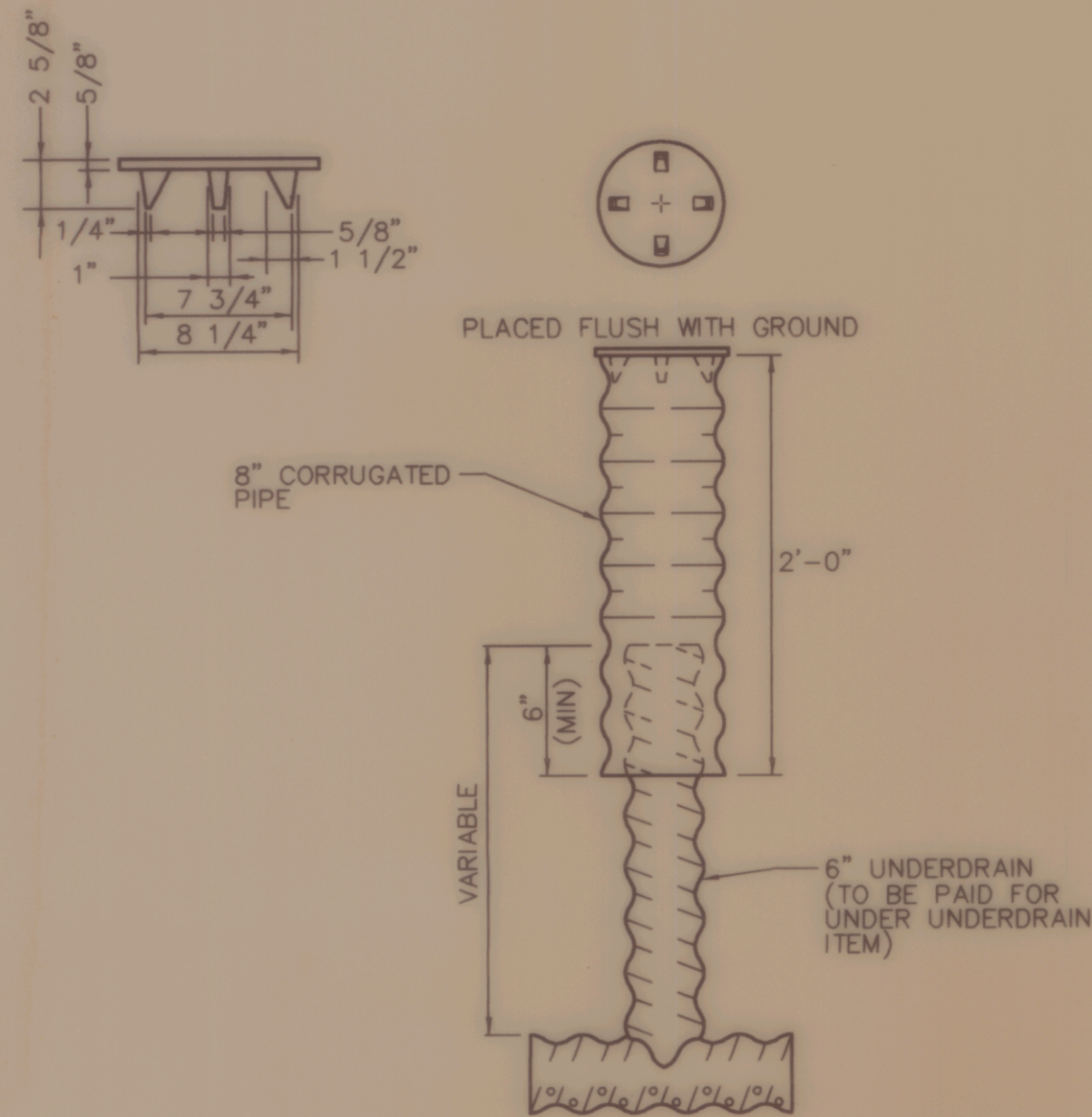
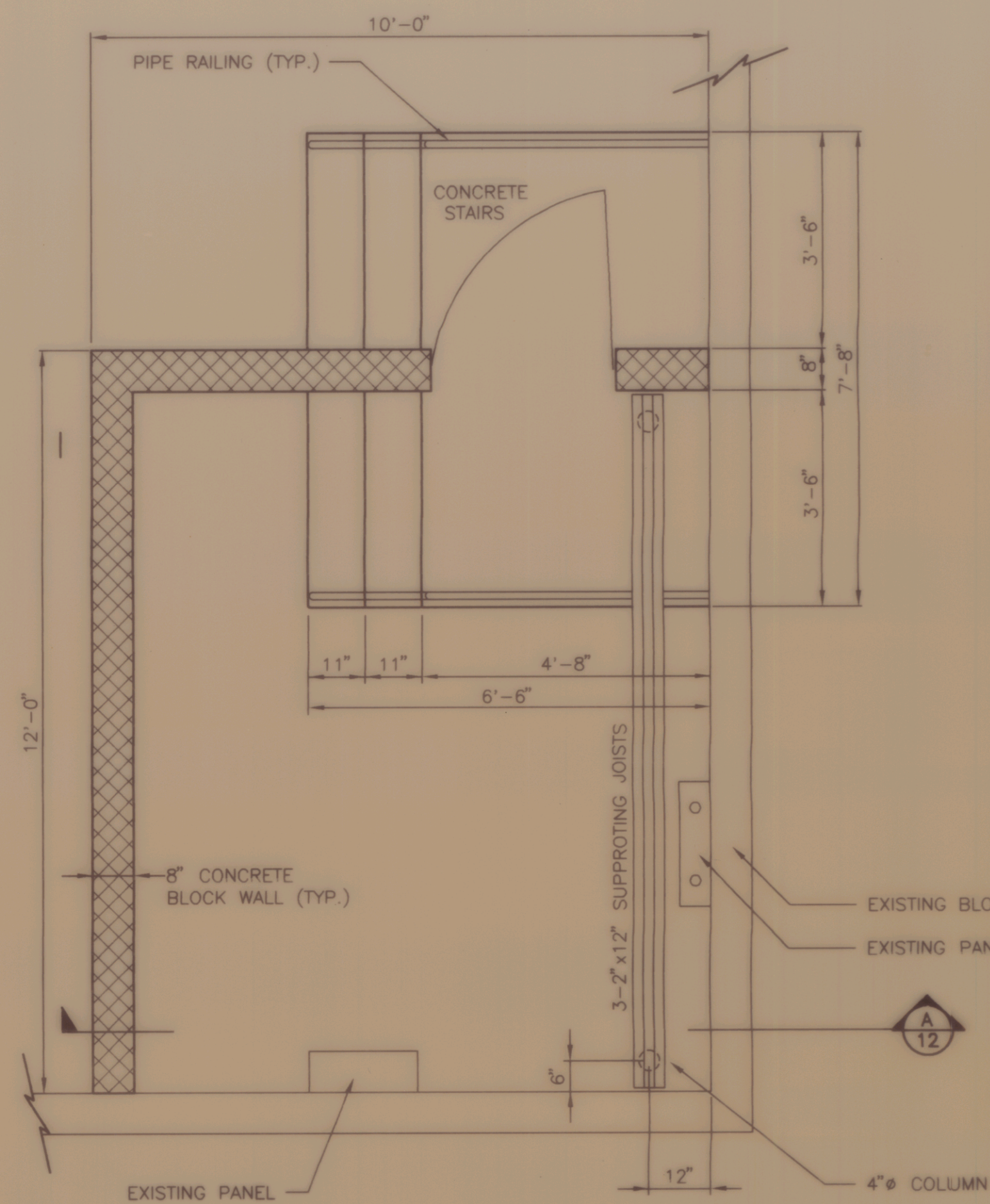


**UNDERDRAIN CONSTRUCTION**  
NOT TO SCALE

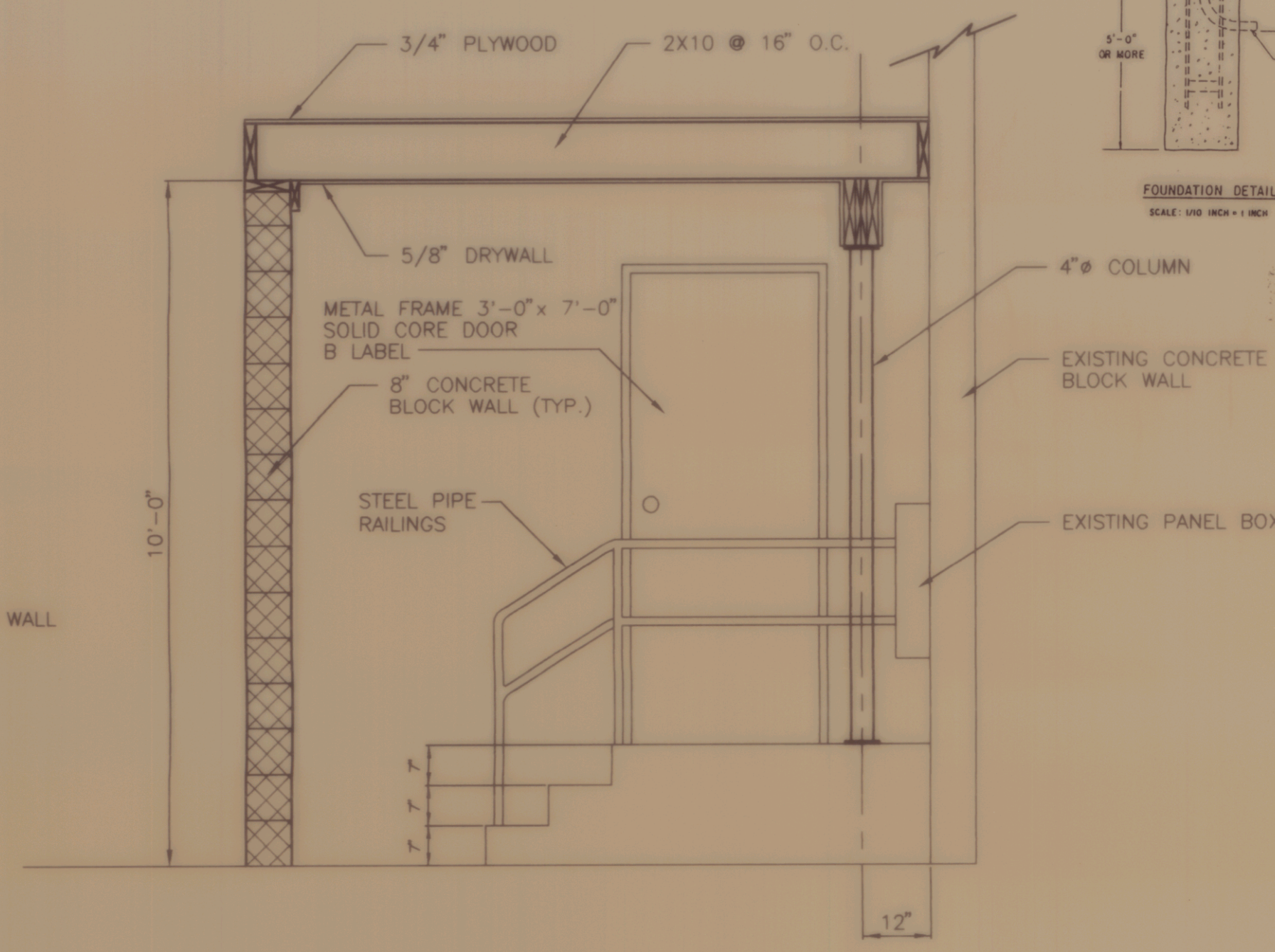


**UNDERDRAIN FLUSHING BASIN**  
NOT TO SCALE

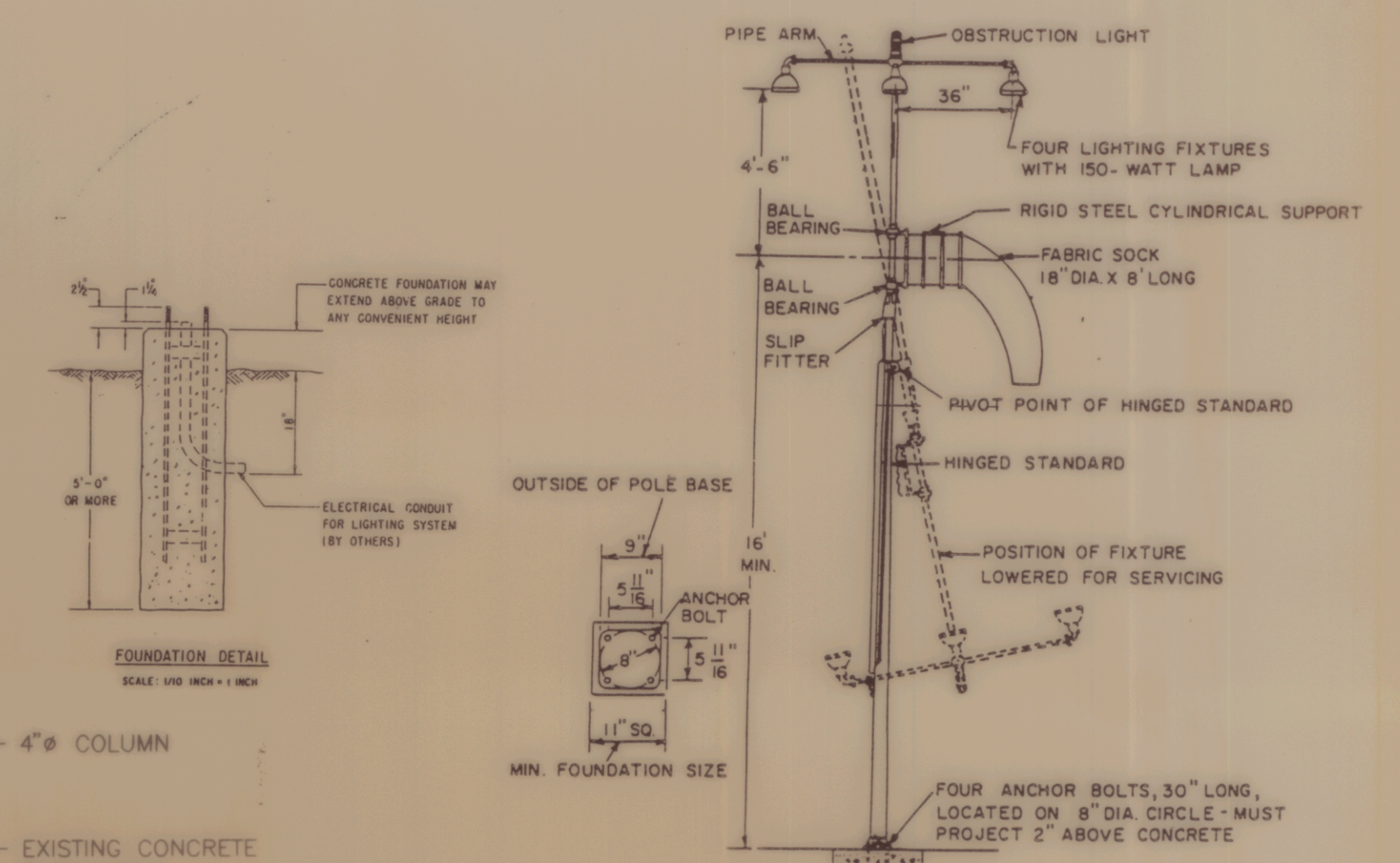
FLUSHING BASINS AT BEGINNING OF LINE SHALL HAVE A 90° ELBOW RATHER THAN A T AS SHOWN ABOVE (ELBOW TO BE PAID FOR UNDER UNDERDRAIN ITEM)



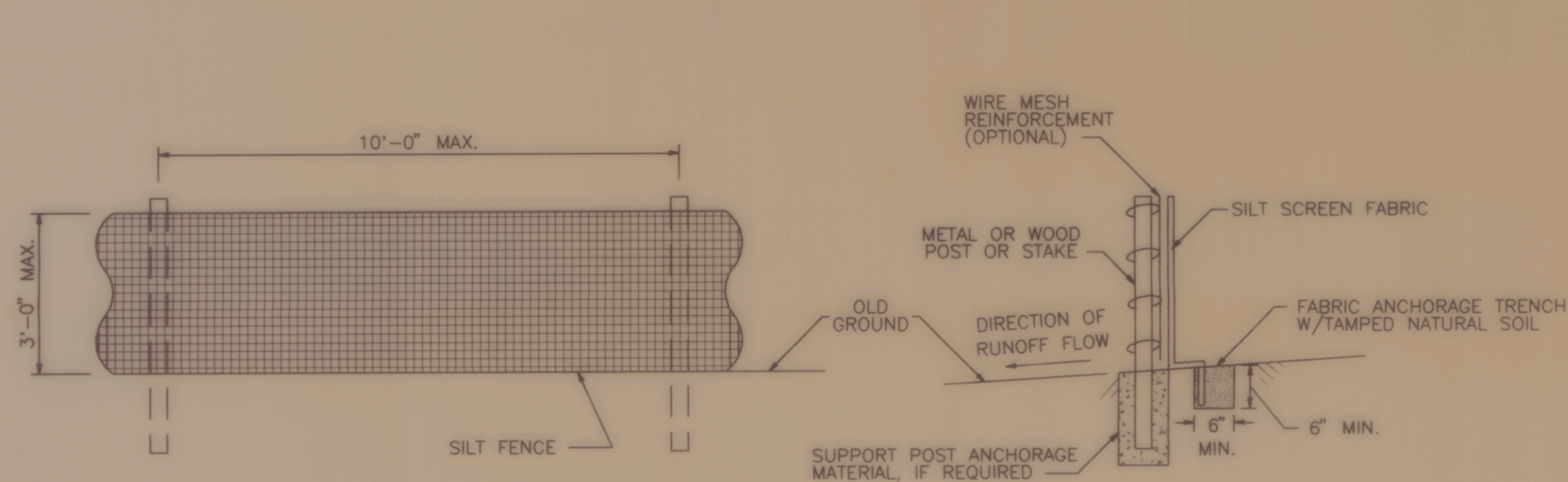
**ELECTRICAL ROOM STRUCTURAL PLAN**  
SCALE: 1/2" = 1'-0"



**SECTION A**  
SCALE: 1/2" = 1'-0"



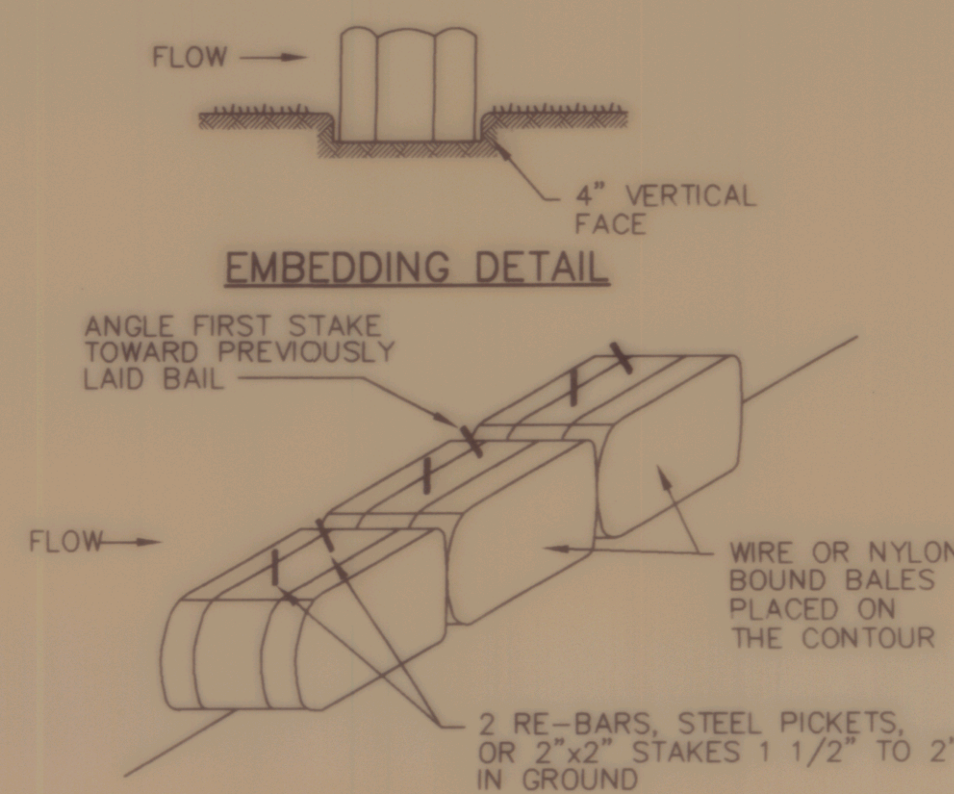
**WIND CONE DETAIL**  
NOT TO SCALE



**ELEVATION**

**SILT FENCE**  
NOT TO SCALE

**END VIEW**

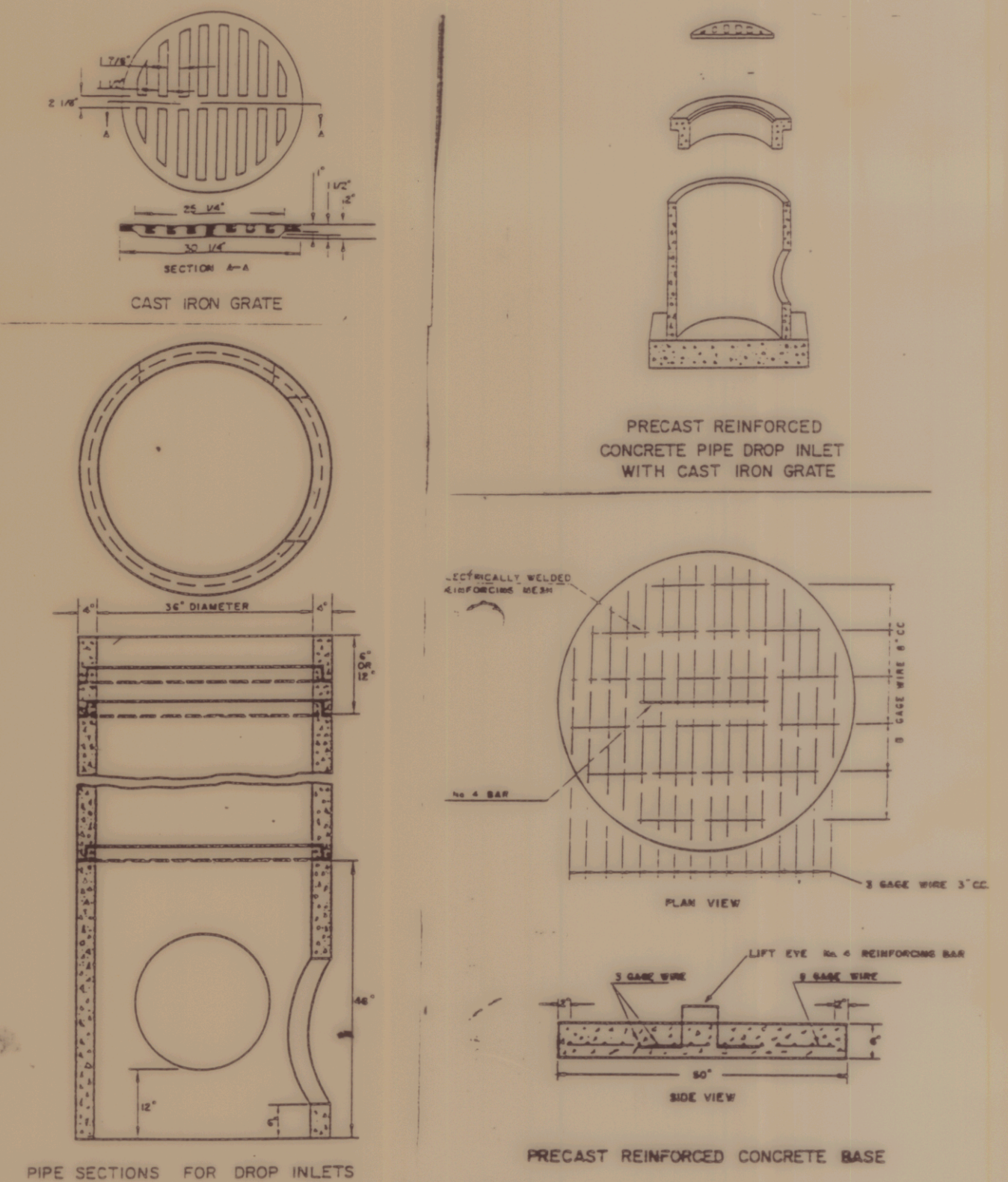


**ANCHORING DETAIL**

**CONSTRUCTION SPECIFICATIONS**

- BALES SHALL BE PLACED IN A ROW WITH ENDS TIGHTLY ABUTTING THE ADJACENT BALES.
- EACH BALE SHALL BE EMBEDDED IN THE SOIL A MINIMUM OF 4".
- BALES SHALL BE SECURELY ANCHORED IN PLACE BY STAKES OR RE-BARS DRIVEN THROUGH THE BALES. THE FIRST STAKE IN EACH BALE SHALL BE ANGLED TOWARD THE PREVIOUSLY LAID BALE TO FORCE BALES TOGETHER.
- INSPECTION SHALL BE FREQUENT AND REPAIR OR REPLACEMENT SHALL BE MADE PROMPTLY AS NEEDED.
- BALES SHALL BE REMOVED WHEN THEY HAVE SERVED THEIR USEFULNESS SO AS NOT TO BLOCK OR IMPEDE STORM FLOW OR DRAINAGE.

**STRAW OR HAY BALE DIKE**  
NOT TO SCALE



**PRECAST REINFORCED CONCRETE CATCH BASIN AND DRAIN MANHOLE**  
NOT TO SCALE

**NOTES**

- SILT FENCE SHALL CONSIST OF AN APPROVED PREFABRICATED SILT FENCE WITH FABRIC ATTACHED TO POSTS AND SHALL BE ASSEMBLED IN THE FIELD ACCORDING TO THE MANUFACTURER'S INSTRUCTIONS. WIRE MESH REINFORCEMENT AND/OR CLOSER POST SPACING MAY BE ORDERED BY THE ENGINEER IN AREAS WHERE HIGH RUNOFF VOLUMES ARE ANTICIPATED, OR IN LOW SPOTS WHERE SEDIMENT WILL BE COLLECTED.
- PRIOR TO BEGINNING EARTHWORK OPERATIONS AT LOCATIONS DIRECTED BY THE ENGINEER, SILT FENCE SHALL BE CONSTRUCTED ALONG THE TOE OF PROPOSED EMBANKMENT SLOPES AT THE LIMITS OF CLEARING.

**MISCELLANEOUS DETAILS**

OF  
**CALEDONIA COUNTY STATE AIRPORT**  
PREPARED FOR  
**VERMONT AGENCY OF TRANSPORTATION**

SCALE: AS NOTED DATE: DEC. 6, 1994

DESIGNED BY: RLS  
DRAWN BY: GNS  
CHECKED BY: JAA  
APPROVED BY: DAF

**Dubois & King**  
ROUTE 66 PROFESSIONAL PLAZA  
RANDOLPH, VERMONT  
(802) 728-3376

SHEET 12 OF 14 JOB NO. N12603

NO.	DATE	REVISION