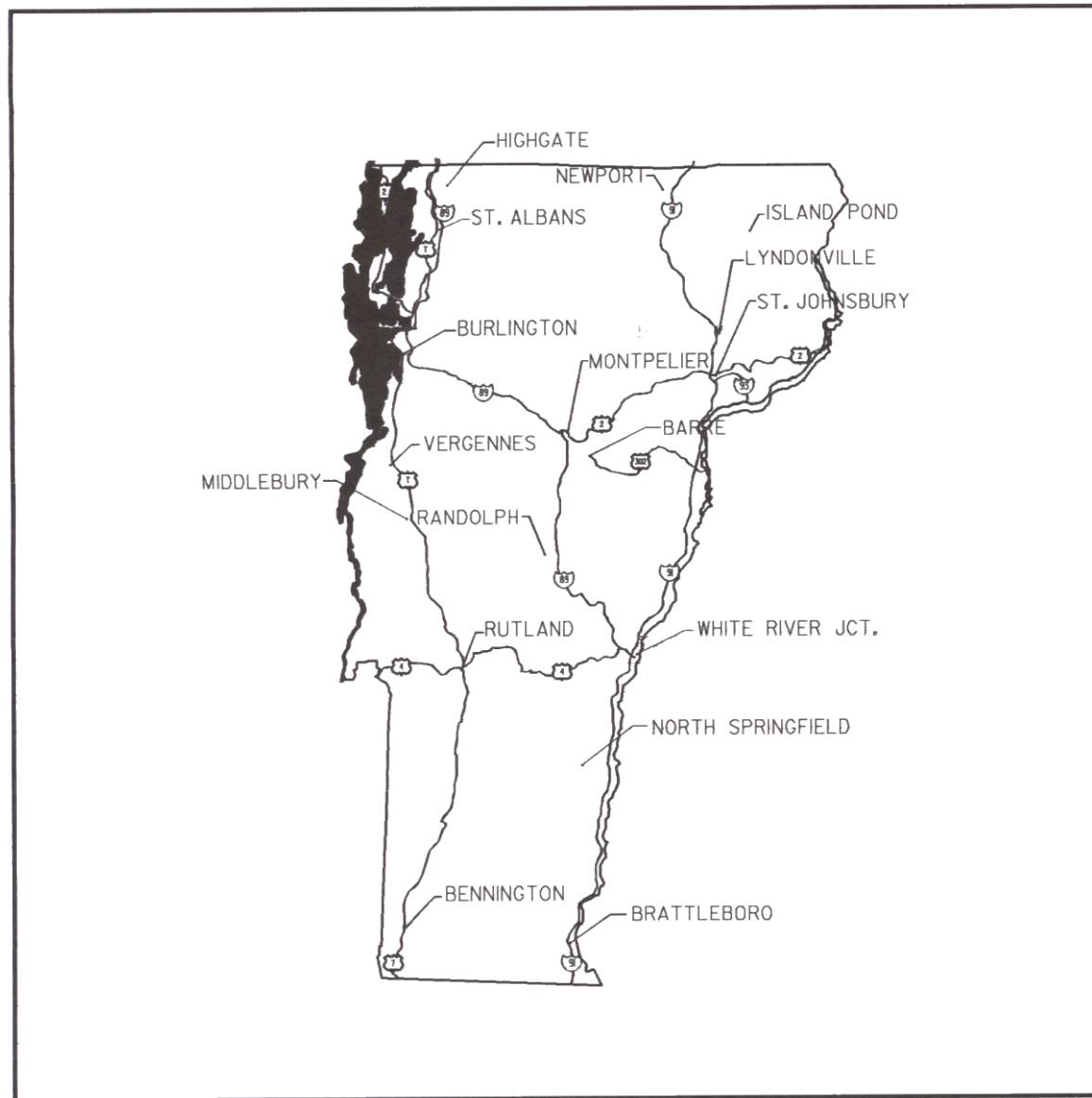
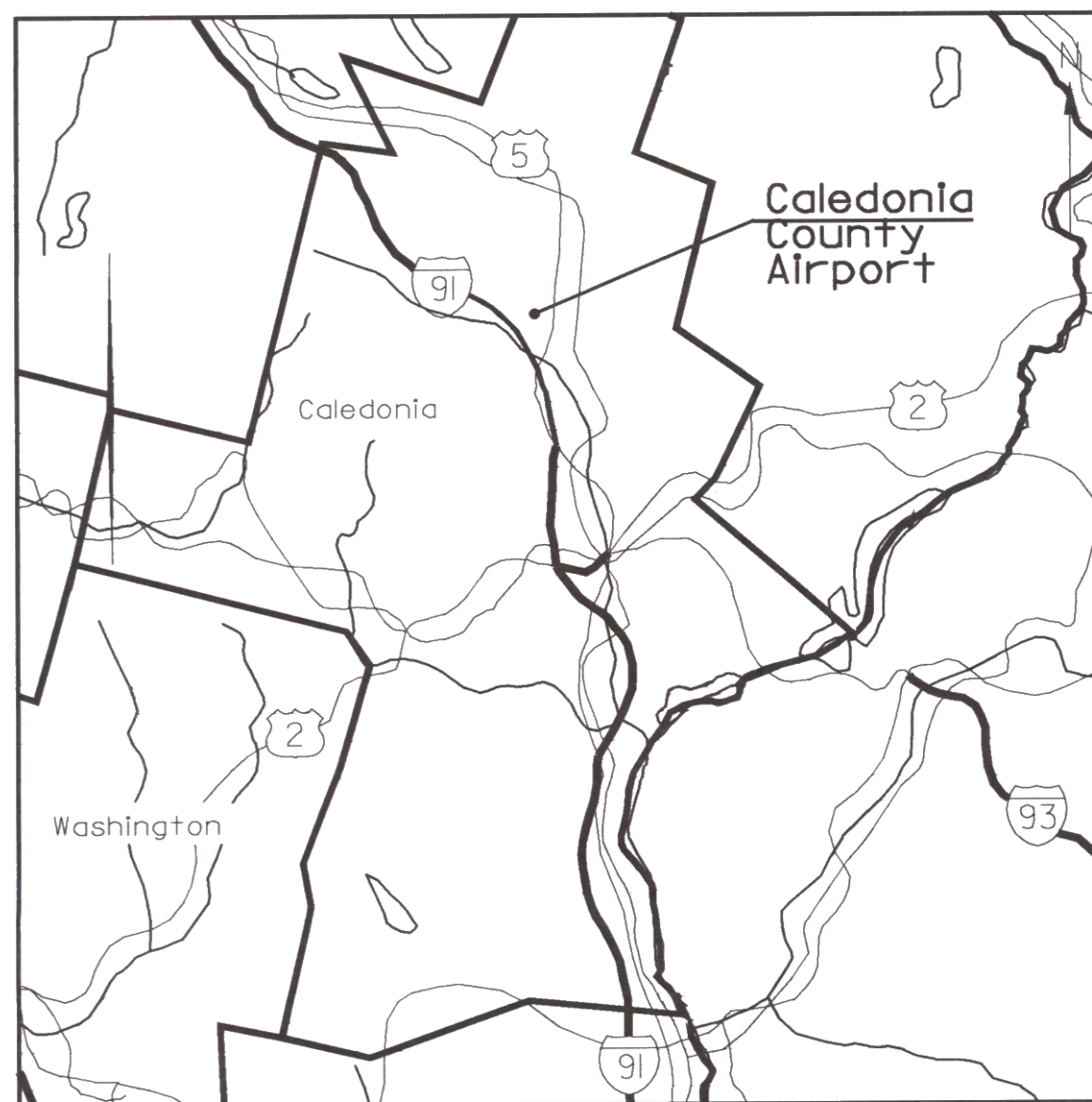


AIRPORT LAYOUT PLAN UPDATE

CALEDONIA COUNTY STATE AIRPORT LYNDONVILLE, VERMONT



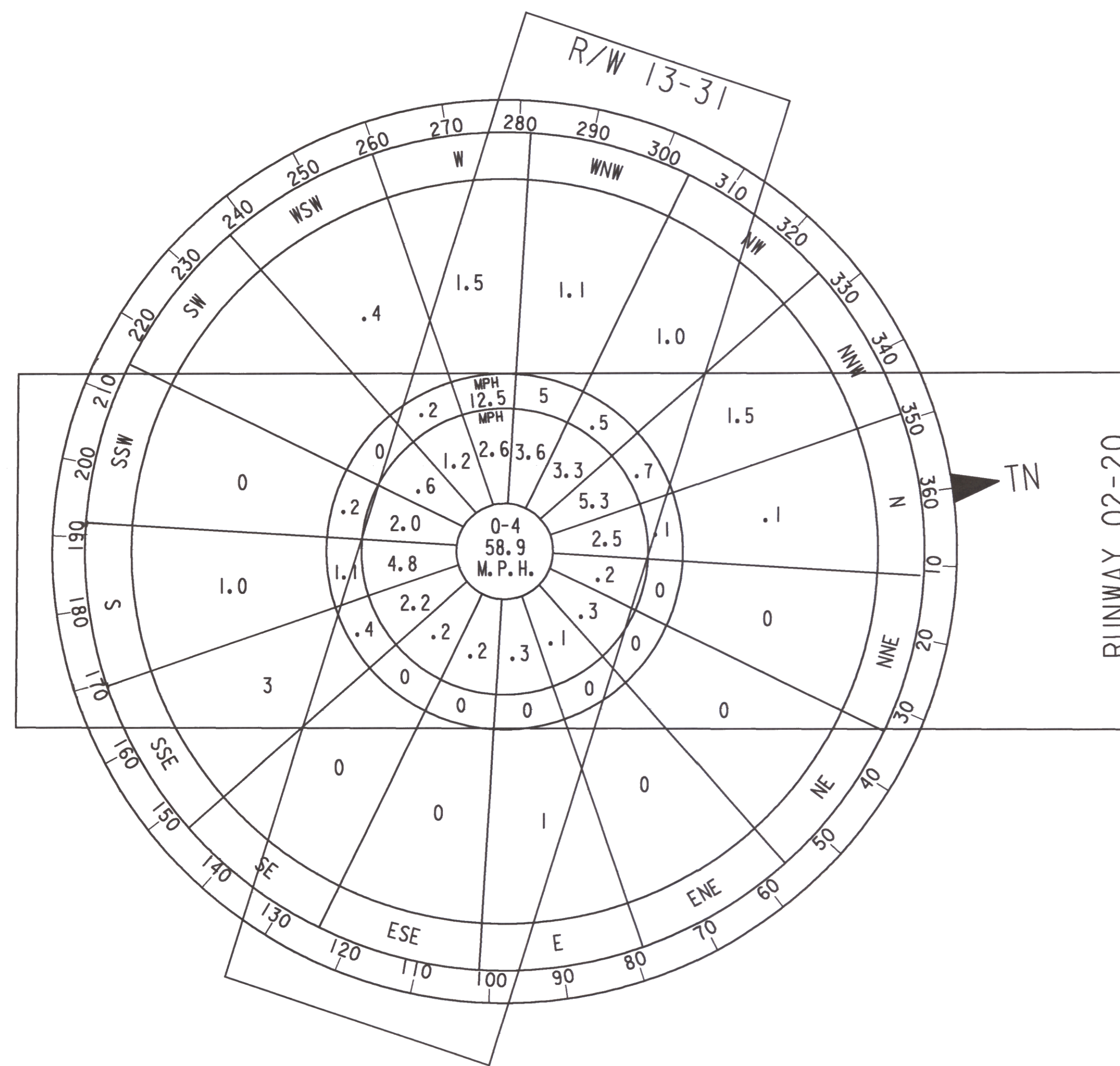
LOCATION MAP



VICINITY MAP

SHEET	TITLE
1	COVERSHEET
2	EXISTING ALP
3	ULTIMATE ALP
4	TERMINAL AREA PLAN
5	PLAN & PROFILE
6	FAR PART 77
7	LAND USE PLAN

INDEX OF SHEETS



MAY 2000



OFFICES:
 No. Springfield, Vermont
 Montpelier, Vermont
 Manchester, New Hampshire
 Portland, Maine
 Westford, Massachusetts
 Greenfield, Massachusetts
 Boston, Massachusetts
 Port Charlotte, Florida
 Sarasota, Florida
 Naples, Florida
 Saratoga Springs, New York

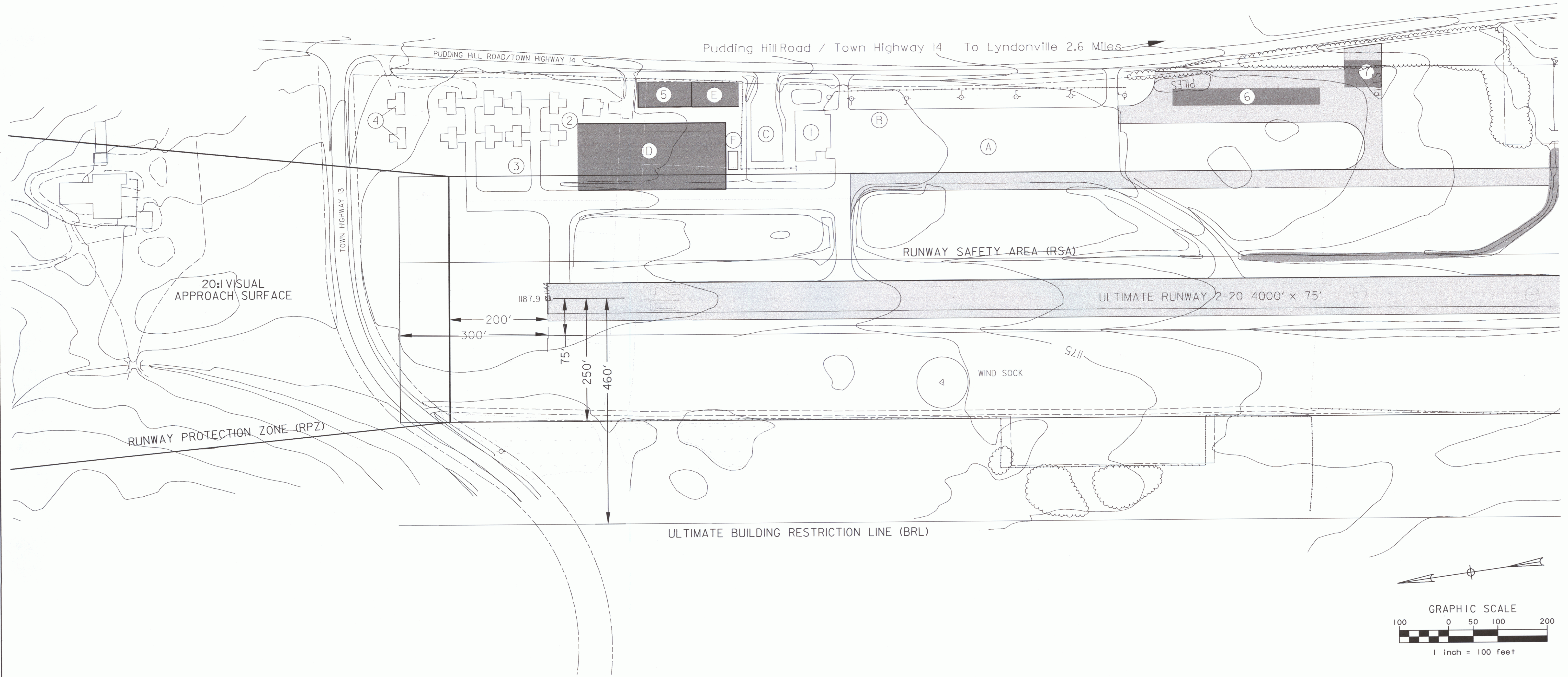
ENGINEERING DISCIPLINES
 Civil
 Electrical
 Environmental
 Industrial
 Mechanical
 Solid Waste
 Structural
 Transportation

ASSOCIATED DISCIPLINES
 Construction Management
 Site Assessments
 Surveying

APPLIED SCIENCES
 Geologic
 Hydrologic
 Water Quality

EXISTING	ULTIMATE	BUILDINGS
①		Terminal / Hangar
②		Historic Schoolhouse (CAP)
③		T-Hangars
④		T-Hangars Under Construction
	⑤	Terminal / State Office *
	⑥	Nested T-Hangars*
	⑦	Corporate FBO Hangar **
EXISTING	ULTIMATE	TERMINAL AREA PAVEMENT
Ⓐ		Main Apron
Ⓑ		6000 Gallon Avagas Above Ground Storage
Ⓒ		Upper Ramp
	Ⓓ	Itinerant Apron
	Ⓔ	Auto Parking

* Maximum allowable height 20'.
 ** Maximum allowable height 25'.

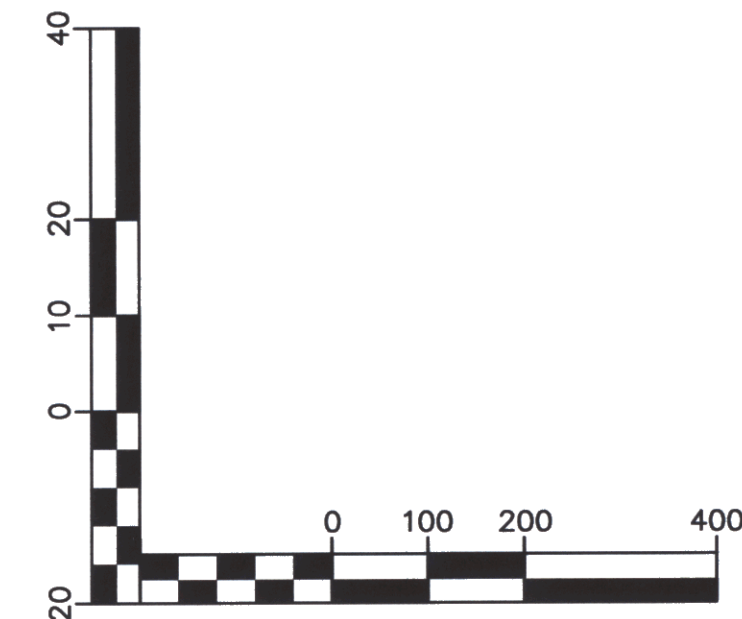
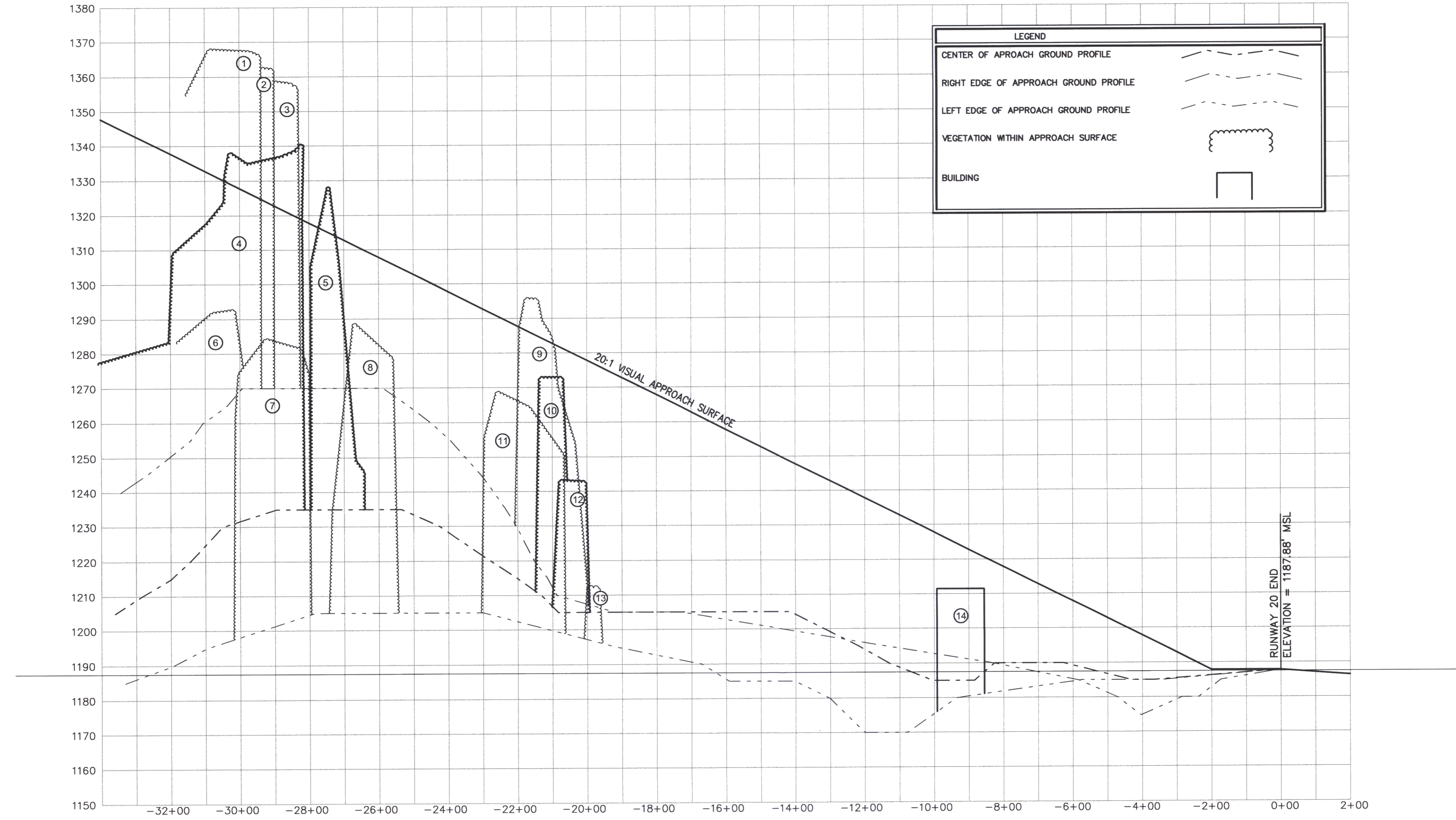
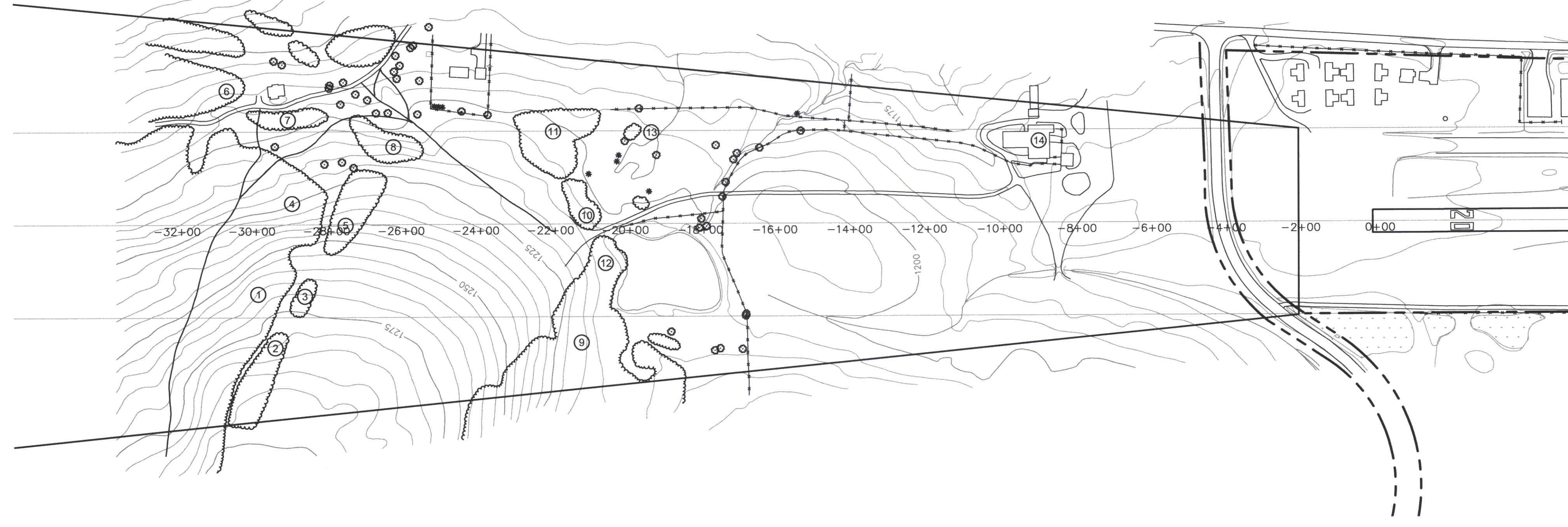


Rev.	Description	By	Date

VERMONT
 CALEDONIA COUNTY STATE AIRPORT
TERMINAL AREA PLAN
 LYNDONVILLE

Project No.	8190014
Proj. Manager	MC
Proj. Designer	GR
Drawn By	JUL
Checked By	MC
Scale	1" = 100'
Approved	
Date	9-7-99

...:\Chloronia\terminal_area.dwg 04/19/01 01:57:08 PM



CALEDONIA COUNTY STATE AIRPORT

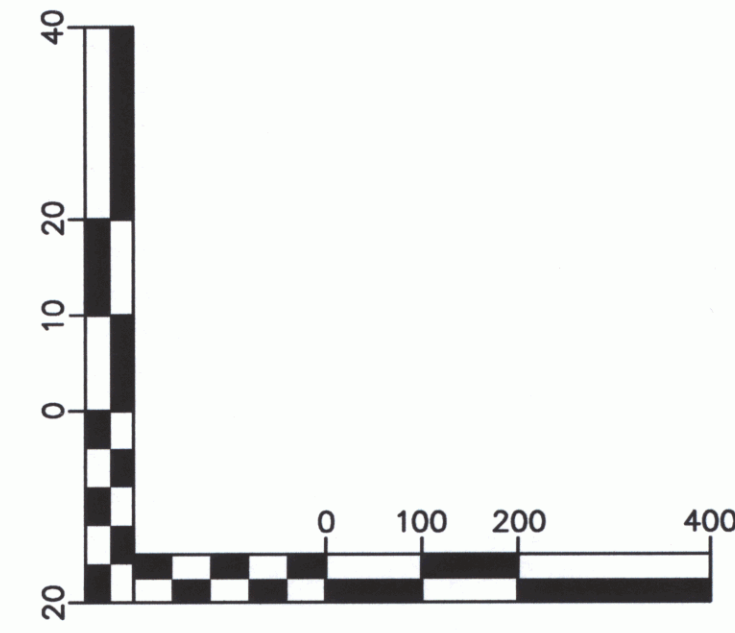
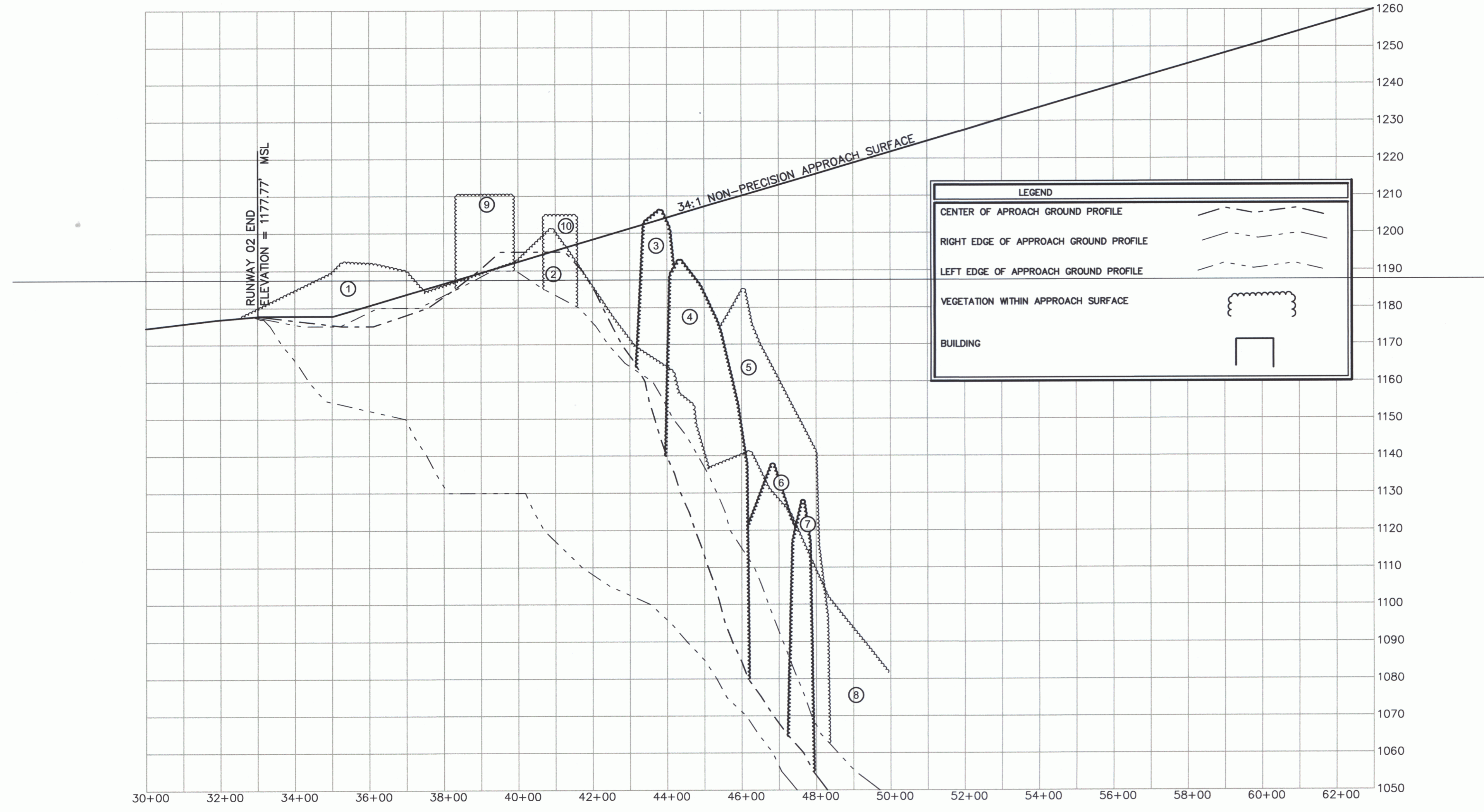
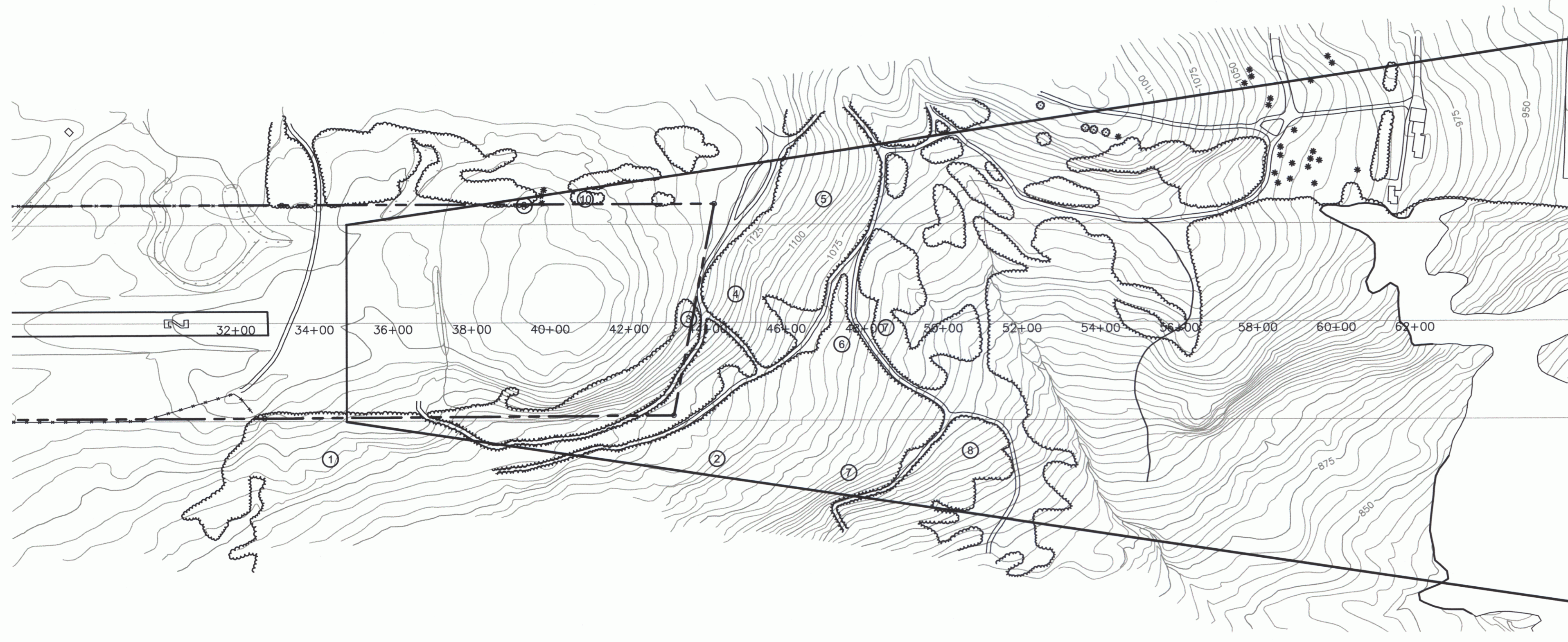
LYNDONVILLE
RUNWAY 20
FAR PART 77 PLAN AND PROFILE

Project No.	8190014
Proj. Manager	JW
Proj. Designer	JW
Drawn By	MRS
Checked By	JW
Scale	1" = 200'
Approved	DCD
Date	06/00

Sheet 1 of 2

Rev.	Description	By	Date

VERMONT



Project No.	8190014
Proj. Manager	JW
Proj. Designer	JW
Drawn By	MRS
Checked By	JW
Scale	1" = 200'
Approved	DCD
Date	06/00

Sheet 2 of 2
D

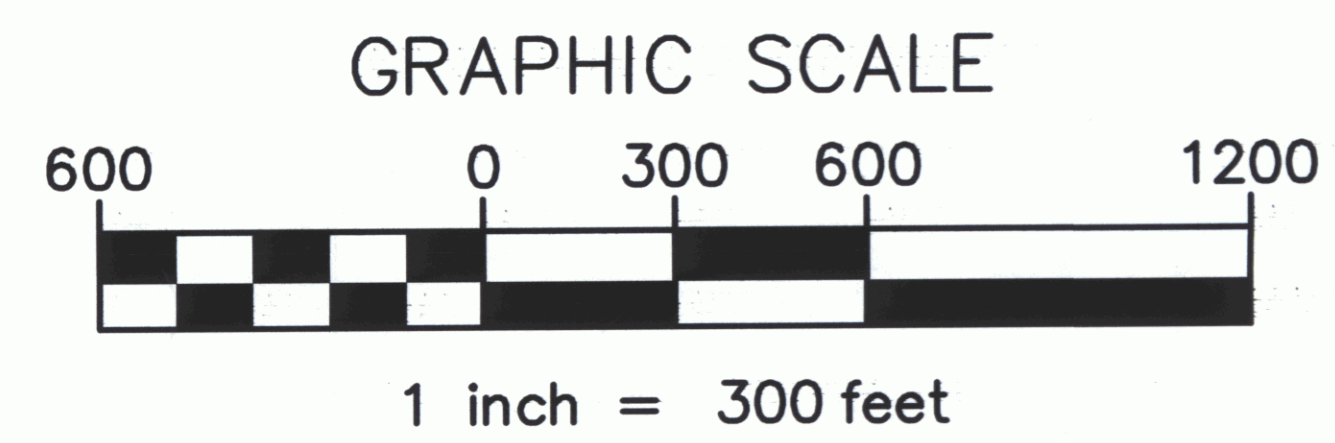
CALEDONIA COUNTY STATE AIRPORT

**RUNWAY 02
FAR PART 77 PLAN AND PROFILE**

LYNDONVILLE

VERMONT

Rev.	Description	By	Date



DH
Dufresne-Henry
Consulting Engineers
Portland, Maine