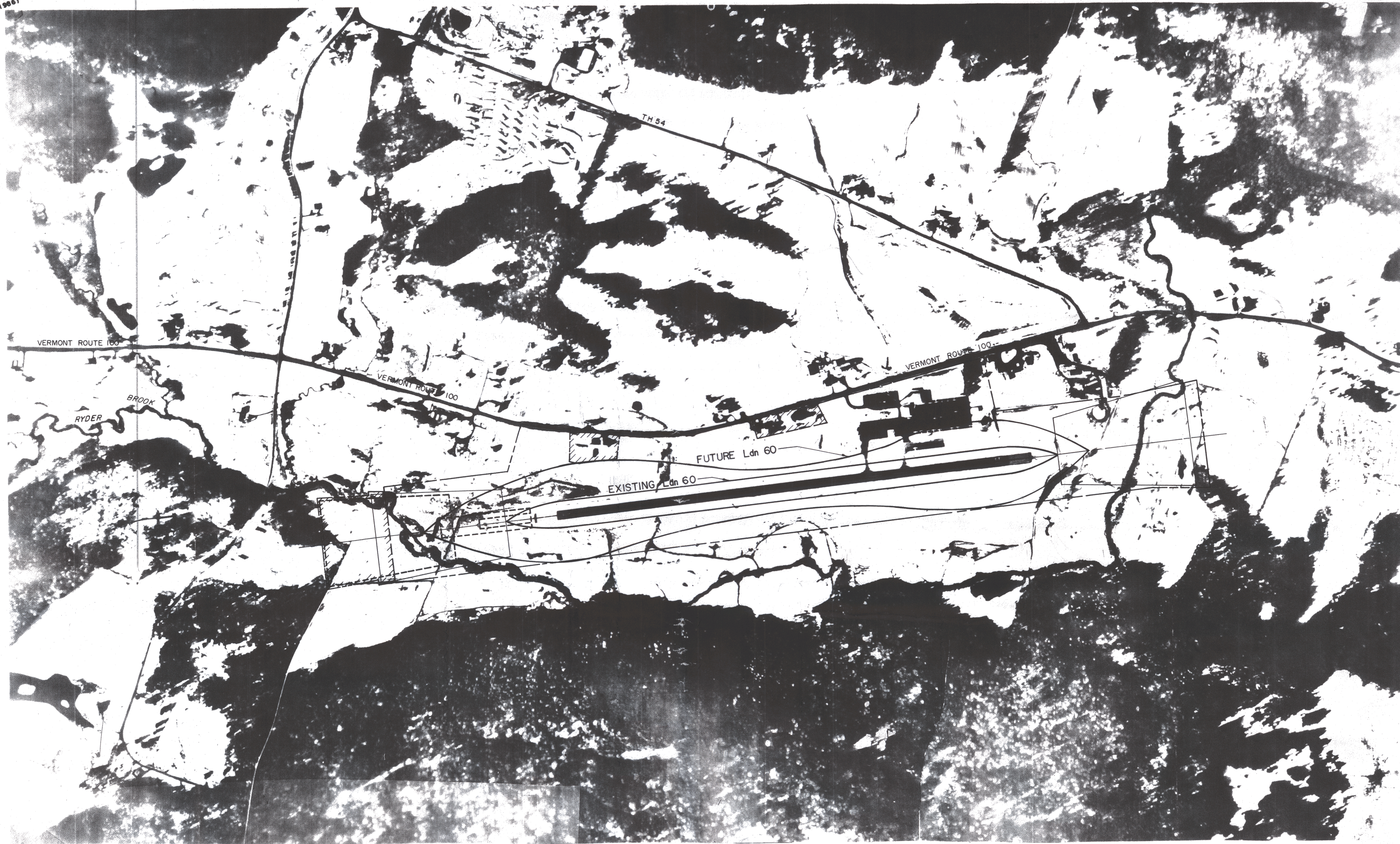


MAGNETIC
16° 00' (USGS 1986)



NO. DESCRIPTION REVISION		MORRISVILLE/STOWE STATE AIRPORT MORRISVILLE, VERMONT AIRPORT MASTER PLAN LAND USE PLAN	DRAWN BY D. BILLOREMI	ENGR. CHK.
			SCALE 1" = 400'	TRADE COORD. CHK.
			DATE MAY, 1990	TECH. MGR.
			PROJECT NO. 88-2742	PROJ. MGR.
		FILE NO. 27421701		
		DRAWING NO. 8		
		SHEET 8 OF 8	REV. NO.	

GERALD D'AMICO, P.E.
IN ASSOCIATION WITH
RISTFROST
RIST-FROST ASSOCIATES, P.C.
CONSULTING ENGINEERS

ROXBURY,
VERMONT 05669
LACONIA,
NEW HAMPSHIRE
GLENS FALLS,
NEW YORK