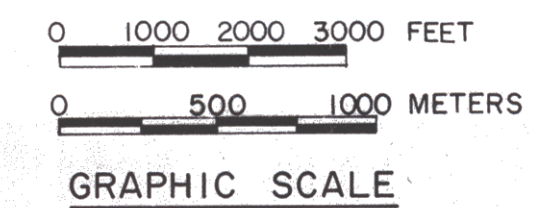
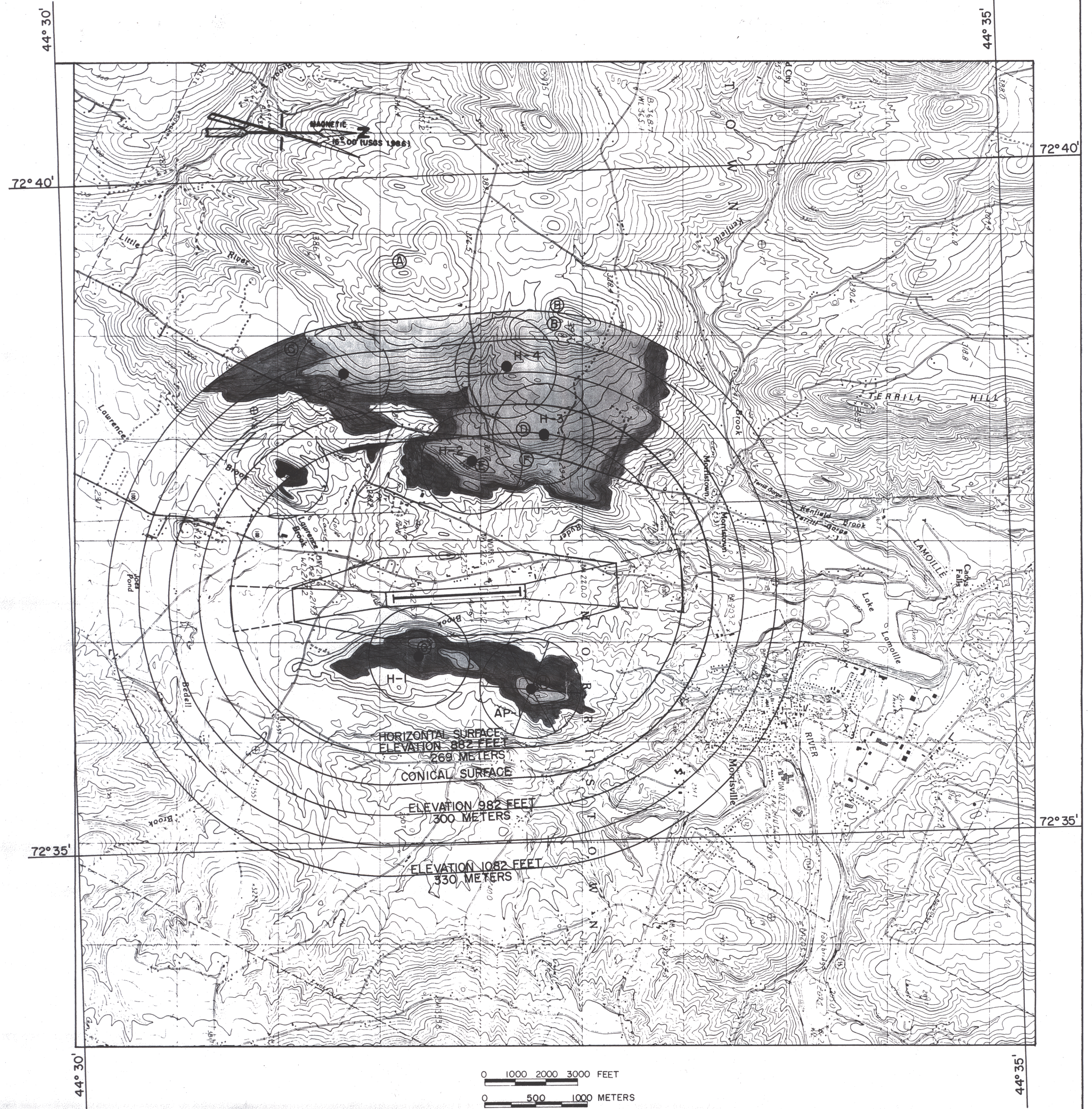


NOTES

- SEE DRAWING NO. 3 (EXISTING TOPOGRAPHY) AND DRAWING NO. 6 (PLAN AND PROFILE) FOR FURTHER DETAIL OF GROUND OBSTRUCTIONS IN IMMEDIATE AIRPORT ENVIRONMENT.
- BASE MAP IS USGS QUADRANGLE MAPS 44072-E5-TM-024 (1986) AND 44072-E6-TM-024 (1986).
- HORIZONTAL DATUM IS BASED ON VERMONT GRID COORDINATE SYSTEM. VERTICAL DATUM IS BASED ON MEAN SEA LEVEL.

LEGEND

- TREE PENETRATIONS (ASSUMED 50' TREE HEIGHT)
- GROUND PENETRATIONS
- EXISTING HAZARD BEACONS
CIRCLE OF INFLUENCE (RADIUS) = 1500'
(H-1 TO H-4)
- 36" ROTATING BEACON (AP-1)
- FUTURE HAZARD BEACONS
- GROUND ELEVATIONS
- GROUND ELEVATIONS PROFILE



NO. DESCRIPTION REVISION	BY DATE	MORRISVILLE/STOWE STATE AIRPORT MORRISVILLE, VERMONT		DRAWN BY RT. McLAUGHLIN	ENGR. CHK. TRADE COORD. CHK.	
		AIRPORT MASTER PLAN IMAGINARY SURFACES - F.A.R. PART 77		SCALE AS SHOWN	TECH. MGR.	
		GERALD D'AMICO, P.E. IN ASSOCIATION WITH RISTFROST RIST-FROST ASSOCIATES, P.C. CONSULTING ENGINEERS		ROXBURY, VERMONT 05669 LACONIA, NEW HAMPSHIRE GLENS FALLS, NEW YORK	DATE MAY, 1990	PROJ. MGR.
				FILE NO. 27421701	REV. NO.	
				DRAWING NO. 7		
				SHEET 7 OF 8		