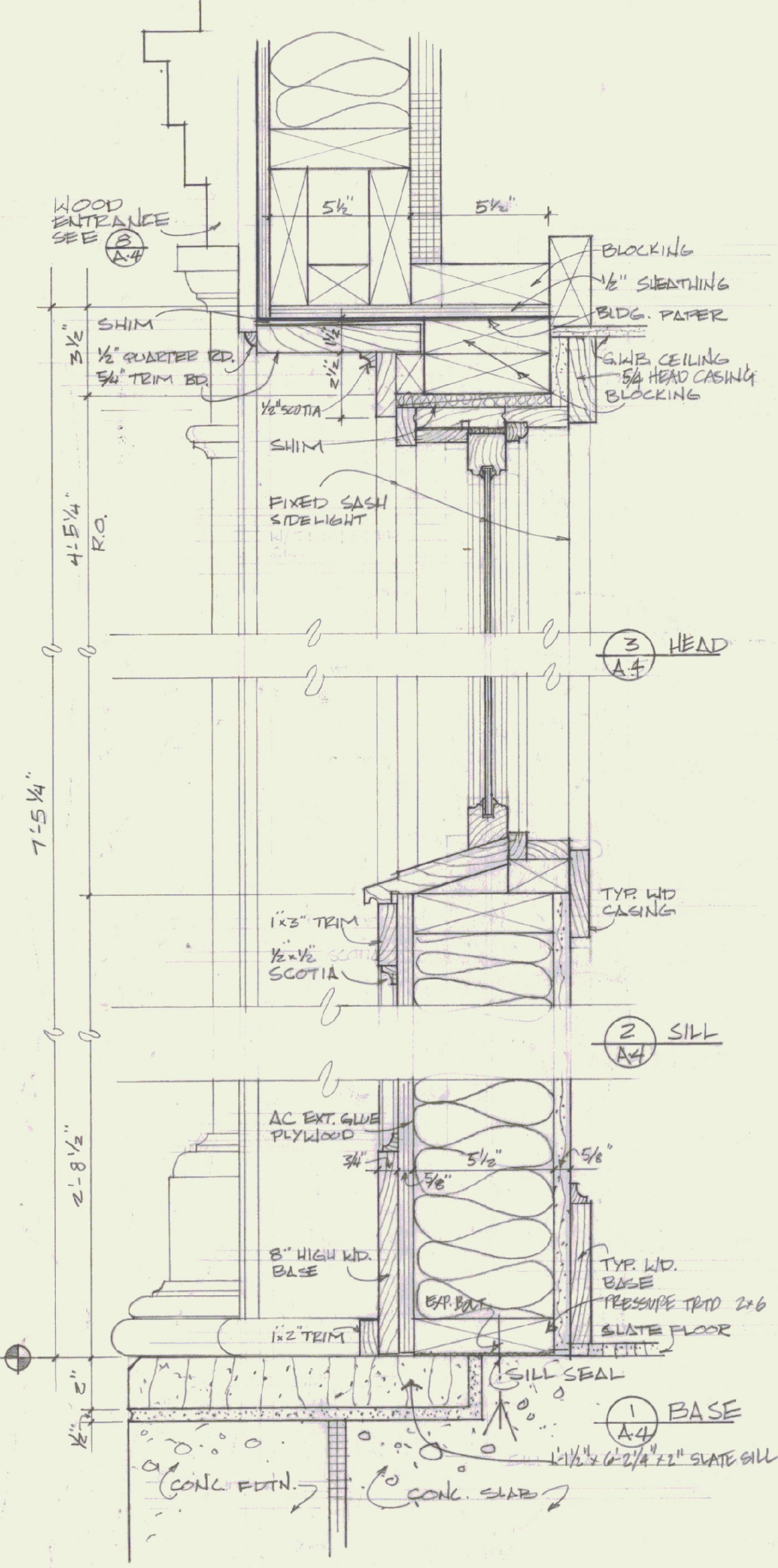
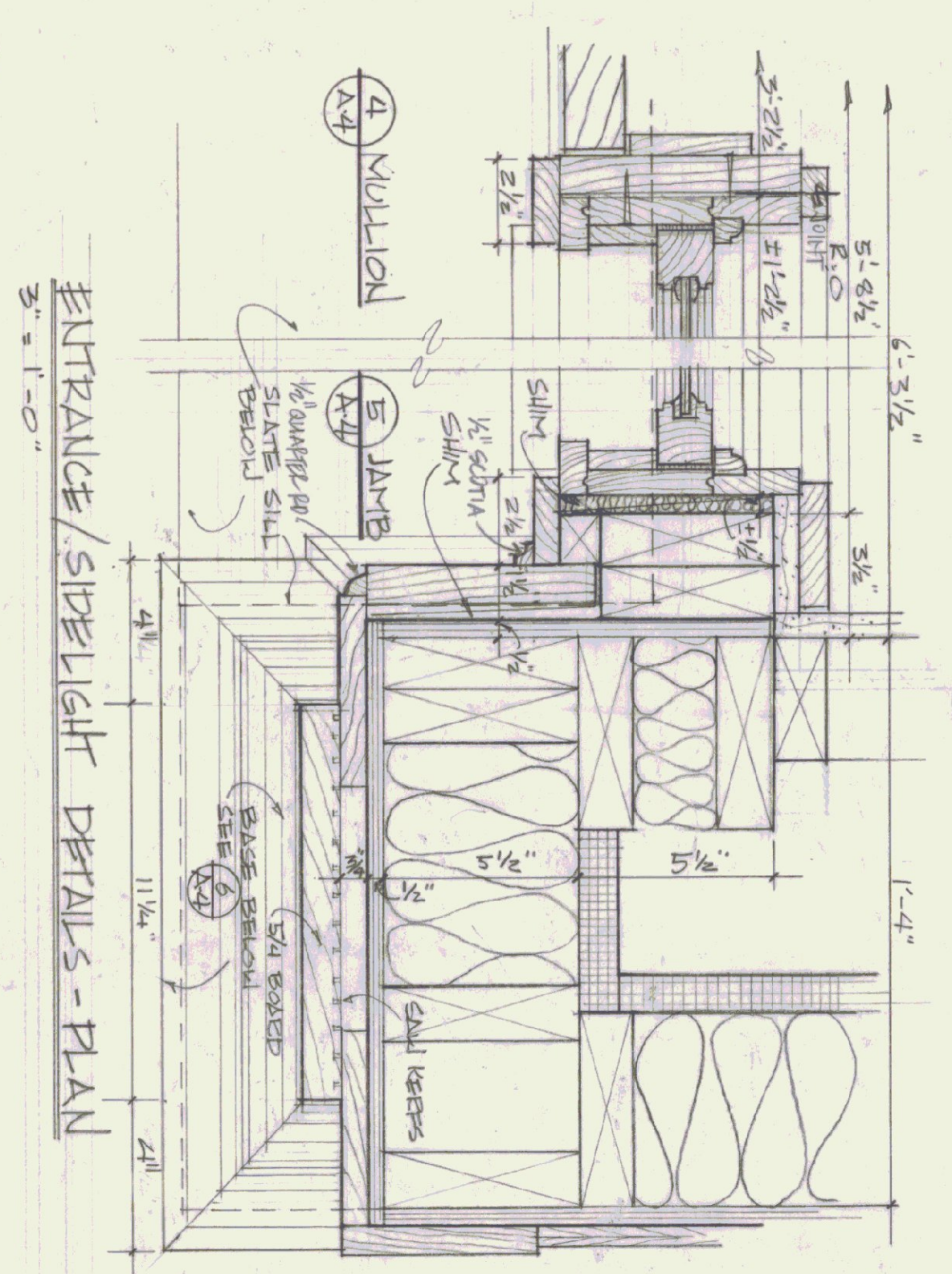


SECTION - 3  
1/2" = 1'-0"

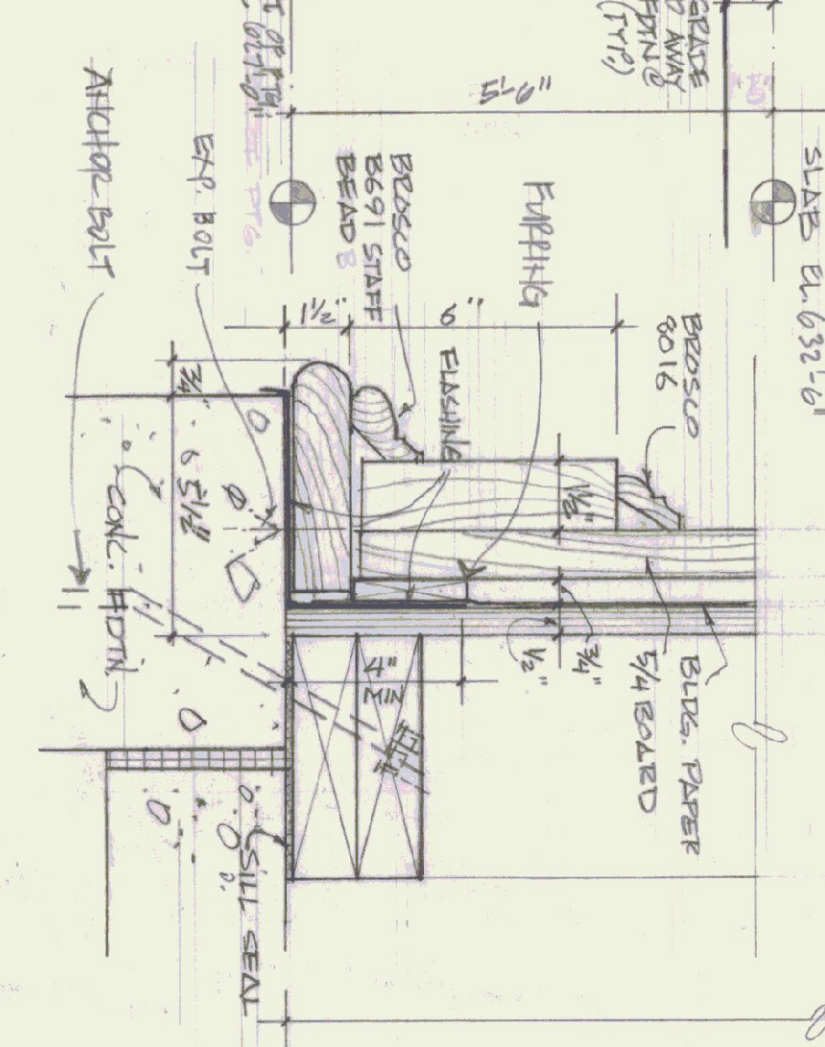


SIDELIGHT DETAILS @ ENTRANCE - SECTION  
3/8" = 1'-0"

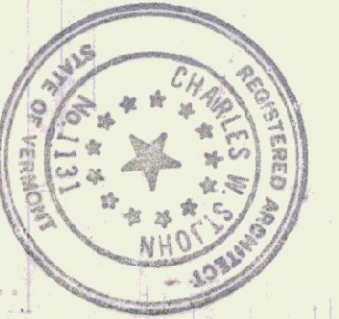
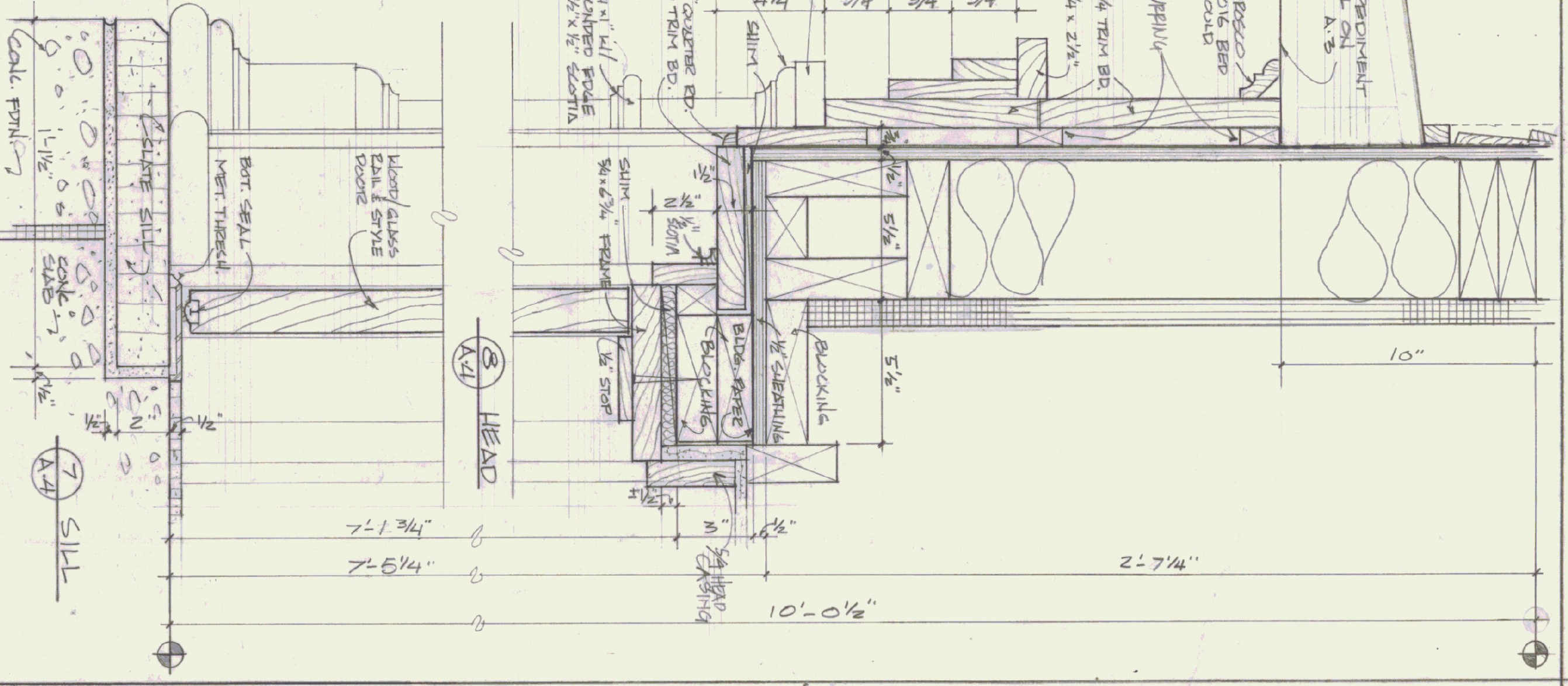


ENTRANCE/SIDELIGHT DETAILS - PLAN  
3/8" = 1'-0"

ENTRANCE COLUMN BASE  
3/8" = 1'-0"



ENTRANCE/DOOR DETAILS - SECTION  
3/8" = 1'-0"



STATE OF VERMONT		DIVISION OF STATE BUILDINGS	
AGENCY OF ADMINISTRATION		MONTPELIER, VERMONT	
<b>SECTIONS AND DETAILS</b>			
NEW TERMINAL BUILDING			
MORRISVILLE/STONE STATE AIRPORT			
VERMONT			
DATE: MAY 6, 1963	SCALE: AS NOTED	REVISIONS:	DWG. NO. A-4
DRAWN BY: S. REMICK	APPROVED BY: CWS		2 OF 10