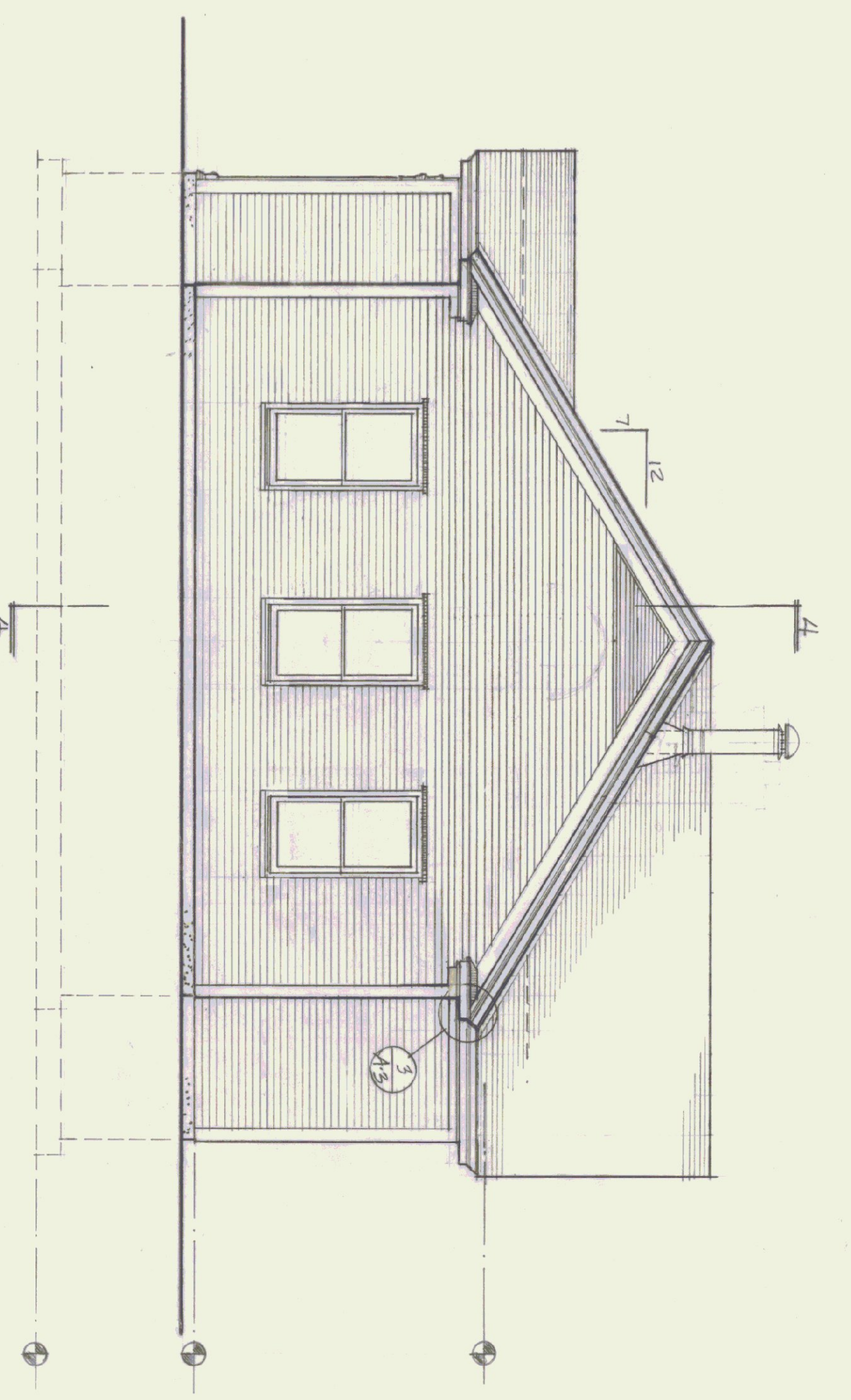
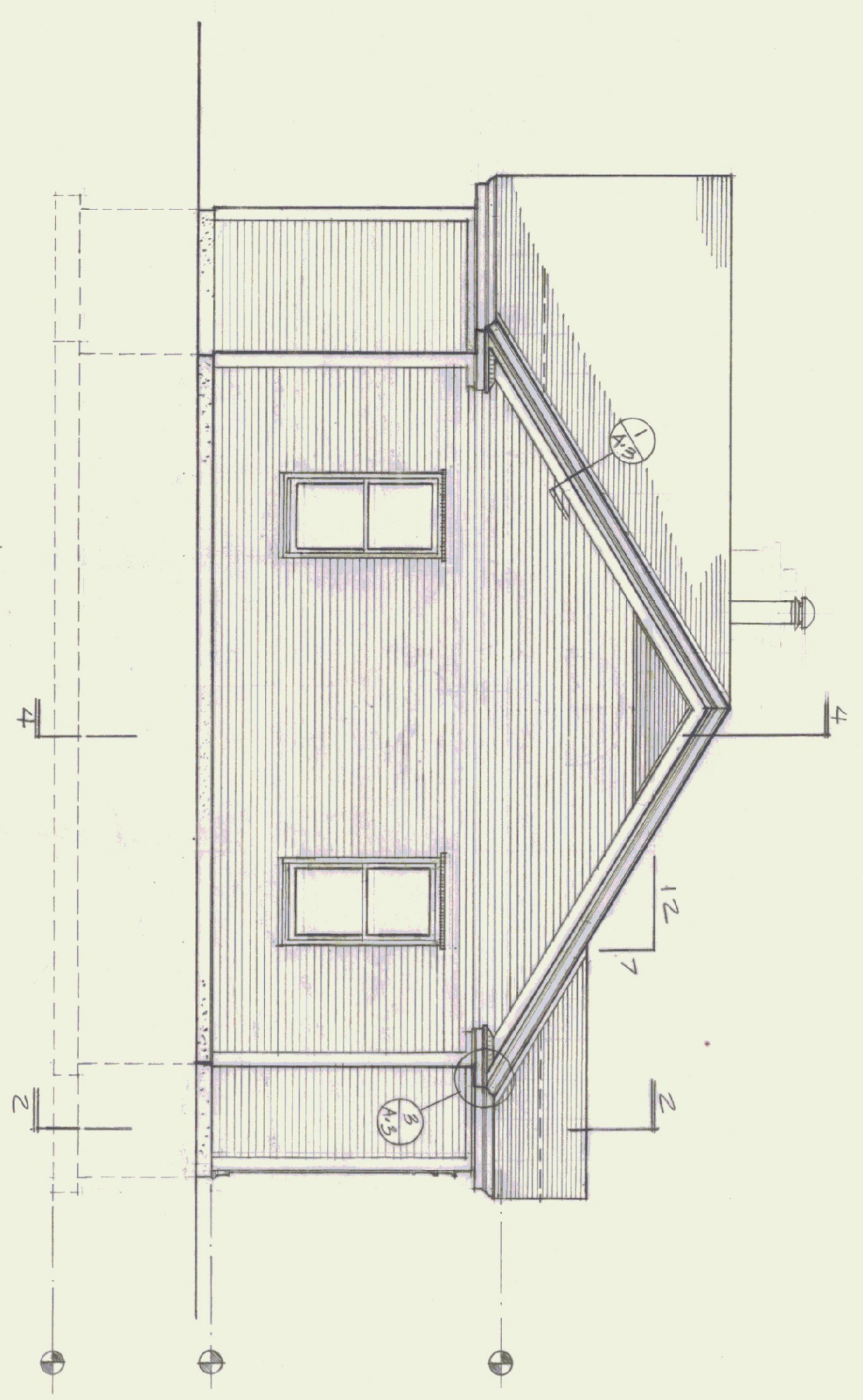


WEST ELEVATION

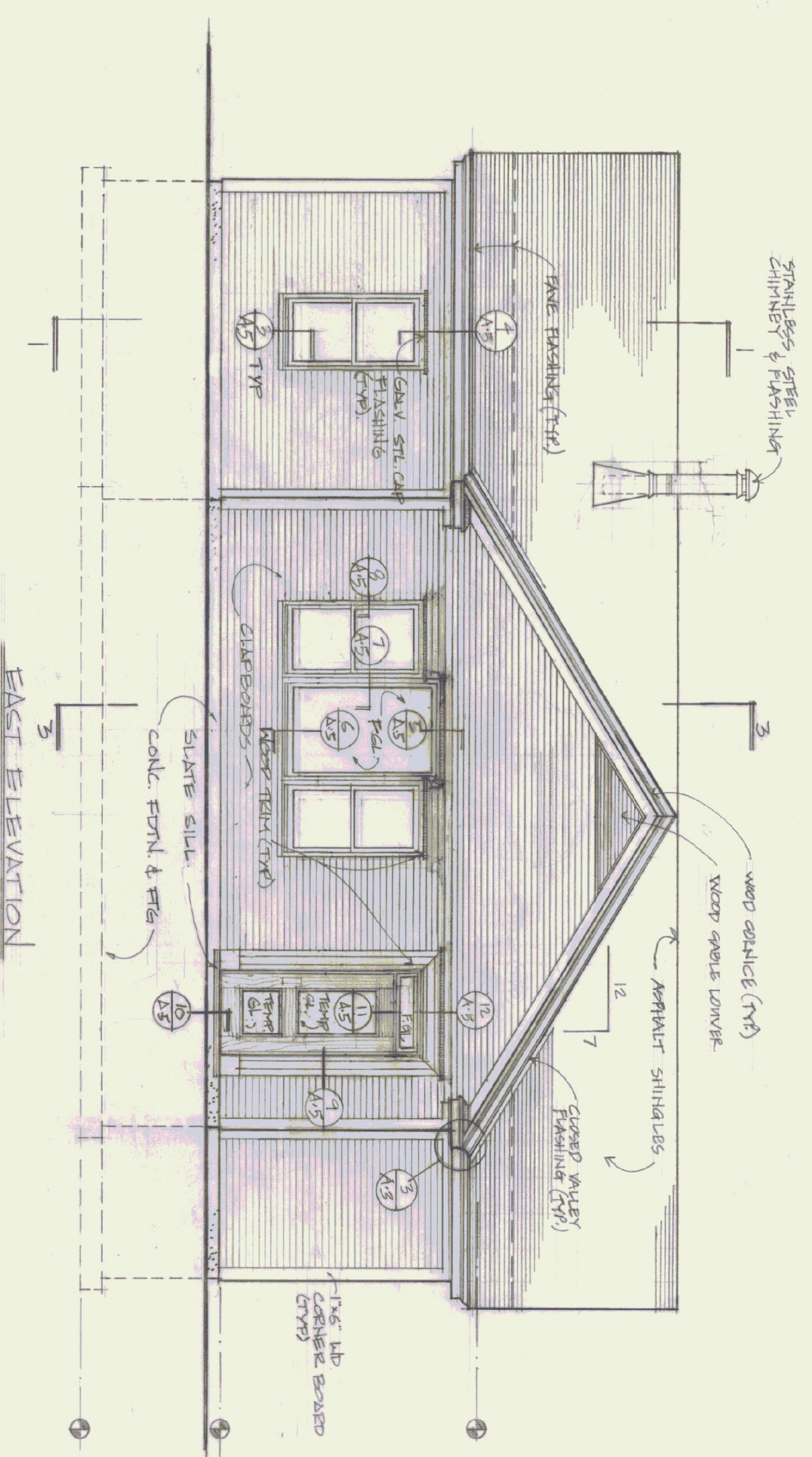
NOTE  
TYP DOUBLE HUNG WINDOW #2825  
CARVED FRIMP WOOD #2825



SOUTH ELEVATION



NORTH ELEVATION



EAST ELEVATION

STATE OF VERMONT  
DIVISION OF STATE BUILDINGS  
AGENCY OF ADMINISTRATION  
VERMONT

ELEVATIONS

NEW TERMINAL BUILDING  
MORRISVILLE/STOLE STATE AIRPORT  
VERMONT

DATE: JULY 8, 1968	SCALE: 1/4" = 1'-0"	REVISIONS:	DWG. NO. A. 2
DRAWN BY: REMICK	APPROVED BY: CWM		4 of 10

