

FLOOR PLAN - DEMOLITION
SCALE: 1/8" = 1'-0"

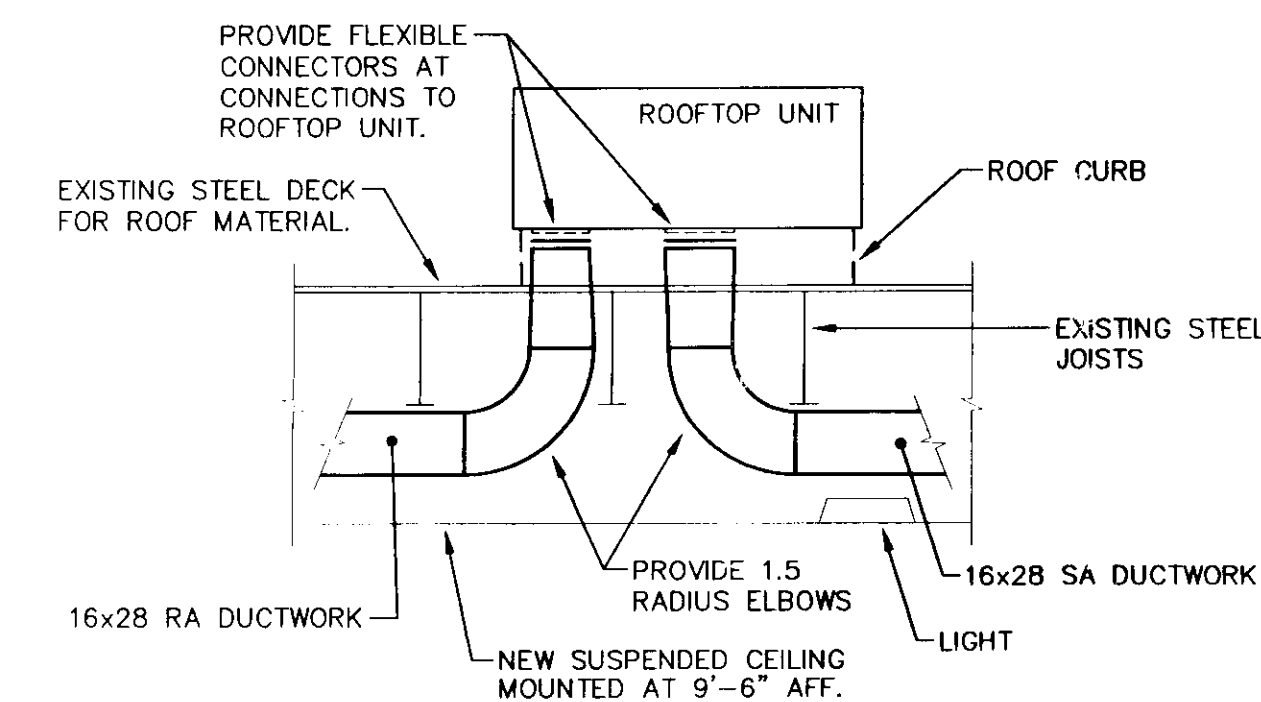
MECHANICAL LEGEND	
—	HOT WATER SUPPLY
- - -	HOT WATER RETURN
↑	AIR VENT
○	BALL VALVE
↗	FLOW CHECK
→	FLOW DIRECTION
○	PIPE UP
○	PIPE DOWN
⊙	PRESSURE GAUGE
⊕	TEMPERATURE/PRESSURE PORT
⊖	UNION
⊘	VOLUME DAMPER
AFF	ABOVE THE FINISH FLOOR
BBR	BASEBOARD RADIATION
MC	MECHANICAL CONTRACTOR
EC	ELECTRICAL CONTRACTOR
GC	GENERAL CONTRACTOR
PC	PLUMBING CONTRACTOR
MAU	MAKE-UP AIR UNIT
SD	SUPPLY DIFFUSER
RR	RETURN REGISTER
ER	EXHAUST REGISTER
RTU	ROOFTOP UNIT

GENERAL NOTES:

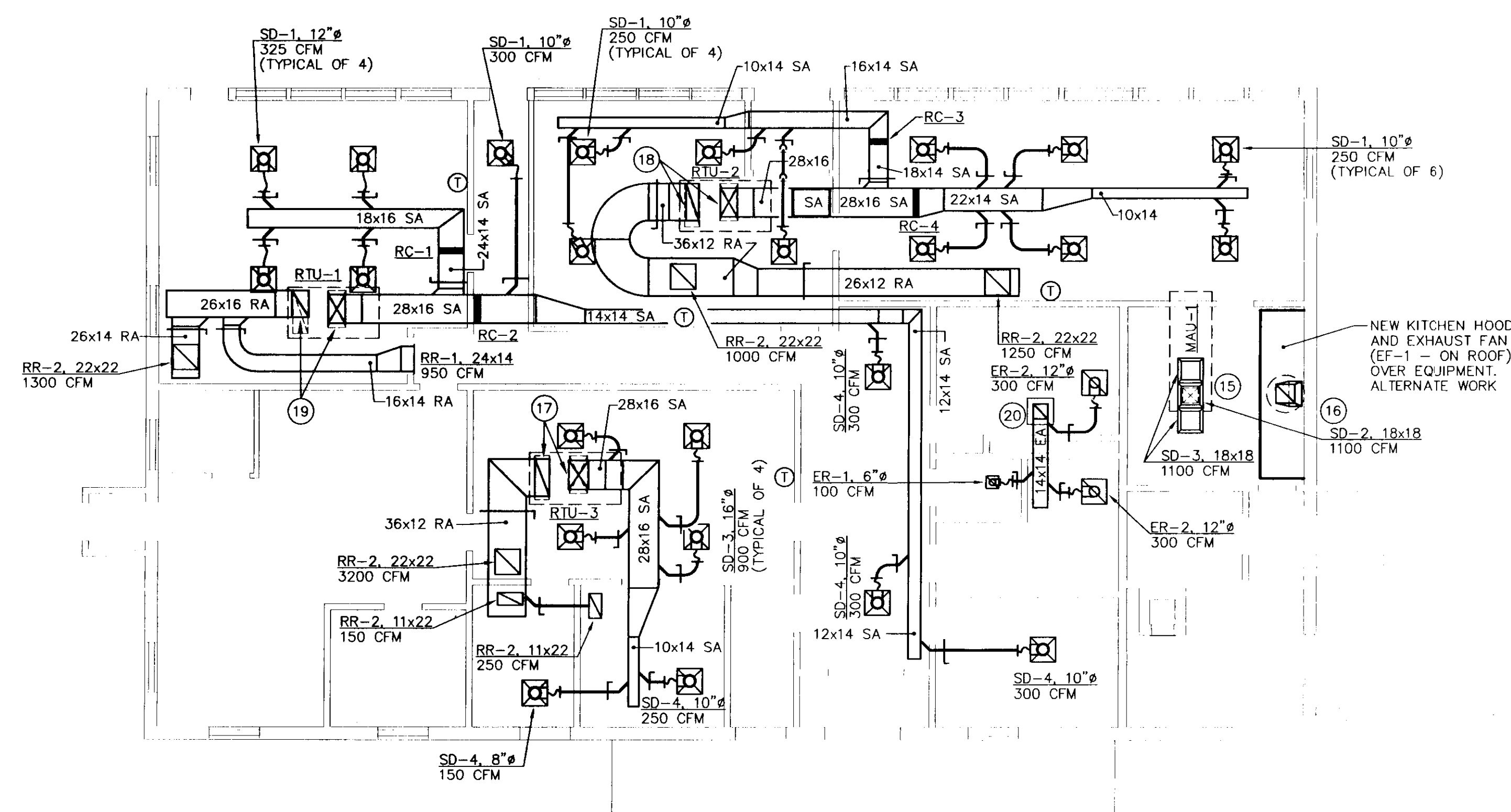
- A. THE EXISTING FACILITY WILL BE OCCUPIED AND FUNCTIONING DURING THE ENTIRE DURATION OF CONSTRUCTION. CARE SHALL BE TAKEN WHEN WORKING IN OR AROUND OCCUPIED SPACES. THERE WILL BE NO INTERRUPTION IN HVAC SYSTEMS OR UTILITIES WITHOUT WRITTEN REQUEST TO, AND APPROVAL FROM THE OWNER. REFER TO DRAWING A-2.
- B. EQUIPMENT AND MATERIALS REMOVED OR DEMOLISHED AND NOT TO BE REINSTALLED BY THE MC SHALL BE CLASSIFIED BY THE OWNER AS SALVAGE OR SCRAP. THOSE CLAIMED BY THE OWNER SHALL BE DELIVERED TO THE OWNER BY THE MC WHERE DIRECTED AT THE SITE. THOSE NOT CLAIMED BY THE OWNER SHALL BECOME PROPERTY OF THE MC AND SHALL BE LEGALLY REMOVED FROM THE SITE AND PREMISES.
- C. REFER TO THE ARCHITECTURAL REFLECTED CEILING PLANS FOR FINAL COORDINATION OF LIGHTS AND DIFFUSERS.
- D. DUCT SIZES TO DIFFUSERS AND REGISTERS TO BE SAME SIZE AS THE NECK OPENINGS OF THE DIFFUSERS AND REGISTERS, UNLESS OTHERWISE NOTED.
- E. MC TO CUT ALL HOLES IN ROOF DECK TO ACCOMMODATE DUCTWORK AND WIRING PENETRATIONS THROUGH ROOF. GC TO PROVIDE ROOF FRAMING SUPPORTS AND DECK REINFORCEMENT.

KEYED NOTES:

- 1 REMOVE EXISTING UNIT VENTILATOR, CONTROLS, WIRING AND ALL ACCESSORIES. REMOVE HWS & HWR PIPING BACK TO 6" BELOW THE FLOOR AND CAP. GC TO PATCH FLOOR. EXISTING PIPE IN FLOOR TO REMAIN AND BE ABANDONED.
- 2 EXISTING OUTSIDE AIR LOUVER THAT SERVED EXISTING UNIT VENTILATOR IS TO REMAIN. COORDINATE WITH GC.
- 3 EXISTING FIN-TUBE RADIATION COMPLETE WITH GRILLES, WOOD ENCLOSURE, METAL ENCLOSURE IS TO REMAIN. REMOVE HWS AND HWR PIPING BACK TO 1" BELOW THE FLOOR AND CAP. GC TO PATCH FLOOR. EXISTING PIPE IN FLOOR TO REMAIN AND BE ABANDONED.
- 4 REMOVE EXISTING 2-1/2" HWS & HWR PIPING FROM TOP ELBOW DOWN TO FLOOR LEVEL. CAP PIPING AT FLOOR LEVEL. CAP PIPING AT FLOOR LEVEL. CUT AND REAM ENDS OF PIPE CLEAN AND READY FOR RECONNECTION TO NEW WORK. EXISTING PIPE IN FLOOR TO REMAIN AND BE ABANDONED.
- 5 REMOVE EXISTING DOMESTIC COLD, HOT AND 3/4" RECIRC. HOT WATER PIPING FROM TOP ELBOW DOWN TO FLOOR LEVEL. CAP PIPING AT FLOOR LEVEL. CUT AND REAM ENDS OF PIPE CLEAN AND READY FOR RECONNECTION TO NEW WORK. PIPE IN FLOOR TO REMAIN AND BE ABANDONED.
- 6 REMOVE EXISTING HWS AND HWR PIPING BACK TO 1" BELOW FLOOR AND CAP. GC TO PATCH FLOOR. EXISTING HEATING DEVICE TO REMAIN. CUT AND REAM ENDS OF PIPE CLEAN AND READY FOR RECONNECTION TO NEW WORK. PIPE IN FLOOR TO REMAIN AND BE ABANDONED.
- 7 REMOVE EXISTING HEATING THERMOSTAT ON WALL.
- 8 EXISTING HWS AND HWR PIPING, PUMP AND ACCESSORIES IN BOILER ROOM TO FEED FIN-TUBE RADIATION IN EXISTING OFFICE IN BUILDING. ALL TO REMAIN. REFER TO DRAWING M-2, FLOOR PLAN-PIPING FOR NEW WORK.
- 9 REMOVE EXISTING THROUGH THE WALL AIR CONDITIONER, CONTROLS, DUCTWORK AND ALL ACCESSORIES. AIR CONDITIONER TO REMAIN PROPERTY OF THE RESTAURANT.
- 10 REMOVE EXISTING EXHAUST FAN ON ROOF. ROOF CURB TO REMAIN. COORDINATE WITH E.C.
- 11 REMOVE EXISTING AIR HANDLING UNIT COMPLETE WITH ALL DUCTWORK, GRILLES, SUPPORTS, CONTROLS, PIPING AND ALL ACCESSORIES.
- 12 REMOVE EXISTING KITCHEN HOOD COMPLETE WITH ALL DUCTWORK, EXHAUST FAN, SUPPORTS, CONTROLS AND ALL ACCESSORIES.
- 13 REMOVE EXISTING KITCHEN MAKE-UP FAN AND LOUVER COMPLETE WITH ALL DUCTWORK, SUPPORTS AND ALL ACCESSORIES.
- 14 REMOVE EXISTING FIN-TUBE RADIATION COMPLETE WITH COVERS, FINES, VALVES, SUPPORTS AND ALL ACCESSORIES. REMOVE HWS AND HWR PIPING BACK TO 6" BELOW FLOOR AND CAP. GC TO PATCH FLOOR. EXISTING PIPE IN FLOOR TO REMAIN AND BE ABANDONED.
- 15 14x14 SUPPLY AIR DUCT UP TO MAKE-UP AIR UNIT (MAU-1) ON ROOF ABOVE.
- 16 NEW EXHAUST HOOD WITH MATCHING EXHAUST FAN (EF-1) ON ROOF ABOVE. DUCTWORK TO BE 12 GAUGE SHEETMETAL. TRANSITION FROM HOOD COLLAR TO 18x18 AND RUN UP TO FAN ON ROOF.
- 17 28x16 SUPPLY AIR DUCT AND 36x16 RETURN AIR DUCT UP TO ROOF TOP UNIT (RTU-3) ON ROOF ABOVE. TRANSITION AS REQUIRED IN ROOF CURB. PROVIDE FLEXIBLE CONNECTORS AT DUCT CONNECTIONS TO UNIT.
- 18 28x16 SUPPLY AIR DUCT AND 36x12 RETURN AIR DUCT UP TO ROOF TOP UNIT (RTU-2) ON ROOF ABOVE. TRANSITION AS REQUIRED IN ROOF CURB. PROVIDE FLEXIBLE CONNECTORS AT DUCT CONNECTIONS TO UNIT.
- 19 28x16 SUPPLY AIR DUCT AND 26x16 RETURN AIR DUCT UP TO ROOF TOP UNIT (RTU-1) ON ROOF ABOVE. TRANSITION AS REQUIRED IN ROOF CURB. PROVIDE FLEXIBLE CONNECTORS AT DUCT CONNECTIONS TO UNIT.
- 20 14x14 EXHAUST AIR DUCT UP TO EXHAUST FAN (EF-2) ON ROOF ABOVE. TRANSITION AS REQUIRED IN ROOF CURB.



ROOFTOP UNIT DETAIL
SCALE: 1/4" = 1'-0"



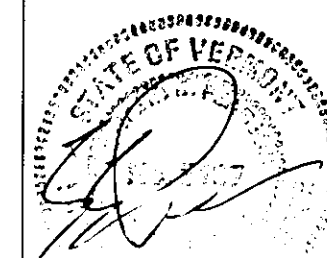
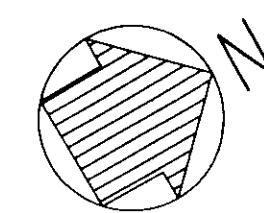
FLOOR PLAN - DUCTWORK AND EQUIPMENT
SCALE: 1/8" = 1'-0"

STATE OF VERMONT
DEPARTMENT OF BUILDINGS and GENERAL SERVICES
AGENCY OF ADMINISTRATION
MONTPELIER, VERMONT

E. F. KNAPP AIRPORT TERMINAL
BERLIN, VERMONT

MECHANICAL RENOVATIONS

DATE: 7/21/2000	SCALE: AS SHOWN	REVISIONS:	CAD FILE: KNAPPH1	DWG NO. M-1
DRAWN BY: TJY	APPROVED BY: E.E.P.		SHEET: 3 OF 8	



Pearson & Associates
MECHANICAL & ELECTRICAL ENGINEERS
P.O. BOX 610; STOWE, VERMONT 05672
TEL.(802) 253-9607 FAX.(802) 253-9290
EMAIL: pearson@stowevt.net