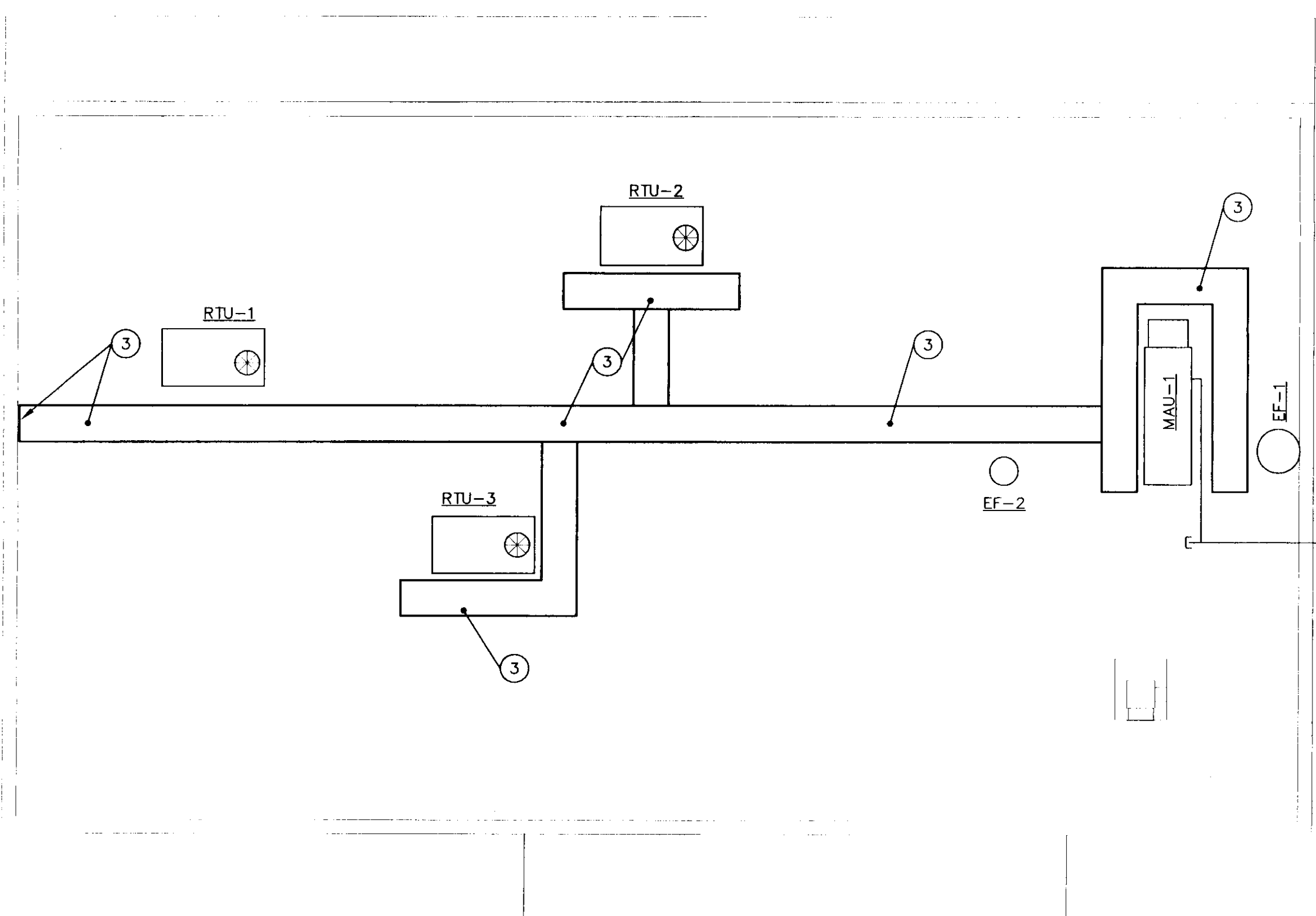
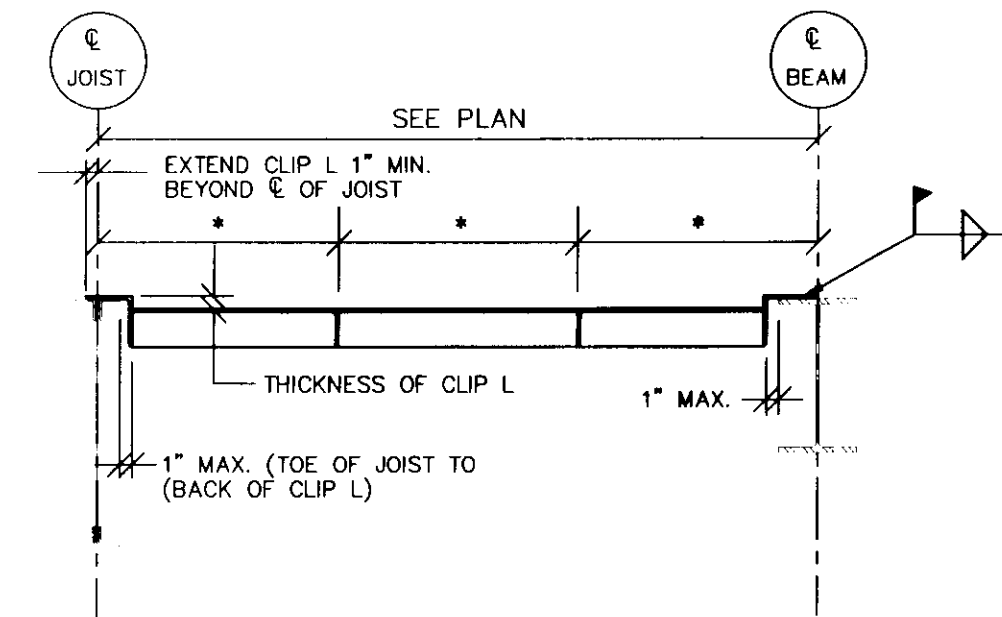


**STRUCTURAL STEEL REINFORCEMENT PLAN**  
SCALE: 1/8" = 1'-0"



**ROOF PLAN**  
SCALE: 1/8" = 1'-0"



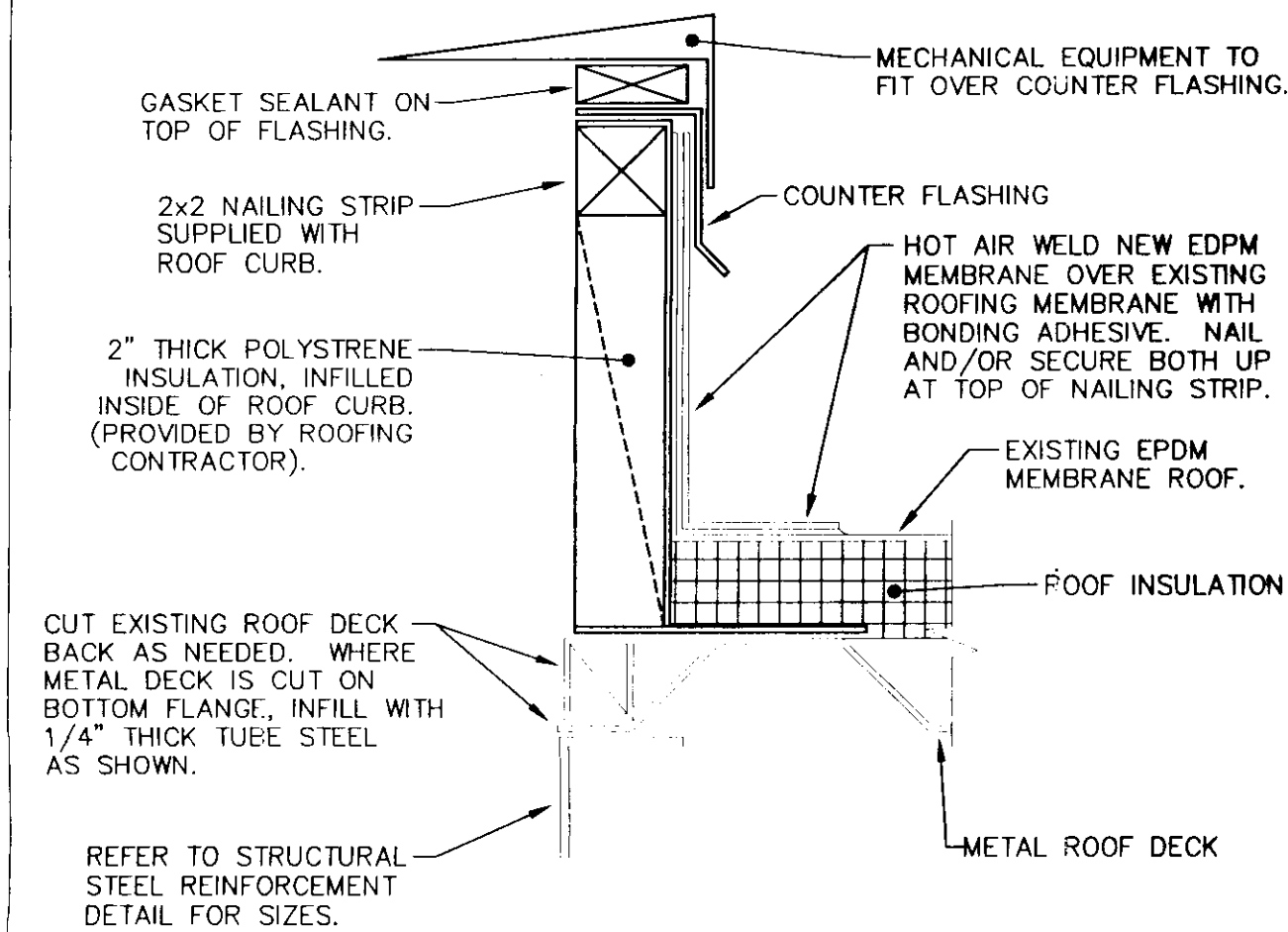
**REINFORCEMENT SCHEDULE**

HOLE DIAMETER	REINFORCEMENT REQUIRED
< 6"	NO REINFORCEMENT REQUIRED
6" TO 8"	18 GAGE PLATE
8" TO 13"	16 GAGE PLATE
> 13"	3 1/2" x 3 1/2" x 1/2" ANGLE FRAME U.O.N.
SPECIAL	SEE PLAN FOR FRAME SIZES

\* GENERAL CONTRACTOR TO COORDINATE ALL DIMENSIONS WITH MECHANICAL AND PLUMBING CONTRACTOR BEFORE FABRICATION.

**TYPICAL ROOF PENETRATION STEEL REINFORCEMENT DETAIL**

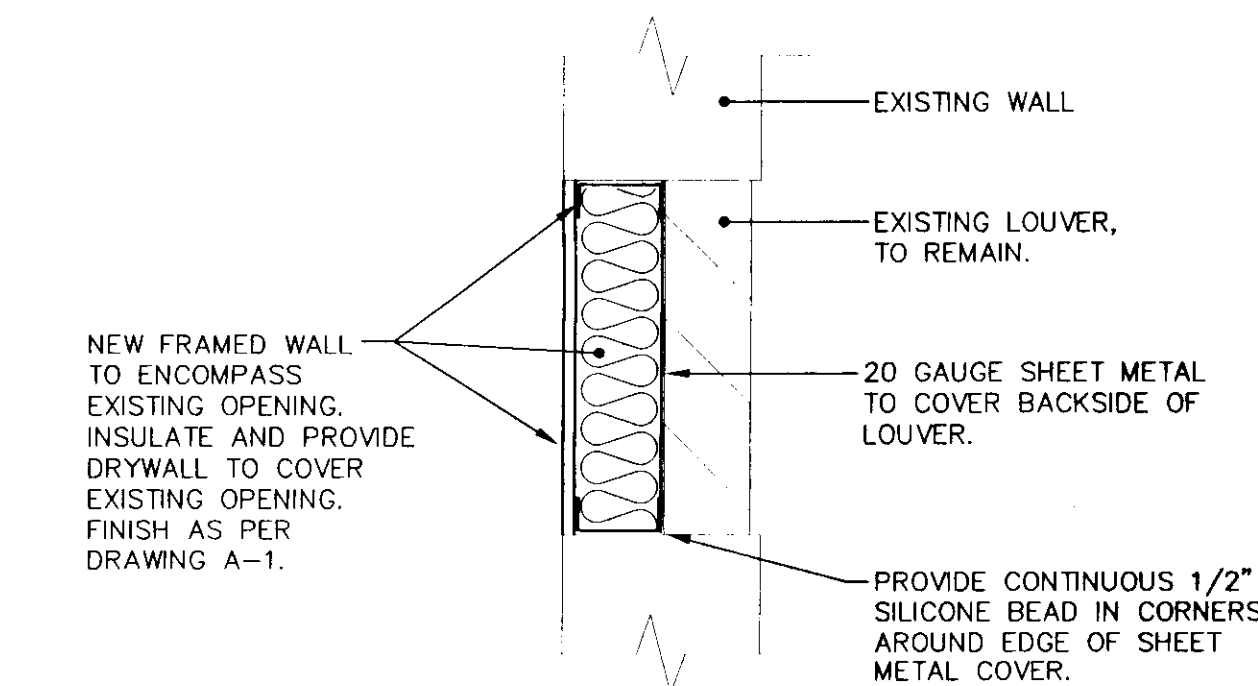
1  
A2  
NO SCALE



CONTACT: PALMIERI ROOFING IN ST. JOHNSBURY (748-9628) FOR ALL ROOFING RELATED WORK. PALMIERI HOLDS THE WARRANTEE ON ROOF.

**TYPICAL ROOF CURB DETAIL**

2  
A2  
NO SCALE



**WALL SLEEVE CONSTRUCTION DETAIL**

3  
A2  
NO SCALE

**GENERAL NOTES:**

- REINFORCEMENTS FOR DUCT PENETRATIONS WILL BE CONSTRUCTED OF ASTM A36 STRUCTURAL STEEL ANGLE BY CERTIFIED WELDERS. REINFORCEMENT ANGLES SHALL BE IN DIRECT CONTACT WITH ROOF DECK, SHIM AS REQUIRED FOR TIGHT FIT.
- MC MAY SUBMIT ON DIFFERENT AND APPROVED ROOFTOP UNITS. MC THEN IS TO TAKE THE RESPONSIBILITY TO MODIFY THE STEEL REINFORCEMENT PER THE NEW UNITS. MC/GC IS TO SUBMIT NEW STEEL REINFORCEMENT PLAN TO THE ENGINEER FOR REVIEW AND APPROVAL.
- COORDINATE FINAL PLACEMENT OF STEEL REINFORCEMENTS WITH THE ROOF CURBS OF THE UNITS.
- ALL DETAILS ARE EXAMPLES ONLY. ACTUAL INSTALLATIONS WILL BE DONE IN ACCORDANCE WITH ALL MANUFACTURER'S RECOMMENDATIONS AND INSTALLATION INSTRUCTIONS.

**KEYED NOTES:**

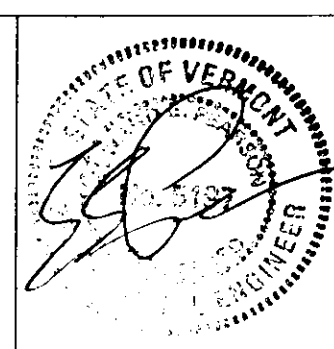
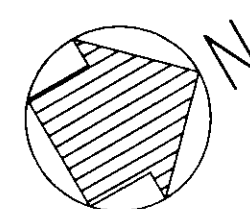
- 4x4x1/4 DECK REINFORCEMENT ANGLES CENTERED UNDER EQUIPMENT CURB. SEE TYPICAL ROOF PENETRATION REINFORCEMENT DETAIL.
- EXISTING STEEL ANGLE IRON FOR ROOF PENETRATION TO REMAIN. MODIFY ROOF CURB TO ACCOMMODATE NEW EXHAUST FAN.
- PROVIDE 30x30x1" THICK RUBBER PADS FOR WALKWAY TO THE MECHANICAL ROOFTOP UNITS. COORDINATE WITH MC FOR FINAL LOCATIONS. RUBBER PADS BY FIRESTONE. HOT WELD RUBBER PADS TO EXISTING EPDM MEMBRANE ROOFING. PALMIERI ROOFING TO PERFORM THIS WORK. RUN WALKWAY TO MEET LADDER AT SIDE OF BUILDING. PROVIDE A 2" SPACE INBETWEEN RUBBER PADS FOR DRAINAGE.

STATE OF VERMONT  
DEPARTMENT OF BUILDINGS and GENERAL SERVICES  
AGENCY OF ADMINISTRATION  
MONTPELIER, VERMONT

E. F. KNAPP AIRPORT TERMINAL  
BERLIN, VERMONT

ARCHITECTURAL/STRUCTURAL RENOVATIONS

DATE: 7/21/2000	SCALE: AS SHOWN	REVISIONS:	CAD FILE: KNAPPA2	DWG NO. A-2
DRAWN BY:	APPROVED BY: E.E.P.		SHEET: 2 OF 8	



**Pearson & Associates**  
MECHANICAL & ELECTRICAL ENGINEERS  
P.O. BOX 610; STOWE, VERMONT 05672  
TEL.(802) 253-9607 FAX.(802) 253-9290  
EMAIL: pearson@stowevt.net