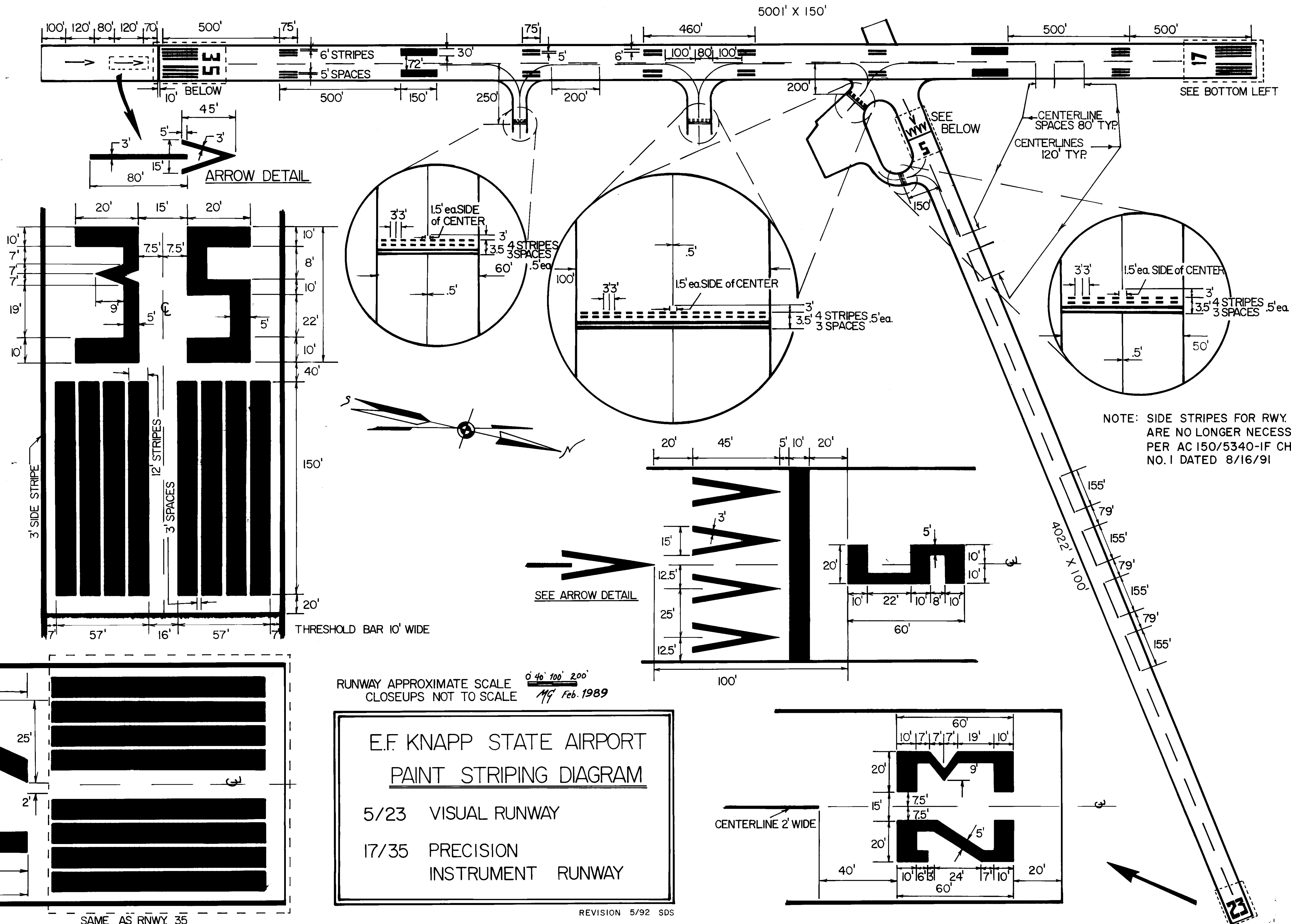


PAINT QUANTITIES				
LOCATION	SQUARE FEET		No. OF GALLONS	
	17/35	5/23	WHITE	YELLOW
CENTERLINE STRIPE	7080	4120	112	—
THRESHOLD MARKINGS	28800	—	288	—
NUMERALS	2192	2028	42	—
SIDE STRIPE	30006	—	300 <sup>▲</sup>	—
FIXED DISTANCE MARKING	18250	—	183	—
HOODING POSITION MARKING	392	74	—	4 <sup>●</sup>
TOUCHDOWN ZONE MARKING	12600	—	126	—
DISPLACED THRESHOLD MARKING	2356	2530	49 <sup>▲</sup>	—

- ▲ ALL MARKINGS IN DISPLACED THRESHOLD AREAS ARE WHITE.
- ALL MARKINGS FOR TAXIWAYS ARE YELLOW.



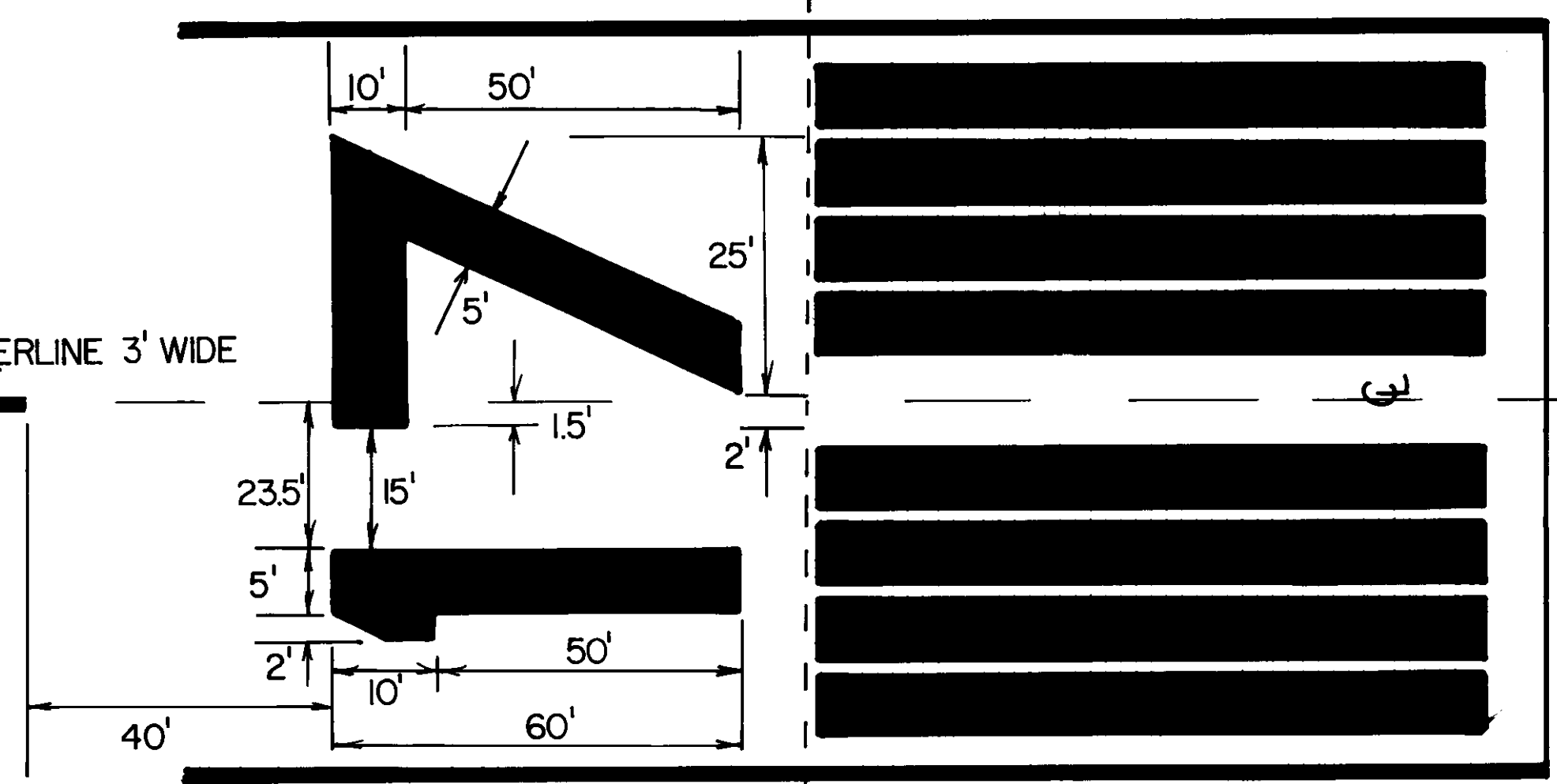
NOTE: SIDE STRIPES FOR RWY. 5/23 ARE NO LONGER NECESSARY PER AC 150/5340-IF CHANGE NO. 1 DATED 8/16/91

RUNWAY APPROXIMATE SCALE  $\frac{0' 40' 100' 200' }{1''}$   
CLOSEUPS NOT TO SCALE *1/9 Feb. 1989*

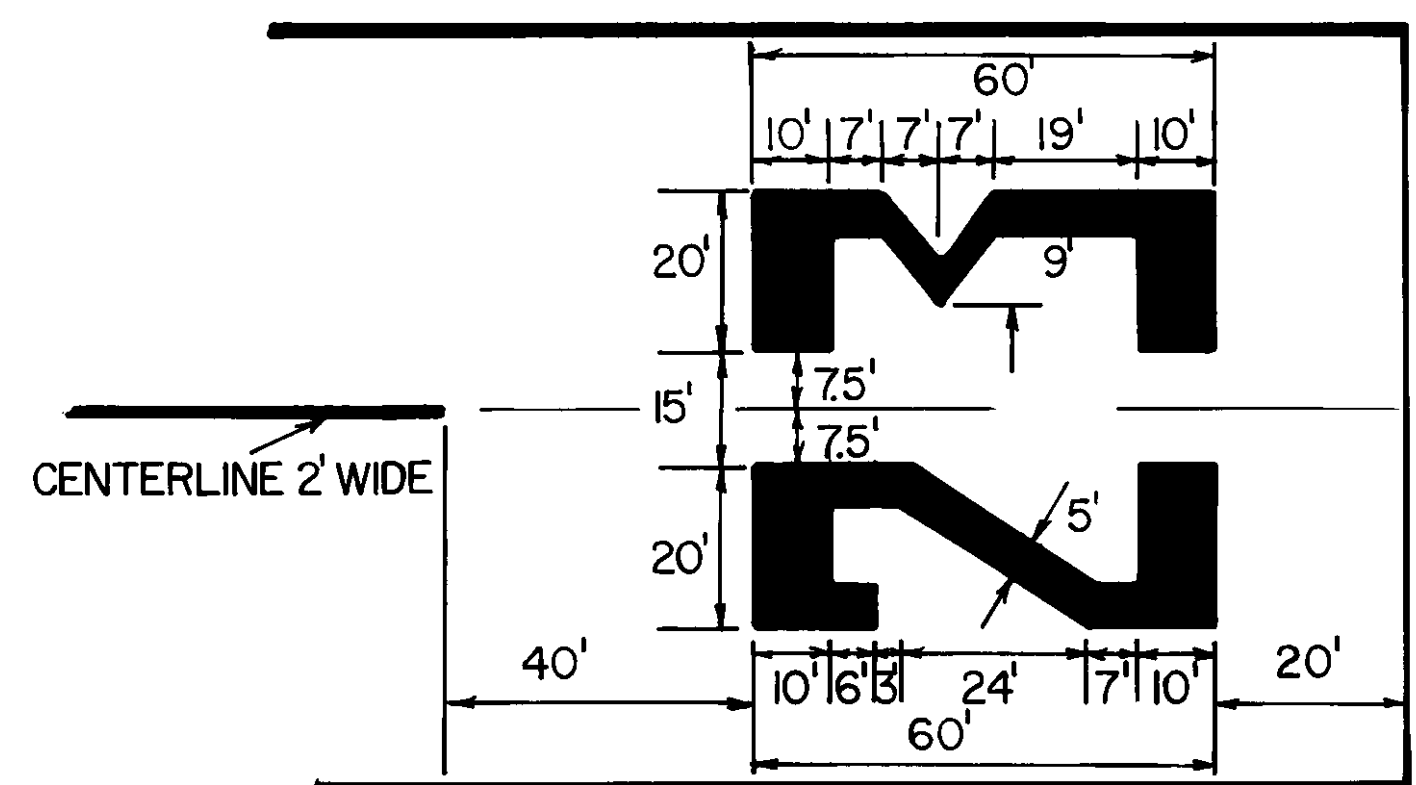
**E.F. KNAPP STATE AIRPORT**  
**PAINT STRIPING DIAGRAM**

5/23 VISUAL RUNWAY  
17/35 PRECISION INSTRUMENT RUNWAY

REVISION 5/92 SDS



SAME AS RWY. 35



CENTERLINE 2' WIDE