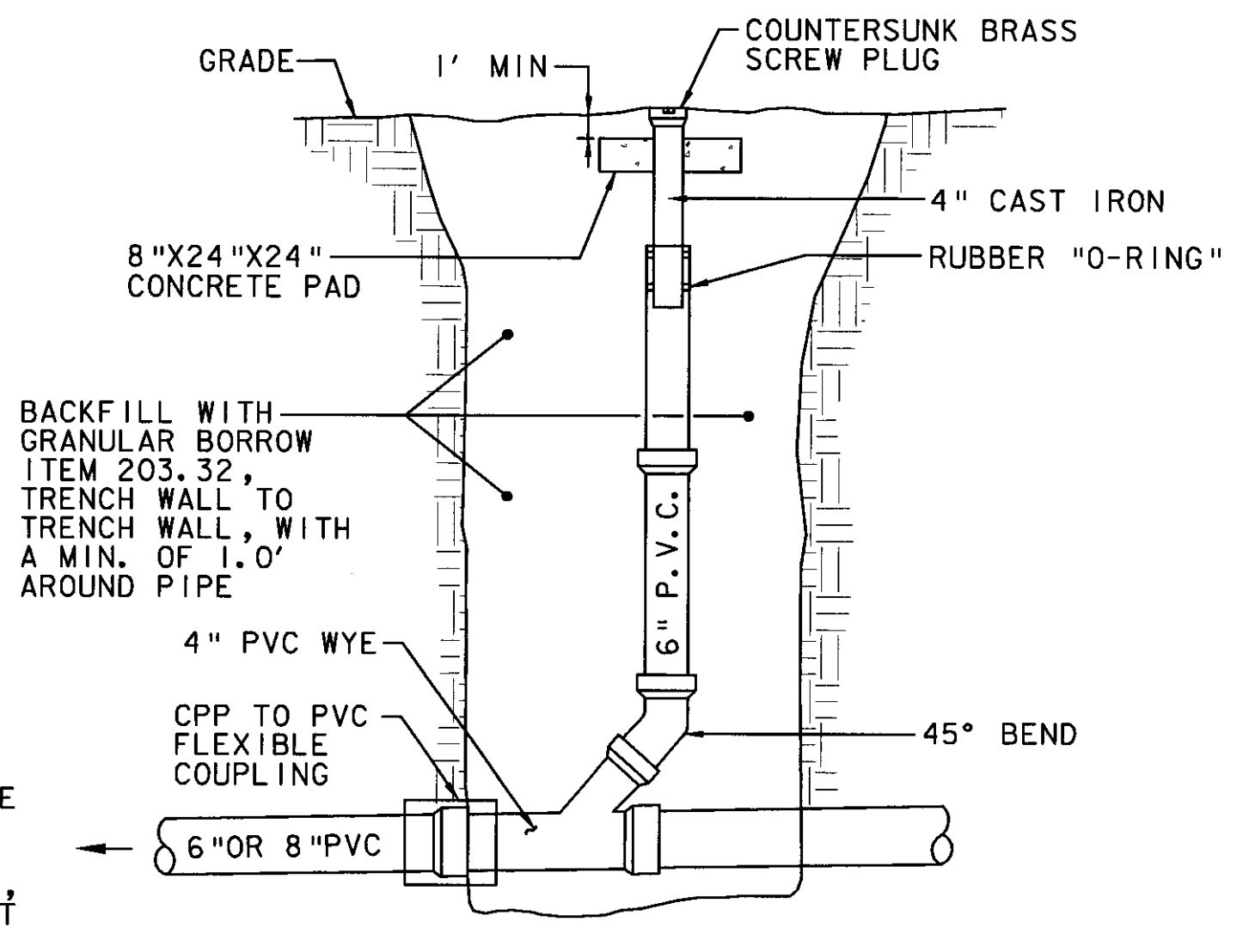
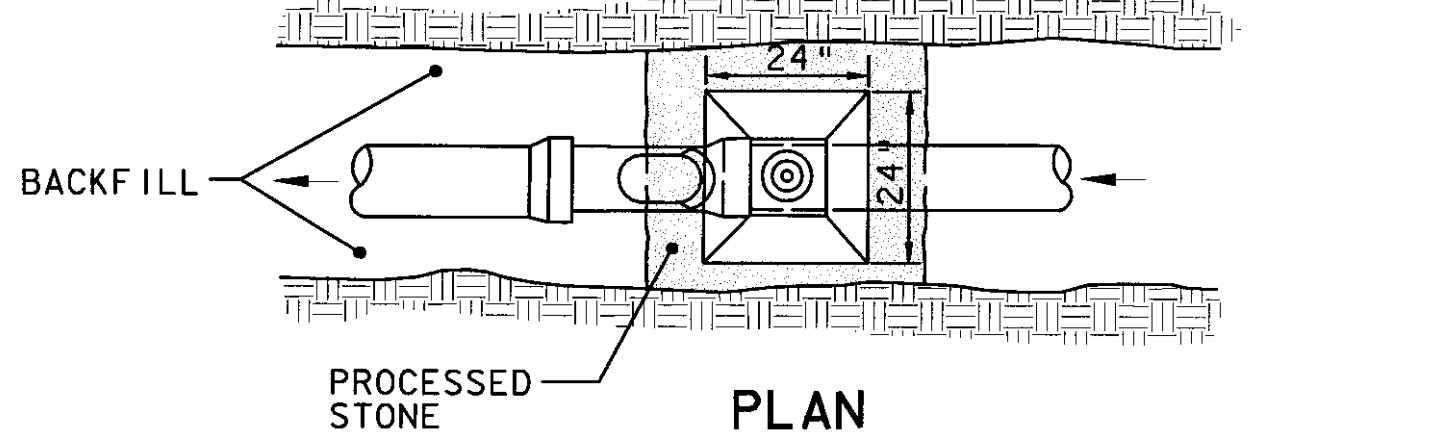
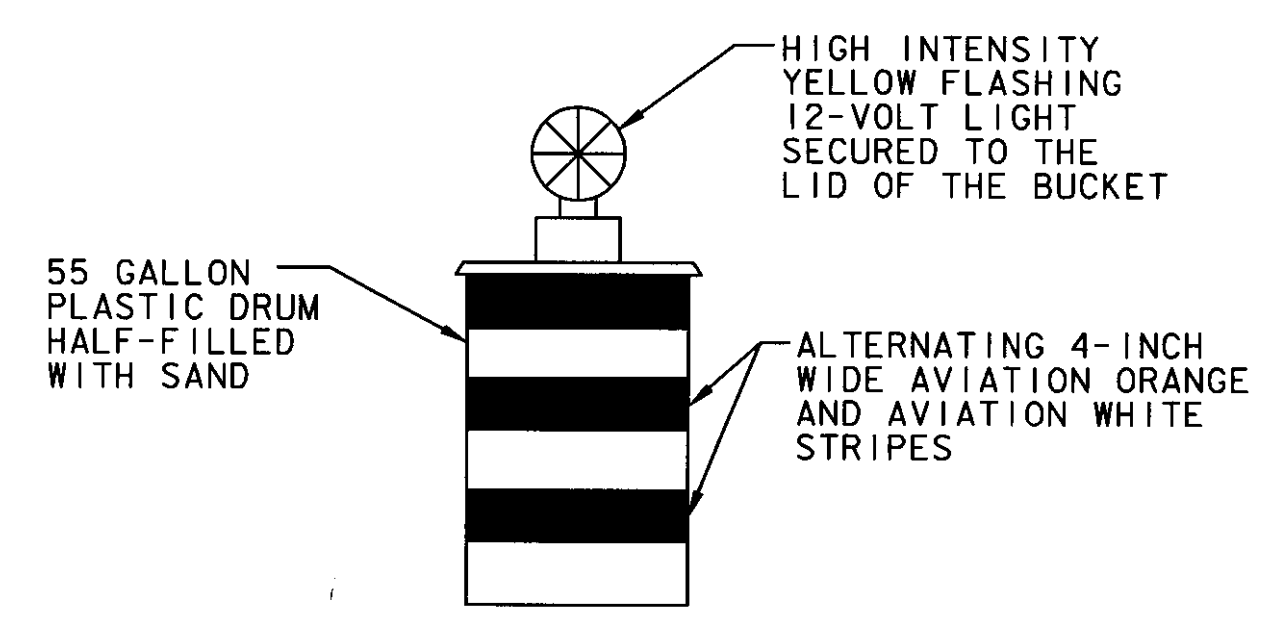
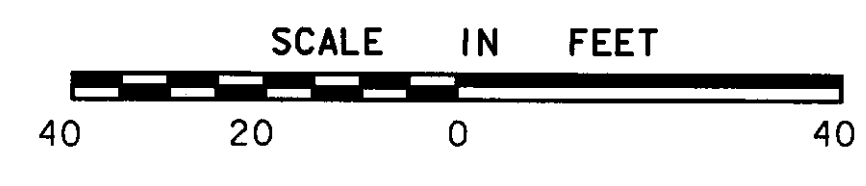


(A) WASTE LEACHFIELD MATERIAL DISPOSAL
SCALE: N. T. S.



(B) SEWERLINE CLEAN OUT
SCALE: N. T. S.

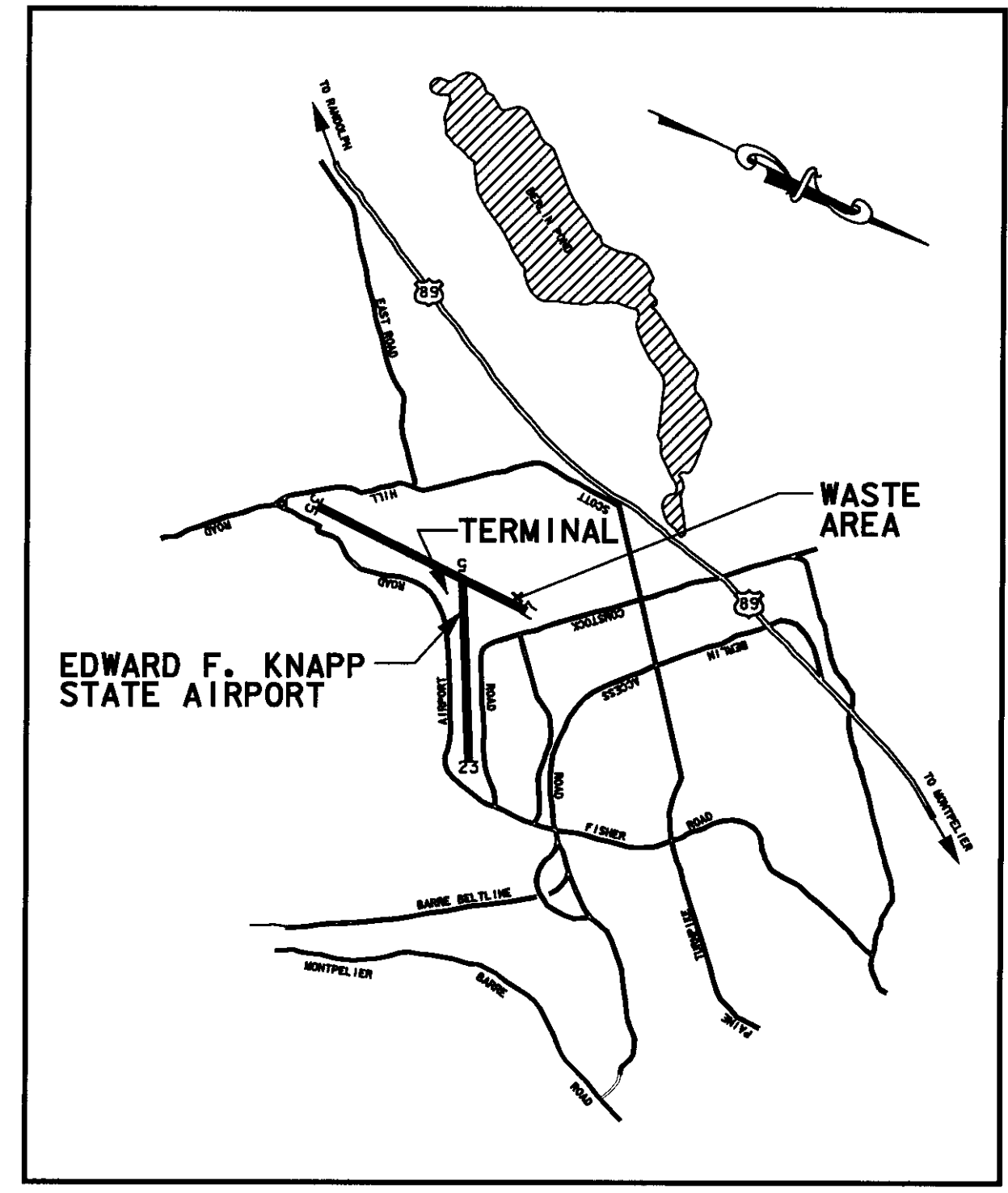


TO BE PLACED WHERE DIRECTED BY THE ENGINEER.
NOT A SEPARATE PAY ITEM.

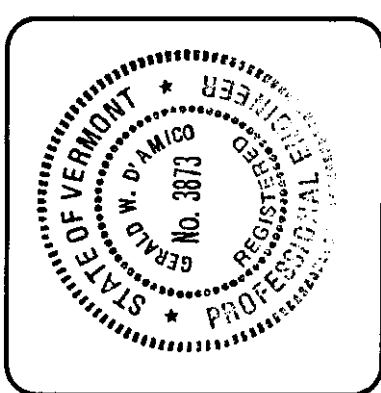
BUCKET-TYPE CONSTRUCTION BARRICADE
SCALE: N. T. S.

GENERAL NOTES

1. ALL WORK TO BE COORDINATED WITH AIRPORT MANAGER (VT. FLYING SERVICE) TO AVOID CONFLICTS WITH HANGAR AND TAXIWAY ACCESS.
2. NO OPEN TRENCHES ALLOWED OVERNIGHT. CONTRACTOR TO PLACE BARRICADES AND FLASHING WARNING LIGHTS WHERE DESIGNATED BY THE ENGINEER.
3. NO MATERIALS ARE TO BE STOCK PILED WHERE PROP WASH WILL BLOW DEBRIS, WASTE OR LOOSE MATERIAL (INCLUDING DUST AND DIRT) CAPABLE OF CAUSING DAMAGE TO AIRCRAFT LANDING GEAR, PROPELLERS, OR BEING INGESTED INTO JET ENGINES SHALL BE ALLOWED ON ACTIVE AIRCRAFT AREAS. SUCH MATERIALS SHALL BE REMOVED IMMEDIATELY BY THE CONTRACTOR. ALL PAVED AREAS SHALL BE SWEEPED TO REMOVE DUST, DIRT, ETC. AS DIRECTED BY THE ENGINEER.
4. ALL CONTRACTOR VEHICLES ENTERING/EXITING THE SITE SHALL DO SO UNDER THE DIRECT CONTROL OF A COMPETENT FLAGGER. AIRCRAFT TRAFFIC ALWAYS HAVE PRIORITY. ALL CONTRACTOR VEHICLES TO HAVE AMBER FLASHING LIGHTS.
5. EROSION CONTROL MEASURES, INCLUDING SILT FENCE AND HAY BALES TO BE PLACED WHERE DIRECTED BY THE ENGINEER.
6. NEW 4" DIA. SEWERLINE CONNECTION FROM CAP BUILDING TO NEW 6" CLEANOUT @ STATION 10+75 BY OTHERS.
7. CONNECT EXISTING 4" DIA. BUILDING SEWER FROM MOLLEUR HANGAR TO NEW MANHOLE, EXISTING 4" DIA. SEWER PIPE TO EXISTING SEPTIC TANK TO BE ABANDONED (PLUG END).
8. PROPOSED EDGE OF PAVEMENT REFERS TO FUTURE APRON/TAXIWAY CONSTRUCTION.
9. EXISTING LEACHFIELD MATERIAL (LEACHFIELD STONE) TO BE DISPOSED OF IN WASTE AREA NO. 1 AS SHOWN ON SHEET 4 OF 93 (AIP3-50-0001-06), AIRPORT IMPROVEMENTS. LEACHFIELD STONE AND WASTE MATERIAL TO BE PLACED OUTSIDE WETLAND BUFFER AREAS (50' OUTSIDE WETLAND LIMITS), AS DIRECTED BY THE ENGINEER. EXCAVATION AND DISPOSAL OF EXISTING LEACHFIELD WASTE MATERIAL, PUMPING AND DISPOSAL OF EXISTING SEPTIC TANK AND CONNECTING EXISTING SEWERLINE FROM MOLLEUR HANGAR TO NEW MANHOLE TO BE PAID FOR UNDER ITEM 628.42 TRANSFER TO NEW SYSTEM - SANITARY SEWER.
10. ALL NEW SEWERLINES WILL BE PRESSURE TESTED BY THE CONTRACTOR. ALL NEW MANHOLES AND SEWERLINES WILL BE SUBJECT TO LEAKAGE TESTING BY THE CONTRACTOR, TESTING SHALL CONFORM TO VT. ANR/ENVIRONMENTAL PROTECTION RULES AND VAOT SPECIFICATIONS SECTION 628.
11. CONTACT BERLIN SEWER COMMISSION FOR INSPECTION OF SEWERLINE PRIOR TO BACKFILLING. (SCOTT BRIMBLE COMB @ 229-0320).
12. WELLHEAD PROTECTION AREA IS SHOWN ON SHEET 4/4.



VICINITY MAP
SCALE: N. T. S.



REV.	DATE	DESCRIPTION	FILE NO.
			SEWER-LDGN

EDWARD F. KNAPP STATE AIRPORT
BERLIN, VERMONT

SEWERLINE - EXTENSION PLAN

Job No. F200001718.01

URS

ONE NORTHWAY LANE
LATHAM, NEW YORK

Designed by: GWD
 Drawn by: MMH
 Checked by: PS
 Approved by: GWD

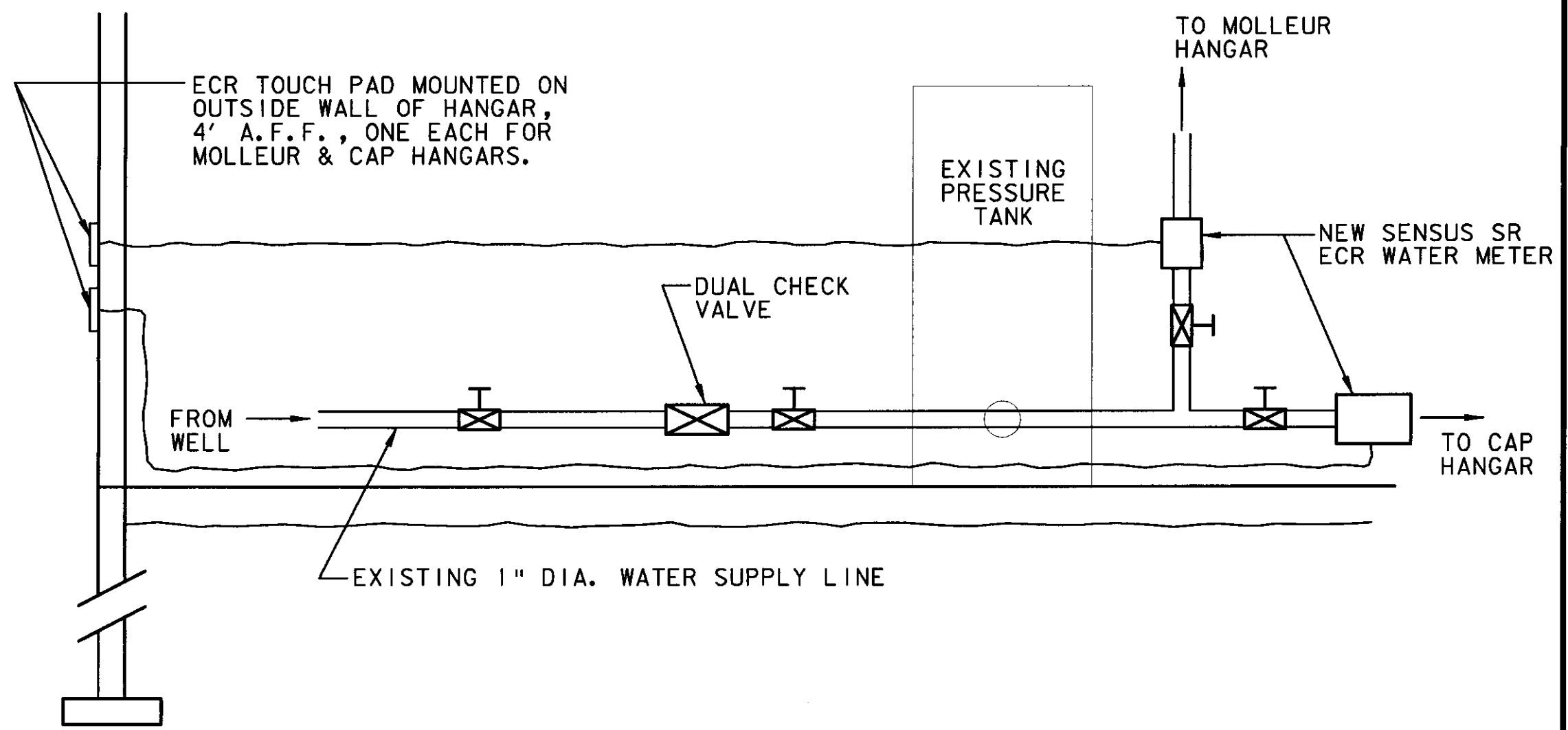
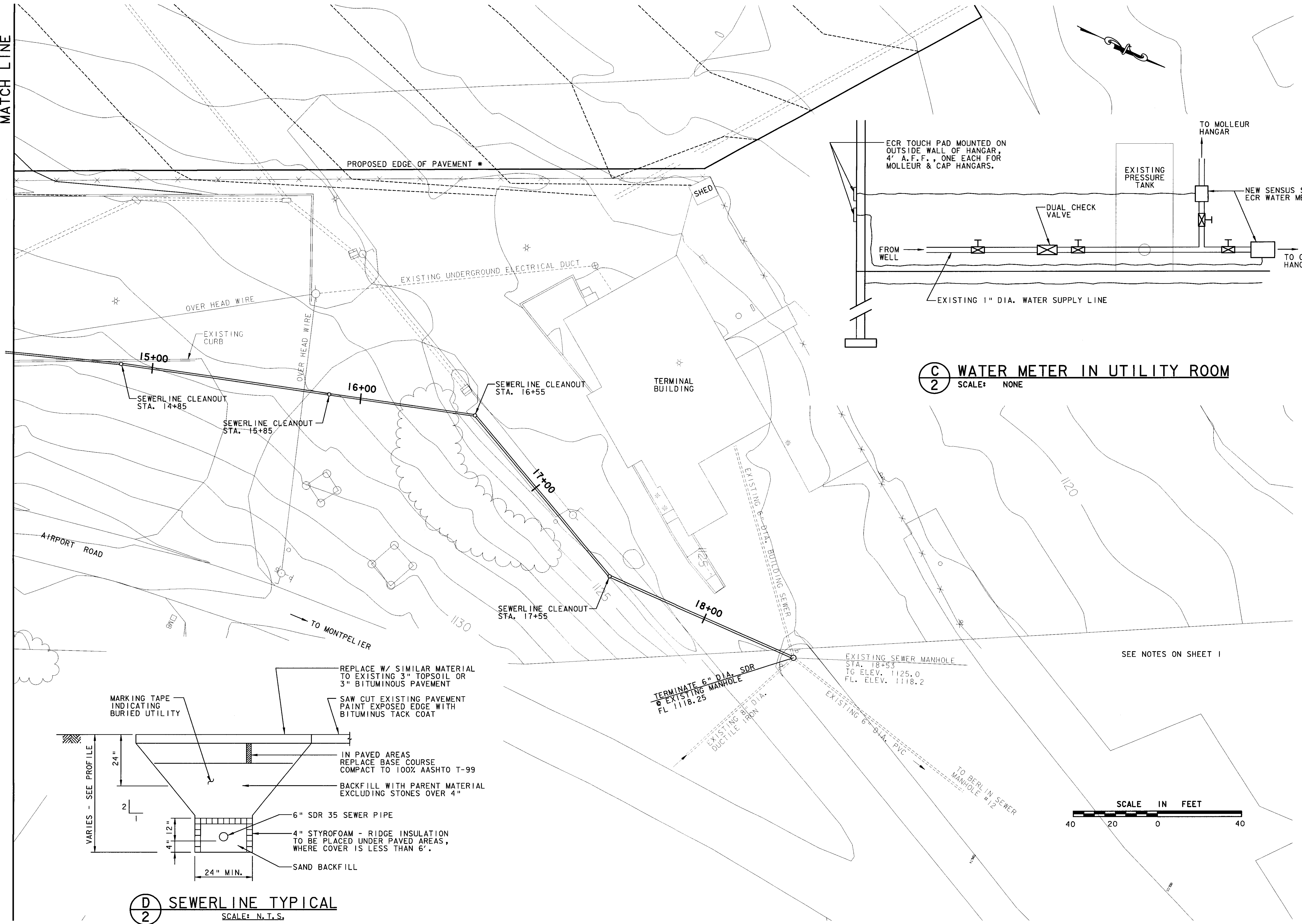
Scale: 1" = 20'

Date: 3/21/01

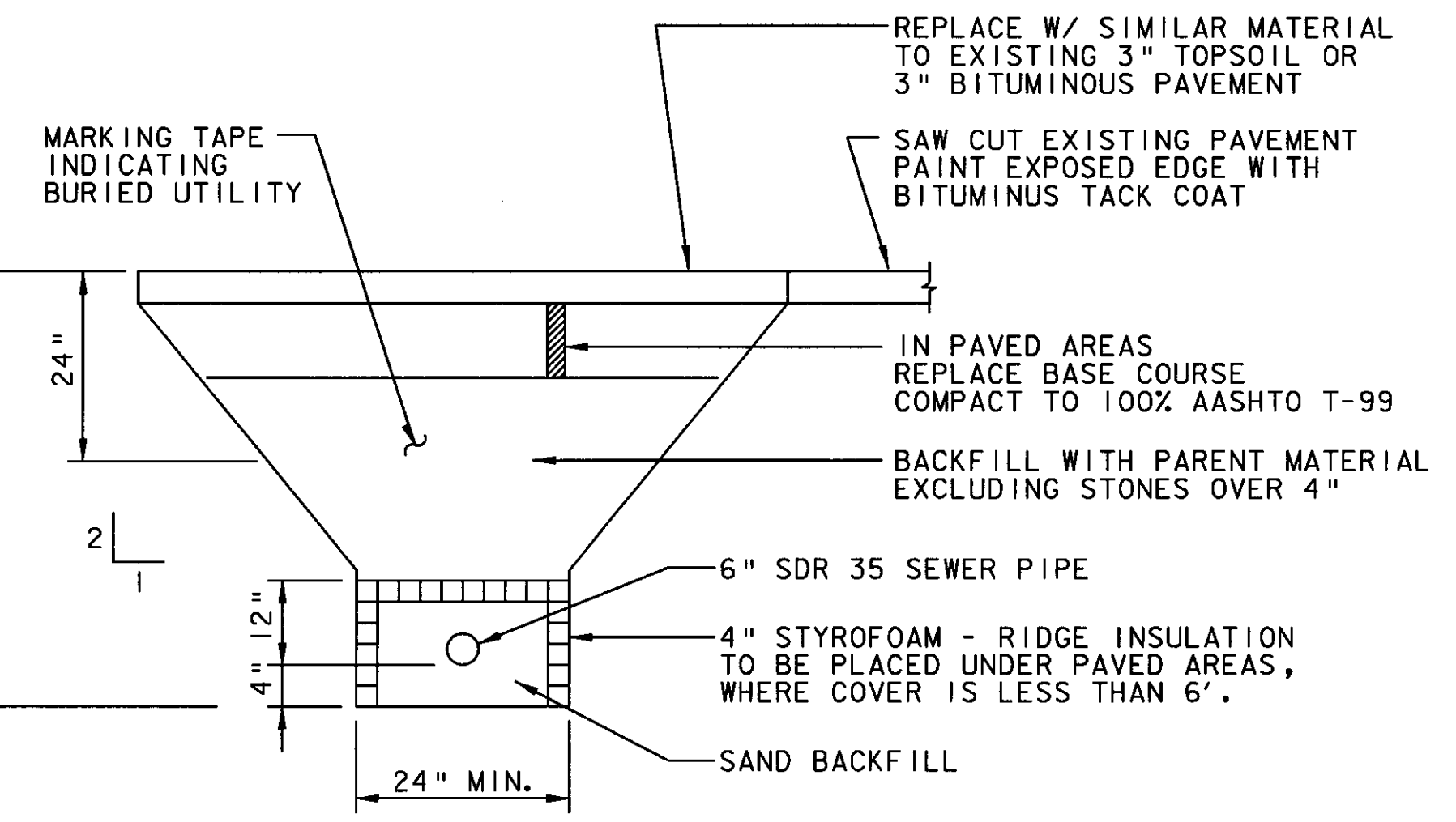
Sheet - of -

Sheet No
1

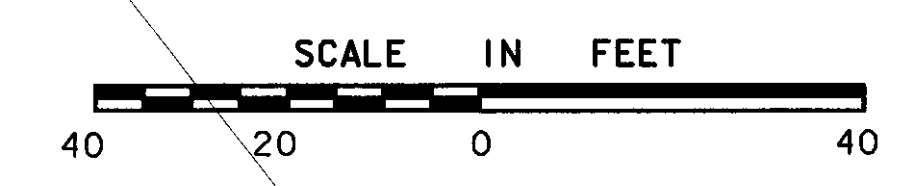
MATCH LINE



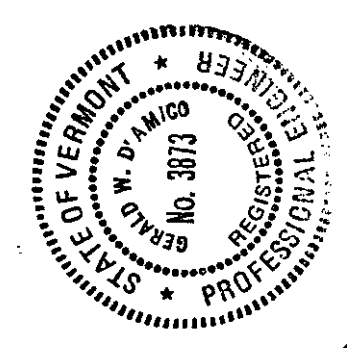
(C) WATER METER IN UTILITY ROOM
 2 SCALE: NONE



(D) SEWERLINE TYPICAL
 2 SCALE: N.T.S.



SEE NOTES ON SHEET 1



REV.	DATE	DESCRIPTION

Job No. F200001718-01
 File No. SEWER-2/DGN

EDWARD F. KNAPP STATE AIRPORT
 BERLIN, VERMONT

SEWERLINE - EXTENSION PLAN

URS
 ONE NORTHWAY LANE
 LATHAM, NEW YORK

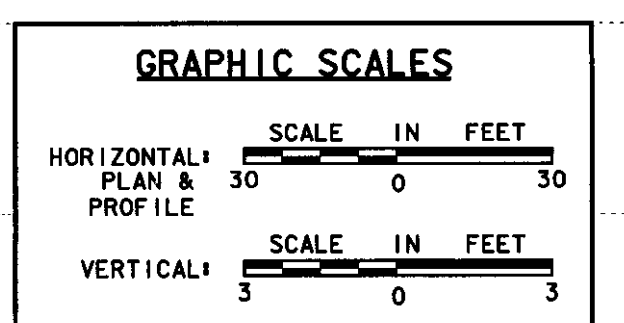
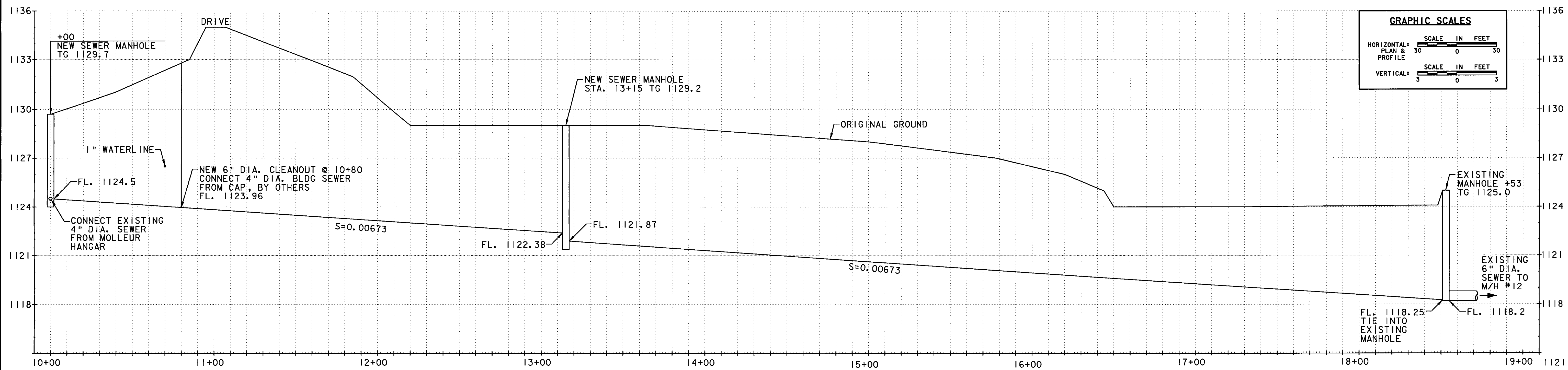
Designed by: GWD
 Drawn by: MMH
 Checked by: PS
 Approved by: GWD

Scale: 1" = 20'

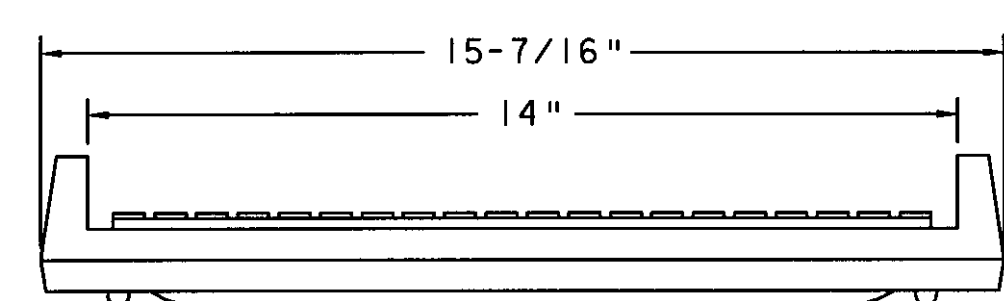
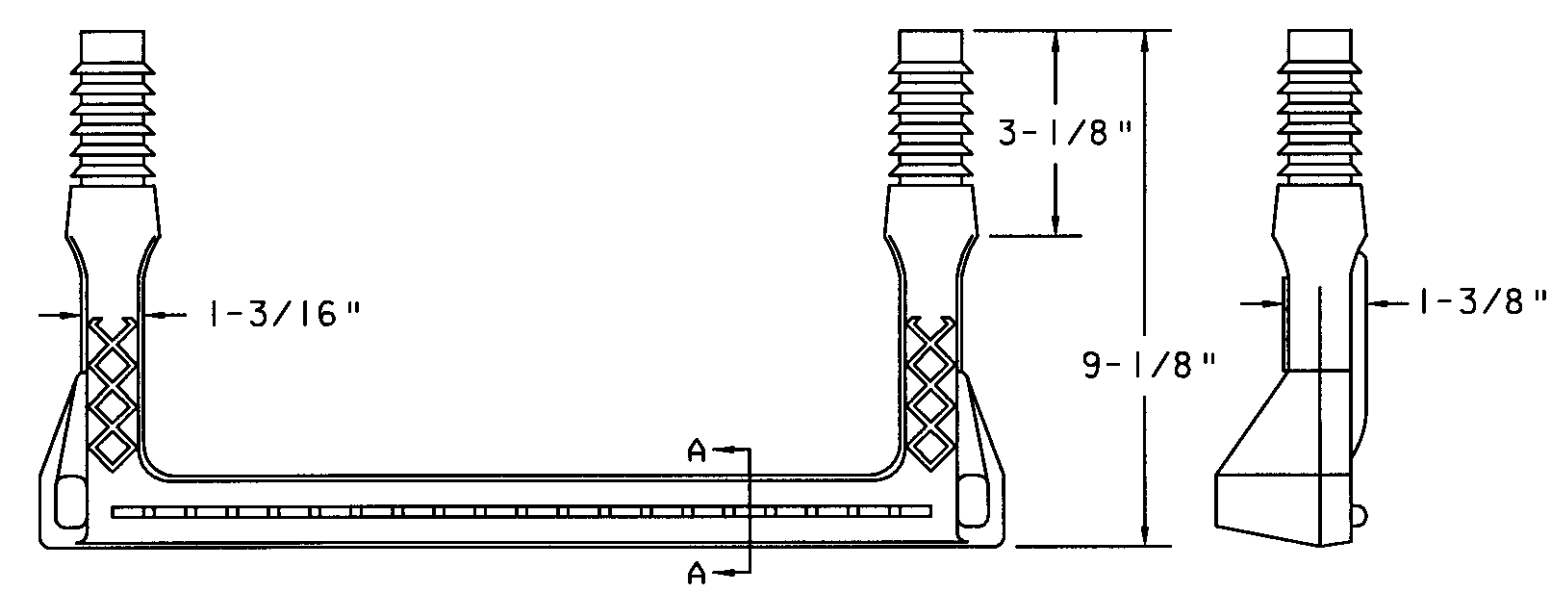
Date: 3/21/01

Sheet 2 of -

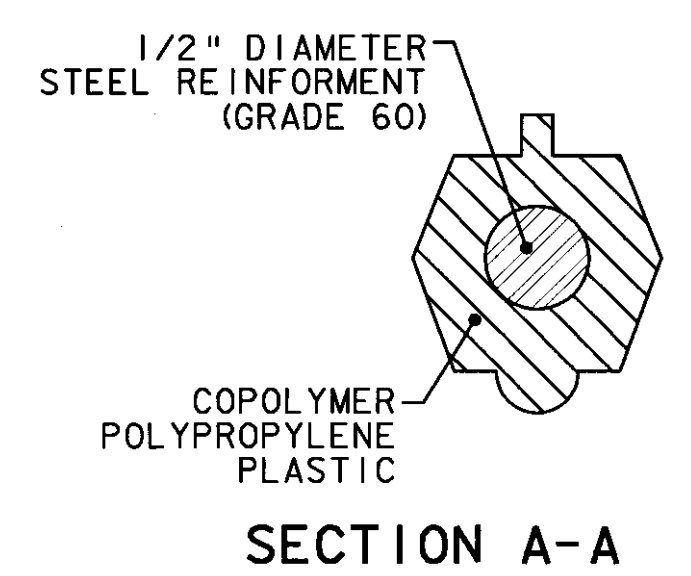
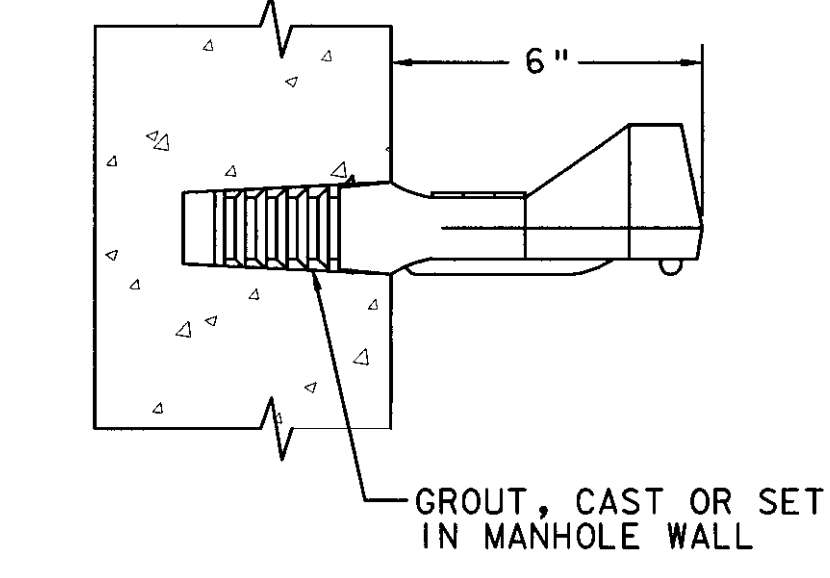
Sheet No. **2**



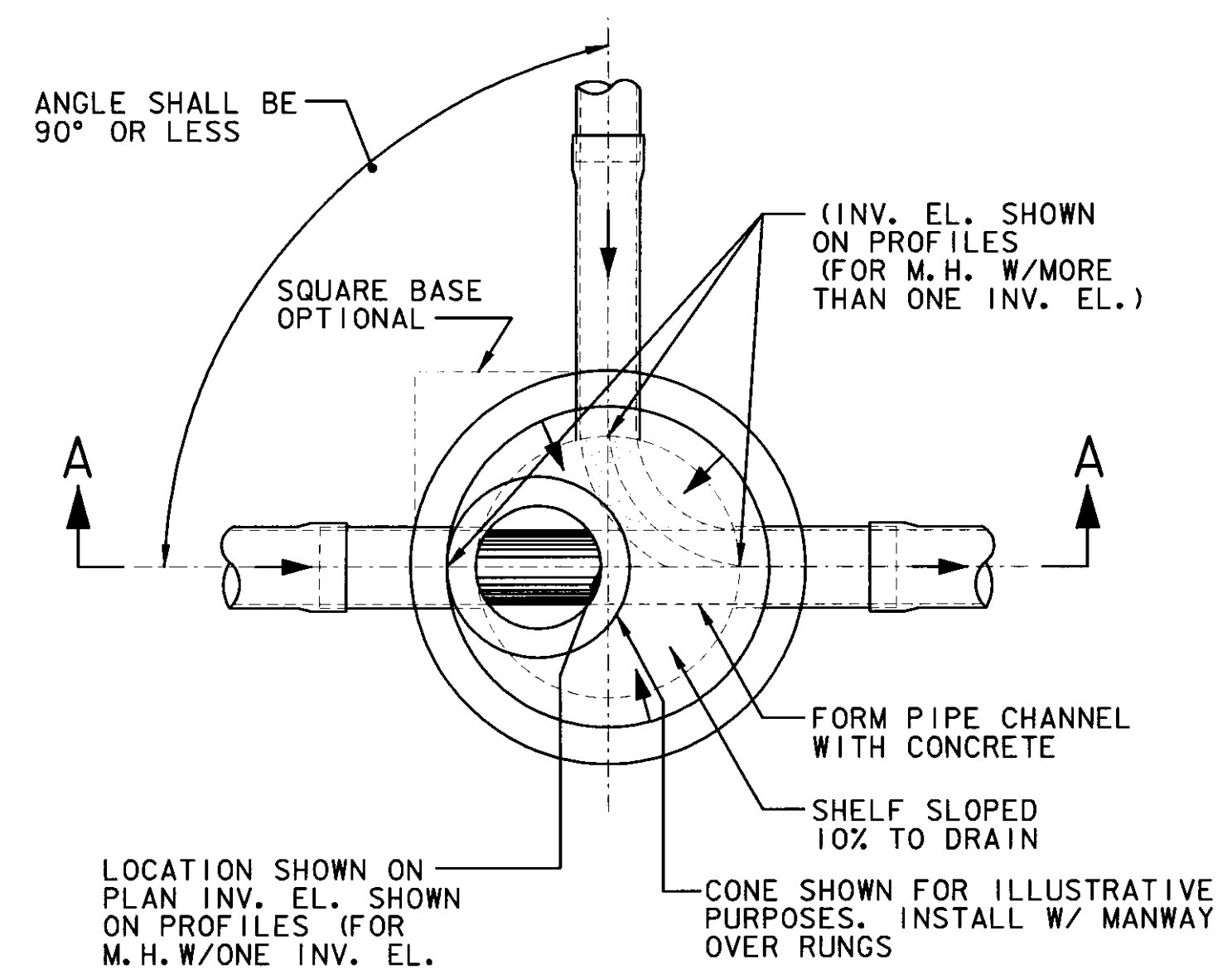
SEWERLINE PROFILE



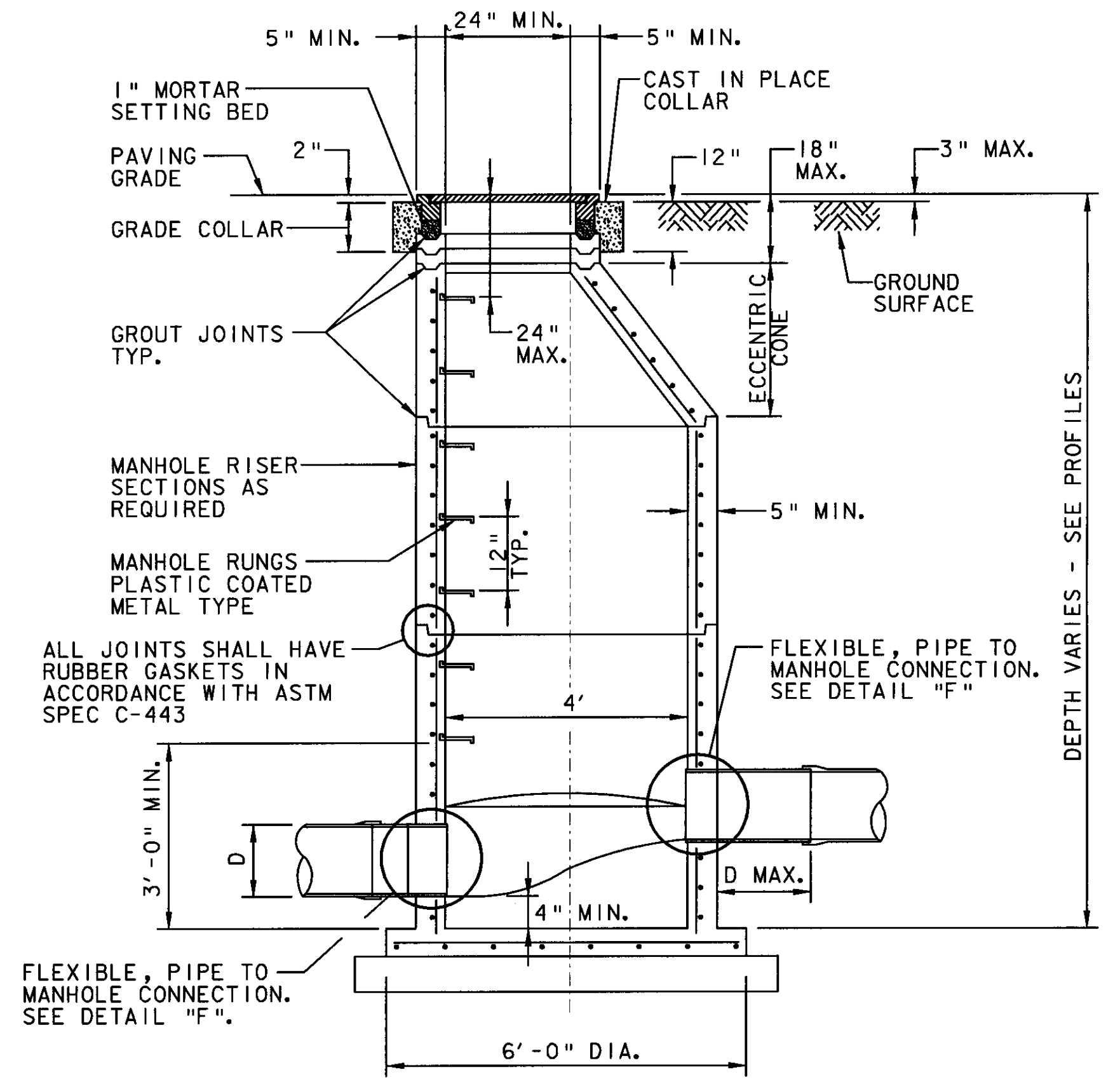
G
3 MANHOLE RUNGS
SCALE: N. T. S.



SECTION A-A

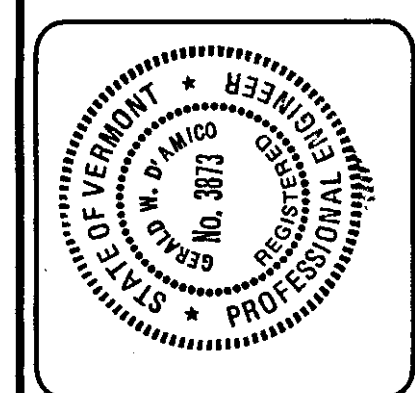


- NOTE:
1. ACTUAL MANHOLE COVER AND RING DIMENSIONS TO BE OBTAINED FROM MANHOLE COVER AND RING VENDOR DRAWINGS.
 2. SEE NOTES ON SHEET 1.
 3. MANHOLE EXTERIOR AND JOINTS TO BE WATERPROOFED.
 4. PRECAST REINFORCED CONCRETE MANHOLE SECTIONS SHALL CONFORM TO ASTM C478.
 5. MANHOLE FRAMES & COVERS SHALL BE GREY IRON, ASTM A48, CLASS 30B COMPLYING WITH REQUIREMENTS OF FS RR-F-621. USE NEENAH R-1642-1 OR EQUAL. THE WORD "SANITARY SEWER" SHALL BE CAST INTO THE COVER.



E
3 MANHOLE TYPE A
SCALE: N. T. S.

F
3 PIPE TO MANHOLE CONNECTION



REV.	DATE	DESCRIPTION	FILE NO.
			SEWER-3.DGN
			F200001718.01

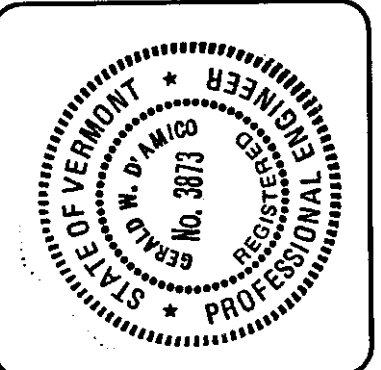
EDWARD F. KNAPP STATE AIRPORT
BERLIN, VERMONT

SEWERLINE - DETAILS

URS
ONE NORTHWAY LANE
LATHAM, NEW YORK

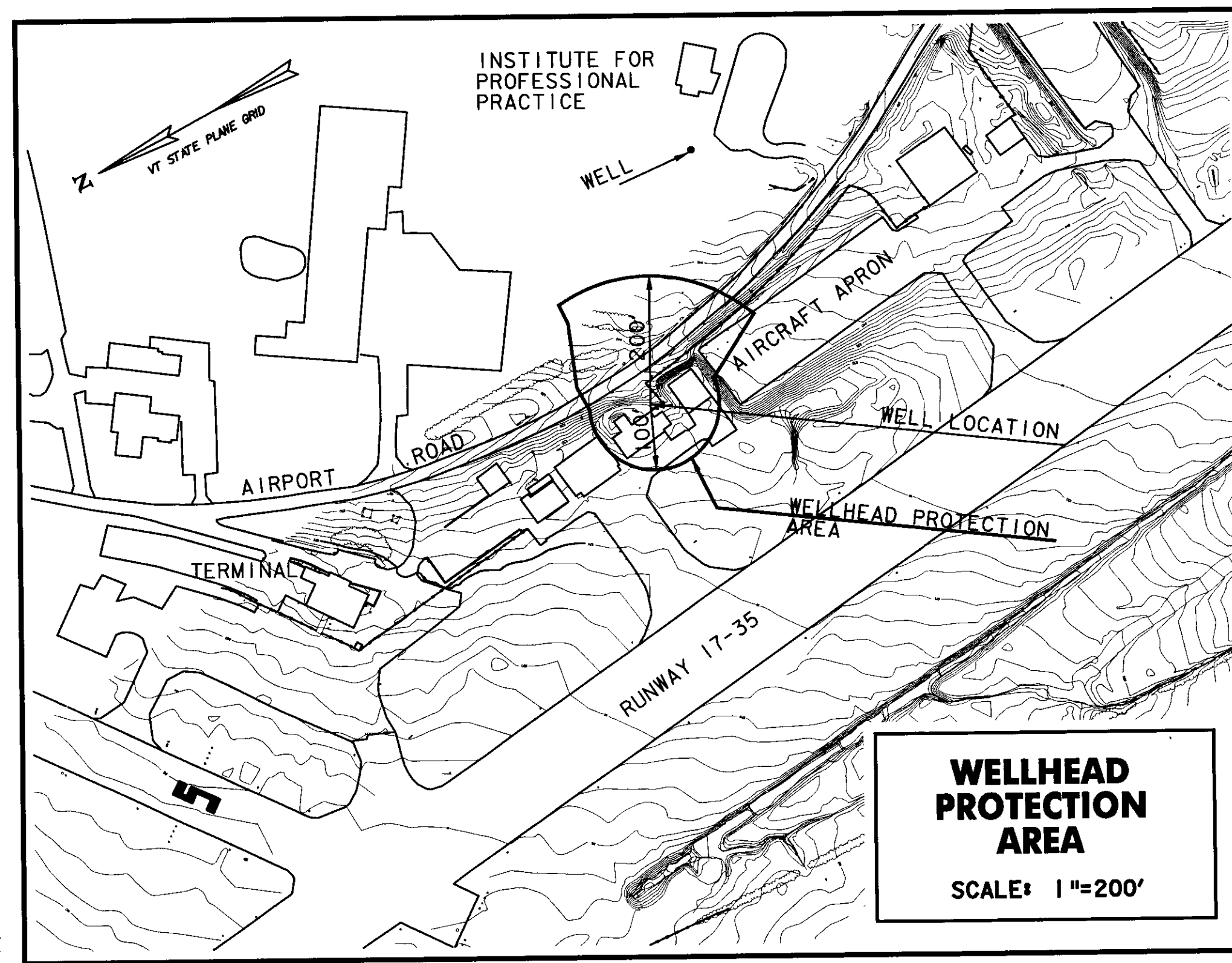
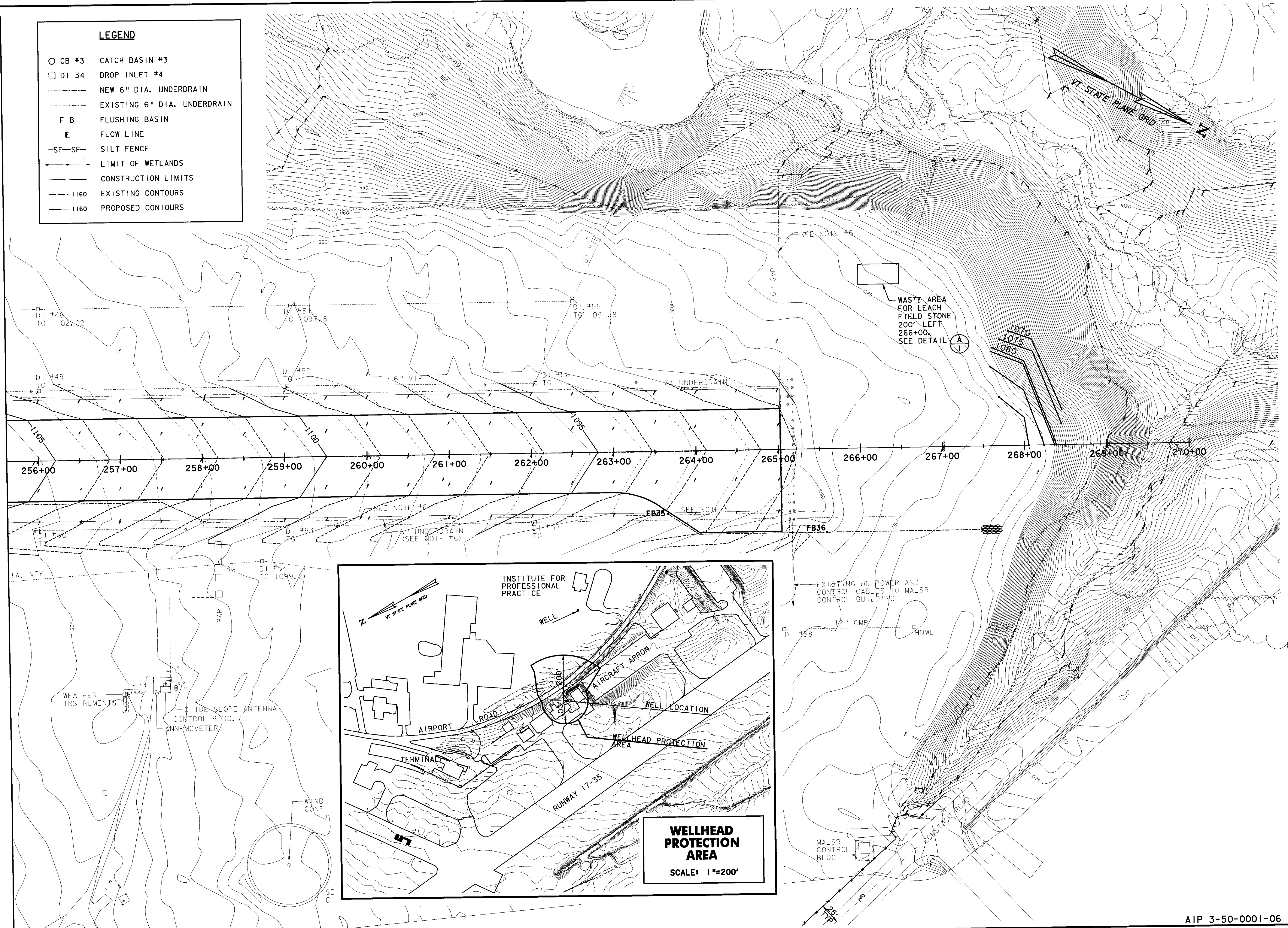
Designed by: GND
Drawn by: MMH
Checked by: PS
Approved by: GND

Scale: AS NOTED
Date: 3/21/01
Sheet 3 of 4
Sheet No. **3**



LEGEND

- CB #3 CATCH BASIN #3
- DI 34 DROP INLET #4
- NEW 6" DIA. UNDERDRAIN
- - - EXISTING 6" DIA. UNDERDRAIN
- F B FLUSHING BASIN
- E FLOW LINE
- SF-SF- SILT FENCE
- LIMIT OF WETLANDS
- CONSTRUCTION LIMITS
- - - 1160 EXISTING CONTOURS
- 1160 PROPOSED CONTOURS



REV.	DATE	DESCRIPTION

Job No. F200001718.01 File No. SEWER-4DGN

EDWARD F. KNAPP STATE AIRPORT
BERLIN, VERMONT

SEWERLINE EXTENSION
WASTE AREA

URS
ONE NORTHWAY LANE
LATHAM, NEW YORK

Designed by GVD	Scale 1" = 50'
Drawn by MMH	Date: 3/21/01
Checked by BHC	Sheet - of -
Approved by GVD	Sheet No. 4