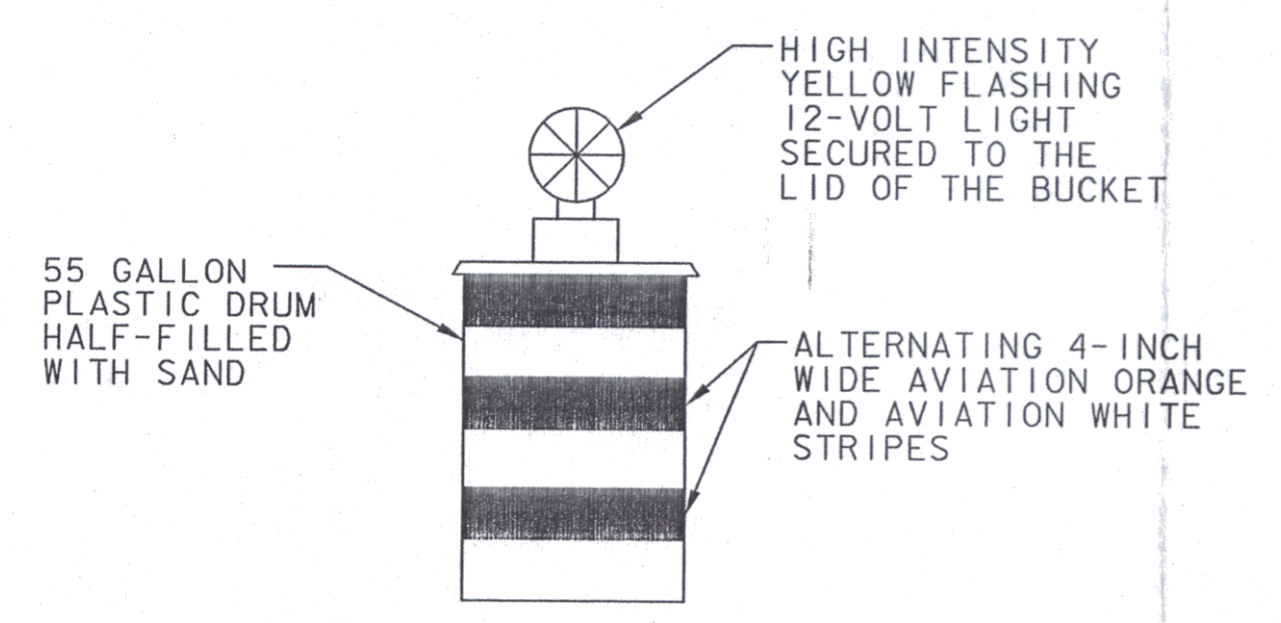
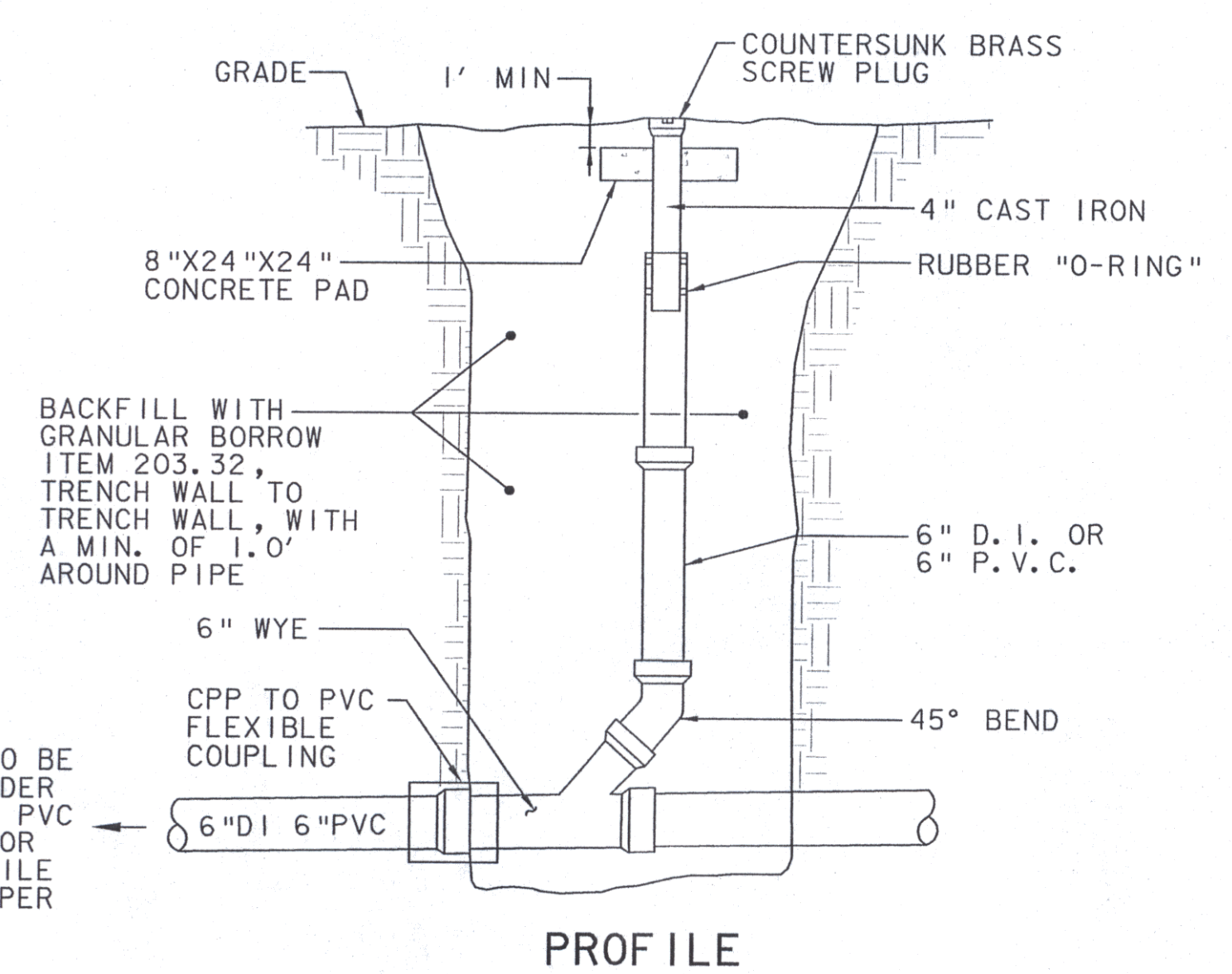
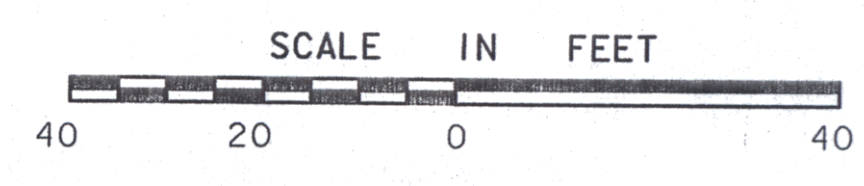
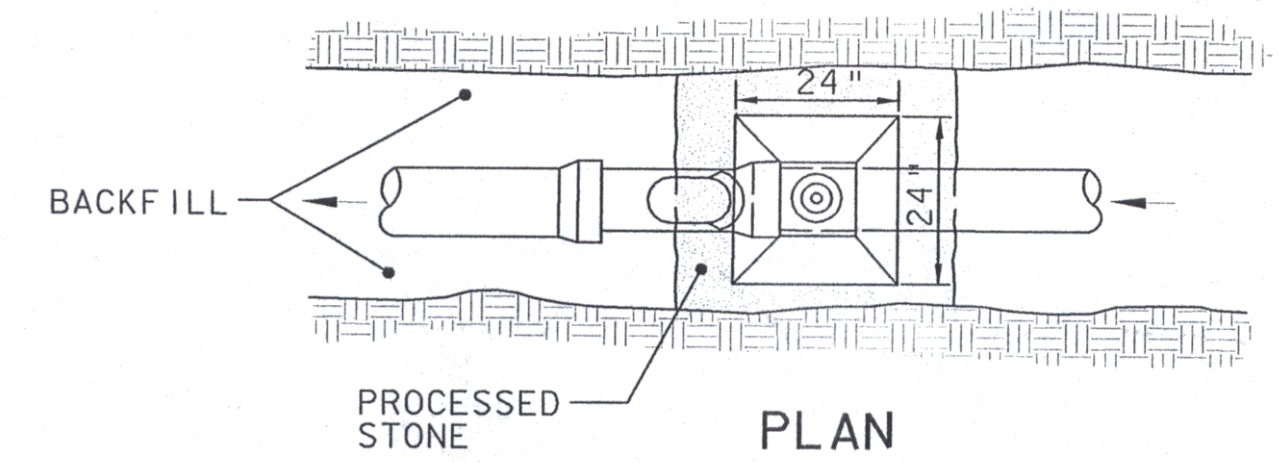


A WASTE LEACHFIELD MATERIAL DISPOSAL
SCALE: N. T. S.

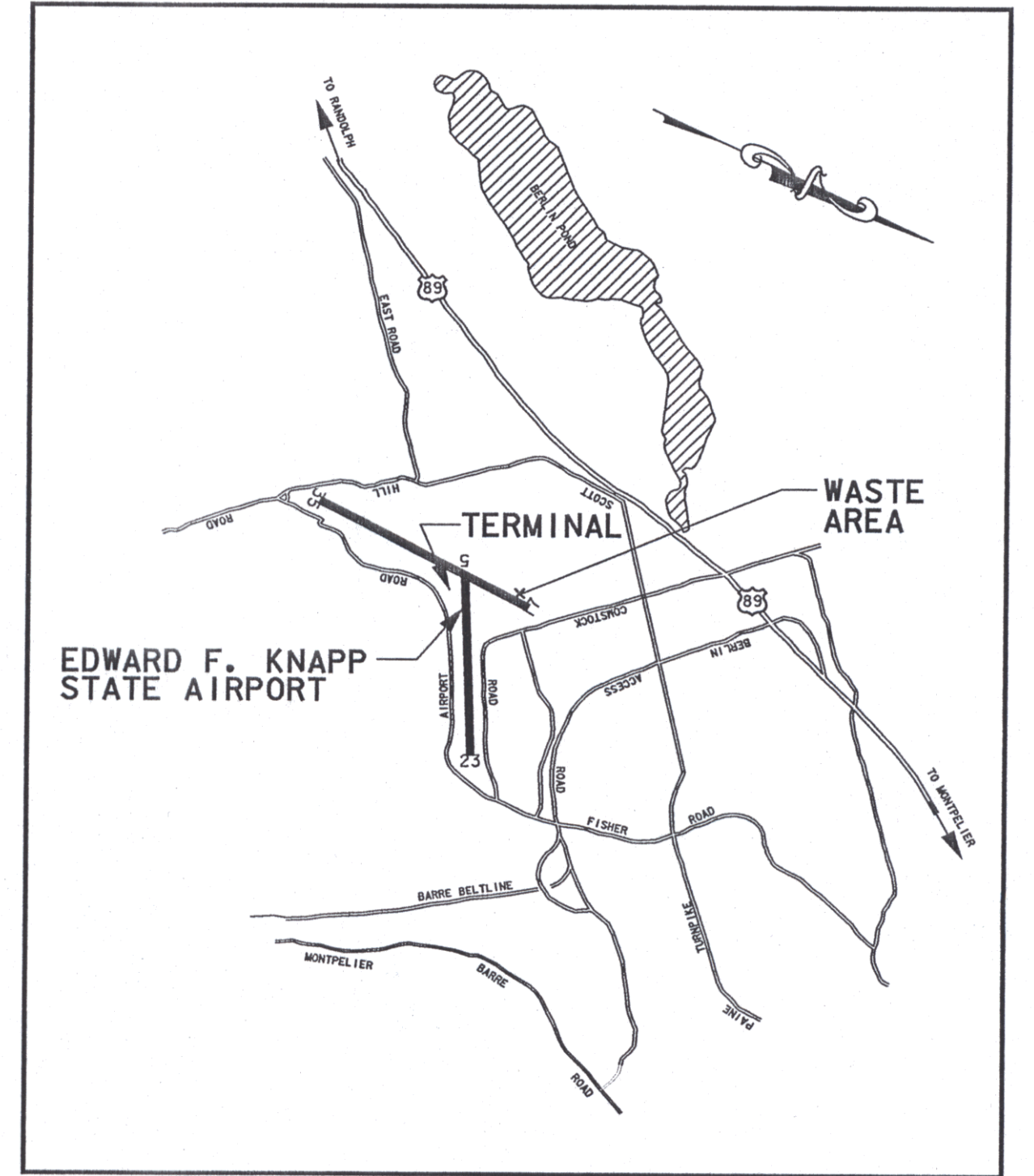


B SEWERLINE CLEAN OUT
SCALE: N. T. S.

BUCKET-TYPE CONSTRUCTION BARRICADE
SCALE: N. T. S.

GENERAL NOTES

- ALL WORK TO BE COORDINATED WITH AIRPORT MANAGER (VT. FLYING SERVICE) TO AVOID CONFLICTS WITH HANGAR AND TAXIWAY ACCESS.
- NO OPEN TRENCHES ALLOWED OVERNIGHT. CONTRACTOR TO PLACE BARRICADES AND FLASHING WARNING LIGHTS WHERE DESIGNATED BY THE ENGINEER.
- NO MATERIALS ARE TO BE STOCK PILED WHERE PROP WASH WILL BLOW DEBRIS, WASTE OR LOOSE MATERIAL (INCLUDING DUST AND DIRT) CAPABLE OF CAUSING DAMAGE TO AIRCRAFT LANDING GEAR, PROPELLERS, OR BEING INGESTED INTO JET ENGINES SHALL BE ALLOWED ON ACTIVE AIRCRAFT AREAS. SUCH MATERIALS SHALL BE REMOVED IMMEDIATELY BY THE CONTRACTOR. ALL PAVED AREAS SHALL BE SWEEPED TO REMOVE DUST, DIRT, ETC. AS DIRECTED BY THE ENGINEER.
- ALL CONTRACTOR VEHICLES ENTERING/EXITING THE SITE SHALL DO SO UNDER THE DIRECT CONTROL OF A COMPETENT FLAGGER. AIRCRAFT TRAFFIC ALWAYS HAVE PRIORITY. ALL CONTRACTOR VEHICLES TO HAVE AMBER FLASHING LIGHTS.
- EROSION CONTROL MEASURES, INCLUDING SILT FENCE AND HAY BALES TO BE PLACED WHERE DIRECTED BY THE ENGINEER.
- NEW 4" DIA. SEWERLINE CONNECTION FROM CAP BUILDING TO NEW MANHOLE @ STATION 10+90 BY OTHERS.
- CONNECT EXISTING 4" DIA. BUILDING SEWER FROM MOLLEUR HANGAR TO NEW MANHOLE. EXISTING 4" DIA. SEWER PIPE TO EXISTING SEPTIC TANK TO BE ABANDONED (PLUG END).
- PROPOSED EDGE OF PAVEMENT REFERS TO FUTURE APRON/TAXIWAY CONSTRUCTION.
- EXISTING LEACHFIELD MATERIAL (LEACHFIELD STONE) TO BE DISPOSED OF IN WASTE AREA NO. 1 AS SHOWN ON SHEET 4 OF 93 (AIP3-50-0001-06), AIRPORT IMPROVEMENTS. LEACHFIELD STONE AND WASTE MATERIAL TO BE PLACED OUTSIDE WETLAND BUFFER AREAS (50' OUTSIDE WETLAND LIMITS), AS DIRECTED BY THE ENGINEER. EXCAVATION AND DISPOSAL OF EXISTING LEACHFIELD WASTE MATERIAL PUMPING AND DISPOSAL OF EXISTING SEPTIC TANK AND CONNECTING EXISTING SEWERLINE FROM MOLLEUR HANGAR TO NEW MANHOLE TO BE PAID FOR UNDER ITEM 628.42 TRANSFER TO NEW SYSTEM - SANITARY SEWER.
- ALL NEW SEWERLINES WILL BE PRESSURE TESTED BY THE CONTRACTOR. ALL NEW MANHOLES AND SEWERLINES WILL BE SUBJECT TO LEAKAGE TESTING BY THE CONTRACTOR. TESTING SHALL CONFORM TO VT. ANR/ENVIRONMENTAL PROTECTION RULES AND VAOT SPECIFICATIONS SECTION 628, OR SECTION 629.
- CONTACT BERLIN SEWER COMMISSION FOR INSPECTION OF SEWERLINE PRIOR TO BACKFILLING. (SCOTT BRIMBLE COMB @ 229-0320).
- WELLHEAD PROTECTION AREA IS SHOWN ON SHEET 4/4.
- ALL SEWERLINES BETWEEN STATION 10+00 AND MANHOLE AT STATION 13+15 MUST BE CONSTRUCTED TO WATERLINE STANDARDS. PRESSURE TEST ALL LINES AND JOINTS TO 50 PSI MINIMUM. ALL MANHOLES TO BE VACUUM TESTED.



VICINITY MAP
SCALE: N. T. S.

EDWARD F. KNAPP STATE AIRPORT
BERLIN, VERMONT

SEWERLINE - EXTENSION PLAN

URS
ONE NORTHWAY LANE
LATHAM, NEW YORK

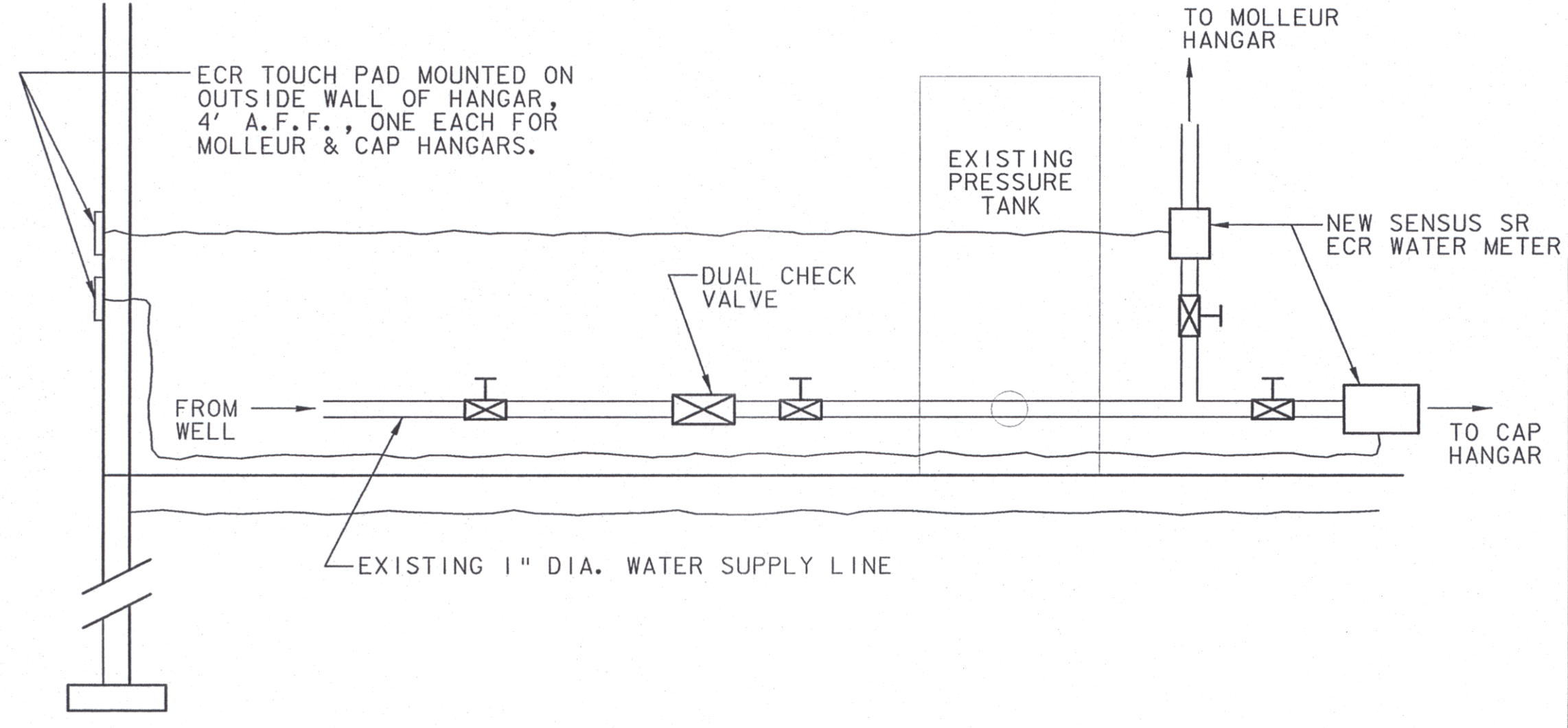
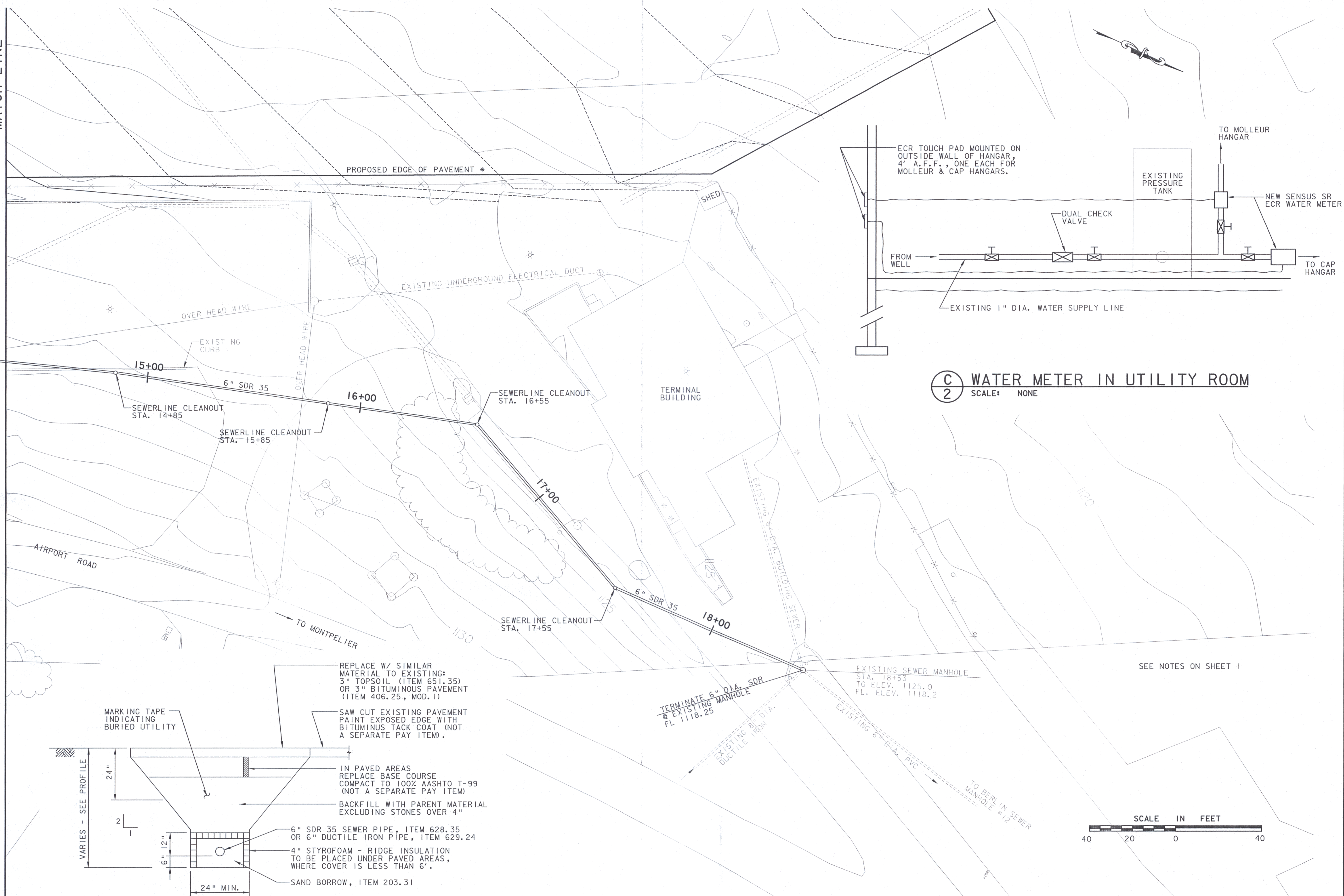
REV.	DATE	DESCRIPTION

Job No. F200001718.01 File No. SEWER-LDN

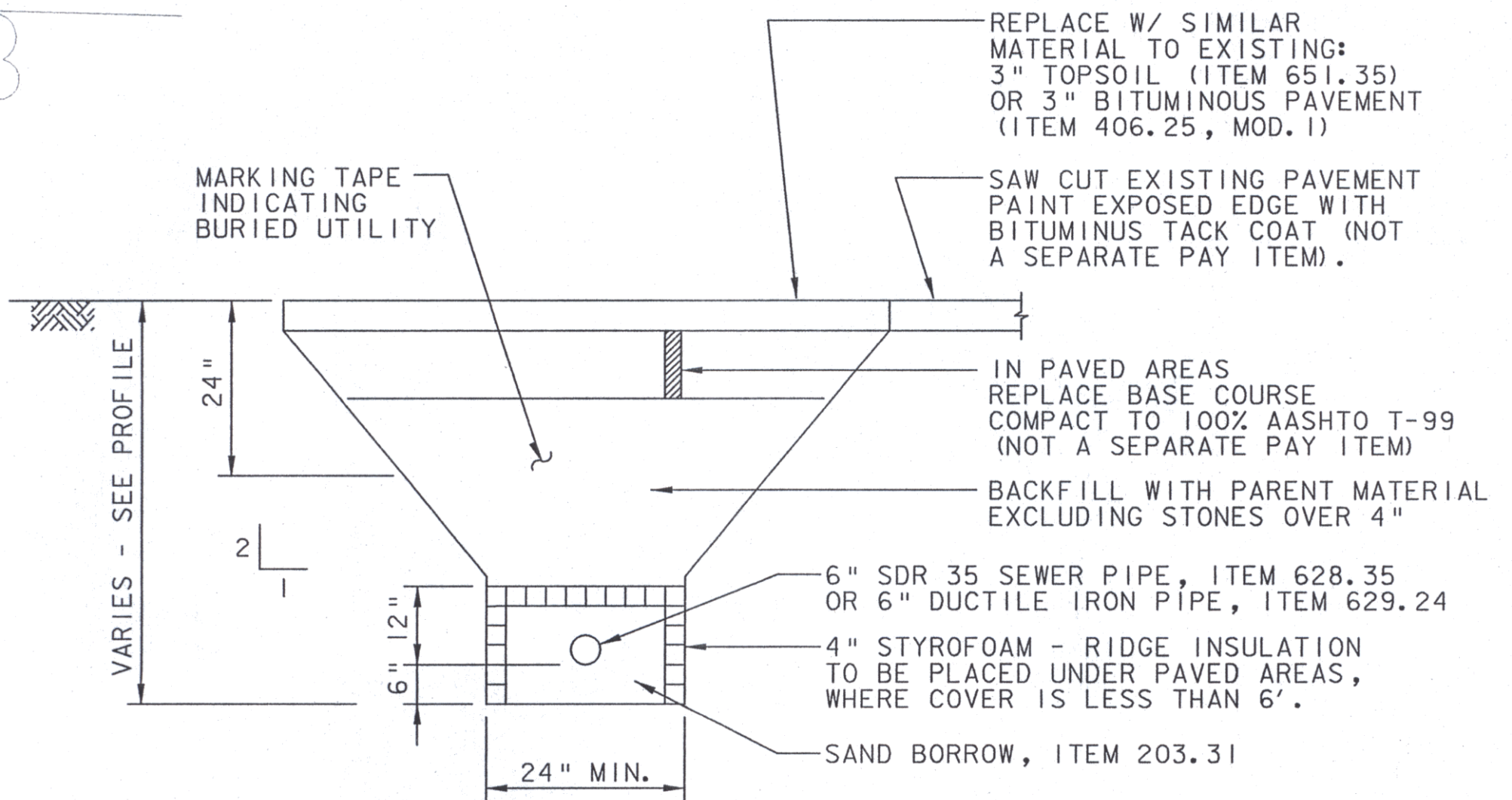
Designed by: GMD
Drawn by: MAM
Checked by: PS
Approved by: GMD

Scale: 1" = 20'
Date: 6/13/01
Sheet - of -
Sheet No. **1**

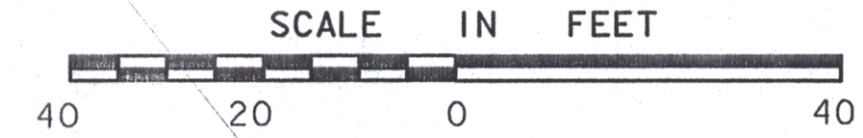
MATCH LINE



(C) WATER METER IN UTILITY ROOM
 2 SCALE: NONE



(D) SEWERLINE TYPICAL
 SCALE: N. T. S.



REV.	DATE	DESCRIPTION

EDWARD F. KNAPP STATE AIRPORT
 BERLIN, VERMONT

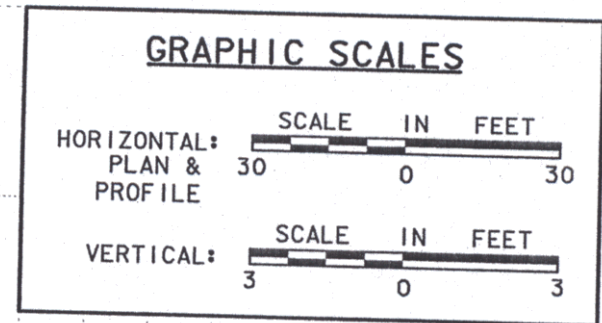
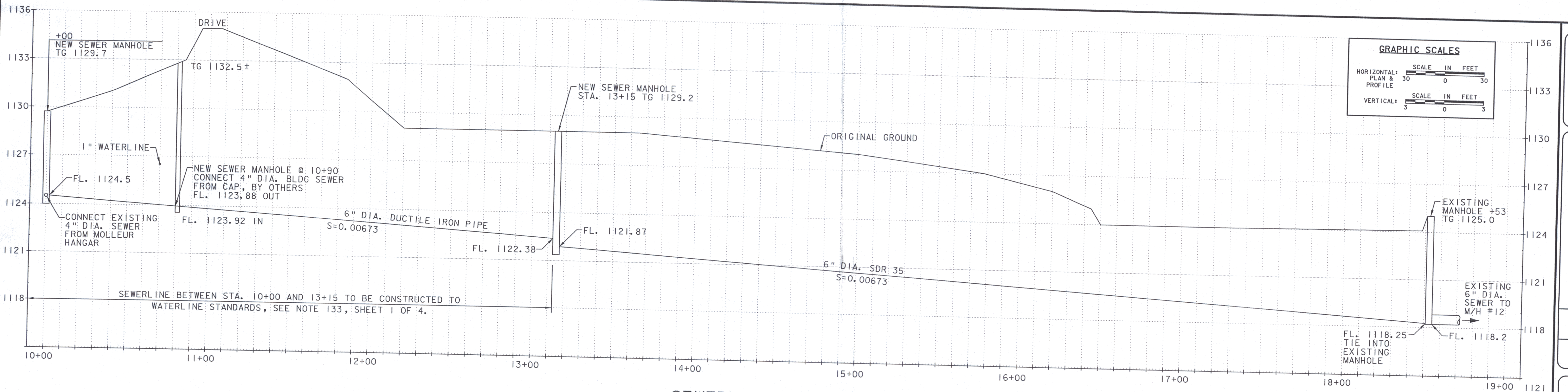
SEWERLINE - EXTENSION PLAN

Job No. F200001718.01
 File No. SEWER-2.DGN

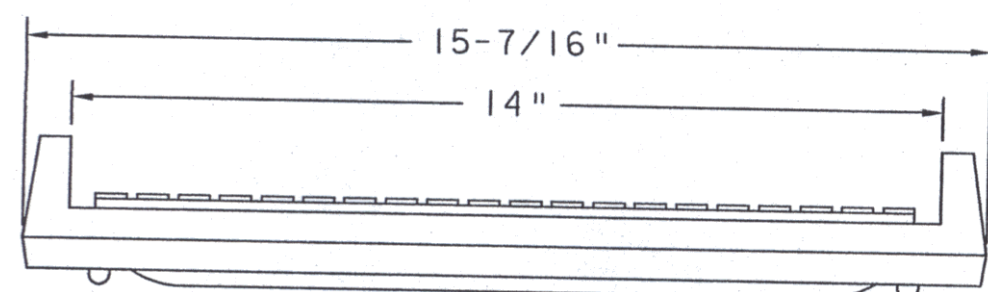
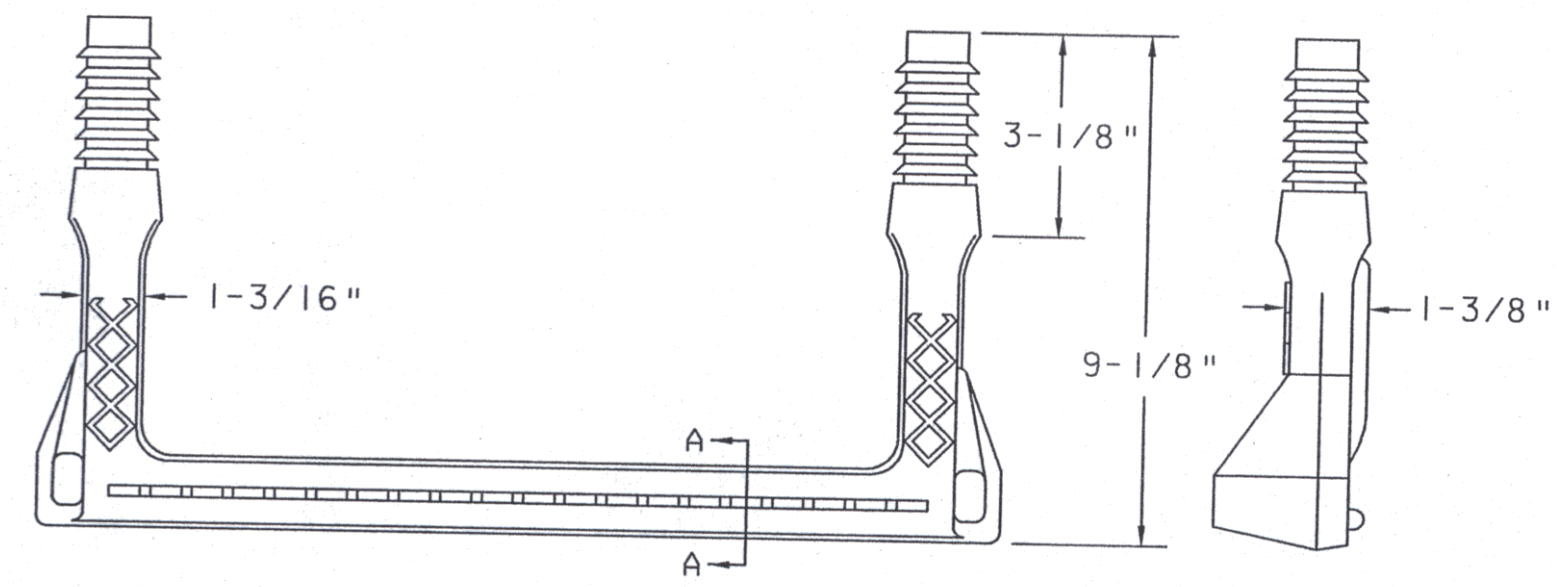
URS
 ONE NORTHWAY LANE
 LATHAM, NEW YORK

Designed by: GWD
 Drawn by: MMM
 Checked by: PS
 Approved by: GWD

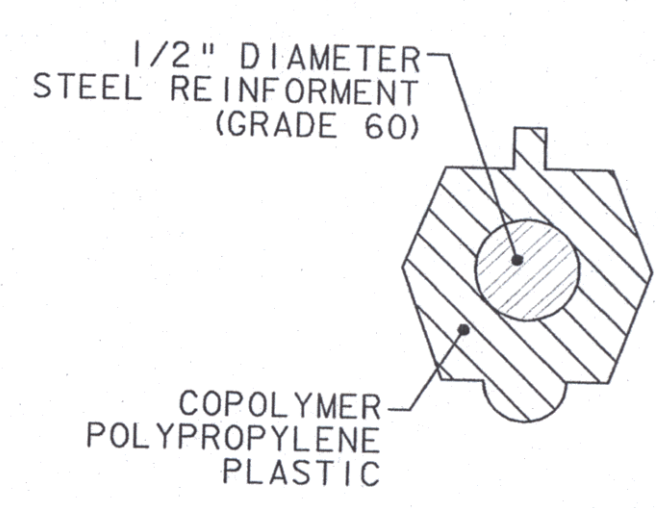
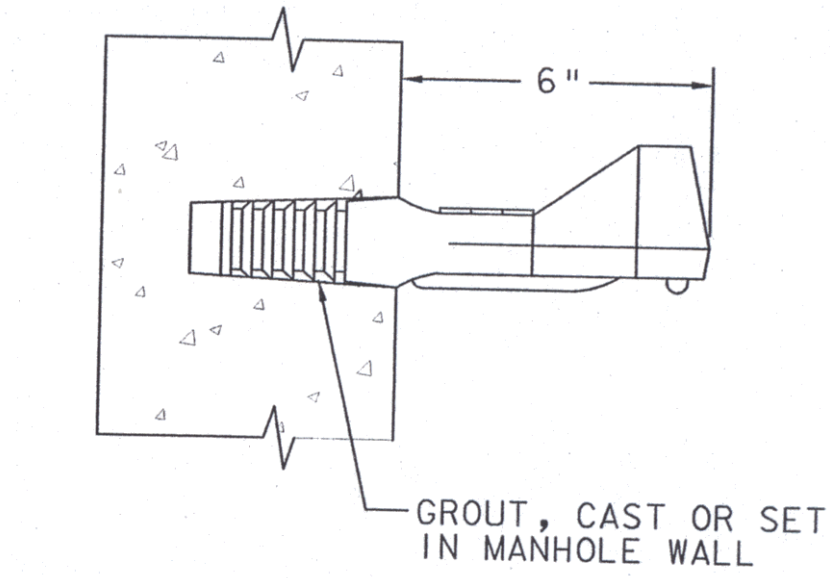
Scale: 1" = 20'
 Date: 6/13/01
 Sheet 2 of -
 Sheet No. **2**



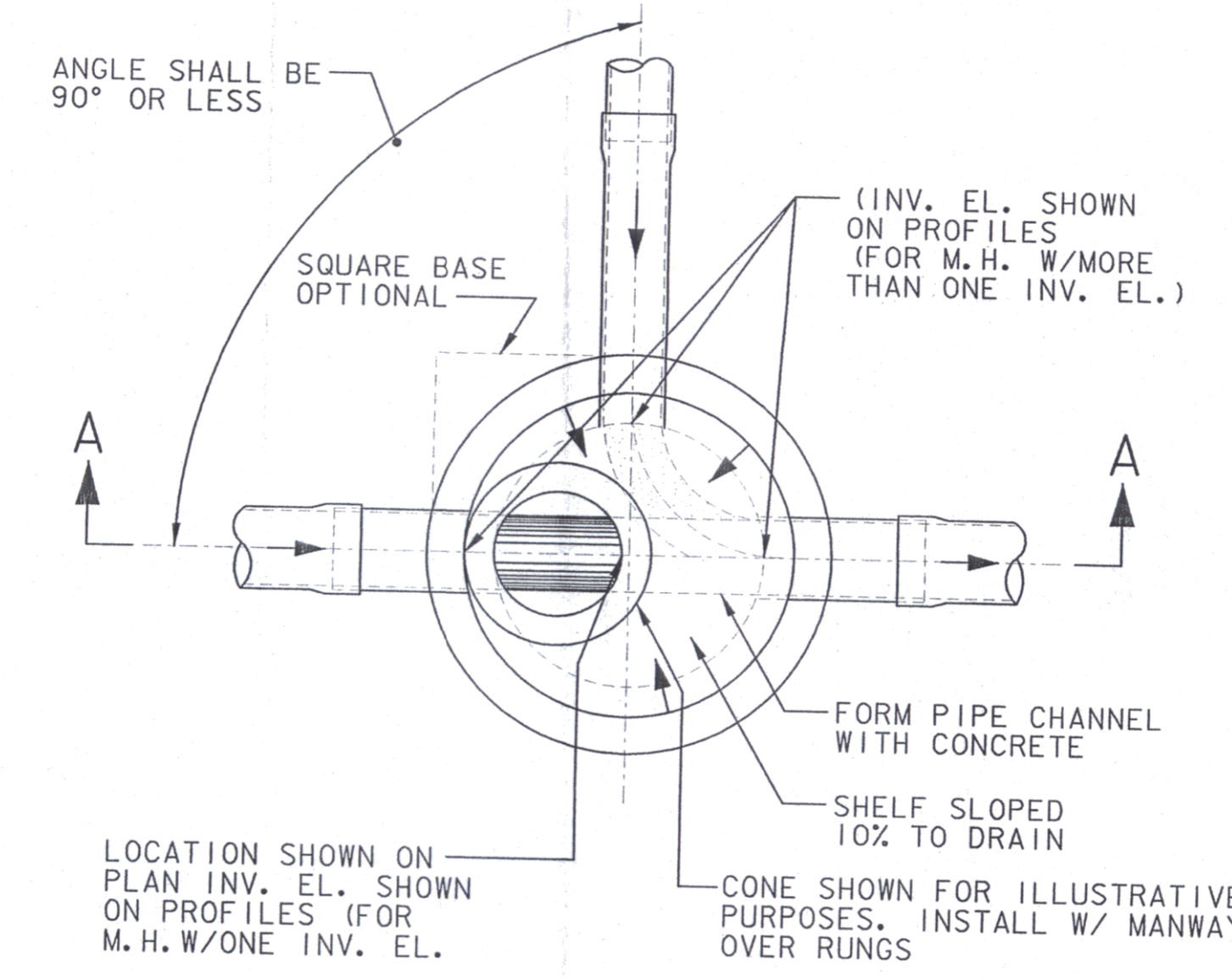
SEWERLINE PROFILE



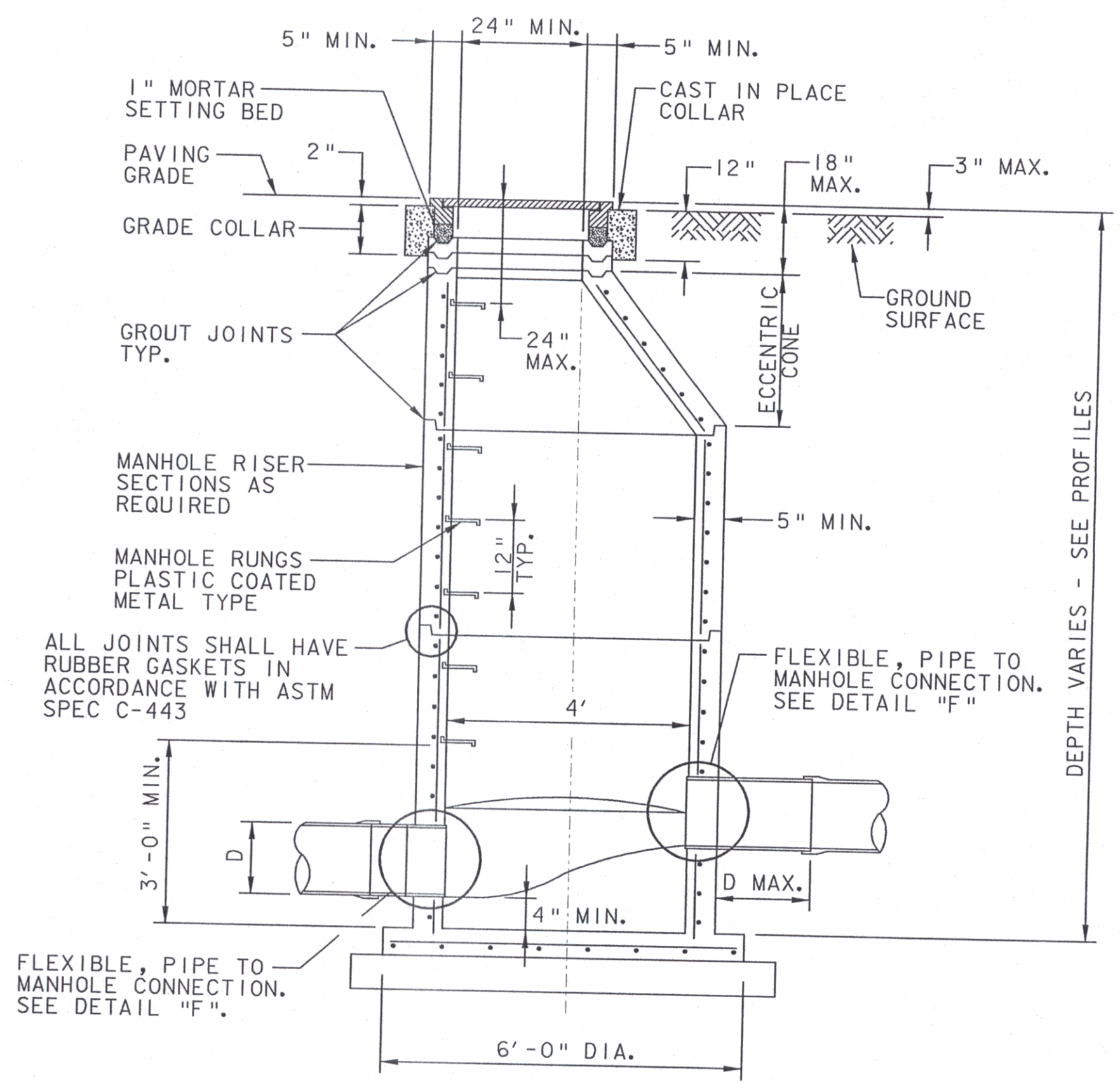
G
3 MANHOLE RUNGS
SCALE: N. T. S.



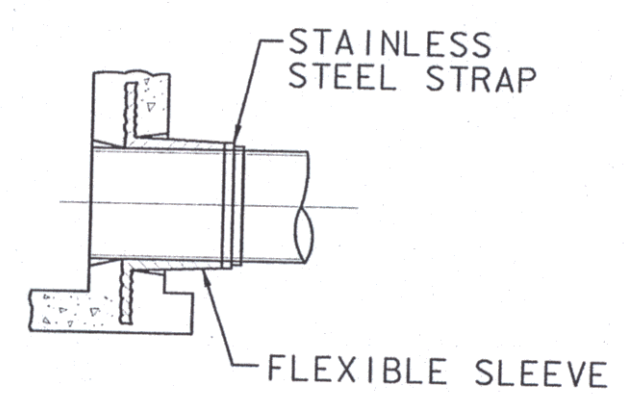
SECTION A-A



- NOTE:
1. ACTUAL MANHOLE COVER AND RING DIMENSIONS TO BE OBTAINED FROM MANHOLE COVER AND RING VENDOR DRAWINGS.
 2. SEE NOTES ON SHEET 1.
 3. MANHOLE EXTERIOR AND JOINTS TO BE WATERPROOFED.
 4. PRECAST REINFORCED CONCRETE MANHOLE SECTIONS SHALL CONFORM TO ASTM C478.
 5. MANHOLE FRAMES & COVERS SHALL BE GREY IRON, ASTM A48, CLASS 30B COMPLYING WITH REQUIREMENTS OF FS RR-F-621. USE NEENAH R-1642-1 OR EQUAL. THE WORD "SANITARY SEWER" SHALL BE CAST INTO THE COVER.



E
3 MANHOLE TYPE A
SCALE: N. T. S.

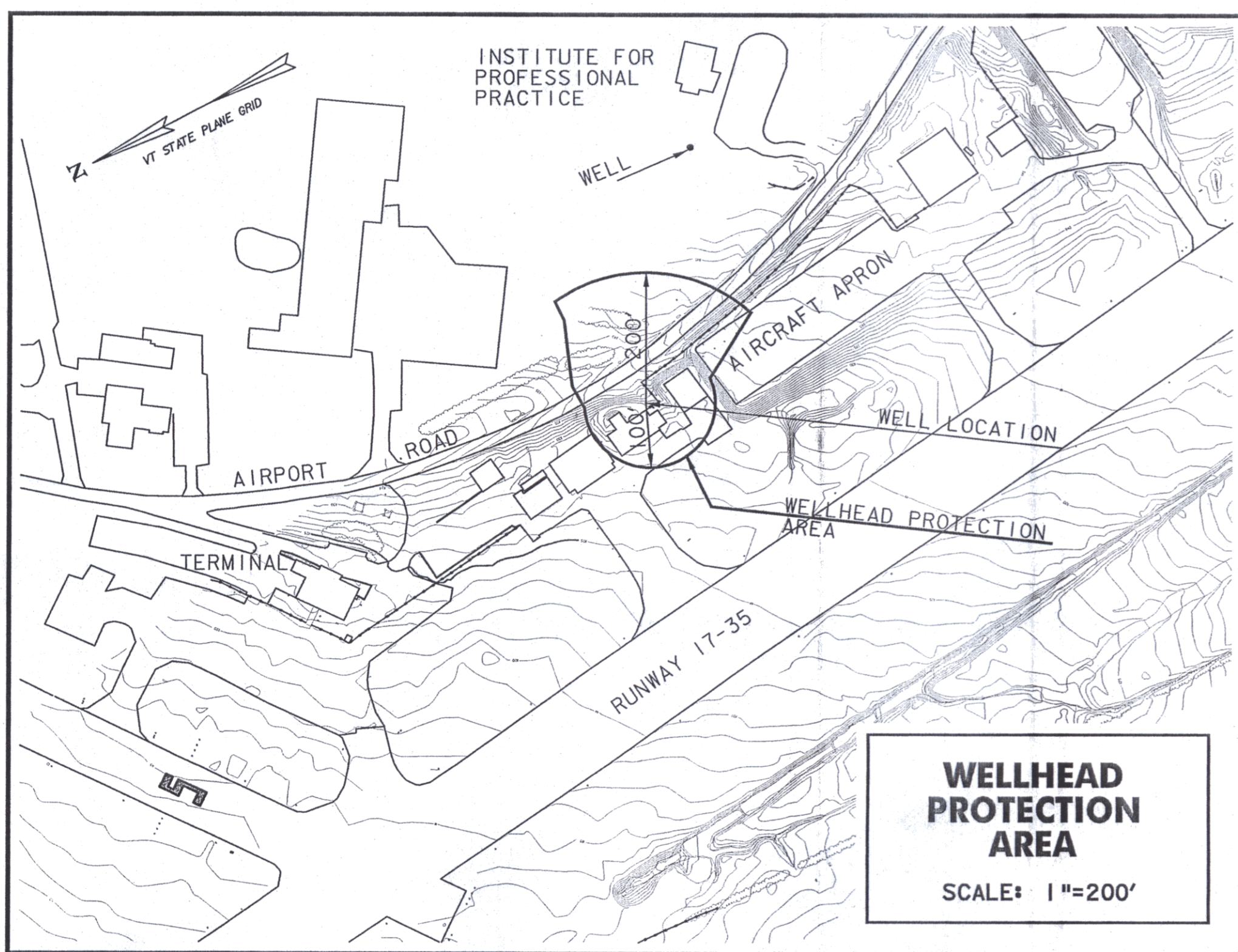
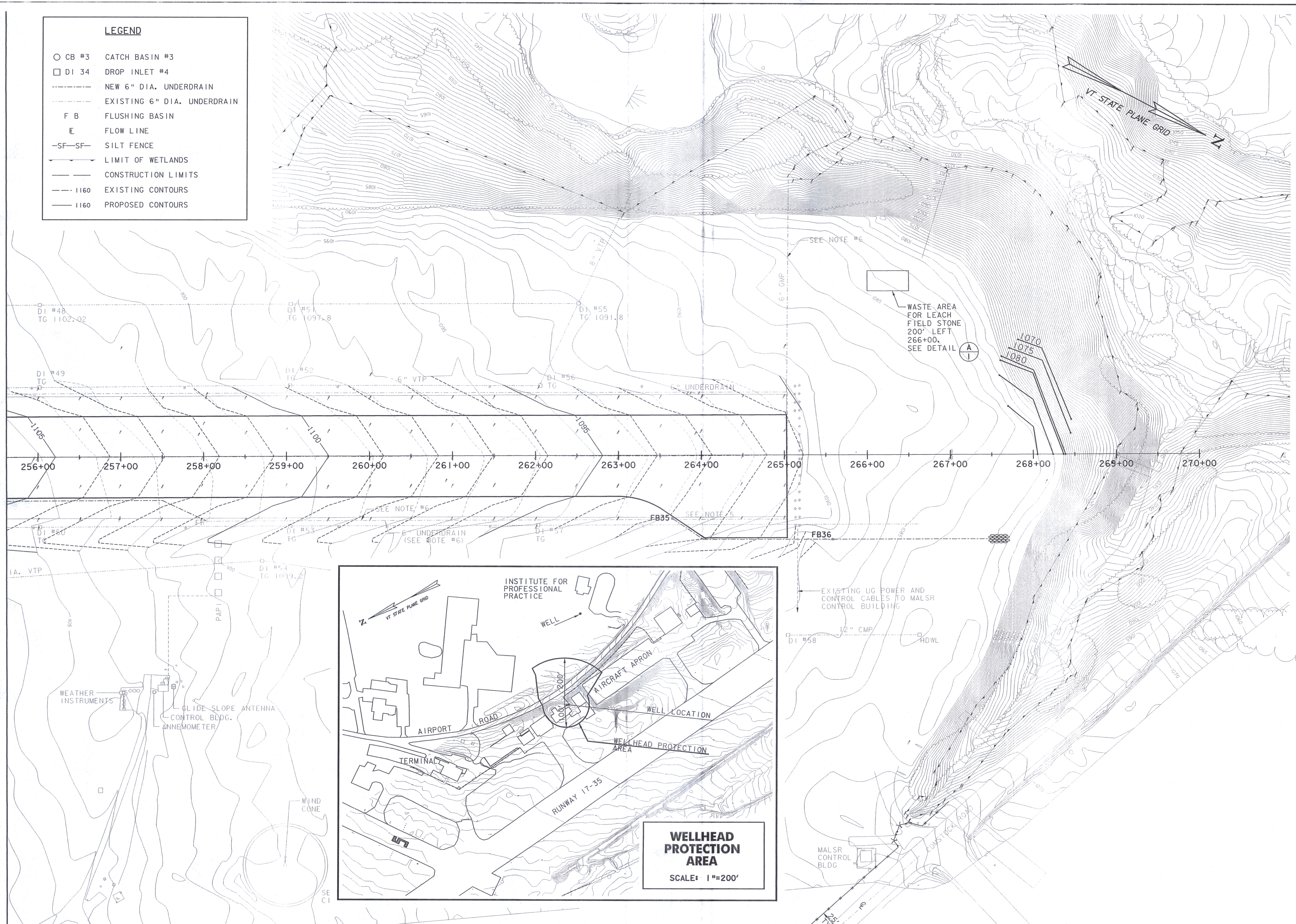


F
3 PIPE TO MANHOLE CONNECTION

Job No. F200001718.01		File No. SEWER-3DGN	
REV.	DATE	DESCRIPTION	
EDWARD F. KNAPP STATE AIRPORT BERLIN, VERMONT			
SEWERLINE - DETAILS			
URS ONE NORTHWAY LANE LATHAM, NEW YORK			
Designed by:	MM	Checked by:	PS
Drawn by:	MM	Approved by:	GWD
Scale:	AS NOTED		
Date:	6/13/01		
Sheet:	3 of 4		
Sheet No.			

LEGEND

○ CB #3	CATCH BASIN #3
□ DI 34	DROP INLET #4
---	NEW 6" DIA. UNDERDRAIN
---	EXISTING 6" DIA. UNDERDRAIN
F B	FLUSHING BASIN
E	FLOW LINE
-SF-SF-	SILT FENCE
---	LIMIT OF WETLANDS
---	CONSTRUCTION LIMITS
---	EXISTING CONTOURS
---	PROPOSED CONTOURS



EDWARD F. KNAPP STATE AIRPORT BERLIN, VERMONT	
REV.	DATE
SEWERLINE EXTENSION WASTE AREA	
Job No. F200001718.01	
File No. SEWER-4.DGN	
URS	
ONE NORTHWAY LANE LATHAM, NEW YORK	
Designed by: GMD	MM
Drawn by:	BIC
Checked by:	GMD
Approved by:	
Scale:	1" = 50'
Date:	6/13/01
Sheet:	- of -
Sheet No:	4