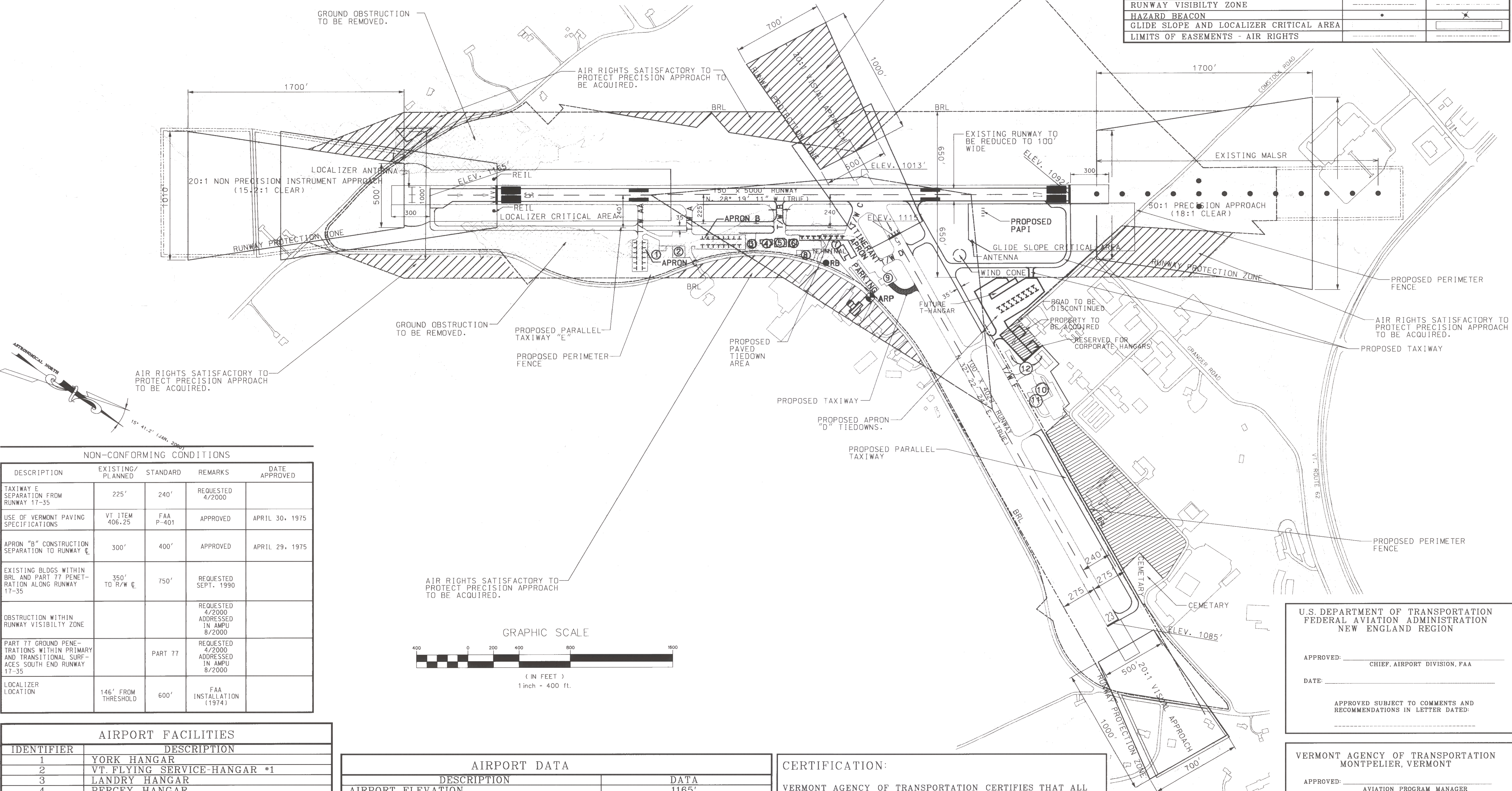


RUNWAY DATA (ULTIMATE)					
RUNWAY	5	23	17	35	
RUNWAY LENGTH	3497'	4022'	5001'	150'	
WIDTH	100'	100'	150'	150'	
SAFETY AREA WIDTH	150'	150'	150'	150'	
TAXIWAY WIDTH	35' MIN	35' MIN	35' MIN	35' MIN	
SURFACE	BIT CONCRETE		BIT CONCRETE		
PAVEMENT STRENGTH	30,000 *S/W - 44,000 *D/W		68,000 *D/W		
RUNWAY LIGHTING	MIRLS		HIRLS		
RUNWAY MARKING	VISUAL		PRECISION		
EFFECTIVE GRADIENT	0.745%		1.46%		
NAV-AIDS	NONE		ILS		
RUNWAY SAFETY AREAS (LENGTH BEYOND THRESHOLD)	300'		300'		
VISUAL AIDS	NONE		MALSR		
RUNWAY END COORDINATES	44° 12' 08.77" N. 72° 33' 56.72" W.	44° 12' 42.31" N. 72° 33' 27.16" W.	44° 12' 23.62" N. 72° 34' 05.64" W.	44° 11' 40.15" N. 72° 33' 35.08" W.	REILS
RUNWAY APPROACH CLASSIFICATION	VISUAL		PRECISION		

LEGEND		
ITEM	EXISTING	ULTIMATE
AIRPORT PROPERTY LINE	---	---
CONTOURS (USGS-MSL) DATUM	---	---
AIRPORT REFERENCE POINT (A.R.P.)	●	●
AIRPORT ROTATING BEACON	●	●
BUILDING RESTRICTION LINE (B.R.L.)	---	---
MARSH/WETLAND	---	---
WATER COURSE	---	---
TREELINE/BRUSH	---	---
SAFETY AREA	---	---
AIRPORT BUILDINGS/FACILITIES	---	---
AUTO PARKING	---	AS SHOWN
TIEDOWNS	---	TTTTTTTT
RUNWAY VISIBILITY ZONE	---	---
HAZARD BEACON	●	●
GLIDE SLOPE AND LOCALIZER CRITICAL AREA	---	---
LIMITS OF EASEMENTS - AIR RIGHTS	---	---



NON-CONFORMING CONDITIONS				
DESCRIPTION	EXISTING/PLANNED	STANDARD	REMARKS	DATE APPROVED
TAXIWAY E SEPARATION FROM RUNWAY 17-35	225'	240'	REQUESTED 4/2000	
USE OF VERMONT PAVING SPECIFICATIONS	VT ITEM 406.25	FAA P-401	APPROVED	APRIL 30, 1975
APRON "B" CONSTRUCTION SEPARATION TO RUNWAY E	300'	400'	APPROVED	APRIL 29, 1975
EXISTING BLDGS WITHIN BRL AND PART 77 PENETRATION ALONG RUNWAY 17-35	350' TO R/W E	750'	REQUESTED SEPT. 1990	
OBSTRUCTION WITHIN RUNWAY VISIBILITY ZONE			REQUESTED 4/2000 ADDRESSED IN AMPU 8/2000	
PART 77 GROUND PENETRATIONS WITHIN PRIMARY AND TRANSITIONAL SURFACES SOUTH END RUNWAY 17-35		PART 77	REQUESTED 4/2000 ADDRESSED IN AMPU 8/2000	
LOCALIZER LOCATION	146' FROM THRESHOLD	600'	FAA INSTALLATION (1974)	

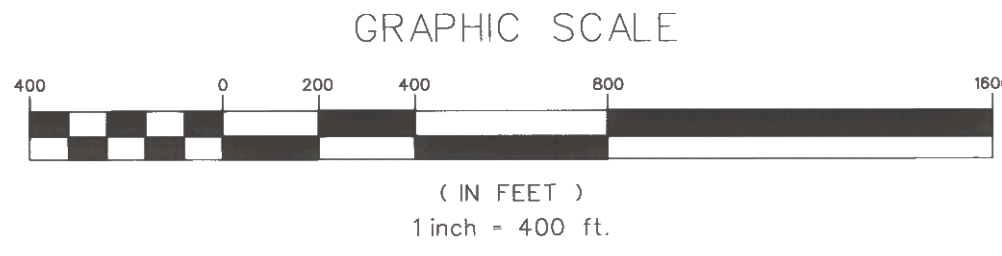
AIRPORT FACILITIES	
IDENTIFIER	DESCRIPTION
1	YORK HANGAR
2	VT FLYING SERVICE-HANGAR #1
3	LANDRY HANGAR
4	PERCEY HANGAR
5	STATE HANGAR
6	VT FLYING SERVICE-HANGAR #2
7	TERMINAL BUILDING
8	STATE MAINTENANCE GARAGE
9	FUEL FARM AND APRON
10	MAC STEVENS MEMORIAL HANGAR
11	DISTRICT #5 MAINT. ADMIN. & GARAGE
12	DUBOIS "T" HANGARS

AIRPORT DATA	
DESCRIPTION	DATA
AIRPORT ELEVATION	1165'
MEAN MAXIMUM TEMP. (HOTTEST MONTH)	26.6 °C
COMBINED WIND COVERAGE (12 MPH)	96.7%
MAGNETIC VARIATION	15° 41.2" W (JAN, 2000)
AIRCRAFT DESIGN GROUP	II
AIRCRAFT APPROACH SPEED	B
CRITICAL AIRCRAFT	CESSNA CITATION III
AIRPORT REFERENCE POINT	LAT. 44° 12' 12" N. LONG. 72° 33' 46" W.

**CERTIFICATION:**

VERMONT AGENCY OF TRANSPORTATION CERTIFIES THAT ALL AIRPORT ELEMENTS SHOWN ON THIS ALP ARE IN ACCORDANCE WITH CRITERIA CONTAINED IN THE CURRENT EDITION OF FAA ADVISORY CIRCULAR 150/5300-13 EXCEPT AS NOTED IN THE TABLE ENTITLED "NON-CONFORMING CONDITIONS."

NAME: \_\_\_\_\_ DATE: \_\_\_\_\_



U.S. DEPARTMENT OF TRANSPORTATION  
FEDERAL AVIATION ADMINISTRATION  
NEW ENGLAND REGION

APPROVED: \_\_\_\_\_  
CHIEF, AIRPORT DIVISION, FAA

DATE: \_\_\_\_\_

APPROVED SUBJECT TO COMMENTS AND RECOMMENDATIONS IN LETTER DATED: \_\_\_\_\_

VERMONT AGENCY OF TRANSPORTATION  
MONTPELIER, VERMONT

APPROVED: \_\_\_\_\_  
AVIATION PROGRAM MANAGER

DATE: \_\_\_\_\_

APPROVED: \_\_\_\_\_  
DIRECTOR OF MAINTENANCE AND AVIATION DIVISION

DATE: \_\_\_\_\_

EDWARD F. KNAPP STATE AIRPORT  
BERLIN, VERMONT

AIRPORT MASTER PLAN UPDATE  
AIRPORT LAYOUT PLAN

**URS Greiner**  
1 NORTHWAY LN.  
LATHAM, NEW YORK

Designed by: G.W.D.  
Drawn by: AL BEY  
Checked by: M.L.C.  
Approved by: C.W.D.

Scale: 1"=400'

Date: MARCH, 2000

Sheet 30f 9

Sheet No. 3

Job No. F200001718.01  
File No. KNAPP\_ALP.DGN

8/01 REVISE APPROVAL/CERTIFICATION BLOCK  
2/01 MINOR CORRECTION

REV. DATE DESCRIPTION