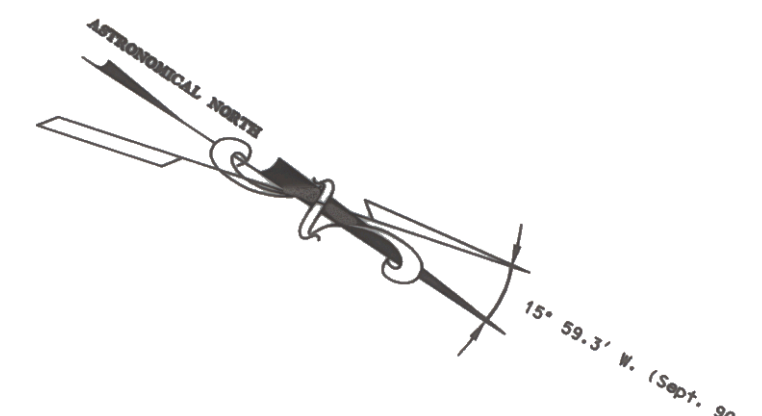
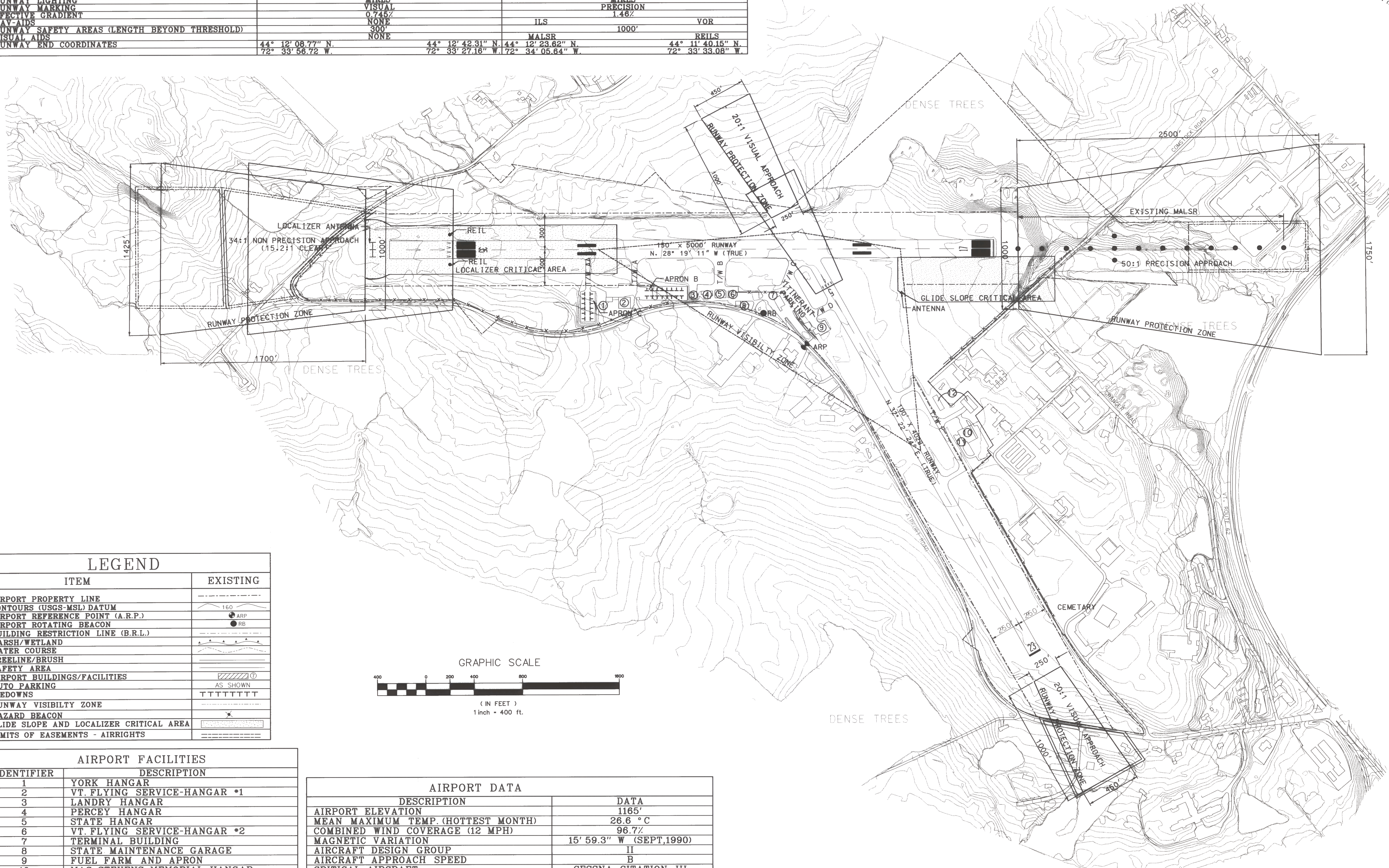
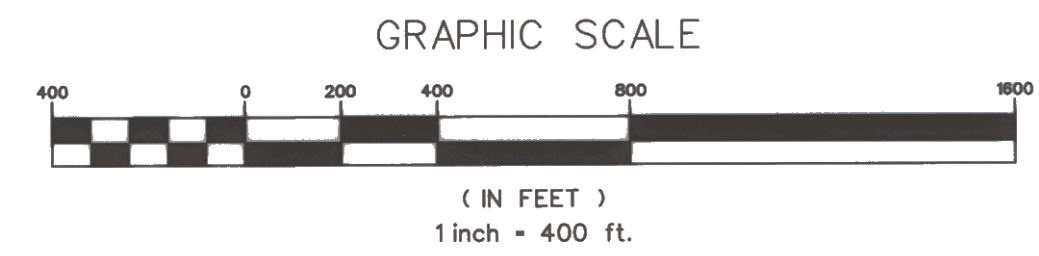


RUNWAY DATA						
RUNWAY	5	-	23	17	-	35
RUNWAY LENGTH	3497'		4022'			5001'
WIDTH	100'		150'			150'
SAFETY AREA WIDTH	150'		150'			500'
TAXIWAY WIDTH						VARIES
SURFACE			BIT CONCRETE			BIT CONCRETE
PAVEMENT STRENGTH	30,000 S/W - 44,000 D/W			30,000 S/W - 44,000 D/W		
RUNWAY LIGHTING			MIRLS			MIRLS
RUNWAY MARKING			VISUAL			PRECISION
EFFECTIVE GRADIENT			0.745%			1.46%
NAV-AIDS			NONE		ILS	VOR
RUNWAY SAFETY AREAS (LENGTH BEYOND THRESHOLD)			300'			1000'
VISUAL AIDS			NONE		MALSR	REILS
RUNWAY END COORDINATES	44° 12' 08.77" N. 72° 33' 56.72" W.		44° 12' 42.31" N. 72° 33' 27.16" W.		44° 12' 23.82" N. 72° 34' 05.84" W.	
					44° 11' 40.15" N. 72° 33' 33.08" W.	



LEGEND	
ITEM	EXISTING
AIRPORT PROPERTY LINE	---
CONTOURS (USGS-MSL) DATUM	160
AIRPORT REFERENCE POINT (A.R.P.)	● ARP
AIRPORT ROTATING BEACON	● RB
BUILDING RESTRICTION LINE (B.R.L.)	---
MARSH/WETLAND	~
WATER COURSE	—
TREELINE/BRUSH	
SAFETY AREA	▨
AIRPORT BUILDINGS/FACILITIES	▩
AUTO PARKING	AS SHOWN
TIEDOWNS	TTTTTTTT
RUNWAY VISIBILITY ZONE	▨
HAZARD BEACON	*
GLIDE SLOPE AND LOCALIZER CRITICAL AREA	▨
LIMITS OF EASEMENTS - AIRRIGHTS	---



AIRPORT FACILITIES	
IDENTIFIER	DESCRIPTION
1	YORK HANGAR
2	VT. FLYING SERVICE-HANGAR *1
3	LANDRY HANGAR
4	PERCEY HANGAR
5	STATE HANGAR
6	VT. FLYING SERVICE-HANGAR *2
7	TERMINAL BUILDING
8	STATE MAINTENANCE GARAGE
9	FUEL FARM AND APRON
10	MAC STEVENS MEMORIAL HANGAR
11	DISTRICT *5 MAINT. ADMIN. & GARAGE
12	DUBOIS "T" HANGARS

AIRPORT DATA		
DESCRIPTION	DATA	
AIRPORT ELEVATION	1185'	
MEAN MAXIMUM TEMP. (HOTTEST MONTH)	26.6 °C	
COMBINED WIND COVERAGE (12 MPH)	96.7%	
MAGNETIC VARIATION	15° 59.3' W (SEPT,1990)	
AIRCRAFT DESIGN GROUP	II	
AIRCRAFT APPROACH SPEED	B	
CRITICAL AIRCRAFT	CESSNA CITATION III	
AIRPORT REFERENCE POINT	LAT.	44° 12' 12" N.
	LONG.	72° 33' 46" W.

EDWARD F. KNAPP STATE AIRPORT
BERLIN, VERMONT

AIRPORT MASTER PLAN UPDATE
EXISTING AIRPORT LAYOUT

URS Greiner
1 NORTHWAY LN.
LATHAM, NEW YORK

Designed by: G.W.D.
Drawn by: AL BEY
Checked by: M.L.C.
Approved by: G.W.D.

Scale: 1"=400'

Date: MAR. 2000

Sheet 20f 9

Sheet No
2