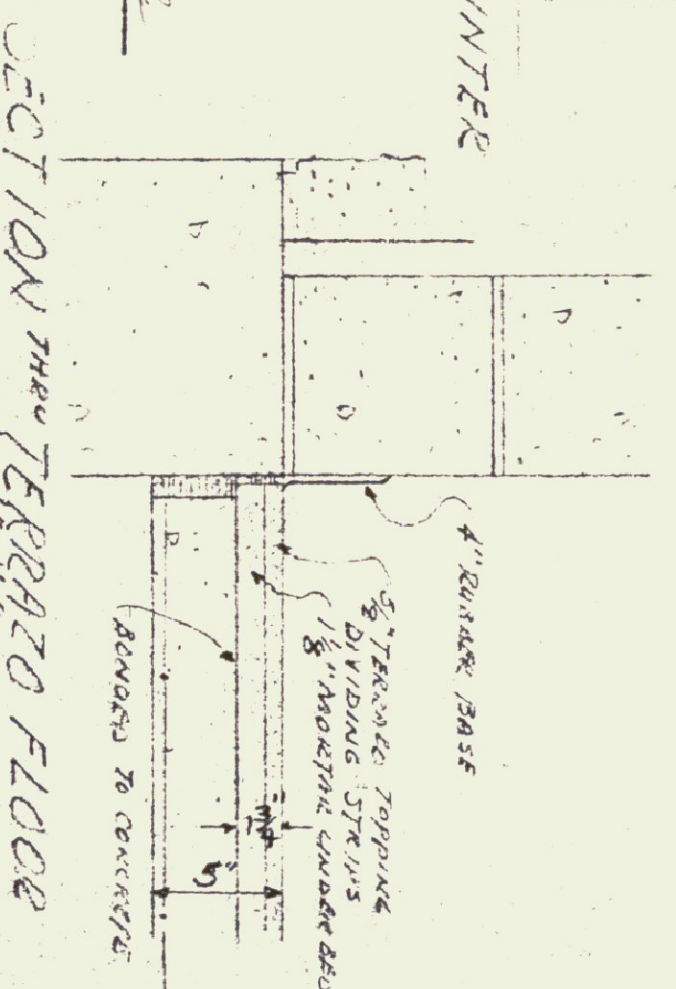
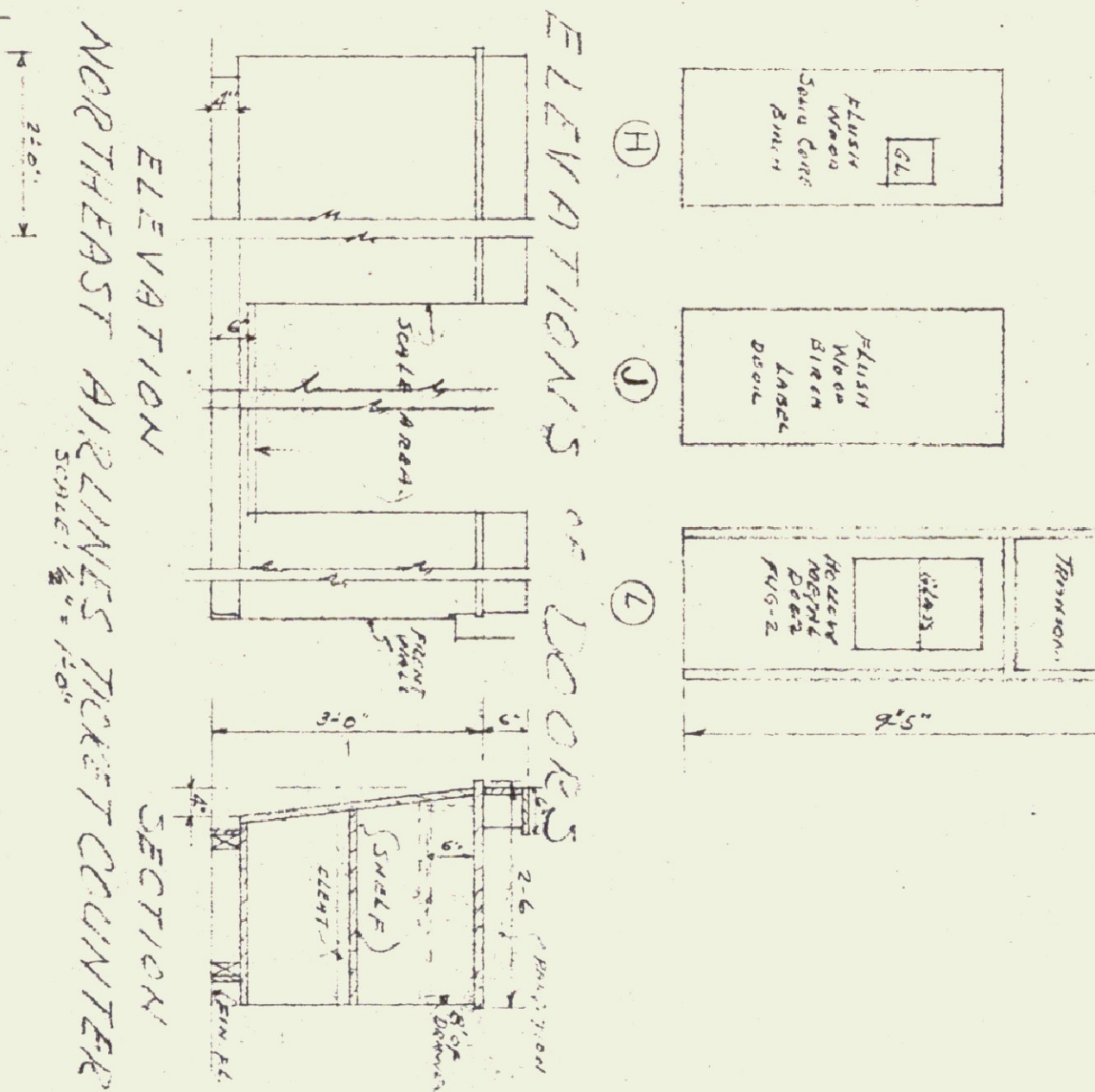
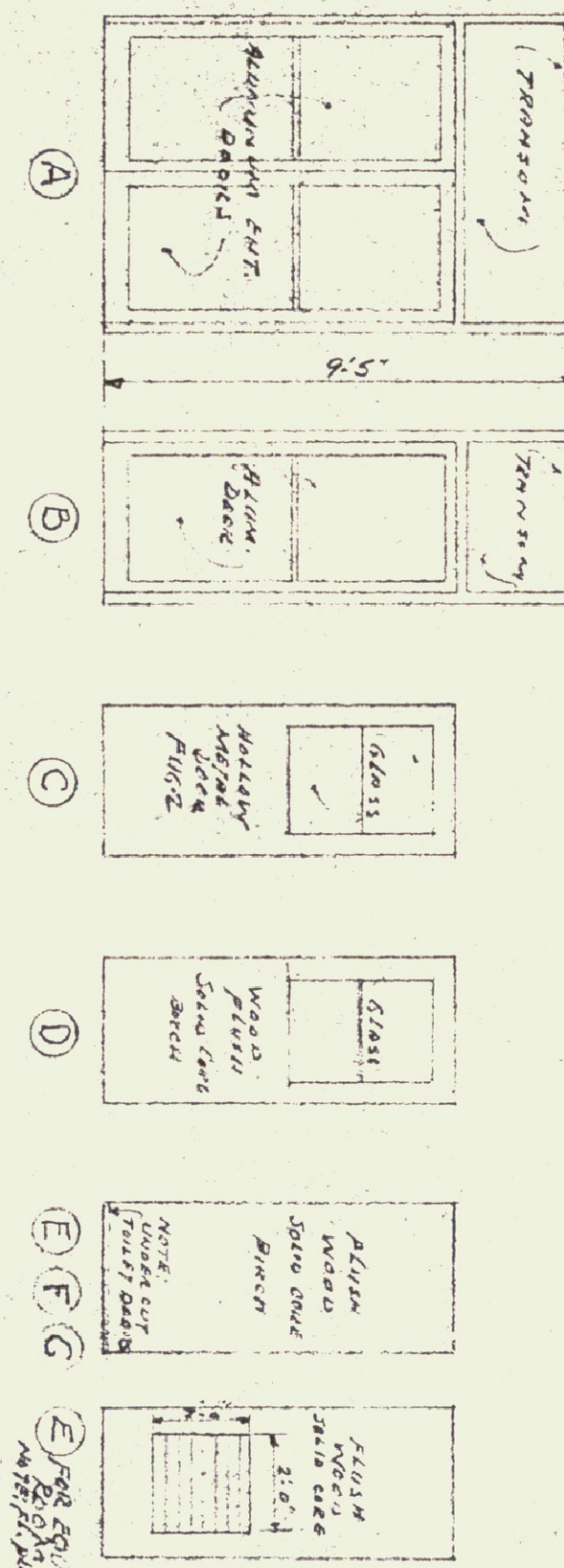


4.1	3/4" x 3/4" L
4.2	SAME HEIGHT & WIDTH AS A CONC. BLOCK - 2" x 4" STRAIGHT BARS
4.3	5" x 2 1/2" L
4.4	SAME AS 4.3
4.5	6" x 6" DETAIL
4.6	2" x 3" x 1/2" L
4.7	WIDTH OF CONC. BLOCK - REFERENCE TO BLOCK 3
4.8	2" x 3" x 1/2" L
4.9	SAME AS 4.2 - REFERENCE TO BLOCK 3

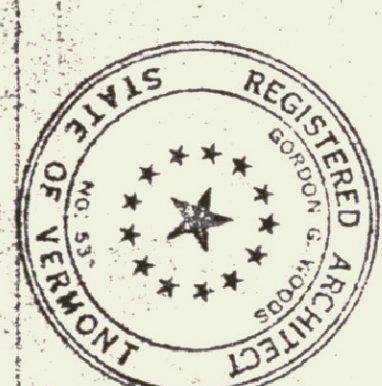
DOOR SCHEDULE FOR FIRST FLOOR

TYPE	SIZE	NO. REQ'D	REMARKS
A	3'-0" x 7'-0" x 1 3/4"	4	ALUMINUM - STEEL ENHANCING BOLTS
B	3'-0" x 7'-0" x 1 3/4"	2	HOLLOW METAL DOOR FRAME
C	3'-0" x 7'-0" x 1 3/4"	1	FLUSH BIRCH - SOLID CORE - GATED
D	3'-0" x 7'-0" x 1 3/4"	1	FLUSH BIRCH - SOLID CORE - GATED
E	3'-0" x 7'-0" x 1 3/4"	1	FLUSH BIRCH - SOLID CORE - GATED
F	2'-6" x 7'-0" x 1 3/4"	3	FLUSH BIRCH - SOLID CORE - GATED
G	2'-6" x 7'-0" x 1 3/4"	2	FLUSH BIRCH - SOLID CORE - GATED
H	3'-0" x 7'-0" x 1 3/4"	1	FLUSH BIRCH - SOLID CORE - GATED
J	3'-0" x 7'-0" x 1 3/4"	1	FLUSH BIRCH - SOLID CORE - GATED
K	3'-0" x 6'-8" x 1 3/4"	1	FLUSH - PAINTED - SUPPLIED WITH ALUMINUM
L	3'-0" x 7'-0" x 1 3/4"	1	MILNER MINE DOOR - 1/2" x 2" GRANITE TRANSMISSION



"AS-CONSTRUCTED" PLANS
I hereby certify that all construction required by this sheet has been accomplished as indicated herein.

Date: 11/3/59
Gordon G. Woods,
Architect



SCHEDULE 2"
NEW TERMINAL BUILDING FOR BAREMONT AIRPORT
GORDON G. WOODS ARCHITECTS & ENGINEERS
ST. JOHNSBURY, VERMONT

CHECKED BY: [Signature]
DRAWN BY: [Signature]
DATE: SEPT 58
DRAWING NO: 2

REVISED 11/3/59