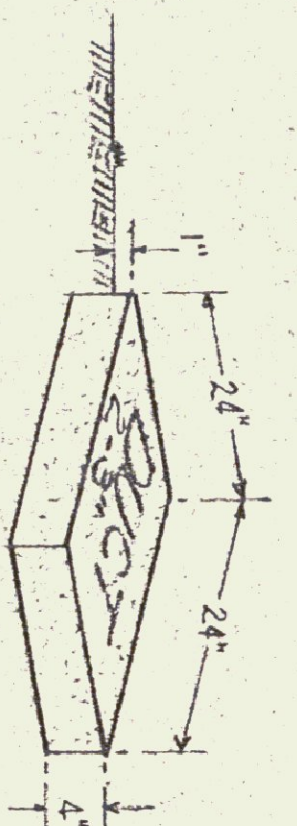
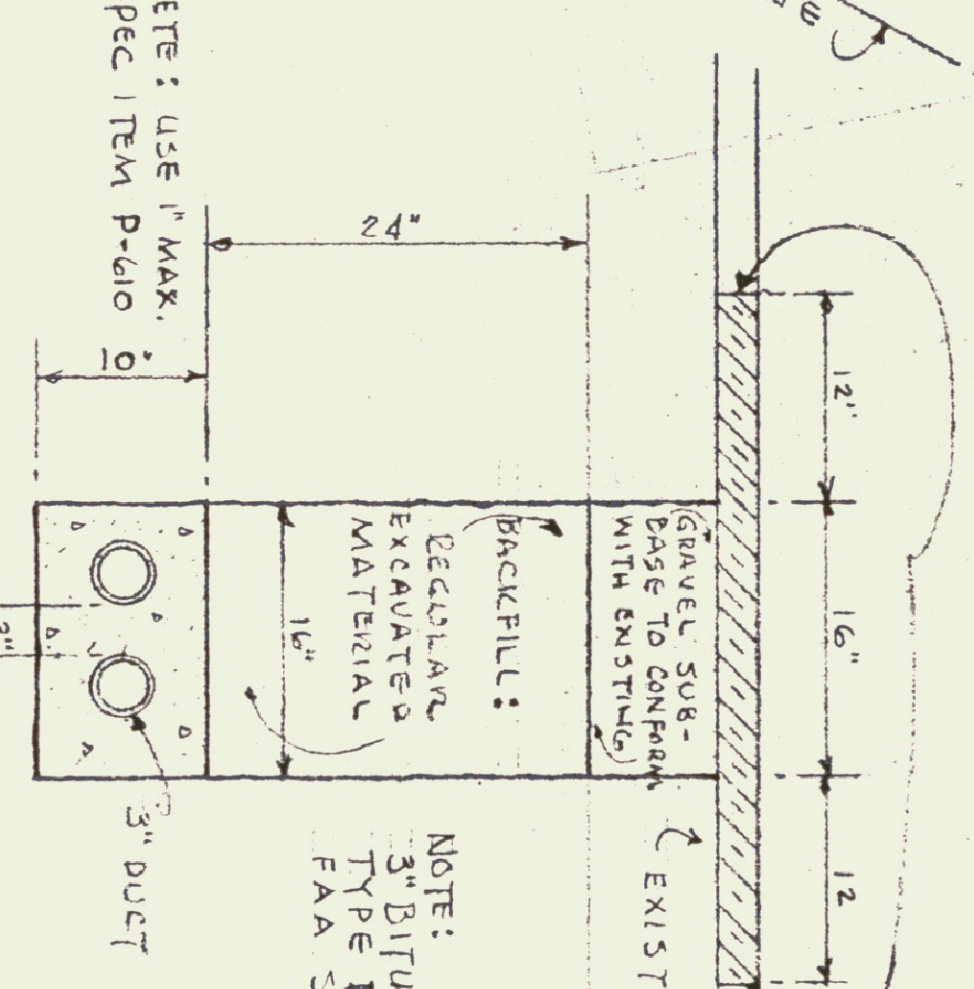


NOTE: GRADE OF TRENCH & CONDUIT TO CONFORM WITH TRANSVERSE GRADES OF RUNWAY - BUT NOT LESS THAN 2" IN 100'.



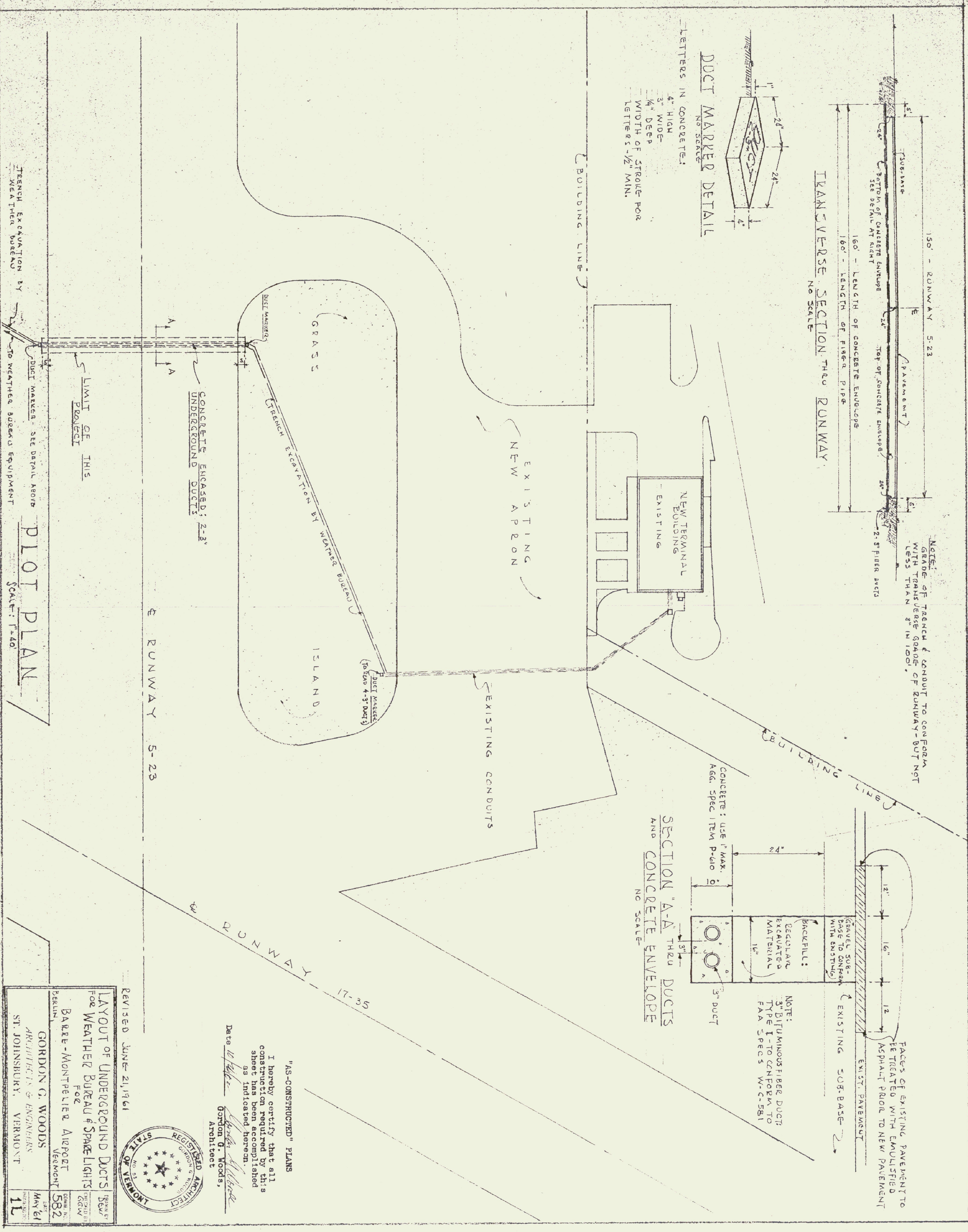
DUCT MARKER DETAIL  
NO SCALE

LETTERS IN CONCRETE:  
4" HIGH  
3" WIDE  
1/4" DEEP  
WIDTH OF STROKE FOR LETTERS - 1/2" MIN.



NOTE: 3" BITUMINOUS FIBER DUCTS TYPE I - TO CONFORM TO FAA SPECS W-C-581

SECTION "A-A" THRU DUCTS AND CONCRETE ENVELOPE  
NO SCALE



TRENCH EXCAVATION BY WEATHER BUREAU EQUIPMENT

PLOT PLAN  
SCALE: 1" = 40'

Revised June 21, 1961

LAYOUT OF UNDERGROUND DUCTS FOR WEATHER BUREAU & SPACE LIGHTS FOR BARKER-MONTPPELLIER AIRPORT VERMONT

GORDON G. WOODS ARCHITECTS & ENGINEERS ST. JOHNSBURY, VERMONT

VERMONT REGISTERED ARCHITECT

NO. 1517

STATE OF VERMONT

RECEIVED BY: BOWEN MAY 61

582

11

"AS-CONSTRUCTED" PLANS

I hereby certify that all construction required by this sheet has been accomplished as indicated herein.

Date: 10/1/61

Gordon G. Woods, Architect