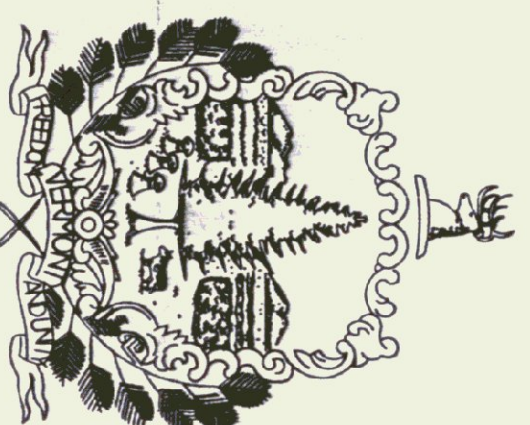


State of Vermont
Department of Buildings & General Services
ADA BATHROOM RENOVATIONS
EDWARD F. KNAPP STATE AIRPORT
Berlin, Vermont

AGENCY OF ADMINISTRATION
DEPT. OF BUILDINGS & GENERAL SERVICES
2 GOVERNOR AIKEN AVENUE
MONTPELIER, VERMONT 05633-5801
THOMAS W. TORTI, COMMISSIONER



James H. Douglas
Governor

April 2003

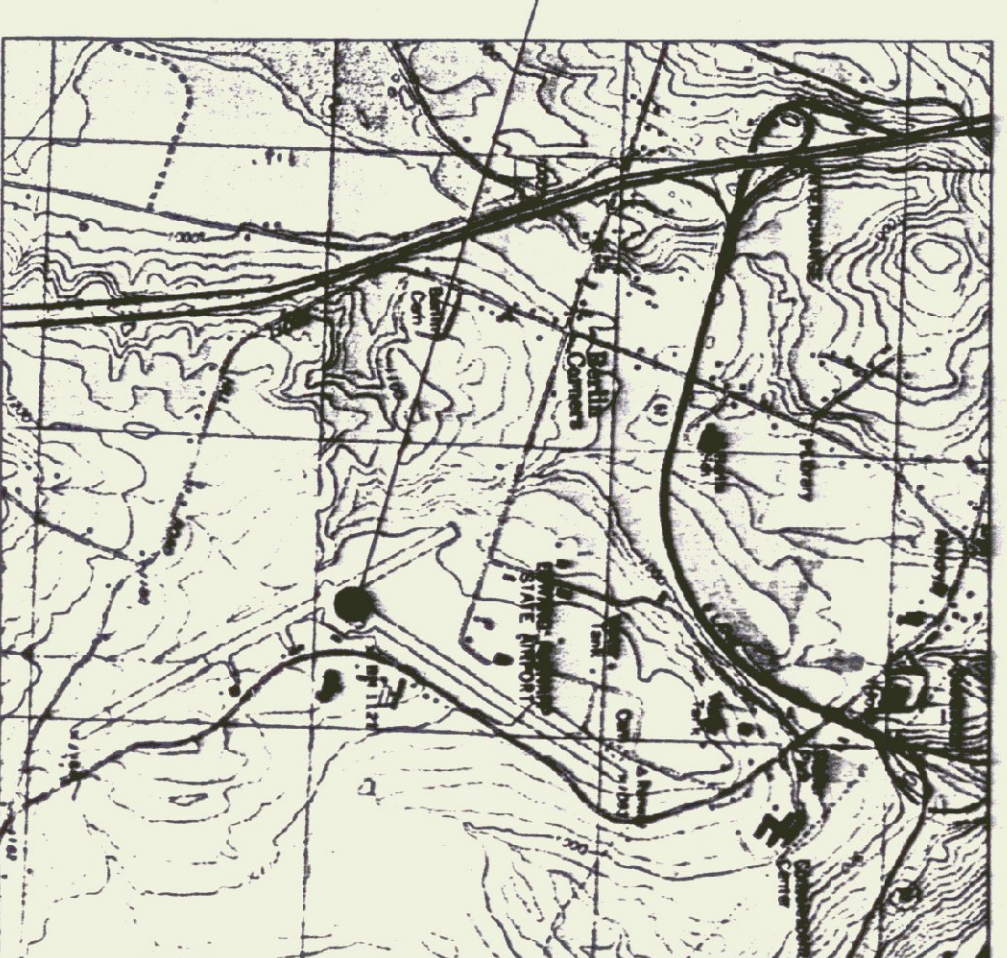
INDEX OF SHEETS
A1 FLOOR PLAN, DETAILS & SCHEDULES

CONSULTANT:

CHARLES E. METZ, ARCHITECT
THE GRIST MILL
BRADFORD, VERMONT 05033

AGENCY OF TRANSPORTATION
NATIONAL LIFE BUILDING
MONTPELIER, VERMONT 05602
PATRICIA McDONALD, SECRETARY

PROJECT
LOCATION



PROJECT LOCATION MAP

