

NEW TOILET FIXTURE - AMERICAN STANDARD # 2108.408 WITH AQUONITE SEAT # 95 OR EQUAL. (SEAT 17" TO 19")

REMOVE EXIST. TOILET FIXTURE PATCH FLOOR + WALL.

NOTE: DASHED LINES INDICATE REMOVAL

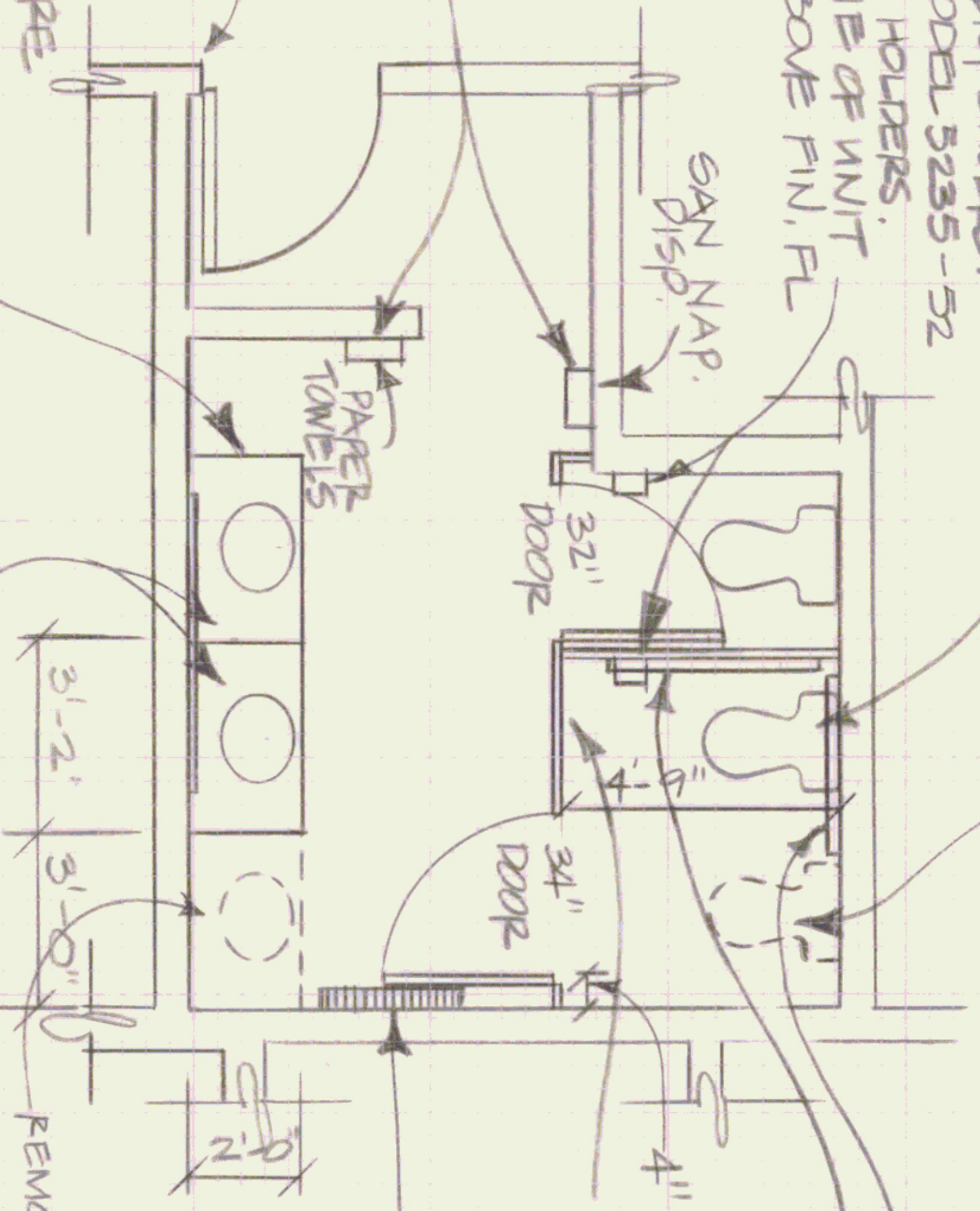
TOILET PAPER DISPENSERS: BRADLEY, MODEL 5235-52 DUAL ROLL HOLDERS. CENTER LINE OF UNIT 19" TO 24" ABOVE FIN. FL

RELOCATE DISPENSERS LOWER EDGE TO BE 40" FROM FLOOR.

WIDEN DOOR OPENING AND INSTALL MIN. 36" DOOR W/FRAME TO MATCH EXIST. REUSE EXISTING DOOR HARDWARE

FINISH OUT ENDS OF COUNTERTOP WITH LAMINATE

INSTALL TWO SAWAGED LAVATORIES AND COUNTERTOP 36" MAX. FROM FIN. FL. PROVIDE 29" KNEE-SPACE FROM COUNTER APRON TO FIN. FL.



1'-36" AND 1'-42" GRAB BAR - BOBRICK # 550 OR EQUAL MOUNTED 33"-36" FROM FIN. FL.

INSTALL NEW TOILET PARTITIONS

RADIATOR

INSTALL 3'-0" x 5'-0" MIPROF, LOWER EDGE TO BE 3'-4" FROM FIN. FL.

REMOVE + PATCH + PRINT THIS WALL.

WOMEN'S ROOM PLAN
SCALE 1/4" = 1'-0"

STATE OF VERMONT		REVISIONS:		WG. NO.	
DEPARTMENT OF STATE BUILDINGS					
AGENCY OF ADMINISTRATION					
MONTPELIER, VERMONT					
KHAPP AIRPORT TERMINAL					
WOMEN'S REST ROOM					
HANDICAPPED MODIFICATIONS					
BERLIN, VERMONT					
DATE:	MARCH 15, 1988	SCALE:	1/4" = 1'-0"		
DRAWN BY:	A. POULIN	APPROVED BY:	F.P.		
				1	OF 2

