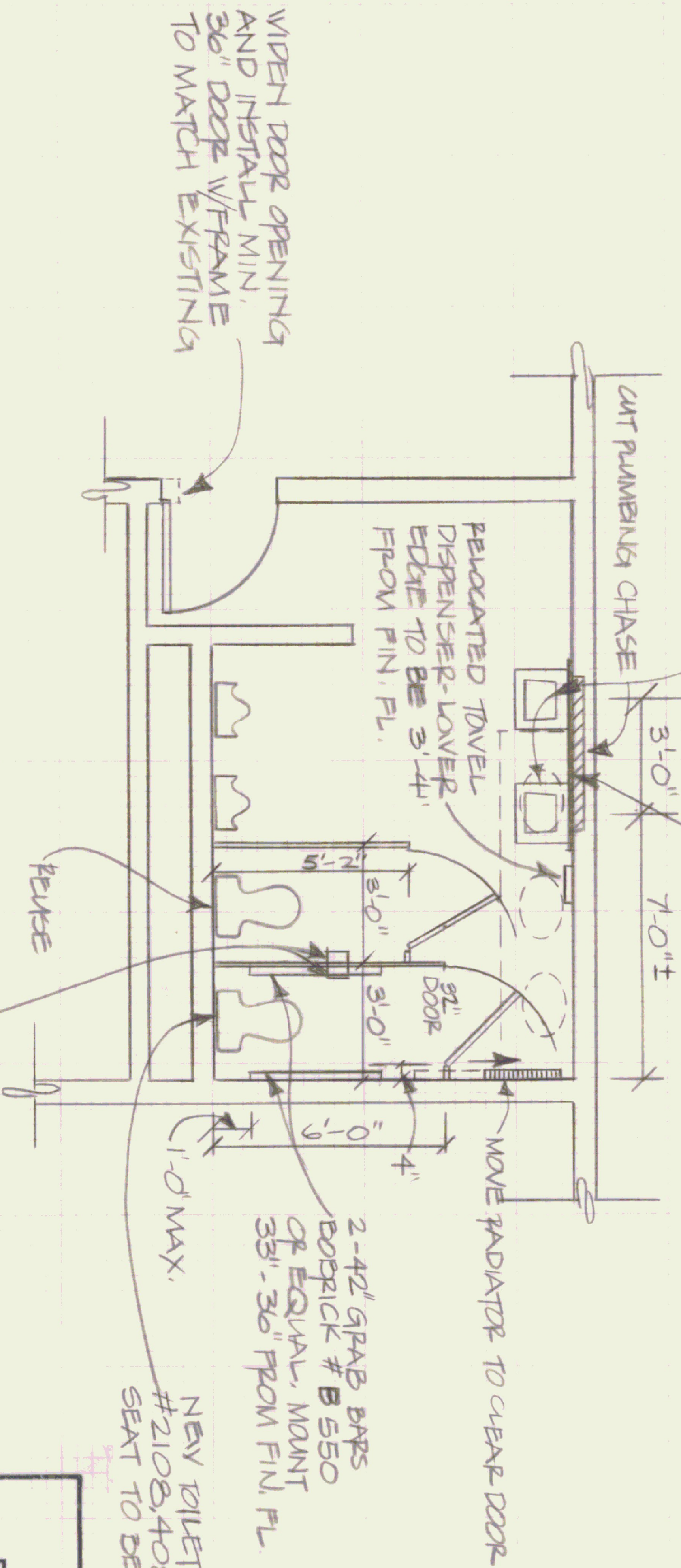


REMOVE THREE EXISTING LAVATORIES AND COUNTERTOP.
 INSTALL TWO NEW WALL HUNG LAVATORIES, AMERICAN
 STANDARD LUCERNE # 0355.012 WITH A.S. FAUCETS
 # 2103.620. 4" CENTER AND A.S. DRAINS # 2411.015.
 MOUNT LAVATORIES WITH CONCEALED ARM HANGERS,
 ZUPRN # 1251.

INSTALL 5'-0" X 3'-0" MIRROR
 LOWER EDGE TO BE
 3'-4" FROM FIN. FL.



WIDEN DOOR OPENING
 AND INSTALL MIN.
 36" DOOR W/FRAME
 TO MATCH EXISTING

MEN'S ROOM PLAN
 1/4" = 1'-0"

NOTE: DASH LINES
 INDICATE REMOVAL

NEW TOILET FIXTURE - AMERICAN STANDARD
 #2108,408 WITH OLSONITE SEAT #95 OR EQUAL
 SEAT TO BE 17" TO 19" ABOVE FIN. FL.

STATE OF VERMONT
 DEPARTMENT OF STATE BUILDINGS
 AGENCY OF ADMINISTRATION
 MONTPELIER, VERMONT

KNAPP AIRPORT TERMINAL
 MEN'S REST ROOM
 HANDICAPPED MODIFICATIONS
 BEPULIN, VERMONT

DATE: MARCH 15, '88	SCALE: 1/4" = 1'-0"	REVISIONS:	WG. NO.
DRAWN BY: A. PAULIN	APPROVED BY: F.P.		2 OF 2