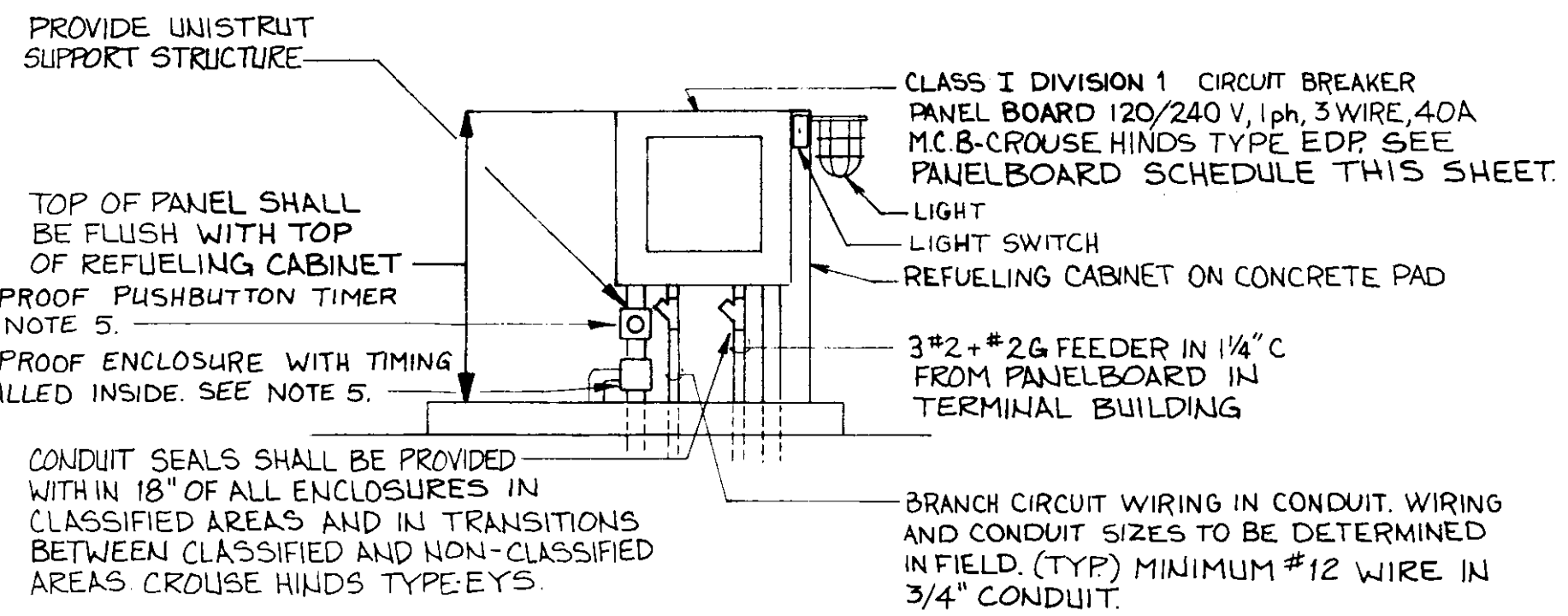
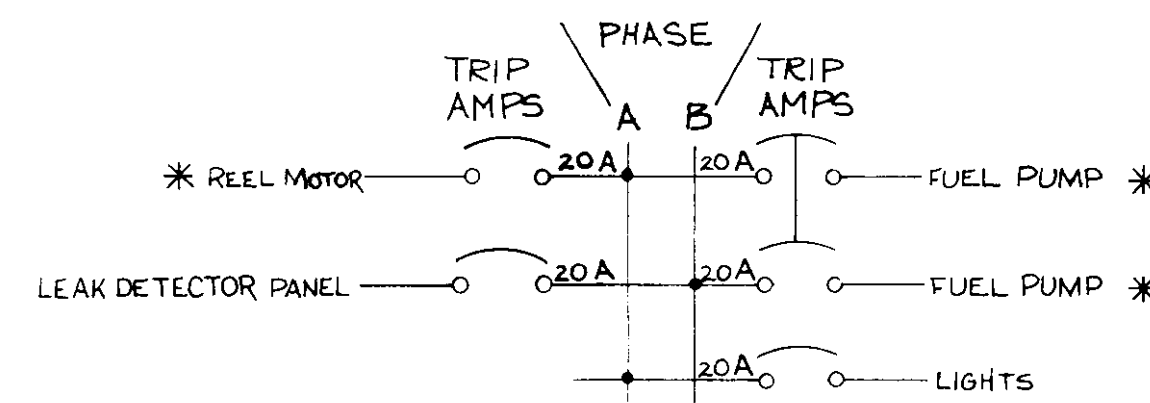


MIDDLEBURY AIRPORT LAYOUT
N.T.S.



1 REFUELING PANEL BOARD
N.T.S.

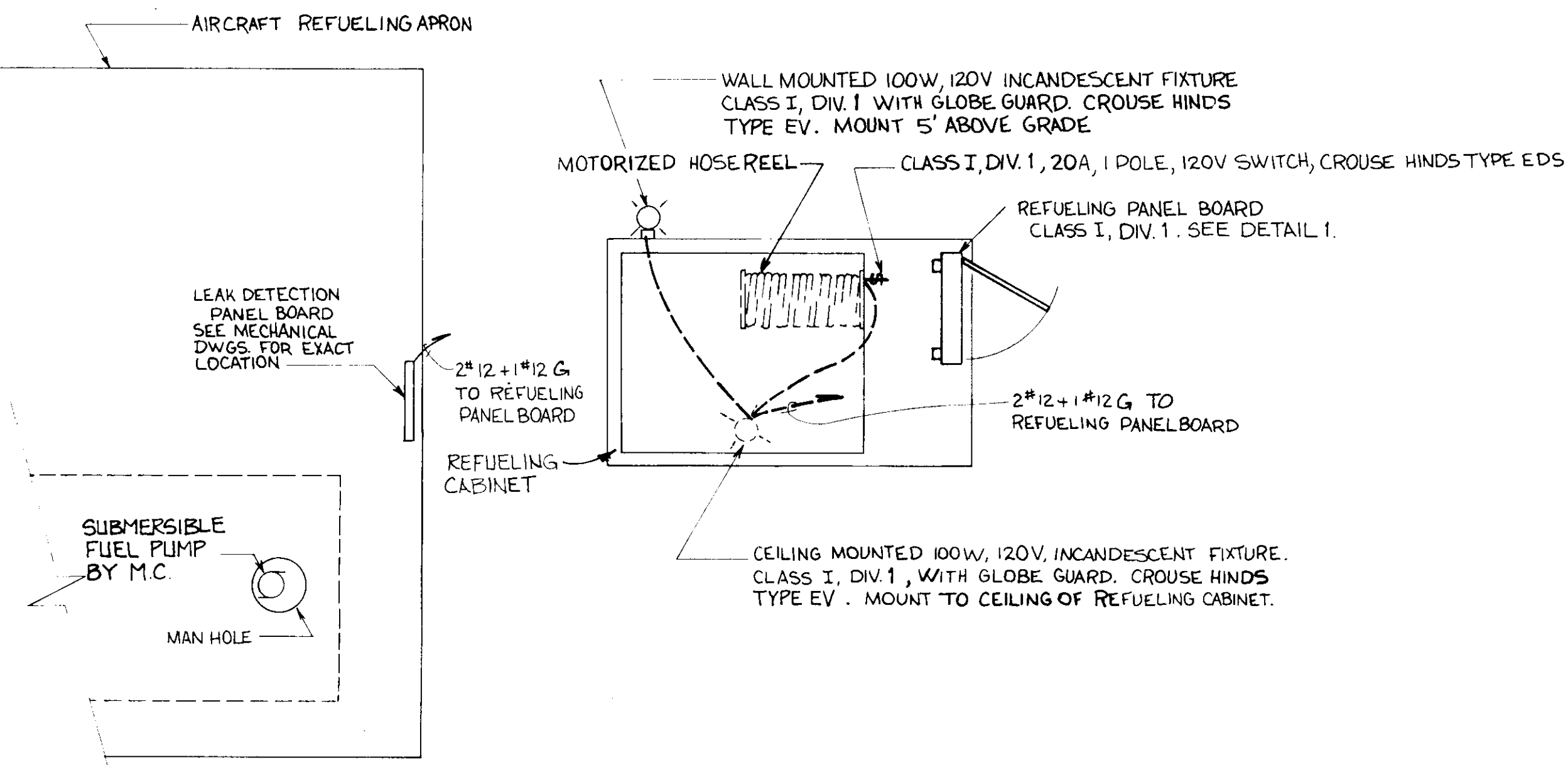


*CIRCUIT BREAKER SIZES SHOWN ARE APPROXIMATE. COORDINATE ACTUAL WIRE AND CIRCUIT BREAKER SIZES WITH MANUFACTURERS RECOMMENDATIONS.

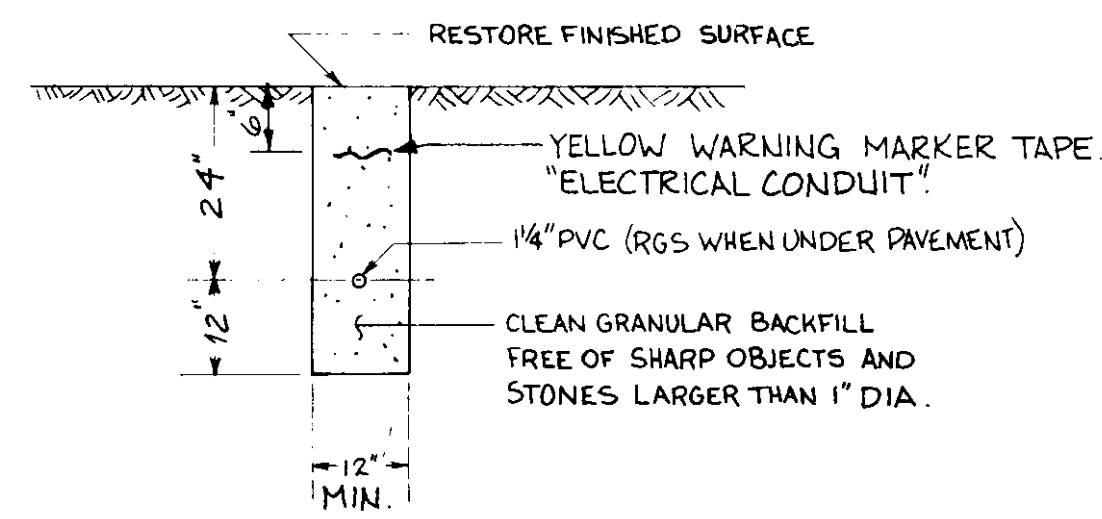
PANEL BOARD SCHEDULE (SEE NOTE 2)
N.T.S.

NOTES:

1. PROVIDE 3#2 + 1#2G IN 1/4" C FROM EXISTING PANELBOARD IN TERMINAL BUILDING TO NEW REFUELING PANELBOARD AT FUEL PUMP SITE. PROVIDE 240V, 2P, 50A, CIRCUIT BREAKER IN EXISTING PANELBOARD FOR FEEDER. CIRCUIT BREAKER SHALL MATCH EXISTING PANELBOARD. APPROXIMATE LENGTH OF RUN IS 700'.
2. VERIFY SPECIFICATIONS FOR FUEL PUMP AND REEL MOTOR. COORDINATE WITH PANELBOARD CIRCUIT BREAKERS BEFORE INSTALLING TO ENSURE PROPER MOTOR & CIRCUIT PROTECTION.
3. PROVIDE ALL NECESSARY POWER AND CONTROL WIRING PER MANUFACTURERS RECOMMENDATIONS AND THE LATEST ISSUE OF THE NATIONAL ELECTRICAL CODE, FOR HOSE REEL MOTOR AND FUEL PUMP MOTOR INSTALLATION. PROVIDE ALL NECESSARY EQUIPMENT (i.e. DISCONNECT SWITCH, OVERLOAD RELAY, FUSES, CONTROL TRANSFORMERS, ETC.) TO INSURE FULL OPERATION OF MOTORIZED EQUIPMENT AND ELECTRICAL DEVICES. FUSES SHALL BE SIZED TO PROTECT MOTOR FROM OVERLOAD AND SHORT CIRCUIT.
4. PROPERLY SEAL AROUND ALL EXTERIOR CONDUIT PENETRATIONS IN BUILDINGS TO ENSURE WATERTIGHT CONDITIONS.
5. PROVIDE UNIVERSAL TIMER, AGISTAT 55FR90, IN 6"x6"x4" D EXPLOSION PROOF ENCLOSURE. TIMER SHALL BE INSTALLED TO ALLOW REFUELING PUMP TO OPERATE ONLY FOR OWNER SPECIFIED TIME INTERVAL. EXPLOSION PROOF PUSHBUTTON RESET SWITCH SHALL BE INSTALLED TO RESET TIMER SO THAT REFUELING PUMP MAY OPERATE FOR SAME OWNER SPECIFIED TIME INTERVAL. COORDINATE RELAY OPERATING VOLTAGE, CONTACT RATING AND PUSHBUTTON WITH REFUELING PUMP CONTROL CIRCUIT. PROVIDE ALL WIRING, CONDUIT, FUSES, CONTROL TRANSFORMER, ETC... AS NECESSARY FOR OPERATION AS SPECIFIED ABOVE. PROVIDE PLASTIC LAMINATED NAMEPLATE EXPLAINING TIMING AND RESET SEQUENCE AND INSTALL PER OWNERS REQUEST.



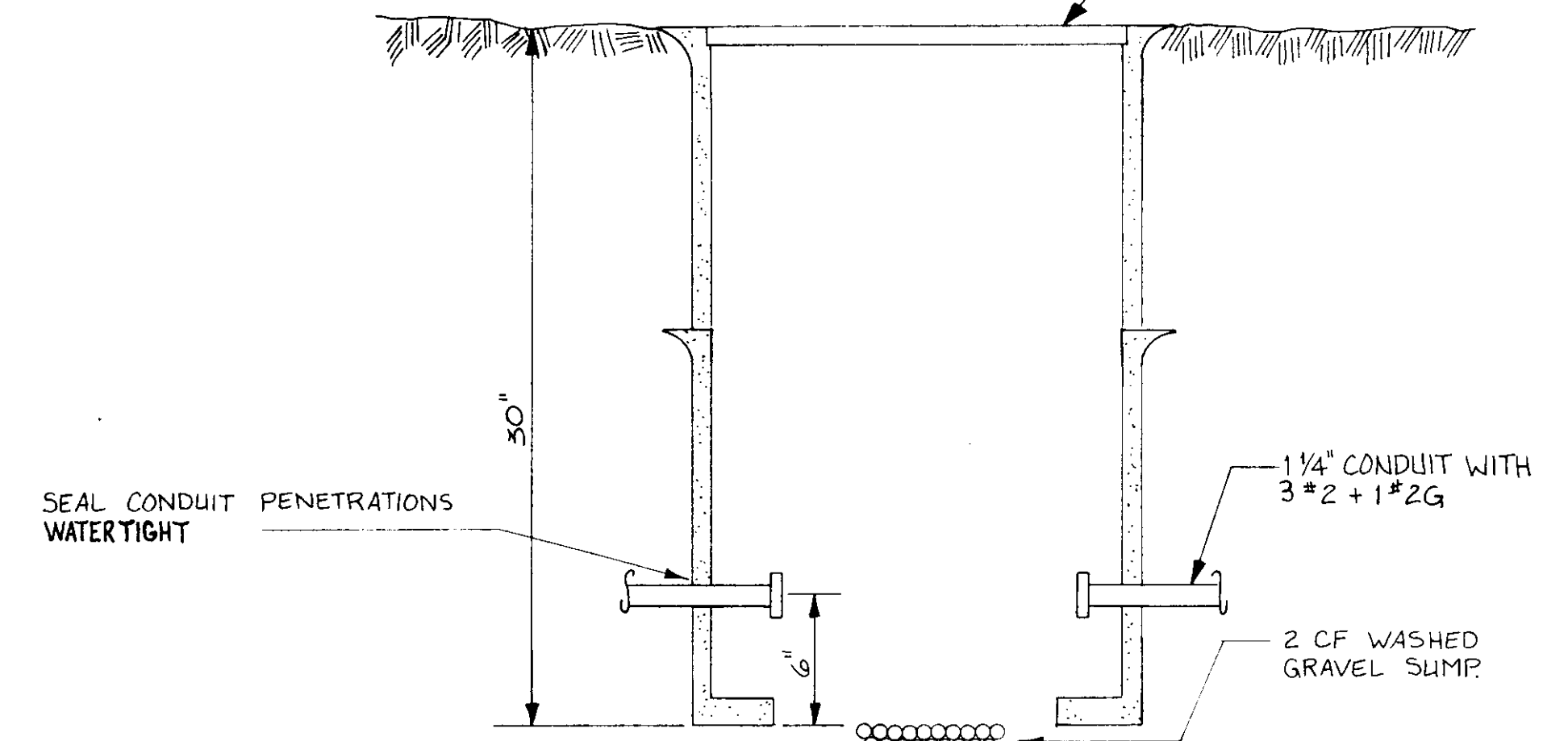
REFUELING CABINET DETAIL
N.T.S.



A E-1 CONDUIT TRENCH
SCALE: 1/2" = 1'-0"

- LEGEND
- \$ LIGHT SWITCH CLASS I... DIV I
 - INCANDESCENT LIGHT FIXTURE CLASS I... DIV. I
 - ⊗ CONCRETE INGROUND PULLBOX

15" x 24" x 30" INGROUND PULLBOX. QUARTZITE "PG" STYLE STACKABLE PULLBOX. STACK AS NECESSARY TO PROVIDE 30" DEPTH. BOND METAL COVER FRAME TO GROUND WIRE.



2 INGROUND PULLBOX
N.T.S.

DATE			ELECTRICAL PLAN	
BY			MIDDLEBURY STATE AIRPORT FUELING SYSTEM	
REVISION		TOWN OF MIDDLEBURY		
DRAWN				
CHECKED				
PROJECT		DATE	SCALE	DWG.
1981-		MAY 1990	AS SHOWN	E-1
				SHEET 10 OF 10