

SUMMARY OF QUANTITIES

| BASE BID               |                                    |       |          |
|------------------------|------------------------------------|-------|----------|
| ITEM NO.               | DESCRIPTION                        | UNITS | QUANTITY |
| 203.17                 | UNCLASSIFIED EXCAVATION            | CY    | 2000.00  |
| 203.26                 | EXCAVATION OF SURFACES & PAVEMENTS | CY    | 1.50     |
| 203.30                 | EARTH BORROW                       | CY    | 1400.00  |
| 203.32                 | GRANULAR BORROW                    | CY    | 2060.00  |
| 203.40                 | FINE GRADING SUBGRADE              | SY    | 3160.00  |
| 204.20                 | TRENCH EXCAVATION                  | CY    | 31.00    |
| 301.26                 | SUBBASE OF CRUSHED STONE           | CY    | 805.00   |
| 404.65                 | EMULSIFIED ASPHALT PRIME COAT      | CWT   | 62.00    |
| 406.25                 | BITUMINOUS CONCRETE PAVEMENT       | TON   | 551.00   |
| 501.30                 | CONCRETE CLASS C                   | CY    | 30.00    |
| 507.15                 | REINFORCING STEEL                  | LB    | 436.00   |
| 601.0015               | 18" C.S.P.                         | LF    | 211.00   |
| 601.6015               | 18" C.S.P.E.S.                     | EA    | 5.00     |
| 604.21                 | PRECAST REINFORCED CONCRETE MH     | EA    | 1.00     |
| 604.51                 | CAST IRON GRATE - TYPE D           | EA    | 1.00     |
| 613.10                 | STONE FILL - TYPE 1                | CY    | 2.00     |
| 635.10                 | MOBILIZATION                       | LS    | 1.00     |
| 649.20                 | GEOTEXTILE FABRIC FOR SILT FENCE   | SY    | 230.00   |
| 651.15                 | SEED                               | LB    | 40.00    |
| 651.18                 | FERTILIZER                         | LB    | 330.00   |
| 651.20                 | AGRICULTURAL LIMESTONE             | TON   | 1.32     |
| 651.25                 | HAY MULCH                          | TON   | 1.32     |
| 651.35                 | TOPSOIL                            | CY    | 180.00   |
| 875.00                 | JOINT SEALANT - FUEL RESISTANT     | GAL   | 5.00     |
| 1000.00                | EXISTING TANK REMOVAL AND BACKFILL | LS    | 1.00     |
| 1001.00                | PROPOSED TANK INSTALLATION         | LS    | 1.00     |
| 1002.00                | AVIATION FUELING CABINET           | LS    | 1.00     |
| 1003.00                | PIPING & VALVE SUPPORTS            | LS    | 1.00     |
| 1004.00                | BALLAST & SURFACE PADS             | LF    | 700.00   |
| 1005.00                | LEAK DETECTION SYSTEM              | LS    | 1.00     |
| 1006.00                | TANK TESTING & START UP            | EA    | 1.00     |
| 1007.00                | TRENCHING AND ELECTRICAL CONDUITS  | LS    | 1.00     |
| 1008.00                | EXPLOSION PROOF PANEL BOARD        | LS    | 1.00     |
| 1009.00                | ELECTRICAL EQUIPMENT               | LS    | 1.00     |
| -----                  |                                    |       |          |
| ADDITIVE ALTERNATIVE 1 |                                    |       |          |
| 203.28                 | EXCAVATION OF SURFACES & PAVEMENTS | CY    | 1.00     |
| 404.25                 | BITUMINOUS CONCRETE PAVEMENT       | TON   | 114.00   |
| 404.65                 | EMULSIFIED ASPHALT                 | CWT   | 32.00    |

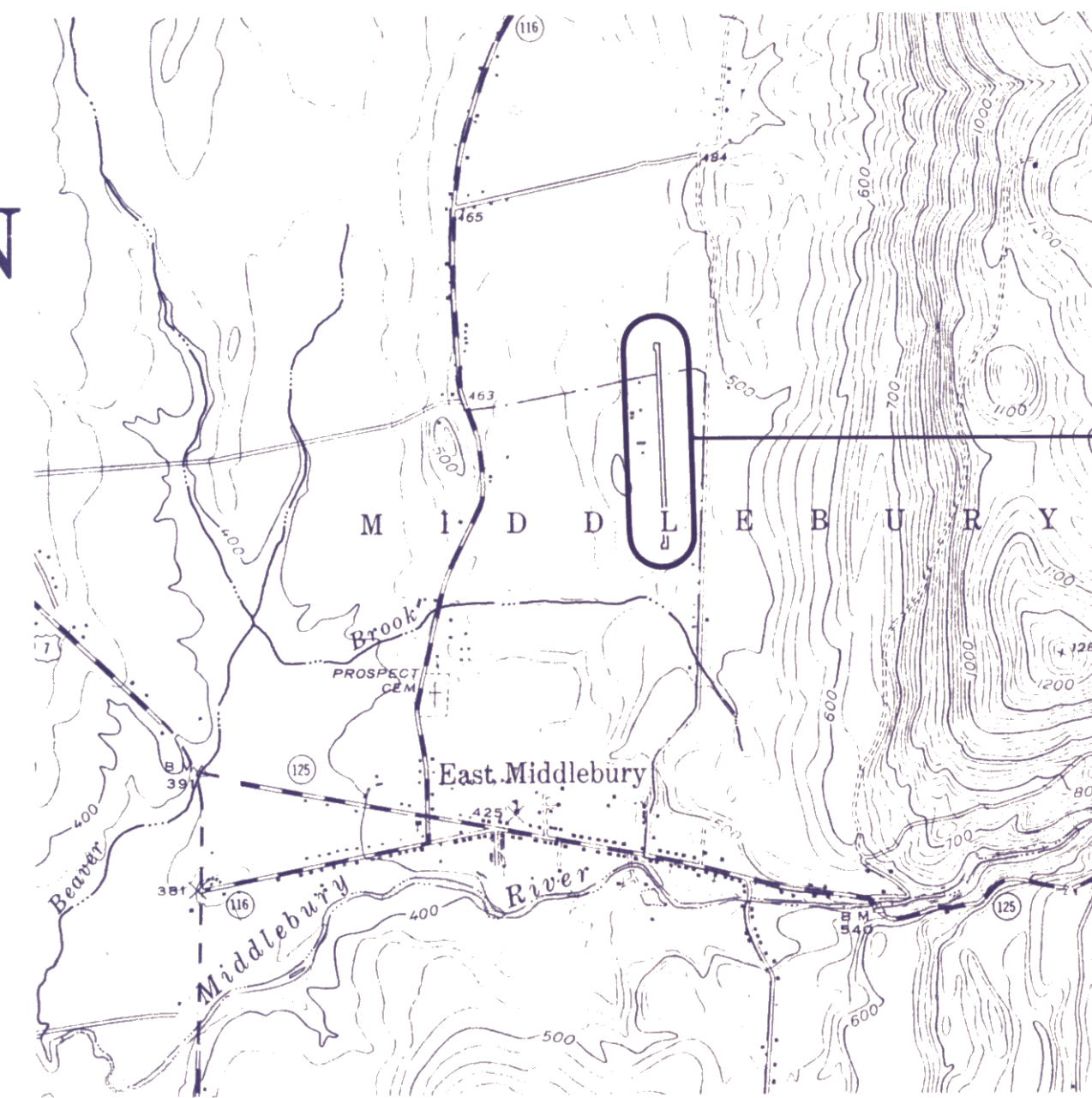
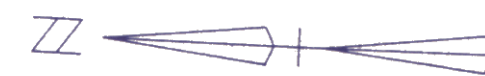
STATE OF VERMONT  
AGENCY OF TRANSPORTATION



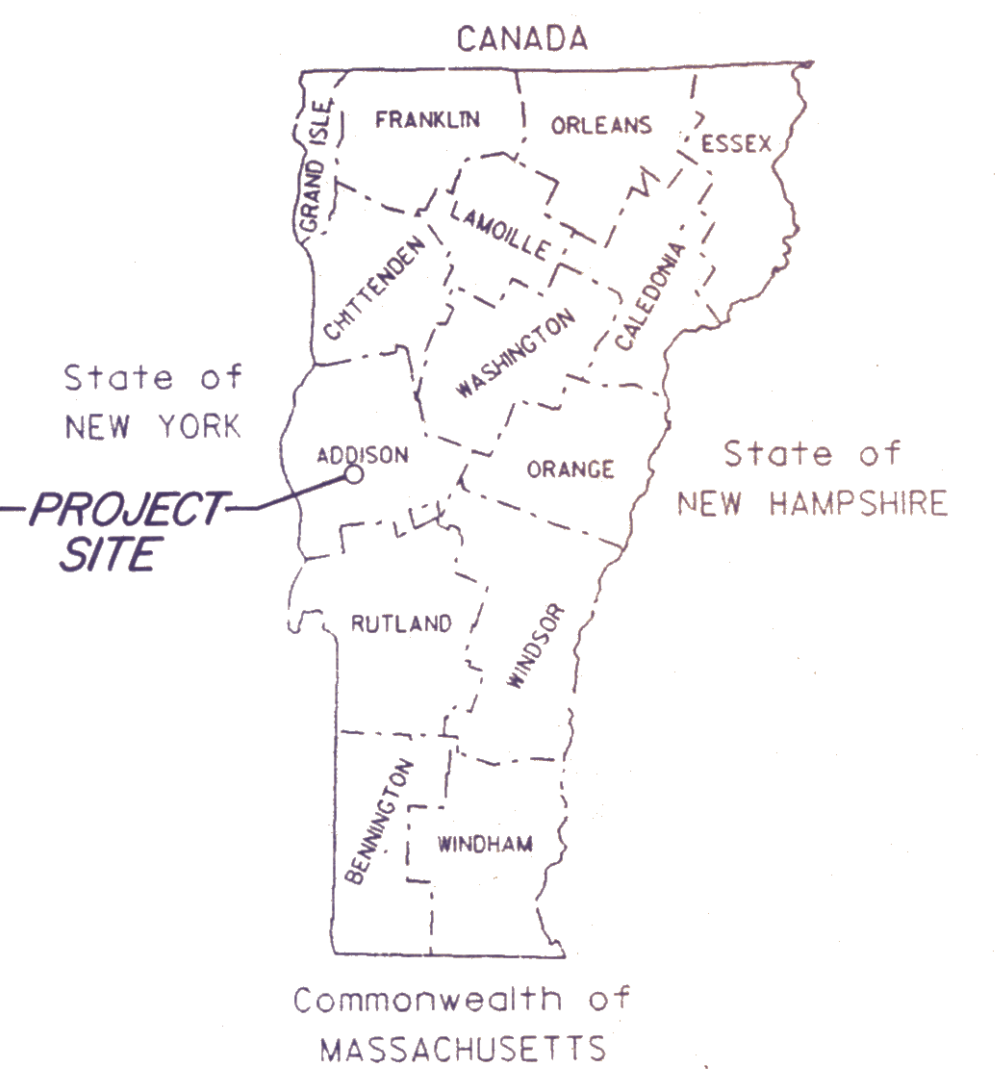
PROPOSED IMPROVEMENT  
TOWN OF MIDDLEBURY  
COUNTY OF ADDISON

MIDDLEBURY STATE AIRPORT  
AVGAS FUELING SYSTEM

AIR 03-2069  
JULY 1990

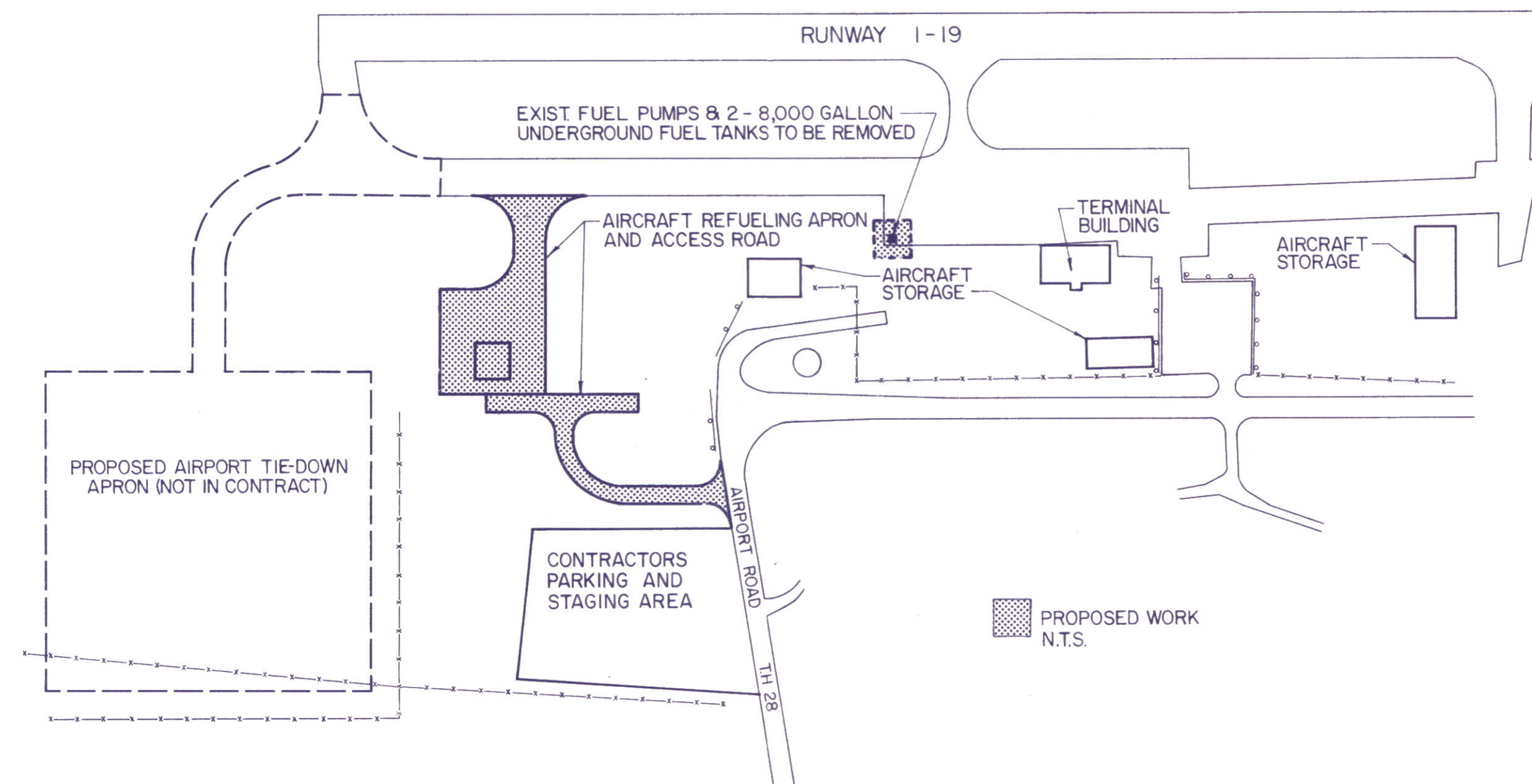


1" = 2000'



LEGEND

- BORING LOCATION
- EXISTING CONTOURS
- PROP CORRUGATED STEEL PIPE (C.S.P)
- C.S.P END SECTION (V.A.O.T. STANDARD D-4)
- STONE FILL OUTLET PROTECTION



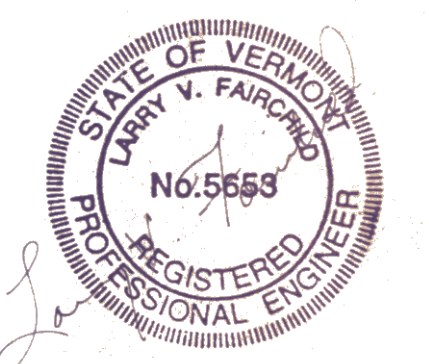
INDEX OF SHEETS

| TITLE                           | DATE      | DRAWING NO. |
|---------------------------------|-----------|-------------|
| TITLE SHEET                     | JULY 1990 | -           |
| SITE PLAN                       | JULY 1990 | SP-1        |
| SITE PLAN                       | JULY 1990 | SP-2        |
| TYPICAL SECTIONS                | JULY 1990 | TS-1        |
| PROFILES                        | JULY 1990 | PF-1        |
| DETAILS                         | JULY 1990 | D-1         |
| APRON CROSS SECTIONS            | JULY 1990 | CS-1        |
| ACCESS ROAD CROSS SECTIONS      | JULY 1990 | CS-2        |
| TANK AND REFUELING CABINET PLAN | JULY 1990 | M-1         |
| ELECTRICAL PLAN                 | JULY 1990 | E-1         |



CLOUGH, HARBOUR & ASSOCIATES  
ENGINEERS & PLANNERS

C.H.A. PROJECT NO. 1981-03



| REV. NO. | DATE | DESCRIPTION | REV. NO. | DATE | DESCRIPTION |
|----------|------|-------------|----------|------|-------------|
|          |      |             |          |      |             |
|          |      |             |          |      |             |
|          |      |             |          |      |             |
|          |      |             |          |      |             |