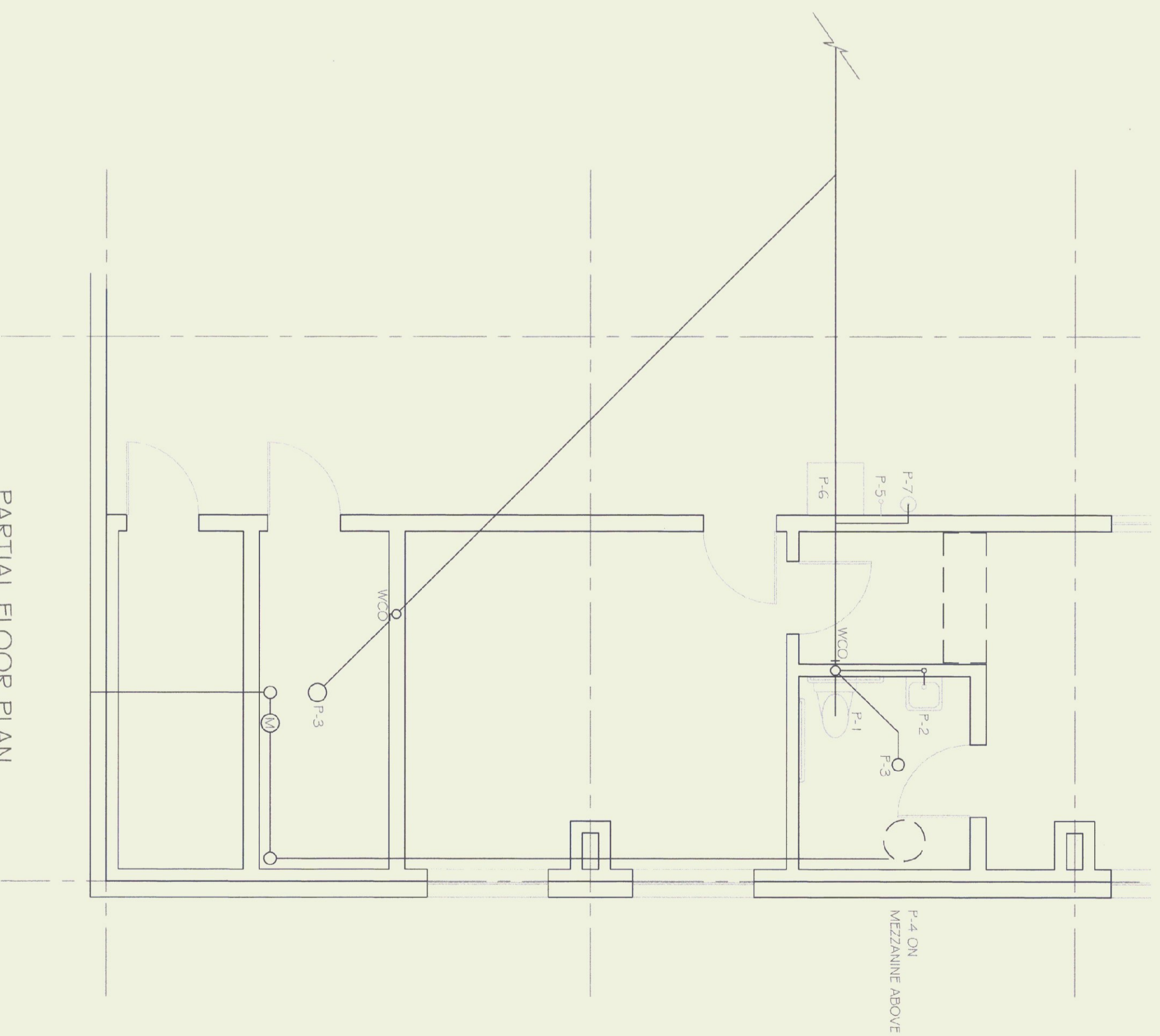
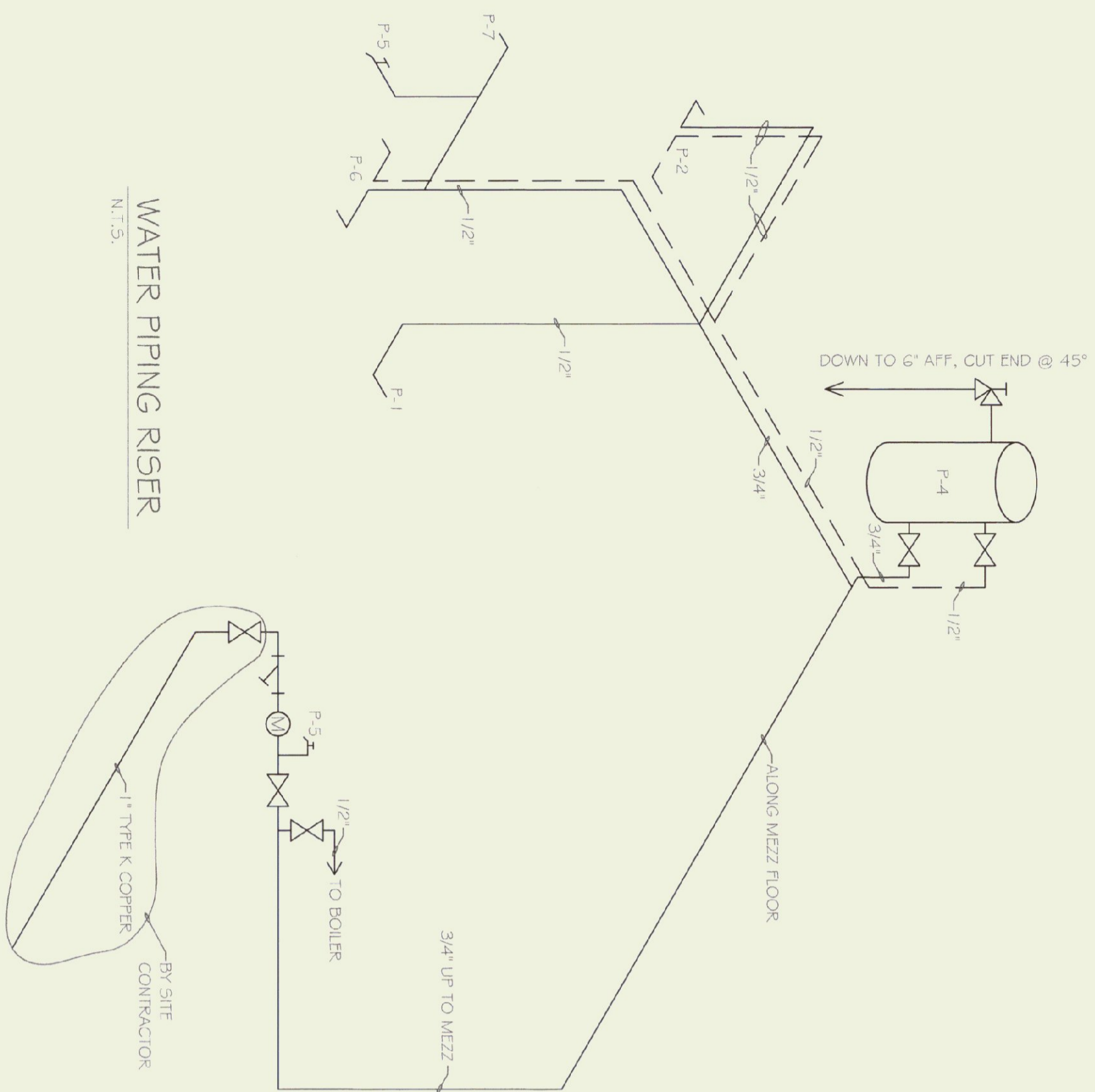


FLOOR PLAN
SCALE: 1/8" = 1'-0"



PARTIAL FLOOR PLAN
SCALE: 1/4" = 1'-0"

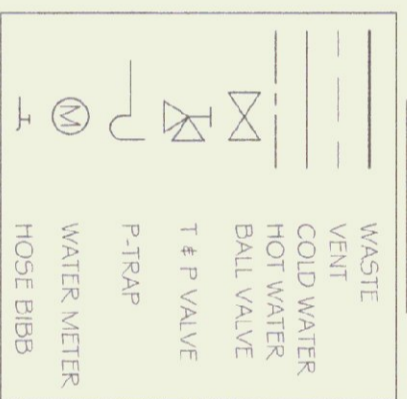


WATER PIPING RISER
N.T.S.

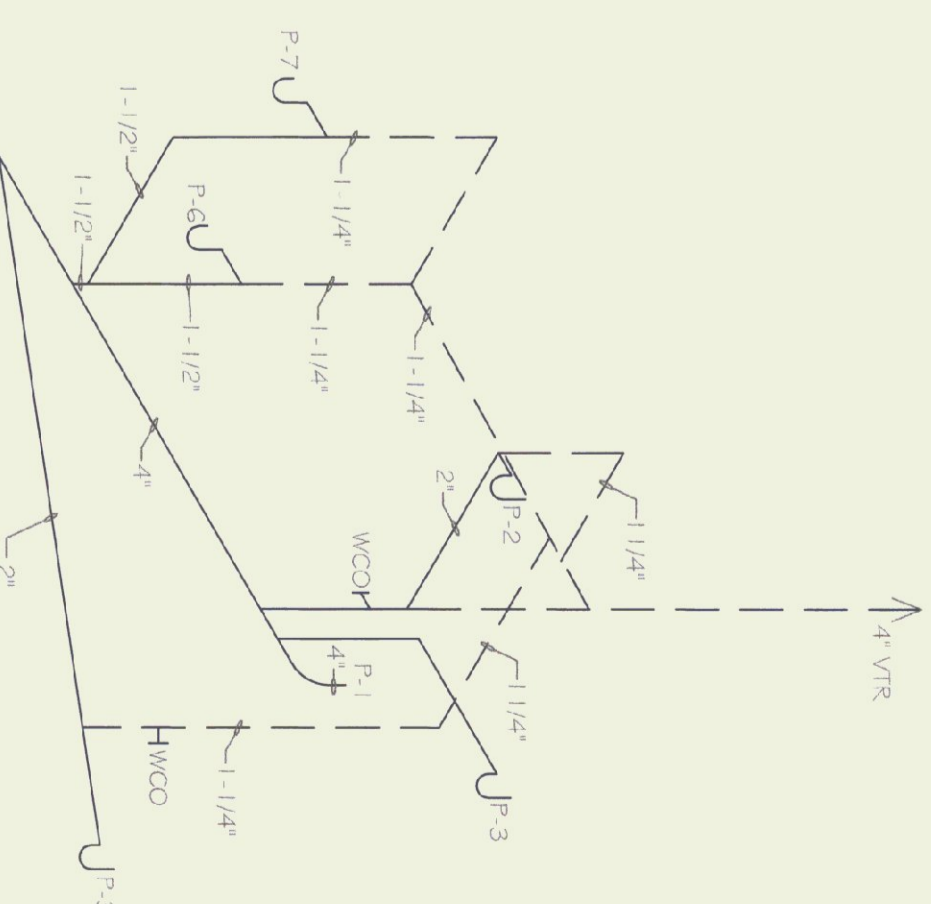
FIXTURE SCHEDULE

SYMBOL	FIXTURE	DESCRIPTION	CW	HW	WASTE	VENT	REMI
P-1	TOILET	AMERICAN STANDARD TOILET # 2158 100 WHITE VITREOUS CHINA HANDBICAP FLOOR MOUNT TANK TYPE PRESSURE ASSISTED ELONGATED WATERSEWER OPEN FRONT WITH BOLL GNS, KROVIDE SUPPLY SHDN.	1/2"	---	4"	4" VTR	---
P-2	WAVATORY	AMERICAN STANDARD TOILET # 032 1 026 WALL HUNG, WHITE VITREOUS CHINA FRONT OVERFLOW, 4" CENTER FLOOR HOLES, TITINGS SHALL BE STANDARD RELINT # 4 MODEL # 2395 000	1/2"	1/2"	2"	1-1/4"	---
P-3	FLOOR DRAIN	SLOTTED ROUND COVER, DRAIN SHALL DISCHARGE THROUGH A P TRAP OUTLET OF P TRAP SHALL HAVE A TWO INCH DRAIN WITH INTEGRAL FLOOR CLEANOUT	---	---	---	1-1/4"	---
P-4	WATER HEATER	BRANDFORD WHITE 6 GALLON ELECTRIC M-LU555	3/4"	1/2"	---	---	---
P-5	HOSE BIBB	MATTS SR-1 WEG&L VACUUM BREAKER	1/2"	---	---	---	---
P-6	LAUNDRY TUB	1/2" 1 1/2" WALL HUNG, WESTERNER # FUD55, FAUCET: AMERICAN STANDARD RELINT # 4 MODEL # 2395 000	1/2"	1/2"	1-1/2"	1-1/2"	---
P-7	SPRINKLER	GARDIAN EQUIPMENT # G1814 STAINLESS STEEL BOWL WITH WALL MOUNTING BRACKET	1/2"	---	1-1/2"	1-1/2"	---

LEGEND



WASTE RISER DIAGRAM
N.T.S.



MIDDLEBURY STATE AIRPORT
NEW HANGER BUILDING
PLUMBING PLAN & DETAILS



STATE OF VERMONT
Department of Buildings
and General Services
Agency of Administration
Montpelier, Vermont



OF #
P-1A

MIDDLEBURY STATE AIRPORT NEW HANGER BUILDING PLUMBING PLANS & DETAILS

SCALE: AS NOTED
DATE: OCTOBER 2002
DRAWN BY: N. HERSEY
APPR. BY: TEIGH

REVISIONS

MIDDLEBURY, VERMONT