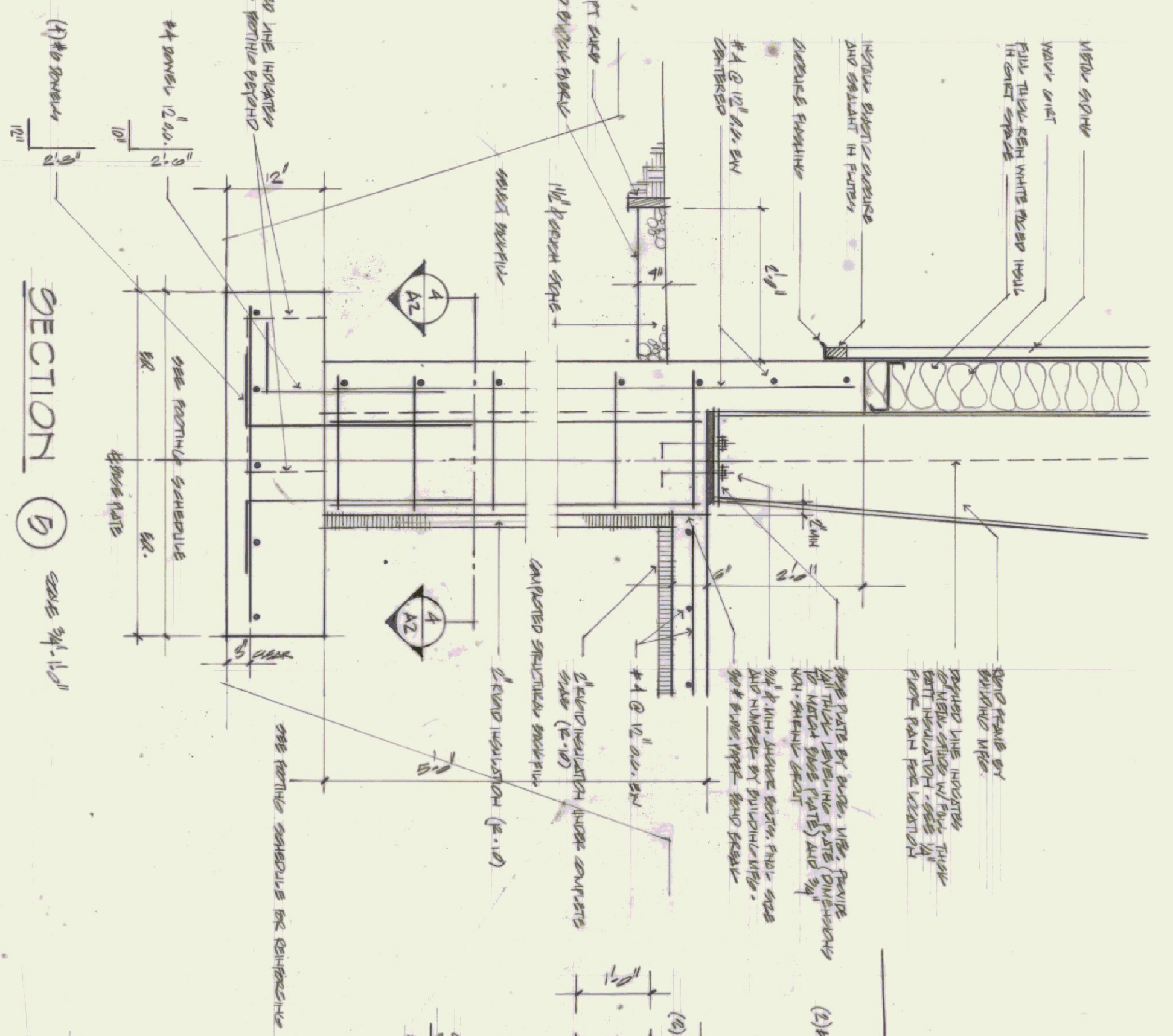


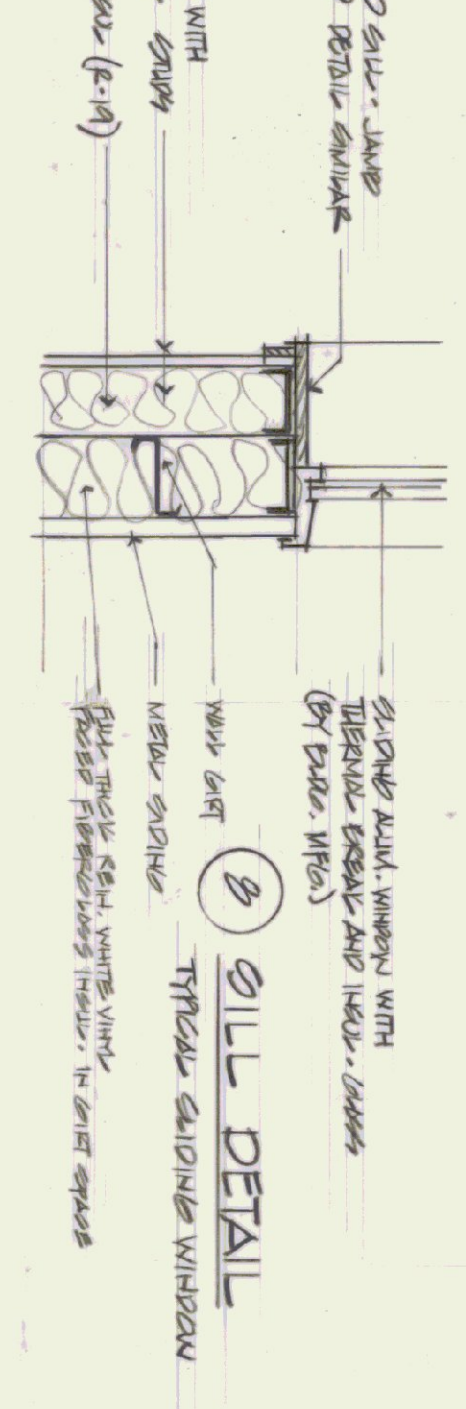
MARK	FOOTING	SCHEDULE	REMARKS
F1	24" x 24" x 12' 0"	#4 @ 12" ON CENTER	
F2	24" x 24" x 12' 0"	#4 @ 12" ON CENTER	

NOTE
 THE FOUNDATION DESIGN SHOWN ASSUMES TYPICAL FOUNDATION LOADS FROM A STEEL FRAME WOOD JOISTING OF THE TYPE AND SIZE, LOADS, PER. AND BENTON. THESE MAY HAVE TO BE REVISED WHEN THE CONTRACTOR SUBMITTALS DEVELOP. IF FOUND THAT THE CONTRACTOR IS REVISIONS OR FOUNDATION DESIGN SHOWS THIS PLAN DESIGN LOADS EXCEEDS ALLOWED IN BENTON. PER. AND FOUNDATION DESIGN.

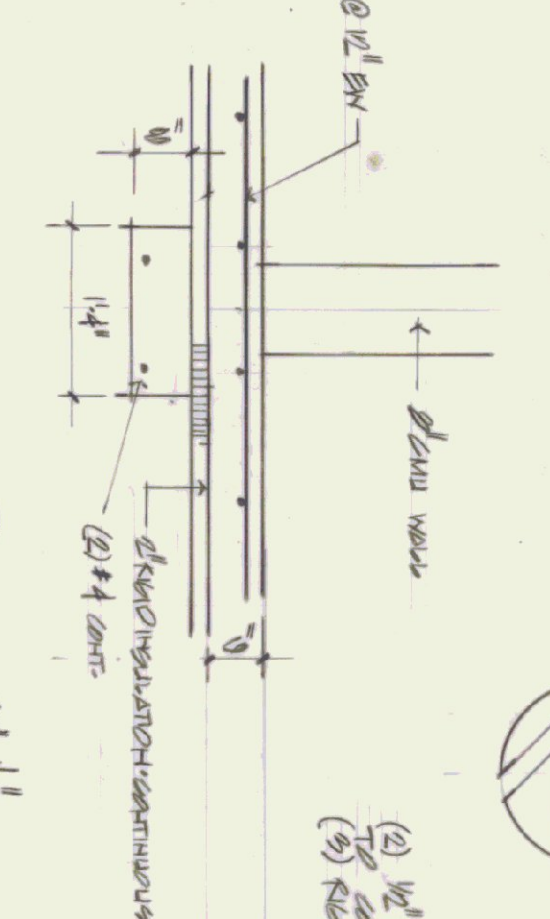
FOUNDATION PLAN scale 1/8" = 1'-0"



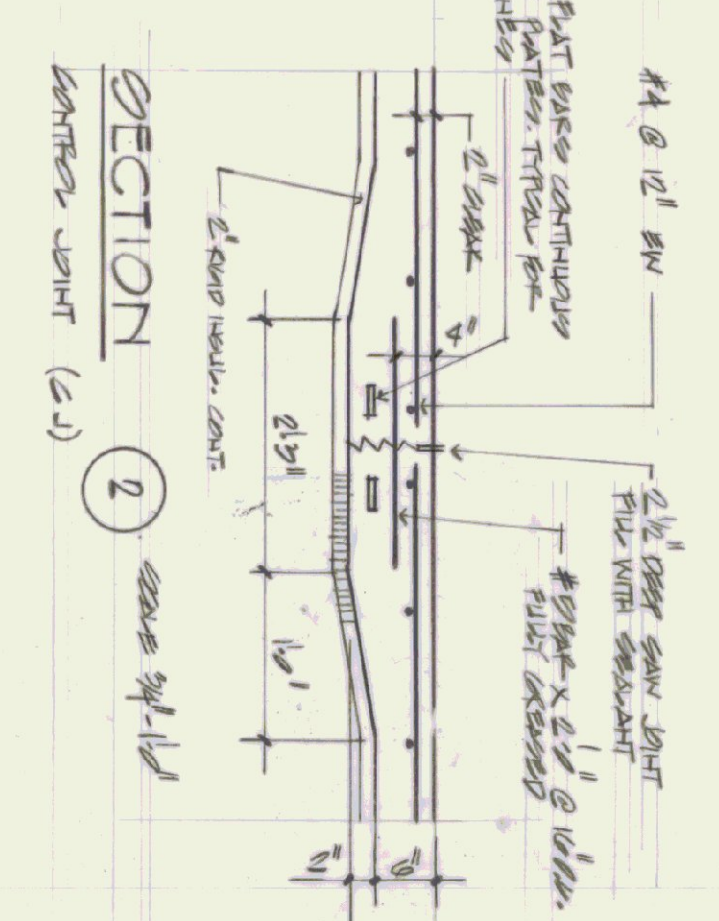
SECTION 5 scale 3/4" = 1'-0"



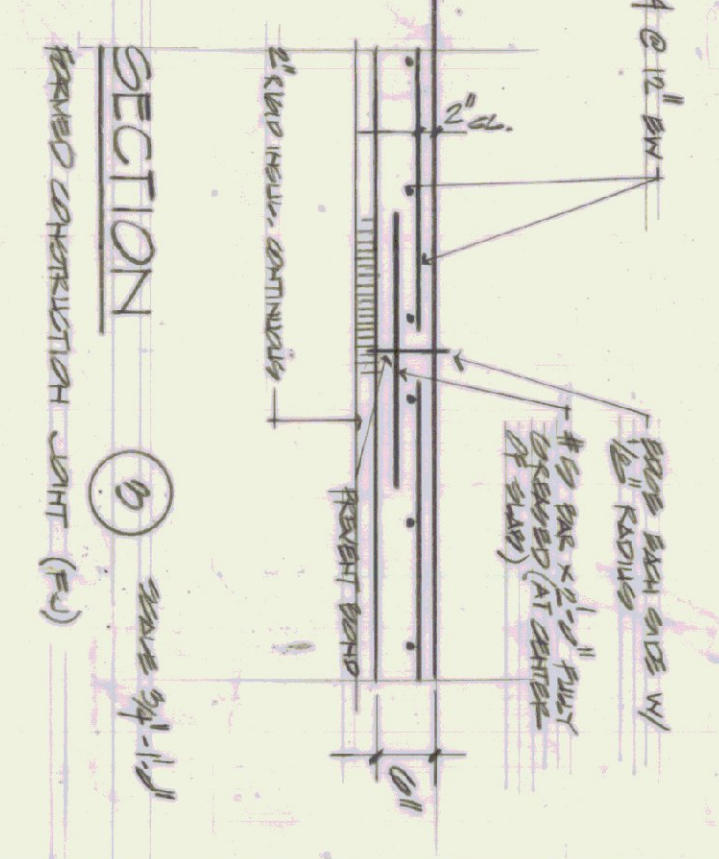
SECTION 2 scale 3/4" = 1'-0"



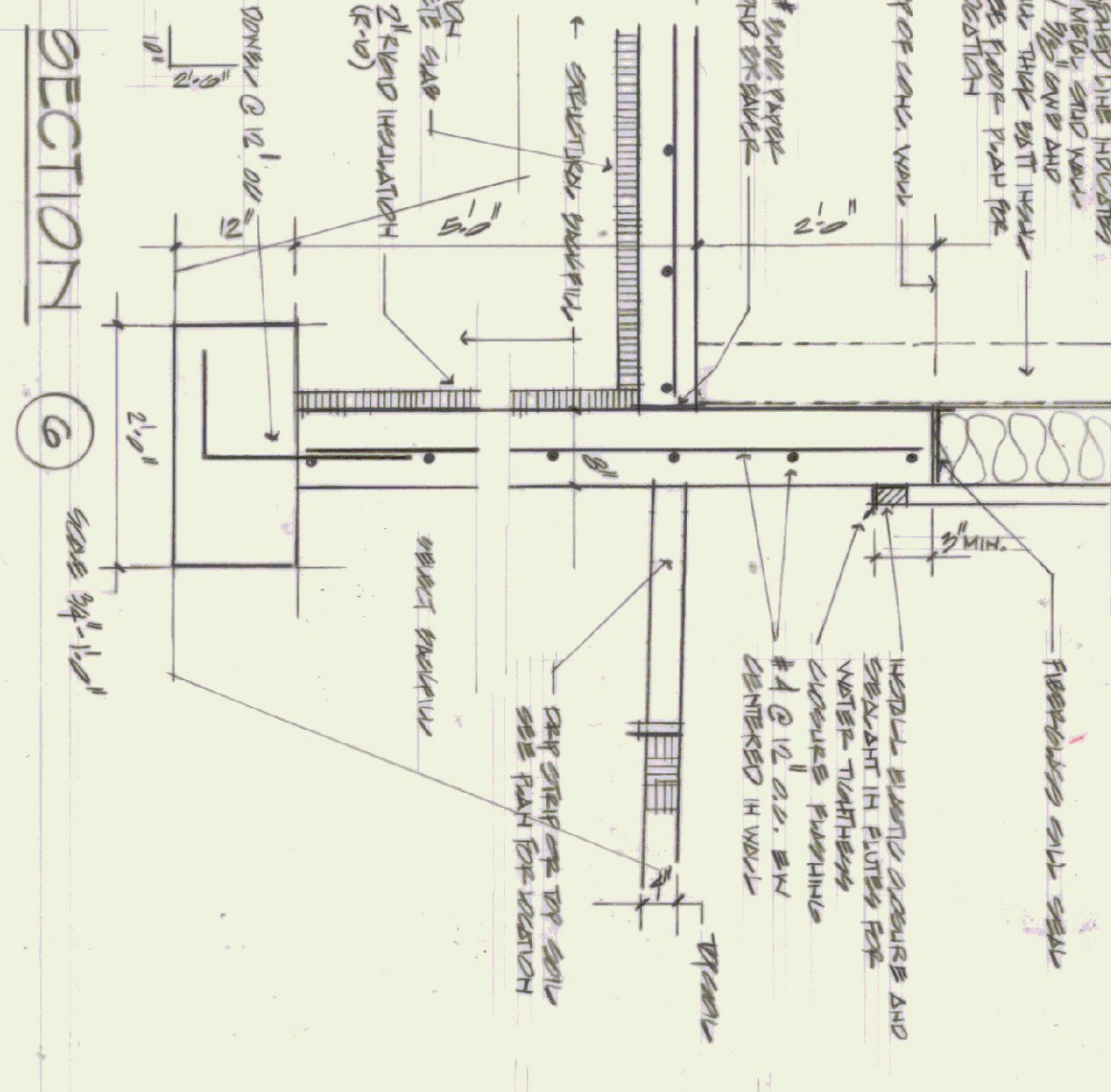
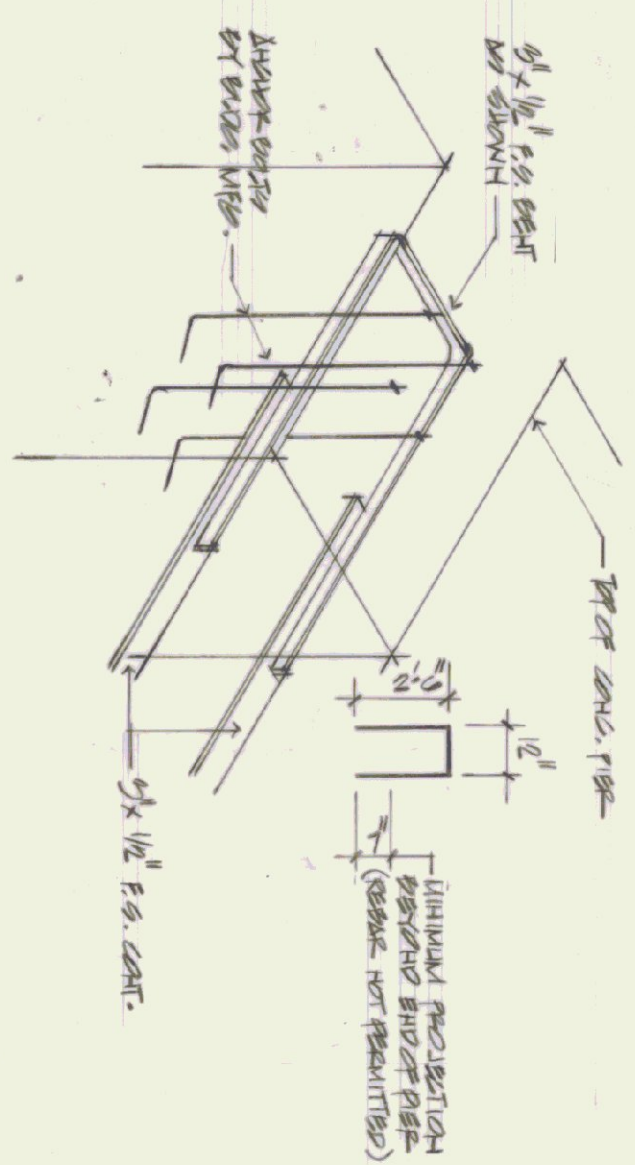
SECTION 1 scale 3/4" = 1'-0"



SECTION 2 scale 3/4" = 1'-0"



SECTION 3 scale 3/4" = 1'-0"

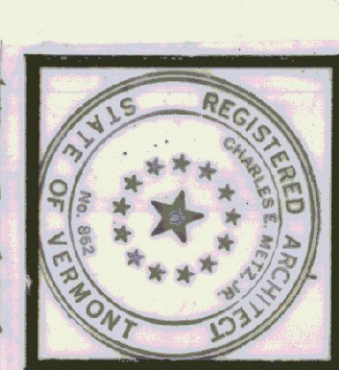


SECTION 6 scale 3/4" = 1'-0"

ISOMETRIC: HAIRPIN TIE scale 1/2" = 1'-0"

SECTION 4 scale 3/4" = 1'-0"

SECTION 4 scale 3/4" = 1'-0"



PROJECT:
 NEW AIRPORT HANGER
 MIDDLEBURY STATE AIRPORT
 TITLE: MIDDLEBURY VERMONT
 FOUNDATION PLAN
 DETAILS

CHARLES E. METZ
 ARCHITECT
 THE GRIST MILL
 BRADFORD VT 05033

DRAWING:
 A2