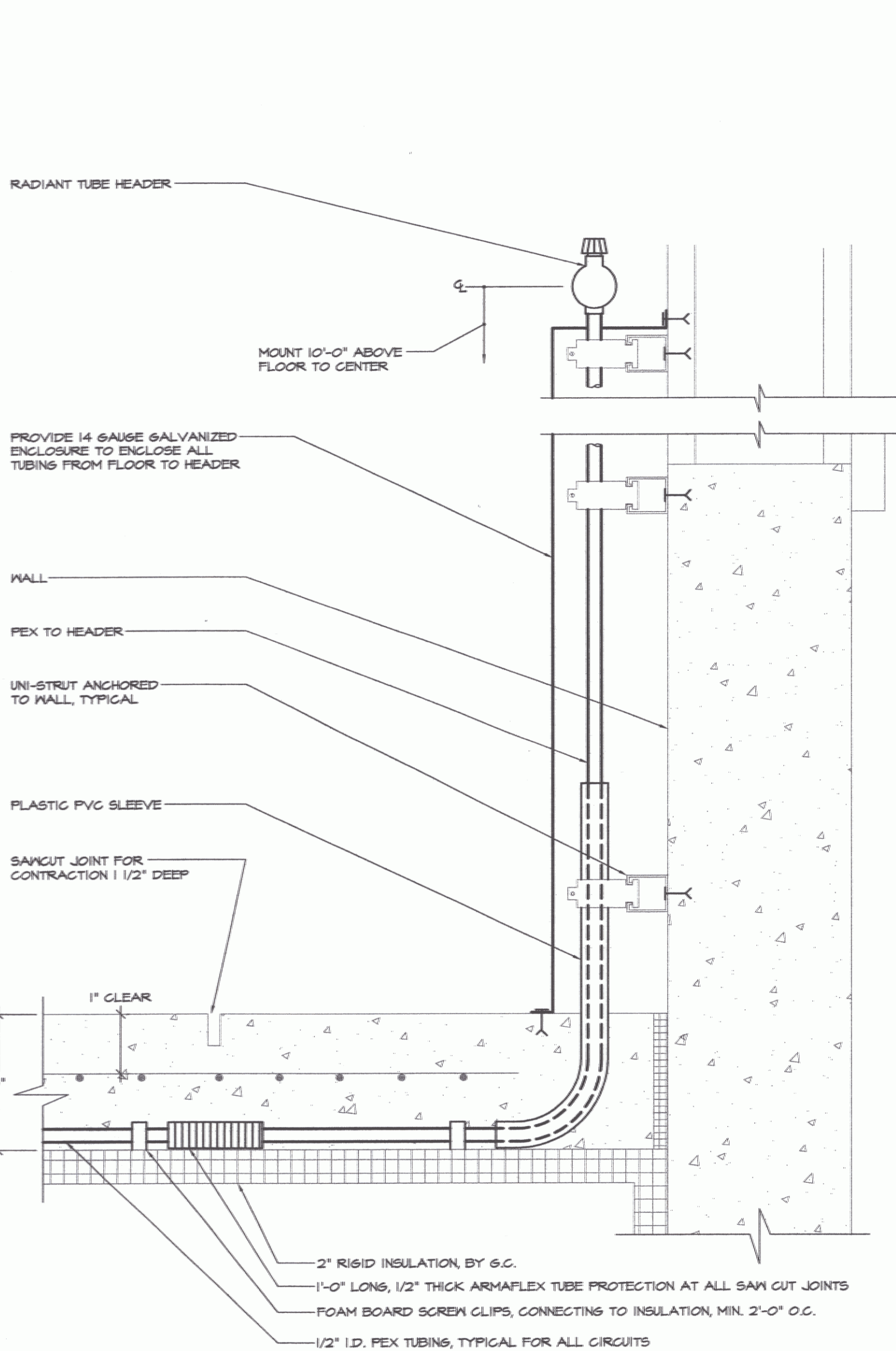
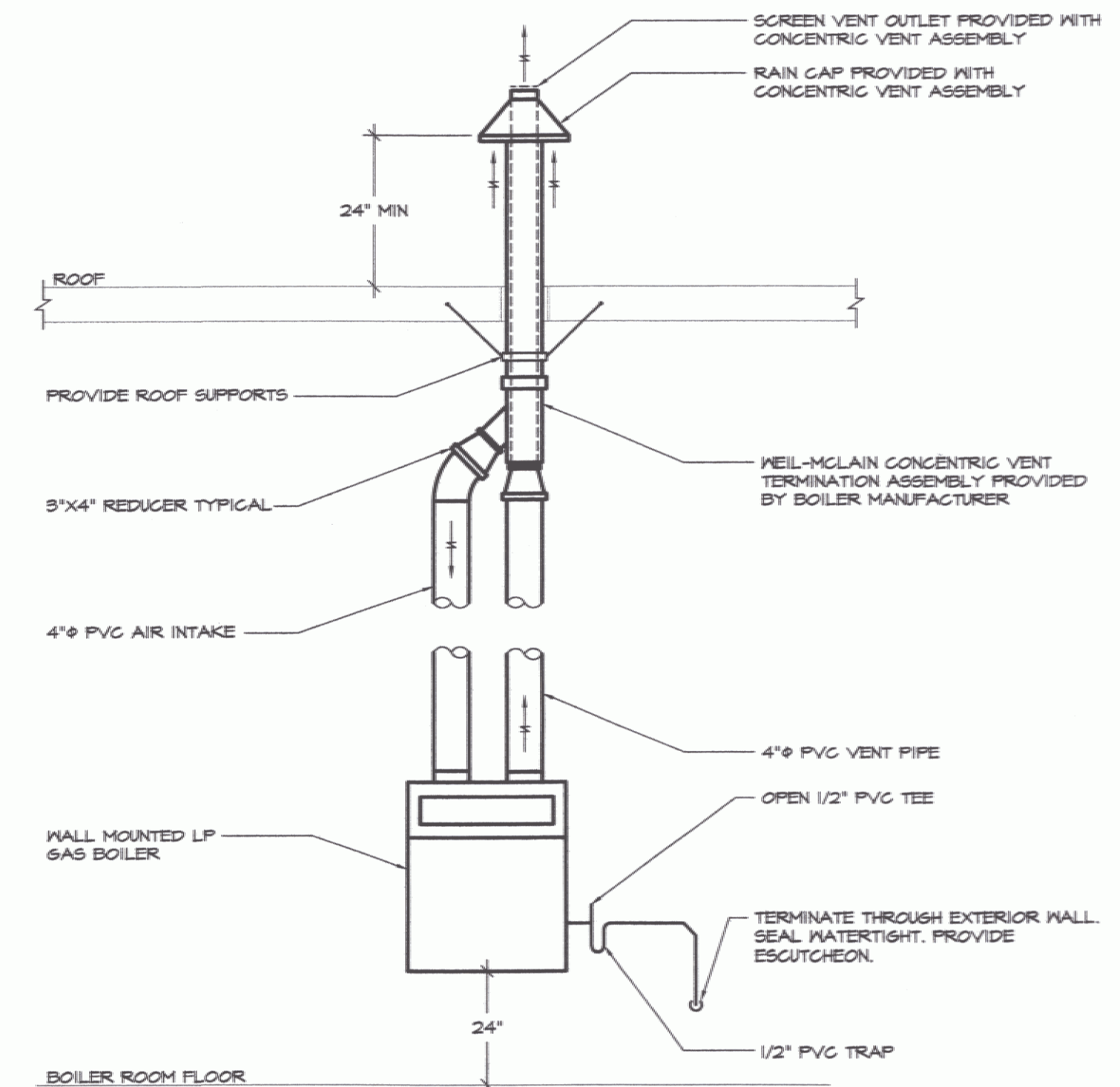


BOILER/SYSTEM PIPING SCHEMATIC
NOT TO SCALE

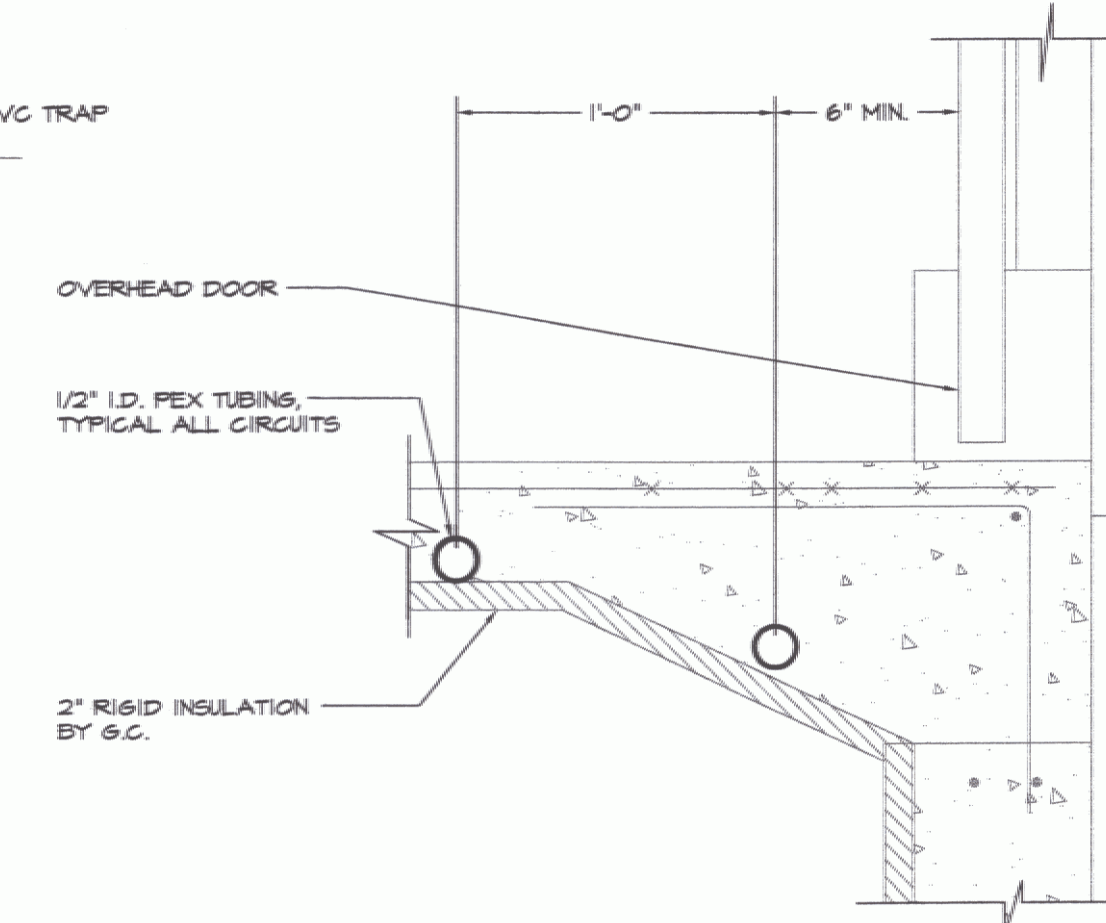


TYPICAL RADIANT TUBING DETAIL
NOT TO SCALE

1. PROVIDE SCHEDULE 40 PVC CONDUIT SLEEVE PROTECTION TO A MINIMUM OF 18" ABOVE FINISHED CONCRETE FLOOR SLAB, TYPICAL FOR RADIANT TUBING THROUGH SLABS.



BOILER GAS VENTING DETAIL
NOT TO SCALE



SECTION AT OVERHEAD DOOR
NOT TO SCALE

No.	MANUFACTURER	SERIES	MODEL	MIN. GPM	HEAD (FT. HD.)	MOTOR			REMARKS	
						HP	VOLT	PH		
P-1	TAGO	00	0014	5.0	12	1/8	115	1	3250	HEADER 1 PUMP
P-2	TAGO	00	0014	7.0	20	1/8	115	1	3250	HEADER 2 PUMP
P-3	TAGO	00	0014	7.0	20	1/8	115	1	3250	HEADER 3 PUMP
P-4	TAGO	00	0014	7.0	20	1/8	115	1	3250	HEADER 4 PUMP
P-5	TAGO	00	0014	7.0	20	1/8	115	1	3250	FUTURE PUMP
P-6	TAGO	-	121	33	12	1/4	115	1	1725	SYSTEM PUMP
P-7	TAGO	00	0011	25	5	1/8	115	1	3250	BOILER PUMP, NOTE 1

NOTE:
1) PUMP PROVIDED WITH BOILER AND SHIPPED LOOSE FOR FIELD INSTALLATION.

No.	MANUFACTURER	MODEL	CFM	E.S.P.	TYPE	RPM	MODEL			REMARKS
							H.P.	VOLT	PH	
EF-1	GREENHECK	SB-2H24-5	3900	0.30	SIDEWALL	1010	1/2	115	1	NOTE 1

NOTE:
1) PROVIDE WALL SLEEVE, LOW LEAKAGE BACKDRAFT DAMPER, EXPLOSION PROOF MOTOR, SPARK PROOF FAN BLADE, OSHA SIDE MOTOR GUARD AND WEATHERHOOD WITH BIRDSCREEN. WEATHERHOOD TO BE PROVIDED WITH A BAKED ENAMEL FINISH, COLOR SELECTED BY ARCHITECT.

No.	MANUFACTURER	SERIES	MODEL	SIZE	AIR PAT	DAMPER	FINISH	REMARKS

NOTES:
1) COORDINATE EXACT WIDTH TO MATCH WINDOW ABOVE.
2) PROVIDE GALVANIZED BIRDSCREEN.
3) COLOR OF LOUVER TO BE SELECTED BY ARCHITECT.

STATE OF VERMONT DANIEL W. DUPRAS No. 1335 MECHANICAL LICENSED PROFESSIONAL ENGINEER		
I	CONSTRUCTION	11/17/05
NO.	ISSUED FOR	DATE

LANE ASSOCIATES
CONSULTING ENGINEERS, P.C.

HEATING, VENTILATION, & AIR CONDITIONING,
PLUMBING, FIRE PROTECTION, & ELECTRICAL

CHARLES F. LANE, P.E.
DANIEL W. DUPRAS, P.E.

51 KILLINGTON AVENUE,
RUTLAND, VERMONT 05701
TELEPHONE: (802)747-3346
FAX/MODEM: (802)747-3356

MECHANICAL DETAILS & SCHEDULES				M 2
NEW EQUIPMENT BUILDING CLARENDON AOT CLARENDON, VT				
APPR.	DND	DRAWN:	DND/GJT	SCALE: AS NOTED
PROJ. NO. 0312-24				

014

X:\031224\Drawings\Mech\031224M06.dwg, M2, 11/17/2005 8:30:30 AM, © LANE ASSOCIATES CONSULTING ENGINEERS PC, 2005